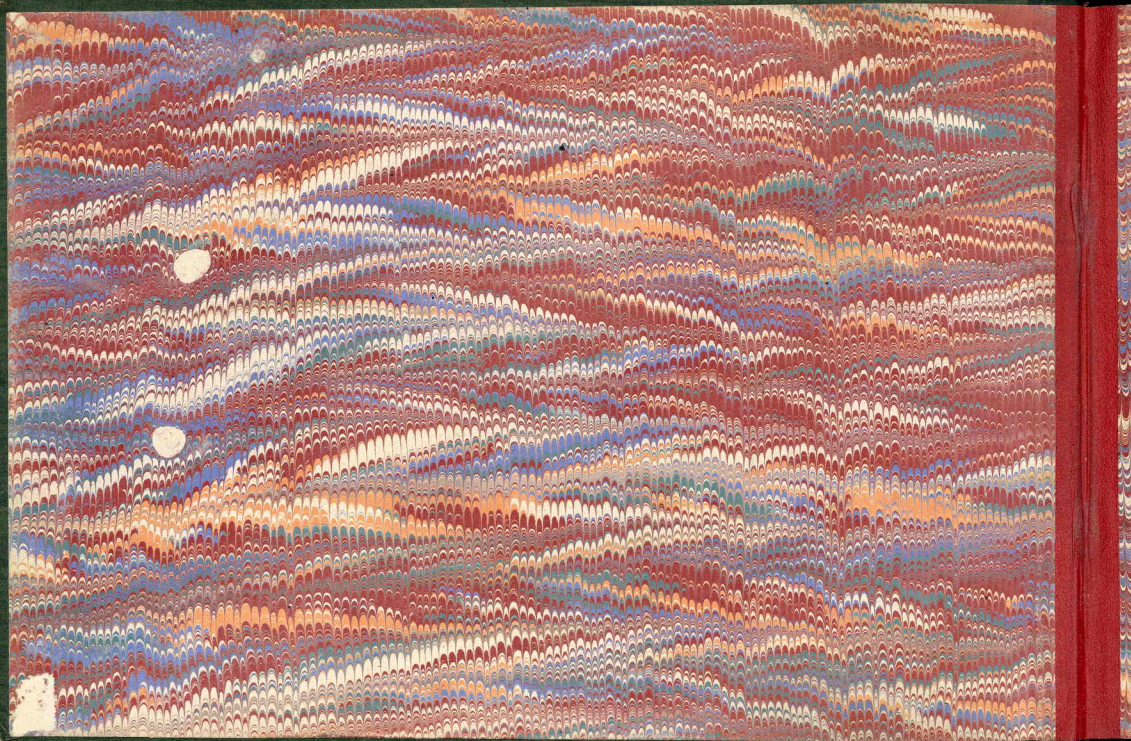


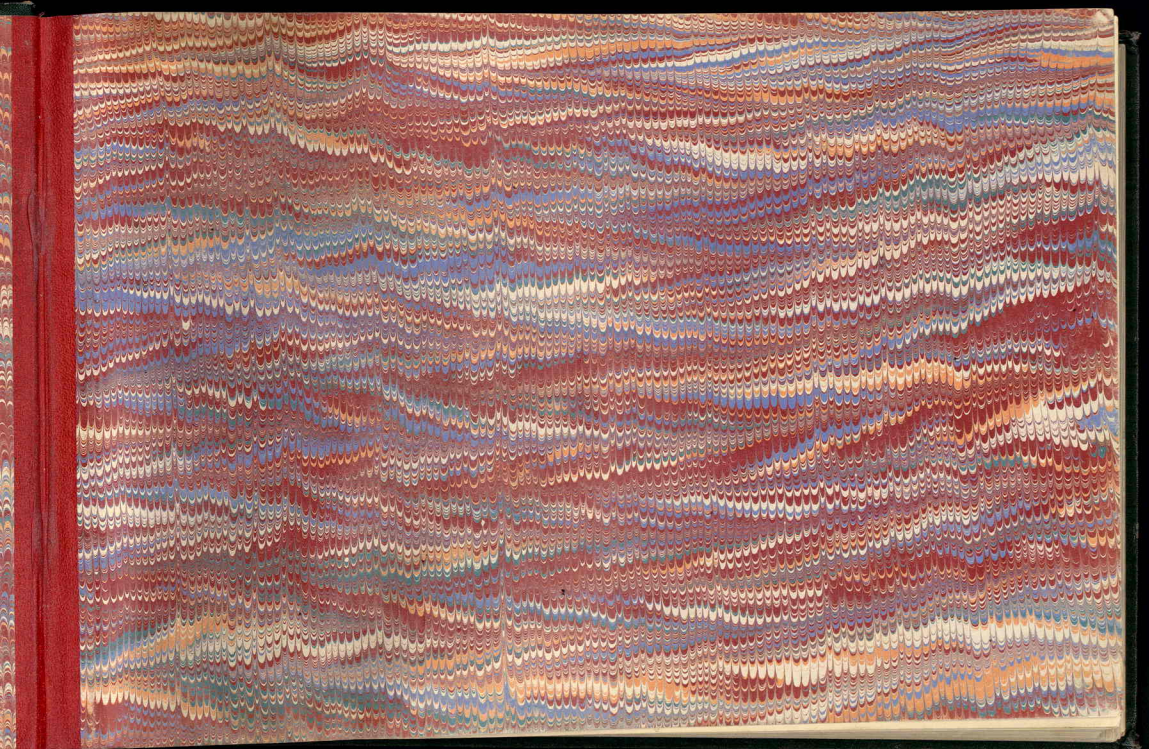


RUINES DU MEXIQUE

ET

TYPES MEXICAINS

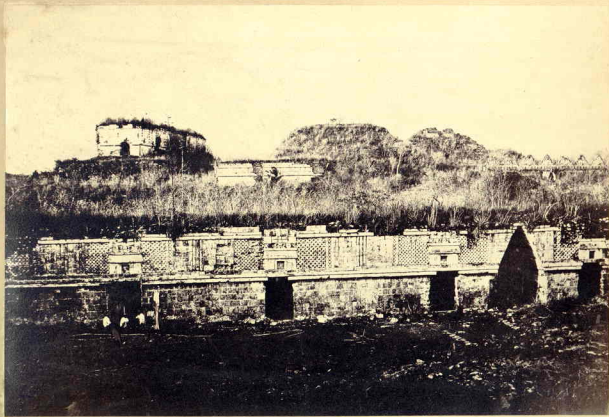




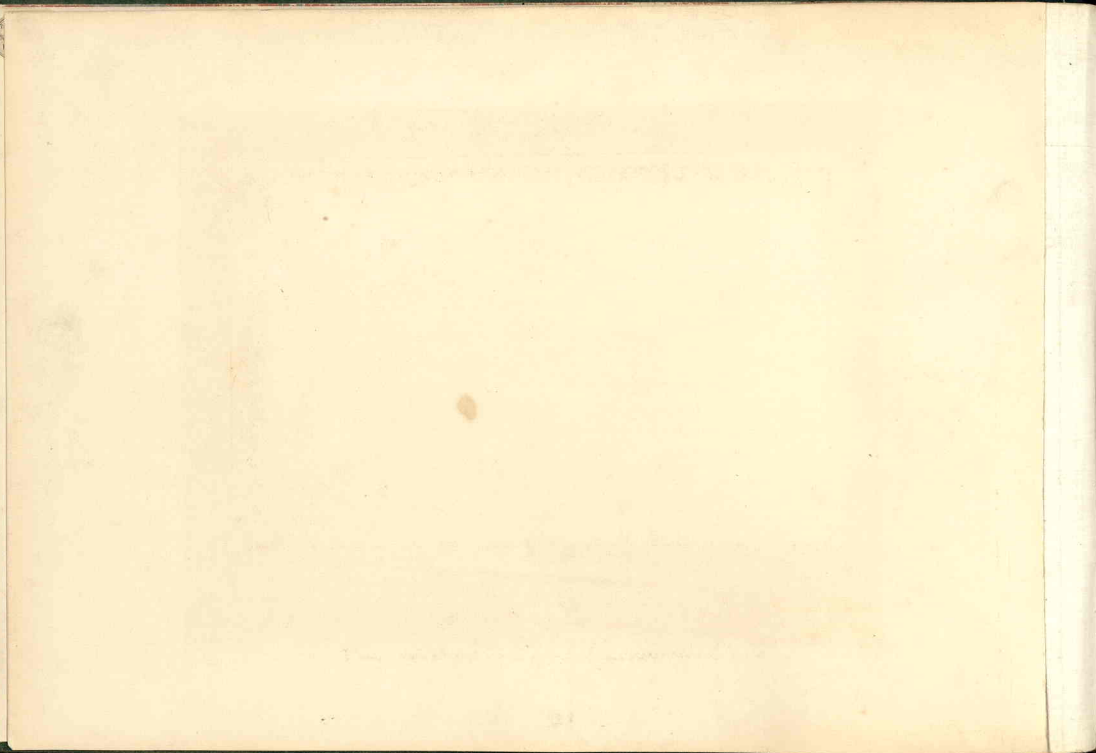
PROCEDES FEDORAKO
L'ÉCLAIRAGE DE L'ÉCRAN
SÉRIE DE L'ÉCLAIRAGE
PARIS

97. 10. 0.1

20115
30,000
HWA
1

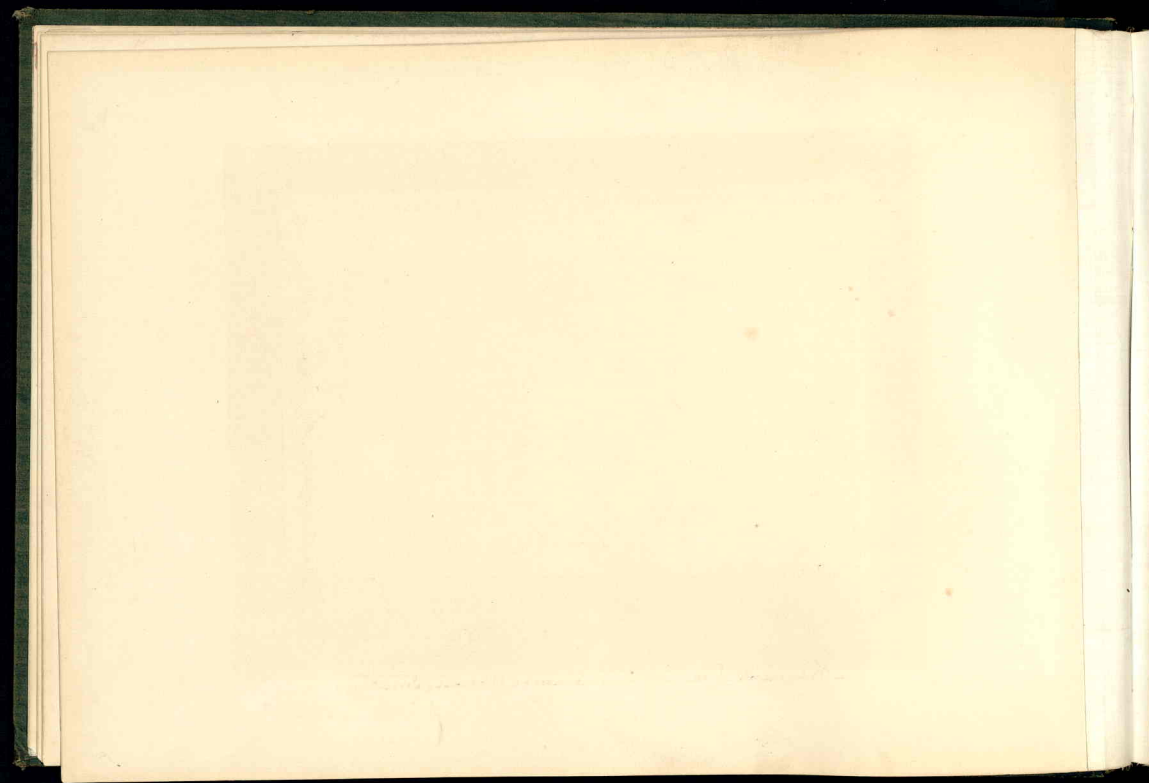


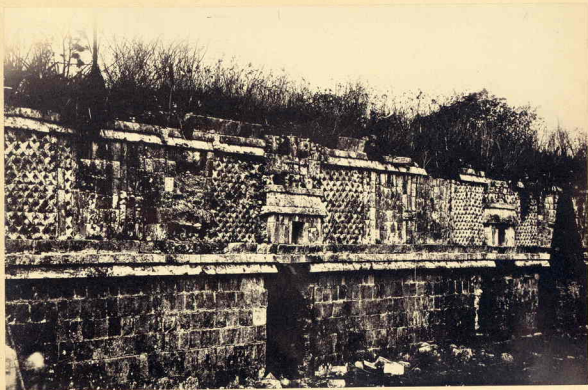
Une générale San Jeronimo d'Uxmal (Province de Yucatan - Mexique).





= Palais des Nobles à Uxmal (Yucatan). Sur la hauteur la maison des Coum (Beccotán).



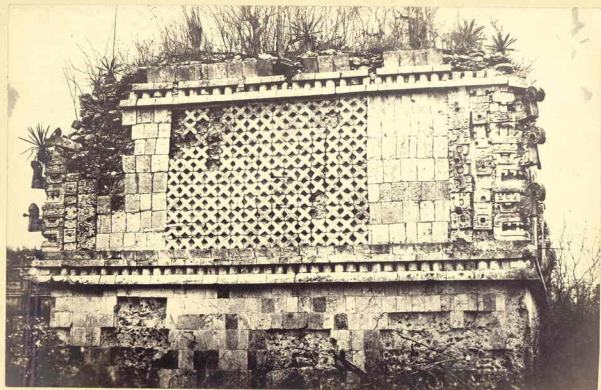


= Fragments d'une partie des Ruines d'Uxmal (Yucatan).

11

[Faint, illegible handwriting]

[Faint, illegible handwriting]



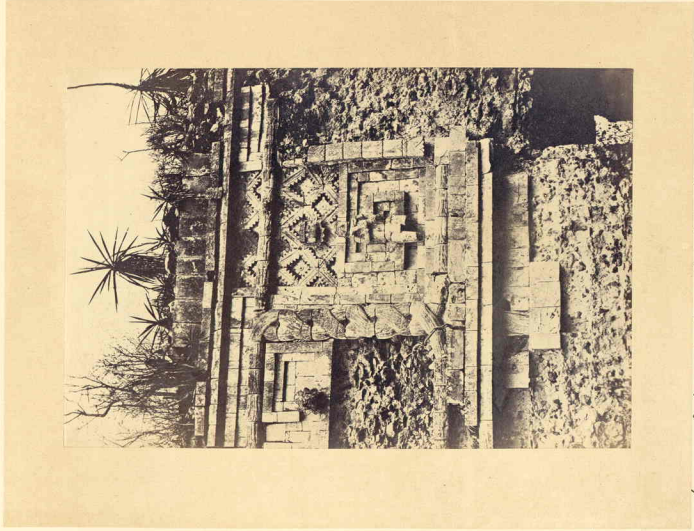
= Côté du Balair des Nonnes à Uxmal (Yucatan) .





= Facade de l'aile nord du Palais des Honnora Usmal .



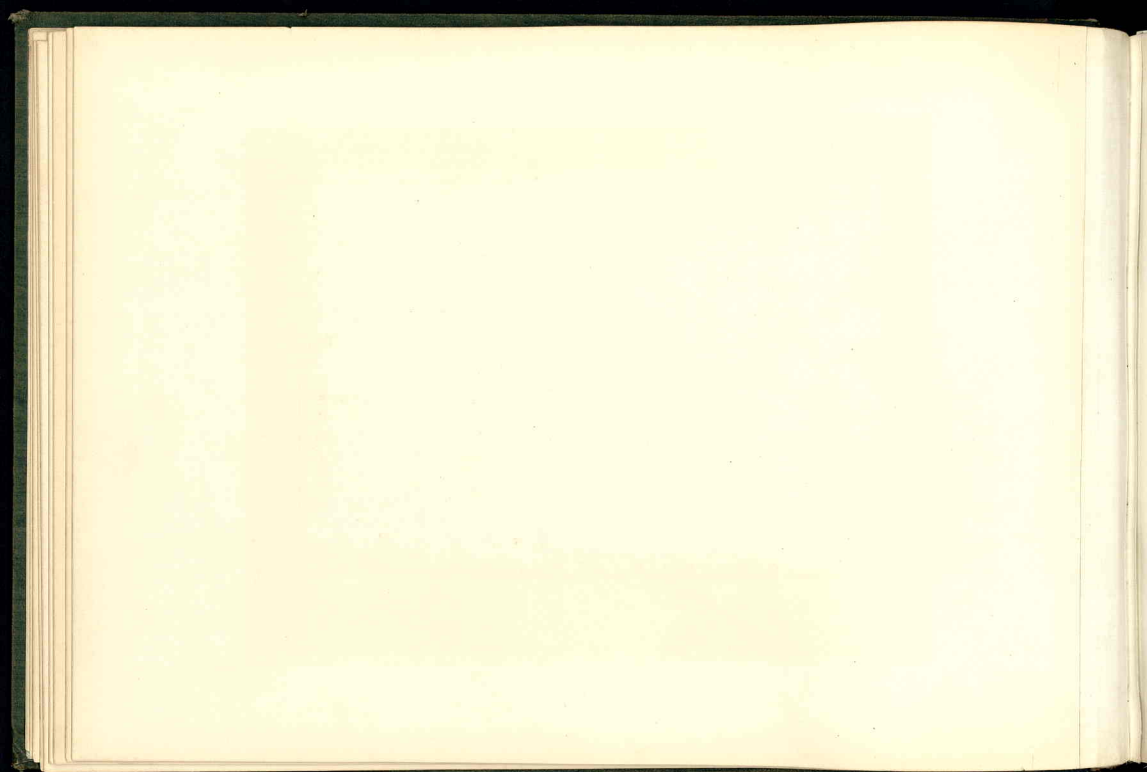


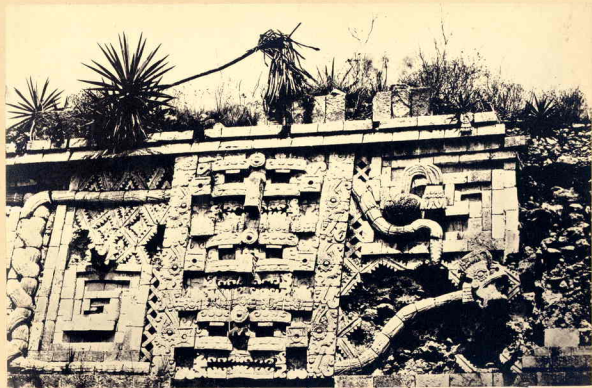
= Fragment des bas-reliefs de la façade du Sépulchre des monnaies à Uxmal.





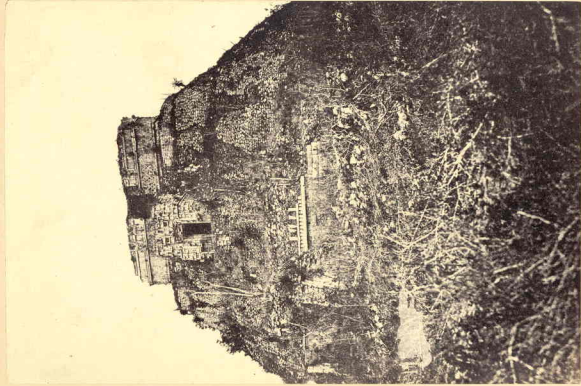
= Palais des Nonnes à Usmal, facade des Serpents (on verra les détails à la planche précédente) -
(et à la planche suivante!)





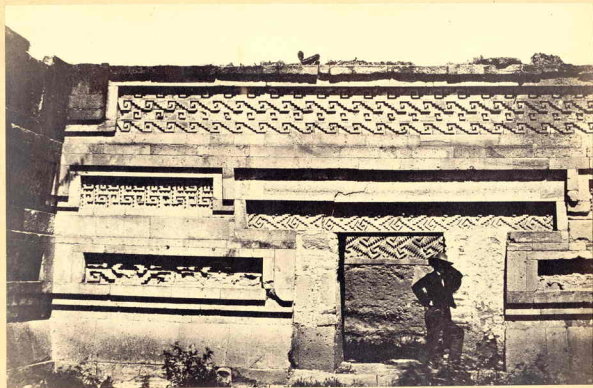
= Détail de la façade dite des Serpents du Palais des Nobles à Uxmal (Yucatan).

175



79
= Palais des Saints à Nemal — (Surostang) .

[Faint, illegible handwriting, possibly bleed-through from the reverse side of the page]



Oaxaca. = Intérieur d'une Cour du Palais de Mitla (en espagnol) Mitlan (Pénjar).





= Maison en Cui à Witle (Intérieur de la Cour.) Baja Cal.

1850

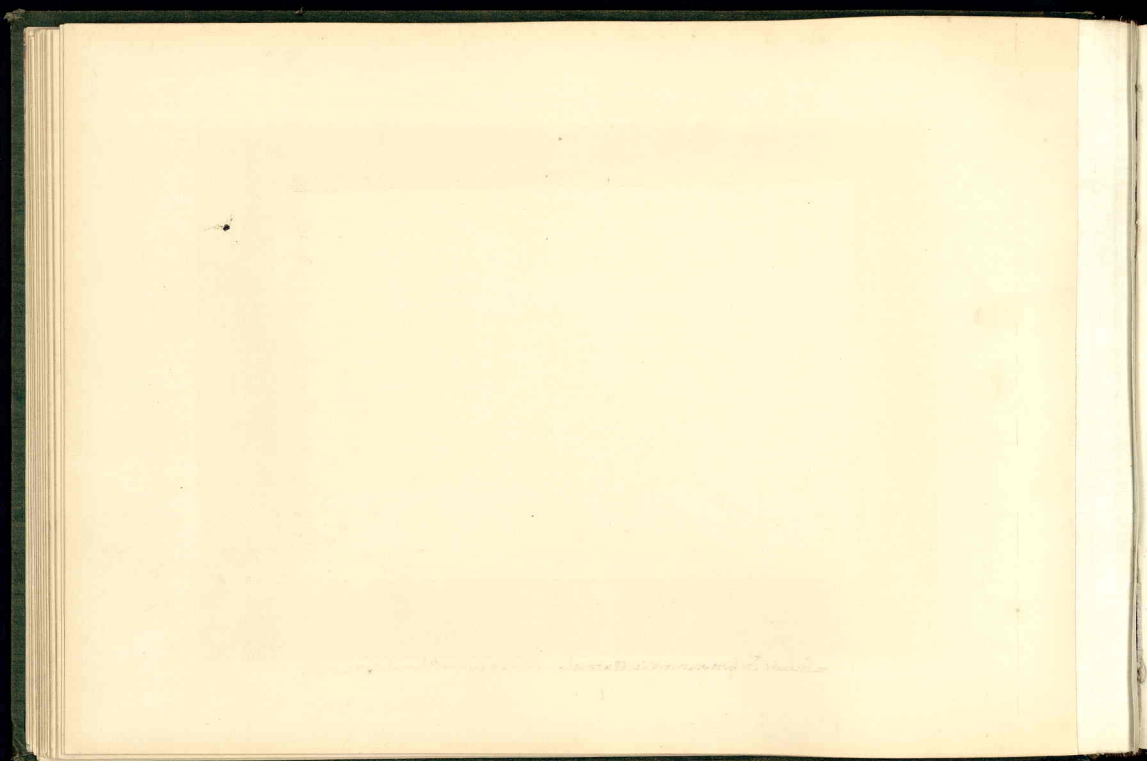


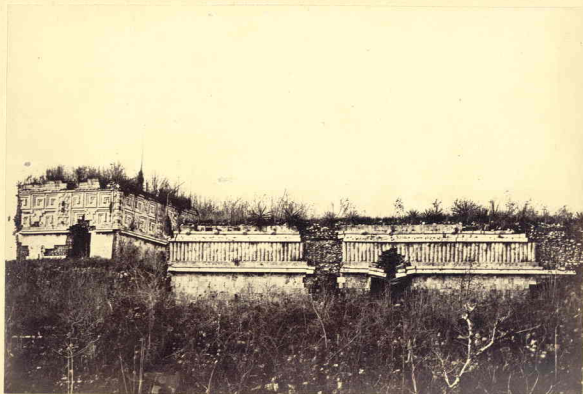
= Place En Marché à Izamal - Yucatán.

Faint, illegible handwriting at the bottom of the page.



= La grande Pyramide Knech-Kachmi à Dymal. Indes.



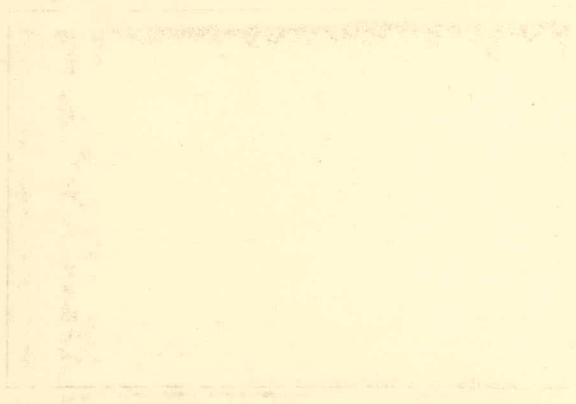


= Palais du Gouverneur à Mamal (situé un peu au nord de Mamal). Guatemala.





= Détail du Palais du Gouvernement à Namal.



[Faint, illegible handwriting at the bottom of the page]



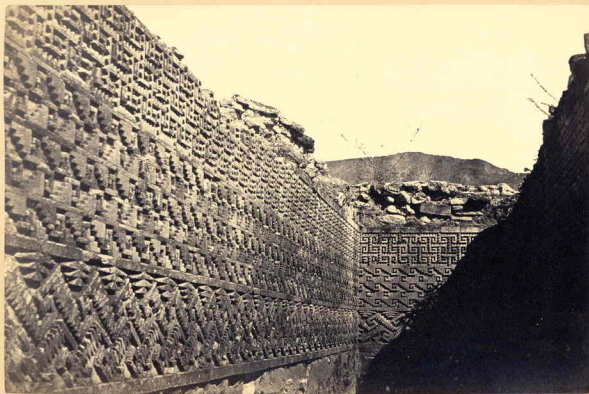
= Vue générale des ruines de mitla ("Oaxaca").

Faint, illegible handwriting at the bottom of the page.

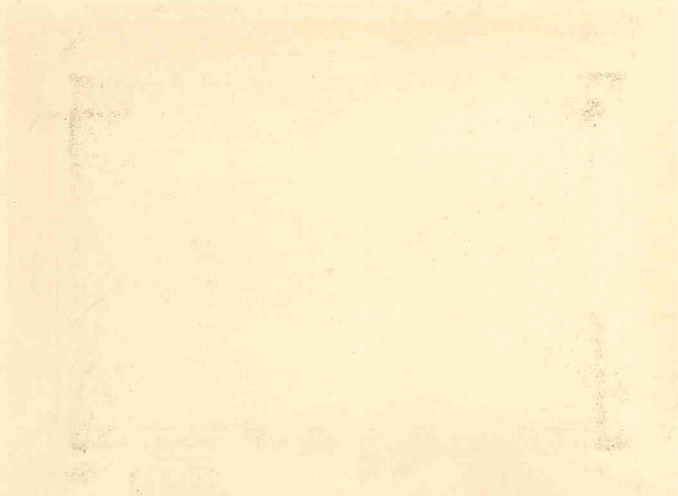


= Grand Palais de Mitla, façade orientale. (Province de Oajaca).

Faint, illegible handwriting at the bottom of the page.



= Intérieur d'une salle du Grand Palais de Mitla (Oaxaca).



Faint, illegible text at the bottom of the page, possibly a signature or a date.



— = Deuxième Palais de Mitla ~ Oaxaca.



Faint, illegible text at the bottom of the page, possibly a signature or a date.



= Extérieur de la maison en Curie à Mitta. Ajaccio,



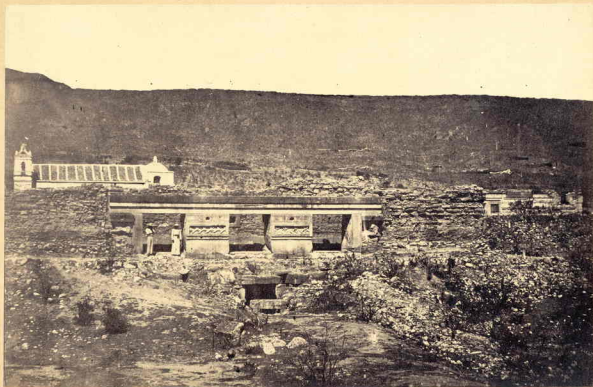
Faint handwritten text at the bottom of the page, possibly a signature or date.



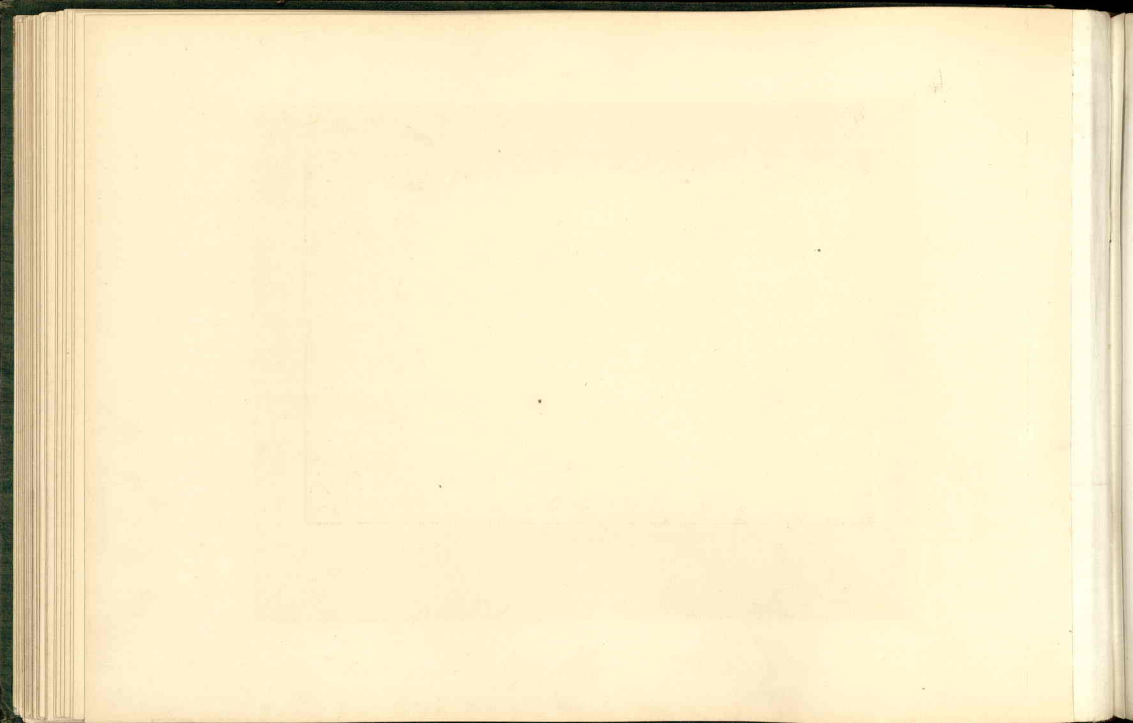
= Pyramide artificielle de Mitla, surmontée d'une Eglise. Mexique.

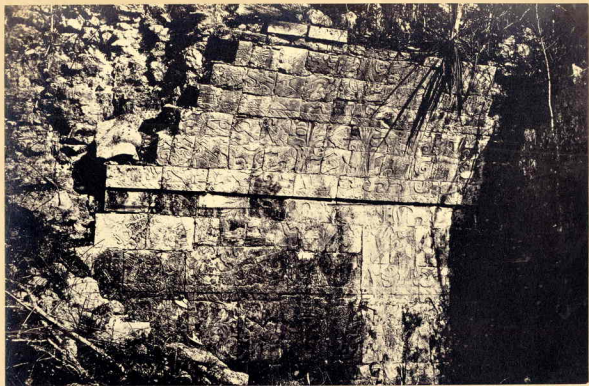


Faint, illegible text at the bottom of the page, possibly a signature or a note.



= Facade du 3^e Palais de Mitla, Province de Oajaca.





Interior of the Temple of the Sun

at the base of the Pyramid of the Sun at Cholula, Puebla



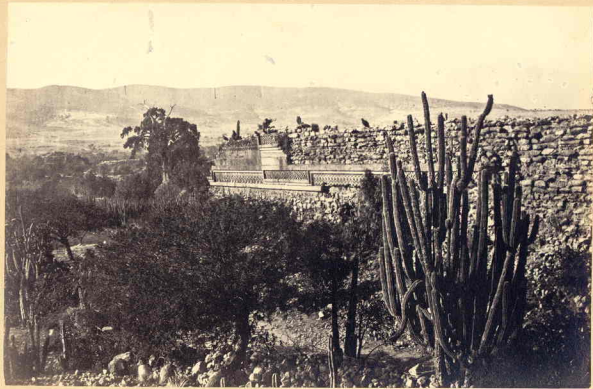
[Faint, illegible text, possibly bleed-through from the reverse side]



= Le grand Balcon de Mitla (Province de Oajaca) .



Faint, illegible text or a signature at the bottom center of the page.



= Facade du H.º Palais de Mitla (Province de Oaxaca).



Faint, illegible text at the bottom of the page, possibly bleed-through from the reverse side.



= Grand Palais de Mitta (Intérieur d'une salle) saïaci.

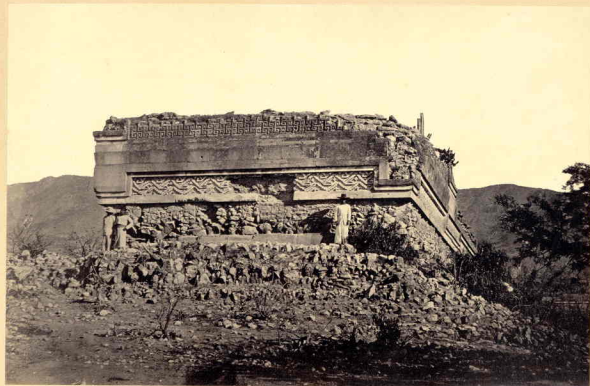
Faint, illegible handwriting at the bottom of the page.



= Quatrième Palais de Mitla (Oajaca).



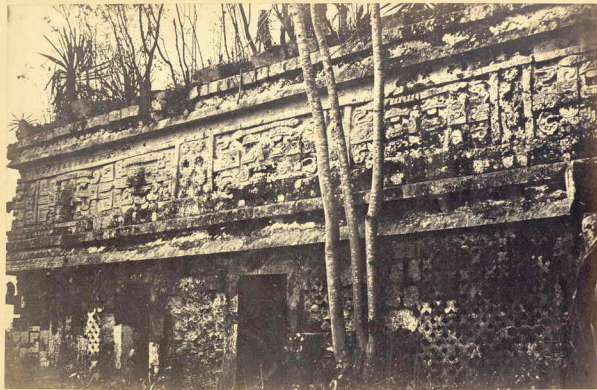
[Faint, illegible text, possibly bleed-through from the reverse side]



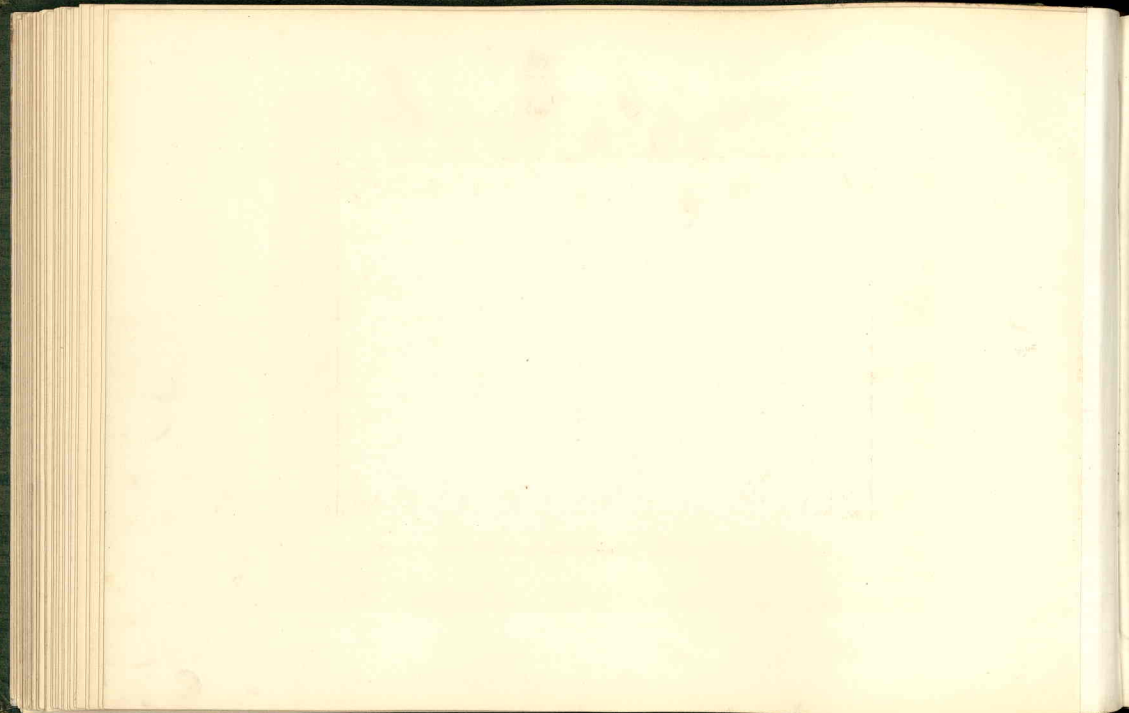
= Côté sud du quatrième Palais de Mitla (Oajaca).

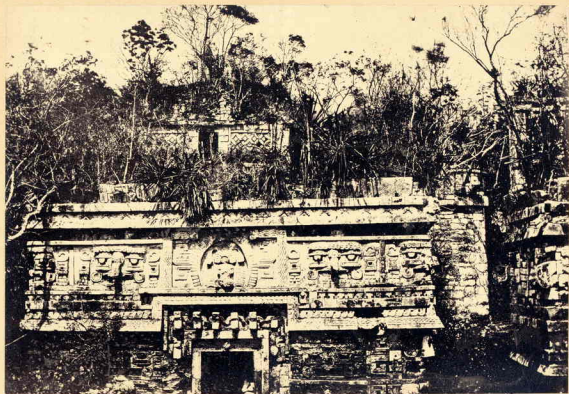


[Faint, illegible text, possibly bleed-through from the reverse side]



= Palais des Mones à Chichén-Itzá. Yucatan.





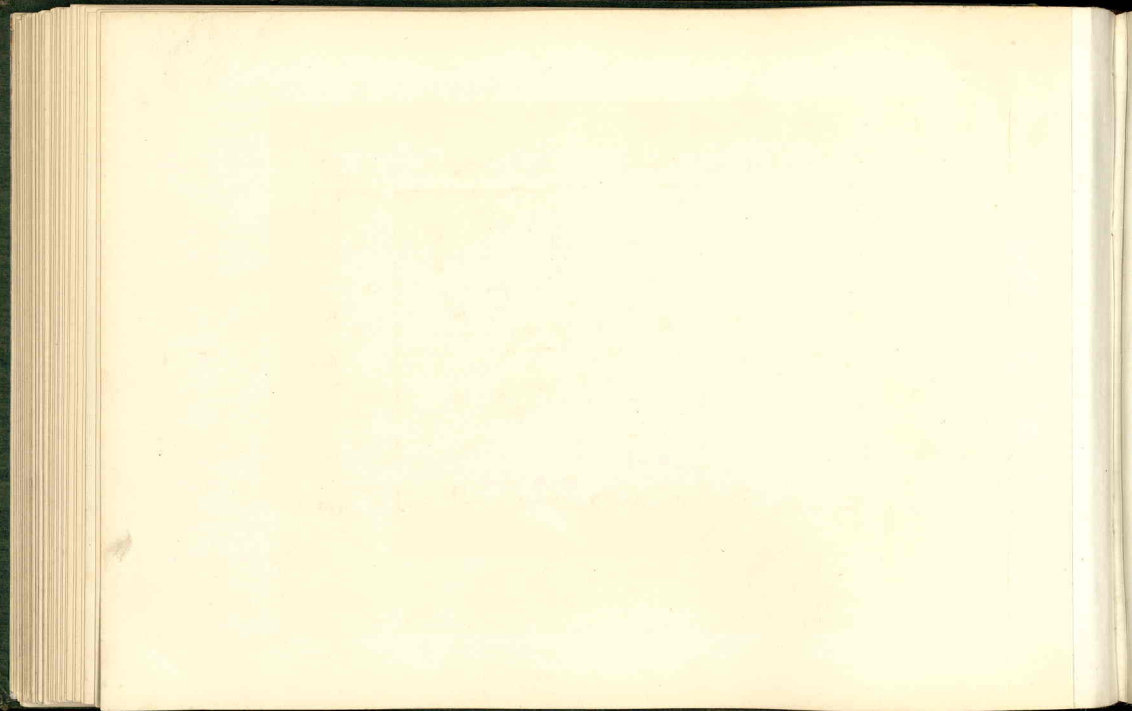
= Facade principale du Balcon des Moines, à Chichén-Itzá. Yucatán.

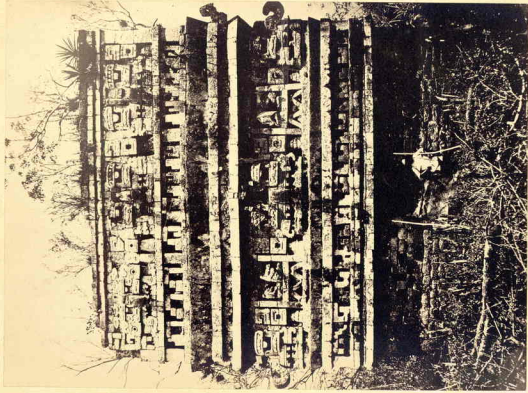
Handwritten text at the bottom of the page, possibly a signature or date, which is very faint and difficult to decipher.



N'est-ce pas le
palais de Bonampak
à Uxmal ?

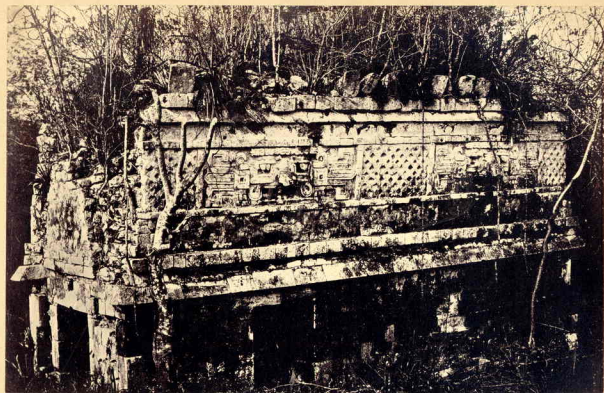
= Palais des Nonnes à Chichén-Itzá. Yucatán.



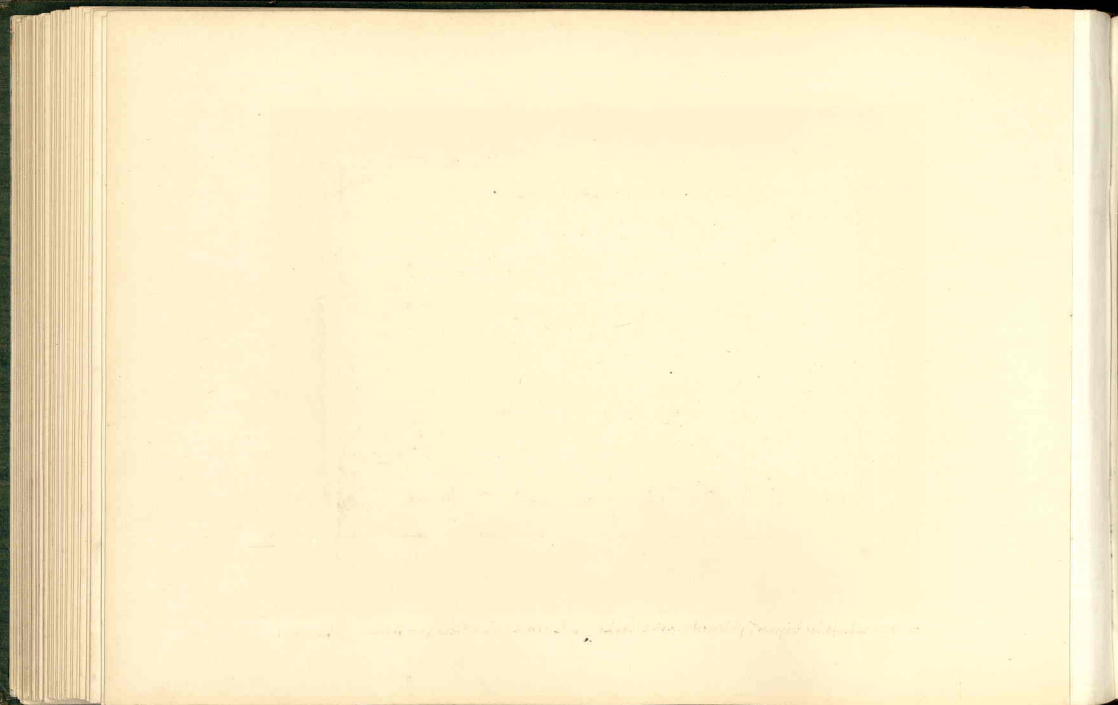


2
Cliché gendre du Palais de colonnes à Chichén Itzá Yucatan

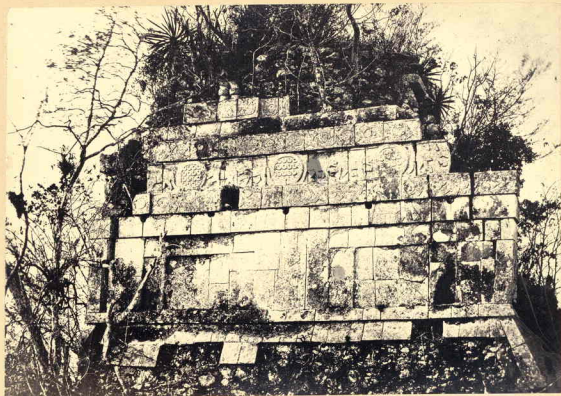
Faint, illegible handwriting at the bottom of the page.



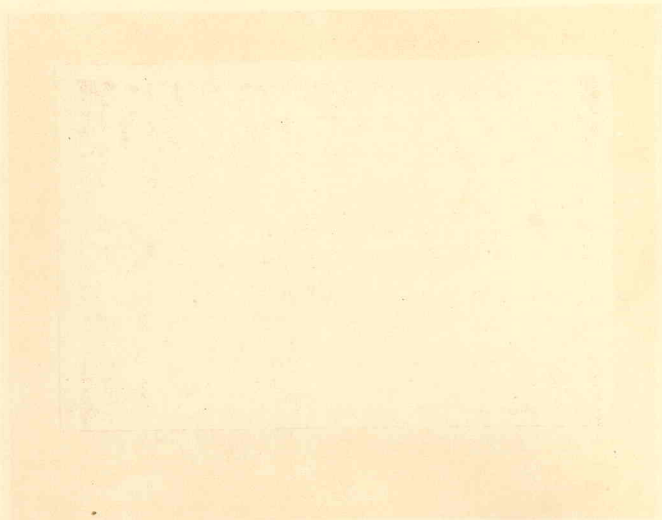
= Palais des Moines à Chichen-Itza (côté droite). Mexique.



[Faint, illegible text at the bottom of the page, possibly bleed-through from the reverse side.]



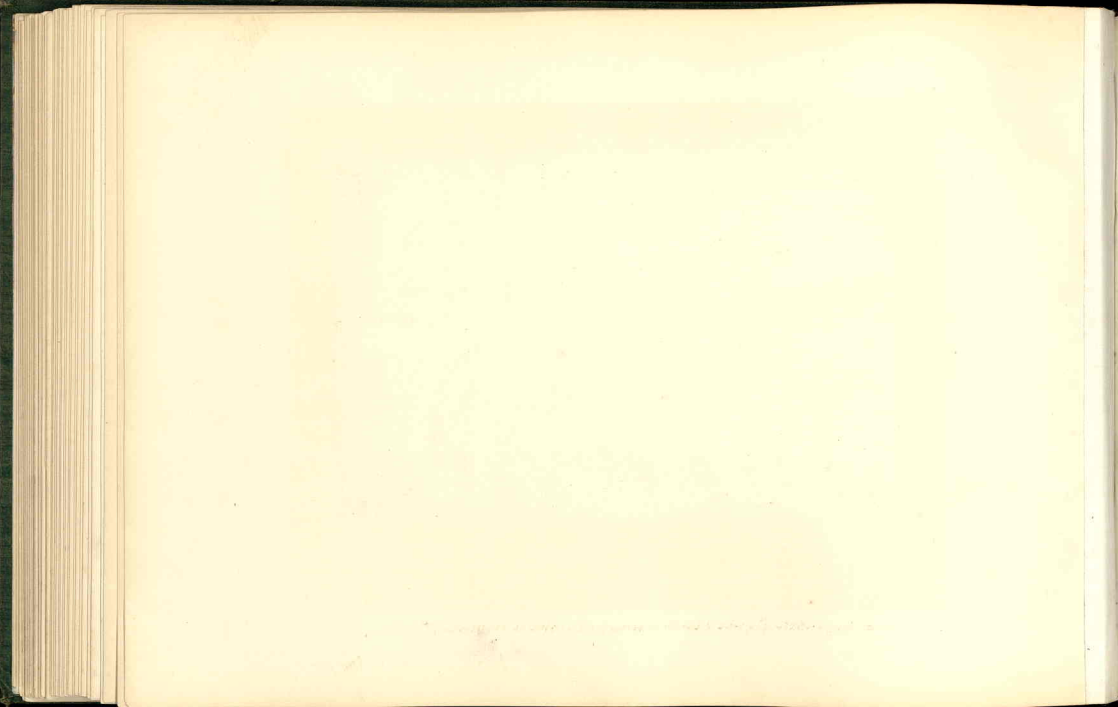
= Deux reliefs des bûches, faisant partie du jeu de la Couronne (à Chichen-Itza) Méxique.



Faint, illegible handwriting at the bottom of the page.

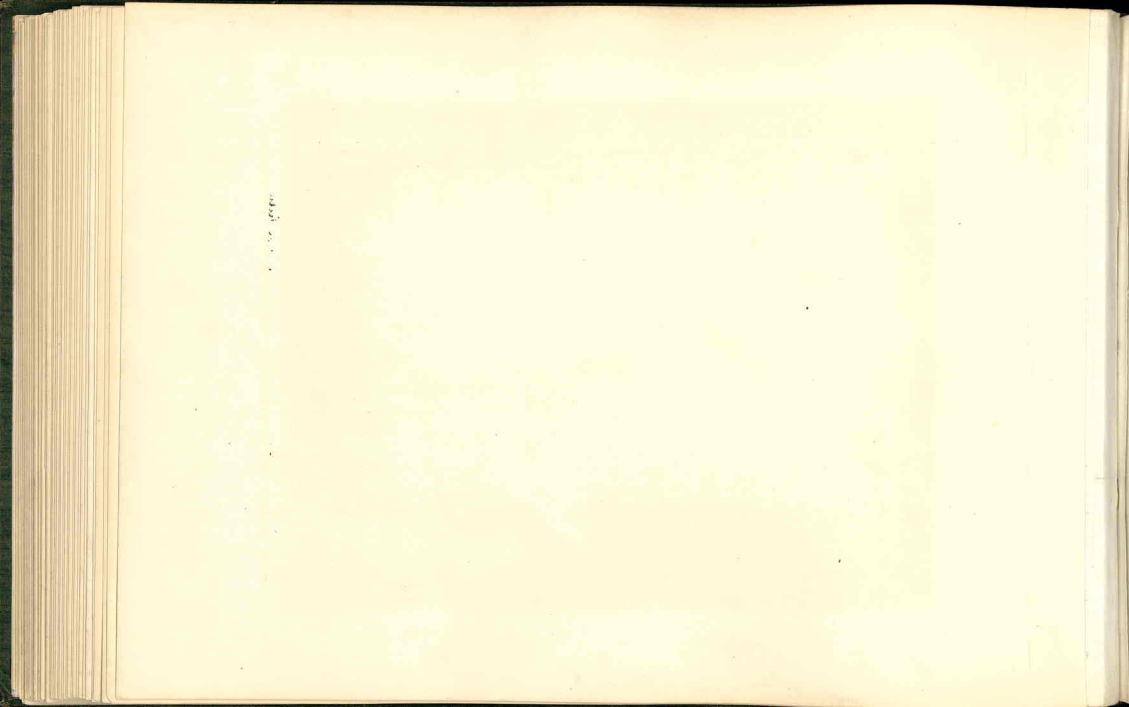


= Le Chichaj-Chob ou la Prison à Chichen-Itza . Yucatan .



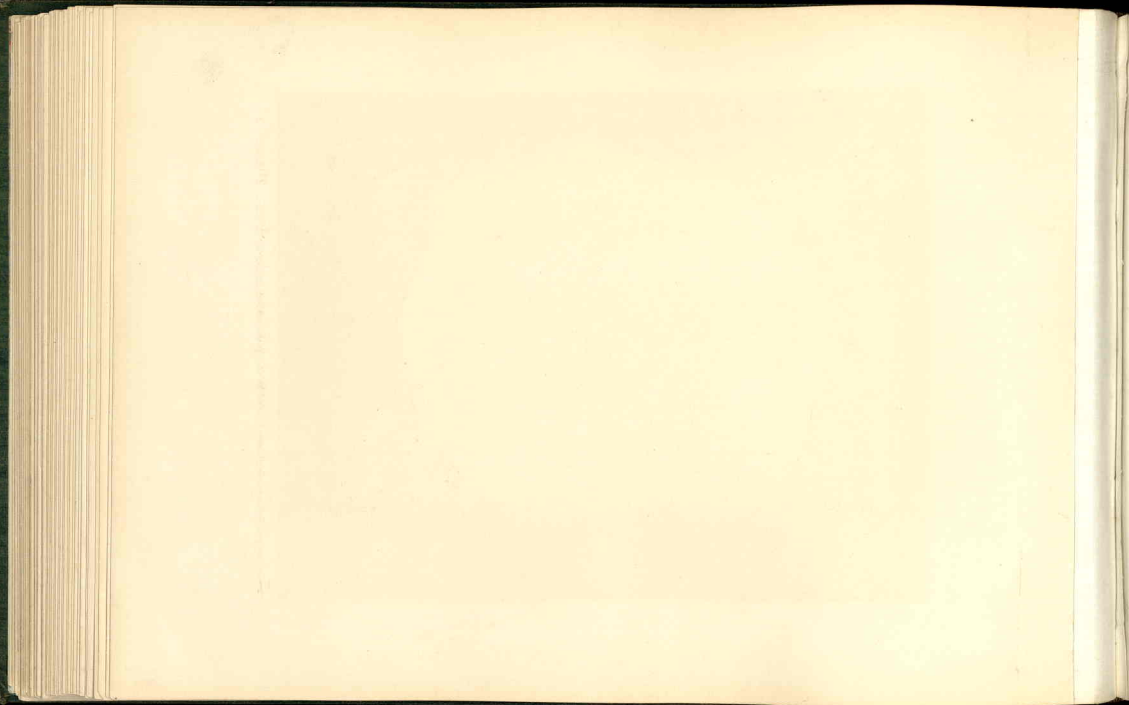


= Giganteste figure ; base d'une pyramide à Uxmal. Yucatan.





= La Pierre de la Croix; provenant d'un temple de Oulanguer.



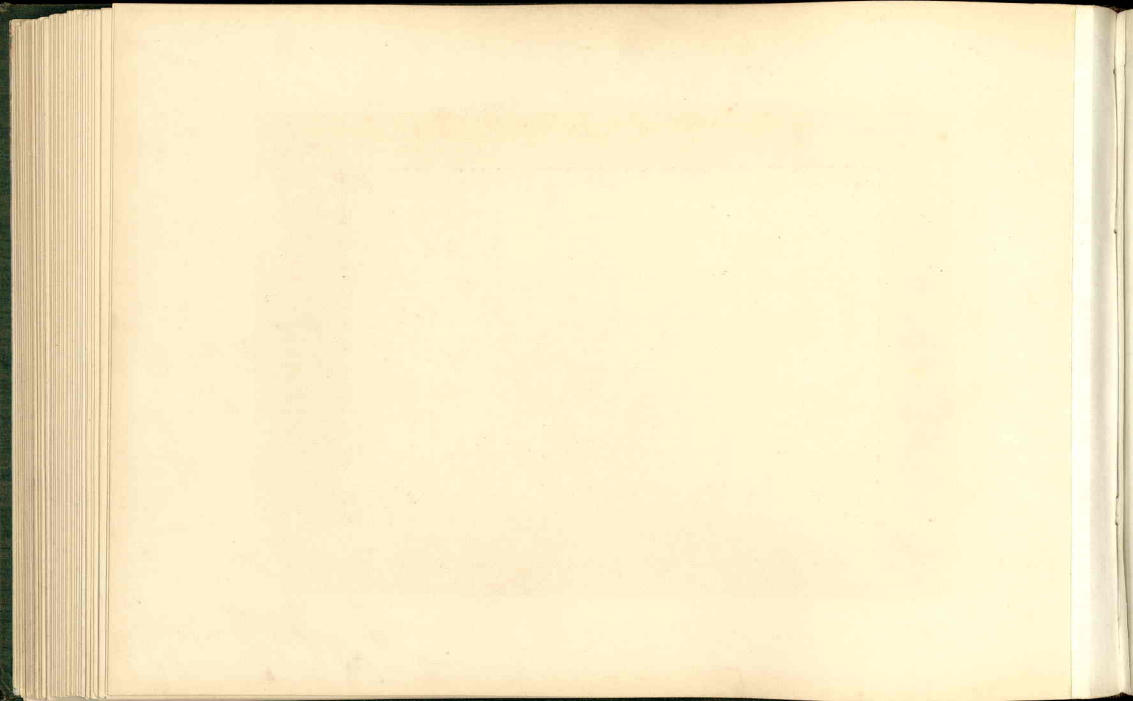


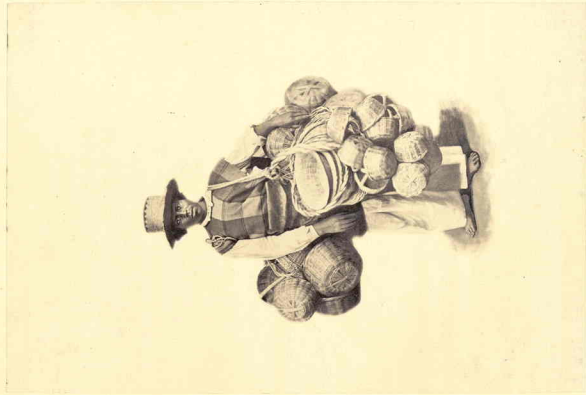
=Zodiaque aztèque, trouvé sur terre, près de la cathédrale de Mexico.





= Gigantéisme arbre appelé "Subano" à Santa Maria del Buile (Péninsule de Ceylan). Ces *Alphandul* mesurent 13 mètres de diamètre, jusqu'à la hauteur de 7 mètres. C'est un arbre de la famille des *cupress*, de la famille des conifères.



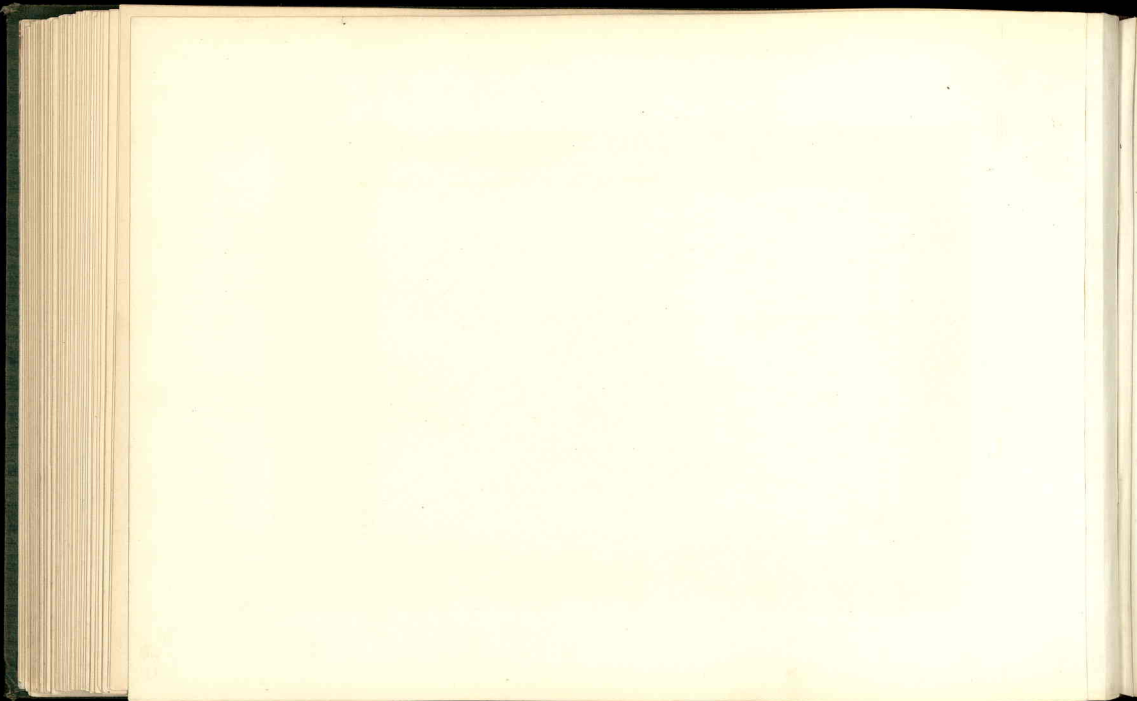


J. B. ROBERT DELIN. MEXICO.

FRANCIS & JOHN MCKIM.

TIPOS MEXICANOS

N.º 2





MEXICANO ESTER. N.º 3.

PROYECTO. ESTER. N.º 3.

TIPOS MEXICANOS
N.º 3

181

182

183

184

185

186

187

188

189

190

191

192

193

194

195

196

197

198

199

200

201

202

203

204

205

206

207

208

209

210

211

212

213

214

215

216

217

218

219

220



JUN. MICHOU. Paris. Meuse.

FOUGÈRE. PARIS. METZ.

TIPOS MEXICANOS
N.º 4





REVUE DE LA MEXIQUE

PROFANE, JEAN MICHAEL

TIPOS MEXICANOS
N°5





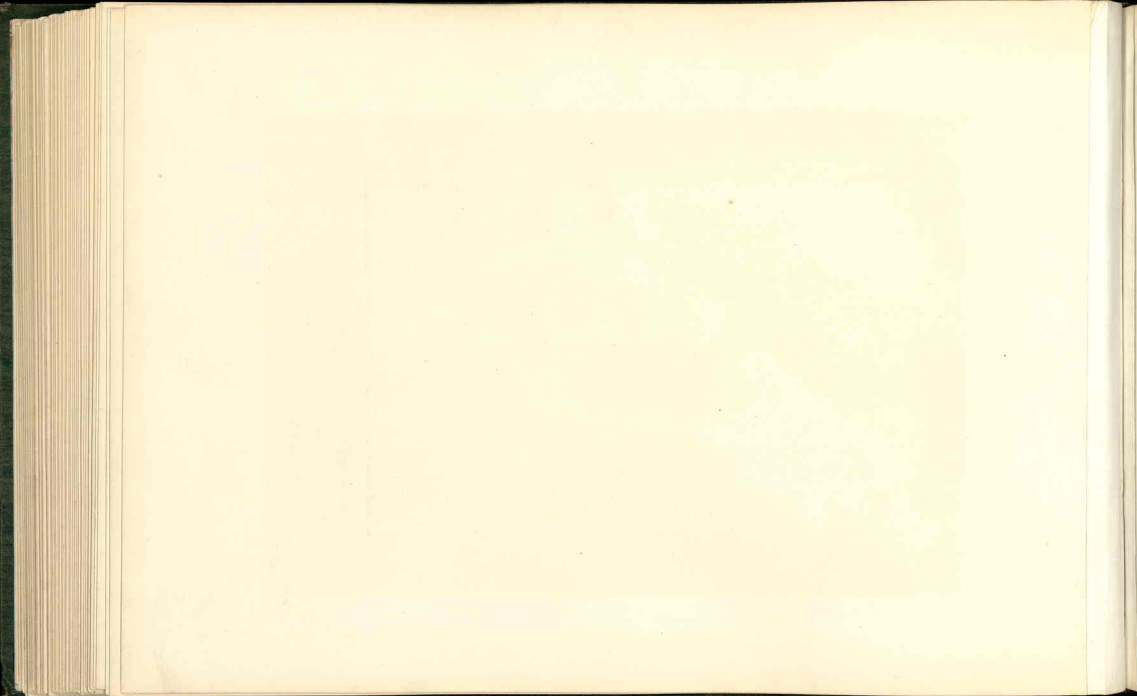
Mrs. MICHAEL LINE, Mexco.

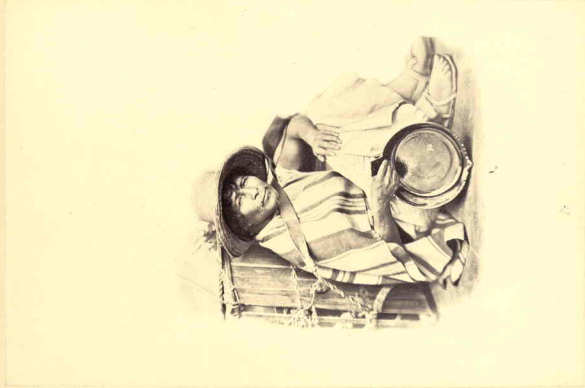
Photog. J. DE LA MORA.

TIPOS MEXICANOS

N.º 6

(6)

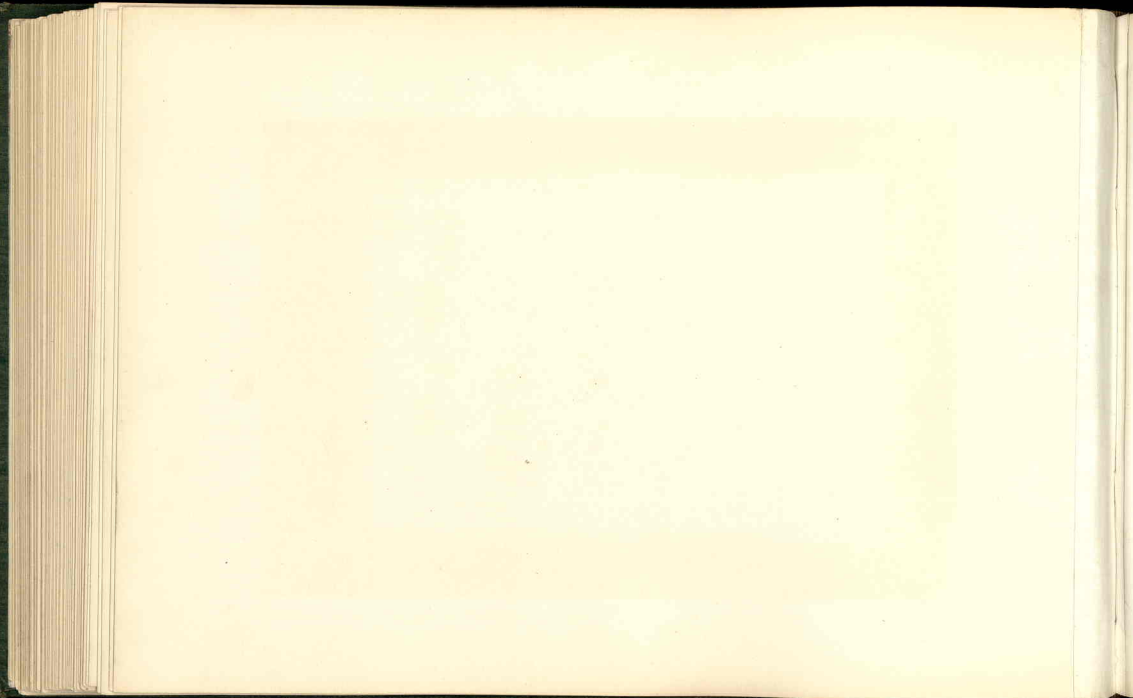




MUSEO HISTÓRICO DE MEXICO

FOTOGRAFIA DE J. M. MORALES

TIPOS MEXICANOS
N.º 7

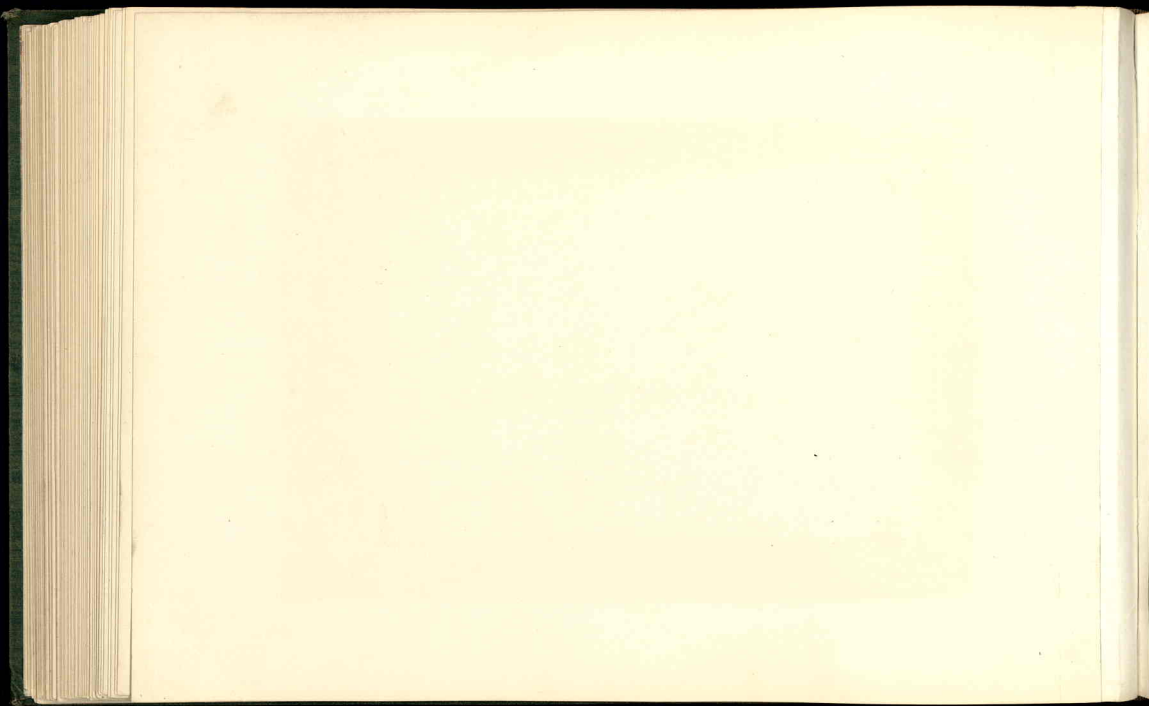




JULIO MEXICANO

Fotografía JULIO MEXICANO

TIPOS MEXICANOS
N.º 8





REV. DOMINGO ESTEBAN VARELA

PRELADO DE SAN VICENTE

TIPOS MEXICANOS

Nº 3

3





Mrs. MORGAN Editor Mexico

Prograda, TIPO MEXICANO.

TIPOS MEXICANOS

Nº 10



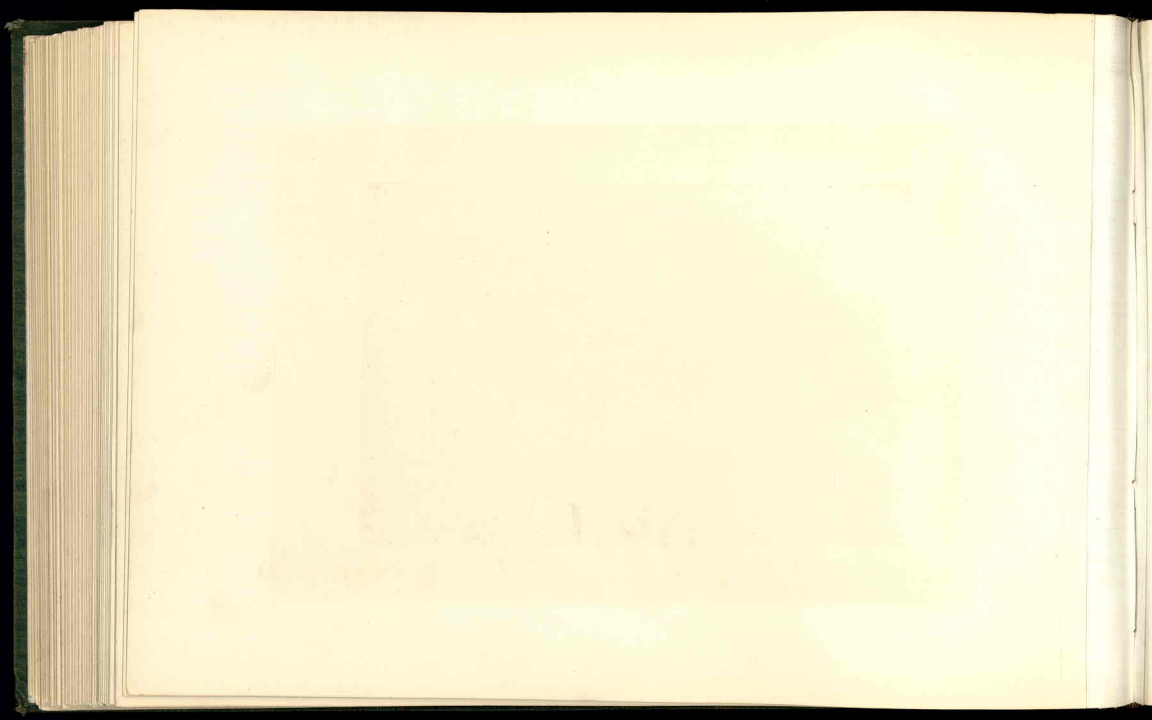


J. DEBORDÉ. Paris. France.

Phototypia. J. DEBORDÉ.

TIPOS MEXICANOS

Nº 11





PHOTOGRAPHER, MEXICO

PHOTOGRAPHER, MEXICO

TIPOS MEXICANOS

Nº 12

12

