

**Department of Human Services
Office of Mental Health and Addiction Services**

MHO UTILIZATION QUARTERLY REPORT

October 2004 through December 2004



**Report Produced by
Program Analysis and Evaluation Team
APRIL 2005**

EXECUTIVE SUMMARY
REPORT ON OREGON HEALTH PLAN (OHP)
UTILIZATION AND ENROLLMENT FOR
MENTAL HEALTH SERVICES:
SEPTEMBER 2004 THROUGH DECEMBER 2004

The following is a summary of the Mental Health Organization (MHO) Utilization Quarterly Report for the period of October 2004 through December 2004. This report contains enrollment, unique served and hospitalization data for the fourth quarter of 2004, which is the beginning of the contract year for the MHO's. The data for this report were pulled March 1, 2005. All information came from the Office of Medical Assistance Programs' (OMAP) Decision Support/Surveillance and Utilization Review System (DSSURS). There is a 180-day lag in encounter data submissions; this is reflected in the Hospital Data. **Any conclusions drawn from the information should consider lag in data submission into account.**

Previous MHO Utilization Report calculations were based on the total number of records within a specific quarter and divided by three (3) for a monthly average by quarter. However, in this report calculations are based on the total number of unique members for each of the quarters. The diagnosis and service categories within the Unique Served and the Hospital data will be based on the number of unique encounters per quarter.

ENROLLMENT DATA

- ❖ Enrollment for all MHO's shows a slight increase of 0.23% for the timelines of this report. As the OHP cuts back on those enrolled in Standard, a decrease will continue to be reflected in future reports.

UNIQUE SERVED DATA

- ❖ The number of served shows a decline of 49.1%. This calculation is based on the number served in December 2004 compared to October 2004. However, due to the lag in submission of data to DSSURS, the fourth quarter of 2004 can be slightly under reported at the time the data was pulled.

TABLE OF CONTENTS

The format and contents are constructed as follows:

- Figures are used to illustrate trends in statewide data.
- Tables are used to summarize quarterly data at the MHO level. Some tables include FFS and All Eligibles.



Executive Summary i

Enrollment Data

Figure 1: Enrolled by Quarter 1
Table 1: Enrolled by Quarter 1
Table 2: Enrolled by Gender..... 2
Figure 2: Total Enrolled Children (0-17) And Adults (18+) 3
Table 3: Total Enrolled Children (0-17) and Adults (18+): 3
Figure 3: Total Enrolled by Age Groups..... 4
Table 4: Enrolled by Age Groups 4
Figure 4: Percentage of Total Enrolled by Ethnicity 6
Table 4: Enrolled by Ethnicity 6

Unique Served Data

Figure 4: Unique Members Served by Quarter 10
Table 5: Unique Members Served by Quarter with Penetration Rate 10
Table 6: Unique Members Served by Gender with Penetration Rate..... 11
Figure 5: Unique Members Served Children (0-17) and Adults (18+) 12
Table 7: Unique Members Served Children (0-17) and Adults (18+) 12
Table 8: Unique Members Served by Age Groups with Penetration Rate 13
Figure 6: Percentage of Unique Members Served by Ethnicity 14
Table 9: Unique Members Served by Ethnicity with Penetration Rate 14

| | |
|---|----|
| Figure 7: Unique Encounters by Service Categories..... | 18 |
| Table 10: Unique Encounters by Service Categories | |
| ABHA* | 18 |
| Clackamas & FamilyCare | 19 |
| GOBHI & JBH | 20 |
| LaneCare & MVBCN..... | 21 |
| Verity** & Washington..... | 22 |
| Total Encounters & FFS | 23 |
| Figure 8: Unique Members Served by Diagnostic Groups..... | 24 |
| Table 11: Unique Members Served by Diagnostic Groups: | |
| ABHA* | 24 |
| Clackamas, FamilyCare & GOBHI..... | 25 |
| JBH, LaneCare & MVBCN..... | 26 |
| Verity** & Washington..... | 27 |
| Total Encounters & FFS | 28 |

[Hospital Data](#)

| | |
|--|----|
| Table 12: Unique Hospital Admissions per 1,000 Members..... | 30 |
| Table 13: Unique Hospital Admissions by Age Groups per 1,000 Members | 30 |
| Table 14: Unique Hospital Admissions by Age Groups per 1,000 Members | 31 |
| Table 15: Total Unique Hospital Days | 31 |
| Table 16: Total Unique Hospital Days by Age Group..... | 32 |
| Table 17: Percent of Hospital Re-Admission within 30 days..... | 33 |
| Table 18: Total Hospital Re-Admission within 180 days | 33 |
| Figure 9: Enrolled Members Seen within 7 Days of Discharge..... | 34 |
| Table 21: Enrolled Members Seen within 7 Days of Discharge: by MHO | 34 |
| | |
| MHO Utilization Report Glossary | 30 |
| Enrollment Numbers per Month by MHO | 32 |
| Number Served per Month by MHO | 33 |



Enrollment Data

- ❖ Enrolled: Eligible for OHP and enrolled in an MHO
- ❖ Eligibles: Both Enrolled and FFS
- ❖ Fee-For-Service (FFS): Eligible for OHP and NOT enrolled with an MHO (Open Card)

FIGURE 1: ENROLLED¹

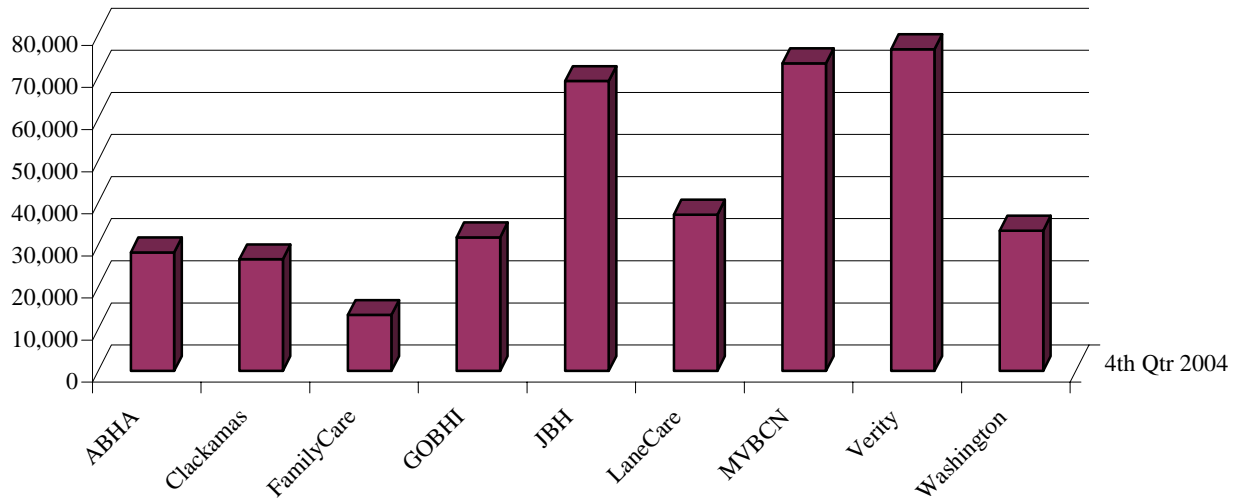


TABLE 1: ENROLLED BY MHO

| MHO Contractors | 4 th Qtr 2004 | % Enrolled |
|------------------------------------|--------------------------|------------|
| ABHA* | 28,169 | 6.6% |
| Clackamas | 26,528 | 6.2% |
| FamilyCare | 13,324 | 3.1% |
| GOBHI | 31,755 | 7.4% |
| JBH | 68,886 | 16.1% |
| LaneCare | 37,132 | 8.7% |
| MVBCN | 73,118 | 17.1% |
| Verity** | 76,454 | 17.9% |
| Washington | 33,334 | 7.8% |
| Total Enrolled | 388,700 | 90.9% |
| All Eligibles ² | 427,838 | 100.0% |
| Fee-For-Service (FFS) ³ | 91,769 | 21.4% |

¹ Enrolled: Eligible for OHP and enrolled in an MHO

² Eligibles: Both Enrolled and FFS

³ Fee-For-Service (FFS): Eligible for OHP and NOT enrolled with an MHO (Open Card)

TABLE 2: ENROLLED¹ BY GENDER

| MHO Contractors | Gender | 4 th Qtr 2004 |
|------------------------------------|--------|--------------------------|
| ABHA* | F | 16,014 |
| | M | 12,155 |
| Clackamas | F | 15,109 |
| | M | 11,419 |
| FamilyCare | F | 7,390 |
| | M | 5,934 |
| GOBHI | F | 18,094 |
| | M | 13,661 |
| JBH | F | 39,271 |
| | M | 29,615 |
| LaneCare | F | 21,330 |
| | M | 15,802 |
| MVBCN | F | 41,111 |
| | M | 32,007 |
| Verity** | F | 42,579 |
| | M | 33,875 |
| Washington | F | 18,752 |
| | M | 14,582 |
| Statewide Average by Quarter | F | 219,650 |
| | M | 169,050 |
| All Eligibles ² | F | 244,914 |
| | M | 183,597 |
| Fee-For-Service ³ (FFS) | F | 54,313 |
| | M | 37,456 |

¹ Enrolled: Eligible for OHP and enrolled in an MHO

² Eligibles: Both Enrolled and FFS

³ Fee-For-Service (FFS): Eligible for OHP and NOT enrolled with an MHO (Open Card)

Data Source: DSSURS – Data Pulled: 3/1/05

* ABHA has low outpatient numbers due to problems with new encounter data submission formats, which is being corrected.

**Verity has low inpatient numbers due to problems with new encounter data submission formats, which is being corrected.

FIGURE 2: ENROLLED¹ CHILDREN (0-17) AND ADULTS (18+)

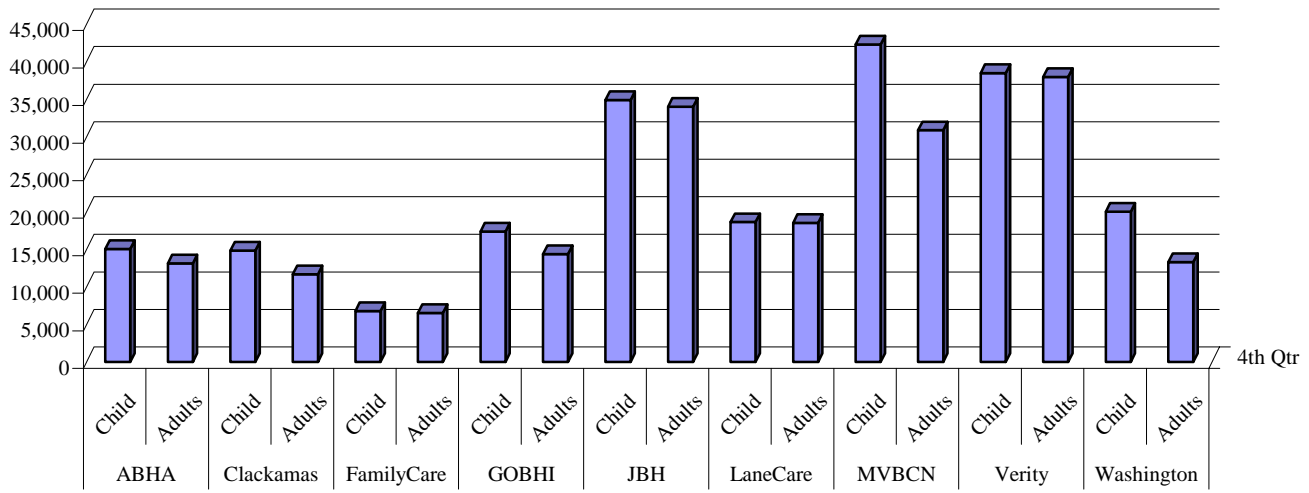


TABLE 3: ENROLLED CHILDREN (0-17) AND ADULTS (18+)

| MHO Contractors | Age Group | 4 th Qtr | Percent by MHO Total |
|-----------------|-----------|---------------------|----------------------|
| ABHA* | Children | 15,044 | 53.4% |
| | Adults | 13,125 | 46.6% |
| Clackamas | Children | 14,843 | 56.0% |
| | Adults | 11,685 | 44.0% |
| FamilyCare | Children | 6,782 | 50.9% |
| | Adults | 6,542 | 49.1% |
| GOBHI | Children | 17,376 | 54.7% |
| | Adults | 14,379 | 45.3% |
| JBH | Children | 34,880 | 50.6% |
| | Adults | 34,006 | 49.4% |
| LaneCare | Children | 18,621 | 50.1% |
| | Adults | 18,511 | 49.9% |
| MVBCN | Children | 42,255 | 57.8% |
| | Adults | 30,863 | 42.2% |
| Verity** | Children | 38,487 | 50.3% |
| | Adults | 37,967 | 49.7% |
| Washington | Children | 20,011 | 60.0% |
| | Adults | 13,323 | 40.0% |

¹ Enrolled: Eligible for OHP and enrolled in an MHO

Data Source: DSSURS – Data Pulled: 3/1/05

* ABHA has low outpatient numbers due to problems with new encounter data submission formats, which is being corrected.

**Verity has low inpatient numbers due to problems with new encounter data submission formats, which is being corrected.

FIGURE 3: TOTAL ENROLLED BY AGE GROUPS

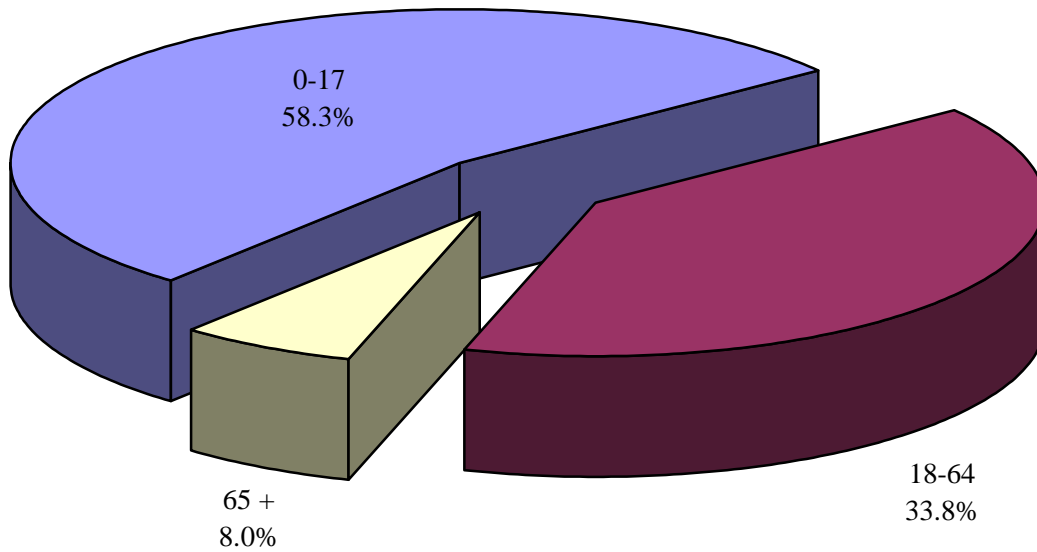


TABLE 4: Enrolled¹ by Age Groups

| MHO Contractors | Age Groups | 4 th Qtr 2004 | Percent by MHO Total |
|-----------------|------------|--------------------------|----------------------|
| ABHA* | 0-17 | 15,044 | 53.4% |
| | 18-64 | 11,425 | 40.6% |
| | 65 + | 1,700 | 6.0% |
| Clackamas | 0-17 | 14,843 | 56.0% |
| | 18-64 | 9,759 | 36.8% |
| | 65 + | 1,926 | 7.3% |
| FamilyCare | 0-17 | 6,782 | 50.9% |
| | 18-64 | 6,214 | 46.6% |
| | 65 + | 328 | 2.5% |
| GOBHI | 0-17 | 17,376 | 54.7% |
| | 18-64 | 12,171 | 38.3% |
| | 65 + | 2,208 | 7.0% |
| JBH | 0-17 | 34,880 | 50.6% |
| | 18-64 | 29,553 | 42.9% |
| | 65 + | 4,453 | 6.5% |

¹ Enrolled: Eligible for OHP and enrolled in an MHO

Data Source: DSSURS – Data Pulled: 3/1/05

* ABHA has low outpatient numbers due to problems with new encounter data submission formats, which is being corrected.

**Verity has low inpatient numbers due to problems with new encounter data submission formats, which is being corrected.

TABLE 4: Enrolled¹ by Age Groups (continued)

| MHO Contractors | Age Groups | 4 th Qtr 2004 | Percent by MHO Total |
|------------------------------|------------|--------------------------|----------------------|
| LaneCare | 0-17 | 18,621 | 50.1% |
| | 18-64 | 16,656 | 44.9% |
| | 65 + | 1,855 | 5.0% |
| MVBCN | 0-17 | 42,255 | 57.8% |
| | 18-64 | 26,655 | 36.5% |
| | 65 + | 4,208 | 5.8% |
| Verity** | 0-17 | 38,487 | 50.3% |
| | 18-64 | 31,861 | 41.7% |
| | 65 + | 6,106 | 8.0% |
| Washington | 0-17 | 20,011 | 60.0% |
| | 18-64 | 11,053 | 33.2% |
| | 65 + | 2,270 | 6.8% |
| Statewide Average by Quarter | 0-17 | 208,299 | |
| | 18-64 | 155,347 | |
| | 65 + | 25,054 | |

Note: All Eligibles and FFS data does not have accurate recipient date of birth and is not included in this specific data table.

¹ Enrolled: Eligible for OHP and enrolled in an MHO

FIGURE 4: PERCENTAGE OF TOTAL ENROLLED¹ BY ETHNICITY

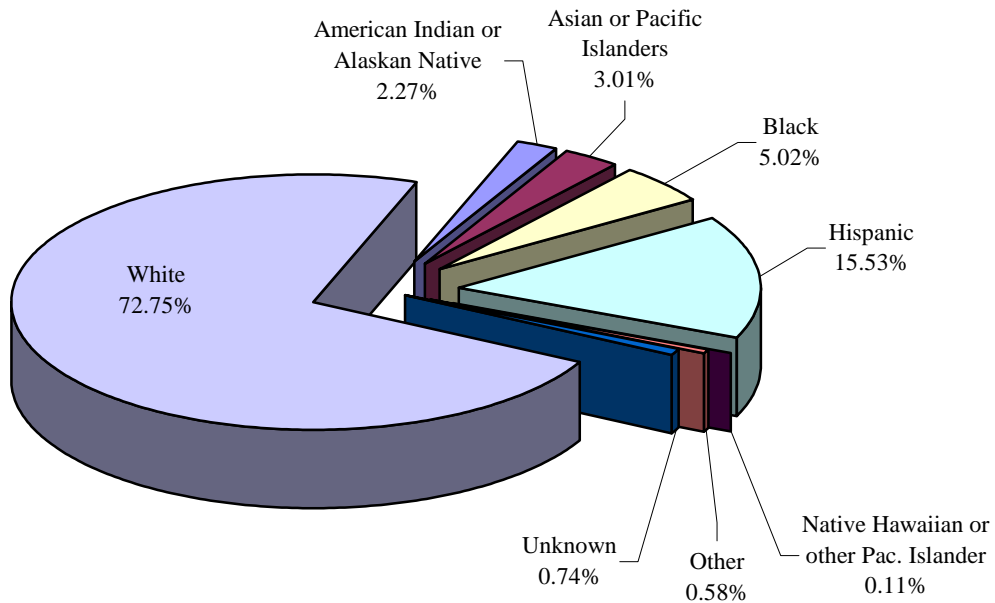


TABLE 4: ENROLLED BY ETHNICITY

| MHO Contractors | Ethnicity | 4 th Qtr 2004 | Percent by MHO Total |
|-----------------|--|--------------------------|----------------------|
| ABHA* | American Indian or Alaskan Native | 1,333 | 4.7% |
| | Asian or Pacific Islanders | 234 | 0.8% |
| | Black | 264 | 0.9% |
| | Hispanic | 2,788 | 9.9% |
| | Native Hawaiian or other Pac. Islander | 22 | 0.1% |
| | Other | 138 | 0.5% |
| | Unknown | 172 | 0.6% |
| | White | 23,218 | 82.4% |
| Clackamas | American Indian or Alaskan Native | 392 | 1.5% |
| | Asian or Pacific Islanders | 476 | 1.8% |
| | Black | 483 | 1.8% |
| | Hispanic | 4,623 | 17.4% |
| | Native Hawaiian or other Pac. Islander | 23 | 0.1% |
| | Other | 147 | 0.6% |
| | Unknown | 171 | 0.6% |
| | White | 20,213 | 76.2% |

¹ Enrolled: Eligible for OHP and enrolled in an MHO

Data Source: DSSURS – Data Pulled: 3/1/05

* ABHA has low outpatient numbers due to problems with new encounter data submission formats, which is being corrected.

**Verity has low inpatient numbers due to problems with new encounter data submission formats, which is being corrected.

TABLE 4: ENROLLED¹ BY ETHNICITY (Continued)

| MHO Contractors | Ethnicity | 4th Qtr | Percent of MHO Total |
|------------------------|--|---------------------------|-----------------------------|
| FamilyCare | American Indian or Alaskan Native | 192 | 1.4% |
| | Asian or Pacific Islanders | 764 | 5.7% |
| | Black | 1,564 | 11.7% |
| | Hispanic | 1,308 | 9.8% |
| | Native Hawaiian or other Pac. Islander | 9 | 0.1% |
| | Other | 118 | 0.9% |
| | Unknown | 55 | 0.4% |
| | White | 9,314 | 69.9% |
| GOBHI | American Indian or Alaskan Native | 796 | 2.5% |
| | Asian or Pacific Islanders | 188 | 0.6% |
| | Black | 325 | 1.0% |
| | Hispanic | 6,096 | 19.2% |
| | Native Hawaiian or other Pac. Islander | 21 | 0.1% |
| | Other | 135 | 0.4% |
| | Unknown | 251 | 0.8% |
| | White | 23,943 | 75.4% |
| JBH | American Indian or Alaskan Native | 2,114 | 3.1% |
| | Asian or Pacific Islanders | 354 | 0.5% |
| | Black | 664 | 1.0% |
| | Hispanic | 5,309 | 7.7% |
| | Native Hawaiian or other Pac. Islander | 70 | 0.1% |
| | Other | 250 | 0.4% |
| | Unknown | 572 | 0.8% |
| | White | 59,553 | 86.5% |
| LaneCare | American Indian or Alaskan Native | 705 | 1.9% |
| | Asian or Pacific Islanders | 519 | 1.4% |
| | Black | 895 | 2.4% |
| | Hispanic | 2,694 | 7.3% |
| | Native Hawaiian or other Pac. Islander | 31 | 0.1% |
| | Other | 207 | 0.6% |
| | Unknown | 392 | 1.1% |
| | White | 31,689 | 85.3% |

¹ Enrolled: Eligible for OHP and enrolled in an MHO

Data Source: DSSURS – Data Pulled: 3/1/05

* ABHA has low outpatient numbers due to problems with new encounter data submission formats, which is being corrected.

**Verity has low inpatient numbers due to problems with new encounter data submission formats, which is being corrected.

TABLE 4: ENROLLED¹ BY ETHNICITY (Continued)

| MHO Contractors | Ethnicity | 4th Qtr 2004 | Percent of MHO Total |
|------------------------|--|--------------------------------|-----------------------------|
| MVBCN | American Indian or Alaskan Native | 1,408 | 1.9% |
| | Asian or Pacific Islanders | 950 | 1.3% |
| | Black | 1,034 | 1.4% |
| | Hispanic | 17,062 | 23.3% |
| | Native Hawaiian or other Pac. Islander | 142 | 0.2% |
| | Other | 328 | 0.4% |
| | Unknown | 442 | 0.6% |
| | White | 51,752 | 70.8% |
| Verity** | American Indian or Alaskan Native | 1,583 | 2.1% |
| | Asian or Pacific Islanders | 6,113 | 8.0% |
| | Black | 12,646 | 16.5% |
| | Hispanic | 10,685 | 14.0% |
| | Native Hawaiian or other Pac. Islander | 50 | 0.1% |
| | Other | 641 | 0.8% |
| | Unknown | 499 | 0.7% |
| | White | 44,237 | 57.9% |
| Washington | American Indian or Alaskan Native | 290 | 0.9% |
| | Asian or Pacific Islanders | 2,085 | 6.3% |
| | Black | 1,619 | 4.9% |
| | Hispanic | 9,786 | 29.4% |
| | Native Hawaiian or other Pac. Islander | 43 | 0.1% |
| | Other | 294 | 0.9% |
| | Unknown | 341 | 1.0% |
| | White | 18,876 | 56.6% |

¹ Enrolled: Eligible for OHP and enrolled in an MHO

Data Source: DSSURS – Data Pulled: 3/1/05

* ABHA has low outpatient numbers due to problems with new encounter data submission formats, which is being corrected.

**Verity has low inpatient numbers due to problems with new encounter data submission formats, which is being corrected.

TABLE 4: ENROLLED¹ BY ETHNICITY (Continued)

| MHO Contractors | Ethnicity | 4th Qtr 2004 |
|---------------------------------------|--|--------------------------------|
| Statewide Totals | American Indian or Alaskan Native | 8,813 |
| | Asian or Pacific Islanders | 11,683 |
| | Black | 19,494 |
| | Hispanic | 60,351 |
| | Native Hawaiian or other Pac. Islander | 411 |
| | Other | 2,258 |
| | Unknown | 2,895 |
| | White | 282,795 |
| All Eligibles ² | American Indian or Alaskan Native | 10,516 |
| | Asian or Pacific Islanders | 12,974 |
| | Black | 19,738 |
| | Hispanic | 79,738 |
| | Native Hawaiian or other Pac. Islander | 508 |
| | Other | 2,383 |
| | Unknown | 3,024 |
| | White | 299,630 |
| Fee-For-Service ³ (FFS) | American Indian or Alaskan Native | 2,469 |
| | Asian or Pacific Islanders | 3,109 |
| | Black | 2,700 |
| | Hispanic | 28,996 |
| | Native Hawaiian or other Pac. Islander | 166 |
| | Other | 464 |
| | Unknown | 595 |
| | White | 53,271 |

¹ Enrolled: Eligible for OHP and enrolled in an MHO

² Eligibles: Both Enrolled and FFS

³ Fee-For-Service (FFS): Eligible for OHP and NOT enrolled with an MHO (Open Card)

Unique Served
&
Penetration Rates
Within Specific Categories

FIGURE 4: UNIQUE¹ MEMBERS SERVED

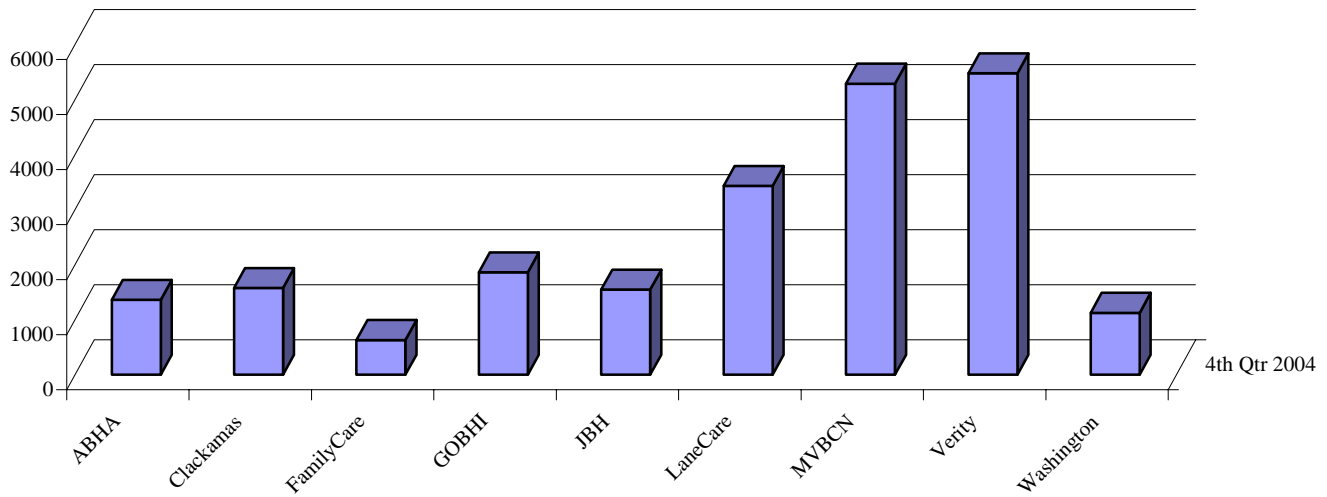


TABLE 5: UNIQUE MEMBERS SERVED WITH PENETRATION² RATE

| MHO Contractors | 4th Qtr 2004 | Rate |
|-----------------|--------------|------|
| ABHA* | 1,363 | 4.8% |
| Clackamas | 1,578 | 5.9% |
| FamilyCare | 632 | 4.7% |
| GOBHI | 1,863 | 5.9% |
| JBH | 1,546 | 2.2% |
| LaneCare | 3,432 | 9.2% |
| MVBCN | 5,286 | 7.2% |
| Verity** | 5,476 | 7.2% |
| Washington | 1,126 | 3.4% |
| Total Served | 22,302 | 5.7% |
| FFS | 1,125 | 1.2% |

¹ Unique Served: All duplicated records are removed.

² Penetration Rate: Unique Served divided by Enrolled.

Data Source: DSSURS – Data pulled: 3/1/05

* ABHA has low outpatient numbers due to problems with new encounter data submission formats, which is being corrected.

**Verity has low inpatient numbers due to problems with new encounter data submission formats, which is being corrected.

TABLE 6: UNIQUE¹ MEMBERS SERVED BY GENDER WITH PENETRATION² RATE

| MHO Contractor | Gender | 4th Qtr 2004 | Rate |
|-----------------------|--------|--------------|------|
| ABHA* | F | 813 | 5.1% |
| | M | 550 | 4.5% |
| Clackamas | F | 876 | 5.8% |
| | M | 702 | 6.1% |
| FamilyCare | F | 372 | 5.0% |
| | M | 260 | 4.4% |
| GOBHI | F | 1,038 | 5.7% |
| | M | 825 | 6.0% |
| JBH | F | 857 | 2.2% |
| | M | 689 | 2.3% |
| LaneCare | F | 2,012 | 9.4% |
| | M | 1,420 | 9.0% |
| MVBCN | F | 3,031 | 7.4% |
| | M | 2,255 | 7.0% |
| Verity** | F | 3,009 | 7.1% |
| | M | 2,467 | 7.3% |
| Washington | F | 645 | 3.4% |
| | M | 481 | 3.3% |
| Total Served | F | 12,653 | 5.8% |
| | M | 9,649 | 5.7% |
| Fee-For-Service (FFS) | F | 481 | 0.9% |
| | M | 644 | 1.7% |

¹ Unique Served: All duplicate records are removed.

² Penetration Rate: Unique Served divided by Enrolled

Data Source: DSSURS – Data Pulled: 3/1/05

* ABHA has low outpatient numbers due to problems with new encounter data submission formats, which is being corrected.

**Verity has low inpatient numbers due to problems with new encounter data submission formats, which is being corrected.

FIGURE 5: UNIQUE¹ MEMBERS SERVED CHILDREN (0-17) & ADULTS (18+)

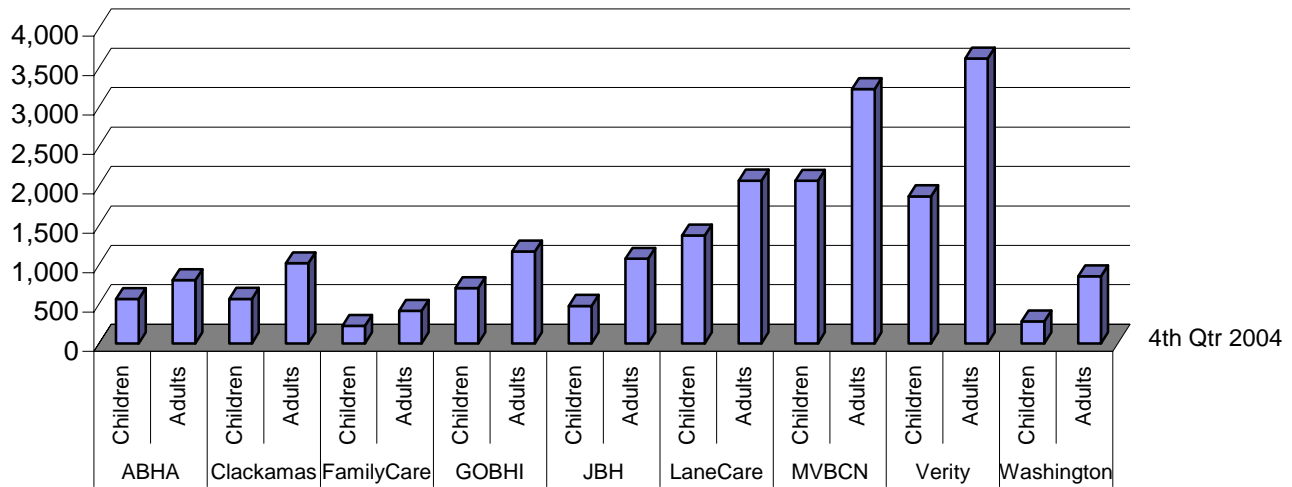


TABLE 7: UNIQUE MEMBERS SERVED CHILDREN (0-17) AND ADULTS (18+)

| MHO Contractors | Age Groups | 4 th Qtr 2004 | Percent of MHO Total |
|-----------------|------------|--------------------------|----------------------|
| ABHA* | Children | 561 | 41.2% |
| | Adults | 802 | 58.8% |
| Clackamas | Children | 563 | 35.7% |
| | Adults | 1,015 | 64.3% |
| FamilyCare | Children | 220 | 34.8% |
| | Adults | 412 | 65.2% |
| GOBHI | Children | 698 | 37.5% |
| | Adults | 1,165 | 62.5% |
| JBH | Children | 474 | 30.7% |
| | Adults | 1,072 | 69.3% |
| LaneCare | Children | 1,369 | 39.9% |
| | Adults | 2,063 | 60.1% |
| MVBCN | Children | 2,061 | 39.0% |
| | Adults | 3,225 | 61.0% |
| Verity** | Children | 1,864 | 34.0% |
| | Adults | 3,612 | 66.0% |
| Washington | Children | 277 | 24.6% |
| | Adults | 849 | 75.4% |

¹ Unique Served: All duplicate records are removed.

Data Source: DSSURS – Data Pulled: 3/1/05

* ABHA has low outpatient numbers due to problems with new encounter data submission formats, which is being corrected.

**Verity has low inpatient numbers due to problems with new encounter data submission formats, which is being corrected.

TABLE 8: UNIQUE¹ MEMBERS SERVED BY AGE GROUP WITH PENETRATION² RATE

| MHO Contractors | Age Groups | 4th Qtr 2004 | Rate |
|-----------------|------------|--------------|-------|
| ABHA* | 0-17 | 561 | 3.7% |
| | 18-64 | 767 | 6.7% |
| | 65+ | 35 | 2.1% |
| Clackamas | 0-17 | 563 | 3.8% |
| | 18-64 | 976 | 10.0% |
| | 65+ | 39 | 2.0% |
| FamilyCare | 0-17 | 220 | 3.2% |
| | 18-64 | 407 | 6.5% |
| | 65+ | 5 | 1.5% |
| GOBHI | 0-17 | 698 | 4.0% |
| | 18-64 | 1,118 | 9.2% |
| | 65+ | 47 | 2.1% |
| JBH | 0-17 | 474 | 1.4% |
| | 18-64 | 1,042 | 3.5% |
| | 65+ | 30 | 0.7% |
| LaneCare | 0-17 | 1,369 | 7.4% |
| | 18-64 | 2,019 | 12.1% |
| | 65+ | 44 | 2.4% |
| MVBCN | 0-17 | 2,061 | 4.9% |
| | 18-64 | 3,064 | 11.5% |
| | 65+ | 161 | 3.8% |
| Verity** | 0-17 | 1,864 | 4.8% |
| | 18-64 | 3,396 | 10.7% |
| | 65+ | 216 | 3.5% |
| Washington | 0-17 | 277 | 1.4% |
| | 18-64 | 805 | 7.3% |
| | 65+ | 44 | 1.9% |
| Total Served | 0-17 | 8,087 | 3.9% |
| | 18-64 | 13,594 | 8.8% |
| | 65+ | 621 | 2.5% |

Note: FFS data does not have accurate recipient date of birth and is not included in this specific data table.

¹ Unique Served: All duplicate records are removed.

² Penetration Rate: Unique Served divided by Enrolled.

Data Source: DSSURS – Data Pulled: 3/1/05

* ABHA has low outpatient numbers due to problems with new encounter data submission formats, which is being corrected.

**Verity has low inpatient numbers due to problems with new encounter data submission formats, which is being corrected.

FIGURE 6: PERCENTAGE OF TOTAL UNIQUE¹ MEMBERS SERVED BY ETHNICITY

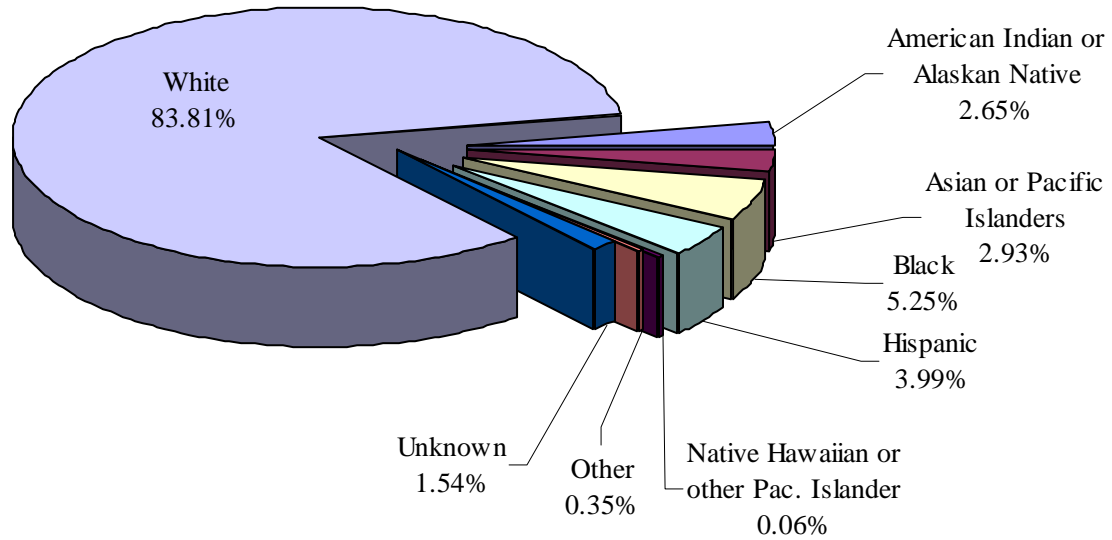


TABLE 9: UNIQUE MEMBERS SERVED BY ETHNICITY WITH PENETRATION² RATE

| MHO Contractors | Race Description | 4 th Qtr | Rate |
|-----------------|-------------------------------------|---------------------|-------|
| ABHA* | American Indian or Alaskan Native | 19 | 1.4% |
| | Asian or Pacific Islanders | 3 | 1.3% |
| | Black | 7 | 2.7% |
| | Hispanic | 30 | 1.1% |
| | Native Hawaiian/other Pac. Islander | 1 | 4.5% |
| | Other | 4 | 2.9% |
| | Unknown | 23 | 13.4% |
| | White | 1,276 | 5.5% |
| Clackamas | American Indian or Alaskan Native | 20 | 5.1% |
| | Asian or Pacific Islanders | 20 | 4.2% |
| | Black | 29 | 6.0% |
| | Hispanic | 46 | 1.0% |
| | Native Hawaiian/other Pac. Islander | 3 | 13.0% |
| | Other | 5 | 3.4% |
| | Unknown | 19 | 11.1% |
| | White | 1,436 | 7.1% |

¹ Unique Served: All duplicate records are removed.

² Penetration Rate: Unique Served divided by Enrolled.

TABLE 9: UNIQUE¹ MEMBERS SERVED BY ETHNICITY WITH PENETRATION² RATE (continued)

| MHO Contractors | Race Description | 4th Qtr | Rate |
|-----------------|-------------------------------------|---------|-------|
| FamilyCare | American Indian or Alaskan Native | 13 | 6.8% |
| | Asian or Pacific Islanders | 28 | 3.7% |
| | Black | 68 | 4.3% |
| | Hispanic | 18 | 1.4% |
| | Native Hawaiian/other Pac. Islander | 0 | 0.0% |
| | Other | 1 | 0.8% |
| | Unknown | 5 | 9.1% |
| | White | 499 | 5.4% |
| GOBHI | American Indian or Alaskan Native | 56 | 7.0% |
| | Asian or Pacific Islanders | 7 | 3.7% |
| | Black | 20 | 6.2% |
| | Hispanic | 131 | 2.1% |
| | Native Hawaiian/other Pac. Islander | 1 | 4.8% |
| | Other | 4 | 3.0% |
| | Unknown | 31 | 12.4% |
| | White | 1,613 | 6.7% |
| JBH | American Indian or Alaskan Native | 58 | 2.7% |
| | Asian or Pacific Islanders | 8 | 2.3% |
| | Black | 28 | 4.2% |
| | Hispanic | 46 | 0.9% |
| | Native Hawaiian/other Pac. Islander | 1 | 1.4% |
| | Other | 5 | 2.0% |
| | Unknown | 17 | 3.0% |
| | White | 1,383 | 2.3% |
| LaneCare | American Indian or Alaskan Native | 61 | 8.7% |
| | Asian or Pacific Islanders | 23 | 4.4% |
| | Black | 77 | 8.6% |
| | Hispanic | 84 | 3.1% |
| | Native Hawaiian/other Pac. Islander | 1 | 3.2% |
| | Other | 16 | 7.7% |
| | Unknown | 96 | 24.5% |
| | White | 3,074 | 9.7% |

¹ Unique Served: All duplicate records are removed.

² Penetration Rate: Unique Served divided by Enrolled.

Data Source: DSSURS – Data Pulled: 3/1/05

* ABHA has low outpatient numbers due to problems with new encounter data submission formats, which is being corrected.

**Verity has low inpatient numbers due to problems with new encounter data submission formats, which is being corrected.

TABLE 9: UNIQUE¹ MEMBERS SERVED BY ETHNICITY WITH PENETRATION² RATE (continued)

| MHO Contractors | Race Description | 4th Qtr | Rate |
|------------------------|-------------------------------------|---------------------------|-------------|
| MVBCN | American Indian or Alaskan Native | 151 | 10.7% |
| | Asian or Pacific Islanders | 48 | 5.1% |
| | Black | 94 | 9.1% |
| | Hispanic | 298 | 1.7% |
| | Native Hawaiian/other Pac. Islander | 5 | 3.5% |
| | Other | 10 | 3.0% |
| | Unknown | 79 | 17.9% |
| | White | 4,601 | 8.9% |
| Verity** | American Indian or Alaskan Native | 199 | 12.6% |
| | Asian or Pacific Islanders | 400 | 6.5% |
| | Black | 795 | 6.3% |
| | Hispanic | 177 | 1.7% |
| | Native Hawaiian/other Pac. Islander | 1 | 2.0% |
| | Other | 26 | 4.1% |
| | Unknown | 61 | 12.2% |
| | White | 3,817 | 8.6% |
| Washington | American Indian or Alaskan Native | 14 | 4.8% |
| | Asian or Pacific Islanders | 116 | 5.6% |
| | Black | 53 | 3.3% |
| | Hispanic | 59 | 0.6% |
| | Native Hawaiian/other Pac. Islander | 1 | 2.3% |
| | Other | 8 | 2.7% |
| | Unknown | 12 | 3.5% |
| | White | 863 | 4.6% |

¹ Unique Served: All duplicate records are removed.

² Penetration Rate: Unique Served divided by Enrolled.

TABLE 9: UNIQUE¹ MEMBERS SERVED BY ETHNICITY WITH PENETRATION² RATE (continued)

| MHO Contractors | Race Description | 4th Qtr | Rate |
|------------------------|-------------------------------------|---------------------------|-------------|
| Total Served | American Indian or Alaskan Native | 591 | 6.7% |
| | Asian or Pacific Islanders | 653 | 5.6% |
| | Black | 1,171 | 6.0% |
| | Hispanic | 889 | 1.5% |
| | Native Hawaiian/other Pac. Islander | 14 | 3.4% |
| | Other | 79 | 3.5% |
| | Unknown | 343 | 11.8% |
| | White | 18,562 | 6.6% |
| FFS | American Indian or Alaskan Native | 37 | 1.5% |
| | Asian or Pacific Islanders | 12 | 0.4% |
| | Black | 56 | 2.1% |
| | Hispanic | 36 | 0.1% |
| | Native Hawaiian/other Pac. Islander | 2 | 1.2% |
| | Other | 0 | 0.0% |
| | Unknown | 24 | 4.0% |
| | White | 958 | 1.8% |

¹ Unique Served: All duplicate records are removed.

² Penetration Rate: Unique Served divided by Enrolled.

FIGURE 7: TOTAL UNIQUE¹ ENCOUNTERS BY SERVICE CATEGORIES

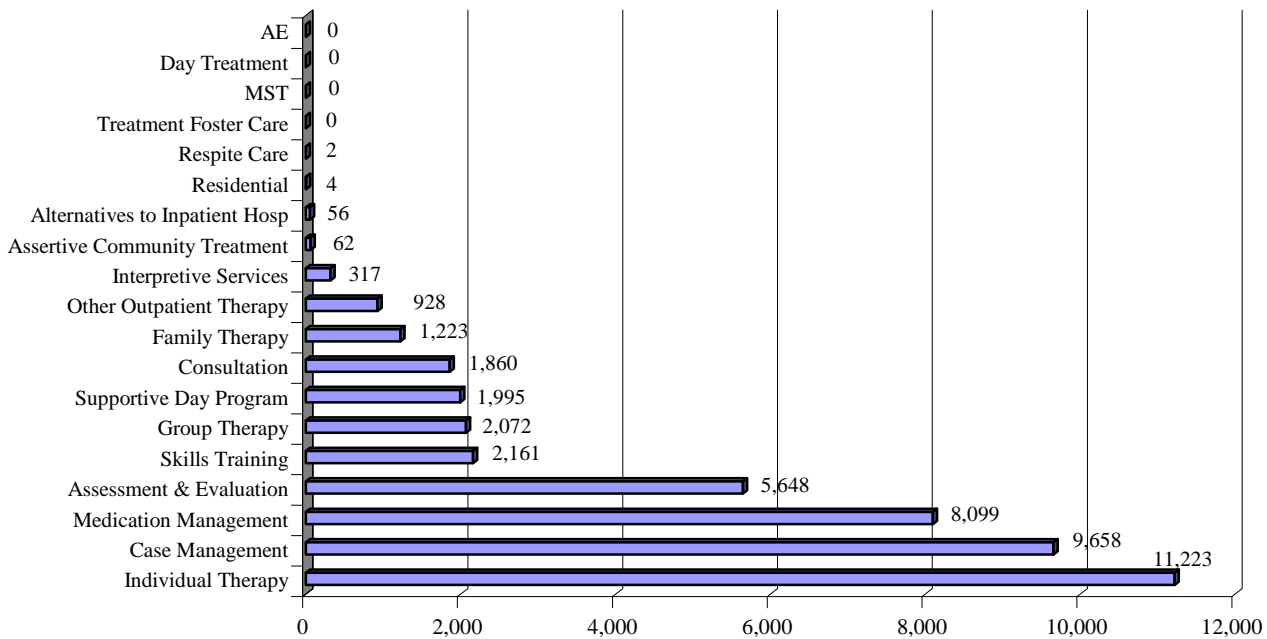


TABLE 10: UNIQUE ENCOUNTERS BY SERVICE CATEGORIES (ABHA)

| MHO Contractors | Service Categories | 4 th Qtr 2004 |
|-----------------|--------------------------------|--------------------------|
| ABHA* | AE | 0 |
| | Alternatives to Inpatient Hosp | 0 |
| | Assertive Community Treatment | 6 |
| | Assessment & Evaluation | 434 |
| | Case Management | 503 |
| | Consultation | 189 |
| | Day Treatment | 0 |
| | Family Therapy | 102 |
| | Group Therapy | 146 |
| | Individual Therapy | 821 |
| | Interpretive Services | 1 |
| | Medication Management | 452 |
| | MST | 0 |
| | Other Outpatient Therapy | 16 |
| | Residential | 0 |
| | Respite Care | 0 |
| | Skills Training | 54 |
| | Supportive Day Program | 98 |
| | Treatment Foster Care | 0 |

¹ Unique: All duplicate records are removed.

Data Source: DSSURS – Data Pulled: 3/1/05

* ABHA has low outpatient numbers due to problems with new encounter data submission formats, which is being corrected.

**Verity has low inpatient numbers due to problems with new encounter data submission formats, which is being corrected.

**TABLE 10: UNIQUE¹ ENCOUNTERS BY SERVICE CATEGORIES
(CLACKAMAS & FAMILYCARE) (Continued)**

| MHO Contractors | Service Categories | 4 th Qtr 2004 |
|--------------------------------|--------------------------------|-----------------------------|
| Clackamas | AE | 0 |
| | Alternatives to Inpatient Hosp | 3 |
| | Assertive Community Treatment | 0 |
| | Assessment & Evaluation | 490 |
| | Case Management | 865 |
| | Consultation | 225 |
| | Day Treatment | 0 |
| | Family Therapy | 29 |
| | Group Therapy | 118 |
| | Individual Therapy | 644 |
| | Interpretive Services | 4 |
| | Medication Management | 476 |
| | MST | 0 |
| | Other Outpatient Therapy | 19 |
| | Residential | 4 |
| | Respite Care | 0 |
| | Skills Training | 94 |
| | Supportive Day Program | 92 |
| | Treatment Foster Care | 0 |
| | FamilyCare | AE |
| Alternatives to Inpatient Hosp | | 0 |
| Assertive Community Treatment | | 0 |
| Assessment & Evaluation | | 162 |
| Case Management | | 285 |
| Consultation | | 31 |
| Day Treatment | | 0 |
| Family Therapy | | 31 |
| Group Therapy | | 80 |
| Individual Therapy | | 281 |
| Interpretive Services | | 21 |
| Medication Management | | 226 |
| MST | | 0 |
| Other Outpatient Therapy | | 2 |
| Residential | | 0 |
| Respite Care | | 0 |
| Skills Training | | 57 |
| Supportive Day Program | | 63 |
| Treatment Foster Care | | 0 |

¹ Unique Served: All duplicate records are removed.

Data Source: DSSURS – Data Pulled: 3/1/05

* ABHA has low outpatient numbers due to problems with new encounter data submission formats, which is being corrected.

**Verity has low inpatient numbers due to problems with new encounter data submission formats, which is being corrected.

**TABLE 10: UNIQUE¹ ENCOUNTERS BY SERVICE CATEGORIES
(GOBHI & JBH) (Continued)**

| MHO Contractors | Service Categories | 4 th Qtr 2004 |
|--------------------------------|--------------------------------|-----------------------------|
| GOBHI | AE | 0 |
| | Alternatives to Inpatient Hosp | 0 |
| | Assertive Community Treatment | 13 |
| | Assessment & Evaluation | 533 |
| | Case Management | 949 |
| | Consultation | 113 |
| | Day Treatment | 0 |
| | Family Therapy | 85 |
| | Group Therapy | 181 |
| | Individual Therapy | 731 |
| | Interpretive Services | 1 |
| | Medication Management | 754 |
| | MST | 0 |
| | Other Outpatient Therapy | 121 |
| | Residential | 0 |
| | Respite Care | 2 |
| | Skills Training | 231 |
| | Supportive Day Program | 206 |
| | Treatment Foster Care | 0 |
| | JBH | AE |
| Alternatives to Inpatient Hosp | | 0 |
| Assertive Community Treatment | | 0 |
| Assessment & Evaluation | | 347 |
| Case Management | | 594 |
| Consultation | | 114 |
| Day Treatment | | 0 |
| Family Therapy | | 59 |
| Group Therapy | | 134 |
| Individual Therapy | | 525 |
| Interpretive Services | | 1 |
| Medication Management | | 675 |
| MST | | 0 |
| Other Outpatient Therapy | | 57 |
| Residential | | 0 |
| Respite Care | | 0 |
| Skills Training | | 99 |
| Supportive Day Program | | 84 |
| Treatment Foster Care | | 0 |

¹ Unique Served: All duplicate records are removed.

**TABLE 10: UNIQUE¹ ENCOUNTERS BY SERVICE CATEGORIES
(LANECARE & MVBCN) (Continued)**

| MHO Contractors | Service Categories | 4 th Qtr 2004 |
|--------------------------------|--------------------------------|-----------------------------|
| LaneCare | AE | 0 |
| | Alternatives to Inpatient Hosp | 20 |
| | Assertive Community Treatment | 27 |
| | Assessment & Evaluation | 870 |
| | Case Management | 960 |
| | Consultation | 242 |
| | Day Treatment | 0 |
| | Family Therapy | 147 |
| | Group Therapy | 161 |
| | Individual Therapy | 2,711 |
| | Interpretive Services | 8 |
| | Medication Management | 601 |
| | MST | 0 |
| | Other Outpatient Therapy | 577 |
| | Residential | 0 |
| | Respite Care | 0 |
| | Skills Training | 117 |
| | Supportive Day Program | 268 |
| | Treatment Foster Care | 0 |
| | MVBCN | AE |
| Alternatives to Inpatient Hosp | | 0 |
| Assertive Community Treatment | | 15 |
| Assessment & Evaluation | | 1,582 |
| Case Management | | 2,370 |
| Consultation | | 625 |
| Day Treatment | | 0 |
| Family Therapy | | 356 |
| Group Therapy | | 358 |
| Individual Therapy | | 3,048 |
| Interpretive Services | | 5 |
| Medication Management | | 2,349 |
| MST | | 0 |
| Other Outpatient Therapy | | 33 |
| Residential | | 0 |
| Respite Care | | 0 |
| Skills Training | | 400 |
| Supportive Day Program | | 91 |
| Treatment Foster Care | | 0 |

¹ Unique Served: All duplicate records are removed.

**TABLE 10: UNIQUE¹ ENCOUNTERS BY SERVICE CATEGORIES
(VERITY** & WASHINGTON) (Continued)**

| MHO Contractors | Service Categories | 4 th Qtr 2004 |
|--------------------------------|--------------------------------|-----------------------------|
| Verity*** | AE | 0 |
| | Alternatives to Inpatient Hosp | 33 |
| | Assertive Community Treatment | 0 |
| | Assessment & Evaluation | 899 |
| | Case Management | 2,743 |
| | Consultation | 257 |
| | Day Treatment | 0 |
| | Family Therapy | 400 |
| | Group Therapy | 800 |
| | Individual Therapy | 1,794 |
| | Interpretive Services | 172 |
| | Medication Management | 2,179 |
| | MST | 0 |
| | Other Outpatient Therapy | 100 |
| | Residential | 0 |
| | Respite Care | 0 |
| | Skills Training | 999 |
| | Supportive Day Program | 1,084 |
| | Treatment Foster Care | 0 |
| | Washington | AE |
| Alternatives to Inpatient Hosp | | 0 |
| Assertive Community Treatment | | 1 |
| Assessment & Evaluation | | 331 |
| Case Management | | 389 |
| Consultation | | 64 |
| Day Treatment | | 0 |
| Family Therapy | | 14 |
| Group Therapy | | 94 |
| Individual Therapy | | 668 |
| Interpretive Services | | 104 |
| Medication Management | | 387 |
| MST | | 0 |
| Other Outpatient Therapy | | 3 |
| Residential | | 0 |
| Respite Care | | 0 |
| Skills Training | | 110 |
| Supportive Day Program | | 9 |
| Treatment Foster Care | | 0 |

¹ Unique Served: All duplicate records are removed.

TABLE 10: UNIQUE¹ ENCOUNTERS BY SERVICE CATEGORIES
(Total Served & Fee-For-Service²) (CONTINUED)

| MHO Contractors | Service Categories | 4 th Qtr |
|-----------------------|--------------------------------|---------------------|
| Total Served | AE | 0 |
| | Alternatives to Inpatient Hosp | 56 |
| | Assertive Community Treatment | 62 |
| | Assessment & Evaluation | 5,648 |
| | Case Management | 9,658 |
| | Consultation | 1,860 |
| | Day Treatment | 0 |
| | Family Therapy | 1,223 |
| | Group Therapy | 2,072 |
| | Individual Therapy | 11,223 |
| | Interpretive Services | 317 |
| | Medication Management | 8,099 |
| | MST | 0 |
| | Other Outpatient Therapy | 928 |
| | Residential | 4 |
| | Respite Care | 2 |
| | Skills Training | 2,161 |
| | Supportive Day Program | 1,995 |
| Treatment Foster Care | 0 | |
| FFS | AE | 0 |
| | Alternatives to Inpatient Hosp | 2 |
| | Assertive Community Treatment | 1 |
| | Assessment & Evaluation | 96 |
| | Case Management | 150 |
| | Consultation | 106 |
| | Day Treatment | 338 |
| | Family Therapy | 26 |
| | Group Therapy | 115 |
| | Individual Therapy | 311 |
| | Interpretive Services | 0 |
| | Medication Management | 389 |
| | MST | 0 |
| | Other Outpatient Therapy | 4 |
| | Residential | 0 |
| | Respite Care | 0 |
| | Skills Training | 296 |
| | Supportive Day Program | 217 |
| Treatment Foster Care | 23 | |

¹ Unique Served: All duplicate records are removed.

² Fee-For-Service (FFS): Eligible for OHP and NOT enrolled with an MHO (Open Card)

FIGURE 8: TOTAL UNIQUE¹ MEMBERS SERVED BY DIAGNOSTIC GROUPS

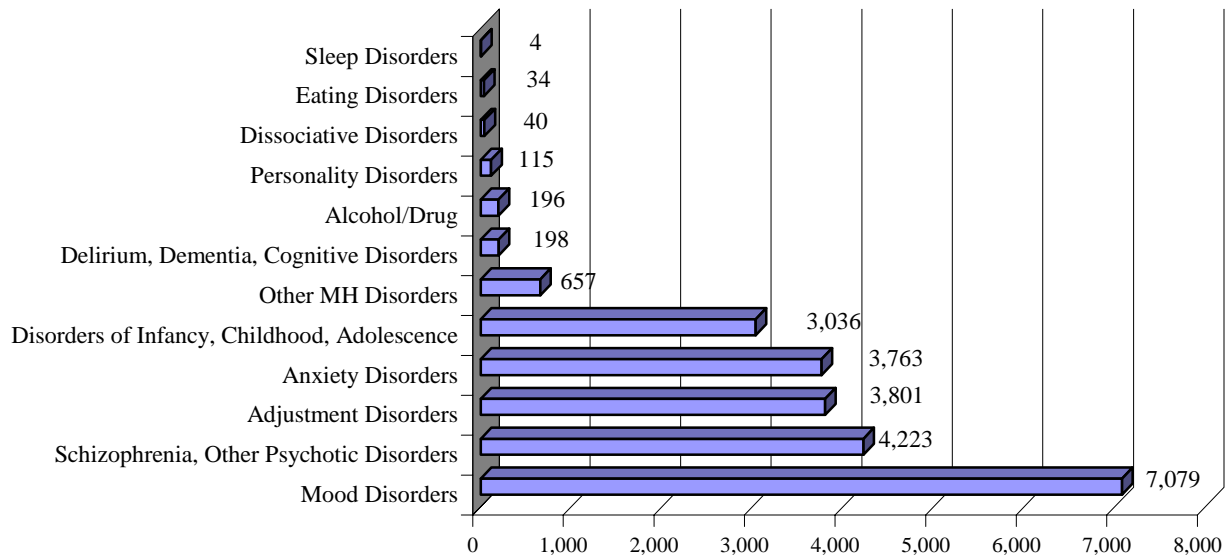


TABLE 11: UNIQUE MEMBERS SERVED BY DIAGNOSTIC GROUPS (ABHA)

| MHO Contractors | Diagnostic Group | 4 th Qtr 2004 |
|-----------------|--|--------------------------|
| ABHA* | Adjustment Disorders | 265 |
| | Alcohol/Drug | 9 |
| | Anxiety Disorders | 246 |
| | Delirium, Dementia, Cognitive Disorders | 17 |
| | Disorders of Infancy, Childhood, Adolescence | 166 |
| | Dissociative Disorders | 3 |
| | Eating Disorders | 3 |
| | Mood Disorders | 447 |
| | Other MH Disorders | 70 |
| | Personality Disorders | 7 |
| | Schizophrenia, Other Psychotic Disorders | 147 |
| | Sleep Disorders | 0 |

¹ Unique Served: All duplicate records are removed.

Data Source: DSSURS – Data Pulled: 3/1/05

* ABHA has low outpatient numbers due to problems with new encounter data submission formats, which is being corrected.

**Verity has low inpatient numbers due to problems with new encounter data submission formats, which is being corrected.

**TABLE 11: UNIQUE¹ MEMBERS SERVED BY DIAGNOSTIC GROUPS
(CLACKAMAS, FAMILYCARE & GOBHI) (Continued)**

| MHO Contractors | Diagnostic Group | 4 th Qtr 2004 |
|--|--|-----------------------------|
| Clackamas | Adjustment Disorders | 289 |
| | Alcohol/Drug | 59 |
| | Anxiety Disorders | 203 |
| | Delirium, Dementia, Cognitive Disorders | 16 |
| | Disorders of Infancy, Childhood, Adolescence | 227 |
| | Dissociative Disorders | 0 |
| | Eating Disorders | 4 |
| | Mood Disorders | 451 |
| | Other MH Disorders | 34 |
| | Personality Disorders | 13 |
| | Schizophrenia, Other Psychotic Disorders | 339 |
| | Sleep Disorders | 0 |
| | FamilyCare | Adjustment Disorders |
| Alcohol/Drug | | 19 |
| Anxiety Disorders | | 124 |
| Delirium, Dementia, Cognitive Disorders | | 1 |
| Disorders of Infancy, Childhood, Adolescence | | 91 |
| Dissociative Disorders | | 0 |
| Eating Disorders | | 2 |
| Mood Disorders | | 227 |
| Other MH Disorders | | 11 |
| Personality Disorders | | 2 |
| Schizophrenia, Other Psychotic Disorders | | 86 |
| Sleep Disorders | | 0 |
| GOBHI | | Adjustment Disorders |
| | Alcohol/Drug | 24 |
| | Anxiety Disorders | 290 |
| | Delirium, Dementia, Cognitive Disorders | 13 |
| | Disorders of Infancy, Childhood, Adolescence | 332 |
| | Dissociative Disorders | 2 |
| | Eating Disorders | 1 |
| | Mood Disorders | 583 |
| | Other MH Disorders | 200 |
| | Personality Disorders | 11 |
| | Schizophrenia, Other Psychotic Disorders | 318 |
| | Sleep Disorders | 1 |

¹ Unique Served: All duplicate records are removed.

**TABLE 11: UNIQUE¹ MEMBERS SERVED BY DIAGNOSTIC GROUPS
(JBH, LANE CARE & MVBCN)**

| MHO Contractors | Diagnostic Group | 4 th Qtr 2004 |
|--|--|-----------------------------|
| JBH | Adjustment Disorders | 173 |
| | Alcohol/Drug | 9 |
| | Anxiety Disorders | 221 |
| | Delirium, Dementia, Cognitive Disorders | 18 |
| | Disorders of Infancy, Childhood, Adolescence | 198 |
| | Dissociative Disorders | 2 |
| | Eating Disorders | 5 |
| | Mood Disorders | 531 |
| | Other MH Disorders | 43 |
| | Personality Disorders | 13 |
| | Schizophrenia, Other Psychotic Disorders | 359 |
| | Sleep Disorders | 1 |
| | LaneCare | Adjustment Disorders |
| Alcohol/Drug | | 5 |
| Anxiety Disorders | | 766 |
| Delirium, Dementia, Cognitive Disorders | | 2 |
| Disorders of Infancy, Childhood, Adolescence | | 471 |
| Dissociative Disorders | | 7 |
| Eating Disorders | | 2 |
| Mood Disorders | | 1030 |
| Other MH Disorders | | 40 |
| Personality Disorders | | 5 |
| Schizophrenia, Other Psychotic Disorders | | 518 |
| Sleep Disorders | | 0 |
| MVBCN | | Adjustment Disorders |
| | Alcohol/Drug | 10 |
| | Anxiety Disorders | 863 |
| | Delirium, Dementia, Cognitive Disorders | 88 |
| | Disorders of Infancy, Childhood, Adolescence | 712 |
| | Dissociative Disorders | 18 |
| | Eating Disorders | 13 |
| | Mood Disorders | 1655 |
| | Other MH Disorders | 121 |
| | Personality Disorders | 45 |
| | Schizophrenia, Other Psychotic Disorders | 918 |
| | Sleep Disorders | 1 |

¹ Unique Served: All duplicate records are removed.

**TABLE 11: UNIQUE¹ MEMBERS SERVED BY DIAGNOSTIC GROUPS
(VERITY** & WASHINGTON)**

| MHO Contractors | Diagnostic Group | 4 th Qtr 2004 |
|--|--|-----------------------------|
| Verity** | Adjustment Disorders | 737 |
| | Alcohol/Drug | 61 |
| | Anxiety Disorders | 839 |
| | Delirium, Dementia, Cognitive Disorders | 34 |
| | Disorders of Infancy, Childhood, Adolescence | 694 |
| | Dissociative Disorders | 8 |
| | Eating Disorders | 4 |
| | Mood Disorders | 1740 |
| | Other MH Disorders | 136 |
| | Personality Disorders | 18 |
| | Schizophrenia, Other Psychotic Disorders | 1271 |
| | Sleep Disorders | 0 |
| | Washington | Adjustment Disorders |
| Alcohol/Drug | | |
| Anxiety Disorders | | 211 |
| Delirium, Dementia, Cognitive Disorders | | 9 |
| Disorders of Infancy, Childhood, Adolescence | | 145 |
| Dissociative Disorders | | 0 |
| Eating Disorders | | 0 |
| Mood Disorders | | 415 |
| Other MH Disorders | | 2 |
| Personality Disorders | | 1 |
| Schizophrenia, Other Psychotic Disorders | | 267 |
| Sleep Disorders | | 1 |

¹ Unique Served: All duplicate records are removed.

Data Source: DSSURS – Data Pulled: 3/1/05

* ABHA has low outpatient numbers due to problems with new encounter data submission formats, which is being corrected.

**Verity has low inpatient numbers due to problems with new encounter data submission formats, which is being corrected.

**TABLE 11: UNIQUE¹ MEMBERS SERVED BY DIAGNOSTIC GROUPS
(TOTAL SERVED & FFS²)**

| MHO Contractors | Diagnostic Group | 4 th Qtr 2004 | |
|--|--|-----------------------------|-----|
| Total Served | Adjustment Disorders | 3,801 | |
| | Alcohol/Drug | 196 | |
| | Anxiety Disorders | 3,763 | |
| | Delirium, Dementia, Cognitive Disorders | 198 | |
| | Disorders of Infancy, Childhood, Adolescence | 3,036 | |
| | Dissociative Disorders | 40 | |
| | Eating Disorders | 34 | |
| | Mood Disorders | 7,079 | |
| | Other MH Disorders | 657 | |
| | Personality Disorders | 115 | |
| | Schizophrenia, Other Psychotic Disorders | 4,223 | |
| | Sleep Disorders | 4 | |
| | FFS | Adjustment Disorders | 104 |
| | | Alcohol/Drug | 13 |
| Anxiety Disorders | | 150 | |
| Delirium, Dementia, Cognitive Disorders | | 7 | |
| Disorders of Infancy, Childhood, Adolescence | | 250 | |
| Dissociative Disorders | | 1 | |
| Eating Disorders | | 0 | |
| Mood Disorders | | 231 | |
| Other MH Disorders | | 12 | |
| Personality Disorders | | 0 | |
| Schizophrenia, Other Psychotic Disorders | | 384 | |
| Sleep Disorders | | 0 | |

¹ Unique Served: All duplicate records are removed.

² Fee-For-Service (FFS): Eligible for OHP and NOT enrolled with an MHO (Open Card)

Hospital Data

TABLE 12: UNIQUE¹ HOSPITAL ADMISSIONS PER 1,000 MEMBERS²

| MHO Contractors | 4th Qtr |
|------------------------|---------------------------|
| ABHA* | 1.17 |
| Clackamas | 1.17 |
| FamilyCare | 1.50 |
| GOBHI | 0.09 |
| JBH | 1.20 |
| LaneCare | 1.80 |
| MVBCN | 0.66 |
| THA** | 0.00 |
| Verity*** | 0.00 |
| Washington | 2.01 |
| Quarterly Total | 0.91 |

TABLE 13: UNIQUE HOSPITAL ADMISSIONS BY AGE GROUPS PER 1,000 MEMBERS

| MHO Contractors | Age Group | 4th Qtr 2004 |
|------------------------|------------------|------------------------------------|
| ABHA* | 0-17 | 0.47 |
| | 18-64 | 2.28 |
| | 65+ | 0.00 |
| Clackamas | 0-17 | 0.54 |
| | 18-64 | 2.25 |
| | 65+ | 0.52 |
| FamilyCare | 0-17 | 0.44 |
| | 18-64 | 2.74 |
| | 65+ | 0.00 |
| GOBHI | 0-17 | 0.00 |
| | 18-64 | 0.25 |
| | 65+ | 0.00 |
| JBH | 0-17 | 0.75 |
| | 18-64 | 1.93 |
| | 65+ | 0.00 |
| LaneCare | 0-17 | 0.21 |
| | 18-64 | 3.60 |
| | 65+ | 1.62 |

¹ Unique: All duplicated records are removed.

² Per 1,000 members is the number enrolled divided by 1,000

TABLE 14: UNIQUE¹ HOSPITAL ADMISSIONS BY AGE GROUPS PER 1,000 MEMBERS²

| MHO Contractors | Age Group | 4 th Qtr |
|-----------------|-----------|---------------------|
| MVBCN | 0-17 | 0.14 |
| | 18-64 | 1.54 |
| | 65+ | 0.24 |
| Verity** | 0-17 | 0.00 |
| | 18-64 | 0.00 |
| | 65+ | 0.00 |
| Washington | 0-17 | 0.65 |
| | 18-64 | 4.80 |
| | 65+ | 0.44 |
| Total | 0-17 | 0.32 |
| | 18-64 | 1.80 |
| | 65+ | 0.24 |

TABLE 15: TOTAL UNIQUE HOSPITAL DAYS PER 1,000 MEMBERS

| MHO Contractors | 4 th Qtr 2004 |
|-----------------|-----------------------------|
| ABHA* | 6.3 |
| Clackamas | 10.9 |
| FamilyCare | 13.1 |
| GOBHI | 0.3 |
| JBH | 8.2 |
| LaneCare | 14.2 |
| MVBCN | 7.8 |
| Verity** | 0.0 |
| Washington | 13.1 |
| Total | 7.1 |

¹ Unique: All duplicated records are removed

² Per 1,000 members is the number enrolled divided by 1,000

TABLE 16: TOTAL UNIQUE¹ HOSPITAL DAYS BY AGE GROUP PER 1,000 MEMBERS²

| MHO Contractors | Age Groups | 4 th Qtr |
|-----------------|------------|---------------------|
| ABHA* | 0-17 | 1.9 |
| | 18-64 | 13.0 |
| | 65+ | 0.0 |
| Clackamas | 0-17 | 5.3 |
| | 18-64 | 20.6 |
| | 65+ | 5.2 |
| FamilyCare | 0-17 | 7.2 |
| | 18-64 | 20.3 |
| | 65+ | 0.0 |
| GOBHI | 0-17 | 0.0 |
| | 18-64 | 0.7 |
| | 65+ | 0.0 |
| JBH | 0-17 | 6.5 |
| | 18-64 | 11.5 |
| | 65+ | 0.0 |
| LaneCare | 0-17 | 0.9 |
| | 18-64 | 29.4 |
| | 65+ | 12.4 |
| MVBCN | 0-17 | 1.5 |
| | 18-64 | 18.8 |
| | 65+ | 1.0 |
| Verity** | 0-17 | 0.0 |
| | 18-64 | 0.0 |
| | 65+ | 0.0 |
| Washington | 0-17 | 6.1 |
| | 18-64 | 28.1 |
| | 65+ | 2.2 |
| Totals | 0-17 | 2.8 |
| | 18-64 | 13.7 |
| | 65+ | 1.7 |

¹ Unique: All duplicated records are removed

² Per 1,000 members is the number enrolled divided by 1,000

TABLE 17: PERCENT OF HOSPITAL RE-ADMISSION WITHIN 30 DAYS

| MHO Contractors | 4th Qtr 2004 |
|------------------------|------------------------------------|
| ABHA* | 18.2% |
| Clackamas | 12.9% |
| FamilyCare | 5.0% |
| GOBHI | 0.0% |
| JBH | 12.0% |
| LaneCare | 11.9% |
| MVBCN | 14.6% |
| Verity** | 0.0% |
| Washington | 13.4% |
| Total | 12.8% |

TABLE 18: TOTAL HOSPITAL RE-ADMISSION WITHIN 180 DAYS

This table is not included in this quarterly report due to the 180-day lag in data submission.

The 4th quarter of 2004, re-admission within 180 days will be reflected in the next quarterly report (January 2005 through March 2005), which will be finalized in the first part of May 2005.

FIGURE 9: ENROLLED MEMBERS SEEN WITHIN 7 DAYS OF DISCHARGE: BY MONTH *(percentage based on total members seen after hospital discharge.)*

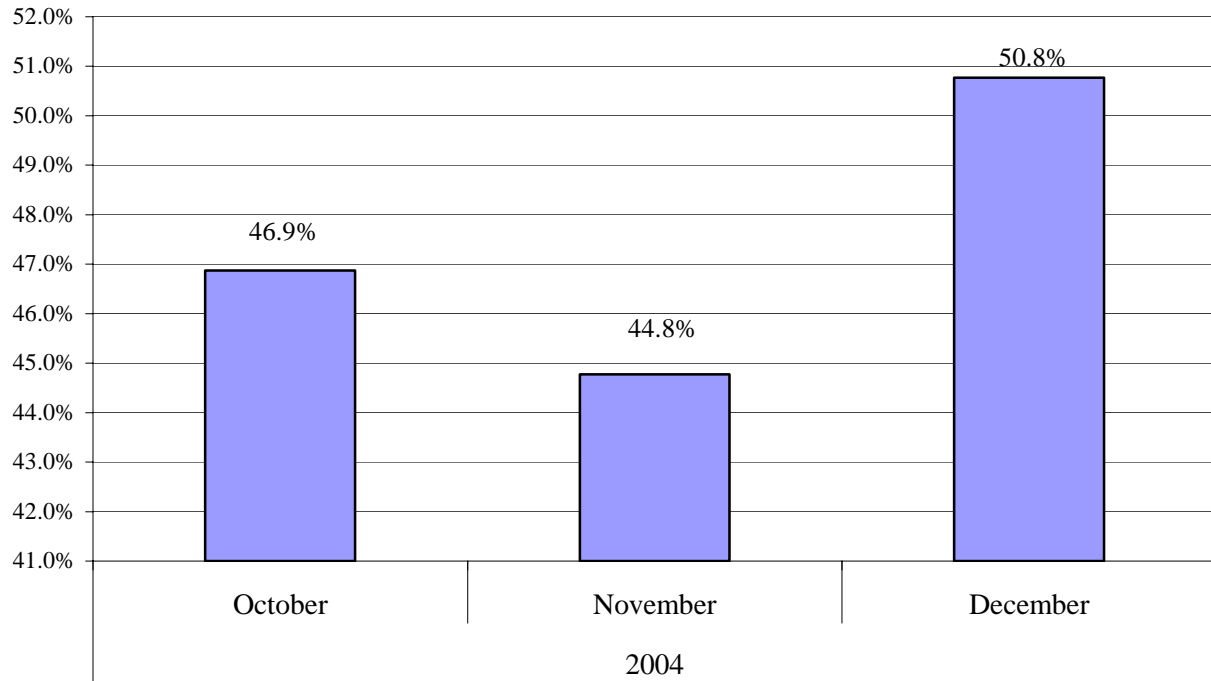


TABLE 21: ENROLLED MEMBERS SEEN WITHIN 7 DAYS OF DISCHARGE: BY MHO

| MHO Contractors | 4 th Qtr 2004 |
|-----------------|--------------------------|
| ABHA* | 51.6% |
| Clackamas | 40.0% |
| FamilyCare | 25.0% |
| GOBHI | 34.8% |
| JBH | 36.8% |
| LaneCare | 53.5% |
| MVBCN | 61.2% |
| Verity** | 20.0% |
| Washington | 54.2% |
| Total | 47.4% |

Data Source: DSSURS – Data Pulled: 3/1/05

* ABHA has low outpatient numbers due to problems with new encounter data submission formats, which is being corrected.

**Verity has low inpatient numbers due to problems with new encounter data submission formats, which is being corrected.

MHO UTILIZATION REPORT GLOSSARY

DIAGNOSIS CATEGORY:

Diagnosis categories are defined by the grouping of diagnoses in the most recent version of the American Psychiatric Association's Diagnostic and Statistical Manual (DSM).

ELIGIBLE:

An individual eligible for services under the OHP, but may not be enrolled into an MHO. Includes enrolled and fee-for-service.

ENROLLED (ENROLLEE):

Eligible for the Oregon Health Plan (OHP) and enrolled in an MHO.

FEE-FOR-SERVICE (FFS):

Individuals who are eligible for the OHP, but are not enrolled with an MHO. This is also known as fee-for-service (FFS) or an "open card".

MENTAL HEALTH ORGANIZATION (MHO):

A Prepaid Health Plan under contract with DHS to provide Covered Services under the OHP Medicaid Demonstration Project and State Children's Health Insurance Program (SCHIP). MHOs can be FCHPs, CMHPs, or private MHOs or combinations thereof.

OFFICE OF MENTAL HEALTH AND ADDICTION SERVICES (OMHAS):

The program office of DHS responsible for the administration of mental health services for the State of Oregon.

OREGON HEALTH PLAN (OHP):

Oregon's health care reform effort consisting of a Medicaid Demonstration Project, State Children's Health Insurance Program, an individual insurance program for persons excluded from health insurance coverage due to pre-existing health conditions, and a group insurance program for small businesses. One objective of this reform effort includes universal coverage for Oregonians. In the context of this report, OHP refers to all individuals on FFS.

PERCENT ENROLLEES SERVED:

This is a general measure of access, but more related to utilization of services. It is a percentage calculated by summing the unique enrollees seen during a given time period and dividing that number by the total enrollees for that time period. For example, if there is 10,000 enrollees statewide in a given month and during that same month 500 of those enrollees receive services, the percent of enrollees served is 5%.

SERVICE CATEGORY:

Service category is a descriptive grouping of service codes (BA, ECC, and CPT) that are similar procedurally. See Appendix A as a reference for service code categorization.

ENROLLMENT NUMBERS PER MONTH

| MHO Contractor | Oct-04 | Nov-04 | Dec-04 |
|----------------|---------|---------|---------|
| ABHA | 24,492 | 24,460 | 24,249 |
| Clackamas | 22,992 | 22,890 | 22,898 |
| FamilyCare | 11,107 | 10,793 | 10,759 |
| GOBHI | 27,977 | 27,656 | 27,488 |
| JBH | 60,946 | 60,386 | 60,267 |
| LaneCare | 33,029 | 32,820 | 32,687 |
| MVBCN | 64,587 | 63,793 | 64,157 |
| THA | 68,357 | 67,845 | 67,626 |
| Verity | 0 | 0 | 0 |
| Washington | 24,861 | 28,971 | 29,005 |
| Monthly Totals | 338,348 | 339,614 | 339,136 |

| | | | |
|-----------------------------|-------|--------|---------|
| % Monthly Increase/Decrease | 0.37% | -0.14% | 0.23% |
| | | | Overall |

| | | | |
|-----------|---------|---------|---------|
| Eligibles | 432,650 | 428,164 | 424,720 |
| FFS | 97,688 | 92,036 | 85,584 |

NOTE: October and November FFS numbers are from DSSURS count. December data was not available. The December FFS is Dec Eligibles minus Enrolled.

UNIQUE MEMBERS SERVED PER MONTH

| MHO Contractors | Oct-04 | Nov-04 | Dec-04 |
|-----------------|---------------|---------------|---------------|
| ABHA | 837 | 898 | 887 |
| Clackamas | 1,015 | 1,052 | 979 |
| FamilyCare | 420 | 398 | 314 |
| GOBHI | 1,288 | 1,255 | 1,000 |
| JBH | 1,307 | 481 | 429 |
| LaneCare | 2,478 | 2,543 | 2,473 |
| MVBCN | 3,546 | 3,649 | 3,686 |
| THA | 0 | 0 | 0 |
| Verity | 4,593 | 3,502 | 249 |
| Washington | 748 | 786 | 723 |
| FFS | 829 | 861 | 699 |
| Total | 17,061 | 15,425 | 11,439 |