

Department of Human Services
Office of Mental Health and Addiction Services

MHO Utilization Quarterly Report

October 2004 through March 2005



Report Produced by
Program Analysis and Evaluation Team
JULY 2005

EXECUTIVE SUMMARY
REPORT ON OREGON HEALTH PLAN (OHP)
UTILIZATION AND ENROLLMENT FOR
MENTAL HEALTH SERVICES:
OCTOBER 2004 THROUGH MARCH 2005

The following is a summary of the Mental Health Organization (MHO) Utilization Quarterly Report for the period of October 2004 through March 2005. This report contains enrollment, unique served and hospitalization data, which is the beginning of the contract year 2004-05 for the MHO's. The data for this report were pulled June 16, 2005. All information came from the Office of Medical Assistance Programs' (OMAP) Decision Support/Surveillance and Utilization Review System (DSSURS). There is a 180-day lag in encounter data submissions; this is reflected in the Hospital Data. **Any conclusions drawn from the information should consider lag in data submission into account.**

Previous MHO Utilization Report calculations were based on the total number of records within a specific quarter and divided by three (3) for a monthly average by quarter. However, in this report calculations are based on the total number of unique members for each of the quarters. The diagnosis and service categories within the Unique Served and the Hospital data will be based on the number of unique encounters per quarter.

ENROLLMENT DATA

- ❖ Enrollment for all MHO's during October and November 2004 indicated a slight increase of 0.33%. For the remainder of this reporting period, October 2004 through March 2005, enrollment decreased by 1.20%

UNIQUE SERVED DATA

- ❖ The number of served shows an overall decline of 31.4%. As with the Enrolled numbers, during the month of October and November 2004 there was an increase of 6.31%. It is important to remember the lag in data submission will show low numbers in the 1st quarter of 2005.

TABLE OF CONTENTS

The format and contents are constructed as follows:

- Figures are used to illustrate trends in statewide data.
- Tables are used to summarize quarterly data at the MHO level. Some tables include FFS and All Eligibles.



Executive Summary	i
Figure 1: Enrolled by MHO	1
Table 1: Enrolled by MHO	1
Table 2: Enrolled by Gender: Actual Count by Quarter	2
Figure 2: Enrolled Children (0-17) And Adults (18+).....	3
Table 3: Enrolled Children (0-17) and Adults (18+).....	3
Figure 3: Total Enrolled by Age Groups.....	4
Table 4: Enrolled by Age Groups	4
Figure 4: Percentage of Total Enrolled by Ethnicity	6
Table 5: Enrolled by Ethnicity.....	6
Figure 4: Unique Members Served	10
Table 6: Unique Members Served with Penetration Rate.....	10
Table 7: Unique Members Served by Gender with Penetration Rate	11
Figure 5: Unique Members Served Children (0-17) & Adults (18+).....	12
Table 8: Unique Members Served Children (0-17) and Adults (18+)	12
Table 9: Unique Members Served by Age Group with Penetration Rate.....	13
Figure 6: Percentage of Total Unique Members Served by Ethnicity	13
Table 10: Unique Members Served by Ethnicity with Penetration Rate.....	14
Figure 7: Total Unique Encounters by Service Categories	18
Table 11: Unique Encounters by Service Categories (ABHA)	18
Clackamas & FamilyCare.....	19

Table 11: Unique Encounters by Service Categories <i>(continued)</i>	
GOBHI & JBH	20
LaneCare & MVBCN	21
Verity & Washington	22
Total Served & Fee-For-Service	23
Figure 8: Total Unique Encounters by Diagnostic Groups	24
Table 12: Unique Encounters by Diagnostic Groups	
ABHA	24
Clackamas & FamilyCare	25
GOBHI & JBH	26
LaneCare & MVBCN	27
Verity & Washington	28
Total Encounters & FFS	29
Table 13: Unique Hospital Admissions per 1,000 Members	30
Table 14: Unique Hospital Admissions by Age Groups per 1,000 Members	30
Table 15: Total Unique Hospital Days per 1,000 Members	31
Table 16: Total Unique Hospital Days by Age Group per 1,000 Members	32
Table 17: Percent of Hospital Re-Admission within 30 days	33
Table 18: Total Hospital Re-Admission within 180 days	33
Figure 9: Enrolled Members Seen within 7 Days of Discharge	34
Table 19: Enrolled Members Seen within 7 Days of Discharge	34
MHO Utilization Report Glossary	30
Enrollment Numbers per Month	32
Unique Members Served per Month	33



Enrollment Data

- ❖ Enrolled: Eligible for OHP and enrolled in an MHO
- ❖ Eligibles: Both Enrolled and FFS
- ❖ Fee-For-Service (FFS): Eligible for OHP and NOT enrolled with an MHO (Open Card)

FIGURE 1: ENROLLED¹: ACTUAL COUNT BY QUARTER

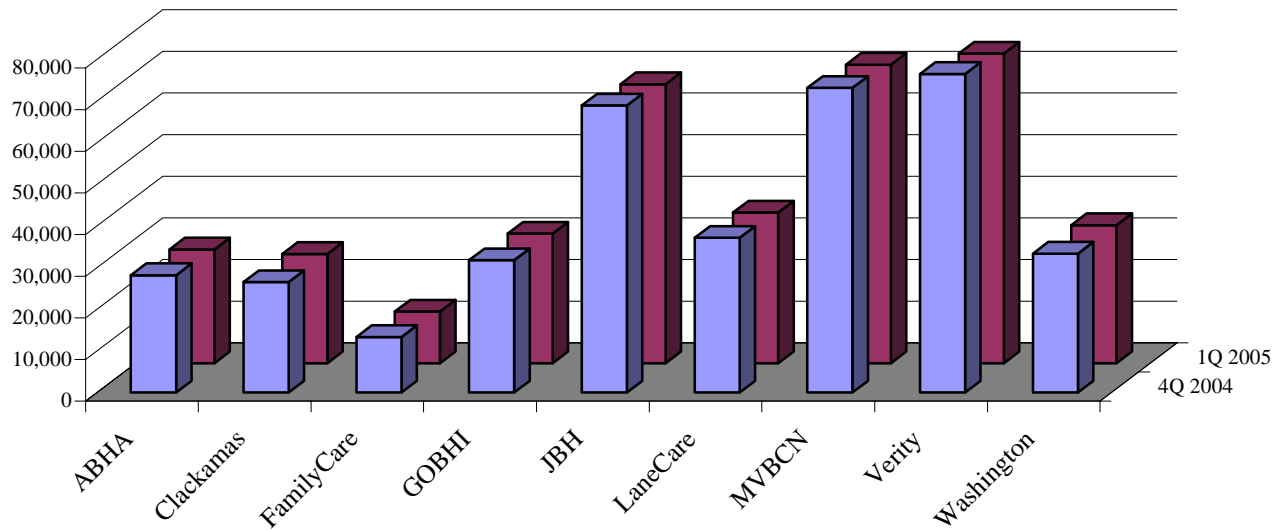


TABLE 1: ENROLLED BY MHO: ACTUAL COUNT BY QUARTER

MHO Contractors	4 th Qtr 2004	% Enrolled	1 st Qtr 2005	% Enrolled
ABHA	28,171	6.6%	27,320	6.5%
Clackamas	26,532	6.2%	26,217	6.2%
FamilyCare	13,328	3.1%	12,431	2.9%
GOBHI	31,762	7.4%	31,110	7.4%
JBH	68,896	16.1%	66,986	15.8%
LaneCare	37,137	8.7%	36,198	8.6%
MVBCN	73,131	17.1%	71,674	16.9%
Verity	76,458	17.8%	74,324	17.6%
Washington	33,339	7.8%	33,145	7.8%
Total Enrolled	388,754	90.6%	379,405	89.6%
All Eligibles ²	428,916	100.0%	423,246	100.0%
Fee-For-Service (FFS) ³	153,447	35.8%	143,147	33.8%

¹ Enrolled: Eligible for OHP and enrolled in an MHO

² Eligibles: Both Enrolled and FFS

³ Fee-For-Service (FFS): Eligible for OHP and NOT enrolled with an MHO (Open Card)

TABLE 2: ENROLLED¹ BY GENDER: ACTUAL COUNT BY QUARTER

MHO Contractors	Gender	4 th Qtr 2004	1 st Qtr 2005
ABHA	F	16,016	15,590
	M	12,155	11,730
Clackamas	F	15,110	14,948
	M	11,422	11,269
FamilyCare	F	7,394	6,974
	M	5,934	5,457
GOBHI	F	18,099	17,751
	M	13,663	13,359
JBH	F	39,275	38,391
	M	29,621	28,595
LaneCare	F	21,333	20,880
	M	15,804	15,318
MVBCN	F	41,116	40,518
	M	32,015	31,156
Verity	F	42,582	41,451
	M	33,876	32,873
Washington	F	18,754	18,732
	M	14,585	14,413
Total by Quarter	F	219,679	215,235
	M	169,075	164,170
All Eligibles ²	F	263,066	259,217
	M	197,366	192,265
Fee-For-Service ³ (FFS)	F	138,536	128,402
	M	81,084	72,976

¹ Enrolled: Eligible for OHP and enrolled in an MHO

² Eligibles: Both Enrolled and FFS

³ Fee-For-Service (FFS): Eligible for OHP and NOT enrolled with an MHO (Open Card)

FIGURE 2: ENROLLED¹ CHILDREN (0-17) AND ADULTS (18+): ACTUAL COUNT BY QUARTER

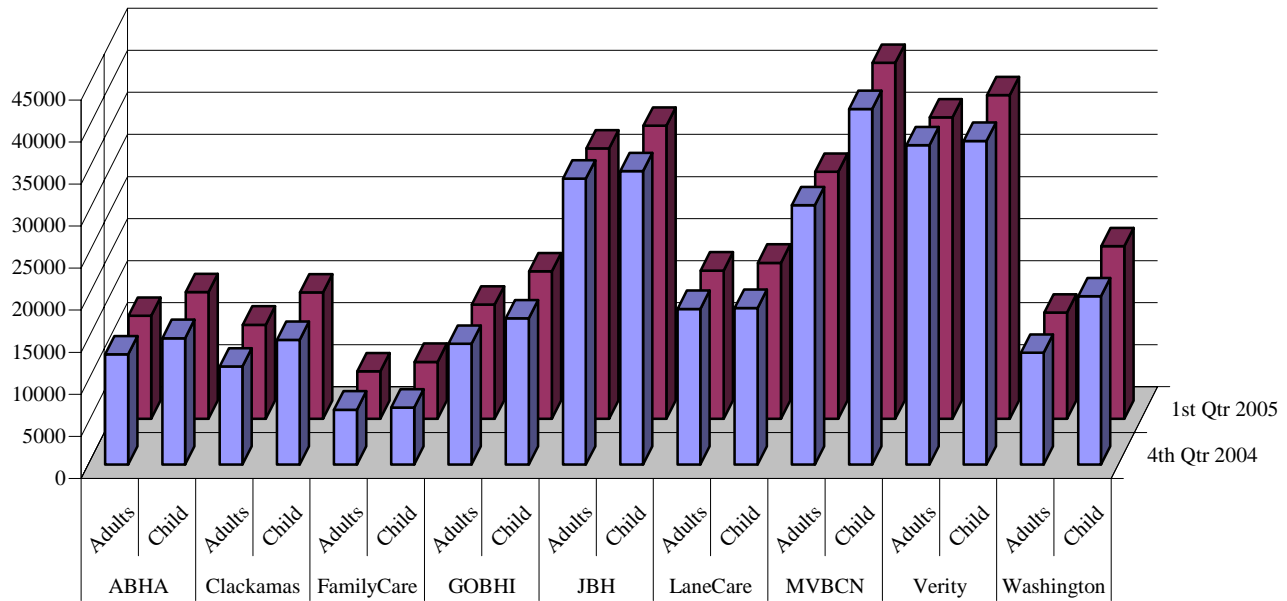


TABLE 3: ENROLLED CHILDREN (0-17) AND ADULTS (18+): ACTUAL COUNT BY QUARTER

MHO Contractors	Age Categories	4 th Qtr 2004	% By MHO Qtr Total	1 st Qtr 2005	% By MHO Qtr Total
ABHA	Adults	13,125	46.6%	12,241	44.8%
	Child	15,046	53.4%	15,079	55.2%
Clackamas	Adults	11,685	44.0%	11,201	42.7%
	Child	14,847	56.0%	15,016	57.3%
FamilyCare	Adults	6,542	49.1%	5,651	45.5%
	Child	6,786	50.9%	6,780	54.5%
GOBHI	Adults	14,379	45.3%	13,567	43.6%
	Child	17,383	54.7%	17,543	56.4%
JBH	Adults	34,006	49.4%	32,142	48.0%
	Child	34,890	50.6%	34,844	52.0%
LaneCare	Adults	18,511	49.8%	17,642	48.7%
	Child	18,626	50.2%	18,556	51.3%
MVBCN	Adults	30,863	42.2%	29,351	41.0%
	Child	42,268	57.8%	42,323	59.0%
Verity	Adults	37,967	49.7%	35,861	48.2%
	Child	38,491	50.3%	38,463	51.8%
Washington	Adults	13,323	40.0%	12,618	38.1%
	Child	20,016	60.0%	20,527	61.9%

¹ Enrolled: Eligible for OHP and enrolled in an MHO

FIGURE 3: TOTAL ENROLLED BY AGE GROUPS

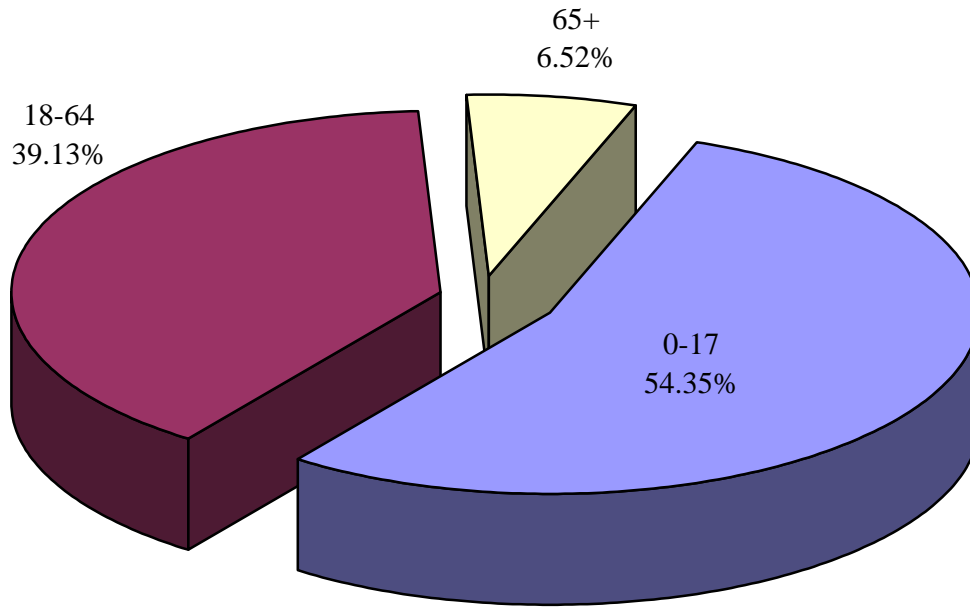


TABLE 4: Enrolled¹ by Age Groups: Actual Count by Quarter

MHO Contractors	Age Groups	4 th Qtr 2004	% by MHO Qtr Total	1 st Qtr 2005	% by MHO Qtr Total
ABHA	0-17	15,046	53.4%	15,079	55.2%
	18-64	11,425	40.6%	10,561	38.7%
	65 +	1,700	6.0%	1,680	6.1%
Clackamas	0-17	14,847	56.0%	15,016	57.3%
	18-64	9,759	36.8%	9,278	35.4%
	65 +	1,926	7.3%	1,923	7.3%
FamilyCare	0-17	6,786	50.9%	6,780	54.5%
	18-64	6,214	46.6%	5,321	42.8%
	65 +	328	2.5%	330	2.7%
GOBHI	0-17	17,383	54.7%	17,543	56.4%
	18-64	12,171	38.3%	11,380	36.6%
	65 +	2,208	7.0%	2,187	7.0%
JBH	0-17	34,890	50.6%	34,844	52.0%
	18-64	29,553	42.9%	27,693	41.3%
	65 +	4,453	6.5%	4,449	6.6%

¹ Enrolled: Eligible for OHP and enrolled in an MHO

TABLE 4: Enrolled¹ by Age Groups: Actual Count by Quarter (continued)

MHO Contractors	Age Groups	4 th Qtr 2004	% by MHO Qtr Total	1 st Qtr 2005	% by MHO Qtr Total
LaneCare	0-17	18,626	50.2%	18,556	51.3%
	18-64	16,656	44.9%	15,775	43.6%
	65 +	1,855	5.0%	1,867	5.2%
MVBCN	0-17	42,268	57.8%	42,323	59.0%
	18-64	26,655	36.4%	25,157	35.1%
	65 +	4,208	5.8%	4,194	5.9%
Verity	0-17	38,491	50.3%	38,463	51.8%
	18-64	31,861	41.7%	29,749	40.0%
	65 +	6,106	8.0%	6,112	8.2%
Washington	0-17	20,016	60.0%	20,527	61.9%
	18-64	11,053	33.2%	10,301	31.1%
	65 +	2,270	6.8%	2,317	7.0%
Total by Quarter	0-17	208,353	53.6%	209,131	55.1%
	18-64	155,347	40.0%	145,215	38.3%
	65 +	25,054	6.4%	25,059	6.6%

Note: All Eligibles and FFS data does not have accurate recipient date of birth and is not included in this specific data table.

¹ Enrolled: Eligible for OHP and enrolled in an MHO

FIGURE 4: PERCENTAGE OF TOTAL ENROLLED¹ BY ETHNICITY

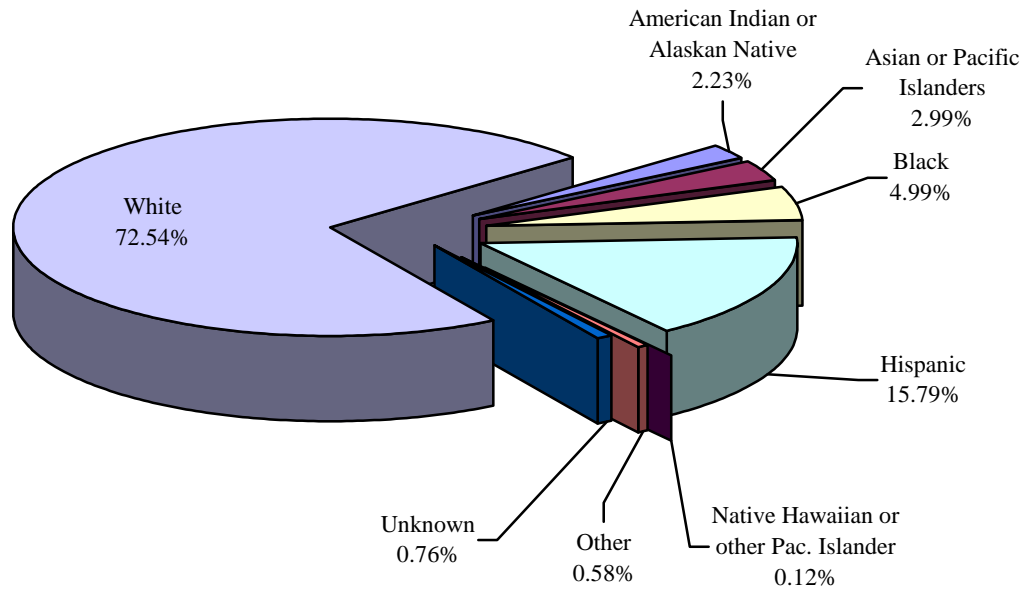


TABLE 5: ENROLLED BY ETHNICITY: ACTUAL COUNT BY QUARTER

MHO Contractors	Ethnicity	4 th Qtr 2004	% by MHO Qtr Total	1 st Qtr 2005	% by MHO Qtr Total
ABHA	American Indian or Alaskan Native	1,333	4.7%	1,199	4.4%
	Asian or Pacific Islanders	234	0.8%	228	0.8%
	Black	264	0.9%	248	0.9%
	Hispanic	2,788	9.9%	2,850	10.4%
	Native Hawaiian or other Pac. Islander	22	0.1%	23	0.1%
	Other	138	0.5%	133	0.5%
	Unknown	172	0.6%	179	0.7%
	White	23,220	82.4%	22,460	82.2%
Clackamas	American Indian or Alaskan Native	392	1.5%	391	1.5%
	Asian or Pacific Islanders	476	1.8%	493	1.9%
	Black	483	1.8%	502	1.9%
	Hispanic	4,624	17.4%	4,684	17.9%
	Native Hawaiian or other Pac. Islander	23	0.1%	32	0.1%
	Other	147	0.6%	141	0.5%
	Unknown	171	0.6%	176	0.7%
	White	20,216	76.2%	19,798	75.5%

¹ Enrolled: Eligible for OHP and enrolled in an MHO

TABLE 5: ENROLLED¹ BY ETHNICITY: ACTUAL COUNT BY QUARTER (Continued)

MHO Contractors	Ethnicity	4 th Qtr 2004	% of MHO Qtr Total	1 st Qtr 2005	% of MHO Qtr Total
FamilyCare	American Indian or Alaskan Native	192	1.4%	183	1.5%
	Asian or Pacific Islanders	764	5.7%	710	5.7%
	Black	1,564	11.7%	1,361	10.9%
	Hispanic	1,310	9.8%	1,348	10.8%
	Native Hawaiian or other Pac. Islander	9	0.1%	18	0.1%
	Other	118	0.9%	107	0.9%
	Unknown	55	0.4%	58	0.5%
	White	9,316	69.9%	8,646	69.6%
GOBHI	American Indian or Alaskan Native	796	2.5%	789	2.5%
	Asian or Pacific Islanders	188	0.6%	187	0.6%
	Black	325	1.0%	290	0.9%
	Hispanic	6,097	19.2%	6,199	19.9%
	Native Hawaiian or other Pac. Islander	21	0.1%	20	0.1%
	Other	135	0.4%	122	0.4%
	Unknown	251	0.8%	243	0.8%
	White	23,949	75.4%	23,260	74.8%
JBH	American Indian or Alaskan Native	2,114	3.1%	2,095	3.1%
	Asian or Pacific Islanders	354	0.5%	324	0.5%
	Black	665	1.0%	682	1.0%
	Hispanic	5,309	7.7%	5,339	8.0%
	Native Hawaiian or other Pac. Islander	70	0.1%	73	0.1%
	Other	250	0.4%	250	0.4%
	Unknown	574	0.8%	607	0.9%
	White	59,560	86.4%	57,616	86.0%
LaneCare	American Indian or Alaskan Native	705	1.9%	702	1.9%
	Asian or Pacific Islanders	519	1.4%	502	1.4%
	Black	895	2.4%	871	2.4%
	Hispanic	2,695	7.3%	2,724	7.5%
	Native Hawaiian or other Pac. Islander	31	0.1%	28	0.1%
	Other	208	0.6%	188	0.5%
	Unknown	391	1.1%	413	1.1%
	White	31,693	85.3%	30,770	85.0%

¹ Enrolled: Eligible for OHP and enrolled in an MHO

TABLE 5: ENROLLED¹ BY ETHNICITY: ACTUAL COUNT BY QUARTER (Continued)

MHO Contractors	Ethnicity	4 th Qtr 2004	% of MHO Qtr Total	1 st Qtr 2005	% of MHO Qtr Total
MVBCN	American Indian or Alaskan Native	1,408	1.9%	1,199	1.7%
	Asian or Pacific Islanders	950	1.3%	916	1.3%
	Black	1,034	1.4%	1,029	1.4%
	Hispanic	17,062	23.3%	16,994	23.7%
	Native Hawaiian or other Pac. Islander	142	0.2%	161	0.2%
	Other	328	0.4%	319	0.4%
	Unknown	444	0.6%	443	0.6%
	White	51,765	70.8%	50,613	70.6%
Verity	American Indian or Alaskan Native	1,583	2.1%	1,508	2.0%
	Asian or Pacific Islanders	6,113	8.0%	5,920	8.0%
	Black	12,646	16.5%	12,260	16.5%
	Hispanic	10,686	14.0%	10,721	14.4%
	Native Hawaiian or other Pac. Islander	50	0.1%	74	0.1%
	Other	641	0.8%	617	0.8%
	Unknown	499	0.7%	485	0.7%
	White	44,240	57.9%	42,739	57.5%
Washington	American Indian or Alaskan Native	290	0.9%	276	0.8%
	Asian or Pacific Islanders	2,085	6.3%	2,022	6.1%
	Black	1,619	4.9%	1,570	4.7%
	Hispanic	9,786	29.4%	10,084	30.4%
	Native Hawaiian or other Pac. Islander	43	0.1%	51	0.2%
	Other	294	0.9%	299	0.9%
	Unknown	341	1.0%	346	1.0%
	White	18,881	56.6%	18,497	55.8%

¹ Enrolled: Eligible for OHP and enrolled in an MHO

TABLE 5: ENROLLED¹ BY ETHNICITY: ACTUAL COUNT BY QUARTER (Continued)

MHO Contractors	Ethnicity	4 th Qtr 2004	% of MHO Total	1 st Qtr 2005	% of MHO Total
Totals	American Indian or Alaskan Native	8,813	2.3%	8,342	2.2%
	Asian or Pacific Islanders	11,683	3.0%	11,302	3.0%
	Black	19,495	5.0%	18,813	5.0%
	Hispanic	60,357	15.5%	60,943	16.1%
	Native Hawaiian or other Pac. Islander	411	0.1%	480	0.1%
	Other	2,259	0.6%	2,176	0.6%
	Unknown	2,898	0.7%	2,950	0.8%
	White	282,840	72.8%	274,399	72.3%
All Eligibles ²	American Indian or Alaskan Native	11,437	2.5%	10,889	2.4%
	Asian or Pacific Islanders	13,690	3.0%	13,326	3.0%
	Black	21,015	4.6%	20,502	4.5%
	Hispanic	87,657	19.0%	86,859	19.2%
	Native Hawaiian or other Pac. Islander	587	0.1%	646	0.1%
	Other	2,573	0.6%	2,524	0.6%
	Unknown	3,222	0.7%	3,345	0.7%
	White	320,251	69.6%	313,391	69.4%
Fee-For-Service ³ (FFS)	American Indian or Alaskan Native	7,920	3.6%	7,232	3.6%
	Asian or Pacific Islanders	5,284	2.4%	4,543	2.3%
	Black	8,960	4.1%	7,753	3.8%
	Hispanic	23,198	10.5%	19,971	9.9%
	Native Hawaiian or other Pac. Islander	187	0.1%	187	0.1%
	Other	960	0.4%	802	0.4%
	Unknown	2,413	1.1%	2,371	1.2%
	White	171,215	77.8%	159,019	78.8%

¹ Enrolled: Eligible for OHP and enrolled in an MHO

² Eligibles: Both Enrolled and FFS

³ Fee-For-Service (FFS): Eligible for OHP and NOT enrolled with an MHO (Open Card)

Unique Served
&
Penetration Rates
Within Specific Categories

FIGURE 4: UNIQUE¹ MEMBERS SERVED

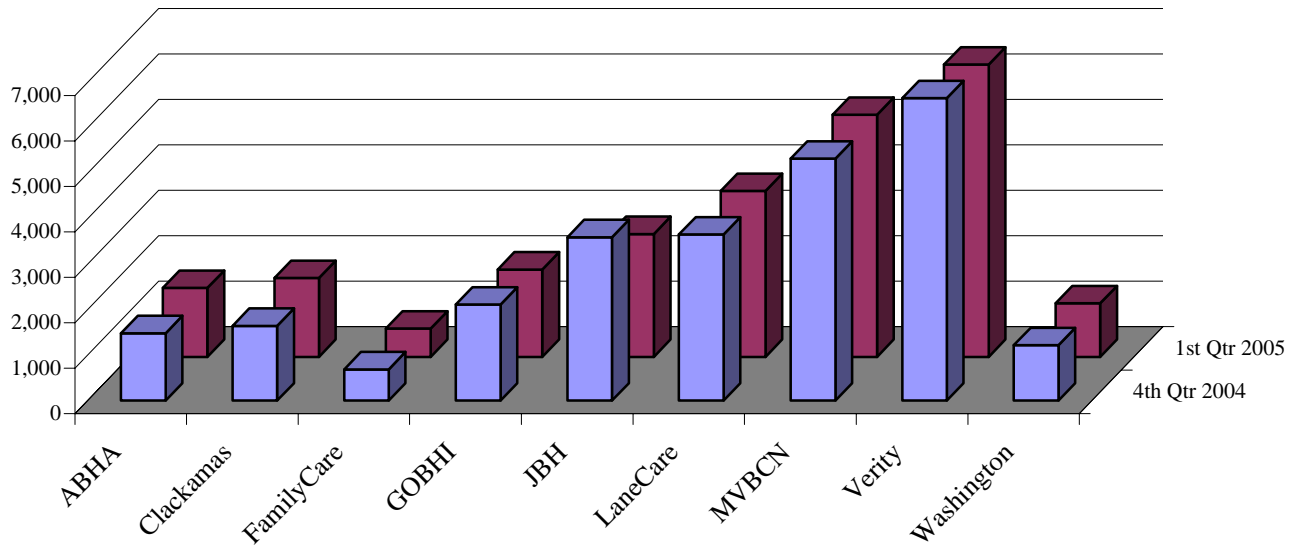


TABLE 6: UNIQUE MEMBERS SERVED WITH PENETRATION² RATE

MHO Contractors	4 th Qtr 2004	Rate	1 st Qtr 2005	Rate
ABHA	1,482	5.3%	1,519	5.6%
Clackamas	1,646	6.2%	1,737	6.6%
FamilyCare	686	5.1%	625	5.0%
GOBHI	2,113	6.7%	1,925	6.2%
JBH	3,597	5.2%	2,705	4.0%
LaneCare	3,657	9.8%	3,655	10.1%
MVBCN	5,327	7.3%	5,330	7.4%
Verity	6,657	8.7%	6,437	8.7%
Washington	1,217	3.7%	1,180	3.6%
Total Served	26,382	6.8%	25,113	6.6%
FFS	1,255	0.8%	1,482	1.0%

¹ Unique Served: All duplicated records are removed.

² Penetration Rate: Unique Served divided by Enrolled.

TABLE 7: UNIQUE¹ MEMBERS SERVED BY GENDER WITH PENETRATION² RATE

MHO Contractor	Gender	4 th Qtr 2004	Rate	1 st Qtr 2005	Rate
ABHA	F	868	5.4%	889	5.7%
	M	614	5.1%	630	5.4%
Clackamas	F	907	6.0%	978	6.5%
	M	739	6.5%	759	6.7%
FamilyCare	F	405	5.5%	378	5.4%
	M	281	4.7%	247	4.5%
GOBHI	F	1,186	6.6%	1,072	6.0%
	M	927	6.8%	853	6.4%
JBH	F	2,066	5.3%	1,556	4.1%
	M	1,531	5.2%	1,149	4.0%
LaneCare	F	2,136	10.0%	2,134	10.2%
	M	1,521	9.6%	1,521	9.9%
MVBCN	F	3,051	7.4%	3,059	7.5%
	M	2,276	7.1%	2,271	7.3%
Verity	F	3,704	8.7%	3,565	8.6%
	M	2,953	8.7%	2,872	8.7%
Washington	F	695	3.7%	699	3.7%
	M	522	3.6%	481	3.3%
Total Served	F	15,018	6.8%	14,330	6.7%
	M	11,364	6.7%	10,783	6.6%
Fee-For-Service (FFS)	F	539	0.4%	654	0.5%
	M	716	0.9%	828	1.1%

¹ Unique Served: All duplicate records are removed.

² Penetration Rate: Unique Served divided by Enrolled

FIGURE 5: UNIQUE¹ MEMBERS SERVED CHILDREN (0-17) & ADULTS (18+)

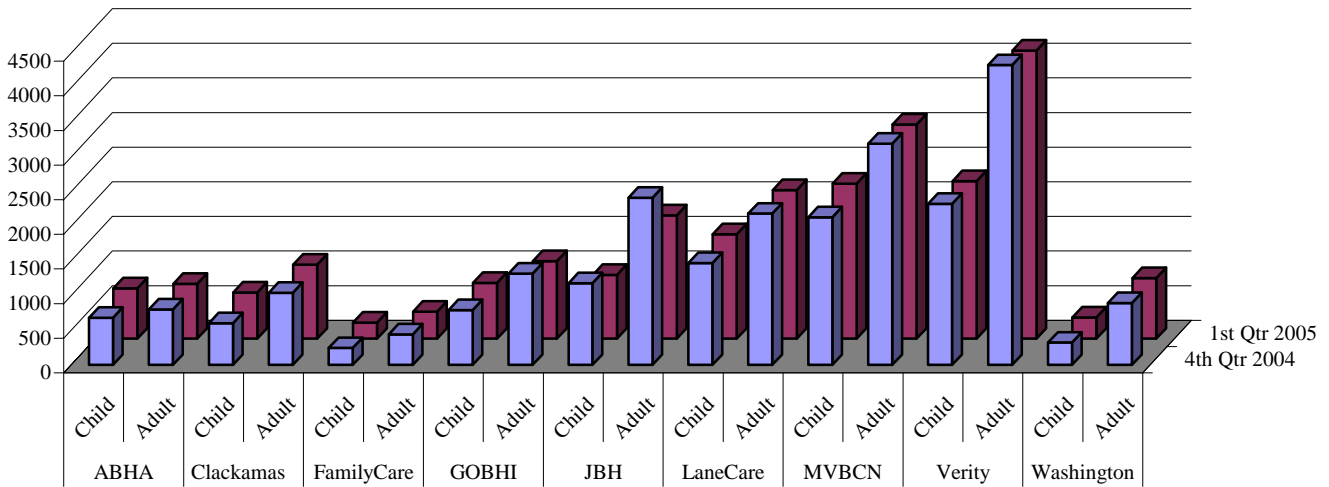


TABLE 8: UNIQUE MEMBERS SERVED CHILDREN (0-17) AND ADULTS (18+)

MHO Contractors	Age Groups	4 th Qtr 2004	% of MHO Qtr Total	1 st Qtr 2005	% of MHO Qtr Total
ABHA	Children	680	4.5%	726	4.8%
	Adults	802	6.1%	793	6.5%
Clackamas	Children	604	4.1%	666	4.4%
	Adults	1,042	8.9%	1,071	9.6%
FamilyCare	Children	245	3.6%	234	3.5%
	Adults	441	6.7%	391	6.9%
GOBHI	Children	792	4.6%	806	4.6%
	Adults	1,321	9.2%	1,119	8.2%
JBH	Children	1,182	3.4%	923	2.6%
	Adults	2,415	7.1%	1,782	5.5%
LaneCare	Children	1,471	7.9%	1,508	8.1%
	Adults	2,186	11.8%	2,147	12.2%
MVBCN	Children	2,131	5.0%	2,237	5.3%
	Adults	3,196	10.4%	3,093	10.5%
Verity	Children	2,328	6.0%	2,276	5.9%
	Adults	4,329	11.4%	4,161	11.6%
Washington	Children	324	1.6%	306	1.5%
	Adults	893	6.7%	874	6.9%

¹ Unique Served: All duplicate records are removed.

TABLE 9: UNIQUE¹ MEMBERS SERVED BY AGE GROUP WITH PENETRATION² RATE

MHO Contractors	Age Groups	4 th Qtr 2004	Rate	1 st Qtr 2005	Rate
ABHA	0-17	680	4.5%	726	4.8%
	18-64	767	6.7%	756	7.2%
	65+	35	2.1%	37	2.2%
Clackamas	0-17	604	4.1%	666	4.4%
	18-64	998	10.2%	1,035	11.2%
	65+	44	2.3%	36	1.9%
FamilyCare	0-17	245	3.6%	234	3.5%
	18-64	436	7.0%	386	7.3%
	65+	5	1.5%	5	1.5%
GOBHI	0-17	792	4.6%	806	4.6%
	18-64	1,264	10.4%	1,072	9.4%
	65+	57	2.6%	47	2.1%
JBH	0-17	1,182	3.4%	923	2.6%
	18-64	2,366	8.0%	1,741	6.3%
	65+	49	1.1%	41	0.9%
LaneCare	0-17	1,471	7.9%	1,508	8.1%
	18-64	2,137	12.8%	2,100	13.3%
	65+	49	2.6%	47	2.5%
MVBCN	0-17	2,131	5.0%	2,237	5.3%
	18-64	3,044	11.4%	2,954	11.7%
	65+	152	3.6%	139	3.3%
Verity	0-17	2,328	6.0%	2,276	5.9%
	18-64	4,040	12.7%	3,852	12.9%
	65+	289	4.7%	309	5.1%
Washington	0-17	324	1.6%	306	1.5%
	18-64	842	7.6%	833	8.1%
	65+	51	2.2%	41	1.8%
Total Served	0-17	9,757	4.7%	9,682	4.6%
	18-64	15,894	10.2%	14,729	10.1%
	65+	731	2.9%	702	2.8%

Note: FFS data does not have accurate recipient date of birth and is not included in this specific data table.

¹ Unique Served: All duplicate records are removed.

² Penetration Rate: Unique Served divided by Enrolled.

FIGURE 6: PERCENTAGE OF TOTAL UNIQUE¹ MEMBERS SERVED BY ETHNICITY

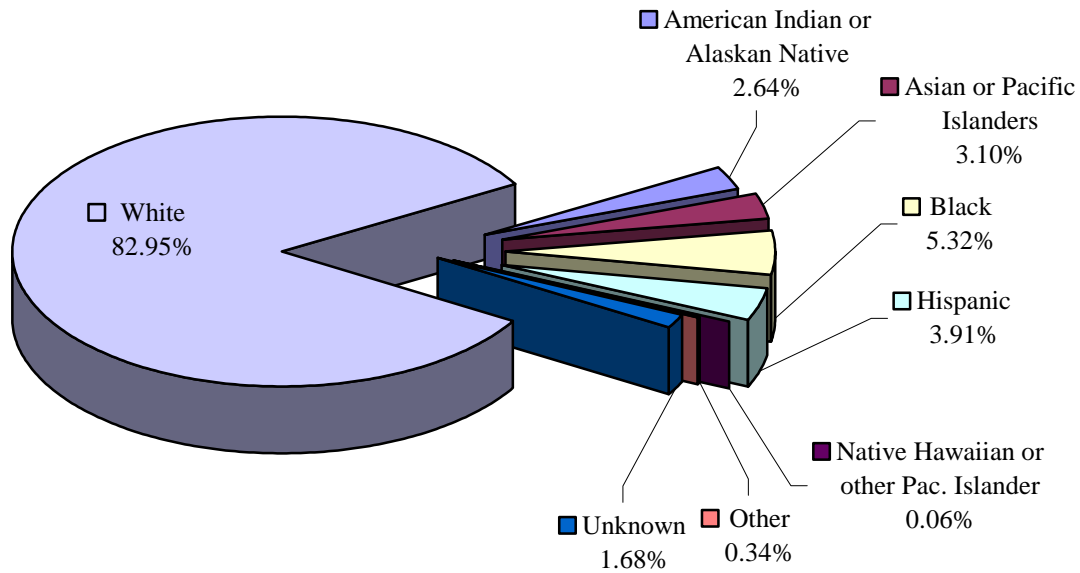


TABLE 10: UNIQUE MEMBERS SERVED BY ETHNICITY WITH PENETRATION² RATE: ACTUAL COUNT BY QUARTER

MHO Contractors	Race Description	4 th Qtr 2004	Rate	1 st Qtr 2005	Rate
ABHA	American Indian or Alaskan Native	22	1.7%	32	2.7%
	Asian or Pacific Islanders	3	1.3%	3	1.3%
	Black	9	3.4%	13	5.2%
	Hispanic	38	1.4%	37	1.3%
	Native Hawaiian/other Pac. Islander	2	9.1%	1	4.3%
	Other	4	2.9%	3	2.3%
	Unknown	25	14.5%	23	12.8%
	White	1,379	5.9%	1,407	6.3%
Clackamas	American Indian or Alaskan Native	22	5.6%	25	6.4%
	Asian or Pacific Islanders	22	4.6%	22	4.5%
	Black	30	6.2%	32	6.4%
	Hispanic	50	1.1%	73	1.6%
	Native Hawaiian/other Pac. Islander	3	13.0%	3	9.4%
	Other	5	3.4%	2	1.4%
	Unknown	19	11.1%	24	13.6%
	White	1,495	7.4%	1,556	7.9%

¹ Unique Served: All duplicate records are removed.

² Penetration Rate: Unique Served divided by Enrolled.

TABLE 10: UNIQUE¹ MEMBERS SERVED BY ETHNICITY WITH PENETRATION² RATE: ACTUAL COUNT BY QUARTER (*continued*)

MHO Contractors	Race Description	4 th Qtr 2004	Rate	1 st Qtr 2005	Rate
FamilyCare	American Indian or Alaskan Native	14	7.3%	10	5.5%
	Asian or Pacific Islanders	28	3.7%	25	3.5%
	Black	71	4.5%	62	4.6%
	Hispanic	20	1.5%	28	2.1%
	Native Hawaiian/other Pac. Islander	0	0.0%	1	5.6%
	Other	1	0.8%	2	1.9%
	Unknown	6	10.9%	6	10.3%
	White	546	5.9%	491	5.7%
GOBHI	American Indian or Alaskan Native	59	7.4%	37	4.7%
	Asian or Pacific Islanders	7	3.7%	7	3.7%
	Black	22	6.8%	18	6.2%
	Hispanic	139	2.3%	128	2.1%
	Native Hawaiian/other Pac. Islander	1	4.8%	1	5.0%
	Other	4	3.0%	4	3.3%
	Unknown	33	13.1%	39	16.0%
	White	1,848	7.7%	1,691	7.3%
JBH	American Indian or Alaskan Native	112	5.3%	97	4.6%
	Asian or Pacific Islanders	9	2.5%	6	1.9%
	Black	45	6.8%	34	5.0%
	Hispanic	106	2.0%	76	1.4%
	Native Hawaiian/other Pac. Islander	1	1.4%	1	1.4%
	Other	10	4.0%	5	2.0%
	Unknown	64	11.1%	46	7.6%
	White	3,250	5.5%	2,440	4.2%
LaneCare	American Indian or Alaskan Native	66	9.4%	63	9.0%
	Asian or Pacific Islanders	25	4.8%	25	5.0%
	Black	80	8.9%	78	9.0%
	Hispanic	93	3.5%	94	3.5%
	Native Hawaiian/other Pac. Islander	1	3.2%	0	0.0%
	Other	16	7.7%	13	6.9%
	Unknown	102	26.1%	118	28.6%
	White	3,274	10.3%	3,264	10.6%

¹ Unique Served: All duplicate records are removed.² Penetration Rate: Unique Served divided by Enrolled.

TABLE 10: UNIQUE¹ MEMBERS SERVED BY ETHNICITY WITH PENETRATION² RATE: ACTUAL COUNT BY QUARTER (*continued*)

MHO Contractors	Race Description	4 th Qtr 2004	Rate	1 st Qtr 2005	Rate
MVBCN	American Indian or Alaskan Native	152	10.8%	137	11.4%
	Asian or Pacific Islanders	51	5.4%	48	5.2%
	Black	98	9.5%	112	10.9%
	Hispanic	300	1.8%	301	1.8%
	Native Hawaiian/other Pac. Islander	5	3.5%	7	4.3%
	Other	10	3.0%	13	4.1%
	Unknown	81	18.2%	86	19.4%
	White	4,630	8.9%	4,626	9.1%
Verity	American Indian or Alaskan Native	237	15.0%	250	16.6%
	Asian or Pacific Islanders	546	8.9%	541	9.1%
	Black	970	7.7%	946	7.7%
	Hispanic	215	2.0%	196	1.8%
	Native Hawaiian/other Pac. Islander	1	2.0%	1	1.4%
	Other	31	4.8%	35	5.7%
	Unknown	88	17.6%	78	16.1%
	White	4,569	10.3%	4,390	10.3%
Washington	American Indian or Alaskan Native	14	4.8%	10	3.6%
	Asian or Pacific Islanders	119	5.7%	109	5.4%
	Black	58	3.6%	61	3.9%
	Hispanic	63	0.6%	59	0.6%
	Native Hawaiian/other Pac. Islander	1	2.3%	1	2.0%
	Other	8	2.7%	10	3.3%
	Unknown	14	4.1%	11	3.2%
	White	940	5.0%	919	5.0%

¹ Unique Served: All duplicate records are removed.

² Penetration Rate: Unique Served divided by Enrolled.

TABLE 10: UNIQUE¹ MEMBERS SERVED BY ETHNICITY WITH PENETRATION² RATE: ACTUAL COUNT BY QUARTER (*continued*)

MHO Contractors	Race Description	4 th Qtr 2004	Rate	1 st Qtr 2005	Rate
Total Served	American Indian or Alaskan Native	698	7.9%	661	7.9%
	Asian or Pacific Islanders	810	6.9%	786	7.0%
	Black	1,383	7.1%	1,356	7.2%
	Hispanic	1,024	1.7%	992	1.6%
	Native Hawaiian/other Pac. Islander	15	3.6%	16	3.3%
	Other	89	3.9%	87	4.0%
	Unknown	432	14.9%	431	14.6%
	White	21,931	7.8%	20,784	7.6%
FFS	American Indian or Alaskan Native	45	0.6%	46	0.6%
	Asian or Pacific Islanders	12	0.2%	15	0.3%
	Black	58	0.6%	72	0.9%
	Hispanic	38	0.2%	37	0.2%
	Native Hawaiian/other Pac. Islander	2	1.1%	2	1.1%
	Other	0	0.0%	0	0.0%
	Unknown	28	1.2%	32	1.3%
	White	1,072	0.6%	1,278	0.8%

¹ Unique Served: All duplicate records are removed.

² Penetration Rate: Unique Served divided by Enrolled.

FIGURE 7: TOTAL UNIQUE¹ ENCOUNTERS BY SERVICE CATEGORIES

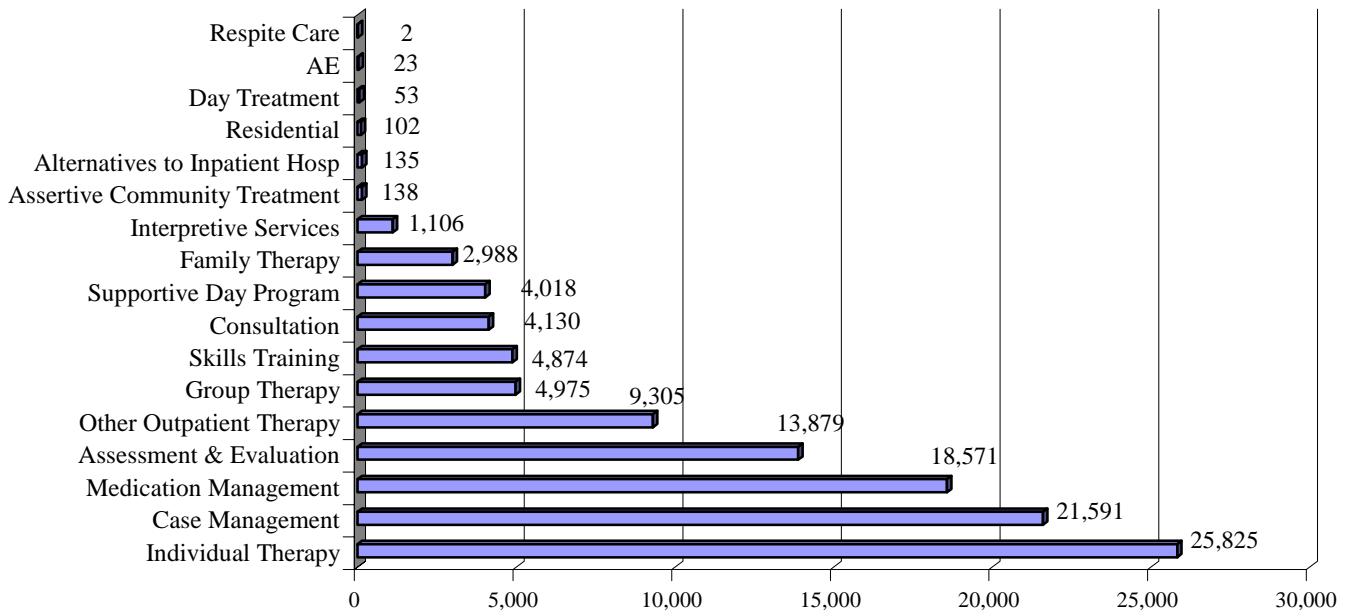


TABLE 11: UNIQUE ENCOUNTERS² BY SERVICE CATEGORIES (ABHA)

MHO Contractors	Service Categories	4 th Qtr 2004	1 st Qtr 2005
ABHA	AE	0	0
	Alternatives to Inpatient Hosp	0	1
	Assertive Community Treatment	5	7
	Assessment & Evaluation	468	444
	Case Management	545	504
	Consultation	184	241
	Day Treatment	0	0
	Family Therapy	125	151
	Group Therapy	168	206
	Individual Therapy	871	928
	Interpretive Services	1	0
	Medication Management	477	481
	Other Outpatient Therapy	256	280
	Residential	0	0
	Respite Care	0	0
	Skills Training	59	53
Supportive Day Program	101	84	

¹ Unique: All duplicate records are removed.

² Encounters: A contact or admission for covered services to OHP Member

**TABLE 11: UNIQUE¹ ENCOUNTERS² BY SERVICE CATEGORIES
(CLACKAMAS & FAMILYCARE) (Continued)**

MHO Contractors	Service Categories	4 th Qtr 2004	1 st Qtr 2005
Clackamas	AE	0	0
	Alternatives to Inpatient Hosp	3	4
	Assertive Community Treatment	0	0
	Assessment & Evaluation	510	522
	Case Management	840	973
	Consultation	219	212
	Day Treatment	0	0
	Family Therapy	34	51
	Group Therapy	120	98
	Individual Therapy	667	736
	Interpretive Services	5	6
	Medication Management	512	520
	Other Outpatient Therapy	312	297
	Residential	4	5
	Respite Care	0	0
	Skills Training	93	109
	Supportive Day Program	94	76
FamilyCare	AE	0	
	Alternatives to Inpatient Hosp	1	2
	Assertive Community Treatment	0	0
	Assessment & Evaluation	183	181
	Case Management	286	215
	Consultation	32	30
	Day Treatment	0	3
	Family Therapy	34	33
	Group Therapy	80	56
	Individual Therapy	312	320
	Interpretive Services	21	17
	Medication Management	231	160
	Other Outpatient Therapy	120	93
	Residential	0	0
	Respite Care	0	0
	Skills Training	57	38
	Supportive Day Program	63	50

¹ Unique Served: All duplicate records are removed.

² Encounters: A contact or admission for covered services to OHP Member.

**TABLE 11: UNIQUE¹ ENCOUNTERS² BY SERVICE CATEGORIES
(GOBHI & JBH) (Continued)**

MHO Contractors	Service Categories	4 th Qtr 2004	1 st Qtr 2005
GOBHI	AE	4	1
	Alternatives to Inpatient Hosp	0	0
	Assertive Community Treatment	13	50
	Assessment & Evaluation	619	527
	Case Management	1034	932
	Consultation	123	139
	Day Treatment	0	0
	Family Therapy	83	111
	Group Therapy	206	180
	Individual Therapy	804	755
	Interpretive Services	1	0
	Medication Management	837	694
	Other Outpatient Therapy	353	329
	Residential	0	0
	Respite Care	2	0
	Skills Training	239	250
	Supportive Day Program	207	200
JBH	AE	18	0
	Alternatives to Inpatient Hosp	21	0
	Assertive Community Treatment	0	1
	Assessment & Evaluation	1257	710
	Case Management	1193	1004
	Consultation	264	143
	Day Treatment	0	0
	Family Therapy	241	136
	Group Therapy	279	195
	Individual Therapy	1410	1042
	Interpretive Services	1	0
	Medication Management	1397	1168
	Other Outpatient Therapy	541	504
	Residential	17	0
	Respite Care	0	0
	Skills Training	230	151
	Supportive Day Program	111	101

¹ Unique Served: All duplicate records are removed.

² Encounters: A contact or admission for covered services to OHP Member.

**TABLE 11: UNIQUE¹ ENCOUNTERS² BY SERVICE CATEGORIES
(LANECARE & MVBCN) (Continued)**

MHO Contractors	Service Categories	4 th Qtr 2004	1 st Qtr 2005
LaneCare	AE	0	0
	Alternatives to Inpatient Hosp	20	21
	Assertive Community Treatment	27	20
	Assessment & Evaluation	1062	969
	Case Management	970	1035
	Consultation	243	227
	Day Treatment	0	0
	Family Therapy	147	161
	Group Therapy	164	222
	Individual Therapy	2753	2725
	Interpretive Services	8	7
	Medication Management	616	665
	Other Outpatient Therapy	813	838
	Residential	0	0
	Respite Care	0	0
	Skills Training	120	124
	Supportive Day Program	271	267
MVBCN	AE	0	0
	Alternatives to Inpatient Hosp	0	0
	Assertive Community Treatment	10	4
	Assessment & Evaluation	1564	1512
	Case Management	2322	2316
	Consultation	603	613
	Day Treatment	0	0
	Family Therapy	342	332
	Group Therapy	357	402
	Individual Therapy	3014	3005
	Interpretive Services	5	6
	Medication Management	2325	2219
	Other Outpatient Therapy	973	992
	Residential	0	0
	Respite Care	0	0
	Skills Training	383	378
	Supportive Day Program	81	70

¹ Unique Served: All duplicate records are removed.

² Encounters: A contact or admission for covered services to OHP Member.

**TABLE 11: UNIQUE¹ ENCOUNTERS² BY SERVICE CATEGORIES
(VERITY** & WASHINGTON) (Continued)**

MHO Contractors	Service Categories	4 th Qtr 2004	1 st Qtr 2005
Verity	AE	0	0
	Alternatives to Inpatient Hosp	27	35
	Assertive Community Treatment	0	0
	Assessment & Evaluation	1461	1135
	Case Management	3442	3171
	Consultation	342	328
	Day Treatment	20	30
	Family Therapy	506	470
	Group Therapy	1027	1009
	Individual Therapy	2534	2483
	Interpretive Services	380	430
	Medication Management	2881	2554
	Other Outpatient Therapy	1261	1118
	Residential	40	36
	Respite Care	0	0
	Skills Training	1219	1120
	Supportive Day Program	1174	1038
Washington	AE	0	0
	Alternatives to Inpatient Hosp	0	0
	Assertive Community Treatment	1	0
	Assessment & Evaluation	403	352
	Case Management	395	414
	Consultation	96	91
	Day Treatment	0	0
	Family Therapy	14	17
	Group Therapy	98	108
	Individual Therapy	721	745
	Interpretive Services	107	111
	Medication Management	417	417
	Other Outpatient Therapy	111	114
	Residential	0	0
	Respite Care	0	0
	Skills Training	117	134
	Supportive Day Program	12	18

¹ Unique Served: All duplicate records are removed.

² Encounters: A contact or admission for covered services to OHP Member.

**TABLE 11: UNIQUE¹ ENCOUNTERS² BY SERVICE CATEGORIES
(TOTAL SERVED & FEE-FOR-SERVICE³) (Continued)**

MHO Contractors	Service Categories	4 th Qtr 2004	1 st Qtr 2005
Total Served	AE	22	1
	Alternatives to Inpatient Hosp	72	63
	Assertive Community Treatment	56	82
	Assessment & Evaluation	7527	6352
	Case Management	11027	10564
	Consultation	2106	2024
	Day Treatment	20	33
	Family Therapy	1526	1462
	Group Therapy	2499	2476
	Individual Therapy	13086	12739
	Interpretive Services	529	577
	Medication Management	9693	8878
	Other Outpatient Therapy	4740	4565
	Residential	61	41
	Respite Care	2	0
	Skills Training	2517	2357
	Supportive Day Program	2114	1904
FFS	AE	0	0
	Alternatives to Inpatient Hosp	3	2
	Assertive Community Treatment	1	0
	Assessment & Evaluation	108	96
	Case Management	149	156
	Consultation	117	136
	Day Treatment	339	341
	Family Therapy	26	33
	Group Therapy	123	131
	Individual Therapy	340	431
	Interpretive Services	0	1
	Medication Management	477	649
	Other Outpatient Therapy	78	63
	Residential	0	0
	Respite Care	0	0
	Skills Training	316	328
	Supportive Day Program	227	225

¹ Unique Served: All duplicate records are removed.

² Encounters: A contact or admission for covered services to OHP Member.

³ Fee-For-Service (FFS): Eligible for OHP and NOT enrolled with an MHO (Open Card)

FIGURE 8: TOTAL UNIQUE¹ ENCOUNTERS² BY DIAGNOSTIC GROUPS

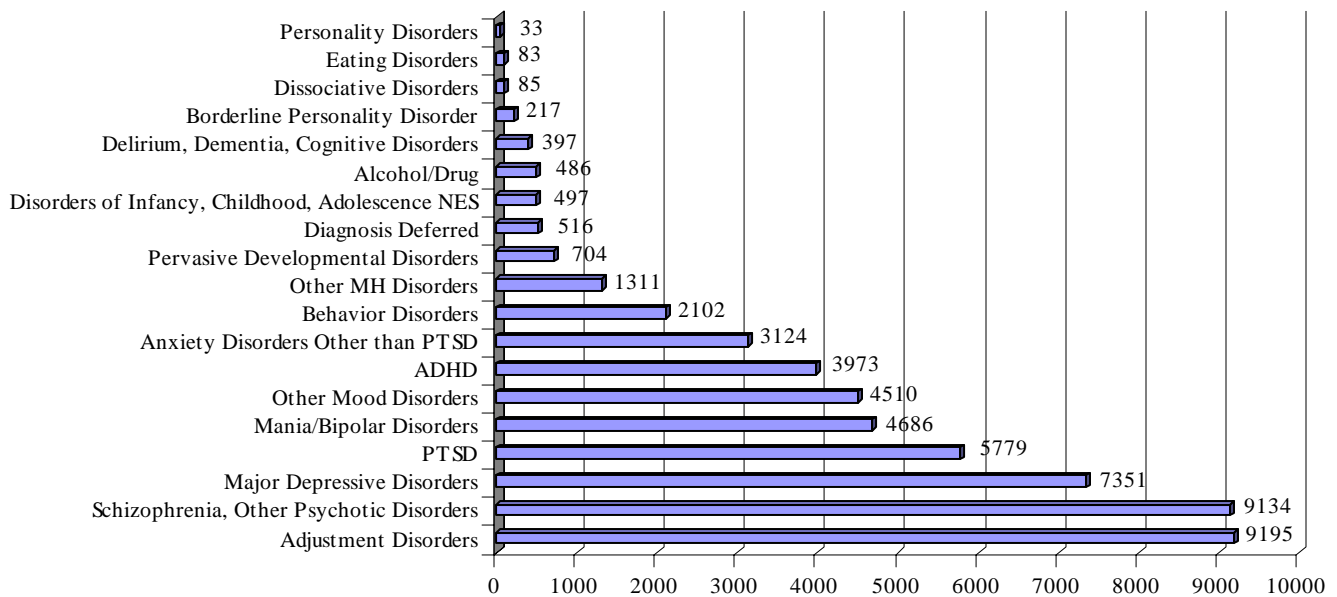


TABLE 12: UNIQUE ENCOUNTERS BY DIAGNOSTIC GROUPS (ABHA)

MHO Contractors	Diagnostic Group	4 th Qtr 2004	1 st Qtr 2005
ABHA	ADHD	131	133
	Adjustment Disorders	327	346
	Alcohol/Drug	11	4
	Anxiety Disorders Other than PTSD	99	109
	Behavior Disorders	39	40
	Borderline Personality Disorder	6	5
	Delirium, Dementia, Cognitive Disorders	17	11
	Diagnosis Deferred	63	74
	Disorders of Infancy, Childhood, Adolescence NES	7	6
	Dissociative Disorders	4	4
	Eating Disorders	3	5
	Major Depressive Disorders	195	191
	Mania/Bipolar Disorders	121	114
	Other MH Disorders	7	6
	Other Mood Disorders	144	135
	Personality Disorders	1	1
	Pervasive Developmental Disorders	7	12
	PTSD	185	182
Schizophrenia, Other Psychotic Disorders	146	158	

¹ Unique Served: All duplicate records are removed.

² Encounters: A contact or admission for covered services to OHP Member.

**TABLE 12: UNIQUE¹ ENCOUNTERS² BY DIAGNOSTIC GROUPS
(CLACKAMAS & FAMILYCARE) (Continued)**

MHO Contractors	Diagnostic Group	4 th Qtr 2004	1 st Qtr 2005
Clackamas	ADHD	142	161
	Adjustment Disorders	302	337
	Alcohol/Drug	62	66
	Anxiety Disorders Other than PTSD	97	122
	Behavior Disorders	80	70
	Borderline Personality Disorder	12	9
	Delirium, Dementia, Cognitive Disorders	15	12
	Diagnosis Deferred	6	9
	Disorders of Infancy, Childhood, Adolescence NES	11	7
	Dissociative Disorders	0	0
	Eating Disorders	4	4
	Major Depressive Disorders	183	195
	Mania/Bipolar Disorders	131	119
	Other MH Disorders	26	39
	Other Mood Disorders	171	175
	Personality Disorders	0	0
	Pervasive Developmental Disorders	24	25
	PTSD	114	130
	Schizophrenia, Other Psychotic Disorders	345	330
FamilyCare	ADHD	53	64
	Adjustment Disorders	102	75
	Alcohol/Drug	28	36
	Anxiety Disorders Other than PTSD	60	53
	Behavior Disorders	40	35
	Borderline Personality Disorder	2	0
	Delirium, Dementia, Cognitive Disorders	0	0
	Diagnosis Deferred	2	1
	Disorders of Infancy, Childhood, Adolescence NES	9	7
	Dissociative Disorders	0	0
	Eating Disorders	2	3
	Major Depressive Disorders	121	115
	Mania/Bipolar Disorders	67	58
	Other MH Disorders	4	4
	Other Mood Disorders	65	67
	Personality Disorders	0	0
	Pervasive Developmental Disorders	4	4
	PTSD	73	75
	Schizophrenia, Other Psychotic Disorders	91	75

¹ Unique Served: All duplicate records are removed.

² Encounters: A contact or admission for covered services to OHP Member.

**TABLE 12: UNIQUE¹ ENCOUNTERS² BY DIAGNOSTIC GROUPS
(GOBHI & JBH) (Continued)**

MHO Contractors	Diagnostic Group	4 th Qtr 2004	1 st Qtr 2005
GOBHI	ADHD	237	213
	Adjustment Disorders	269	287
	Alcohol/Drug	34	26
	Anxiety Disorders Other than PTSD	137	116
	Behavior Disorders	101	95
	Borderline Personality Disorder	6	3
	Delirium, Dementia, Cognitive Disorders	15	14
	Diagnosis Deferred	122	75
	Disorders of Infancy, Childhood, Adolescence NES	41	32
	Dissociative Disorders	3	4
	Eating Disorders	2	2
	Major Depressive Disorders	219	157
	Mania/Bipolar Disorders	216	188
	Other MH Disorders	123	116
	Other Mood Disorders	252	240
	Personality Disorders	10	0
	Pervasive Developmental Disorders	25	21
	PTSD	209	183
	Schizophrenia, Other Psychotic Disorders	349	321
JBH	ADHD	228	186
	Adjustment Disorders	554	400
	Alcohol/Drug	25	10
	Anxiety Disorders Other than PTSD	236	165
	Behavior Disorders	159	114
	Borderline Personality Disorder	24	24
	Delirium, Dementia, Cognitive Disorders	25	22
	Diagnosis Deferred	28	20
	Disorders of Infancy, Childhood, Adolescence NES	18	20
	Dissociative Disorders	6	1
	Eating Disorders	8	5
	Major Depressive Disorders	396	297
	Mania/Bipolar Disorders	461	397
	Other MH Disorders	130	35
	Other Mood Disorders	395	235
	Personality Disorders	1	0
	Pervasive Developmental Disorders	50	31
	PTSD	338	235
	Schizophrenia, Other Psychotic Disorders	678	533

¹ Unique Served: All duplicate records are removed.

² Encounters: A contact or admission for covered services to OHP Member.

**TABLE 12: UNIQUE¹ ENCOUNTERS² BY DIAGNOSTIC GROUPS
(LANECARE & MVBCN) (Continued)**

MHO Contractors	Diagnostic Group	4 th Qtr 2004	1 st Qtr 2005
LaneCare	ADHD	220	247
	Adjustment Disorders	777	824
	Alcohol/Drug	6	6
	Anxiety Disorders Other than PTSD	246	239
	Behavior Disorders	203	199
	Borderline Personality Disorder	4	2
	Delirium, Dementia, Cognitive Disorders	2	5
	Diagnosis Deferred	0	0
	Disorders of Infancy, Childhood, Adolescence NES	31	36
	Dissociative Disorders	7	6
	Eating Disorders	2	2
	Major Depressive Disorders	464	490
	Mania/Bipolar Disorders	304	296
	Other MH Disorders	271	106
	Other Mood Disorders	310	329
	Personality Disorders	1	1
	Pervasive Developmental Disorders	46	50
	PTSD	545	566
	Schizophrenia, Other Psychotic Disorders	521	509
	MVBCN	ADHD	395
Adjustment Disorders		1185	1257
Alcohol/Drug		13	7
Anxiety Disorders Other than PTSD		309	265
Behavior Disorders		201	190
Borderline Personality Disorder		44	53
Delirium, Dementia, Cognitive Disorders		86	71
Diagnosis Deferred		0	0
Disorders of Infancy, Childhood, Adolescence NES		45	46
Dissociative Disorders		18	17
Eating Disorders		13	10
Major Depressive Disorders		875	844
Mania/Bipolar Disorders		447	448
Other MH Disorders		115	142
Other Mood Disorders		397	361
Personality Disorders		1	1
Pervasive Developmental Disorders		100	107
PTSD		584	619
Schizophrenia, Other Psychotic Disorders		900	866

¹ Unique Served: All duplicate records are removed.

² Encounters: A contact or admission for covered services to OHP Member.

**TABLE 12: UNIQUE¹ ENCOUNTERS² BY DIAGNOSTIC GROUPS
(VERITY & WASHINGTON) (Continued)**

MHO Contractors	Diagnostic Group	4 th Qtr 2004	1 st Qtr 2005
Verity	ADHD	494	482
	Adjustment Disorders	927	939
	Alcohol/Drug	82	70
	Anxiety Disorders Other than PTSD	344	356
	Behavior Disorders	224	232
	Borderline Personality Disorder	11	11
	Delirium, Dementia, Cognitive Disorders	48	38
	Diagnosis Deferred	58	58
	Disorders of Infancy, Childhood, Adolescence NES	81	80
	Dissociative Disorders	9	6
	Eating Disorders	9	7
	Major Depressive Disorders	1084	1056
	Mania/Bipolar Disorders	548	491
	Other MH Disorders	99	83
	Other Mood Disorders	559	533
	Personality Disorders	8	7
	Pervasive Developmental Disorders	88	84
	PTSD	726	721
	Schizophrenia, Other Psychotic Disorders	1425	1337
Washington	ADHD	104	79
	Adjustment Disorders	130	157
	Alcohol/Drug	0	0
	Anxiety Disorders Other than PTSD	81	90
	Behavior Disorders	43	37
	Borderline Personality Disorder	1	0
	Delirium, Dementia, Cognitive Disorders	9	7
	Diagnosis Deferred	0	0
	Disorders of Infancy, Childhood, Adolescence NES	12	8
	Dissociative Disorders	0	0
	Eating Disorders	0	2
	Major Depressive Disorders	247	222
	Mania/Bipolar Disorders	140	140
	Other MH Disorders	3	2
	Other Mood Disorders	73	69
	Personality Disorders	0	1
	Pervasive Developmental Disorders	12	14
	PTSD	149	145
	Schizophrenia, Other Psychotic Disorders	273	277

¹ Unique Served: All duplicate records are removed.² Encounters: A contact or admission for covered services to OHP Member.

**TABLE 12: UNIQUE¹ ENCOUNTERS² BY DIAGNOSTIC GROUPS
(TOTAL ENCOUNTERS & FFS³) (Continued)**

MHO Contractors	Diagnostic Group	4 th Qtr 2004	1 st Qtr 2005
Total Encounters	ADHD	2004	1969
	Adjustment Disorders	4573	4622
	Alcohol/Drug	261	225
	Anxiety Disorders Other than PTSD	1609	1515
	Behavior Disorders	1090	1012
	Borderline Personality Disorder	110	107
	Delirium, Dementia, Cognitive Disorders	217	180
	Diagnosis Deferred	279	237
	Disorders of Infancy, Childhood, Adolescence NES	255	242
	Dissociative Disorders	47	38
	Eating Disorders	43	40
	Major Depressive Disorders	3784	3567
	Mania/Bipolar Disorders	2435	2251
	Other MH Disorders	778	533
	Other Mood Disorders	2366	2144
	Personality Disorders	22	11
	Pervasive Developmental Disorders	356	348
	PTSD	2923	2856
Schizophrenia, Other Psychotic Disorders	4728	4406	
FFS	ADHD	130	132
	Adjustment Disorders	104	112
	Alcohol/Drug	15	23
	Anxiety Disorders Other than PTSD	37	47
	Behavior Disorders	96	96
	Borderline Personality Disorder	0	2
	Delirium, Dementia, Cognitive Disorders	12	16
	Diagnosis Deferred	0	0
	Disorders of Infancy, Childhood, Adolescence NES	30	26
	Dissociative Disorders	1	3
	Eating Disorders	0	1
	Major Depressive Disorders	97	128
	Mania/Bipolar Disorders	126	141
	Other MH Disorders	10	9
	Other Mood Disorders	56	77
	Personality Disorders	0	0
	Pervasive Developmental Disorders	24	24
	PTSD	132	142
Schizophrenia, Other Psychotic Disorders	421	531	

¹ Unique Served: All duplicate records are removed.

² Encounters: A contact or admission for covered services to OHP Member.

³ Fee-For-Service (FFS): Eligible for OHP and NOT enrolled with an MHO (Open Card)

Hospital Data

TABLE 13: UNIQUE¹ HOSPITAL ADMISSIONS PER 1,000 MEMBERS²

MHO Contractors	4th Qtr 2004	1st Qtr 2005
ABHA	1.46	0.55
Clackamas	1.28	1.26
FamilyCare	1.73	1.61
GOBHI	0.35	0.16
JBH	2.32	2.02
LaneCare	2.29	2.27
MVBCN	0.72	0.78
Verity	2.71	3.01
Washington	2.40	2.41
Quarterly Totals	1.79	1.71

TABLE 14: UNIQUE HOSPITAL ADMISSIONS BY AGE GROUPS PER 1,000 MEMBERS

MHO Contractors	Age Group	4th Qtr 2004	1st Qtr 2005
ABHA	0-17	0.53	0.46
	18-64	2.89	0.76
	65+	0.00	0.00
Clackamas	0-17	0.47	0.73
	18-64	2.66	2.37
	65+	0.52	0.00
FamilyCare	0-17	0.44	0.59
	18-64	3.22	3.01
	65+	0.00	0.00
GOBHI	0-17	0.17	0.06
	18-64	0.66	0.35
	65+	0.00	0.00
JBH	0-17	1.00	0.92
	18-64	4.09	3.68
	65+	0.90	0.22
LaneCare	0-17	0.32	0.22
	18-64	4.44	4.94
	65+	2.70	0.00

¹ Unique: All duplicated records are removed.

² Per 1,000 members is the number enrolled divided by 1,000

TABLE 14: UNIQUE¹ HOSPITAL ADMISSIONS BY AGE GROUPS PER 1,000 MEMBERS²

MHO Contractors	Age Group	4 th Qtr 2004	1 st Qtr 2005
MVBCN	0-17	0.17	0.12
	18-64	1.69	1.91
	65+	0.24	0.72
Verity	0-17	0.91	1.01
	18-64	5.30	6.05
	65+	0.49	0.82
Washington	0-17	0.85	1.12
	18-64	5.52	5.24
	65+	0.88	1.29
Total	0-17	0.58	0.60
	18-64	3.59	3.53
	65+	0.64	0.48

TABLE 15: TOTAL UNIQUE HOSPITAL DAYS PER 1,000 MEMBERS

MHO Contractors	4 th Qtr 2004	1 st Qtr 2005
ABHA	8.2	4.4
Clackamas	10.0	8.4
FamilyCare	11.6	10.8
GOBHI	2.6	1.0
JBH	15.7	16.8
LaneCare	18.8	25.7
MVBCN	8.2	8.6
Verity	17.8	34.9
Washington	15.7	20.2
Total	12.9	17.0

¹ Unique: All duplicated records are removed

² Per 1,000 members is the number enrolled divided by 1,000

TABLE 16: TOTAL UNIQUE¹ HOSPITAL DAYS BY AGE GROUP PER 1,000 MEMBERS²

MHO Contractors	Age Groups	4th Qtr 2004	1st Qtr 2005
ABHA	0-17	2.2	4.3
	18-64	17.3	5.1
	65+	0.0	0.0
Clackamas	0-17	4.4	4.9
	18-64	19.3	15.7
	65+	5.2	0.0
FamilyCare	0-17	7.2	8.4
	18-64	16.9	14.5
	65+	0.0	0.0
GOBHI	0-17	1.5	0.5
	18-64	4.5	1.9
	65+	0.0	0.0
JBH	0-17	8.0	8.2
	18-64	24.4	29.6
	65+	19.1	4.9
LaneCare	0-17	1.1	2.2
	18-64	35.7	56.4
	65+	45.3	0.0
MVBCN	0-17	1.8	1.4
	18-64	19.5	20.3
	65+	1.0	10.3
Verity	0-17	6.7	7.1
	18-64	33.0	75.3
	65+	8.8	12.9
Washington	0-17	8.3	11.2
	18-64	31.0	37.2
	65+	6.6	25.5
Totals	0-17	4.7	5.2
	18-64	24.3	35.4
	65+	10.1	8.1

¹ Unique: All duplicated records are removed

² Per 1,000 members is the number enrolled divided by 1,000

TABLE 17: PERCENT OF HOSPITAL RE-ADMISSION WITHIN 30 DAYS

MHO Contractors	4 th Qtr 2004	1 st Qtr 2005
ABHA	12.2%	6.7%
Clackamas	5.9%	18.2%
FamilyCare	0.0%	10.0%
GOBHI	9.1%	20.0%
JBH	9.4%	16.3%
LaneCare	8.2%	22.0%
MVBCN	9.4%	5.4%
Verity	8.7%	15.2%
Washington	8.8%	17.5%
Total	8.6%	15.5%

TABLE 18: TOTAL HOSPITAL RE-ADMISSION WITHIN 180 DAYS

	4th Qtr 2004
ABHA	12.2%
Clackamas	5.9%
FamilyCare	4.3%
GOBHI	9.1%
JBH	12.5%
LaneCare	10.6%
MVBCN	11.3%
Verity	10.1%
Washington	8.8%
Total	8.9%

This table does not include the 1st Qtr of 2005 in this report due to the 180-day lag in data submission.

FIGURE 9: ENROLLED MEMBERS SEEN WITHIN 7 DAYS OF DISCHARGE: BY MONTH *(percentage based on total members seen after hospital discharge.)*

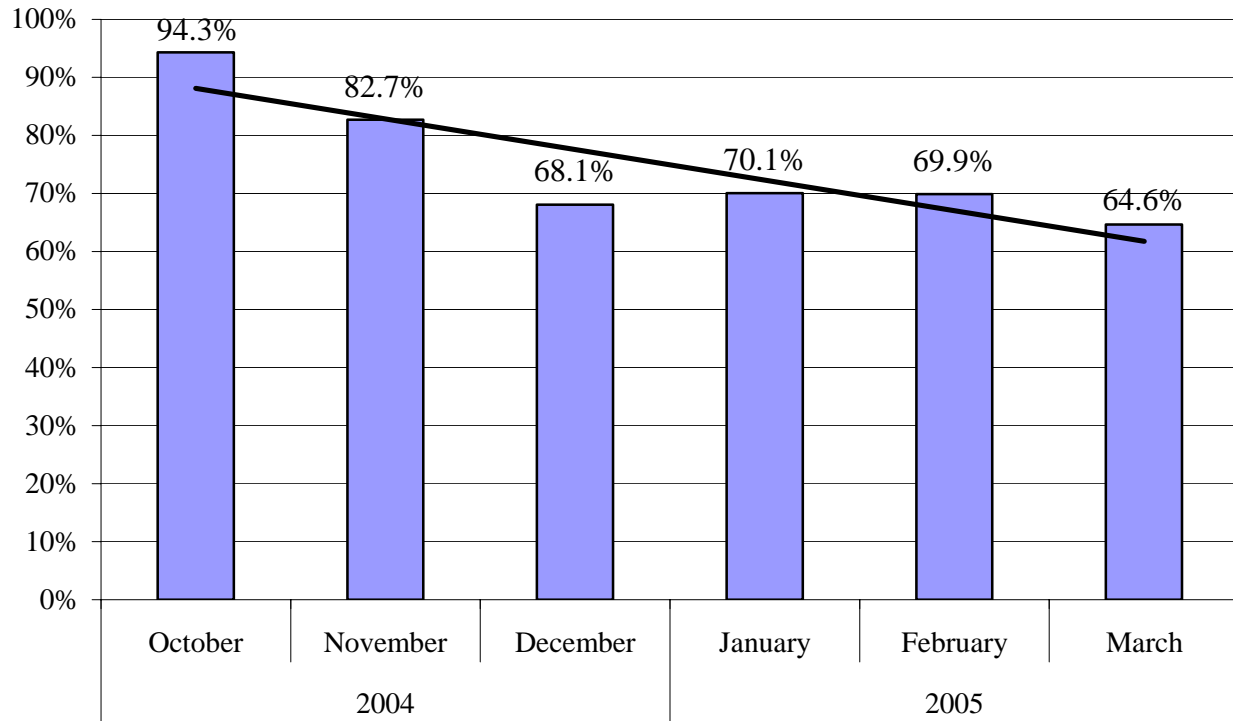


TABLE 19: ENROLLED MEMBERS SEEN WITHIN 7 DAYS OF DISCHARGE: BY MHO

MHO Contractors	4 th Qtr 2004	1 st Qtr 2005
ABHA	80.6%	46.7%
Clackamas	72.4%	65.5%
FamilyCare	84.6%	66.7%
GOBHI	62.5%	37.8%
JBH	78.3%	57.1%
LaneCare	80.3%	76.5%
MVBCN	74.2%	60.3%
Verity	85.6%	82.3%
Washington	83.0%	82.1%
Total	79.9%	68.0%

MHO UTILIZATION REPORT GLOSSARY

DIAGNOSIS CATEGORY:

Diagnosis categories are defined by the grouping of diagnoses in the most recent version of the American Psychiatric Association's Diagnostic and Statistical Manual (DSM).

ELIGIBLE:

An individual eligible for services under the OHP, but may not be enrolled into an MHO. Includes enrolled and fee-for-service.

ENCOUNTER:

An outpatient contact or Acute Inpatient Hospital Psychiatric Care admission for Covered Services provided to an OHP Member.

ENROLLED (ENROLLEE):

Eligible for the Oregon Health Plan (OHP) and enrolled in an MHO.

FEE-FOR-SERVICE (FFS):

Individuals who are eligible for the OHP, but are not enrolled with an MHO. This is also known as fee-for-service (FFS) or an "open card".

MENTAL HEALTH ORGANIZATION (MHO):

A Prepaid Health Plan under contract with DHS to provide Covered Services under the OHP Medicaid Demonstration Project and State Children's Health Insurance Program (SCHIP). MHOs can be FCHPs, CMHPs, or private MHOs or combinations thereof.

OFFICE OF MENTAL HEALTH AND ADDICTION SERVICES (OMHAS):

The program office of DHS responsible for the administration of mental health services for the State of Oregon.

OREGON HEALTH PLAN (OHP):

Oregon's health care reform effort consisting of a Medicaid Demonstration Project, State Children's Health Insurance Program, an individual insurance program for persons excluded from health insurance coverage due to pre-existing health conditions, and a group insurance program for small businesses. One objective of this reform effort includes universal coverage for Oregonians. In the context of this report, OHP refers to all individuals on FFS.

PENETRATION RATE:

Percent of enrollees served during a given time period. (See also: Percent Enrollees Served).

PERCENT ENROLLEES SERVED:

This is a general measure of access, but more related to utilization of services. It is a percentage calculated by summing the unique enrollees seen during a given time period and dividing that number by the total enrollees for that time period. For example, if there is 10,000 enrollees statewide in a given month and during that same month 500 of those enrollees receive services, the percent of enrollees served is 5%.

SERVICE CATEGORY:

Service category is a descriptive grouping of service codes (BA, ECC, and CPT) that are similar procedurally.

UNIQUE SERVED:

Unduplicated number of individuals receiving mental health services.

UNIQUE ENCOUNTERS:

Unduplicated services received by an individual(s) within a specific time period. One individual may have had several services provided – each service would be part of the calculations.

ENROLLMENT NUMBERS PER MONTH

MHO Contractor	Oct-04	Nov-04	Dec-04	Jan-05	Feb-05	Mar-05
ABHA	24,666	24,647	24,422	24,228	24,150	23,986
Clackamas	23,205	23,086	23,094	23,021	23,122	22,900
FamilyCare	11,157	10,834	10,820	10,473	10,334	10,387
GOBHI	28,126	27,787	27,608	27,392	27,431	27,512
JBH	61,104	60,588	60,452	59,549	59,557	59,174
LaneCare	33,213	32,939	32,802	32,451	32,362	32,178
MVBCN	64,887	64,039	64,440	63,785	63,806	63,798
Verity	68,705	68,143	67,952	66,985	66,847	66,686
Washington	25,071	29,182	29,164	28,995	29,012	29,472
Monthly Totals	340,134	341,245	340,754	336,879	336,621	336,093

% Monthly Increase/Decrease	0.33%	-0.14%	-1.15%	-0.08%	-0.16%	-1.20%
						Overall

Eligibles	432,883	428,525	425,340	423,653	422,467	423,617
FFS	170,129	135,898	154,314	134,544	147,473	147,424

UNIQUE MEMBERS SERVED PER MONTH

MHO Contractors	Oct-04	Nov-04	Dec-04	Jan-05	Feb-05	Mar-05
ABHA	2,586	2,944	2,865	3,162	3,074	2,706
Clackamas	2,646	3,012	3,068	3,287	2,965	3,476
FamilyCare	1,309	1,266	1,209	1,290	1,090	477
GOBHI	4,967	4,951	4,028	4,733	4,387	4,668
JBH	6,146	7,066	7,101	5,896	5,582	1,412
LaneCare	8,992	9,455	8,849	9,692	8,770	9,567
MVBCN	9,185	10,507	10,988	11,000	9,364	9,377
Verity	18,546	18,703	17,552	18,672	17,184	8,984
Washington	2,795	3,119	2,868	3,003	2,841	2,850
FFS	57,172	61,023	58,528	60,735	55,257	43,517
Total	2,586	2,944	2,865	3,162	3,074	2,706