

# Senator Kay Bailey Hutchison's Tourist Guide for Washington, DC

## Washington Attractions

### **African American Civil War Memorial and Museum** <http://www.afroamcivilwar.org>

The names of 209,145 United States Colored Troops (USCT) are inscribed on the Wall of Honor at the African American Civil War Memorial.

- Located at 1200 U Street, NW
- 202-667-2667
- Museum Hours: Monday to Friday, 10 am - 5:00 pm; Saturdays, 10:00 am - 2:00 pm
- Admission is free



### **Arlington National Cemetery** <http://www.arlingtoncemetery.org>

America's largest national burial ground covering 612 acres of landscaped hills. The Changing of the Guard at the Tomb of the Unknown Soldier occurs every hour on the hour; every half hour during the summer months. Arlington House, the home of Civil War General Robert E. Lee, sits on a hill overlooking the grounds.

- Located on Memorial Drive in Arlington, Virginia
- 703-692-0931
- Hours: Open daily 8 am - 7 pm, April - September; 8 am - 5 pm, October -
- Public Tours: Choice of a self-guided walking tour or a paid shuttle tour.
- Admission is free



### **Bureau of Engraving and Printing** <http://www.bep.treas.gov>

Over 70 billion dollars in cash is produced in this building every year.

- Located at 14th and C Streets, SW
- 202-874-2330 or 1-866-874-2330
- Visitor's Center Hours: 8:30 am – 7:30 pm; closed on all federal holidays.
- **The Senator's office is no longer accepting requests for tour dates through the end of August. Should you be interested in tours after August, please contact Senator Hutchison's office at 202-224-5922 to determine availability.**
- Public Tour: 9:00 am – 2:00 pm, Monday – Friday. Same-day tickets are required for all tours from through September, and are available on a first-come, first-served basis from the ticket booth located on Raoul Wallenberg Place beginning at 8:00 am. Tickets go quickly so be sure to be in line early. Tickets are not required for the public tour for October through February. All visitors must enter through the visitor's entrance on 14th Street, SW. The tour lasts about 45-50 minutes.
- Admission is free



### **Daughters of the American Revolution Museum** <http://www.dar.org/museum>

The DAR Museum has collected and preserved a remarkable collection of period pieces which vividly recall America's Revolutionary War era. A chest from the Boston Tea Party, Daniel Boone's ladderback chair, and replicas of home life in several states during the Revolution.

- Located at 1776 D Street, NW
- 202-879-3241
- Open: Monday-Friday, 8:30 am - 4:00 pm; Sunday, 1:00 pm - 5:00 pm
- Admission is free



### **Federal Bureau of Investigations** <http://www.fbi.gov>

One of the most interesting tourist attractions in Washington, the hour-long tour includes a review of famous crime cases, a crime lab investigation, and a visit to the indoor firing range.

- Located at 935 Pennsylvania Avenue, NW
- 202-324-3447
- **All tours have been suspended through 2005 due to ongoing renovations of the building.**



### **Folger Shakespeare Library** <http://www.folger.edu>

The library houses the world's largest collection of Shakespeare's printed works, as well as an authentic Elizabethan Theatre.

- Located at 201 East Capitol Street, SE
- 202-544-4600
- Open: Monday - Saturday, 10:00 am - 4:00 pm. Closed on all federal holidays.
- Guided 90-minute Tour: 11:00 am, Monday-Friday; 11:00 am and 1:00 pm, Saturday
- Admission is free



### **Ford's Theater and Lincoln Museum** <http://www.nps.gov/foth>

The theater where President Lincoln was assassinated has been restored as a center for the performing arts. The museum contains the President's stovepipe hat, cape and the suit he wore on the night of his assassination. Relics from Lincoln's youth and his Presidency are also displayed.

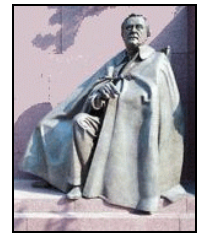
- Located at 511 10th Street, NW
- 202-426-6924
- Open: 9:00 am - 5:00 pm, daily (closed Christmas day)
- Admission is free



### **Franklin Delano Roosevelt Memorial** <http://www.nps.gov/fdrm>

A monument to our 32nd President, Franklin Delano Roosevelt, the FDR Memorial includes engraved red granite walls, waterfalls, reflecting pools, and gardens spread among four rooms representing Roosevelt's four terms in office.

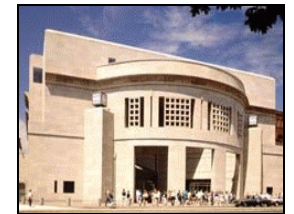
- Located at 1850 West Basin Drive, SW
- 202-376-6704
- Open daily: 8:00 am - Midnight; Closed Christmas
- Admission is free



### **Holocaust Museum** <http://www.ushmm.org>

The Holocaust Museum is a living memorial to honor the victims and survivors of the Holocaust. The permanent exhibit, housed on three floors, is not recommended for children under the age of eleven.

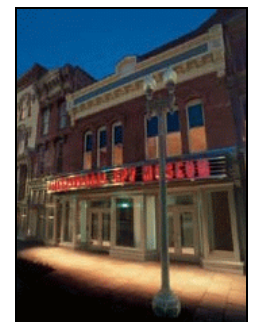
- Located at 100 Raoul Wallenberg Place, SW
- 202-488-0400
- Open: 10:00 am - 5:30 pm, daily; Closed Christmas and Yom Kippur
- Admission is free, but tickets to the permanent exhibit are required. Same-day, timed tickets can be obtained at the museum beginning at 8:00 a.m., or advance tickets can be purchased for a small fee by calling 1-800-400-9373 or online at <http://www.tickets.com>.



### **International Spy Museum** <http://www.spymuseum.org>

The International Spy Museum features the largest collection of international espionage-related artifacts open to the public. The museum chronicles the history of spying throughout the ages, across the globe, and today.

- Located at 800 F Street, NW
- 202-393-7798
- Open: 10:00 am - 8:00 pm, April - October; 10:00 am - 6:00 pm, November - ; Closed Thanksgiving, Christmas, and New Year's Day
- Admission: \$13.00, adult; \$12.00, seniors; \$10.00, children 5 and older; free, children under 5. Advance tickets are recommended and are available from the museum's ticket office or through Ticketmaster at <http://www.ticketmaster.com>.



### **Iwo Jima Memorial** <http://www.nps.gov/gwmp/usmc.htm>

The 78-foot memorial commemorates all the marines who have died in battle since 1775. The statue depicts one of the most famous incidents of World War II and stands as a symbol of this nation's esteem for the honored dead of the U.S. Marine Corps.

- Located on Route 50 near Arlington National Cemetery in Virginia
- 703-285-2601
- Open 24 hours a day
- Admission is free



### **Jefferson Memorial** <http://www.nps.gov/thje>

The Jefferson Memorial, honoring America's third President, Thomas Jefferson, contains a 19-foot bronze statue of Jefferson and inscriptions of passages of the Declaration of Independence and other famous Jefferson writings.

- Located at 14th Street, SW, on the Tidal Basin
- 202-426-6841
- Open 24 hours a day, except Christmas
- Admission is free



### **Kennedy Center** <http://www.kennedy-center.org>

A living memorial to President John F. Kennedy, the Kennedy Center is the nation's busiest arts facility, presenting more than 3,300 performances each year for audiences numbering more than two million. More than three million people tour the Center each year.

- Located at 2700 F Street, NW
- 202-416-8341
- Public Tour: 10:00 am - 5:00 pm, Monday-Friday; 10:00 am - 1:00 pm, Saturday-Sunday. The public tour starts at the Tour Desk in Motor Lobby A. The tour leaves every fifteen minutes and lasts about an hour.
- Free performances daily at 6:00 pm
- Admission is free



### **Korean War Veterans Memorial** <http://www.nps.gov/kwvm>

The Korean War Veterans Memorial features 19 foot soldiers arrayed for combat, with the American flag as their symbolic objective. A 164-foot wall is etched with 2,500 photographic images of the support personnel whose efforts sustained the military operation.

- Located adjacent to the Lincoln Memorial reflecting pool
- 202-619-7222
- Open daily, 8:00 am to midnight
- Admission is free



### **Library of Congress** <http://www.loc.gov>

The Library of Congress is the nation's oldest federal cultural institution, and it serves as the research arm of Congress. It is also the largest library in the world, with more than 120 million items on approximately 530 miles of bookshelves. The collections include more than 18 million books, 2.5 million recordings, 12 million photographs, 4.5 million maps, and 54 million manuscripts.

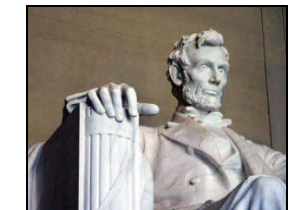
- Located at 10 1st Street, SE
- 202-707-5000
- Building Hours: The Jefferson Building is open from 10:00 am - 5:30 pm, Monday - Saturday. The Library is closed on Sunday and all federal holidays.
- Public Tour: 10:30, 11:30, 1:30, 2:30, and 3:30, Monday-Friday; 10:30, 11:30, 1:30, and 2:30, Saturday. The tour begins at the Visitor's Center Information Desk in the lobby of the Jefferson Building. Tour participants should use the West Front doors.
- Admission is free



### **Lincoln Memorial** <http://www.nps.gov/linc>

The Lincoln Memorial contains a 19-foot marble statue of our 16th President, Abraham Lincoln. The memorial also exhibits inscriptions of Lincoln's second Inaugural Address and the Gettysburg Address.

- Located at West Potomac Park and 23rd Street, NW
- 202-426-6841
- Open daily, except Christmas
- Admission is free



### **Marine Corps Evening Parade** <http://www.marineband.usmc.mil>

A two-hour musical and ing performance every Friday evening on the grounds of the Marine Barracks.

- Located at 8th and I Streets, SE
- 202-433-6060
- Hours: Friday evening, 8:00 pm, May - August
- Admission is free and tickets are not necessary.





### **Mount Vernon** <http://www.mountvernon.org>

Mount Vernon is George Washington's estate overlooking the Potomac River. It has been restored to its 18th century colonial grandeur and is the burial site for George and Martha Washington. Mount Vernon is surrounded by formal gardens designed by George Washington.

- Located 16 miles south of Washington on the George Washington Memorial Parkway
- 703-780-2000 (ext. 604) or 1-800-429-1520
- Hours: November-February, 9 am - 4 pm; April-August, 8 am - 5 pm; , September-October, 9 am - 5 pm
- Admission fees: Adults \$13; Seniors \$12; Children 6-11 \$6; children 5 and under \$0. Reduced group rates also available.



### **National Archives** <http://www.archives.gov>

The National Archives is the repository for legislative documents and historical records of Congress, as well as the entire Federal Government. The National Archives houses the Declaration of Independence, the original Constitution, the Charters of Freedom, and the Bill of Rights, as well as extensive genealogical and census files.

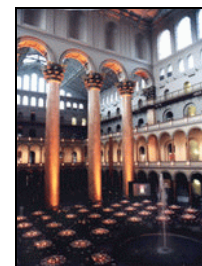
- Located at 7th Street and Pennsylvania Avenue, NW
- 1-866-272-6272
- Open daily 10:00 am – 5:30 pm. Tour reservations are not required.
- Admission is free.



### **National Building Museum** <http://www.nbm.org>

Housed in the historic Pension building, the museum presents exhibits on all aspects of architecture, building, and historic preservation. The permanent exhibit chronicles the building of the Nation's capital city.

- Located at 401 F Street, NW
- 202-272-2448
- Open daily 10:00 am – 5:00 pm, Monday – Saturday; 11:00 am to 5:00 pm, Sunday; Closed Thanksgiving, Christmas, and New Year's Day
- Admission if free



### **National Cathedral** <http://www.cathedral.org>

Washington National Cathedral is the sixth largest cathedral in the world and the second largest in the United States. The 14th century-Gothic style cathedral, garden, and shops sits on 57 acres in upper northwest Washington.

- Located at Massachusetts and Wisconsin Avenues, NW
- 202-537-6200
- Open: 10 am - 4:30 pm, daily; Nave level open until 9 pm, May 1 - Labor Day
- For tour Information, visit their website at <http://www.cathedral.org/cathedral/visit/tour.shtml>
- Admission is free



### **National Gallery of Art and East Wing** <http://www.nga.gov>

The National Gallery of Art houses masterpieces from medieval times to the present. The East wing highlights changing exhibits of art from around the world.

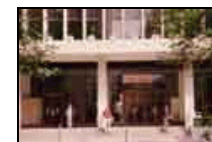
- Located at 6th Street and Constitution Avenue, NW
- 202-737-4215
- Open: 10:00 am - 5:00 pm, Monday - Saturday; 11:00 am - 6:00 pm, Sunday; Closed Christmas and New Year's Day.
- Admission is free



### **National Geographic's Explorers Hall** <http://www.nationalgeographic.com/explorer>

The centerpiece of the National Geographic Building features a giant rotating Earthglobe, Jacques Cousteau's diving saucer, Admiral Perry's arctic sled, and a special electronic map depicting many famous world expeditions.

- Located at 1145 17th Street, NW
- 202-857-7588 (recorded information)
- Open daily: 9:00 am - 5:00 pm, Monday - Saturday & holidays; 10:00 am - 5:00 pm, Sunday; closed Christmas
- Admission is free



### **National Law Enforcement Officers Memorial** <http://www.nleomf.com>

The elegant marble walls of this memorial display the names of more than 14,000 federal, state, and local law enforcement officers killed in the line of duty since 1794.

- Located on E Street, NW, between 4th and 5th Streets
- 202-737-3400
- Open 24 hours a day.
- Visitors Center Hours: 9:00 am - 5:00 pm, Monday-Friday; 10:00 am - 5:00 pm, Saturday; Noon - 5:00 pm, Sunday
- Admission is free



### **National Mall** <http://www.nps.gov/nama>

The National Mall is a green parkland area extending over two and a half miles from the U.S. Capitol to the Lincoln Memorial. Lining either side of the park is 200-year-old American elm trees, several of the Smithsonian Institution museums, monuments dedicated to our nation's greatest presidents, and memorials honoring the brave men and women of our military services.

- Located between Constitution and Independence Avenues from the U.S. Capitol to the Lincoln Memorial
- 202-485-9880
- Open: 24 hours a day
- Admission if free



### **National Shrine of the Immaculate Conception** <http://www.nationalshrine.com>

The National Shrine of the Immaculate Conception is the largest Roman Catholic church in the United States featuring beautiful architecture, chapels, and stained-glass windows.

- Located 400 Michigan Avenue, NE
- 202-526-8300
- Hours: November-, 7:00 am - 6:00 pm; April-October, 7:00 am - 7:00 pm
- Tours: Monday-Saturday, 9:00, 10:00, 11:00 am, 1:00, 2:00, 3:00 pm; Sunday, 1:30, 2:30, 3:30 pm.
- Admission is free



### **National Zoo** <http://natzoo.si.edu>

The 168-acre National Zoological Park is a year-round favorite of tourists and residents alike.

- Located at 3000 Connecticut Avenue, NW
- 202-673-4717
- Hours: 8:00 am - 6:00 pm, daily; extended evening hours during the spring and summer
- Admission is free



### **Naval Observatory** <http://www.usno.navy.mil>

The U.S. Naval Observatory is the preeminent authority in the areas of precise time and astrometry, and distributes earth orientation parameters and other astronomical data required for accurate navigation and fundamental astronomy.

- Located at 34th Street and Massachusetts Avenue, NW
- 202-762-1438
- Public tours are offered on alternating Monday evenings from 8:30 - 10:00 p.m. and are by reservation only. Visit the website at [http://www.usno.navy.mil/tour\\_info.shtml](http://www.usno.navy.mil/tour_info.shtml) to complete an online reservation form. Tour reservations must be submitted 4-6 weeks in advance. Visitors should enter the grounds via the South Gate located near the Embassy of New Zealand. Photo ID required for all adults. Admission is free.



## **Navy Memorial & Naval Heritage Center** <http://www.lonesailor.org>

The Navy Memorial honors the men and women of the U.S. Navy. It centers on a circular plaza bearing the world's largest map of the world, and consists of towering masts, waving flags, tiered waterfalls, and a seven-foot statue of a lone sailor overlooking the world's seas. The Naval Heritage Center, located in Suite 123 at 701 Pennsylvania Avenue, NW, offers interactive videos and a Ship store. An hourly presentation of the film "At Sea" is shown in the Heritage Center.



- Located at 7th Street and Pennsylvania Avenue, NW
- 202-737-2300 or 1-800-723-3557
- Memorial open daily
- Heritage Center Open: Summer, 9:30 am - 5 pm, Monday - Saturday; Winter, 9:30 am - 5:00 pm, Tuesday - Friday
- Admission is free but there is a charge for viewing the film, "At Sea."

## **The Pentagon** <http://www.dtic.mil/ref/html/Welcome/Wlcm.htm>

The Pentagon is the world's largest office building and is the headquarters for the U.S. Department of Defense.



- Located off Route I-395 in Arlington, Virginia
- 703-697-1776
- Public Tours: **Due to security concerns, the public tour is available only for school groups (middle school through college) and military organizations.** For detailed information on the tour, visit <http://hutchison.senate.gov/pentagontours.pdf>. (Must have Adobe Acrobat Reader installed on your computer to view the file.) Call the number listed above or e-mail [tourschd.pa@osd.mil](mailto:tourschd.pa@osd.mil) to schedule a group tour.
- Admission is free

## **Smithsonian Institution Museums** <http://www.si.edu>

The Smithsonian museums and galleries feature hundreds of major exhibitions, and fascinating details of America's cultural, political, technological, and natural history.



- Located on the National Mall and at various locations in Washington
- 202-357-2020
- Open daily, 10:00 am - 5:30 pm (closed Christmas)
- Admission is free and tickets are not required
- The Smithsonian is comprised of the following museums and galleries:
  - Anacostia Museum**, 1901 Fort Place, SE
  - Arthur M. Sackler Gallery**, 1050 Independence Avenue, SW
  - Arts and Industries Building**, 900 Jefferson Drive, SW
  - The Castle**, 1000 Jefferson Drive, SW
  - Cooper-Hewitt National Design Museum**,
  - Freer Gallery of Art**, 12th Street and Jefferson Drive, SW
  - Hirshhorn Museum and Sculpture Garden**, 7th Street and Independence Ave., SW
  - National Air and Space Museum**, 600 Independence Avenue, SW
  - National Museum of African Art**, 950 Independence Avenue, SW
  - National Museum of American Art**, 8th and G Streets, NW
  - National Museum of American History**, 14th Street and Constitution Avenue, NW
  - National Museum of the American Indian**, 4th Street & Independence Avenue, NW
  - National Museum of Natural History**, 10th Street and Constitution Avenue, NW
  - National Portrait Gallery**, 8th and F Streets, NW
  - National Postal Museum**, 2 Massachusetts Avenue, NE
  - National Zoo**, 3000 Connecticut Avenue, NW
  - Renwick Gallery**, 17th Street and Pennsylvania Avenue, NW
  - S. Dillon Ripley Center**, 1100 Jefferson Drive, SW





Map of the Smithsonian National Museums in the National Mall area.

### State Department <http://www.state.gov>

The State Department, headquarters of American foreign policy, features displays of fine 18th century furniture and an Americana collection in the diplomatic reception rooms.



- Located at 2201 C Street, NW
- 202-647-3241
- Public Tour: 9:30 am, 10:30 am & 2:45 pm, Monday – Friday. The tour is 45 minutes in duration. Reservations are required and should be made approximately four weeks in advance, due to the large volume of requests.

### Supreme Court <http://www.supremecourtus.gov>

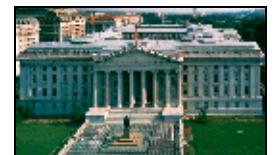
The Supreme Court sits in session beginning the first Monday in October and continues to meet two weeks per month through April. Courtroom seats are available on a first-come, first-served basis. Visitors can observe the court from 10:00 am - 12:00 pm and 1:00 - 3:00 pm when cases are being tried.



- **The Senator's office is no longer accepting requests for tour dates through the end of July.**
- Located at 1st Street and Maryland Avenue, NE
- 202-479-3030
- Public Tour: 9:30 am – 3:30 pm, Monday – Friday, every hour on the half-hour when the Court is not in session.
- Admission is free

### Treasury Department <http://www.ustreas.gov>

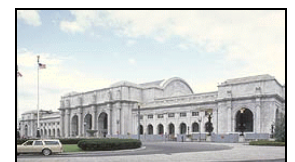
The Treasury Building houses the office of the Secretary of the Treasury and is an example of construction technology and decoration of the 19th century.



- Located at 15th Street and Pennsylvania Avenue, NW
- 202-622-0896
- **Due to security concerns, all public tours have been suspended indefinitely.**
- Admission is free

### Union Station <http://www.unionstationdc.com>

A working train station for over 90 years, Union Station consists of 125 stores, restaurants, food court, 9-screen cinema complex, car rentals, and Amtrak ticket counter. Union Station attracts more than 23 million visitors annually.



- Located at 50 Massachusetts Avenue, NE
- 202-289-1908 or 1-800-527-2554
- Store Hours: 10 am - 9 pm, Monday-Saturday; Noon - 6 pm, Sunday (restaurant hours vary)
- Admission is free

### **U.S. Botanic Gardens** <http://www.usbg.gov>

Located at the base of Capitol Hill, the conservatory features more than 8,000 varieties of exotic flowers, fruits and plants.

- Located at 1st Street and Maryland Avenue, SW
- 202-225-8333 or 202-226-4082 (group tours)
- Open: 10:00 am - 5:00 pm, daily
- Public Tour: 11:00 am - 1:30 pm, daily for walk-in visitors on a first-come basis. Group tour for ten or more: 10:30 am and 1:00 pm, Monday - Friday. Reservations must be made at least three weeks in advance for group tours.
- Admission is free



### **U.S. Capitol** <http://www.aoc.gov>

The United States Capitol is among the most architecturally impressive and symbolically important buildings in the world. It has housed the meeting chambers of the Senate and the House of Representatives for almost two centuries. Begun in 1793, the Capitol has been built, burnt, rebuilt, extended, and restored. Today, it stands as a monument not only to its builders but also to the American people and their government.

- Located at 1st and East Capitol Streets, NE
- 202-225-6827
- Public Tours: The Capitol is open to the public for guided tours only from 9:00 am - 4:30 pm, Monday through Saturday. Tickets are required and may be obtained at the Capitol Guide Service kiosk on the grounds of the U.S. Capitol beginning at 9:00 am, Monday through Saturday. Be sure to arrive early as tickets are limited and available on a first-come, first-served basis. The Capitol Guide Service kiosk is located at First Street and Independence Avenue, SW. For a map of the Capitol grounds visit [http://www.aoc.gov/visit/visit\\_overview.htm](http://www.aoc.gov/visit/visit_overview.htm).
- Admission is free



### **U.S. National Arboretum** <http://www.usna.usda.gov>

Four hundred fifteen acres of beautiful flowers and trees have blossomed from this 1927 experimental plant life center. The Arboretum can be toured free of charge by car, bus, bicycle, or by foot.

- Located at 24th and R Streets, NE (Visitor entrances: New York Avenue & R Street)
- 202-245-4544
- Open daily, except Christmas
- Arboretum Grounds Open: 8:00 am - 5:00 pm; Museum: 10:00 am - 3:30 pm
- Tram tours are available on the weekends beginning mid-April and ending mid-October. Tram tickets on sale at the ticket kiosk, day of tour only. Tram Hours: 10:30 am, 11:30 am, 1:00 pm, 2:00 pm, 3:00 pm, 4:00 pm. Tram Prices: Adults, \$3.00; Seniors, \$2.00; Children (4-16 years old), \$1.00; Children (under 4 years old), Free
- Admission is free



### **Vietnam Veterans Memorial** <http://www.nps.gov/vive>

The Vietnam Veterans Memorial honors the men and women of the armed forces who served in the Vietnam War. The V-shaped memorial is made of black granite and is inscribed with the names of the 58,209 Americans missing or killed in the Vietnam War.

- Located at Constitution Avenue and Henry Bacon Drive, NW
- 202-634-1568
- Open 24 hours a day
- Admission is free



### **Washington Monument** <http://www.nps.gov/wamo>

The Washington Monument is one of the tallest masonry structures in the world standing 555 feet tall. The monument is dedicated to the memory of our nation's first president, George Washington.

- Located at 15th Street and Constitution Avenue, NW
- 202-426-6841 or 1-800-967-2283
- Open daily 9:00 am - 5:00 pm, except Christmas and 4th of July
- Admission is free, although tickets are required. Same-day timed tickets may be obtained at the ticket kiosk on 15th Street at the base of the monument beginning at 8:00 am, or advanced tickets may be obtained for a small fee at <http://reservations.nps.gov/>.





## White House <http://www.whitehouse.gov>

The White House has been the home of every president of the United States except George Washington.

- Located at 1600 Pennsylvania Avenue, NW
- 202-456-7041
- Self-Guided Group Tour: 7:30 am - 12:30 pm, Tuesday - Saturday. The self-guided tour lasts between 20-30 minutes.
- **The Senator's office is no longer accepting requests for tour dates through the end of August. Should you be interested in tours after August, please contact Senator Hutchison's office at 202-224-5922 to determine availability.**
- **Due to security concerns, the self-guided public tour is currently available only to groups of 10 or more.** Any group meeting the criteria must submit their request through a Congressional office at least 90 days prior to their arrival in Washington, but no earlier than 6 months in advance. **We encourage you to submit your request as early as possible.** A list of the names of the individuals on the tour, including their social security number, date of birth, and country of citizenship must be received by the Congressional office at least 3 weeks prior to the date of the tour. Additions to the list may not be made after the list has been submitted to the White House. Call Senator Hutchison's office at 202-224-5922 to request your White House tour or for more information.
- Admission is free



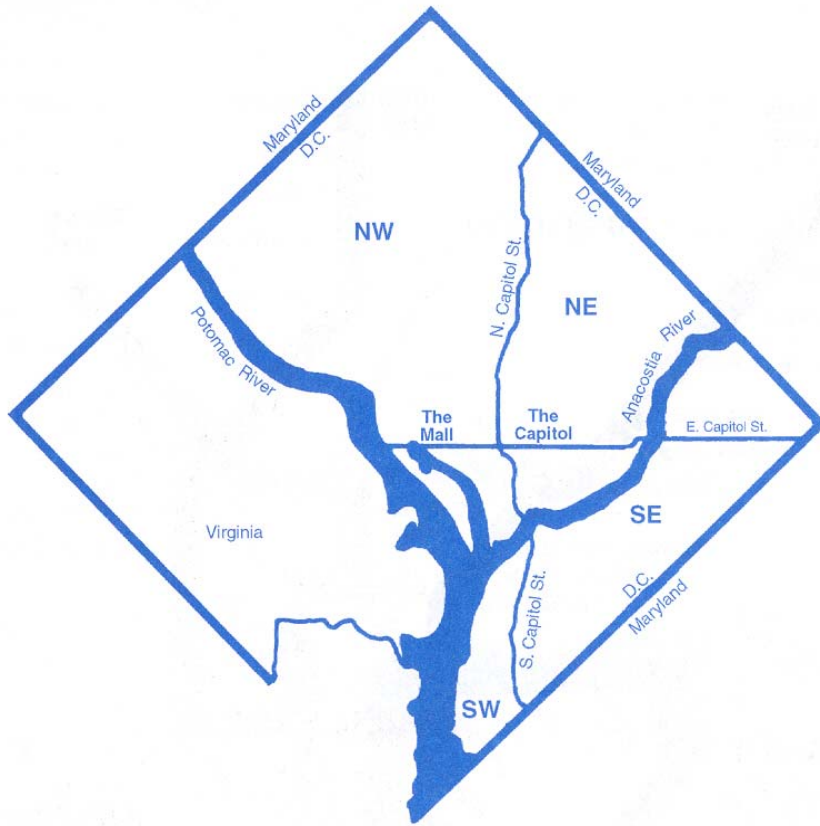
## World War II Memorial <http://www.nps.gov/nwwm>

The Washington Mall's newest memorial was dedicated to the men and women of World War II – American's Greatest Generation – on May 29, 2004. The memorial honors the 16 million who served in the armed forces of the U.S. during World War II and the more than 400,000 who died.

- Located on 17th Street between Constitution and Independence Avenues, NW
- 202-619-7222
- Open daily, 8:00 am - midnight
- Admission is free



# How to Get Around in Washington



## Layout of Washington

Washington, DC, is divided into four sections: Northwest, Northeast, Southwest, and Southeast. The U.S. Capitol, at the east end of the National Mall, is the hub of Washington's streets. The Capitol is situated at the intersection of East Capitol Street, South Capitol Street, North Capitol Street, and the Mall. The three streets and the Mall split the city into these four quadrants. The White House is the geographic center of Washington's original 10-mile square. All numbered streets run north and south, and lettered streets run east and west. Streets with state names, such as Maryland or Pennsylvania, run on the diagonal.

## Old Town Trolley Tour Services <http://www.historictours.com/washington>

Old Town Trolley Tours offers continuous trolley tours of Washington.

- 1-800-868-7482
- Hours: 9:00 am - 5:30 pm, daily during summer
- Trolleys stop by each stop every 30 minutes



## Tourmobile Sightseeing Services <http://www.tourmobile.com>

Tourmobile Sightseeing Services offers a variety of narrated shuttle tours to sights in and around Washington.

- 202-544-5100 or 1-888-868-7707
- Hours: 9:30 am - 4:30 pm, daily
- Tourmobiles stop by each stop every 20 minutes



## Washington Metro Bus <http://www.wmata.com>

An inexpensive and reliable means of transportation in Washington is the local bus service. For information on routes, schedules and fares, call 202-637-7000 or visit the Washington Metropolitan Area Transit Authority website. Hours of operation 24 hours a day.



## Washington Metro <http://www.wmata.com>

Washington has a subway system, called Metro, which can take you to all of its major tourist attractions for a very reasonable fare. Trains arrive in each Metro station every five minutes during rush hours (6:00 - 9:30 am, 3:00 - 6:30 pm) and every ten minutes the rest of the day. Monitor screens on the station platforms keep riders updated on the arrival of the next train. For information on routes, schedules, and fares, call 202-637-7000 or visit the website.

- Hours of operation: 5:30 am - midnight, Monday - Thursday; 5:30 am - 3:00 am, Friday; 7:00 am - 3:00 am, Saturday; and 7:00 am - midnight, Sunday.





# System Map

## Legend

- Red Line • Glenmont to Shady Grove
- Orange Line • New Carrollton to Vienna/Fairfax-GMU
- Blue Line • Franconia-Springfield to Largo Town Center
- Green Line • Branch Avenue to Greenbelt
- Yellow Line • Huntington to Mt Vernon Sq/7th St-Convention Center

Station in Service

Virginia Railway Express

Commuter Rail

Planned Station

Transfer Station

Parking



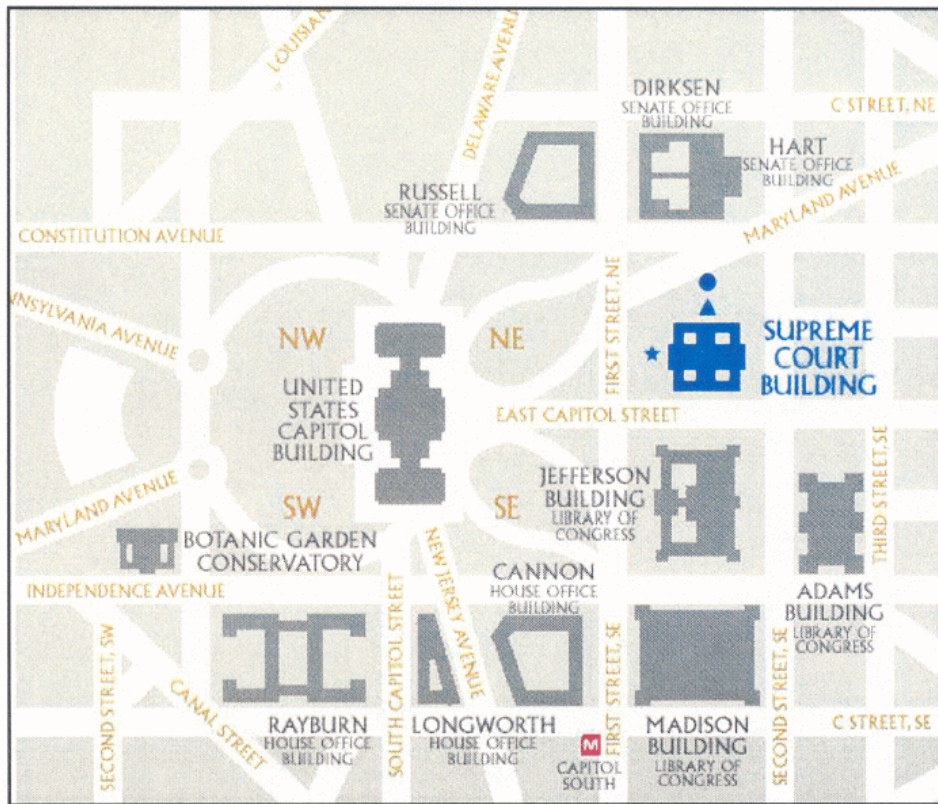
© 2014 WMATA  
WASHINGTON METRO POLICE  
METRO TRANSIT AUTHORITY

20140324

- No Smoking
- No Eating or Drinking
- No Animals (except service animals)
- No Audio or Video Devices (without earphones)
- No Litter or Spitting
- No Dangerous or Flammable Items



**A Map of Capitol Hill and the surround office buildings and streets:**



**Additional websites you may find helpful in planning your visit to Washington, DC:**

- <http://hutchison.senate.gov>
- <http://www.washington.org>
- <http://www.visitdc.com>
- <http://www.thedistrict.com>
- <http://www.dchomepage.net>

Last Updated 5/17/07

Senator Kay Bailey Hutchison  
284 Russell Senate Office Building  
Washington, DC 20510  
202-224-5922    202-224-0776 (fax)  
<http://hutchison.senate.gov>