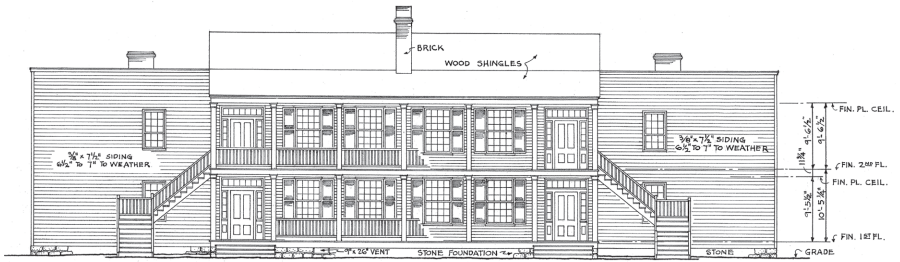
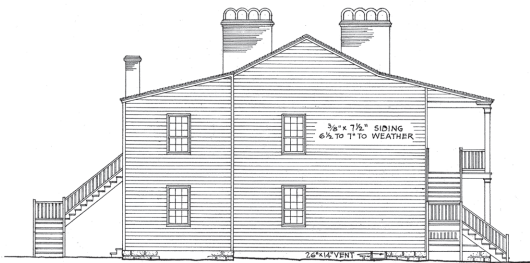




Directory of  
**National Park Service  
 Historians**  
**2006-2007**  
 Revised August 2006



FRONT (SOUTHEAST) ELEVATION



SIDE (SOUTHWEST) ELEVATION  
 SCALE  $\frac{1}{8}'' = 1'-0''$



OLD BEDLAM  
 FORT LARAMIE NATIONAL MONUMENT

## Fort Laramie National Historic Site

Established as a trading post in 1834 on a site between the North Platte and Laramie Rivers in present-day Wyoming, Fort Laramie played a pivotal role in the transformation of the American West. Over a period of 56 years, the fort served as a social and economic center for many tribes of Plains Indians, a resting place and supply center for wagon trains on the Oregon Trail bound for the Pacific Northwest, an Army garrison, a station on the Central route of the Pony Express, a critical point on the first transcontinental telegraph line, and a military operations center.

The wood-framed bachelor officers' quarters building known as "Old Bedlam" dates from 1849, the year the Gold Rush was at its height. Although relations between the Plains Indians and travelers along the Oregon Trail had been good for several years, they had deteriorated by 1849, one consequence of which was the establishment of an Army garrison at Fort Laramie and the assignment of troops along the Trail. The Fort Laramie (Horse Creek) Treaty of 1851 signed by the United States and several Plains Indian tribes helped ease the tension between the tribes and the travelers and troops, but that détente was short-lived. Within a couple years, skirmishes between soldiers and the Indian tribes had resumed. In 1876, Fort Laramie served as an anchor for Army military operations, communication, supply, and logistics during the Great Sioux War.

Other surviving military buildings at Fort Laramie include the Old Guard House and the Sutler's Store. Built in 1866, the sandstone Guard House contained living spaces and the fort jail. The adobe and sandstone Sutler's, or Post Trader's, Store (1850 and after) sold supplies beyond the bare necessities the soldiers had received from the Army. The Store also served the many wagon trains on the Trail.

The last garrison of the post marched out of Fort Laramie in 1890. In 1938, President Franklin D. Roosevelt proclaimed the fort a national monument because of its "great historic interest" as a relic of westward expansion. The Fort became a national historic site in 1960.

*The Historic American Buildings Survey recorded Fort Laramie soon after President Roosevelt proclaimed it a national monument. The documentation is available free of charge through the Library of Congress's Built in America web site ([http://memory.loc.gov/ammem/collections/habs\\_haer/](http://memory.loc.gov/ammem/collections/habs_haer/)).*

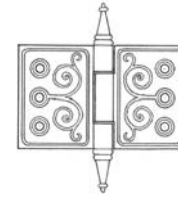
Front Cover: Old Bedlam (HABS No. WY-1), Wilfred G. Hill and Leslie E. Wilkie, delineators, 1939

Back Cover, top: Old Guard House (HABS No. WY-8), Paul W. Mowrey and Leslie E. Wilkie, delineators, 1940, 1942

Back Cover, bottom: Sutler's Store (HABS No. WY-2), Leslie E. Wilkie, delineator, 1940, 1942

Title Page: Detail of door hinge from Old Bedlam, Wilfred G. Hill and Leslie E. Wilkie, delineators, 1939

Directory of  
National Park Service  
Historians  
2006-2007  
Revised August 2006



Park History  
National Park Service  
Department of the Interior  
1849 C Street NW (2261)  
Washington, DC 20240

For other publications and information  
visit our web site at  
[www.cr.nps.gov/history](http://www.cr.nps.gov/history)

Dear colleagues:

Welcome to the 11th edition of the Directory of National Park Service Historians. This electronic edition includes more than 275 historians and other National Park Service staff who work so that people in parks and communities nationwide experience history in real places and appreciate the depth and diversity of our shared national heritage.

The year 2006 is a banner anniversary year for heritage stewardship. The National Park Service Organic Act turns 90 this month. The National Historic Preservation Act turns 40 in October. The Antiquities Act reached 100 on June 8. The Antiquities Act testifies to the vision of its creators, who saw to passage legislation that effectively represents national priorities and values with regard to heritage. Today, the Act protects a diverse array of natural and cultural treasures, from Devil's Tower in Wyoming, the nation's first national monument (1906), to the Northwestern Hawaiian Islands Marine National Monument in the Pacific Ocean, the nation's newest (2006). Information and commentaries on these and other National Park Service milestones are available from the Park History website ([www.cr.nps.gov/history](http://www.cr.nps.gov/history)).

I am very pleased to introduce this directory. My experience in the Heritage Documentation Programs demonstrated the value of researching, knowing, and recording our history. That program's move forward into the digital age would not have happened had it not been for the renewed interest in the origins and evolution of the Historic American Buildings Survey on occasion of its 70<sup>th</sup> anniversary in 2003. Caught in a storm of technological change, we let history be our guide. We were able to adapt to new technological realities and increase our effectiveness without compromising our original mission.

Past editions of this directory have helped immeasurably in fostering a sense of community and collegiality among historians and like-minded individuals across the National Park System. It is my hope that this edition will continue and strengthen that connection.

Martin Perschler  
Acting Chief Historian  
August 2006

The 2006-2007 directory lists National Park Service historians from the following categories:

- NPS employees officially classified as historians by inclusion in the GS-170 series.
- Persons not in the GS-170 series who (1) have either a graduate degree in history or a bachelor's degree in history with a record of graduate - level scholarship in publications or other media, and (2) are engaged primarily in historical research, historical interpretation, or cultural resource management.
- Employees with a PhD in history whose positions are not primarily history - related but who maintain currency in the profession and wish to be included.

The directory includes the following information on each person listed:

- Name (last, first, middle initial)
- Highest academic degree, granting school, year granted
- Areas of professional specialty (e.g., U.S. military, African American, CRM)
- Position title, park or office, mailing address, telephone number, fax number, e-mail address (where available)

Please submit any changes to: Park History, National Park Service, 1849 C Street NW (2261), Washington, DC 20240 or fax 202 -371-2229. Special thanks to Jennifer Perunko for the design and layout of this directory.

---

**Ahlgren, Carol**

MA, University of Wisconsin-Madison, 1987

*Historic highways, post-WWII resources, cultural landscapes*

Architectural Historian

Midwest Regional Office

National Park Service

601 Riverfront Drive

Omaha, NE 68102-4226

402-661-1912; 402-661-1982 (fax); carol\_ahlgren@nps.gov

**Albee, Margaret A.**

MA, Boston University, 1982

*Historic architecture, historic preservation, historic architectural materials*

Manager, Historic Architecture Program

Northeast Regional Office

National Park Service

115 John Street, 4th Floor

Lowell, MA 08152-1195

978-970-5131; 978-970-5121 (fax); peggy\_albee@nps.gov

**Alexander, Charles T.**

MA, University of Maryland, 1988

*Civil War, 18th/19th-century U.S. military and social*

Historian

Antietam National Battlefield

Box 158

Sharpsburg, MD 21782

301-432-8674; 301-432-4590 (fax); ted\_alexander@nps.gov

**Allen, Stacy D.**

BGS, University of Kansas, 1983

*U.S. military, Civil War, CRM*

Historian

Shiloh National Military Park

1055 Pittsburg Landing Road

Shiloh, TN 38376

901-689-5275; 901-689-5450 (fax); stacy\_allen@nps.gov

**Andrus, Patrick W.**

MA, Louisiana State University, 1979

*Southern U.S., antebellum*

Historian, National Register of Historic Places

National Park Service

1849 C Street, NW (2280)

Washington, DC 20240

202-354-2218; 202-371-2229 (fax); patrick\_andrus@nps.gov

---

**Anfinson, John O.**

PhD, University of Minnesota, 1987

*Mississippi River, environmental, public history*

Cultural Resource Specialist

Mississippi National River and Recreation Area

111 East Kellogg Boulevard

St. Paul, MN 55101

651-290-3030 x285; 651-290-3214 (fax); john\_anfinson@nps.gov

**Arrington, Todd**

MA, Shippensburg University, 1999

*U.S. military and political history, land policy*

Historian

Homestead National Monument of America

8523 West State Highway 4

Beatrice, NE 68310-6743

402-223-3514; 402-228-4231 (fax); todd\_arrington@nps.gov

**Baker, Lea F.**

MA, University of Arkansas-Little Rock, 2003

*Arkansas, 19th century, women*

Education Specialist

Little Rock Central High School National Historic Site

700 West Capitol Avenue, Suite 3527

Little Rock, AR 72201

501-374-3067; 501-301-7762 (fax); lea\_baker@nps.gov

**Baron, Kristin L.**

MS, Columbia University, 1990

*West Coast military architecture*

Architectural Historian

Golden Gate National Recreation Area

Building No. 201, Fort Mason

San Francisco, CA 94123

415-561-4484; 415-561-4474 (fax); kristin\_baron@nps.gov

**Barrett, John R.**

MA, Savannah College of Art and Design, 1989

*CRM, architecture, preservation planning*

Park Planner

Southeast Regional Office

National Park Service

Atlanta Federal Center, 1924 Building

100 Alabama Street, SW

Atlanta, GA 30303

404-562-3124 x637; 404-562-3257 (fax); john\_barrett@nps.gov

---

**Beall, Edson H.**

MCP, University of Maryland, 1990

*Records management*

Historian, National Register of Historic Places

National Park Service

1849 C Street, NW (2280)

Washington, DC 20240

202-354-2255; 202-371-2229 (fax); edson\_beall@nps.gov

**Bearss, Edwin C.**

MA, Indiana University, 1955

*Civil War, Reconstruction, World War II*

Historian Emeritus, Park History

National Park Service

1849 C Street, NW (2261)

Washington, DC 20240

202-354-2240; 202-371-2229 (fax)

**Beckstead, Douglas S.**

MA, University of Utah, 1992

*Legal, Alaska, western U.S.*

Historian

Gates of the Arctic National Park and Preserve/Yukon-Charley Rivers

National Preserve

4175 Geist Road

Fairbanks, AK 99709-3420

907-455-0630; 907-455-0601 (fax); doug\_beckstead@nps.gov

**Binkley, Cameron**

MA, San Francisco State University, 2000

*Conservation, National Park Service, women*

Historian

Southeast Regional Office

National Park Service

Atlanta Federal Center, 1924 Building

100 Alabama Street, SW

Atlanta, GA 30303

404-562-3117 x616; 404-562-3202 (fax); cameron\_binkley@nps.gov

**Blackburn, Marc K.**

PhD, Temple University, 1992

*U.S. military, U.S. diplomatic, Civil War*

Interpretive Program Specialist

Nez Perce National Historical Park

39063 U.S. Highway 95

Spalding, ID 83540

208-843-7026; 208-843-7003 (fax); marc\_blackburn@nps.gov

---

**Blankenship, Jr., James H.**

BA, Virginia Commonwealth University, 1978

*U.S. military, Civil War*

Historian and Curator

Petersburg National Battlefield

1539 Hickory Hill Road

Petersburg, VA 23803

804-732-0171 x306; 804-862-7943 (fax); james\_blankenship@nps.gov

**Blatt, Martin H.**

PhD, Boston University, 1983

*Public, labor, social reform*

Chief, Cultural Resources

Boston National Historical Park

Charlestown Navy Yard

Boston, MA 02129

617-242-5648; 617-241-8650 (fax); marty\_blatt@nps.gov

**Bleakley, Geoffrey T.**

PhD, Washington State University, 1996

*Alaska, polar, mining*

Historian

Wrangell-St. Elias Park and Preserve

P.O. Box 439

Copper Center, AK 99573

907-822-7406; 907-822-7259 (fax); geoff\_bleakley@nps.gov

**Boland, Beth M.**

BA, Mount Holyoke College, 1971

*Historic preservation, education*

Historian

Heritage Education Services

National Park Service

1849 C Street, NW (2258)

Washington, DC 20240

202-354-2238; 202-371-1616 (fax); beth\_boland@nps.gov

**Bolling, Michael R.**

BS, Austin Peay State University, 1989

*U.S. Lighthouse Service, U.S. Life-Saving Service, early colonial*

Historian

Fort Raleigh National Historic Site

1401 National Park Drive

Manteo, NC 27954

252-473-5772; 252-473-2595 (fax); rob\_bolling@nps.gov

---

**Branson, John B.**

BS, Boston University, 1969

*Southwestern Alaska, oral history, interpretation*

Historian

Katmai and Lake Clark National Parks

General Delivery

Port Alsworth, AK 99653

907-781-2218; john\_branson@nps.gov

**Brown, Sharon A.**

PhD, Saint Louis University, 1983

*Interpretive planning*

Outdoor Recreation Planner

Fort Vancouver National Historic Site

612 East Reserve Street

Vancouver, WA 98661-3897

360-816-6233; 360-696-7657 (fax); sharon\_brown@nps.gov

**Burke, William P.**

MA, College of William and Mary, 1989

*American Revolution, historical archeology, CRM*

Branch Chief for Cultural Resources

Cape Cod National Seashore

99 Marconi Site Road

Wellfleet, MA 02667

508-349-3785; 508-349-9052 (fax); bill\_burke@nps.gov

**Burns, John A.**

BA, Pennsylvania State University, 1972

*American and modern architecture, construction history, documentation technology*

Chief Appeals Officer

Historic Preservation Tax Incentives Program

National Park Service

1849 C Street, NW (2201)

Washington, DC 20240

202-354-2118; 202-371-6485 (fax); john\_a\_burns@nps.gov

**Burrell, Donald**

BS, Jackson State University, 1996

*African American, Civil War*

Civil Rights Historian

Office of Information and Telecommunication Center

National Park Service

1849 C Street, NW

Washington, DC 20240

202-371-5164; 202-354-1427 (fax); donald\_burrell@nps.gov

---

**Butowsky, Harry A.**

PhD, University of Illinois-Urbana, 1975

*U.S. military, American space program*

Historian, Park History

National Park Service

1849 C Street, NW (2261)

Washington, DC 20240

202-354-2261; 202-371-2229 (fax); harry\_butowsky@nps.gov

**Calkins, Christopher M.**

BS, Longwood College, 1981

*Civil War, historic preservation, 19th-century decorative arts, WWII*

Chief of Interpretation

Petersburg National Battlefield

1539 Hickory Hill Road

Petersburg, VA 23803

804-732-6092 x201; 804-732-0835 (fax); chris\_calkins@nps.gov

**Capps, Michael**

BA, Missouri Southern State College, 1982

*CRM, 19th-century U.S.*

Chief, Interpretation and Resource Management

Lincoln Boyhood National Memorial

P.O. Box 1816

Lincoln City, IN 47552

812-937-4541; 812-937-9929 (fax); mike\_capps@nps.gov

**Carlson, Stephen P.**

MA, Purdue University, 1972

*CRM, U.S. naval, historical editing*

Preservation Specialist

Boston National Historical Park

Charlestown Navy Yard

Boston, MA 02129

617-242-5680; 617-241-8650 (fax); steve\_carlson@nps.gov

**Carson, Howard P.**

MA, Mary Washington College, 1989

*American Revolution, colonial, military, naval*

Superintendent

Overmountain Victory National Historic Trail

2635 Park Road

Blacksburg, SC 29702

864-936-3477; 864-936-3477 (fax); paul\_carson@nps.gov

**Cave, Kent R.**

BA, Appalachian State University, 1974

*Southern U.S., southern Appalachia*

Interpretive Media Branch Chief

Great Smoky Mountains National Park

107 Park Headquarters Road

Gatlinburg, TN 37738

865-436-1262; 865-436-1307 (fax); kent\_cave@nps.gov

**Chamberlain, Andrew B.**

BA, Montclair State College, 1972

*18th/19th-century U.S. material culture and folklife*

Curator

Harpers Ferry Center

National Park Service

P.O. Box 50

Harpers Ferry, WV 25425

304-535-6117; 304-535-6086 (fax); andy\_chamberlain@nps.gov

**Chappell, Gordon S.**

MA, University of Arizona, 1965

*Western U.S., military, railroads*

Regional Historian

Pacific West Regional Office

National Park Service

1111 Jackson Street, Suite 700

Oakland, CA 94607

510-817-1394; 510-817-1484 (fax); gordon\_s\_chappell@nps.gov

**Christianson, Justine A.**

MA, George Washington University, 2003

*Women, 19th-century U.S., historic preservation*

Historian, Heritage Documentation Programs

National Park Service

1849 C Street, NW (2270)

Washington, DC 20240

202-354-2183; 202-371-6473 (fax); justine\_christianson@nps.gov

**Cika, Rab**

MA, University of West Florida, 1983

*19th-century U.S., 20th-century U.S. political*

Ranger

Delaware Water Gap National Recreation Area

Bushkill, PA 18324

570-588-2429; 570-588-2780 (fax); rab\_cika@nps.gov



---

**Cissel, William F.**

BA, Brigham Young University, 1980  
*Danish colonial, Danish military, Danish slave trade*  
Cultural Resource Manager  
St. Croix National Park Group  
2100 Church Street, No. 100  
Christiansted, VI 00820-4611  
340-773-1460 x32; 340-778-8460 (fax); william\_cissel@nps.gov

**Clemens, Janet F.**

BA, University of Alaska-Anchorage, 1989  
*Alaska, Historic preservation*  
Historian  
Alaska Regional Office  
National Park Service  
240 West 5th Avenue  
Anchorage, AK 99501  
907-644-3461; 907-644-3811 (fax); janet\_clemens@nps.gov

**Cockrell, Ron**

MA, Creighton University, 1982  
*20th-century U.S., National Park Service, CRM*  
Senior Historian  
Midwest Regional Office  
National Park Service  
601 Riverfront Drive  
Omaha, NE 68102-4226  
402-661-1922; 402-661-1982 (fax); ron\_cockrell@nps.gov

**Cody, Gregory L.**

MA, University of Colorado, 1979  
*19th/20th-century U.S. social*  
Technical Specialist for Cultural Resources  
Denver Service Center  
National Park Service  
P.O. Box 25287  
Denver, CO 80225-0287  
303-969-2269; 303-969-2736 (fax); greg\_cody@nps.gov

**Coffey, Brian F.**

MA, Loyola University of Chicago, 1998  
*Industrial history, post-World War II*  
Historian  
Southeast Regional Office  
National Park Service  
Atlanta Federal Center, 1924 Building  
100 Alabama Street, SW  
Atlanta, GA 30303  
404-562-3117 x642; 404-562-3202 (fax); brian\_coffey@nps.gov

---

**Colton, Richard T.**

MA, University of Massachusetts, 2000  
Historian  
Springfield Armory National Historic Site  
One Armory Square  
Springfield, MA 01105-1299  
413-734-6477 x223; 413-747-8062 (fax); richard\_colton@nps.gov

**Cook, Jody**

MA, University of Georgia, 1976  
*Historic preservation, U.S. Army aviation, NACA/NASA*  
Historian  
Southeast Regional Office  
National Park Service  
Atlanta Federal Center, 1924 Building  
100 Alabama Street, SW  
Atlanta, GA 30303  
404-562-3117 x515; 404-562-3244 (fax); jody\_cook@nps.gov

**Cook, Linda A.**

MS, Columbia University, 1989  
*Preservation planning, Aleutian Islands, vernacular architecture*  
Superintendent  
Weir Farm National Historic Site  
735 Nod Hill Road  
Wilton, CT 06897-1309  
203-834-1896 x23; 203-834-2421 (fax); linda\_cook@nps.gov

**Cucurullo, Francis J.**

MA, University of Connecticut, 1976  
*19th/20th-century U.S. history*  
Supervisory Ranger  
Arlington House, The Robert E. Lee Memorial  
George Washington Memorial Parkway  
McLean, VA 22101  
703-235-1534; 703-235-1546 (fax); frank\_cucurullo@nps.gov

**Davidson, Lisa P.**

PhD, George Washington University, 2003  
*20th-century commercial architecture, vernacular architecture, urban history*  
Historian, Heritage Documentation Programs  
National Park Service  
1849 C Street, NW (2270)  
Washington, DC 20240  
202-354-2179; 202-371-6473 (fax); lisa\_davidson@nps.gov

---

**Davis, Timothy M.**

PhD, University of Texas-Austin, 1997  
*Cultural landscapes, park roads, parkways*  
Historian, Park Historic Structures and Cultural Landscapes  
National Park Service  
1849 C Street, NW (2260)  
Washington, DC 20240  
202-354-2091; 202-371-2439 (fax); tim\_davis@nps.gov

**DeGraaf, Anne M.**

MA, University of Delaware, 1990  
*Collections care and management*  
Chief of Interpretation  
Morristown National Historical Park  
Washington Place  
Morristown, NJ 07960-4299  
908-766-8217; 973-285-5021 (fax); anne\_degraaf@nps.gov

**DeGraaf, Leonard**

MA, Rutgers University, 1986  
*Early 20th-century U.S., business, technology*  
Archivist  
Edison National Historic Site  
Main Street and Lakeside Avenue  
West Orange, NJ 07052-5515  
973-736-0550; 973-736-8496 (fax); leonard\_degraaf@nps.gov

**DeGraff, Joan M.**

MA, University of South Dakota, 1987  
*CRM, cultural landscapes*  
Cultural Resource Specialist  
Mojave National Preserve  
222 East Main Street  
Barstow, CA 92311  
760-255-8820; 760-255-8809 (fax); joan\_degraff@nps.gov

**Delmar, Frances K.**

MA, University of Delaware, 1973  
*Underground Railroad, meanings of freedom*  
Interpretive Program Specialist  
Independence National Historical Park  
143 South Third Street  
Philadelphia, PA 19106  
215-597-7128; 215-861-4950 (fax); frances\_delmar@nps.gov

---

**Depew, Diane K.**

MA, Texas A&M University, 1982  
*U.S. military, 18th/19th-century U.S.*  
Historian, Yorktown District  
Colonial National Historical Park  
P.O. Box 210  
Yorktown, VA 23690  
757-898-3400; 757-898-6346 (fax); diane\_k\_depew@nps.gov

**Derousie, Anne M.**

MA, State University of New York-Binghamton, 1998  
*U.S. women, antebellum and rural U.S.*  
Historian  
Women's Rights National Historical Park  
136 Fall Street  
Seneca Falls, NY 13148  
315-568-2179; 315-568-2141 (fax); anne\_derousie@nps.gov

**Derry, Robert T.**

MA, Kent State University, 1968  
*19th-century U.S., modern Europe*  
Ranger  
Minute Man National Historical Park  
174 Liberty Street  
Concord, MA 07142-1705  
978-318-7826; 978-318-7800 (fax); bob\_derry@nps.gov

**Dickey, Elizabeth A.M.**

MS, University of Oregon, 2002  
*Zinc Grave Markers, cemeteries, historic preservation*  
Architectural Historian  
Midwest Regional Office  
National Park Service  
601 Riverfront Drive  
Omaha, NE 68102-4226  
402-661-1926; 402-661-1982 (fax); elizabeth\_dickey@nps.gov

**Diethorn, Karie A.**

MA, University of Delaware, 1984  
*Colonial and Federal periods, decorative arts, museum management*  
Supervisory Curator  
Independence National Historical Park  
143 South Third Street  
Philadelphia, PA 19106  
215-597-9373; 215-597-5556 (fax); karie\_diethorn@nps.gov

---

**Doerner, John A.**

BA, Minot State University, 1990  
*Frontier military, Plains Indian*  
Historian  
Little Bighorn Battlefield National Monument  
P.O. Box 39  
Crow Agency, MT 59022-0039  
406-638-2621 x131; 406-638-2623 (fax); john\_doerner@nps.gov

**Duffy, Henry J.**

PhD, Rutgers University, 2001  
*Art, architecture and culture 19th century*  
Curator  
Saint-Gaudens National Historic Site  
139 Saint-Gaudens Road  
Cornish, NH 03745  
603-675-2175 x112; 603-675-2701 (fax); henry\_duffy@nps.gov

**Dunkerly, Robert M.**

MA, Middle Tennessee State University, 1998  
*CRM, historic preservation, U.S. to 1877*  
Park Ranger and Historic Weapons Safety Officer  
Kings Mountain National Military Park  
2625 Park Road  
Blacksburg, SC 29702  
864-936-7921; 864-936-9897 (fax); bert\_dunkerly@nps.gov

**Eckard, Chris G.**

BA, Washington State University, 1986  
*U.S. military and naval, lifesaving and lighthouse services*  
Chief of Interpretation  
Ulysses S. Grant National Historic Site  
7400 Grant Road  
St. Louis, MO 63123-1801  
314-842-1867; 314-842-1659 (fax); chris\_eckard@nps.gov

**Eckberg, Scott B.**

BA, University of Minnesota, 1977  
*U.S. military, western U.S.*  
Idaho Unit Manager  
Nez Perce National Historical Park  
39063 U.S. Highway 95  
Spalding, ID 83540  
208-843-7051; 208-843-7006 (fax); scott\_eckberg@nps.gov

---

**Engle, Reed L.**

MA, Lehigh University, 1979  
*Cultural landscapes, U.S. social*  
Cultural Resource Specialist  
Shenandoah National Park  
3655 U.S. Highway 211 East  
Luray, VA 22835-9051  
540-999-3495; 540-999-3693 (fax); reed\_engle@nps.gov

**Evenson, Rudy**

PhD, University of Oregon, 1998  
*U.S. 1877-1929, political and economic*  
Chief of Special Park Uses  
Golden Gate National Recreation Area  
Fort Mason, Building 201  
San Francisco, CA 94123  
415-561-4301; 415-561-4305 (fax); rudy\_evenson@nps.gov

**Everett, Jeffrey C.**

MA, University of Delaware, 1999  
*Vernacular architecture, cultural geography, land conservation*  
Historian and Cultural Landscapes Coordinator  
National Capital Region  
National Park Service  
1100 Ohio Drive, SW  
Washington, DC 20242  
202-354-1828; 202-371-1354 (fax); jeff\_everett@nps.gov

**Fanelli, Doris D.**

PhD, Indiana University, 1983  
*Folklore, colonial and Federal periods, historic preservation*  
Chief, Division of Cultural Resources Management  
Independence National Historical Park  
143 South Third Street  
Philadelphia, PA 19106  
215-597-7087; 215-597-5556 (fax); doris\_fanelli@nps.gov

**Fanning, Kay (Kathryn)**

PhD, University of Virginia, 1996  
*American architectural history, memorials, cultural landscapes*  
Landscape Historian  
National Capital Region  
National Park Service  
1100 Ohio Drive, SW  
Washington, DC 20242  
202-354-1825; 202-371-1354 (fax); kay\_fanning@nps.gov

---

**Faragasso, Frank T.**

PhD, City University of New York, 1981  
*U.S. social, African-American, 19th-century intellectual*  
Historian  
National Capital Region  
National Park Service  
1900 Anacostia Drive, SE  
Washington, DC 20020  
202-692-6038; 202-690-0862 (fax); frank\_faragasso@nps.gov

**Feller, Laura J.**

MA, George Washington University, 1983  
*Pueblos, CRM*  
Historian, Park History  
National Park Service  
1849 C Street, NW (2261)  
Washington, DC 20240  
202-354-2219; 202-371-2229 (fax); laura\_feller@nps.gov

**Felton, Vickie J.**

MA, University of Mississippi, 2000  
*American colonial, Abraham Lincoln*  
Ranger  
Ford's Theatre National Historic Site  
517 10th Street, NW  
Washington, DC 20004  
202-426-6924; 202-426-1845 (fax); vickie\_felton@nps.gov

**Flores, Milagros**

MA, University of Navarre, 1982  
*Spanish colonial fortifications, lighthouses, CRM, World Heritage*  
Historian and Manager, Museum Program  
Fort Raleigh National Historic Site  
1401 National Park Drive  
Manteo, NC 27954  
252-473-4018; 252-473-1329 (fax); milagros\_flores@nps.gov

**Foppes, Ellen "Kathy"**

PhD, University of New Mexico  
*Historic Preservation, US history, Colonial Latin America*  
Chief, Cultural Resources Management  
Gateway National Recreation Area  
210 New York Avenue  
Staten Island, NY 10305  
718-354-4552; 718-354-4550 (fax); kathy\_foppes@nps.gov

---

**Ford, Christine M.**

MA, University of California-Riverside, 1983  
*Collections care and management*  
Curator  
Grant-Kohrs Ranch National Historic Site  
P.O. Box 790  
Deer Lodge, MT 59722  
406-846-2070; 406-846-3962 (fax); chris\_ford@nps.gov

**Foster, Kevin J.**

MA, East Carolina University, 1991  
*Maritime, technology, U.S. military*  
Chief, Maritime Heritage Program  
National Park Service  
1849 C Street, NW (2261)  
Washington, DC 20240  
202-354-2260; 202-371-2229 (fax); kevin\_foster@nps.gov

**Franklin Weekley, Rachel**

PhD, University of Missouri-Columbia, 2004  
*Colonial North America, civil rights, CRM*  
Architectural Historian  
Midwest Regional Office  
National Park Service  
601 Riverfront Drive  
Omaha, NE 68102-4226  
402-661-1928; 402-661-1982 (fax); rachel\_franklin-weekley@nps.gov

**Frayler, John M.**

BA, Queens College, 1972  
*Maritime, U.S. military, CRM*  
Historian  
Salem Maritime National Historic Site  
174 Derby Street  
Salem, MA 01970  
978-740-1691; 978-740-1685 (fax); john\_frayler@nps.gov

**Frey, Rosie**

MA, University of South Dakota, 1986  
*U.S. frontier women, U.S. military, American Indian*  
Ranger  
Fort Scott National Historic Site  
P.O. Box 918  
Fort Scott, KS 66701-1471  
620-223-0310; 620-223-0188 (fax); rosie\_frey@nps.gov

---

**Fuerst, David N.**

MA, Southern Illinois University, 1986

*Central Appalachian pre-history, CRM*

New River Gorge National River

Glen Jean, WV 25846

304- 465-6530; 304- 465-0591 (fax); david\_fuerst@nps.gov

**Futral, Frank**

MA, University of Texas-Austin, 1999

*18th c. American art, material culture, history of interior decoration*

Curator

Roosevelt - Vanderbilt National Historic Sites

4097 Albany Post Road

Hyde Park, NY 12538

845-229-1948; 845-229-0739 (fax); frank\_futral@nps.gov

**Gall, Lawrence D.**

MA, Harvard University, 1972

*U.S. diplomatic, Russian, historic preservation*

Acting Executive Director

John H. Chafee Blackstone River Valley National Heritage Corridor

One Depot Square

Woonsocket, RI 02895

401 -762- 0250 x17; 401 -762-0530 (fax); larry\_gall@nps.gov

**Galonska, Juliet L.**

MA, Oklahoma State University, 1994

*Western U.S.*

Site Manager

Frederick Douglass National Historic Site and Fort Circle Parks

1411 W Street, SE

Washington, DC 20020

202 -426-5961; 202 -426-0880 (fax); julie\_galonska@nps.gov

**Garate, Donald T.**

BS, University of Nevada- Reno, 1972

*Spanish colonial, Juan Bautista de Anza*

Historian and Chief of Interpretation

Tumacacori National Historical Park

P.O. Box 67

Tumacacori, AZ 85640

520-398-2341 x25; 520-398-9271 (fax); don\_garate@nps.gov

---

**Gaumer, Gerald G.**

MA, Pennsylvania State University, 1980

*19th-century U.S., U.S. military*

Public Affairs Specialist

National Park Service

1849 C Street, NW

Washington, DC 20240

202- 208-4989; 202 -219-0910 (fax); gerry\_gaumer@nps.gov

**Gerdes, Marti**

MS, University of Oregon, 2004

*Cultural landscapes, trails, technology, architecture*

Historian

Southeast Regional Office

National Park Service

Atlanta Federal Center, 1924 Building

100 Alabama Street, SW

Atlanta, GA 30303

404- 562 -3117 x606; 404- 562 -3202 (fax); marti\_gerdes@nps.gov

**Givens, Peter S.**

MA, Western Carolina University, 1978

*Civil War, North Carolina, southern Appalachia*

Interpretive Program Specialist

Blue Ridge Parkway

2657 Mountain View Road

Vinton, VA 24179

540 -767-2492 x16; 540 -767-2499 (fax); peter\_givens@nps.gov

**Gomez, Arthur R.**

PhD, University of New Mexico, 1994

*Spanish colonial, western U.S., environmental*

Historian, History Program

Intermountain Regional Office

National Park Service

P.O. Box 728

Santa Fe, NM 87504-0728

505-988-6784; 505-988-6876 (fax); art\_gomez@nps.gov

**Good, Timothy S.**

MA, University of Durham, 1993

*Abraham Lincoln, Civil War*

Management Assistant

Midwest Regional Office

National Park Service

601 Riverfront Drive

Omaha, NE 68102 -4226

402- 661-1696; 402- 661-1983 (fax); timothy\_good@nps.gov

---

**Gossett, Tanya, M.**

MA, Cornell University, 1993  
*Historic preservation planning, CRM*  
Preservation Planner, American Battlefield Protection Program  
National Park Service  
1849 C Street, NW  
Washington, DC 20240  
202-354-2019; 202-371-1616 (fax); tanya\_gossett@nps.gov

**Graves, Mary L.**

BA, Southwest State University, 1975  
*CRM*  
Cultural Resource Specialist  
Voyageurs National Park  
3131 Highway 53 South  
International Falls, MN 56649-8904  
218-283-9821; 218-285-7407 (fax); mary\_graves@nps.gov

**Greene, Jerome A.**

MA, University of South Dakota, 1969  
*American Indian, frontier military, CRM*  
Curator  
Harpers Ferry Center  
National Park Service  
P.O. Box 25287  
Denver, CO 80225-0287  
303-969-2363; 303-987-6748 (fax); jerry\_greene@nps.gov

**Griffin, Kristen**

MA, Western Washington University, 1984  
*Alaska, historic preservation, CRM*  
Historian  
Sitka National Historical Park  
103 Monastery Street  
Sitka, AK 99835  
907-747-0132; 907-747-5938 (fax); kristen\_griffin@nps.gov

**Grimmer, Anne E.**

MA, George Washington University, 1969  
*Architecture, building material preservation*  
Architectural Historian, Heritage Preservation Services  
National Park Service  
1849 C Street, NW (2255)  
Washington, DC 20240  
202-354-2028; 202-371-1616 (fax); anne\_grimmer@nps.gov

---

**Gurcke, Karl**

MA, University of Idaho, 1983  
*Bricks and brickmaking, industrial archeology, historical archeology*  
Historian  
Klondike Gold Rush National Historical Park  
P.O. Box 517  
Skagway, AK 99840  
907-983-9214; 907-983-9249 (fax); karl\_gurcke@nps.gov

**Gurulé, Jerry L.**

PhD, University of New Mexico, 1997  
*Spanish, Spanish colonial, maritime*  
Historian and Linguist  
Intermountain Spanish Colonial Research Center  
National Park Service  
University of New Mexico  
Zimmerman Library  
Albuquerque, NM 87131  
505-346-2890; 505-346-2879 (fax); jerry\_gurule@nps.gov

**Hall, Jennifer**

MS, University of Pennsylvania, 2002  
*Historic preservation*  
Collections Manager, Heritage Documentation Programs  
National Park Service  
1849 C Street, NW (2270)  
Washington, DC 20240  
202-354-2174; 202-371-6473 (fax); jennifer\_l\_hall@nps.gov

**Haller, Stephen A.**

BA, University of Rochester, 1971  
*U.S. military, maritime*  
Historian  
Golden Gate National Recreation Area  
Fort Mason, Building 201  
San Francisco, CA 94123  
415-561-4815; 415-561-4474 (fax); stephen\_haller@nps.gov

**Hammell, Rebecca J.**

MA, University of Delaware, 1983  
*Childhood, material culture, decorative arts*  
Curator  
Saratoga National Historical Park  
648 Route 32  
Stillwater, NY 12170  
518-664-9821 x221; 518-664-3349 (fax); becky\_hammell@nps.gov

---

**Harrison, Kathleen G.**

MA, University of Pittsburgh, 1975  
*U.S. military and political, CRM*

Senior Historian  
Gettysburg National Military Park  
97 Taneytown Road  
Gettysburg, PA 17325  
717-338-1510; 717-334-8062 (fax); kathy\_harrison@nps.gov

**Hartwig, D. Scott**

BS, University of Wyoming, 1978  
*Civil War (military operations)*

Supervisory Historian  
Gettysburg National Military Park  
97 Taneytown Road  
Gettysburg, PA 17325  
717-334-1124 x428; 717-334-1997 (fax); scott\_hartwig@nps.gov

**Hatcher, Richard W. III**

BA, Virginia Commonwealth University, 1973  
*U.S. military, Civil War*

Historian  
Fort Sumter National Monument and Charles Pinckney National Historic Site  
214 Middle Street  
Sullivan's Island, SC 29482  
803-883-3123; rick\_hatcher@nps.gov

**Hawke, Paul H.**

MA, Georgia State University, 1992  
*U.S. military, U.S. frontier, CRM*

Chief, American Battlefield Protection Program  
National Park Service  
1849 C Street, NW  
Washington, DC 20240  
202-354-2023; 202-371-1616 (fax); paul\_hawke@nps.gov

**Hay, Duncan E.**

PhD, University of Delaware, 1986  
*Industry, material culture, CRM*

Historian  
Northeast Regional Office  
National Park Service  
15 State Street  
Boston, MA 02109-3572  
617-223-5056; 617-223-5164 (fax); duncan\_hay@nps.gov

---

**Heald, Sarah H.**

MA, University of Delaware, 1985  
*U.S. social, material culture, historic house interiors*

Curator  
Harpers Ferry Center  
National Park Service  
P.O. Box 50  
Harpers Ferry, WV 25425  
304-535-6133; 304-535-6806 (fax); sarah\_heald@nps.gov

**Hebblethwaite, Frank F.**

BA, Humboldt State University, 1973  
*Abraham Lincoln, 18th/19th-century iron furnaces, CRM*

Ranger  
Hopewell Furnace National Historic Site  
2 Mark Bird Lane  
Elverson, PA 19520  
610-582-8773 x229; 610-582-2768 (fax); frank\_hebblethwaite@nps.gov

**Hegeman, Carol A.**

BA, Gettysburg College, 1973  
*20th-century U.S.*

Supervisory Historian  
Eisenhower National Historic Site  
250 Eisenhower Farm Lane  
Gettysburg, PA 17325  
717-338-9114; 717-338-0821 (fax); carol\_hegeman@nps.gov

**Henry, Patricia**

MA, George Mason University, 1986  
*National historic landmarks*

Historian, National Historic Landmarks  
National Park Service  
1849 C Street, NW (2280)  
Washington, DC 20240  
202-354-2216; 202-371-2229 (fax); patty\_henry@nps.gov

**Herrin, Dean A.**

PhD, University of Delaware, 1991  
*Technology, industrialization*

National Park Service Coordinator  
Catoctin Center for Regional Studies  
Frederick Community College  
Frederick, MD 21702  
301-624-2773; 301-846-2498 (fax); dherrin@fcc.cc.md.us

---

**Hill, James R. III**

MA, University of South Carolina, 1992  
*Agricultural and industrial architecture, vernacular landscapes, colonial*  
Midwest Regional Coordinator, National Underground Railroad Network  
to Freedom  
Midwest Regional Office  
National Park Service  
601 Riverfront Drive  
Omaha, NE 68102 -4226  
402-661-1590; 402-661-1591 (fax); james\_hill@nps.gov

**Hitchcock, Susan L.**

MA, University of Georgia, 1997  
*Colonial Revival gardens, southern garden history*  
Landscape Historian  
Southeast Regional Office  
National Park Service  
Atlanta Federal Center, 1924 Building  
100 Alabama Street, SW  
Atlanta, GA 30303  
404-562-3117 x605; 404-562-3202 (fax); susan\_hitchcock@nps.gov

**Honious, Ann C.**

MA, George Washington University, 1994  
*African-American, early aviation, CRM*  
Chief, Education and Resources Management  
Dayton Aviation Heritage National Historical Park  
P.O. Box 9280, Wright Brothers Station  
Dayton, OH 45409  
937-225-7705; 937-222-4512 (fax); ann\_honious@nps.gov

**Houghton, Janet R.**

MA, University of Delaware, 1975  
*CRM, material culture, decorative arts*  
Curator  
Marsh-Billings-Rockefeller National Historical Park  
54 Elm Street  
Woodstock, VT 05091  
802-457-3368 x12; janet\_houghton@nps.gov

**Houston, Bonnie S.**

MA, Arizona State University, 2000  
*Alaska, vernacular architecture, historic preservation*  
Architectural Historian  
Alaska Regional Office  
National Park Service  
240 West 5th Avenue  
Anchorage, AK 99501  
907-644-3467; 907-644-3811 (fax); bonnie\_houston@nps.gov

---

**Houting, Scott P.**

MA, Western Michigan University, 1992  
*U.S. military, museum studies*  
Museum Specialist  
Valley Forge National Historical Park  
1400 North Outer Line Drive  
King of Prussia, PA 19406  
610-783-1020; 610-783-1053 (fax); scott\_houting@nps.gov

**Hovis, Logan H.**

MA, University of British Columbia, 1986  
*Mining industries, technology, industrial archeology*  
Historian  
Alaska Regional Office  
National Park Service  
240 West 5th Avenue  
Anchorage, AK 99501  
907-644-3468; 907-644-3811 (fax); logan\_hovis@nps.gov

**Huston, Ann E.**

MA, California State University-Sacramento, 1985  
*CRM*  
Chief, Cultural Resources  
Channel Islands National Park  
1901 Spinnaker Drive  
Ventura, CA 93001  
805-658-5752; 805-658-5799 (fax); ann\_huston@nps.gov

**Hutchins, Louis P.**

MA, University of California- Berkeley, 1985  
*Industry, technology*  
Historian and Curator  
Northeast Museum Services Center  
National Park Service  
Charlestown Navy Yard, Building I  
Charlestown, MA 02129-4543  
617-242-5613; 617-242-1833 (fax); louis\_hutchins@nps.gov

**Igleheart, Elizabeth**

MSHP, Columbia University, 1984  
*American architectural and landscape history, historic preservation*  
Historian, History Program  
Northeast Regional Office  
National Park Service  
15 State Street  
Boston, MA 02109  
617-223-5018; elizabeth\_igleheart@nps.gov



---

**Ivey, James E.**

MA, University of New Mexico, 2003  
*Spanish colonial, western U.S., architectural history, historical archeology*  
Historian, History Program  
Intermountain Regional Office  
National Park Service  
P.O. Box 728  
Santa Fe, NM 87504-0728  
505-988-6847; 505-988-6876 (fax); jake\_ivey@nps.gov

**Jackson - Retondo, Elaine**

PhD, University of California- Berkeley, 2001  
*19th/20th-century prisons/carceral landscapes, architecture, cultural landscape analysis, Mission 66*  
Architectural Historian, National Historic Landmarks & National Register Programs  
Pacific West Regional Office  
National Park Service  
1111 Jackson Street, Suite 700  
Oakland, CA 94607  
510-817-1428; 510-817-1484 (fax); elaine\_jackson-retondo@nps.gov

**Jacobs, James A.**

PhD, George Washington University, 2005  
*19th and 20th century American domestic architecture, institutional architecture, urban history*  
Historian, Heritage Documentation Programs  
National Park Service  
1849 C Street, NW (2270)  
Washington, DC 20240  
202-354-2184; 202-371-6473 (fax); james\_jacobs@nps.gov

**Jacox, Diann L.**

MA, University of Pennsylvania, 1976  
CRM  
Superintendent  
Cedar Creek & Belle Grove National Historical Park  
P.O. Box 700  
Middletown, VA 22645  
540-868-9176; 540-869-4527 (fax); diann\_jacox@nps.gov

**Jeffrey, Thomas E.**

PhD, Catholic University of America, 1976  
*Historical editing, 19th-century U.S.*  
Historian  
Edison National Historic Site  
Main Street and Lakeside Avenue  
West Orange, NJ 07052-5515  
973-736-0500 x33; 973-736-8496 (fax); tjeffrey@gandalf.rutgers.edu

---

**Jimenez, Corri L.**

MS, University of Oregon, 2000  
*U.S. mining built environment, brothel architecture, historic preservation*  
Architectural Historian  
National Capital Region  
National Park Service  
1100 Ohio Drive, SW  
Washington, DC 20242  
202-619-7086; 202-401-0017 (fax); corri\_jimenez@contractor.nps.gov

**Johnson, Katherine**

MA, University of Alaska- Fairbanks, 1999  
*U.S., environmental, public history*  
Cultural Resource Historian  
Katmai National Park and Preserve  
4230 University Drive, Suite 311  
Anchorage, AK 99507  
907-271-1203; katie\_johnson@nps.gov

**Johnson, Willie Ray**

MA, Auburn University, 1972  
*19th-century U.S. history, Civil War*  
Historian  
Kennesaw Mountain National Battlefield Park  
900 Kennesaw Mountain Drive  
Kennesaw, GA 30152  
770-427-4686 x231; 770-528-8398 (fax); willie\_r\_johnson@nps.gov

**Kain, Ann E.**

MA, Antioch University, 2001  
*Alaska mining, National Register/compliance, historical archeology*  
Cultural Resource Management Specialist  
Denali National Park and Preserve  
240 West 5th Avenue  
Anchorage, AK 99501  
907-644-3227; 907-644-2664 (fax); ann\_kain@nps.gov

**Kendrick, Gregory D.**

MA, University of Wyoming, 1978  
*Environmental, western U.S., Cold War*  
Supervisory Historian  
Intermountain Regional Office  
National Park Service  
P.O. Box 25287  
Denver, CO 80225-0287  
303-969-2894; 303-987-6675 (fax); greg\_kendrick@nps.gov

---

**Kinzey, Karen L.**

MA, Virginia Polytechnic Institute and State University, 1993  
*Civil War, public history, slavery*

Historian  
Arlington House, The Robert E. Lee Memorial  
George Washington Memorial Parkway  
Turkey Run Park  
McLean, VA 22101-0001  
703-235-1530 x226; 703-235-1546 (fax); karen\_kinzey@nps.gov

**Kohan, Carol E.**

MA, State University of New York-Oneonta, 1980  
*Museum management, CRM, 19th/20th-century U.S.*

Deputy Superintendent  
Roosevelt/Vanderbilt National Historic Site  
4097 Albany Post Road  
Hyde Park, NY 12538  
845-229-9115 x29; 845-229-7115 (fax); carol\_kohan@nps.gov

**Kolakowsky, Lisa M.**

MS, University of Pennsylvania, 1997  
*Historic preservation, architecture, Philadelphia*

Historian, National Historic Landmarks  
Northeast Regional Office  
National Park Service  
200 Chestnut Street  
Philadelphia, PA 19106  
215-597-7946; 215-597-5747 (fax); lisa\_kolakowsky@nps.gov

**Kopczynski, Susan A.**

BA, College of St. Rose, 1967  
*Delaware River Valley*

Historian  
Delaware Water Gap National Recreation Area  
Bushkill, PA 18324  
570-588-3840; 570-588-2780 (fax); susan\_kopczynski@nps.gov

**Krakow, Jere L.**

EdD, University of Colorado - Boulder, 1974  
*Historic trails*

Superintendent, National Trails System  
Intermountain Regional Office  
National Park Service  
P.O. Box 728  
Santa Fe, NM 87504-0728  
505-988-6799; 505-986-5214 (fax); jere\_krakow@nps.gov

---

**Krick, Robert E. L.**

BA, Mary Washington College, 1990  
*Civil War*

Historian  
Richmond National Battlefield Park  
3215 East Broad Street  
Richmond, VA 23223  
804-771-2808; 804-771-8522 (fax); bob\_krick@nps.gov

**Kumar, Rebecca V.**

BA, University of Nebraska-Omaha, 2002  
*Southern U.S., medieval Europe, CRM*

Historian  
Midwest Regional Office  
National Park Service  
601 Riverfront Drive  
Omaha, NE 68102-4226  
402-661-1932; 402-661-1982 (fax); rebecca\_kumar@nps.gov

**Lange, Robie**

MA, University of Maryland, 1988  
*Technology, national historic landmarks*

Historian, National Historic Landmarks  
National Park Service  
1849 C Street, NW (2280)  
Washington, DC 20240  
202-354-2257; 202-371-2229 (fax); robie\_lange@nps.gov

**Langum, Connie**

MA, Pittsburgh State University, 1991  
*Trans-Mississippi Civil War, U.S. military*

Historian and Coordinator, American Battlefield Protection Program  
Wilson's Creek National Battlefield  
6424 West Farm Road  
Republic, MO 65738  
417-732-2662 ext. 389; 417-732-1167 (fax); connie\_langum@nps.gov

**Latschar, John A.**

PhD, Rutgers University, 1978  
*CRM*

Superintendent  
Gettysburg National Military Park  
97 Taneytown Road  
Gettysburg, PA 17325  
717-334-1124 x421; 717-334-8170 (fax); john\_latschar@nps.gov

---

**Lavoie, Catherine**

MA, University of Maryland, 1986

*Vernacular architecture, suburbanization, cultural landscapes*

Acting Manager, HABS, Heritage Documentation Programs

National Park Service

1849 C Street, NW (2270)

Washington, DC 20240

202-354-2185; 202-371-2439 (fax); catherine\_lavoie@nps.gov

**Lee, Antoinette J.**

PhD, George Washington University, 1975

*Architecture, U.S. cultural, Washington DC*

Assistant Associate Director, Historical Documentation Programs

National Park Service

1849 C Street, NW (2285)

Washington, DC 20240

202-354-2272; 202-371-2422 (fax); toni\_lee@nps.gov

**Lee, J. Lawrence**

PhD, Auburn University, 2001

*Technology, engineering, railroads, aerospace, manufacturing*

Engineer-Historian, Heritage Documentation Programs

National Park Service

1849 C Street, NW (2270)

Washington, DC 20240

202-354-2161; 202-371-6473 (fax); larry\_lee@nps.gov

**Leonard, Eric**

MA, University of Oklahoma, 2002

*19th-century Federal courts, colonial west, Indian Wars*

Ranger

Big Bend National Park

P.O. Box 129

Big Bend National Park, TX 79834

432-477-1196; 432-477-1175 (fax); eric\_leonard@nps.gov

**Lewis, Darrell**

BA, University of Alaska-Anchorage, 1995

*Historic preservation, Cold War*

Historian

Alaska Regional Office

National Park Service

240 West 5th Avenue

Anchorage, AK 99501

907-644-3470; 907-644-3811 (fax); darrell\_lewis@nps.gov

---

**Long, Timothy Preston**

MS, University of Pennsylvania, 1990

*Historic preservation*

Historical Architect, Cultural Resources Program

Valley Forge National Historical Park

1400 North Outer Line Drive

King of Prussia, PA 19406-1009

610-783-5384; 610-783-5381 (fax); tim\_p\_long@nps.gov

**Lott, Donald Jason**

MA, Northwestern State University of Louisiana, 1999

*CRM, Civil War, Louisiana*

Manager, Integrated Resources Program

Lyndon B. Johnson National Historical Park

100 Ladybird Lane

P.O. Box 329

Johnson City, TX 78636

830-868-7128 x236; 830-868-0810 (fax); jason\_lott@nps.gov

**Louter, David B.**

PhD, University of Washington, 2000

*Western U.S., environmental, 20th-century U.S.*

History Program Manager

Pacific West Regional Office

National Park Service

909 First Avenue

Seattle, WA 98104-1060

206-220-4137; 206-220-4159 (fax); david\_louter@nps.gov

**Lusignan, Paul R.**

MS, University of Vermont, 1982

*U.S. military, industry, public housing*

Historian, National Register of Historic Places

National Park Service

1849 C Street, NW (2280)

Washington, DC 20240

202-354-2229; 202-371-2229 (fax); paul\_lusignan@nps.gov

**Luxenberg, Gretchen A.**

MS, University of Vermont, 1983

*Historic preservation, CRM*

Historian

Pacific West Regional Office

National Park Service

909 First Avenue

Seattle, WA 98104-1060

206-220-4138; 206-220-4159 (fax); gretchen\_luxenberg@nps.gov

---

**Mahr Yanez, Aaron P.**

MA, University of New Mexico, 1991  
*Mexico, western U.S., U.S. and Mexican military frontier*

Historian  
National Trails System Office  
National Park Service  
P.O. Box 728  
Santa Fe, NM 87504  
505-988-6736; 505-986-5214 (fax); aaron\_mahr@nps.gov

**Mannikko, Nancy Farm**

PhD, Virginia Polytechnic Institute and State University, 1997  
*Technology, environment, Gilded Age, Progressive Era*

Architectural Historian  
Midwest Regional Office  
National Park Service  
601 Riverfront Drive  
Omaha, NE 68102-4226  
402-661-1936; 402-661-1982 (fax); nancy\_mannikko@nps.gov

**Manning, Michael J.**

MA, American Military University, 2000  
*18th/19th-century U.S. military and naval, western peace officers*

Supervisory Park Ranger  
Chickasaw National Recreation Area  
1008 W. 2nd St. (Platt Ranger Station)  
Sulphur, OK 73086  
580-622-3161 x406; 580-622-3086 (fax); michael\_manning@nps.gov

**Mark, Stephen R.**

MS, Southern Oregon State College, 1984  
*Conservation, cultural landscapes, western settlement*

Historian  
Crater Lake National Park  
P.O. Box 7  
Crater Lake, OR 97604  
541-594-3094; 541-594-3010 (fax); steve\_mark@nps.gov

**Marsh, Alan**

MA, Georgia College, 1986  
*U.S. POWs, southeastern Indians*

Ranger  
Andersonville National Historic Site  
496 Cemetery Road  
Andersonville, GA 31711  
478-924-0343; 478-928-9640 (fax); alan\_marsh@nps.gov

---

**Marshall, Sandra L.**

MA, University of New Mexico, 1986  
*Architectural history, historic preservation, western U.S.*

Architectural Historian  
Midwest Regional Office  
National Park Service  
601 Riverfront Drive  
Omaha, NE 68102-4226  
402-661-1938; 402-661-1982 (fax); sandy\_marshall@nps.gov

**Martin, Jay C.**

PhD, Bowling Green State University, 1995  
*Maritime, environmental, CRM*

Ranger  
De Soto National Memorial  
P.O. Box 15390  
Bradenton, FL 34280  
941-792-0458; 941-792-5094 (fax); jay\_c\_martin@nps.gov

**Martinez, Daniel A.**

BA, California State University-Dominguez Hills, 1983  
*U.S. frontier military, Civil War, WWII-Pacific, oral history*

Historian  
USS Arizona Memorial  
1 Arizona Memorial Place  
Honolulu, HI 96818-3168  
808-422-2771 x136; 808-541-3168 (fax); daniel\_martinez@nps.gov

**Matthews, Janet Snyder**

PhD, Florida State University, 1999  
*American History*

Associate Director for Cultural Resources  
National Park Service  
1849 C Street, NW, Room 3128  
Washington, DC 20240  
202-208-7625; 202-273-3237 (fax); jan\_matthews@nps.gov

**McClelland, Linda J.**

MA, University of Massachusetts, 1979  
*Architecture, national park design, landscape preservation, historic residential suburbs*

Historian, National Register of Historic Places  
National Park Service  
1849 C Street, NW (2280)  
Washington, DC 20242  
202-354-2258; 202-371-2229 (fax); linda\_mcclelland@nps.gov

---

**McCutchen, Brian K.**

MA, Southeast Missouri State University, 1995  
*CRM, Civil War commemoration, cultural geography*  
Architectural Historian  
Midwest Regional Office  
National Park Service  
601 Riverfront Drive  
Omaha, NE 68102-4226  
402-661-1940; 402-661-1982 (fax); brian\_mccutchen@nps.gov

**McDermott, Dona M.**

MA, University of Delaware, 1983  
*Colonial, U.S. military, curatorial operations*  
Archivist  
Valley Forge National Historical Park  
P.O. Box 953  
Valley Forge, PA 19482-0953  
610-783-1034; 610-783-1060 (fax); dona\_mcdermott@nps.gov

**McDermott, Sandra M.**

MA, University of Oregon, 1984  
*U.S. Indian policy, 19th-century Pacific Rim, Russian America*  
Deputy Associate Regional Director, Cultural Resources  
Intermountain Regional Office  
National Park Service  
P.O. Box 728  
Santa Fe, NM 87504-0728  
505-988-6773; 505-988-6102 (fax); sande\_mcdermott@nps.gov

**McDonnell, Janet A.**

PhD, Marquette University, 1980  
*National Park Service, American Indian, American West, oral history*  
Bureau Historian, Park History  
National Park Service  
1849 C Street, NW (2261)  
Washington, DC 20240  
202-354-2259; 202-371-2229 (fax); janet\_mcdonnell@nps.gov

**McDougall, Andrew C.**

MA, Rutgers University, 1996  
*Revolutionary and antebellum America, U.S. Civil War*  
Ranger, Edgar Allan Poe National Historic Site  
Independence National Historical Park  
143 South Third Street  
Philadelphia, PA 19106  
215-597-8780; andrew\_mcdougall@nps.gov

---

**McKnight, R. Patrick**

MA, University of Wyoming, 1983  
*Railroads, westward expansion, colonial*  
Historian and Archivist  
Steamtown National Historic Site  
150 South Washington Avenue  
Scranton, PA 18503-2018  
570-340-5193; 570-340-5243 (fax); pat\_mcknight@nps.gov

**Miele, Frank J.J.**

PhD, Tulane University, 1984  
*U.S. social and intellectual, architecture, archives*  
Senior Historian, Cultural Resources Division  
Southeast Regional Office  
National Park Service  
Atlanta Federal Center, 1924 Building, 100 Alabama Street, SW  
Atlanta, GA 30303  
404-562-3117 x505; 404-562-3202 (fax); frank\_miele@nps.gov

**Miller, Christina E.**

PhD, Florida State University, 2004  
*Historical archeology, 19th- and 20th-century U.S.*  
Cultural Resource Management Specialist  
Natchez Trace Parkway  
2680 Natchez Trace Parkway  
Tupelo, MS 38804  
662-680-4004; chris\_miller@nps.gov

**Miller, Diane E.**

MA, University of Maryland, 1984  
*Underground railroad, African American, information management*  
National Coordinator, National Underground Railroad Network to Freedom  
Midwest Regional Office  
National Park Service  
601 Riverfront Drive  
Omaha, NE 68102-4226  
402-661-1558; 402-661-1982 (fax); diane\_miller@nps.gov

**Miller, Laura A.**

MA, University of Arkansas-Little Rock, 1999  
*Civil rights, women's history, museum studies*  
Supervisory Historian  
Little Rock Central High School National Historic Site  
2125 Daisy L. Gatson Bates Drive  
Little Rock, AR 72202  
501-374-1957; 501-376-4728 (fax); laura\_a\_miller@nps.gov

---

**Mink, Eric J.**

BA, Mary Washington College, 1993

*Civil War, CRM*

Historian

Fredericksburg and Spotsylvania County Battlefields Memorial National  
Military Park

120 Chatham Lane

Fredericksburg, VA 22405

540 -371-6417; 540 -371-1907 (fax); eric\_mink@nps.gov

**Mitchell, Nora J.**

PhD, Tufts University, 1996

*Landscape history, landscape preservation, CRM*

Director, Conservation Study Institute

Marsh - Billings - Rockefeller National Historical Park

54 Elm Street

Woodstock, VT 05091

802 -457-3368 x17; nora\_mitchell@nps.gov

**Montagna, Dennis R.**

PhD, University of Delaware, 1987

*American art, architecture, public sculpture*

Architectural Historian

Northeast Regional Office

National Park Service

200 Chestnut Street

Philadelphia, PA 19106

215-597-5824; 215-597-0932 (fax); dennis\_montagna@nps.gov

**Moon, Dorothy J.**

MA, Rutgers University, 1991

*Public, Zane Grey, Upper Delaware history*

Historian and Curator

Upper Delaware Scenic and Recreational River

RR 2, Box 2428

Beach Lake, PA 18405

570-685-4873; 570-685-4874 (fax); dorothy\_moon@nps.gov

**Moore, Robert J., Jr.**

PhD, Washington University in St. Louis, 2003

*Western U.S., Progressive Era, Lewis and Clark*

Historian

Jefferson National Expansion Memorial

11 North Fourth Street

St. Louis, MO 63102

314-655-1629; 314-655-1642 (fax); bob\_moore@nps.gov

---

**Moreno, Barry**

BA, California State University-Los Angeles, 1985

*Immigration*

Librarian

Statue of Liberty National Monument

New York, NY 10004

212-363-3206; 212-363-6336 (fax); barry\_moreno@nps.gov

**Mueller, James W.**

PhD, University of Arizona, 1972

*18th century, military earthworks, Victorian America, archeology, anthropology, abolition*

Chief Historian

Independence National Historical Park

143 South Third Street

Philadelphia, PA 19106

215-597-7127; 215-597-5556 (fax); jim\_mueller@nps.gov

**Munson, Robert**

MA, Northern Arizona University, 1975

*Spanish in southwest U.S., Indian Wars, Naval history*

Historian

Cabrillo National Monument

1800 Cabrillo Memorial Drive

San Diego, CA 92106-3601

619-523-4574; 619-557-5469 (fax); robert\_munson@nps.gov

**Murphy, Douglas A.**

PhD, University of North Carolina-Chapel Hill, 1998

*Mexico, 19th-century U.S., Mexican War*

Chief, Interpretation and Visitor Services

Palo Alto Battlefield National Historic Site

1623 Central Boulevard, Suite 213

Brownsville, TX 78520-8326

956-541-2785; 956-541-6356 (fax); paal\_interpretation@nps.gov

**Nelligan, William S.**

MA, University of Maryland, 1989

*Architecture, historic preservation, U.S. military*

Cultural Resource Management Specialist

Gateway National Recreation Area

210 New York Avenue

Staten Island, NY 10305

718-354-4541; 718-354-4550 (fax); william\_nelligan@nps.gov

---

**Noble, Bruce J.**

MA, University of Wyoming, 1984  
*Western U.S., environmental, technology*  
Superintendent

Colorado National Monument  
Fruita, CO 81521-0001  
970-858-3617; 970-858-0372 (fax); bruce\_noble@nps.gov

**Noblitt, Philip T.**

MA, Appalachian State University, 1994  
*Appalachia*

Management Assistant  
Blue Ridge Parkway  
199 Hemphill Knob Road  
Asheville, NC 28803  
828-271-4779 x242; 828-271-4117 (fax); phil\_noblitt@nps.gov

**Norris, Frank B.**

PhD, University of Washington, 1994  
*National Park Service, northern gold rushes, tourism*

Historian  
Alaska Regional Office  
National Park Service  
240 West 5th Avenue  
Anchorage, AK 99501  
907-644-3474; 907-644-3811 (fax); frank\_norris@nps.gov

**Nosal, Timothy A.**

MA, Miami University, 1992  
*U.S. Military, Civil War, Education*

Education Specialist  
Manassas National Battlefield Park  
6511 Sudley Road  
Manassas, VA 20109  
703-361-1339; 703-361-7106 (fax); timothy\_nosal@nps.gov

**O'Brien, William P.**

PhD, University of Colorado, 1994  
*History of the American West, Jacksonian U.S., U.S. intellectual*

Cultural Resource Representative  
Desert Southwest Cooperative Ecosystem Study Unit  
University of Arizona-Southwest Center  
1052 Highland  
Tucson, AZ 85721  
520-626-3966; 520-621-9922 (fax); pat\_o'brien@nps.gov

---

**O'Connell, James C.**

PhD, University of Chicago, 1980  
*U.S. urban and social, New England*

Community Planner  
Northeast Regional Office  
National Park Service  
15 State Street  
Boston, MA 02109  
617-223-5222; 617-223-5164 (fax); jim\_o'connell@nps.gov

**O'Connor, Richard J.**

PhD, University of Pittsburgh, 1991  
*Technology, business, labor*

Acting Manager, Heritage Documentation Programs  
National Park Service  
1849 C Street, NW (2270)  
Washington, DC 20240  
202-354-2186; 202-371-6473 (fax); richard\_o'connor@nps.gov

**O'Reilly, Frank A.**

BA, Washington and Lee University, 1987  
*Civil War*

Historian  
Fredericksburg and Spotsylvania County Battlefields Memorial National  
Military Park  
120 Chatham Lane  
Fredericksburg, VA 22405  
540-654-5140; 540-371-1907 (fax); frank\_o'reilly@nps.gov

**Oates, Jeffrey S.**

MA, Youngstown State University, 1989  
*Antebellum/Civil War, Holocaust, Washington DC*

Ranger  
Valley Forge National Historical Park  
P.O. Box 953  
Valley Forge, PA 19482  
610-783-1000; 610-783-1053 (fax); jeffery\_oates@nps.gov

**Ofenstein, Sharon K.**

MA, Boston University, 1978  
*CRM, architecture*

Technical Publications Editor, Historic Architecture Program  
Northeast Regional Office  
National Park Service  
115 John Street, 4th Floor  
Lowell, MA 08152-1195  
508-970-5141; 508-970-5121 (fax); sharon\_ofenstein@nps.gov

---

**Ogden, David P.**

MA, University of Central Florida, 1992

*Gulf coast history, seacoast fortifications, coast artillery*

Ranger

Gulf Islands National Seashore

1801 Gulf Breeze Parkway

Gulf Breeze, FL 32563

850-934-2633; 850-932-9654 (fax); david\_ogden@nps.gov

**Ogden, James H. III**

BS, Frostburg State College, 1981

*Civil War, U.S. military*

Historian

Chickamauga and Chattanooga National Military Park

P.O. Box 2128

Fort Oglethorpe, GA 30742

706-866-9241 x116; 423-752-5215 (fax); james\_ogden@nps.gov

**Orr, David G.**

PhD, University of Maryland, 1972

*U.S. popular culture, art, technology*

Chief, Division of Archeology and Historic Architecture

Valley Forge National Historical Park

P.O. Box 953

Valley Forge, PA 19481

610-783-0252; 610-783-0265 (fax); david\_orr@nps.gov

**Paige, John C.**

MA, Oklahoma State University, 1973

*Western U.S., 20th-century U.S., public*

Coordinator, Heritage Partnership Program

Intermountain Regional Office

National Park Service

P.O. Box 25287

Denver, CO 80225-0287

303-969-2356; 303-987-6675 (fax); john\_paige@nps.gov

**Parker, Robert T.**

MA, North Carolina State University, 2001

*African American, curatorial, CRM*

Cultural Resource Specialist

Mary McLeod Bethune Council House National Historic Site

1318 Vermont Avenue, NW

Washington, DC 20005

202-673-2402; 202-673-2414 (fax); robert\_parker@nps.gov

---

**Patrick, Jeffrey L.**

MA, Purdue University, 1989

*U.S. 19th-century military, Civil War*

Librarian

Wilson's Creek National Battlefield

6424 West Farm Road

Republic, MO 65738

417-732-2662; 417-732-1167 (fax); jeffrey\_patrick@nps.gov

**Pedrotty, Michael**

MA, University of Illinois, 1995

*Historic preservation, military, middle ages*

Historian

Midwest Regional Office

National Park Service

1701 South Pleasant Street

Urbana, IL 61801

217-384-2103; michael\_pedrotty@nps.gov

**Perlman, Steven J.**

MA, Temple University, 1974

*U.S. 1789-1877*

Ranger

Independence National Historical Park

313 Walnut Street

Philadelphia, PA 19106

215-597-7078; steven\_perlman@nps.gov

**Perrault, Carole L.**

MA, Boston University, 1977

*Art and architectural history, architectural conservation*

Preservation Historian, Historic Architecture Program

Northeast Regional Office

National Park Service

115 John Street, 4th Floor

Lowell, MA 08152-1195

508-970-5133; 508-970-5121 (fax); carole\_perrault@nps.gov

**Perry, James M.**

MA, College of William and Mary, 1984

*CRM, U.S. Military, Washington, D.C.*

Superintendent

Fort Stanwix National Monument

112 East Park Street

Rome, NY 13440

315-336-3113; 315-334-5051 (fax); james\_perry@nps.gov



---

**Perschler, Martin**

PhD, University of Virginia, 1999

*Architecture, preservation, CRM*

Acting Manager, Park History

National Park Service

1849 C Street, NW (2261)

Washington, DC 20240

202-354-2214; 202-371-2229 (fax); martin\_perschler@nps.gov

**Perunko, Jennifer**

MAHP, Goucher College, 2000

*Maritime history*

Historian, Maritime Heritage Program

National Park Service

1849 C Street, NW (2261)

Washington, DC 20240

202-354-2243; 202-371-6447 (fax); jennifer\_perunko@nps.gov

**Peterson, Winona R.**

BS, Pennsylvania State University, 1985

*U.S. military and political, CRM*

Historian and Cultural Resource Specialist

Gettysburg National Military Park

97 Taneytown Road

Gettysburg, PA 17325

717-338-1510; 717-334-8062 (fax); winona\_peterson@nps.gov

**Petravage, Carol A.**

MA, State University of New York-Oneonta, 1985

*Historic furnishings, U.S. social*

Curator

Harpers Ferry Center

National Park Service

P.O. Box 50

Harpers Ferry, WV 25425

304-535-6120; 304-535-6086 (fax); carol\_petravage@nps.gov

**Pfanz, Donald C.**

BA, College of William and Mary, 1980

*Civil War*

Historian

Fredericksburg and Spotsylvania County Battlefields Memorial National Military Park

120 Chatham Lane

Fredericksburg, VA 22405

540-371-0802; 540-371-1907 (fax); donald\_pfanz@nps.gov

---

**Phillips, Maureen K.**

MA, Boston University, 1989

*Architecture, historic architectural materials*

Architectural Conservator, Historic Architecture Program

Northeast Regional Office

National Park Service

115 John Street, 4th Floor

Lowell, MA 08152-1195

508-970-5140; 508-978-5121 (fax); maureen\_phillips@nps.gov

**Pitts, M. Carolyn**

MFA, University of Pennsylvania, 1949

*Architecture, art, museology*

Architectural Historian, National Historic Landmarks

Northeast Regional Office

National Park Service

200 Chestnut Street

Philadelphia, PA 19106

215-597-8875; 215-597-0932 (fax); carolyn\_pitts@nps.gov

**Price, Virginia B.**

MA, University of Virginia, 2001; MA, College of William and Mary, 1999

*Vernacular architecture, colonial*

Historian, Heritage Documentation Programs

National Park Service

1849 C Street, NW (2270)

Washington, DC 20240

202-354-2180; 202-371-6473 (fax); gigi\_price@nps.gov

**Rayburn, Ella S.**

MA, Fort Hayes State University, 1976

*Museum services, CRM, U.S. 1840-90*

Curator

Steamtown National Historic Site

150 South Washington Avenue

Scranton, PA 18503-2018

570-340-5192; 570-340-5309 (fax); ella\_rayburn@nps.gov

**Rehm, Karen G.**

MA, George Mason University, 1990

*CRM, American Revolution, Civil War*

Assistant Superintendent, Historical Interpretation and Preservation

Colonial National Historical Park

P.O. Box 210

Yorktown, VA 23690

757-898-2416; 757-898-6346 (fax); karen\_rehm@nps.gov

---

**Renaud, John W.**

JD, American University, 1979  
*Historic preservation, public history*  
Historian, Historic Preservation Grants  
Heritage Preservation Services  
National Park Service  
1849 C Street, NW (2256)  
Washington, DC 20240  
202-354-2066; 202-371-1794 (fax); john\_renaud@nps.gov

**Riggs, David F.**

MA, Pennsylvania State University, 1974  
*Civil War, U.S. military*  
Curator  
Colonial National Historical Park  
P.O. Box 210  
Yorktown, VA 23690-0210  
757-898-2824; 757-898-6346 (fax); david\_riggs@nps.gov

**Roach, Edward J.**

MA, Indiana University of Pennsylvania, 1997  
*Memory and history, environmental, historic commemoration*  
Historian  
Dayton Aviation Heritage National Historical Park  
P.O. Box 9280  
Dayton, OH 45409  
937-225-7705 x255; 937-222-4512 (fax); edward\_roach@nps.gov

**Roberts, John W.**

PhD, University of Maryland, 1992  
*U.S. diplomatic history, U.S. labor history, U.S. legal history, museum and archival management, historic preservation*  
Acting Chief, National Register of Historic Places and National Historic Landmarks  
National Park Service  
1849 C Street, NW (2280)  
Washington, DC 20240  
202-354-2009; 202-371-6447 (fax); john\_w\_roberts@nps.gov

**Rock, Rosalind Z.**

PhD, University of New Mexico, 1981  
*Spanish colonial borderlands, Spanish paleography, library/curation*  
Historian  
San Antonio Missions National Historical Park  
2202 Roosevelt Avenue  
San Antonio, TX 78210  
210-534-8875 x228; 210-534-1106 (fax); roz\_rock@nps.gov

---

**Rogers, Suzanne**

MA, State University of New York-Oneonta, 1970  
*CRM, trans-Mississippi frontier settlement*  
Historian  
Buffalo National River  
402 North Walnut Street, Suite 136  
Harrison, AR 72601  
870-741-5443; 870-741-7286 (fax); suzie\_rogers@nps.gov

**Rose, Vivien E.**

PhD, State University of New York-Binghamton, 1997  
*U.S. women, social movements, public history, Trans-Mississippi West, CRM*  
Chief, Visitor Services and Cultural Resources  
Women's Rights National Historical Park  
136 Fall Street  
Seneca Falls, NY 13148  
315-568-0007; 315-568-2141 (fax); vivien\_rose@nps.gov

**Rowley, Dean K.**

MA, Atlanta University, 1973  
*African American, civil rights, urban*  
Historian  
Martin Luther King, Jr., National Historic Site  
526 Auburn Avenue, NE  
Atlanta, GA 30312  
404-331-3920; dean\_rowley@nps.gov

**Ryan, Thomas M. (Mike)**

MA, University of South Alabama, 1998  
*Coastal defense, artillery, Civil War*  
Ranger  
Fort Pulaski National Monument  
P.O. Box 30757  
Highway 80 East  
Savannah, GA 31410-0757  
912-786-5787; 912-786-6023 (fax); mike\_t\_ryan@nps.gov

**Sanchez, Joseph P.**

PhD, University of New Mexico, 1974  
*Spanish colonial military, Spanish colonial cartography, comparative colonialism*  
Superintendent  
Intermountain Spanish Colonial Research Center  
University of New Mexico  
Zimmerman Library  
Albuquerque, NM 87131  
505-766-8743; 505-766-5967 (fax); joseph\_sanchez@nps.gov

---

**Sanfilippo, Pamela K.**

MA, Washington University in St. Louis, 1995

*Colonial American and Latin American*

Historian

Ulysses S. Grant National Historic Site

7400 Grant Road

St. Louis, MO 63123 -1801

314-842-1867 x28; 314-842-1659 (fax); pam\_sanfilippo@nps.gov

**Sanford, Dena L.**

MS, University of Oregon, 1991

*Vernacular architecture, rural and industrial architecture, CRM*

Architectural Historian

Midwest Regional Office

National Park Service

601 Riverfront Drive

Omaha, NE 68102 -4226

402-661-1944; 402-661-1982 (fax); dena\_sanford@nps.gov

**Savage, Beth L.**

MA, George Washington University, 1989

*Historic roads/commercial roadside architecture, modern architecture, African American*

Architectural Historian, National Register of Historic Places

National Park Service

1849 C Street, NW (2280)

Washington, DC 20240

202-354-2220; 202-371-2229 (fax); beth\_savage@nps.gov

**Schroeder, Patrick A.**

MA, Virginia Polytechnic Institute and State University, 1996

*Civil War, 18th/19th-century U.S. military & social, interpretation*

Historian

Appomattox Court House National Historical Park

P.O. Box 218

Appomattox, VA 24522

434-352-8987 x32; 434-352-8330 (fax); patrick\_schroeder@nps.gov

**Schullery, Paul**

MA, Ohio University, 1976

*Environmental, sports, ecology and resource management*

Resource Naturalist

Yellowstone National Park

P.O. Box 168

Yellowstone National Park, WY 82190

307-344-2220; 307-344-2211 (fax); paul\_schullery@nps.gov

---

**Scolari, Paul M.**

PhD, University of Pittsburgh, 2005

*Frontier myth in U.S. public monuments, visual culture of the American West, U.S. art and architecture*

Historian and American Indian Liaison

Golden Gate National Recreation Area

Fort Mason, Building 201

San Francisco, CA 94123

415-561-4813; paul\_scolari@nps.gov

**Scott, Gary T.**

MA, University of North Carolina-Chapel Hill, 1969

*Architecture, Washington DC, CRM*

Regional Historian

National Capital Region

National Park Service

1100 Ohio Drive, SW

Washington, DC 20242

202-619-7279; 202-401-0017 (fax); gary\_scott@nps.gov

**Scott, John A.**

MS, Columbia University, 1995

*Architecture, conservation, historic preservation*

Architectural Conservator, Historic Architecture Program

Northeast Regional Office

National Park Service

115 John Street, 4th Floor

Lowell, MA 01852-1195

978-970-5136; 978-970-5121 (fax); john\_a\_scott@nps.gov

**Sellars, Richard W.**

PhD, University of Missouri-Columbia, 1972

*Environmental, CRM, National Park Service*

Historian, Park History

National Park Service

P.O. Box 728

Santa Fe, NM 87504-0728

505-988-6020; 505-988-6019 (fax); richard\_sellars@nps.gov

**Sheads, Scott S.**

BA (hon), University of Baltimore, 1997

*War of 1812, Civil War in Maryland, Coastal Fortifications, American privateers, Ordnance, Military interiors*

Historian, NPS Historic Weapons Officer

Fort McHenry National Monument and Historic Shrine

East Fort Avenue

Baltimore, MD 21230-5393

410-962-4290 x244; 410-962-2500 (fax); scott\_sheads@nps.gov

---

**Shiffer, Rebecca A.**

MA, Cornell University, 1981  
*20th-century architecture, historic building technology, CRM*  
Architectural Historian, Heritage Preservation Services  
National Park Service  
1849 C Street, NW (2255)  
Washington, DC 20240  
202-354-2029; 202-371-1616 (fax); rebecca\_shiffer@nps.gov

**Shine, Gregory P.**

MA, San Francisco State University, 2000  
*Public History, Military, African American*  
Chief Ranger and Historian  
Fort Vancouver National Historic Site & Vancouver National Historic Reserve  
612 East Reserve Street  
Vancouver, WA 98661  
360-816-6231; 360-816-6363 (fax); greg\_shine@nps.gov

**Shives, Tracy L.**

MA, University of Maryland- Baltimore County, 2003  
*Civil War, colonial, African American*  
Ranger  
Monocacy National Battlefield  
4801 Urbana Pike  
Frederick, MD 21704  
301-662-3515; 301-662-3420 (fax); tracy\_shives@nps.gov

**Shull, Carol D.**

MA, University of Texas-Austin, 1969  
*National Register of Historic Places, cultural resource inventories, heritage education, tourism*  
Chief, Heritage Education Services  
National Park Service  
1849 C Street, NW (2258)  
Washington, DC 20240  
202-354-2234; 202-371-2229 (fax); carol\_shull@nps.gov

**Shultz, Scott G.**

MA, Seton Hall University, 1976  
*Civil War, Abraham Lincoln, World War II*  
Librarian  
Ford's Theatre National Historic Site  
517 10th Street, NW  
Washington, DC 20004  
202-426-6924; 202-426-1845 (fax); scott\_shultz@nps.gov

---

**Slupski, Janice M.**

MA, Loyola University of Chicago, 1998  
*Local, 19th/20th-century U.S. social, CRM*  
Historian  
Indiana Dunes National Lakeshore  
1100 North Mineral Springs Road  
Porter, IN 46304-1299  
219-926-7561 x344; 219-926-7561 (fax); janice\_slupski@nps.gov

**Smith, Donna G.**

MA, Sul Ross State University, 1997  
*Interpretation, 19th-century army medicine, education*  
Ranger  
Fort Davis National Historic Site  
P.O. Box 1379  
Fort Davis, TX 79734  
432-426-3224 x24; 432-426-3122 (fax); donna\_smith@nps.gov

**Smith, Jon C.**

MSHP, Ball State University  
*Historic preservation, architectural history, ethnic heritage, heritage and cultural tourism*  
Assistant Associate Director, Heritage Preservation Assistance Programs  
National Park Service  
1849 C Street, NW (2250)  
Washington, DC 20240  
202-354-2095; 202-371-6485 (fax); jon\_smith@nps.gov

**Smith, Timothy B.**

PhD, Mississippi State University, 2001  
*Civil War, World War II/Pacific, Battlefield Preservation*  
Ranger  
Shiloh National Military Park  
1055 Pittsburg Landing Road  
Shiloh, TN 38376  
731-689-5696; 731-689-5330 (fax); timothy\_b\_smith@nps.gov

**Snyder, James B.**

MA, University of California-Davis, 1967  
*Environmental, western U.S., U.S. social*  
Historian  
Yosemite National Park  
P.O. Box 577  
Yosemite National Park, CA 95389  
209-372-0280; 209-372-0255 (fax); jim\_b\_snyder@nps.gov

---

**Spaulding, Stephen M.**

BA, Eisenhower College, 1981  
*18th/19th-century U.S. and Europe, architectural conservation, CRM*  
Chief, Architectural Preservation  
Northeast Regional Office  
National Park Service  
115 John Street, 4th Floor  
Lowell, MA 08152-1195  
978-970-5127; 508-572-5452 (fax); stephen\_spaulding@nps.gov

**Sprinkle, John H., Jr.**

PhD, College of William and Mary, 1992  
*Colonial, historic preservation, archeology*  
Historian, National Historic Landmarks  
National Park Service  
1849 C Street, NW (2261)  
Washington, DC 20240  
202-354-2228; 202-371-2229 (fax); john\_sprinkle@nps.gov

**Spude, Robert L.**

PhD, University of Illinois-Urbana, 1989  
*Western U.S., mining, historic preservation*  
Acting Program Manager, History Program  
Intermountain Regional Office  
National Park Service  
P.O. Box 728  
Santa Fe, NM 87504-0728  
505-988-6770; 505-988-6876 (fax); bob\_spude@nps.gov

**Stevens, Donald L. Jr.**

PhD, Carnegie - Mellon University, 1987  
*U.S. urban, social, environmental*  
Senior Historian  
Midwest Regional Office  
National Park Service  
601 Riverfront Drive  
Omaha, NE 68102-4226  
402-661-1946; 402-661-1982 (fax); don\_stevens@nps.gov

**Stover, Douglas E.**

MA, University of Maine, 1981  
*Cultural landscapes, museum studies, maritime*  
Cultural Resource Manager  
Cape Hatteras National Seashore - Outer Banks Group  
1401 National Park Drive  
Manteo, NC 27954  
252-473-2111; 252-473-2595 (fax); doug\_stover@nps.gov

---

**Strasser, William A.**

MA, University of Tennessee, 1999  
*Social/cultural, Civil War, women*  
Supervisory Ranger  
Klondike Gold Rush National Historical Park  
P.O. Box 517  
Skagway, AK 99840  
907-983-9224; 907-983-9249 (fax); billy\_strasser@nps.gov

**Sullivan, Judith Q.**

MA, University of Delaware, 1988  
*Art, museum studies*  
Architectural Conservator, Historic Architecture Program  
Northeast Regional Office  
National Park Service  
115 John Street, 4th Floor  
Lowell, MA 08152-1195  
978-970-5171; 978-970-5121 (fax); judi\_q\_sullivan@nps.gov

**Sundberg, Jane M.**

MA, University of Chicago, 1969  
*CRM, historic preservation 1900-1930*  
Supervisory Cultural Resource Management Specialist  
Colonial National Historical Park  
P.O. Box 210  
Yorktown, VA 23690  
757-898-3400; 757-898-6346 (fax); jane\_sundberg@nps.gov

**Sutton, Robert K.**

PhD, Washington State University, 1984  
*American frontier, U.S. Constitution, architecture*  
Superintendent  
Manassas National Battlefield Park  
12521 Lee Highway  
Manassas, VA 22110  
703-754-1861; 703-754-1107 (fax); robert\_sutton@nps.gov

**Tagger, Barbara A.**

MA, Atlanta University, 1984  
*U.S. 1880-1920, African-American, urban*  
Historian  
Southeast Regional Office  
National Park Service  
Atlanta Federal Center, 1924 Building  
100 Alabama Street, SW  
Atlanta, GA 30303  
404-562-3108 x518; 404-562-3200 (fax); barbara\_tagger@nps.gov

---

**Tamburro, Samuel J.**

MA, University of Akron, 1997  
*Transportation, Early Republic, Western Reserve*  
Historian  
Chesapeake & Ohio Canal National Historical Park  
1850 Dual Highway, Suite 100  
Hagerstown, MD 21740  
301-714-2211; 301-714-2232 (fax); sam\_tamburro@nps.gov

**Tobias, Clifford I.**

PhD, Case Western Reserve University, 1975  
*19th-century U.S. political, U.S. military/naval/aviation/space*  
Historian, History Program  
Northeast Regional Office  
National Park Service  
200 Chestnut Street  
Philadelphia, PA 19106  
215-597-9970; 215-597-0932 (fax); cliff\_tobias@nps.gov

**Toogood, Anna Cox**

BA, University of Pennsylvania, 1967  
*Philadelphia, African-American, 18th-century America*  
Historian  
Independence National Historical Park  
143 South Third Street  
Philadelphia, PA 19106  
215-597-1189; 215-597-5556 (fax); coxey\_toogood@nps.gov

**Toothman, Stephanie S.**

PhD, University of Pennsylvania, 1978  
*U.S. material culture, U.S. social, urban planning/CRM*  
Chief, Cultural Resources Program  
Pacific West Regional Office  
National Park Service  
909 First Avenue  
Seattle, WA 98104-1060  
206-220-4139; 206-220-4159 (fax); stephanie\_toothman@nps.gov

**Townsend, Timothy P.**

MA, University of Illinois-Springfield, 1995  
*Abraham Lincoln, CRM*  
Historian  
Lincoln Home National Historic Site  
413 South Eighth Street  
Springfield, IL 62701-1905  
217-492-4241 x241; 217-492-4673 (fax); tim\_townsend@nps.gov

---

**Trail, Susan W.**

PhD, University of Maryland, 2005  
*Historical archeology, cultural landscapes, historic preservation*  
Superintendent  
Monocacy National Battlefield  
4801 Urbana Pike  
Frederick, MD 21704-4801  
301-662-3515; 301-662-3420 (fax); susan\_trail@nps.gov

**Travis, Tara E.**

PhD, Arizona State University, 2006  
*U.S. history, American Indian and Chicana, architecture*  
Ethnohistorian, Office of Indian Affairs and American Culture  
Flagstaff Area National Monuments  
6400 N Highway 89  
Flagstaff, AZ 86004  
928-526-1157; tara\_travis@nps.gov

**Tselos, George D.**

PhD, University of Minnesota, 1970  
*U.S. labor, Great Depression, 20th-century U.S., Post-Civil War Immigration*  
Supervisory Archivist  
Statue of Liberty National Monument  
Liberty Island  
New York, NY 10004  
212-363-3206 x159; 212-363-6302 (fax); george\_tselos@nps.gov

**Turton, Catherine E.**

MS, University of Pennsylvania, 1998  
*Historic preservation, architectural conservation*  
Historian, National Historic Landmarks  
Northeast Regional Office  
National Park Service  
200 Chestnut Street  
Philadelphia, PA 19106  
215-597-1726; 215-597-6599 (fax); catherine\_turton@nps.gov

**Unrau, Harlan D.**

MA, California State University-Fullerton, 1971  
*Immigration, 20th-century U.S., U.S. urban*  
Cultural Resource Specialist  
Denver Service Center  
National Park Service  
P.O. Box 25287  
Denver, CO 80225-0287  
303-969-2254; 303-969-2236 (fax); harlan\_unrau@nps.gov

---

**Updyke, Gloria**

MA, California State University - Dominguez Hills, 1996  
*Women's history, Appalachia, environmental*  
Interpretive Program Specialist  
Northeast Center for Education Services  
National Park Service  
Boott 5th Floor  
Lowell, MA 01852  
978-970-5035; gloria\_updyke@nps.gov

**Urion, Jo**

MA, University of Alberta, 1999  
*American West, Environmental history, oral history*  
Historian  
Keweenaw National Historical Park  
P.O. Box 471  
Calumet, MI 49913  
906-337-1104 x253; 906-337-1273 (fax); jo\_urion@nps.gov

**Valencia, Elizabeth**

MA, Purdue University, 1989  
*Great Lakes, submerged cultural resources, U.S. rural*  
Chief, Interpretation and Cultural Resources, Cultural Resource Management  
Isle Royale National Park  
800 East Lakeshore Drive  
Houghton, MI 49931-1895  
906-487-7153; 906-487-7170 (fax); liz\_valencia@nps.gov

**Vivian, Daniel J.**

MA, University of South Carolina, 1997  
*American South, historic preservation, American architecture*  
Historian, National Register of Historic Places  
National Park Service  
1849 C Street, NW (2280)  
Washington, DC 20240  
202-354-2252; 202-371-2229 (fax); dan\_vivian@nps.gov

**Von Lunz, Anna**

MA, Goucher College, 1999  
*Historic preservation, exhibits, collections management*  
Cultural Resource Manager  
Fort McHenry National Monument and Historic Shrine  
East Fort Avenue  
Baltimore, MD 21230-5393  
410-962-4290 x239; 410-962-3885 (fax); anna\_von\_lunz@nps.gov

---

**Vouri, Michael P.**

BA, Western Washington University, 1980  
*Maritime, 19th-century U.S. military, Civil War, Pacific Northwest*  
Chief of Interpretation  
San Juan Island National Historical Park  
P.O. Box 429  
Friday Harbor, WA 98250  
360-378-2902; 360-378-2996 (fax); mike\_vouri@nps.gov

**Wallace, Teresa A.**

PhD, Boston University, 1983  
*Labor, immigration, women*  
Curator  
Minute Man National Historical Park  
174 Liberty Street  
Concord, MA 01742-1705  
978-318-7841; 978-318-7840 (fax); terrie\_wallace@nps.gov

**Ward, Gretchen M.**

MA, University of New Mexico, 2005  
*Southwest archeology, historical archeology, environmental history*  
Cultural Resource Program Manager and Archeologist  
Petroglyph National Monument  
6001 Unser Blvd. NW  
Albuquerque, NM 87120  
505-899-0205 x 343; 505-899-0207 (fax); gretchen\_ward@nps.gov

**Ward, Robert H.**

BS, Tennessee Technological University, 1979  
*19th-century U.S., Civil War*  
Historian  
Mammoth Cave National Park  
Mammoth Cave, KY 42259  
502-749-2508; 502-749-2916 (fax); bob\_ward@nps.gov

**Weber, Sandra S.**

MA, State University of New York - Oneonta, 1982  
*Historical interpretation*  
Interpretive Program Specialist  
Interpretation and Education  
National Park Service  
1849 C Street, NW  
Washington, DC 20240  
202-513-7142; 202-371-6662 (fax); sandy\_weber@nps.gov

---

**Wegman-French, Lysa**

MA, University of Colorado, 1991  
*U.S. social, western U.S., CRM*  
Historian  
Intermountain Regional Office  
National Park Service  
P.O. Box 25287  
Denver, CO 80225-0287  
303-969-2842; 303-987-6675 (fax); lysa\_wegman-french@nps.gov

**Weinbaum, Paul O.**

PhD, University of Rochester, 1977  
*CRM, U.S. social*  
Manager, History Program  
Northeast Regional Office  
National Park Service  
15 State Street  
Boston, MA 02109-3572  
617-223-5057; 617-223-5195 (fax); paul\_weinbaum@nps.gov

**Werst, Lee S.**

MA, East Stroudsburg University, 1988  
*British, colonial, U.S. military*  
Chief of Interpretation  
Timpanogos Cave National Monument  
RR 3, Box 200  
American Fork, UT 84003  
801-756-5239; 801-756-5661 (fax); lee\_werst@nps.gov

**West, Patricia**

PhD, State University of New York-Binghamton, 1992  
*Women, historic house museums/interpretation*  
Curator  
Martin Van Buren National Historic Site  
P.O. Box 545  
Kinderhook, NY 12106  
518-758-9689; 518-758-6986 (fax); patricia\_west@nps.gov

**Wheelock, Perry Carpenter**

MA, George Washington University, 1988  
*American studies, cultural landscapes*  
Cultural Resource Manager  
Rock Creek Park  
3545 Williamsburg Lane, NW  
Washington, DC 20008  
202-895-6011; 202-895-6015 (fax); perry\_wheelock@nps.gov

---

**Whissen, Steven R.**

MA, Colorado State University, 1982  
*Mining, NPS planning, CRM*  
Cultural Resource Specialist  
Denver Service Center  
National Park Service  
P.O. Box 25287  
Denver, CO 80225-0287  
303-969-2380; 303-969-2930 (fax); steve\_whissen@nps.gov

**Whitacre, Christine S.**

MA, University of Colorado, 1994  
*CRM, western U.S., Cold War, American Indian, historic preservation*  
Cultural Resource Specialist  
Rocky Mountains Cooperative Ecosystem Studies Unit  
University of Montana  
Department of Anthropology  
Missoula, MT 59812  
406-243-2660; 406-243-2652 (fax); christine\_whitacre@nps.gov

**Whittlesey, Lee H.**

MA, Montana State University, 2004; PhD (hon.), Idaho State University, 2001;  
JD, University of Oklahoma, 1988  
*Northern Rockies*  
Park Historian  
Yellowstone National Park  
P.O. Box 168  
Yellowstone National Park, WY 82190  
307-344-2261; 307-344-2323 (fax); lee\_whittlesey@nps.gov

**Wiesner, Cary A.**

MA, Eastern Illinois University, 1987  
*Military, presidents*  
Historian  
Herbert Hoover National Historic Site  
110 Parkside Drive  
West Branch, IA 52358  
319-643-2541; 319-643-2468 (fax); cary\_wiesner@nps.gov

**Williams, Eric K.**

BA, University of North Carolina-Asheville, 1976  
*Colonial, American Revolution*  
Historian  
Ninety Six National Historic Site  
P.O. Box 496  
Ninety Six, SC 29666  
864-543-4068; 864-543-2058 (fax); eric\_williams@nps.gov



---

**Williams, Mary L.**

MA, University of Connecticut, 1965

*19th-century U.S. military, women, African-American military*

Historian

Fort Davis National Historic Site

P.O. Box 1379

Fort Davis, TX 79734

432-426-3224 x25; 432-426-3122 (fax); Mary\_L\_Williams@nps.gov

**Winschel, Terrence J.**

EdS, Mississippi College, 1989

*Civil War, CRM*

Historian

Vicksburg National Military Park

3201 Clay Street

Vicksburg, MS 39180

601-619-2908; 601-636-9497 (fax); terrence\_winschel@nps.gov

**Winstel, Jeffrey F.**

MS, Eastern Michigan University, 1989

*Vernacular architecture, Midwestern agriculture, preservation planning*

Historian

Cuyahoga Valley National Park

15610 Vaughn Road

Brecksville, OH 44141-3018

216-526-5256; 216-526-1144 (fax); jeff\_winstel@nps.gov

**Wirth, Edward P.**

MA, State University of New York-Albany, 1987

*Archives management*

Archivist

Edison National Historic Site

Main Street and Lakeside Avenue

West Orange, NJ 07052-5515

973-736-0550 x20; 973-736-8496 (fax); EDIS\_Archives@nps.gov

**Yocum, Barbara A.**

BA, State University of New York-Buffalo, 1977

*Architecture, historic architectural materials*

Senior Architectural Conservator, Historic Architecture Program

Northeast Regional Office

National Park Service

115 John Street, 4th Floor

Lowell, MA 01852-1195

508-970-5138; 508-970-5121 (fax); barbara\_yocum@nps.gov

---

**Young, Kelly E.**

MHP, University of Georgia, 1999

*Historic preservation*

Collections Manager, Heritage Documentation Programs

National Park Service

1849 C Street, NW (2270)

Washington, DC 20240

202-543-2160; 202-371-6473 (fax); kelly\_young@nps.gov

---

## PARK/OFFICE INDEX

Alaska Regional Office: Clemens, Houston, Hovis, Lewis, Norris  
American Battlefield Protection Program: Gossett, Hawke  
Andersonville National Historic Site: Marsh  
Antietam National Battlefield: Alexander  
Appomattox Court House National Historical Park: Schroeder  
Arlington House, The Robert E. Lee Memorial: Cucurullo, Kinzey  
Big Bend National Park: Leonard  
Blue Ridge Parkway: Givens, Noblitt  
Boston National Historical Park: Blatt, Carlson  
Buffalo National River: Rogers  
Cabrillo National Monument: Munson  
Cape Cod National Seashore: Burke  
Cape Hatteras National Seashore - Outer Banks Group: Stover  
Catoctin Center for Regional Studies: Herrin  
Cedar Creek & Belle Grove National Historical Park: Jacox  
Channel Islands National Park: Huston  
Chesapeake & Ohio Canal National Historical Park: Tamburro  
Chickamauga and Chattanooga National Military Park: Ogden, J.  
Chickasaw National Recreation Area: Manning  
Colonial National Historical Park: Depew, Rehm, Riggs, Sundberg  
Colorado National Monument: Noble  
Crater Lake National Park: Mark  
Cuyahoga Valley National Park: Winstel  
Dayton Aviation Heritage National Historical Park: Honious, Roach  
De Soto National Memorial: Martin  
Delaware Water Gap National Recreation Area: Cika, Kopczynski  
Denali National Park and Preserve: Kain  
Denver Service Center: Cody, Unrau, Whissen  
Desert Southwest Cooperative Ecosystem Study Unit: O'Brien  
Edison National Historic Site: DeGraaf, L., Jeffrey, Wirth  
Eisenhower National Historic Site: Hegeman  
Flagstaff Area National Monuments: Travis  
Ford's Theatre National Historic Site: Felton, Shultz  
Fort Davis National Historic Site: Smith, D., Williams, M.  
Fort McHenry National Monument and Historic Shrine: Sheads, Von Lunz  
Fort Pulaski National Monument: Ryan  
Fort Raleigh National Historic Site: Bolling, Flores  
Fort Scott National Historic Site: Frey  
Fort Stanwix National Monument: Perry  
Fort Sumter National Monument and Charles Pinckney National Historic Site: Hatcher  
Fort Vancouver National Historic Site: Brown, Shine  
Frederick Douglass National Historic Site and Fort Circle Parks: Galonska  
Fredericksburg and Spotsylvania County Battlefields Memorial National Military Park: Mink, O'Reilly, Pfanz

---

**Gates of the Arctic National Park and Preserve/Yukon-Charley Rivers National Preserve:** Beckstead  
**Gateway National Recreation Area:** Foppes, Nelligan  
**Gettysburg National Military Park:** Harrison, Hartwig, Latschar, Peterson  
**Golden Gate National Recreation Area:** Baron, Evenson, Haller, Scolari  
**Grant-Kohrs Ranch National Historic Site:** Ford  
**Great Smoky Mountains National Park:** Cave  
**Gulf Islands National Seashore:** Ogden, D.  
**Harpers Ferry Center:** Chamberlain, Greene, Heald, Petravage  
**Herbert Hoover National Historic Site:** Wiesner  
**Heritage Documentation Programs:** Christianson, Davidson, Hall, Jacobs, Lavoie, Lee, J., O'Connor, Price, Young  
**Heritage Education Services:** Boland, Shull  
**Heritage Preservation Assistance Programs:** Smith, J.  
**Heritage Preservation Services:** Grimmer, Renaud, Shiffer  
**Historical Documentation Programs:** Lee, A.  
**Homestead National Monument of America:** Arrington  
**Hopewell Furnace National Historic Site:** Hebblethwaite  
**Independence National Historical Park:** Delmar, Diethorn, Fanelli, McDougall, Mueller, Perlman, Toogood  
**Indiana Dunes National Lakeshore:** Slupski  
**Intermountain Regional Office:** Gomez, Ivey, Kendrick, Krakow, McDermott, S., Paige, Spude, Wegman-French  
**Intermountain Spanish Colonial Research Center:** Gurulé, Sanchez  
**Interpretation and Education:** Weber  
**Isle Royale National Park:** Valencia  
**Jefferson National Expansion Memorial:** Moore  
**John H. Chafee Blackstone River Valley National Heritage Corridor:** Gall  
**Katmai and Lake Clark National Parks:** Branson  
**Katmai National Park and Preserve:** Johnson, K.  
**Kennesaw Mountain National Battlefield Park:** Johnson, W.  
**Keweenaw National Historical Park:** Urion  
**Kings Mountain National Military Park:** Dunkerly  
**Klondike Gold Rush National Historical Park:** Gurcke, Strasser  
**Lincoln Boyhood National Memorial:** Capps  
**Lincoln Home National Historic Site:** Townsend  
**Little Bighorn Battlefield National Monument:** Doerner  
**Little Rock Central High School National Historic Site:** Baker, Miller, L.  
**Lyndon B. Johnson National Historical Park:** Lott  
**Mammoth Cave National Park:** Ward, R.  
**Manassas National Battlefield Park:** Nosal, Sutton  
**Maritime Heritage Program:** Foster, Perunko  
**Marsh-Billings-Rockefeller National Historical Park:** Houghton, Mitchell  
**Martin Luther King, Jr., National Historic Site:** Rowley  
**Martin Van Buren National Historic Site:** West  
**Mary McLeod Bethune Council House National Historic Site:** Parker

---

**Midwest Regional Office:** Ahlgren, Cockrell, Dickey, Franklin Weekley, Good, Hill, Kumar, Mannikko, Marshall, McCutchen, Miller, D., Pedrotty, Sanford, Stevens  
**Minute Man National Historical Park:** Derry, Wallace  
**Mississippi National River and Recreation Area:** Anfinson  
**Mojave National Preserve:** DeGraff  
**Monocacy National Battlefield:** Shives, Trail  
**Morristown National Historical Park:** DeGraaf, A.  
**Natchez Trace Parkway:** Miller, C.  
**National Capital Region:** Everett, Fanning, Faragasso, Jimenez, Scott, G.  
**National Historic Landmarks:** Henry, Lange, Roberts  
**National Register of Historic Places:** Andrus, Beall, Lusignan, McClelland, Roberts, Savage, Vivian  
**National Trails System Office:** Mahr Yanez  
**New River Gorge National River:** Fuerst  
**Nez Perce National Historical Park:** Blackburn, Eckberg  
**Ninety Six National Historic Site:** Williams, E.  
**Northeast Center for Education Services:** Updyke  
**Northeast Museum Services Center:** Hutchins  
**Northeast Regional Office:** Albee, Hay, Igleheart, Kolakowsky, Montagna, O'Connell, Ofenstein, Perrault, Phillips, Pitts, Scott, J., Spaulding, Sullivan, Tobias, Turton, Weinbaum, Yocum  
**Office of Information and Telecommunication Center:** Burrell  
**Overmountain Victory National Historic Trail:** Carson  
**Pacific West Regional Office:** Chappell, Jackson - Retondo, Louter, Luxenberg, Toothman  
**Palo Alto Battlefield National Historic Site:** Murphy  
**Park Historic Structures and Cultural Landscapes:** Davis  
**Park History Program:** Bearss, Butowsky, Feller, McDonnell, Perschler, Sellars, Sprinkle  
**Petersburg National Battlefield:** Blankenship, Calkins  
**Petroglyph National Monument:** Ward, G.  
**Richmond National Battlefield Park:** Krick  
**Rock Creek Park:** Wheelock  
**Rocky Mountains Cooperative Ecosystem Studies Unit:** Whitacre  
**Roosevelt-Vanderbilt National Historic Sites:** Futral, Kohan  
**Saint-Gaudens National Historic Site:** Duffy  
**Salem Maritime National Historic Site:** Frayler  
**San Antonio Missions National Historical Park:** Rock  
**San Juan Island National Historical Park:** Vouri  
**Saratoga National Historical Park:** Hammell  
**Shenandoah National Park:** Engle  
**Shiloh National Military Park:** Allen, Smith, T.  
**Sitka National Historical Park:** Griffin  
**Southeast Regional Office:** Barrett, Binkley, Coffey, Cook, J., Gerdes, Hitchcock, Miele, Tagger

---

Springfield Armory National Historic Site: Colton  
St. Croix National Park Group: Cissel  
Statue of Liberty National Monument: Moreno, Tselos  
Steamtown National Historic Site: McKnight, Rayburn  
Timpanogos Cave National Monument: Werst  
Tumacacori National Historical Park: Garate  
Ulysses S. Grant National Historic Site: Eckard, Sanfilippo  
Upper Delaware Scenic and Recreational River: Moon  
USS Arizona Memorial: Martinez  
Valley Forge National Historical Park: Houting, Long, McDermott, D., Oates, Orr  
Vicksburg National Military Park: Winschel  
Voyageurs National Park: Graves  
Weir Farm National Historic Site: Cook, L.  
Wilson's Creek National Battlefield: Langum, Patrick  
Women's Rights National Historical Park: Derosie, Rose  
Wrangell-St. Elias Park and Reserve: Bleakley  
Yellowstone National Park: Schullery, Whittlesey  
Yosemite National Park: Snyder

---

## SUBJECT SPECIALTY INDEX

**18th century:** Futral, Mueller, Toogood  
**18th and 19th centuries:** Alexander, Chamberlain, Depew, Dunkerly, Hebblethwaite, Manning, McDougall, Perlman, Schroeder, Spaulding  
**19th century:** Baker, Calkins, Capps, Christianson, Cika, Derry, Faragasso, Gaumer, Jeffrey, Johnson, W., Leonard, Mahr Yanez, McDermott, S., Mueller, Murphy, O'Brien, Patrick, Rayburn, Smith, D., Tamburro, Tobias, Vouri, Ward, R., Williams, M.  
**19th and 20th centuries:** Cody, Cucurullo, Evenson, Jackson - Retondo, Jacobs, Kohan, Miller, C., Slupski, Tagger  
**20th century:** Cika, Cockrell, Davidson, DeGraaf, L., Derry, Hegeman, Louter, Paige, Shiffer, Tselos, Unrau  
**abolition:** Mueller  
**Abraham Lincoln:** Felton, Good, Hebblethwaite, Shultz, Townsend  
**aerospace:** Butowsky, Lee, J.  
**African-American:** Burrell, Faragasso, Honious, Miller, D., Parker, Rowley, Savage, Shine, Shives, Tagger, Toogood, Williams, M.  
**agriculture:** Valencia, Winstel  
**Alaska:** Beckstead, Bleakley, Branson, Clemens, Cook, L., Griffin, Houston, Kain  
**American Indian:** Frey, Greene, Marsh, McDermott, S., McDonnell, Travis, Whitacre  
**American Revolution:** Burke, Carson, Rehm, Williams, E.  
**American South:** Andrus, Cave, Kumar, Vivian  
**American West:** Beckstead, Chappell, Eckberg, Galonska, Gomez, Ivey, Kendrick, Leonard, Louter, Mahr Yanez, Mark, Marshall, McDonnell, McKnight, Moore, Noble, O'Brien, Paige, Scolari, Snyder, Spude, Urion, Wegman - French, Whitacre  
**antebellum:** Andrus, Derosie, Oates  
**anthropology:** Mueller  
**Appalachia:** Cave, Fuerst, Givens, Noblitt, Updyke  
**archeology:** Mueller, Sprinkle, Ward, G.  
**architectural conservation:** Perrault, Spaulding, Turton  
**architecture:** Albee, Baron, Barrett, Burns, Duffy, Fanning, Gerdes, Grimmer, Hill, Igleheart, Ivey, Jackson - Retondo, Jacobs, Jimenez, Kolakowsky, Lee, A., Lusignan, Marshall, McClelland, Miele, Montagna, Nelligan, Ofenstein, Perrault, Perschler, Phillips, Pitts, Sanford, Savage, Scolari, Scott, G., Scott, J., Smith, J., Sutton, Travis, Vivian, Yocum  
**architecture, vernacular:** Cook, L., Davidson, Everett, Houston, Lavoie, Price, Sanford, Winstel  
**Arkansas:** Baker  
**art:** Duffy, Montagna, Orr, Perrault, Pitts, Scolari, Sullivan  
**artillery:** Ryan, Sheads  
**aviation:** Cook, J., Honious, Tobias  
**battlefield preservation:** Smith, T.  
**British history:** Werst  
**building materials and technologies:** Albee, Grimmer, Gurcke, Phillips, Shiffer, Yocum  
**business:** DeGraaf, L., O'Connor

---

**cemeteries:** Dickey  
**Chicana:** Travis  
**childhood:** Hammell  
**civil rights:** Franklin Weekley, Miller, L., Rowley  
**Civil War:** Alexander, Allen, Bearss, Blackburn, Blankenship, Burrell, Calkins, Givens, Good, Hartwig, Hatcher, Johnson, W., Kinzey, Krick, Langum, Lott, Martinez, McCutchen, McDougall, Mink, Nosal, O'Reilly, Oates, Ogden, J., Patrick, Pfanz, Rehm, Riggs, Ryan, Schroeder, Sheads, Shives, Shultz, Smith, T., Strasser, Vouri, Ward, R., Winschel  
**coastal defense:** Baron, Ogden, D., Ryan, Sheads  
**Cold War:** Ahlgren, Coffey, Kendrick, Lewis, Whitacre  
**collections management:** DeGraaf, A., Ford, Von Lunz  
**colonial history:** Bolling, Carson, Cissel, Diethorn, Fanelli, Felton, Foppes, Franklin Weekley, Hill, McDermott, D., McKnight, Price, Sanchez, Sanfilippo, Shives, Sprinkle, Werst, Williams, E.  
**Colonial Revival:** Hitchcock  
**commemoration:** Fanning, Roach  
**conservation:** Binkley, Everett, Mark, Scott, J.  
**cultural geography:** Everett, McCutchen  
**cultural landscapes:** Ahlgren, Davis, DeGraff, Engle, Fanning, Gerdes, Jackson - Retondo, Lavoie, Mark, Stover, Trail, Wheelock  
**cultural resources management:** Allen, Barrett, Burke, Capps, Carlson, Cockrell, DeGraff, Dunkerly, Feller, Flores, Franklin Weekley, Frayler, Fuerst, Gossett, Graves, Greene, Griffin, Harrison, Hawke, Hay, Hebblethwaite, Honious, Houghton, Huston, Jacox, Kohan, Kumar, Latschar, Lott, Luxenberg, Martin, McCutchen, Mink, Mitchell, Ofenstein, Parker, Perry, Perschler, Peterson, Rayburn, Rehm, Rogers, Rose, Sanford, Scott, G., Sellars, Shiffer, Shull, Slupski, Spaulding, Sundberg, Toothman, Townsend, Wegman - French, Weinbaum, Whissen, Whitacre, Winschel  
**curation and exhibits:** McDermott, D., Parker, Von Lunz  
**Danish history:** Cissel  
**decorative arts:** Diethorn, Hammell, Houghton  
**Delaware River Valley:** Kopczynski, Moon  
**diplomatic history:** Blackburn, Gall, Roberts  
**ecology:** Schullery  
**education:** Boland, Nosal, Shull, Smith, D.  
**engineering:** Lee, J.  
**environmental history:** Anfinson, Gomez, Johnson, K., Kendrick, Louter, Mannikko, Martin, Noble, Roach, Schullery, Sellars, Snyder, Stevens, Updyke, Urion, Ward, G.  
**ethnic heritage:** Smith, J.  
**folklore:** Fanelli  
**furnishings and interiors:** Futral, Heald, Petravage, Sheads  
**gardens and landscapes:** Hill, Hitchcock, Mitchell  
**Gilded Age:** Mannikko  
**Great Depression:** Tselos  
**Great Lakes:** Valencia  
**Gulf Coast:** Ogden, D.

---

**historic preservation:** Albee, Boland, Burns, Calkins, Christianson, Clemens, Cook, J., Dickey, Dunkerly, Fanelli, Foppes, Gall, Gossett, Griffin, Hall, Houston, Igleheart, Jimenez, Kolakowsky, Lewis, Long, Luxenberg, Marshall, Nelligan, Pedrotty, Perschler, Renaud, Roberts, Scott, J., Smith, J., Sprinkle, Spude, Sundberg, Trail, Turton, Vivian, Von Lunz, Whitacre, Young  
**historical archeology:** Burke, Gurcke, Ivey, Kain, Miller, C., Trail, Ward, G.  
**historical editing:** Carlson, Jeffrey  
**history of the frontier:** Doerner, Frey, Greene, Hawke, Mahr Yanez, Martinez, Rogers, Scolari, Sutton  
**Holocaust:** Oates  
**immigration:** Moreno, Tselos, Unrau, Wallace  
**Indian Wars:** Leonard, Munson  
**industrial archeology:** Gurcke, Hovis  
**industry and industrialization:** Coffey, Hay, Herrin, Hutchins, Lee, J., Lusignan  
**information management:** Beall, Miller, D.  
**intellectual history:** Miele, O'Brien  
**interpretation:** Branson, Schroeder, Smith, D., Weber, West  
**Juan Bautista de Anza:** Garate  
**labor:** Blatt, O'Connor, Roberts, Tselos, Wallace  
**land policy:** Arrington  
**landscape preservation:** McClelland, Mitchell  
**Latin American history:** Foppes, Sanfilippo  
**legal history:** Beckstead, Roberts  
**Lewis and Clark:** Moore  
**lighthouses:** Eckard, Flores  
**Louisiana:** Lott  
**maritime history:** Bolling, Carlson, Carson, Eckard, Foster, Frayler, Gurulé, Haller, Martin, Munson, Perunko, Stover, Tobias, Valencia, Vouri  
**material culture:** Futral, Hammell, Hay, Heald, Houghton, Toothman  
**Mexican War:** Murphy  
**Mexico:** Mahr Yanez, Murphy  
**Middle Ages:** Kumar, Pedrotty  
**Midwest:** Winstel  
**military earthworks:** Mueller  
**military history:** Allen, Arrington, Blackburn, Blankenship, Butowsky, Carson, Chappell, Depew, Eckard, Eckberg, Foster, Frayler, Frey, Gaumer, Haller, Harrison, Hatcher, Hawke, Houting, Langum, Lusignan, McDermott, D., Nelligan, Nosal, Ogden, J., Pedrotty, Perry, Peterson, Riggs, Shine, Tobias, Werst, Wiesner  
**mining:** Bleakley, Hovis, Jimenez, Spude, Whissen  
**Mission 66:** Jackson - Retondo  
**Mississippi River:** Anfinson  
**museums and archives:** Diethorn, Houting, Kohan, Miele, Miller, L., Pitts, Rayburn, Roberts, Rock, Stover, Sullivan, Wirth  
**NACA/NASA:** Cook, J.  
**National Historic Landmarks:** Henry, Lange  
**National Park Service:** Binkley, Cockrell, McClelland, McDonnell, Norris, Sellars, Whissen  
**National Register of Historic Places:** Kain, Shull

---

**New England:** O'Connell  
**North Carolina:** Givens  
**northern gold rushes:** Norris  
**Northern Rockies:** Whittlesey  
**oral history:** Branson, Martinez, McDonnell, Urion  
**Pacific Northwest:** Vouri  
**Philadelphia:** Kolakowsky, Toogood  
**Plains Indian:** Doerner  
**planning:** Barrett, Brown, Cook, L., Toothman, Whissen, Winstel  
**political history:** Evenson, Harrison, Peterson  
**popular culture:** Orr  
**prisoners of war:** Marsh  
**Progressive Era:** Mannikko, Moore  
**public history:** Anfinson, Blatt, Johnson, K., Kinzey, Moon, Paige, Renaud, Rose, Shine  
**Pueblos:** Feller  
**railroads:** Chappell, Lee, J., McKnight  
**Reconstruction:** Bearss  
**roads and trails:** Ahlgren, Davis, Gerdes, Krakow, Savage  
**Russian America:** McDermott, S.  
**Russian history:** Gall  
**sculpture:** Montagna  
**slavery:** Kinzey  
**social history:** Blatt, Engle, Faragasso, Heald, Miele, O'Connell, Petravage, Rose, Snyder, Stevens, Strasser, Toothman, Wegman-French, Weinbaum  
**Spanish:** Gurulé, Munson  
**Spanish colonial:** Flores, Garate, Gomez, Gurulé, Ivey, Rock, Sanchez  
**Spanish paleography:** Rock  
**sports:** Schullery  
**suburbanization:** Lavoie, McClelland  
**technology:** DeGraaf, L., Foster, Gerdes, Herrin, Hovis, Hutchins, Lange, Lee, J., Mannikko, Noble, O'Connor, Orr  
**tourism:** Norris, Shull, Smith, J.  
**Trans-Mississippi West:** Rose  
**transportation:** Tamburro  
**U.S. Constitution:** Sutton  
**U.S. Presidents:** Wiesner  
**Underground Railroad:** Delmar, Miller, D.  
**urban history:** Davidson, Jacobs, O'Connell, Rowley, Stevens, Tagger, Unrau  
**War of 1812:** Sheads  
**Washington, DC:** Lee, A., Oates, Perry, Scott, G.  
**West Coast:** Baron  
**western peace officers:** Manning  
**Western Reserve:** Tamburro  
**women's history:** Baker, Binkley, Christianson, Derousie, Miller, L., Rose, Strasser, Updyke, Wallace, West, Williams, M.  
**World Heritage:** Flores  
**World War II:** Bearss, Butowsky, Calkins, Martinez, Shultz, Smith, T.  
**Zane Grey:** Moon

---

## STATE INDEX

**Alaska:** Beckstead, Bleakley, Branson, Clemens, Griffin, Gurcke, Houston, Hovis, Johnson, K., Kain, Lewis, Norris, Strasser  
**Arizona:** Garate, O'Brien, Travis  
**Arkansas:** Baker, Miller, L., Rogers  
**California:** Baron, Chappell, DeGraff, Evenson, Haller, Huston, Jackson - Retondo, Munson, Scolari, Snyder  
**Colorado:** Cody, Greene, Kendrick, Noble, Paige, Unrau, Wegman-French, Whissen  
**Connecticut:** Cook, L.  
**District of Columbia:** Andrus, Beall, Bearss, Boland, Burns, Burrell, Butowsky, Christianson, Davidson, Davis, Everett, Fanning, Faragasso, Feller, Felton, Foster, Galonska, Gaumer, Gossett, Grimmer, Hall, Hawke, Henry, Jacobs, Jimenez, Lange, Lavoie, Lee, A., Lee, J., Lusignan, Matthews, McClelland, McDonnell, O'Connor, Parker, Perschler, Perunko, Price, Renaud, Roberts, Savage, Scott, G., Shiffer, Shull, Shultz, Smith, J., Sprinkle, Vivian, Weber, Wheelock, Young  
**Florida:** Martin, Ogden, D.  
**Georgia:** Barrett, Binkley, Coffey, Cook, J., Gerdes, Hitchcock, Johnson, W., Marsh, Miele, Ogden, J., Rowley, Ryan, Tagger  
**Hawaii:** Martinez  
**Idaho:** Blackburn, Eckberg  
**Illinois:** Pedrotty, Townsend  
**Indiana:** Capps, Slupski  
**Iowa:** Wiesner  
**Kansas:** Frey  
**Kentucky:** Ward, R.  
**Maryland:** Alexander, Herrin, Sheads, Shives, Tamburro, Trail, Von Lunz  
**Massachusetts:** Albee, Blatt, Burke, Carlson, Colton, Derry, Frayler, Hay, Hutchins, Igleheart, O'Connell, Ofenstein, Perrault, Phillips, Scott, J., Spaulding, Sullivan, Updyke, Wallace, Weinbaum, Yocum  
**Michigan:** Urion, Valencia  
**Minnesota:** Anfinson, Graves  
**Mississippi:** Miller, C., Winschel  
**Missouri:** Eckard, Langum, Moore, Patrick, Sanfilippo  
**Montana:** Doerner, Ford, Whitacre  
**Nebraska:** Ahlgren, Arrington, Cockrell, Dickey, Franklin Weekley, Good, Hill, Kumar, Mannikko, Marshall, McCutchen, Miller, D., Sanford, Stevens  
**New Hampshire:** Duffy  
**New Jersey:** DeGraaf, A., DeGraaf, L., Jeffrey, Wirth  
**New Mexico:** Gomez, Gurulé, Ivey, Krakow, Mahr Yanez, McDermott, S., Sanchez, Sellars, Spude, Ward, G.  
**New York:** Derousie, Foppes, Futral, Hammell, Kohan, Moreno, Nelligan, Perry, Rose, Tselos, West  
**North Carolina:** Bolling, Flores, Noblitt, Stover  
**Ohio:** Honious, Roach, Winstel

---

**Oklahoma:** Manning

**Oregon:** Mark

**Pennsylvania:** Cika, Delmar, Diethorn, Fanelli, Harrison, Hartwig, Hebblethwaite, Hegeman, Houting, Kolakowsky, Kopczynski, Latschar, Long, McDermott, D., McDougall, McKnight, Montagna, Moon, Mueller, Oates, Orr, Perlman, Peterson, Pitts, Rayburn, Tobias, Toogood, Turton

**Rhode Island:** Gall

**South Carolina:** Carson, Dunkerly, Hatcher, Williams, E.

**Tennessee:** Allen, Cave, Smith, T.

**Texas:** Leonard, Lott, Murphy, Rock, Smith, D., Williams, M.

**Utah:** Werst

**Vermont:** Houghton, Mitchell

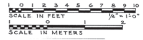
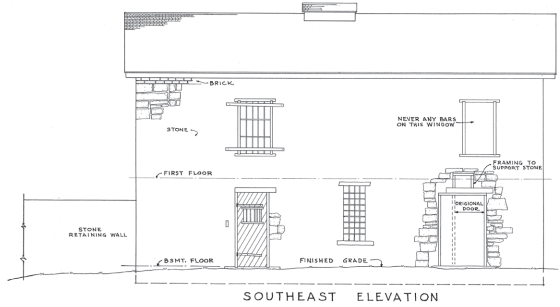
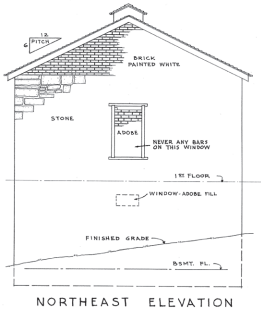
**Virgin Islands (US):** Cissel

**Virginia:** Blankenship, Calkins, Cucurullo, Depew, Engle, Givens, Jacox, Kinzey, Krick, Mink, Nosal, O'Reilly, Pfanz, Rehm, Riggs, Schroeder, Sundberg, Sutton

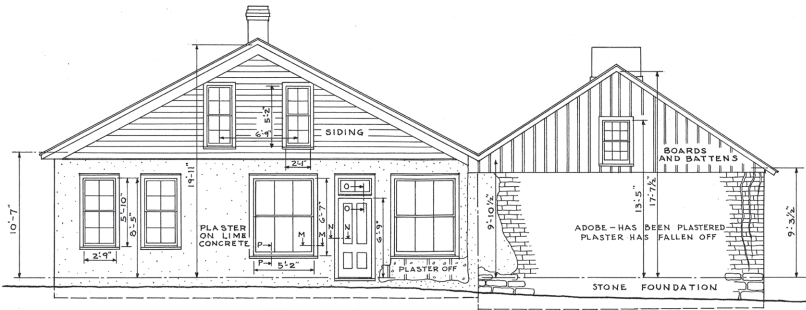
**Washington:** Brown, Louter, Luxenberg, Shine, Toothman, Vouri

**West Virginia:** Chamberlain, Fuerst, Heald, Petravage

**Wyoming:** Schullery, Whittlesey



OLD GUARD HOUSE  
FORT LARAMIE NATIONAL MONUMENT



SOUTHWEST ELEVATION  
SCALE  $\frac{3}{16}'' = 1'-0''$

SUTLER'S STORE  
FORT LARAMIE - WYOMING