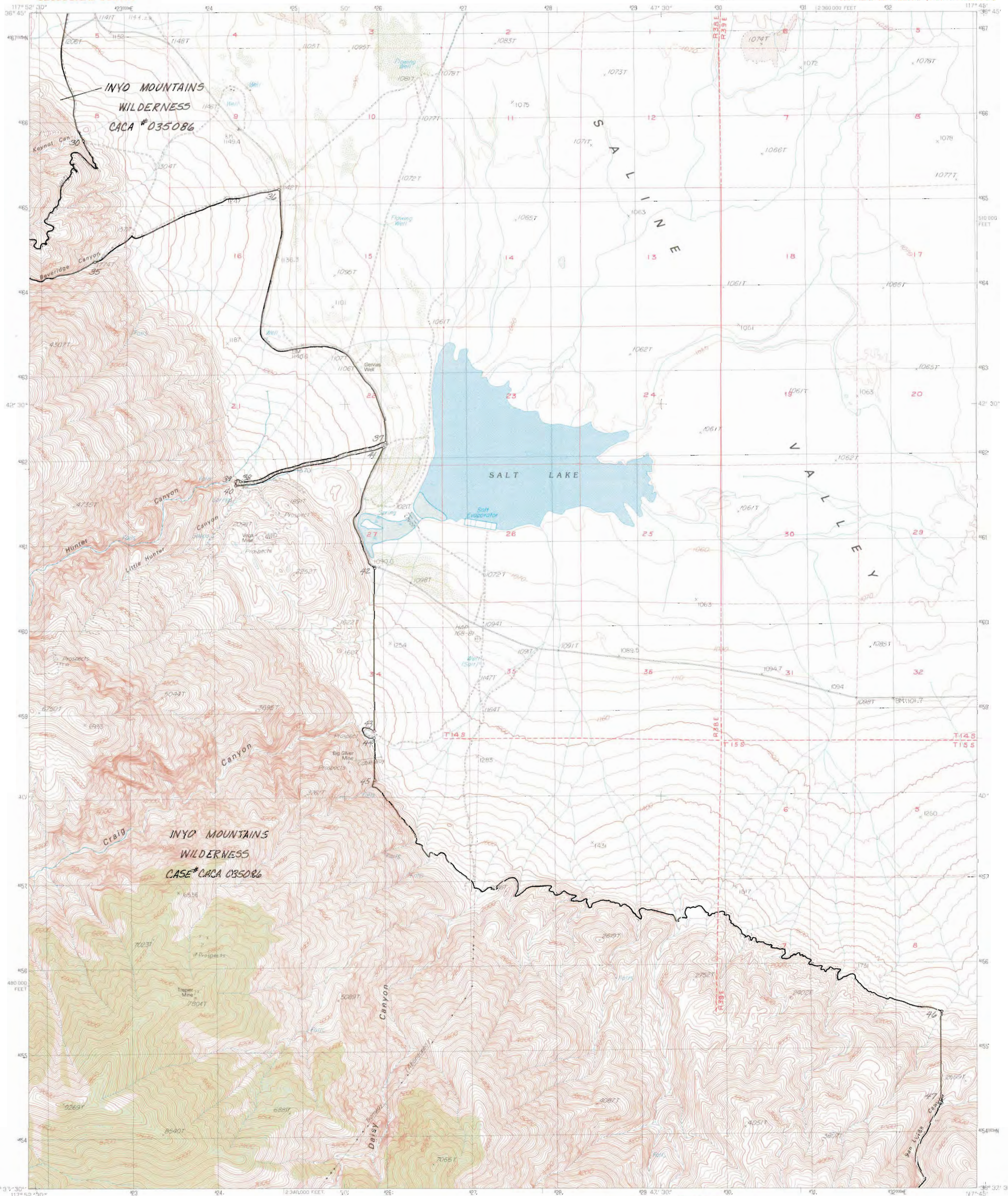
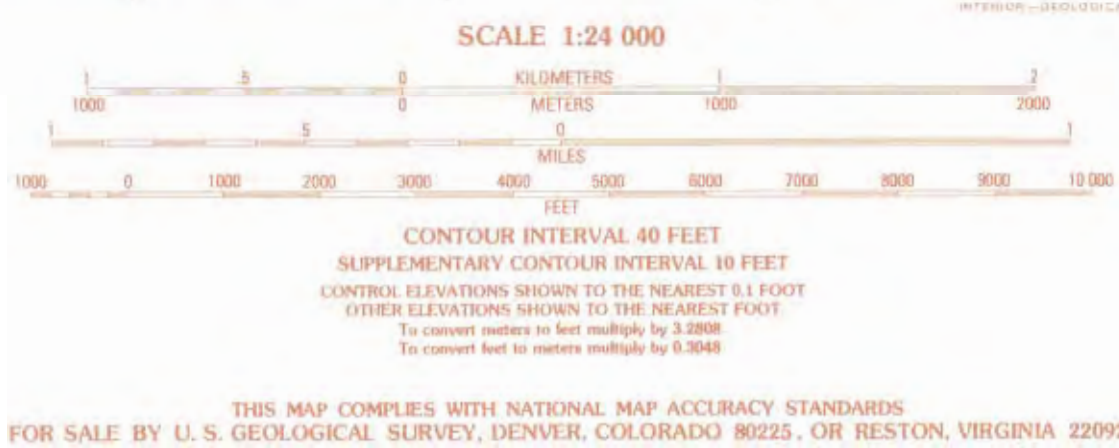


JUN 17 2005



PRODUCED BY THE UNITED STATES GEOLOGICAL SURVEY
CONTROL BY USGS, NGS/NOAA
COMPILED FROM AERIAL PHOTOGRAPHS TAKEN 1980 AND 1982
FIELD CHECKED 1984 MAP EDITED 1987
PROJECTION LAMBERT CONFORMAL CONIC
GRID 1000-METER UNIVERSAL TRANSVERSE MERCATOR ZONE 11
10,000-FOOT STATE GRID TICKS CALIFORNIA ZONE 4
UTM GRID DECLINATION 1983 WEST
1983 MAGNETIC NORTH DECLINATION 15 EAST
VERTICAL DATUM NATIONAL GEODETIC VERTICAL DATUM OF 1929
HORIZONTAL DATUM 1927 NORTH AMERICAN DATUM
To place on the predicted North American Datum of 1983,
move the projection lines as shown by dashed corner ticks
(9 meters north / 82 meters east)
There may be private inholdings within the boundaries of any
Federal and State Reservations shown on this map
Where omitted, land lines have not been established
No distinction made between houses, barns, and other buildings

PROVISIONAL MAP
Produced from original
manuscript drawings. Informa-
tion shown as of date of
photography.



ORIGINAL
FINAL
QUADRANGLE LOCATION

| | | | | | | | |
|------------------|--------------------|----------------------------|----------------|----------------------|------------------|-----------|--------------|
| 1 | 2 | 3 | 4 | 5 | 6 | 7 | 8 |
| Par Keyes Canyon | Lower Warm Springs | Wear of Teakettle Junction | New York Butte | Wear of Ubehebe Peak | Cerro Gordo Peak | Dobsonite | Nelson Range |

ADJOINING 7.5 QUADRANGLE NAMES

ROAD LEGEND

Improved Road
Unimproved Road
Trail
Interstate Route
U.S. Route
State Route

CRAIG CANYON, CALIF.
PROVISIONAL EDITION 1987
36117-F7-TF-024

