

New Mexico: State Report

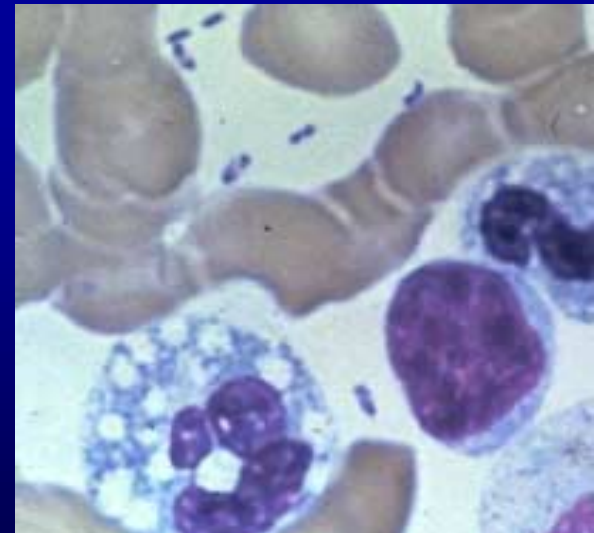
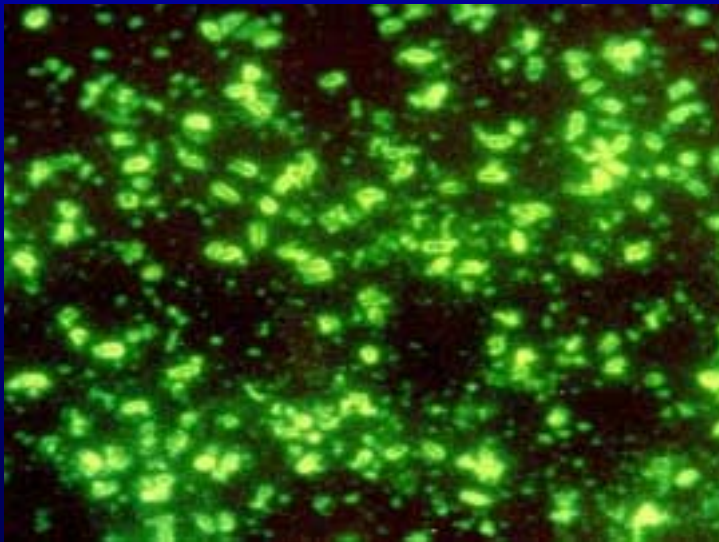
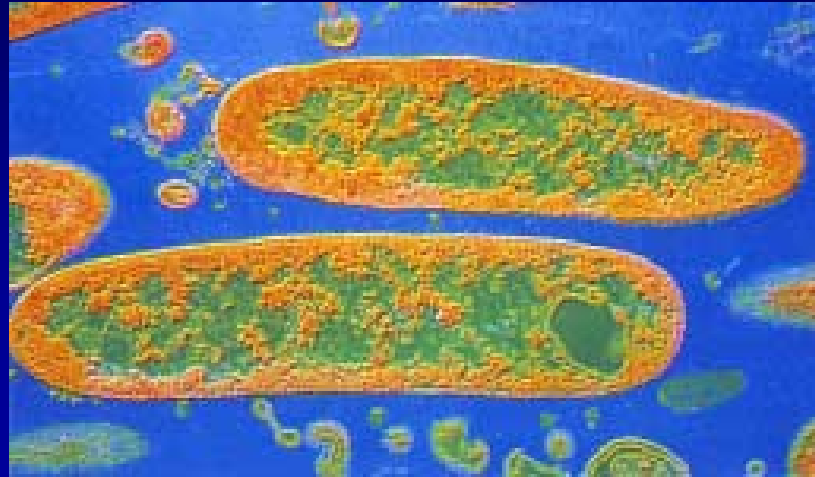
State Public Health Vector Control Conference
February, 2004

Pamela J. Reynolds

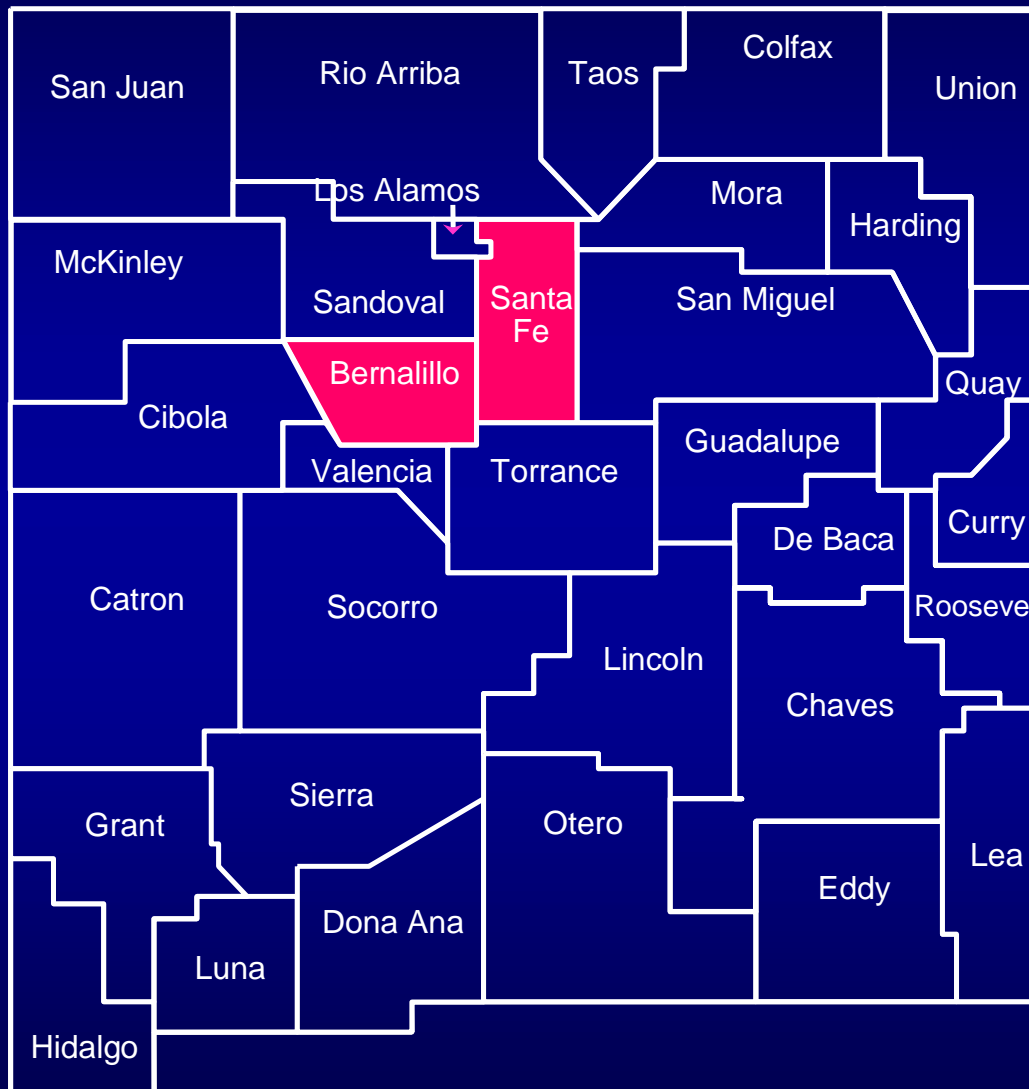
New Mexico Department of Health

Santa Fe, NM

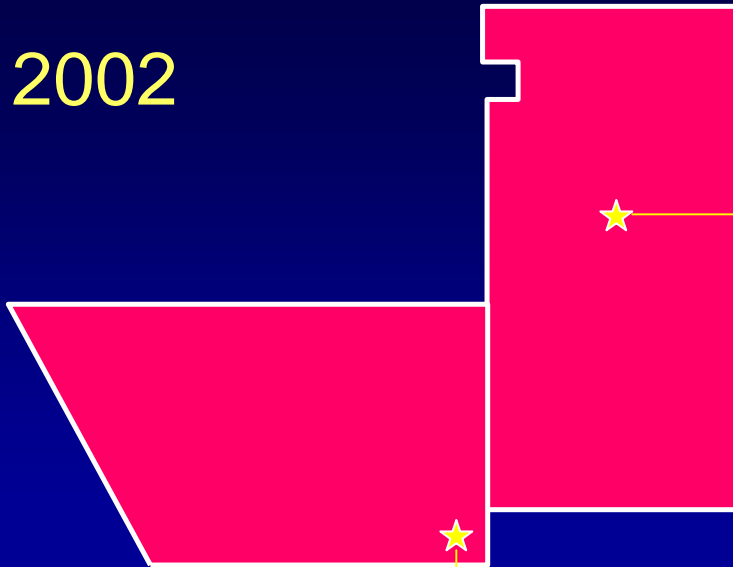
Plague



Plague Activity, New Mexico, 2002



2002



Santa Fe Co: Positive woodrat and fleas, July; 2 human cases, November



Bernalillo Co: Positive cat, November

Human Plague Cases in New Mexico 2002

Date of Onset	County	Age/Sex	Mode of Transmission	Type	Outcome	Source
11/3/02	Santa Fe	53/M	Flea bite	Bubonic/ Inguinal/ Secondary septicemia	Recovered	Plague- positive woodrat and mouse fleas
11/3/02	Santa Fe	47/F	Flea bite	Bubonic/ Inguinal	Recovered	Plague- positive woodrat and mouse fleas

CITY

Couple Remain Hospitalized With Bubonic Plague

By CECILIA M. VEGA
and TINA KELLEY

A man with bubonic plague who is fighting for his life in a Manhattan

Mr. [redacted] remained in critical condition yesterday in the intensive care unit of *Roth* Israel Medical Center. Ms. [redacted], who was also infected with plague, was upgraded to good condition. The couple, whose names were first published yesterday in *The Daily News*, arrived in New York last week and were hospitalized on Tuesday night after several days of experiencing flulike symptoms, high fevers and swollen lymph nodes. Health experts say the couple almost certainly contracted the illness in Santa Fe, one of the few places in the country where plague has been confirmed.

According to the New Mexico In-



Photographs by Associated Press

Pam Reynolds of the New Mexico State Health Department and Michael Kosoy of the Centers for Disease Control and Prevention dissected rodents yesterday at the Santa Fe home of [redacted]

Co
Or

B
City
tentativ
proper
part of
other t
to be t
City
Bloom
like th
proper
uary t
would
of abo
billion
Alth
yet to
Counc
meet
Counc
vised
Thurs
first
decad
Wh
day
creas
durin
geste
mem
"p
"14



Plague-infected fleas were collected from mice and woodrats on patient's property and nearby hiking trail



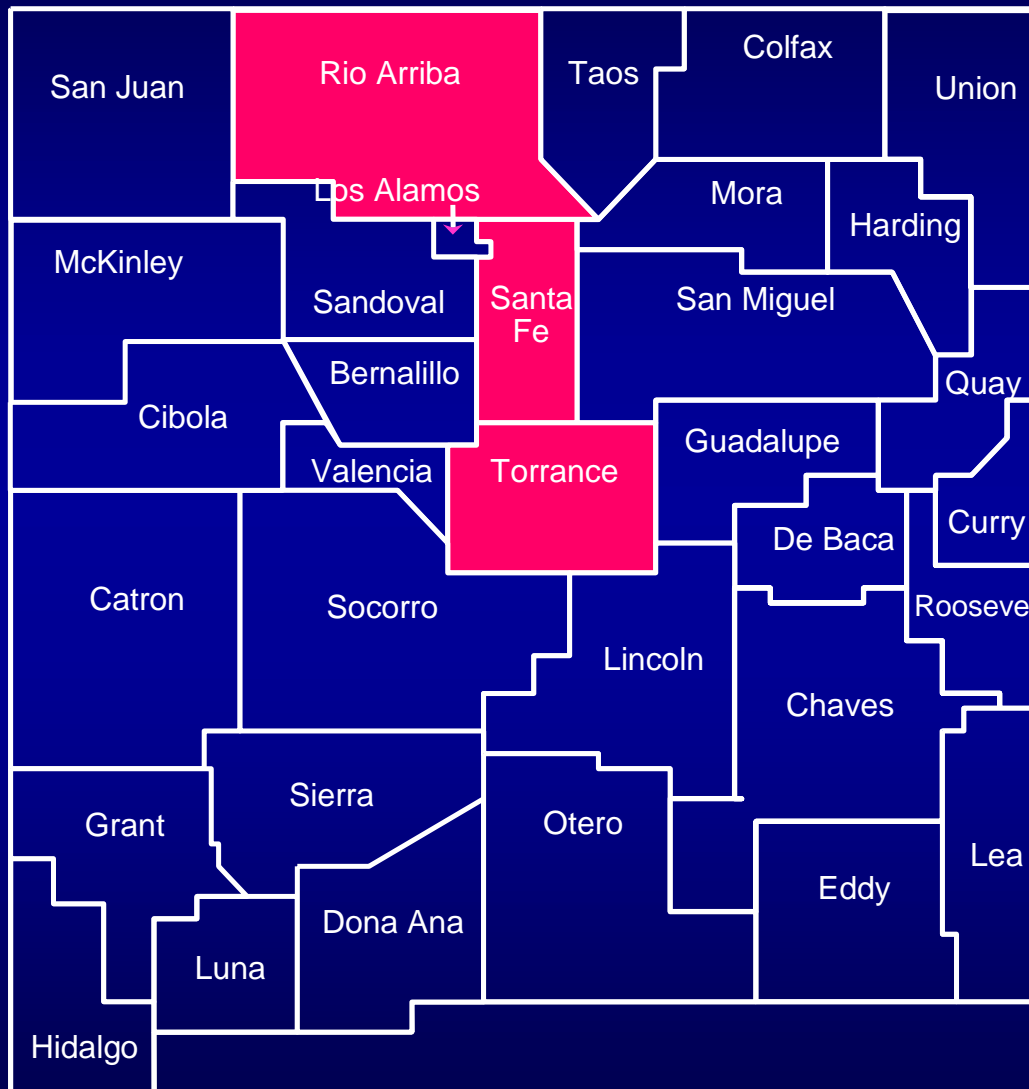
Warning signs were posted at access points to hiking trail

In collaboration with
CDC-Ft. Collins,
longitudinal plague study
has been established in
Eldorado, Santa Fe Co.

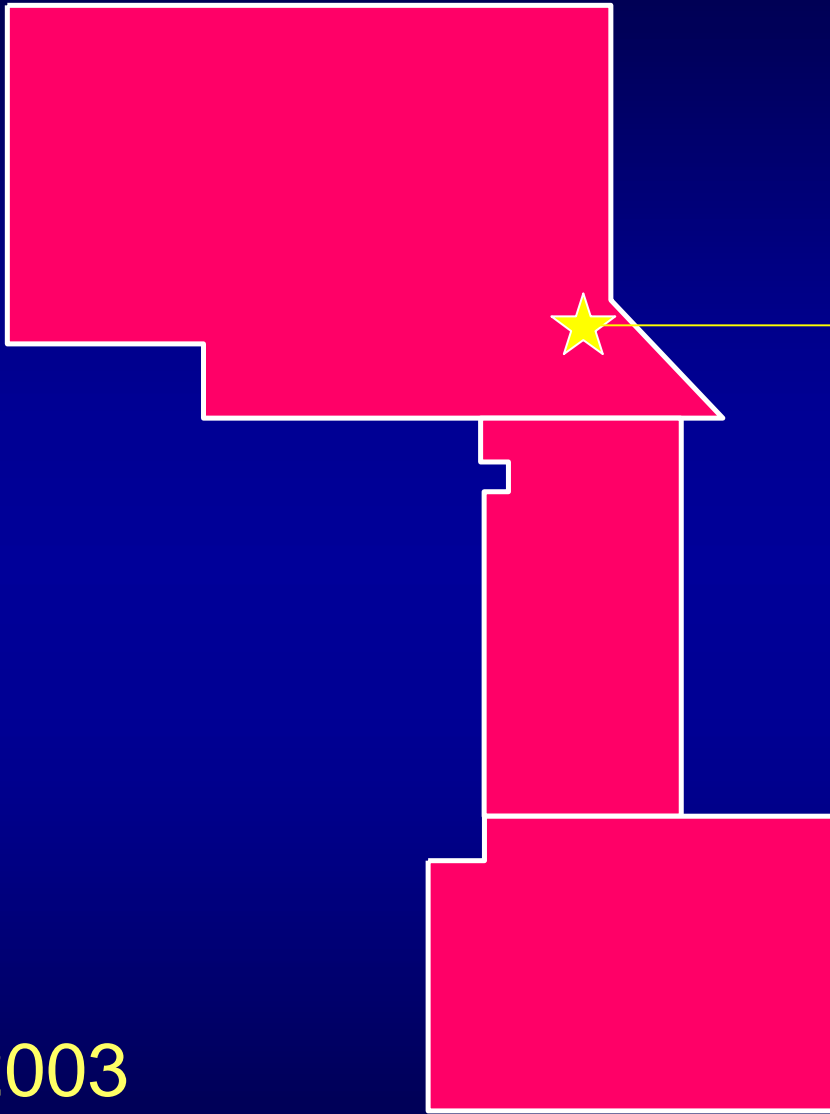
Traps are set at woodrat
nests monthly, animals
ear-tagged, blood and
fleas collected.



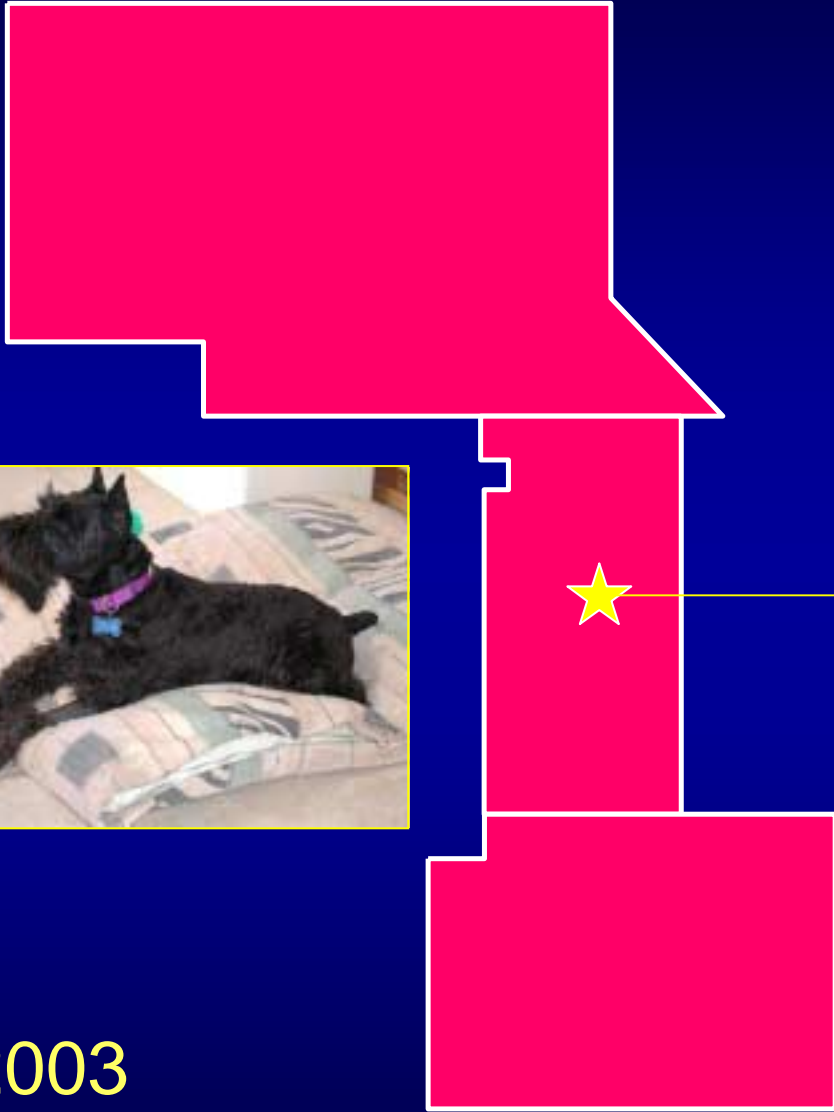
Plague Activity, New Mexico, 2003



2003

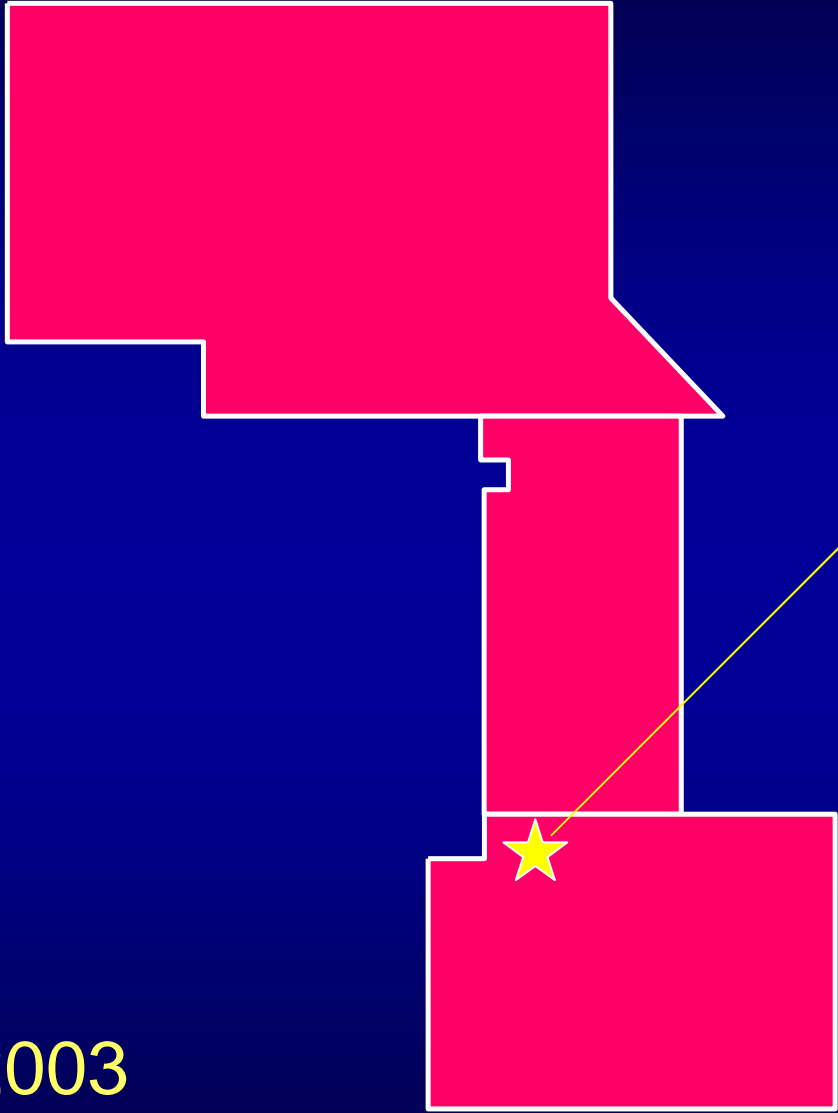


Rio Arriba Co:
1 dog, July
1 mouse antibody-
positive



2003

Santa Fe Co:
6 cats
3 dogs
6 woodrats
3 rock squirrels
1 cottontail
3 mice
7 flea pools
January - December



Torrance Co:
1 human case, June

2003

Human Plague in New Mexico 2003

Date of Onset	County	Age/Sex	Mode of Transmission	Type	Outcome	Source
6/1/03	Torrance	70/F	Flea bite	Bubonic/ Inguinal	Recovered	Undetermined; patient's dog antibody positive



- All rodents and flea pools plague-negative
- Patient's dogs free-roaming; Jessie 1:256
- History of prairie dog die-offs in area.



Hantavirus Pulmonary Syndrome

Total Cases: 60



HPS Case November 2003

- First case in NM since June, 2001
- 37 year-old Rio Arriba Co. woman
- Onset November 28
- Recovered



Rodent trapping conducted at home, worksite

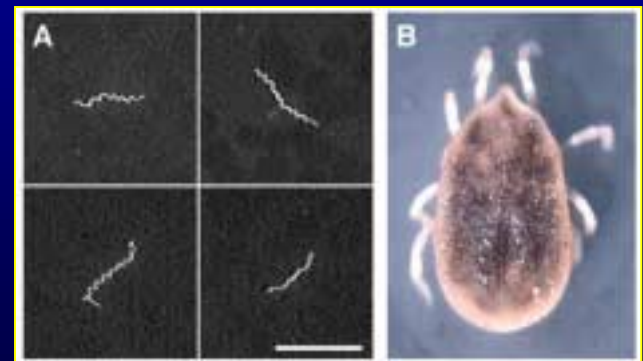


- Home likely source
- Only one vole trapped in 200 trap-nights



Tick-Borne Relapsing Fever

- Relapsing Fever Outbreak, July-August 2002
 - San Juan County family gathering
 - 11 confirmed cases
 - 1 infected *Ornithodoros hermsi* collected
 - MMWR August 29, 2003



Tularemia

- 3 human tularemia cases, 2002:
 - Associated with skinning rabbits
- No human cases in 2003
- Animal activity (rabbits, pets) concentrated in Santa Fe County



Arbovirus Surveillance in New Mexico, 2002-2003

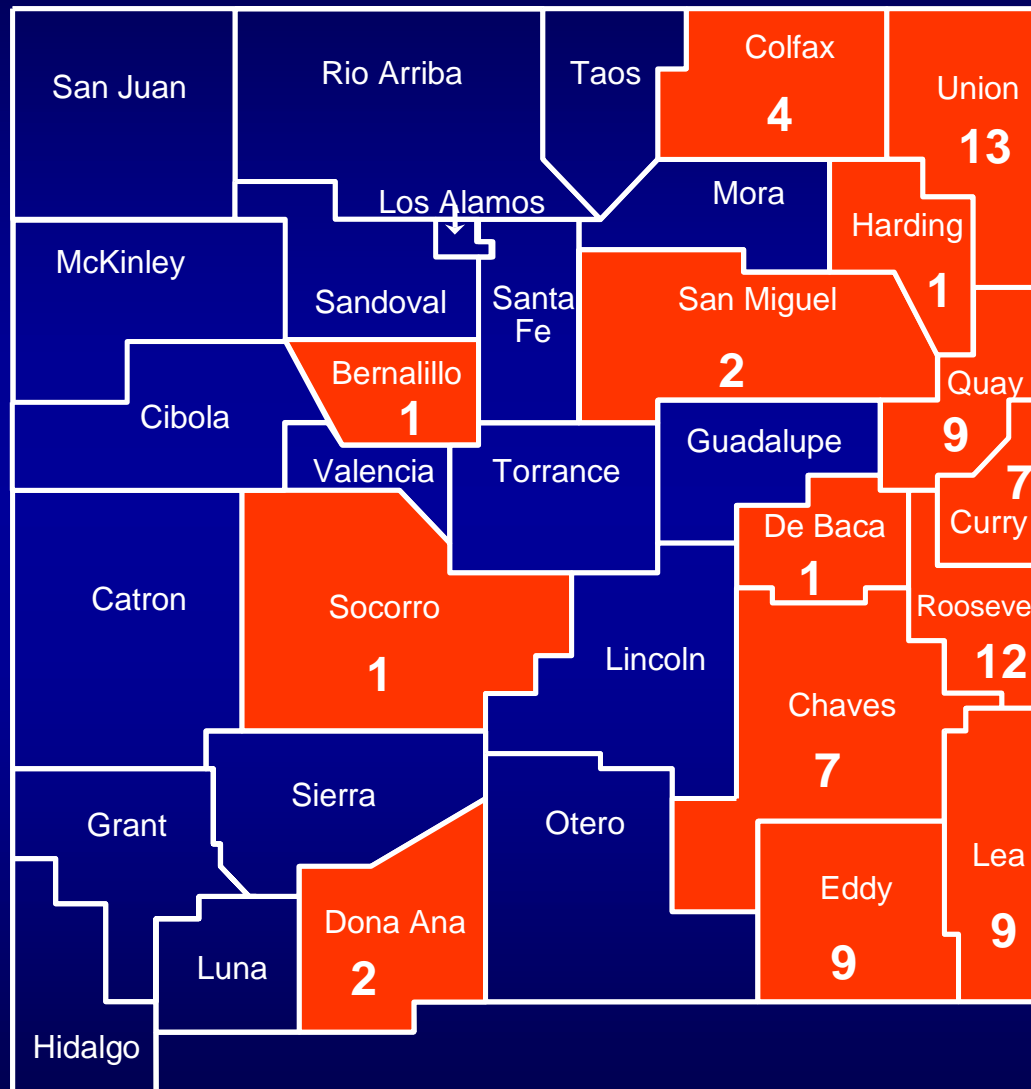
- Human Case Surveillance
 - none detected in 2002
 - first WNV case July 2003
- Veterinary Surveillance
- Dead Bird Surveillance
 - less emphasis in 2003
- Mosquito Surveillance



Veterinary Surveillance



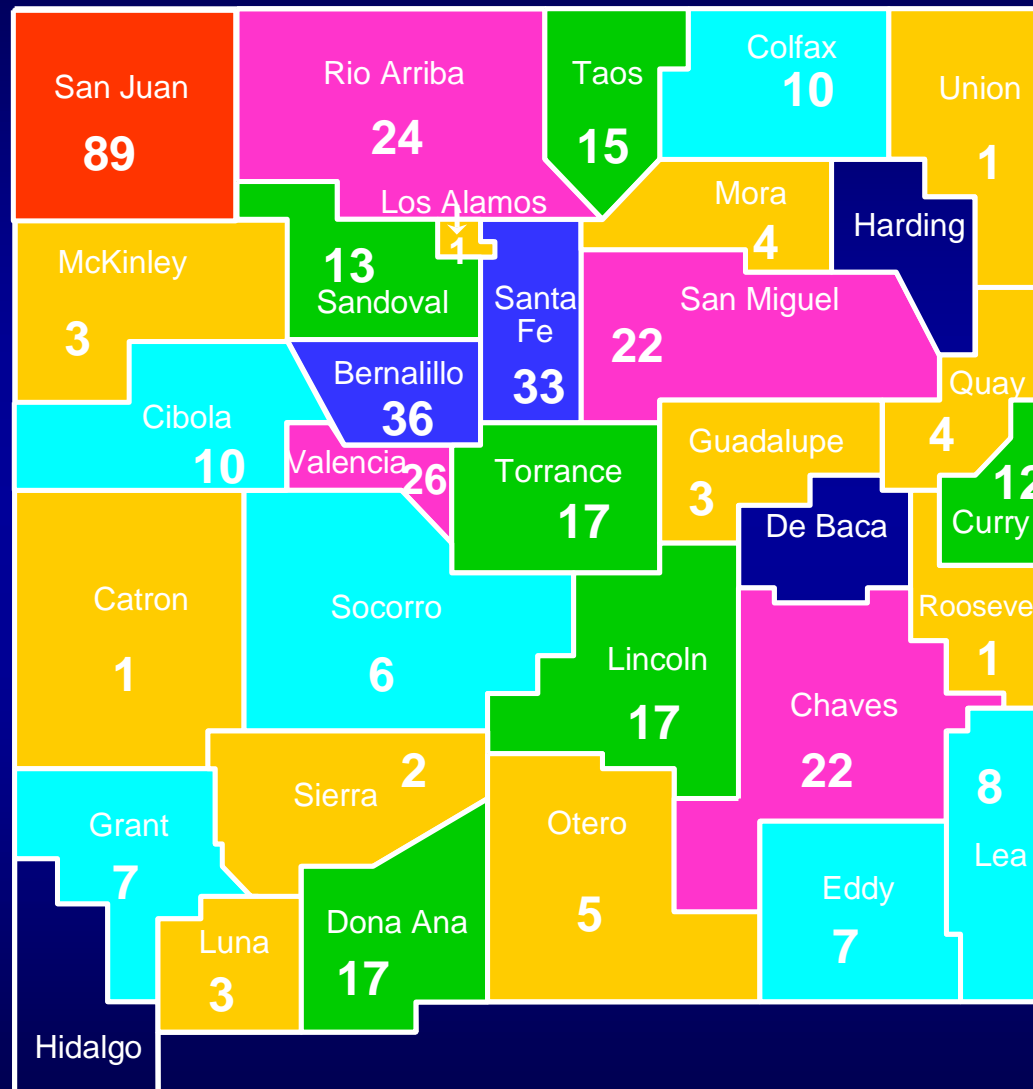
Equine Cases, West Nile Virus, 2002



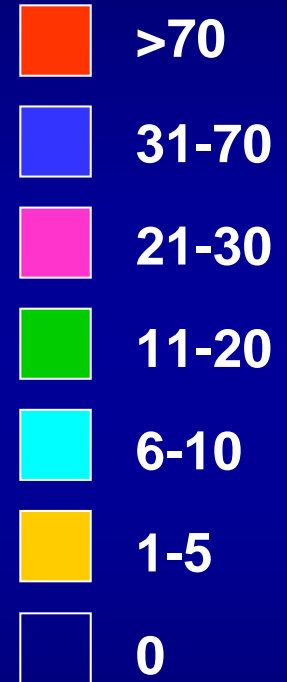
Positive horse
(# of cases)

N = 78

Equine Cases, West Nile Virus, 2003



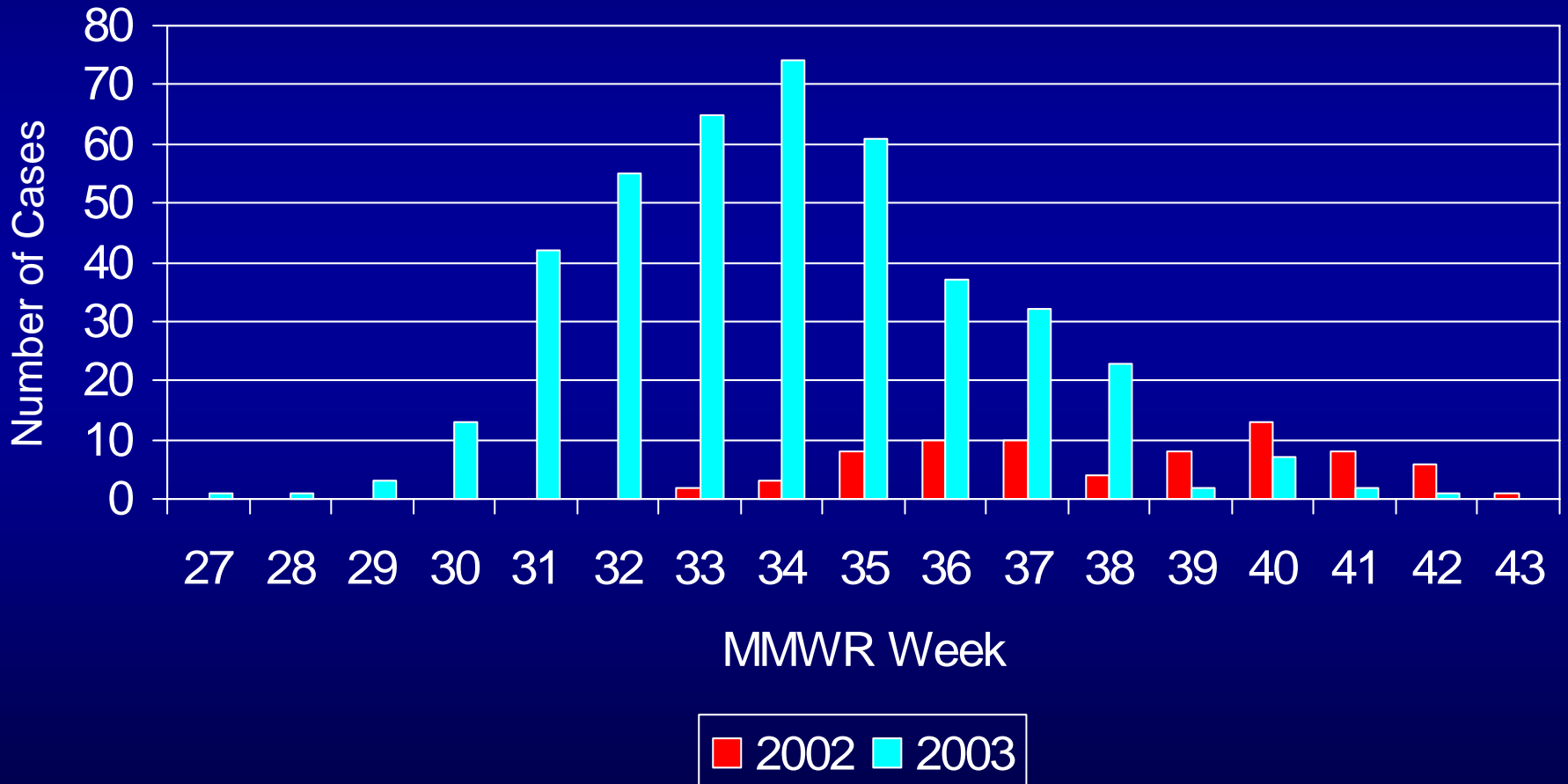
Number of Cases



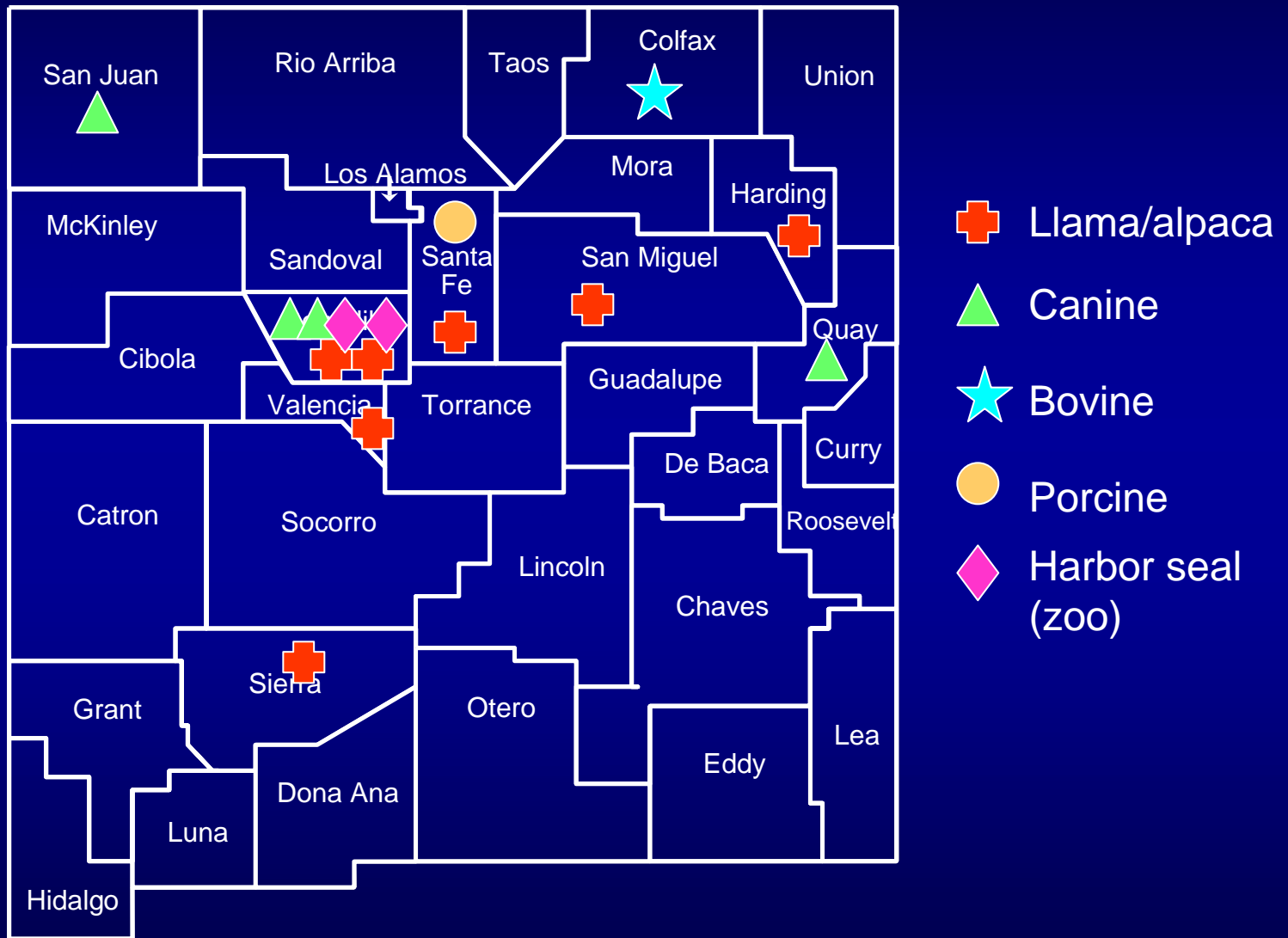
An additional 19 cases county unknown for total of 438 cases

N = 419

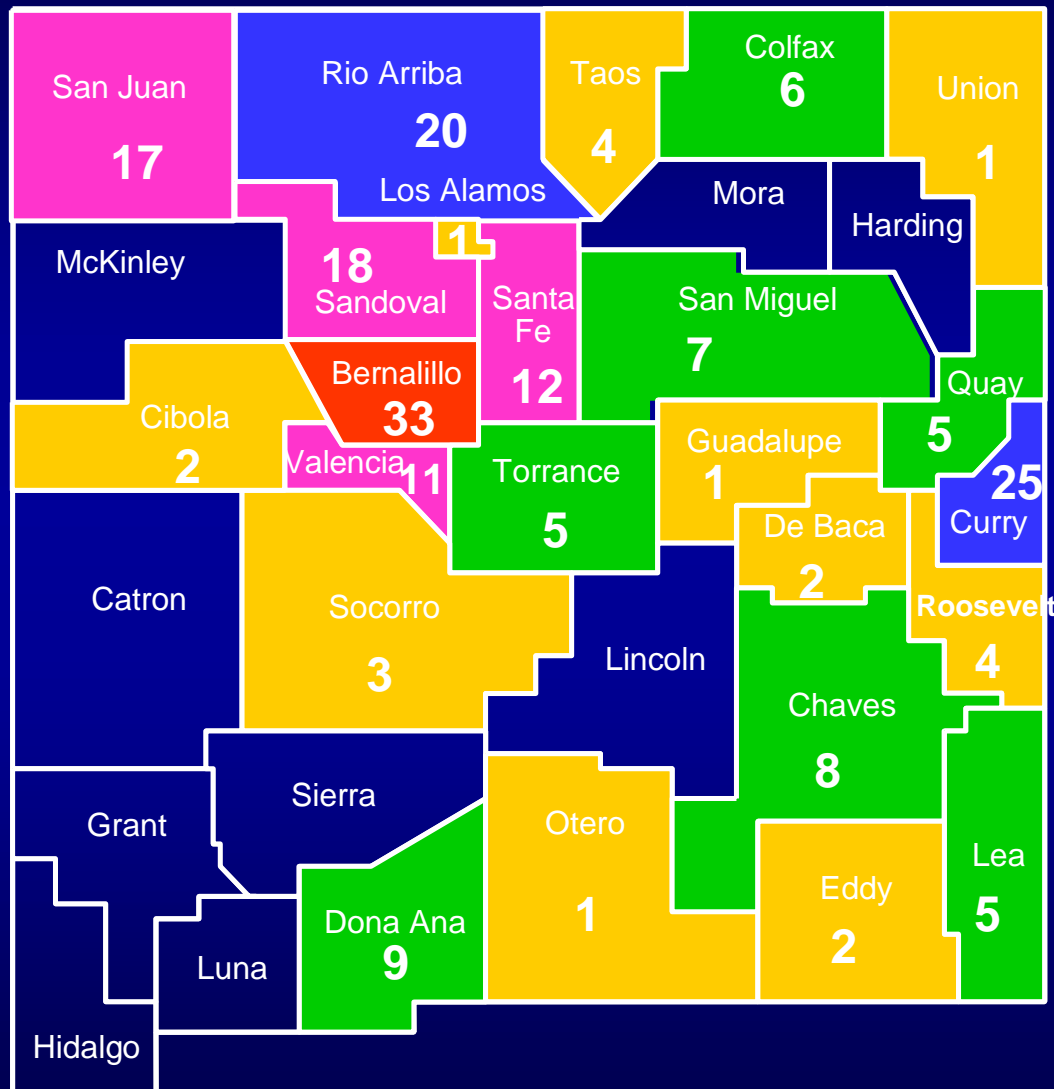
Equine Cases by Onset Week, 2002-2003



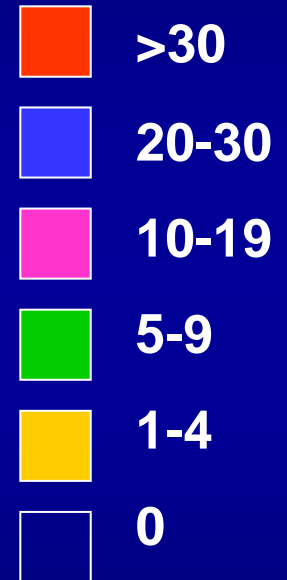
Other WNV Positive Animals, New Mexico, 2003



Human cases West Nile Virus, 2003

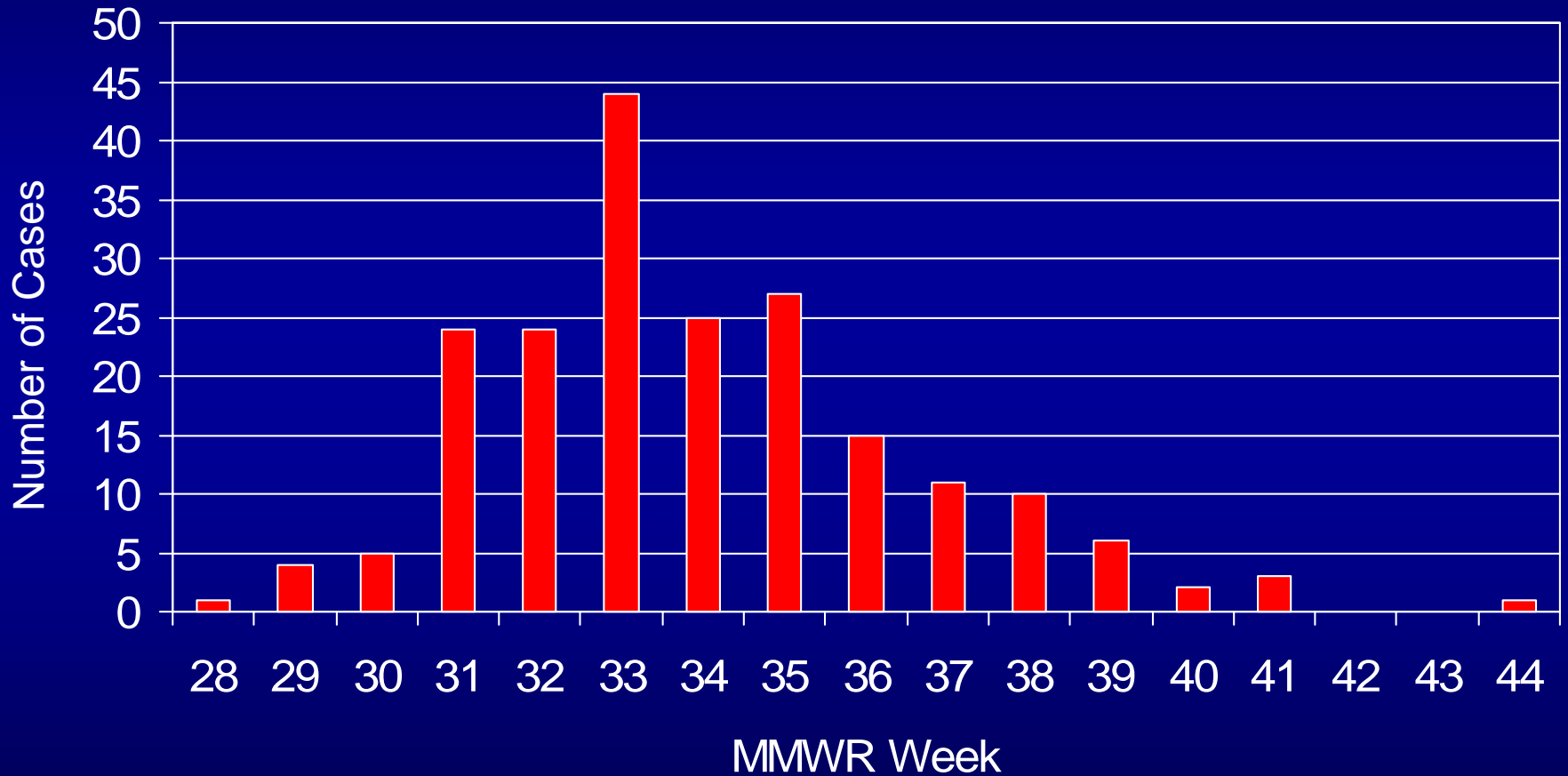


Number of Cases



N = 202

Human Cases of WNV by Onset Week



N=202

Human WNV Case Demographics

- 202 Total Cases
- Male: 98 (49%)
- Female: 104 (51%)
- Uncomplicated fever: 132 (65%)
- Meningoencephalitis: 70 (35%)

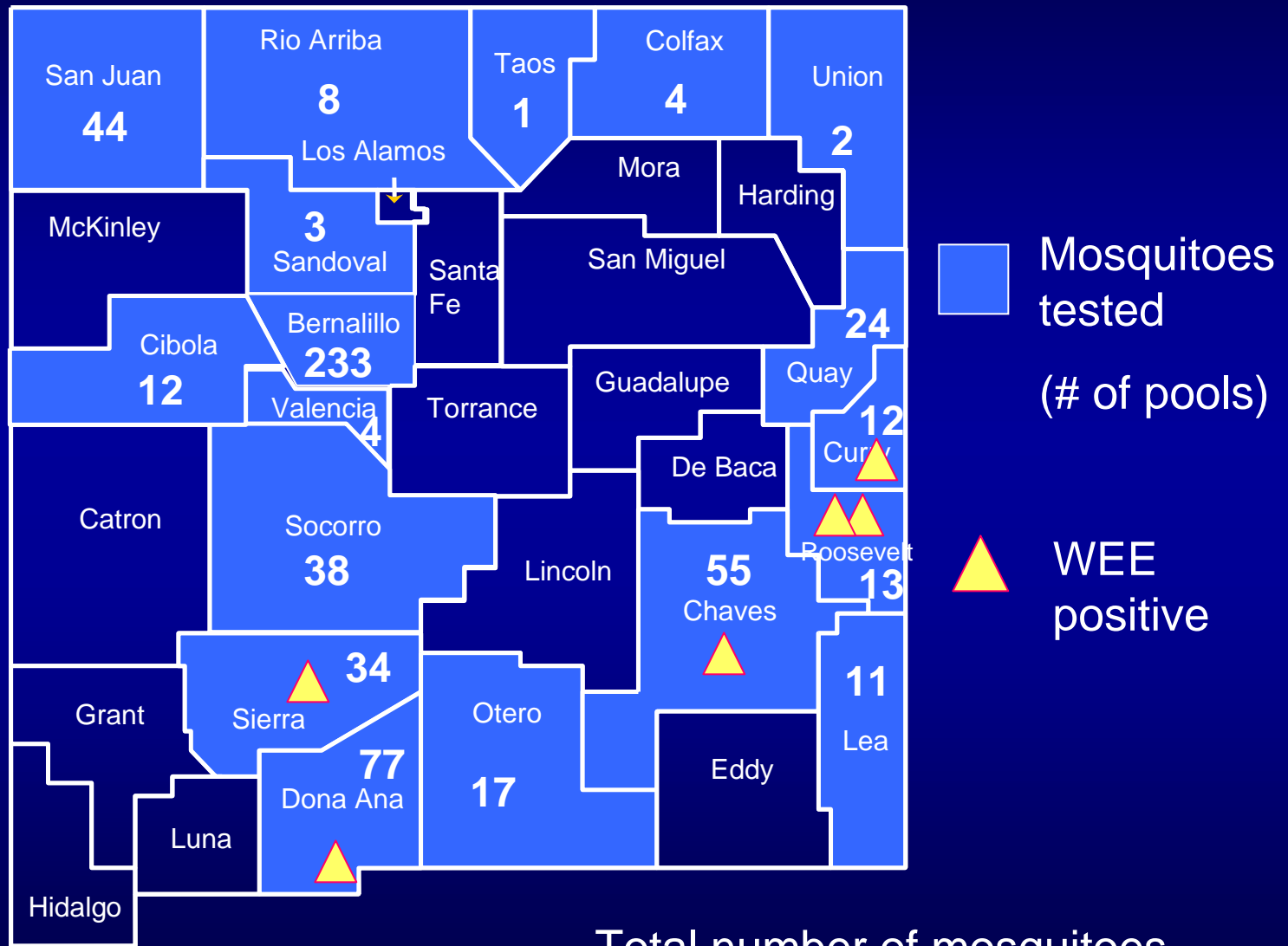
Human WNV Case Demographics

- Fever Cases:
 - Median age 47, range 3 – 87
- M/E Cases:
 - Median age 55, range 4 – 93
- Fatalities: 4 (2% of total, 6% of M/E cases)
- Ages of fatal cases: 76 – 88 years

Mosquito Surveillance

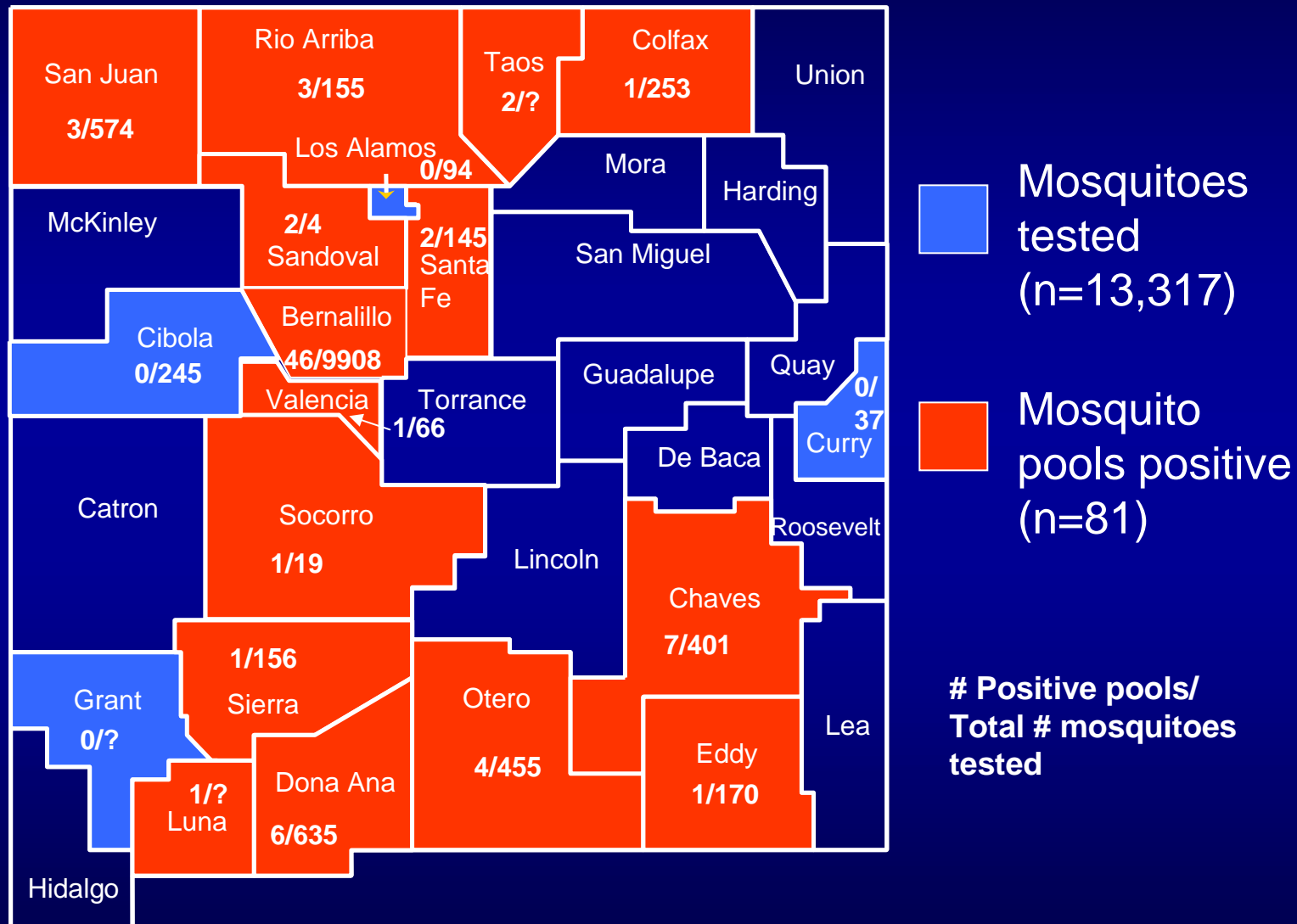


Mosquito Results, New Mexico, 2002



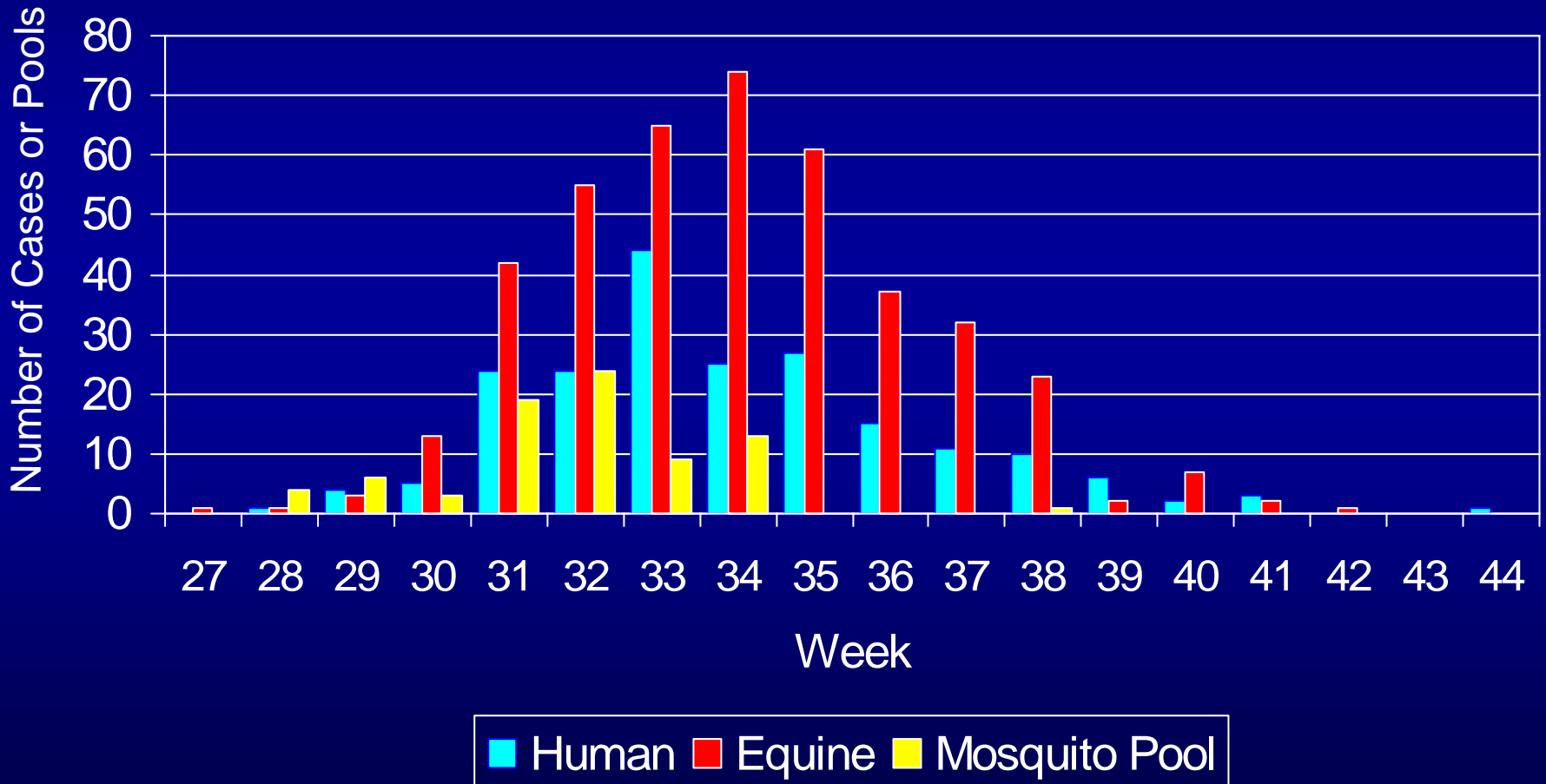
Total number of mosquitoes tested = 7,900

West Nile Virus-infected Mosquitoes New Mexico, 2003



Note: not all sampling data or results have been received to date

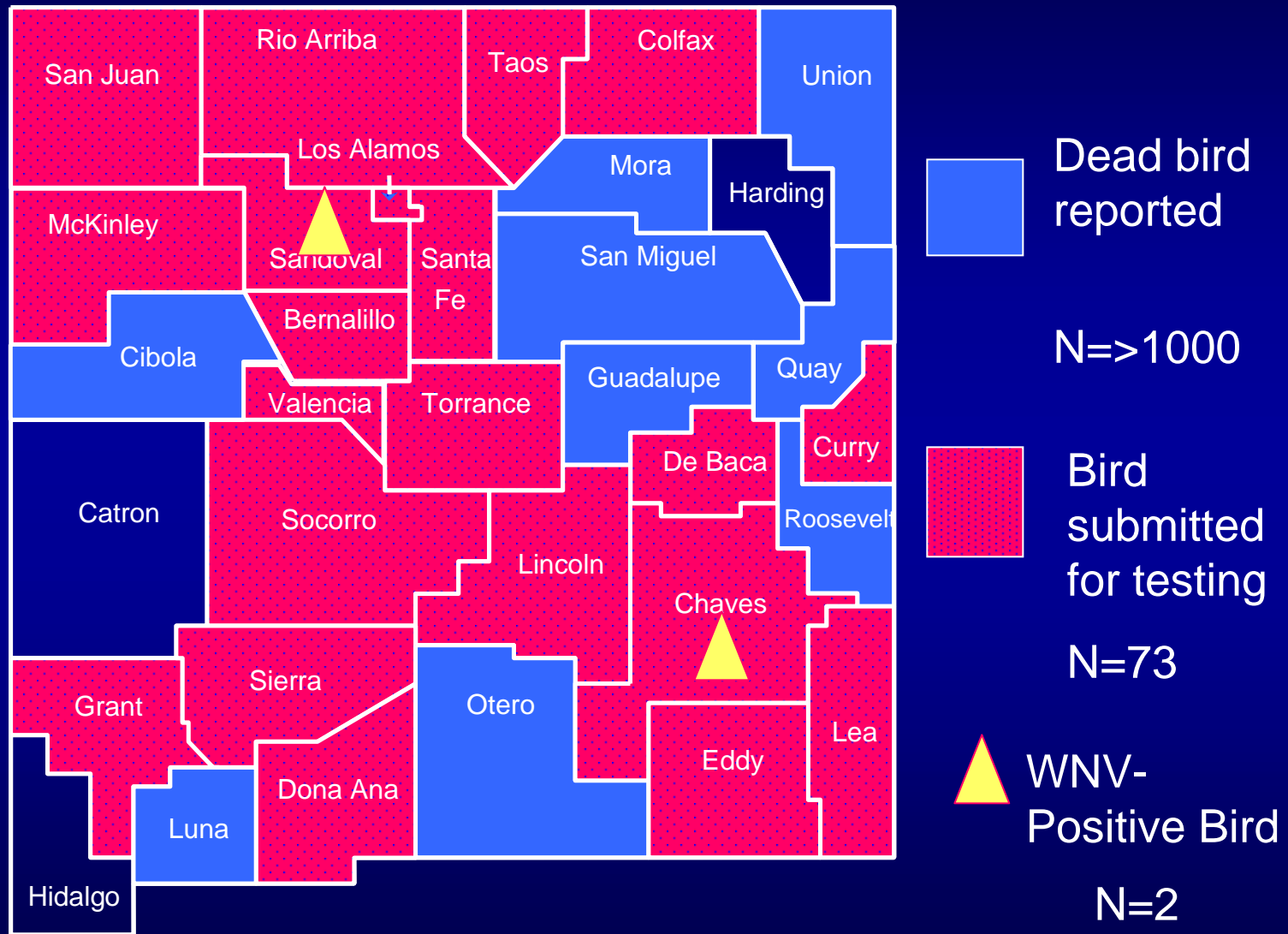
Positive Humans, Horses and Mosquitoes by Onset Week, 2003



Avian Surveillance

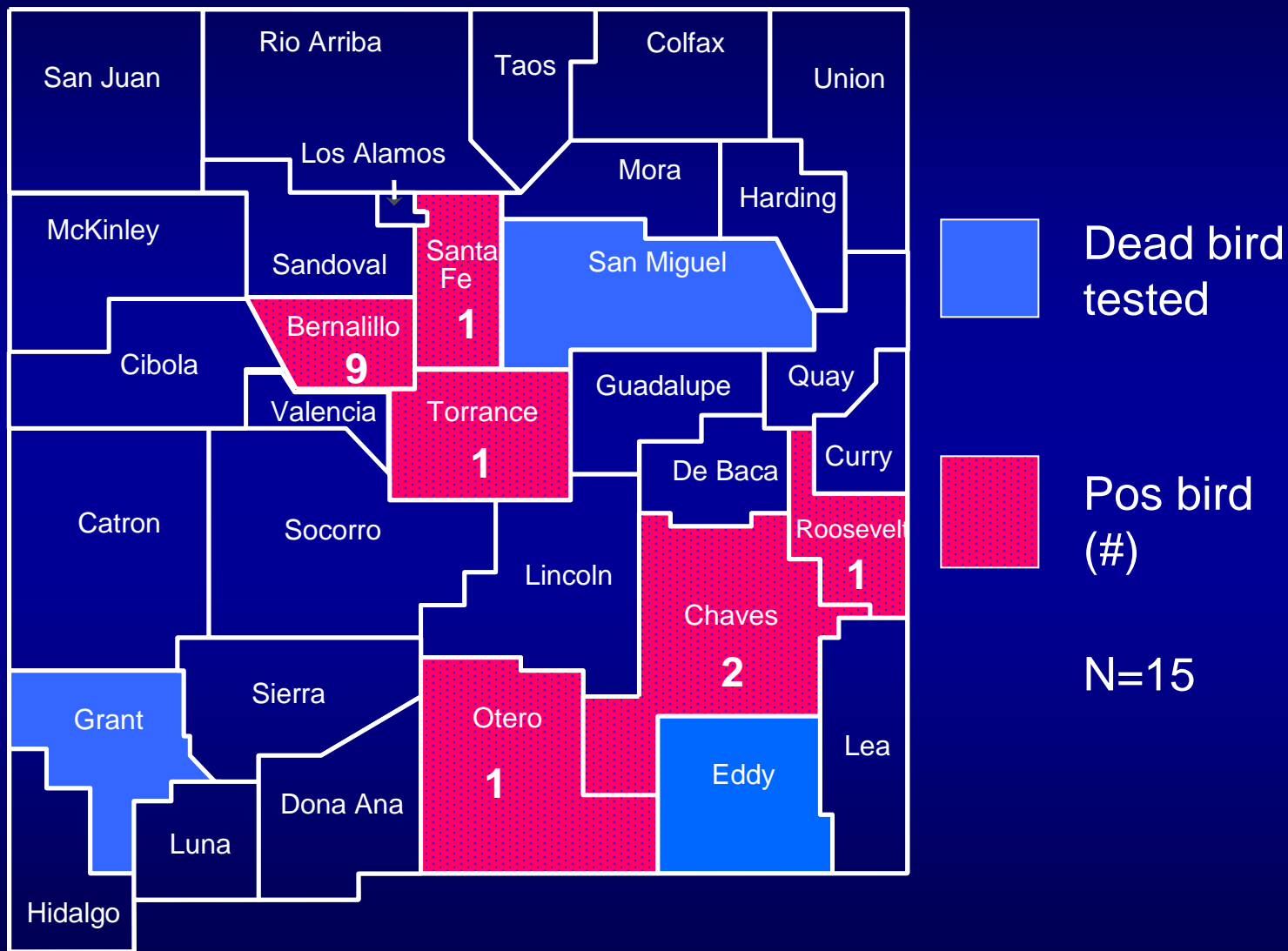


Avian Surveillance, New Mexico, 2002



(Earliest positive collected
8/28/02; reported 9/13/02)

Avian Surveillance, New Mexico, 2003



(Earliest positive collected 7/14/03)

