

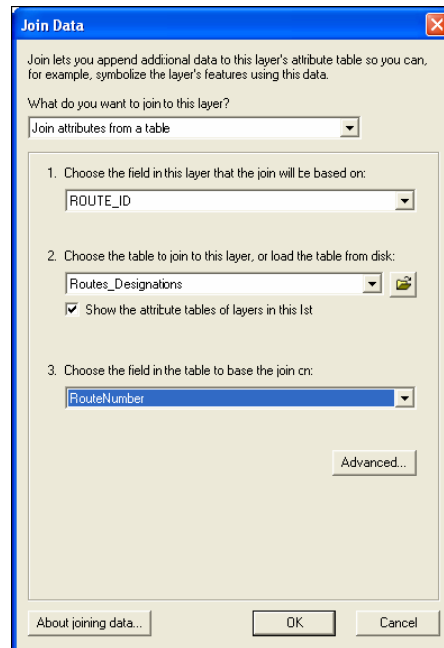
Arizona Strip District Office Route Designation Database Documentation

Trans_asdo contains both route inventory data and a route network that is designed to be linked to a route designation database. This database ([ASDO_FEIS_Route_Designation.mdb](#)), contains proposed route designations. This document contains the process for making this link and the field definitions of the Microsoft Access database.

The Process

A Route Network was generated in ARCINFO Workstation and is embedded in trans_asdo as DESIGNATED. This network can be linked to the Route Designation database to spatially portray proposed designations for individual routes for each of the ASDO FEIS alternatives.

This can be done in ESRI's ArcGIS Suite using ArcMap. When you add trans_asdo GIS layer to ArcMap, drill down until you can add [route.designated](#). Under the properties of the GIS layer, click on the tab for 'Joins & Relates'. Under 'Joins', and click 'Add'. Choose 'Route_Id' for the field to use from the GIS layer. Under step 2, navigate to the access database called '[ASDO_FEIS_Route_Designation.mdb](#)'. Drill down and select 'Route_Designations' table. Under step 3, choose RouteNumber. Then click 'OK'.



You can now display the GIS data in any number of ways based on the new information from the Access Database.

For more information of the Route Evaluation and Potential Designation Process, please refer to Appendix 2.T in the Arizona Strip Proposed Plan/Final EIS Document. This dataset was prepared and acquired for use in the ASDO resource management planning process.

Field Definitions for Access Database: ASDO FEIS Route Designations.mdb

1. Field Definitions – Routes(Table)

1. Field Definitions – Routes_Designations (Table)
 - a. RouteNumber
 - i. Identifies individual routes that are part of the route designation process. This is the attribute field that is used to link to GIS.
 - b. AgencyRouteName
 - i. Identifies a secondary route identification linked to agency-specific naming convention (name or number).
 - c. B
 - i. Identifies the designation for alternative B (O=Open, MO=Mitigate Open, L=Limit, ML=Mitigate Limit, C=Closed)
 - d. B_Category
 - i. Identifies a statement to indicate the category of the designation.
 - e. B_User
 - i. Identifies any user type limits that may apply when the designation is L or ML for alternative B.
 - f. B_Trans
 - i. Identifies any transportation type limits that may apply when the designation is L or ML for alternative B.
 - g. B_Season
 - i. Identifies any seasonal limits that may apply when the designation is L or ML for alternative B.
 - h. B_Other
 - i. Identifies any other limits that may apply when the designation is L or ML for alternative B.
 - i. B_MO_Mitigation
 - i. Identifies the mitigations when the designation is MO for alternative B.
 - j. B_ML_Mitigation
 - i. Identifies the mitigations when the designation is ML for alternative B.
 - k. B_Motorized_Closure_From
 - i. Identifies the specific start and end dates (if stated) of a motorized closure for a L or ML designation for alternative B.
 - l. B_Motorized_Closure_Other
 - i. Identifies the general timeframe for motorized closure (if stated) for a L or ML designation for alternative B (e.g. lambing season).
 - m. B_Closure_From
 - i. Identifies the specific start and end dates (if stated) of a closure for a L or ML designation for alternative B.
 - n. B_Closure_Other
 - i. Identifies the general timeframe for closure (if stated) for a L or ML designation for alternative B (e.g. lambing season).

- o. C
 - i. Identifies the designation for alternative C (O=Open, MO=Mitigate Open, L=Limit, ML=Mitigate Limit, C=Closed)
- p. C_Category
 - i. Identifies a statement to indicate the category of the designation.
- q. C_User
 - i. Identifies any user type limits that may apply when the designation is L or ML for alternative C.
- r. C_Trans
 - i. Identifies any transportation type limits that may apply when the designation is L or ML for alternative C.
- s. C_Season
 - i. Identifies any seasonal limits that may apply when the designation is L or ML for alternative C.
- t. C_Other
 - i. Identifies any other limits that may apply when the designation is L or ML for alternative C.
- u. C_MO_Mitigation
 - i. Identifies the mitigations when the designation is MO for alternative C.
- v. C_ML_Mitigation
 - i. Identifies the mitigations when the designation is ML for alternative C.
- w. C_Motorized_Closure_From
 - i. Identifies the specific start and end dates (if stated) of a motorized closure for a L or ML designation for alternative C.
- x. C_Motorized_Closure_Other
 - i. Identifies the general timeframe for motorized closure (if stated) for a L or ML designation for alternative C (e.g. lambing season).
- y. C_Closure_From
 - i. Identifies the specific start and end dates (if stated) of a closure for a L or ML designation for alternative C.
- z. C_Closure_Other
 - i. Identifies the general timeframe for closure (if stated) for a L or ML designation for alternative C (e.g. lambing season).
- aa. D
 - i. Identifies the designation for alternative D (O=Open, MO=Mitigate Open, L=Limit, ML=Mitigate Limit, C=Closed)
- bb. D_Category
 - i. Identifies a statement to indicate the category of the designation.
- cc. D_User
 - i. Identifies any user type limits that may apply when the designation is L or ML for alternative D.
- dd. D_Trans
 - i. Identifies any transportation type limits that may apply when the designation is L or ML for alternative D.

- ee. D_Season
 - i. Identifies any seasonal limits that may apply when the designation is L or ML for alternative D.
- ff. D_Other
 - i. Identifies any other limits that may apply when the designation is L or ML for alternative D.
- gg. D_MO_Mitigation
 - i. Identifies the mitigations when the designation is MO for alternative D.
- hh. D_ML_Mitigation
 - i. Identifies the mitigations when the designation is ML for alternative D.
- ii. D_Motorized_Closure_From
 - i. Identifies the specific start and end dates (if stated) of a motorized closure for a L or ML designation for alternative D.
- jj. D_Motorized_Closure_Other
 - i. Identifies the general timeframe for motorized closure (if stated) for a L or ML designation for alternative D (e.g. lambing season).
- kk. D_Closure_From
 - i. Identifies the specific start and end dates (if stated) of a closure for a L or ML designation for alternative D.
- ll. D_Closure_Other
 - i. Identifies the general timeframe for closure (if stated) for a L or ML designation for alternative D (e.g. lambing season).
- mm. E
 - i. Identifies the designation for alternative E (O=Open, MO=Mitigate Open, L=Limit, ML=Mitigate Limit, C=Closed)
- nn. E_Category
 - i. Identifies a statement to indicate the category of the designation.
- oo. E_User
 - i. Identifies any user type limits that may apply when the designation is L or ML for alternative E.
- pp. E_Trans
 - i. Identifies any transportation type limits that may apply when the designation is L or ML for alternative E.
- qq. E_Season
 - i. Identifies any seasonal limits that may apply when the designation is L or ML for alternative E.
- rr. E_Other
 - i. Identifies any other limits that may apply when the designation is L or ML for alternative E.
- ss. E_MO_Mitigation
 - i. Identifies the mitigations when the designation is MO for alternative E.

- tt. E_ML_Mitigation
 - i. Identifies the mitigations when the designation is ML for alternative E.
- uu. E_Motorized_Closure_From
 - i. Identifies the specific start and end dates (if stated) of a motorized closure for a L or ML designation for alternative E.
- vv. E_Motorized_Closure_Other
 - i. Identifies the general timeframe for motorized closure (if stated) for a L or ML designation for alternative E (e.g. lambing season).
- ww. E_Closure_From
 - i. Identifies the specific start and end dates (if stated) of a closure for a L or ML designation for alternative E.
- xx. E_Closure_Other
 - i. Identifies the general timeframe for closure (if stated) for a L or ML designation for alternative E (e.g. lambing season).