

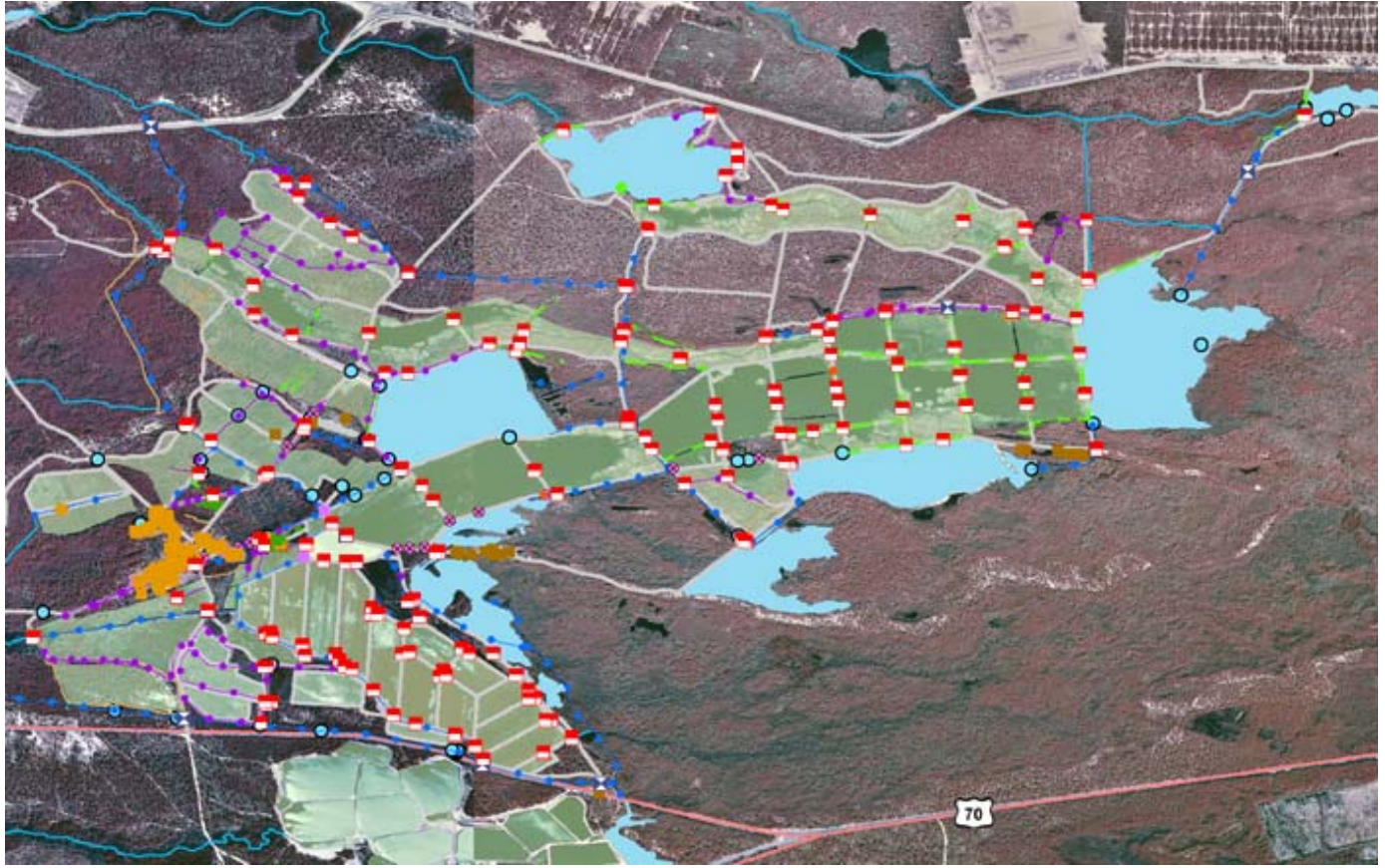
Cultural Resources GIS and Historic American Landscapes Survey: Large-Scale Landscape Documentation at Historic Whitesbog

Beginning in 2002, the Cultural Resource GIS Facility (CRGIS) partnered with the Historic Whitesbog Preservation Trust and the Historic American Landscapes Survey (HALS) to document the evolution of the Whitesbog cranberry and blueberry cultivation fields and processes. Traditional documentation methods used by the Historic American Buildings Survey (HABS), the Historic American Engineering Record (HAER), and HALS, such as large format photography and measured drawings could not capture the full context and extent of such a complicated and expansive landscape.

Using GPS and GIS, CRGIS captured the critical features of the landscape throughout its long use from the mid 18th Century to the present. These elements, focusing on the control of water in the landscape, tell the story of changing technologies applied to cranberry and blueberry cultivation. Combined with historic and current aerial photographs, site managers and historians can clearly see the landscape change over time. Ultimately, the combination of GPS and GIS will provide new methods of documenting large landscapes, such as Whitesbog. The data produced as documentation will also serve as a management tool for the Whitesbog Preservation Trust, in addition to acting as a tool to educate the public about this historic site.



Historic



Modern