

**Clubbing Rates.**

The Republican and Louisville Commercial, 1 year, \$1 25.  
The Republican and the Courier Journal, 1 year, \$1 25.  
The Republican and the Toledo (O) Blade, 1 year, \$1 25.  
The Republican and Louisville Dispatch, 1 year, \$1 25.  
The Republican and the Globe Democrat, 1 year, \$1 25.

# THE HARTFORD REPUBLICAN.

The Republican kindly invites its many readers and friends to give those merchants who advertise in its columns the benefit of their trade. It will be regarded as a personal favor.

Fine Job Work a Specialty.

OFFICIAL ORGAN OF THE PARTY IN THE FOURTH CONGRESSIONAL DISTRICT.

Subscription \$1 a year.

VOL. XII.

HARTFORD, KY., FRIDAY, JANUARY 5, 1900.

No. 24.

**PROFESSIONAL.**

**JOHN P. MORTON**  
ATTORNEY AT LAW,  
HARTFORD, KY.  
Special attention given to all business entrusted to his care. Office in Court House.

**M. L. HEAVRIN,**  
Attorney at Law  
HARTFORD, KY.  
Will practice his profession in all the courts of Ohio and adjoining counties and Court of Appeals. Special attention given to collections.

**SHELBY TAYLOR,**  
ATTORNEY AT LAW  
HARTFORD, KY.  
Will practice his profession in all the courts of Ohio and adjoining counties and Court of Appeals. Special attention given to all assignments in bankruptcy.

**C. M. BARNETT,**  
ATTORNEY AT LAW,  
HARTFORD, KY.  
Will practice his profession in all the courts of Ohio and adjoining counties. Careful attention will be given to a business entrusted to his care. Collections a specialty.

**JNO. B. WILSON,**  
Attorney at Law  
HARTFORD, KY.  
SPECIAL attention given to &c. also Notary Public for Ohio County. Office North side of public square.

**R. R. WEDDING**  
Attorney at Law,  
HARTFORD, KY.  
Will practice his profession in the courts of Ohio and adjoining counties. Also Notary Public.

**H. P. NEAL,**  
Attorney at Law,  
HARTFORD, KY.  
Will practice his profession in all the courts of Kentucky. Special attention given to collections, settlements and decedent's estates, road cases and criminal practice. Office on stairs next door to Griffin's drug store.

**J. S. R. Wedding,**  
ATTORNEY AND COUNSELLOR AT LAW,  
HARTFORD, KY.  
Will practice his profession in all the courts of Ohio and adjoining counties and the Court of Appeals. Prompt attention given to all business entrusted to his care. Office in REPUBLICAN building.

**JOHN T. RONE,**  
ATTORNEY AT LAW  
HARTFORD, KY.  
Will practice his profession in all the courts of Ohio and adjoining counties and Court of Appeals. Special attention given to collections. Office in W. A. Rose building.

**A. C. TAYLOR,**  
Attorney at Law,  
HARTFORD, KY.  
Special attention given to all business entrusted to his care. Office in Court House.

**R. E. LEESIMMERMAN,**  
Attorney at Law  
HARTFORD, KY.  
Will practice his profession in all the courts of Ohio and adjoining counties. Collections carefully and promptly attended to. Office with T. J. Smith & Co., Market Street.

**J. E. DAVIDSON,**  
Attorney at Law,  
HARTFORD, KY.  
Will practice his profession in Ohio and adjoining counties. Special attention given to all business entrusted to his care.

**S. P. Roby,**  
ATTORNEY AT LAW,  
FORDSVILLE, KENTUCKY.  
Will practice his profession in all the courts of Ohio and adjoining counties and Court of Appeals. Special attention given to collections. Office next door to Post Office.

J. EDWIN ROWE, F L FELIX  
**Rowe & Felix,**  
Lawyers  
HARTFORD, KY.  
Will practice in the Courts of Ohio county and Court of Appeals. Prompt attention given to all business entrusted to our care. Office in Herald building

**The Southern Railway.**  
Through Eight Best Southern States  
Kentucky, Virginia, South Carolina, Alabama, Tennessee,  
North Carolina, Georgia, and Mississippi.  
64 1/2 Miles Three Daily Trains Between Louisville and Lexington Observation Chair Cars. Trains leave and arrive Louisville from Seventh Street Union Depot, connecting with trains of the Illinois Central Railroad and L. H. & St. L. Railway.  
For Information, Address  
A. Whelan, P. O. Box 216, 4th Ave., Louisville, Ky.  
W. B. Taylor, Assistant G. P. A., Louisville, Ky.  
J. H. CULLP, W. A. TYLER,  
Travel Agents,  
WASHINGTON, D. C.

**Syrup of Ipecac**



ACTS GENTLY ON THE  
**KIDNEYS, LIVER  
AND BOWELS**  
CLEANSES THE SYSTEM  
DISPELS EFFECTUALLY  
**COLDS HEADACHES**  
OVERCOMES  
**FEVERS**  
HABITUAL CONSTIPATION  
PERMANENTLY  
ITS BENEFICIAL EFFECTS.  
BUY THE GENUINE MARKED BY  
**CALIFORNIA FIG SYRUP CO.**  
NEW YORK

**OSTEOPATHY.**

An Interesting Article on the Wonderful Progress of Medical Science.

Which is Astounding the World--The Science of Drugless Healing is Founded

Upon Anatomy--Some Interesting Facts About the Work.

The Franklin Institute.

Osteopathy the Coming Science.

The most beautiful, if not the greatest discovery of the age, the one of the widest significance, which will be most welcomed by the whole human family, because of its intimate relationship to its needs, their success and their happiness, has been made in the science of materia medica.

AT THE RATE OF  
**4 CENTS**  
A WEEK  
For the OLDEST and BEST PAPER ON Newspaper in the South.  
**The Louisville Evening Post**  
—Contains 16, 12 or 16 pages daily—Complete Daily Market—All the Abstracts of the Opinions of the Court of Appeals—All the Washington and Frankfort News—EVERYTHING THAT A DAILY NEWSPAPER SHOULD CONTAIN is to be found in the Living Post daily.  
The Rates Are—  
\$1.00 for Three Months.  
\$3.00 for Six Months.  
\$3.00 for One Year.  
\$12.00 for 200 copies.  
Send postal card for sample copies.

irrefutable proofs which admit of neither cavil or dispute.

The science of medicine as now practiced possesses neither philosophy nor common sense, being based chiefly on conjecture improved by error.

Osteopathy is a science founded solely upon anatomy. Its treatment is entirely and distinctly its own, and its marvelous results are reached by scientific methods not known or practiced by any other school.

Osteopathy views the human form as a machine, and when an abnormal condition arises is enabled by his intimate knowledge of the human mechanism to trace the origin of any ailment to some abnormality of bone, muscle, tendon, vein, artery or nerve.

Osteopathy is that science which consists of such exact, exhaustive and veritable knowledge of the structure and functions of the human mechanism, anatomical, physiological, including the chemistry and physics of its known elements, as has made discoverable certain organic laws and remedial resources within the body itself by which nature, under the scientific treatment peculiar to Osteopathic practice, apart from all ordinary methods of extraneous, artificial or medicinal stimulation, and in harmonious accord with its own mechanical principles, molecular activities and metabolic processes, may recover from displacements, disorganizations, derangements and consequent diseases and regain its normal equilibrium of form and function in health and strength.

The following branches will be pursued during the spring term: Mathematics, Geometry, Surveying, Astronomy, Trigonometry, Mechanics and Calculus; Latin; Beginning Latin, Caesar; English Literature; Panchast's text, some of the recent writers, Philosophy of Literature and Draper's Intellectual Development of Europe, and General History; Sciences, Botany, Physics, Psychology and Chemistry.

**Teachers' Courses.**

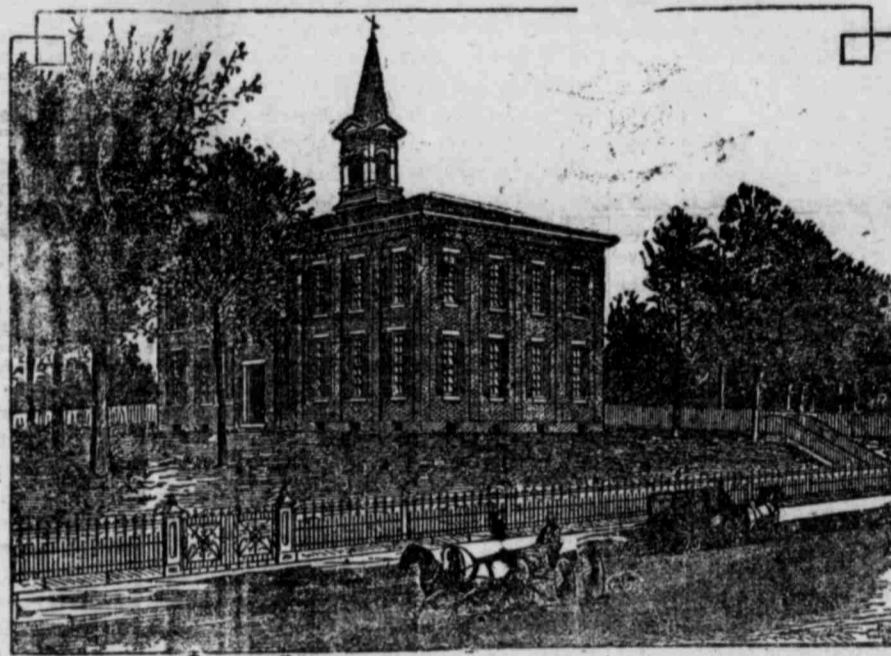
These courses are under the instruction of the ablest teachers in the school and the work done in them covers every branch required by the State for a County certificate, a State certificate or a State diploma.

Having a Great Run on Chamberlain's Cough Remedy.

Manager Martin, of the Pierson drug store, informs us that he is having a great run on Chamberlain's Cough Remedy.

These being prosperous times, the marriage market also is enjoying a most remarkable boom.

**HARTFORD COLLEGE, HARTFORD, KENTUCKY.**  
EASILY THE LEADING SCHOOL OF THIS SECTION OF KENTUCKY. --- SPRING TERM BEGINS JAN. 22, 1900, AND CONTINUES TWENTY WEEKS.



**NOTE THE ADVANTAGES**  
Healthful Location, Strong Faculty, Well-Equipped Building, The Best Methods, Superior Environments, Complete Courses, Low Expenses.

Departments---COLLEGIATE, TEACHERS', PREPARATORY, COMMERCIAL, ELOCUTION, MUSIC AND LAW.

**Collegiate Department.**  
By reference to the year book of 1899 and 1900 it will be observed that the courses of study are more complete and the field of research broader than they have been at any time in the history of our institution.

**Teachers' Courses.**  
These courses are under the instruction of the ablest teachers in the school and the work done in them covers every branch required by the State for a County certificate, a State certificate or a State diploma.

**Scholarships.**  
Washington & Lee University has placed in our hands a scholarship to be given to one of our graduates, who desires to pursue a higher course of work than we offer.

**Does it Pay?**

Does colonization pay? This is a question which Americans are now asking.

**The Ills of Children.**

Do you need work in the Teachers' course? If so, we want you. Are you deficient in Spelling, Reading, Writing, Composition, Grammar, Arithmetic, Geography, History, Civics, Physiology, Educational Psychology, Methods, Physics, Geometry, Literature or Latin?

**Teachers' Courses.**  
These courses are under the instruction of the ablest teachers in the school and the work done in them covers every branch required by the State for a County certificate, a State certificate or a State diploma.

**Special Departments.**  
These are Music, Law, Commercial and Elocution, each of which is in charge of thoroughly competent and experienced teachers.

**Standing of Hartford College.**  
For a number of years Hartford College has been gaining a rank with the leading Colleges and Universities that she is proud to possess.

**Teachers' Courses.**  
These courses are under the instruction of the ablest teachers in the school and the work done in them covers every branch required by the State for a County certificate, a State certificate or a State diploma.

**Scholarships.**  
Washington & Lee University has placed in our hands a scholarship to be given to one of our graduates, who desires to pursue a higher course of work than we offer.

**Does it Pay?**

Does colonization pay? This is a question which Americans are now asking.

**The Ills of Children.**

Do you need work in the Teachers' course? If so, we want you. Are you deficient in Spelling, Reading, Writing, Composition, Grammar, Arithmetic, Geography, History, Civics, Physiology, Educational Psychology, Methods, Physics, Geometry, Literature or Latin?

**Teachers' Courses.**  
These courses are under the instruction of the ablest teachers in the school and the work done in them covers every branch required by the State for a County certificate, a State certificate or a State diploma.

**Scholarships.**  
Washington & Lee University has placed in our hands a scholarship to be given to one of our graduates, who desires to pursue a higher course of work than we offer.

**Does it Pay?**

**KEEP AT IT.**  
If you expect to conquer In the battle of to day You will have to blow your trumpet In a firm and steady way.

**COOKING A HUSBAND.**  
A Few Simple Rules for Making Them Tender and Digestible.

In selecting your husband you should not be guided by the silvery appearance as in buying mackerel, or by the golden tint, as if you wanted salmon.

**Teachers' Courses.**  
These courses are under the instruction of the ablest teachers in the school and the work done in them covers every branch required by the State for a County certificate, a State certificate or a State diploma.

**Scholarships.**  
Washington & Lee University has placed in our hands a scholarship to be given to one of our graduates, who desires to pursue a higher course of work than we offer.

**Does it Pay?**

Does colonization pay? This is a question which Americans are now asking.

**The Ills of Children.**

Do you need work in the Teachers' course? If so, we want you. Are you deficient in Spelling, Reading, Writing, Composition, Grammar, Arithmetic, Geography, History, Civics, Physiology, Educational Psychology, Methods, Physics, Geometry, Literature or Latin?

**Teachers' Courses.**  
These courses are under the instruction of the ablest teachers in the school and the work done in them covers every branch required by the State for a County certificate, a State certificate or a State diploma.

**Scholarships.**  
Washington & Lee University has placed in our hands a scholarship to be given to one of our graduates, who desires to pursue a higher course of work than we offer.

**Does it Pay?**

**ALL WOMEN AGREE.**

A druggist in Macon, Ga., says: "I have used a large quantity of **Mother's Friend**, and have never known an instance where it has failed to produce the good results claimed for it. All women agree that it makes labor shorter and less painful."



**Mother's Friend**  
is not a chance remedy. Its good effects are readily experienced by all expectant mothers who use it.

Indeed, the purpose of various countries in this regard differ so widely that the term "colonization" is frequently misleading.

**Teachers' Courses.**  
These courses are under the instruction of the ablest teachers in the school and the work done in them covers every branch required by the State for a County certificate, a State certificate or a State diploma.

**Scholarships.**  
Washington & Lee University has placed in our hands a scholarship to be given to one of our graduates, who desires to pursue a higher course of work than we offer.

**Does it Pay?**

Does colonization pay? This is a question which Americans are now asking.

**The Ills of Children.**

Do you need work in the Teachers' course? If so, we want you. Are you deficient in Spelling, Reading, Writing, Composition, Grammar, Arithmetic, Geography, History, Civics, Physiology, Educational Psychology, Methods, Physics, Geometry, Literature or Latin?

**Teachers' Courses.**  
These courses are under the instruction of the ablest teachers in the school and the work done in them covers every branch required by the State for a County certificate, a State certificate or a State diploma.

**Scholarships.**  
Washington & Lee University has placed in our hands a scholarship to be given to one of our graduates, who desires to pursue a higher course of work than we offer.

**Does it Pay?**