

Table 1 Child Care and Development Fund Average Monthly Adjusted Number of Families and Children Served (FFY 2003)		
States/Territories	Average Number of Families	Average Number of Children
Alabama	17,600	30,400
Alaska	3,000	5,300
American Samoa	400	700
Arizona	17,100	29,100
Arkansas	7,500	12,900
California	102,800	153,600
Colorado	12,500	22,800
Connecticut	6,800	11,700
Delaware	4,100	6,800
District of Columbia	6,200	8,500
Florida	72,400	121,200
Georgia	34,700	61,900
Guam	200	200
Hawaii	7,000	11,200
Idaho	4,400	7,800
Illinois	44,000	85,700
Indiana	18,500	34,300
Iowa	8,200	14,100
Kansas	8,600	16,000
Kentucky	22,900	39,900
Louisiana	32,000	54,600
Maine	3,100	4,500
Maryland	18,200	30,000
Massachusetts	23,200	32,200
Michigan	31,200	61,200
Minnesota	14,300	25,700
Mississippi	13,200	23,300
Missouri	22,000	37,900
Montana	3,100	5,200
Nebraska	6,800	12,000
Nevada	3,600	6,100
New Hampshire	5,000	7,300
New Jersey	26,900	37,500
New Mexico	12,500	22,100
New York	83,200	142,700
North Carolina	52,300	88,300
North Dakota	3,000	4,700
Northern Marianas	200	400
Ohio	29,800	52,100
Oklahoma	12,900	21,300
Oregon	11,900	22,100
Pennsylvania	33,200	60,700
Puerto Rico	-	-
Rhode Island	3,700	5,800
South Carolina	14,100	23,000
South Dakota	2,700	4,300
Tennessee	27,000	52,100
Texas	62,900	117,300
Utah	4,700	8,900
Vermont	2,400	3,700
Virgin Islands	-	-
Virginia	15,500	25,800
Washington	31,700	52,900
West Virginia	5,400	9,200
Wisconsin	10,400	18,200
Wyoming	2,500	4,100
Total	1,023,500	1,751,300

Notes applicable to this table:

1. The source for this table is ACF-801 data for FFY 2003.
2. The "adjusted" numbers were obtained by multiplying the respective "unadjusted" numbers by the reported pooling factor percentage that was applicable to the ACF-801 data.
3. The reported results shown above have been rounded to the nearest 100. The national numbers are simply the sum of the State and Territory numbers.
4. All states provide an actual count of families served. However, the number of children served is not a direct count based on the fact that some States elect to submit sample data versus full population data. For States that submit samples, the ratio of children-to-families is determined and then multiplied by the number of families served to obtain an estimate of the number of children served.
5. Puerto Rico and the Virgin Islands were unable to report ACF-801 case-level data before report preparation.
6. On an ongoing basis, CA serves a significant number of families and children through State funds. Beginning in FY 2002, CA recognized and corrected their reporting to show that only 86% of families and children are being served through CCDF (as opposed to 100%). The other 14% are actually being served by non-CCDF funds. Prior to FY 2002, NY reported children based on a payments system which allowed for a child to be counted more than once. Beginning with FY 2002, NY revised their reporting system. This has had the effect of eliminating double-counting. These changes lowered the national child counts by nearly 100,000 for FY 2002 and FY 2003 as compared to what was reported for FY 2001.

Table 2
Child Care and Development Fund
Percent of Children Served by Payment Method (FFY 2003)

State	Grants / Contracts %	Certificates %	Cash %	Total
Alabama	0%	100%	0%	51,894
Alaska	0%	100%	0%	10,662
American Samoa	100%	0%	0%	1,450
Arizona	0%	100%	0%	51,470
Arkansas	0%	100%	0%	26,670
California	40%	60%	0%	292,359
Colorado	1%	96%	3%	47,244
Connecticut	31%	69%	0%	26,847
Delaware	0%	100%	0%	11,389
District of Columbia	46%	54%	0%	8,849
Florida	52%	48%	0%	208,578
Georgia	10%	90%	0%	124,153
Guam	0%	100%	0%	1,072
Hawaii	0%	90%	10%	20,099
Idaho	0%	100%	0%	15,465
Illinois	8%	92%	0%	151,220
Indiana	5%	95%	0%	71,592
Iowa	0%	100%	0%	28,994
Kansas	0%	92%	8%	32,872
Kentucky	0%	100%	0%	72,093
Louisiana	0%	100%	0%	119,447
Maine	22%	77%	1%	10,436
Maryland	0%	100%	0%	46,164
Massachusetts	48%	52%	0%	65,584
Michigan	0%	72%	28%	93,668
Minnesota	0%	100%	0%	59,216
Mississippi	19%	81%	0%	37,579
Missouri	0%	100%	0%	69,913
Montana	0%	99%	1%	10,350
Nebraska	0%	100%	0%	24,497
Nevada	17%	83%	0%	14,250
New Hampshire	0%	100%	0%	12,487
New Jersey	21%	79%	0%	76,692
New Mexico	0%	100%	0%	37,193
New York	27%	73%	0%	177,207
North Carolina	0%	100%	0%	123,926
North Dakota	0%	100%	0%	10,112
Northern Mariana Islands	0%	100%	0%	769
Ohio	0%	100%	0%	92,145
Oklahoma	-	-	-	-
Oregon	5%	95%	0%	59,868
Pennsylvania	0%	80%	20%	112,000
Puerto Rico	56%	44%	0%	25,917
Rhode Island	0%	100%	0%	8,722
South Carolina	10%	90%	0%	42,730
South Dakota	1%	99%	0%	8,803
Tennessee	0%	100%	0%	75,587
Texas	0%	100%	0%	243,750
Utah	0%	0%	100%	16,681
Vermont	7%	93%	0%	7,630
Virgin Islands	5%	95%	0%	1,442
Virginia	0%	100%	0%	53,463
Washington	0%	75%	25%	92,365
West Virginia	0%	100%	0%	16,424
Wisconsin	0%	100%	0%	30,415
Wyoming	0%	100%	0%	7,616
National Total	13%	84%	3%	3,140,019

Notes applicable to this table:

1. The source for this table is ACF-800 data for FFY 2003.
2. A "0%" indication often means the value is less than 0.5% rather than actually zero.
3. In a few instances, the sum of the categories may not appear to add up to exactly 100% because of rounding.
4. New York reports monthly averages rather than the disaggregated annual totals reported by all other states.
5. Oklahoma has not yet submitted an ACF-800 for FFY 2003.

Table 3
Child Care and Development Fund
Percent of Children Served by Types of Care (FFY 2003)

State	Child's Home	Family Home	Group Home	Center	Total
Alabama	0%	11%	5%	84%	51,894
Alaska	12%	37%	5%	46%	10,662
American Samoa	0%	0%	0%	100%	1,450
Arizona	3%	19%	6%	72%	51,470
Arkansas	0%	25%	0%	75%	26,670
California	5%	33%	9%	53%	292,359
Colorado	7%	33%	0%	60%	47,244
Connecticut	19%	30%	0%	51%	26,847
Delaware	4%	38%	2%	56%	11,389
District of Columbia	0%	4%	0%	96%	8,849
Florida	0%	12%	0%	88%	208,578
Georgia	2%	13%	2%	83%	124,153
Guam	12%	10%	1%	77%	1,072
Hawaii	6%	68%	0%	26%	20,099
Idaho	2%	36%	16%	46%	15,465
Illinois	24%	39%	1%	36%	151,220
Indiana	1%	46%	0%	53%	71,592
Iowa	1%	50%	12%	37%	28,994
Kansas	8%	18%	41%	33%	32,872
Kentucky	2%	24%	2%	72%	72,093
Louisiana	15%	11%	0%	74%	119,447
Maine	6%	46%	0%	48%	10,436
Maryland	14%	44%	0%	42%	46,164
Massachusetts	4%	7%	16%	72%	65,584
Michigan	31%	44%	9%	16%	93,668
Minnesota	14%	51%	0%	35%	59,216
Mississippi	5%	11%	1%	83%	37,579
Missouri	4%	46%	2%	48%	69,913
Montana	2%	27%	34%	38%	10,350
Nebraska	1%	41%	12%	45%	24,497
Nevada	5%	10%	1%	85%	14,250
New Hampshire	-	-	-	-	12,487
New Jersey	3%	26%	0%	71%	76,692
New Mexico	0%	47%	5%	48%	37,193
New York	14%	41%	8%	37%	177,207
North Carolina	0%	15%	0%	85%	123,926
North Dakota	0%	45%	28%	27%	10,112
Northern Mariana Islands	0%	78%	0%	22%	769
Ohio	0%	38%	1%	61%	92,145
Oklahoma	-	-	-	-	-
Oregon	0%	78%	4%	18%	59,868
Pennsylvania	13%	46%	4%	37%	112,000
Puerto Rico	0%	32%	0%	68%	25,917
Rhode Island	2%	31%	0%	67%	8,722
South Carolina	5%	17%	4%	74%	42,730
South Dakota	1%	49%	9%	41%	8,803
Tennessee	4%	15%	5%	76%	75,587
Texas	8%	12%	3%	77%	243,750
Utah	14%	41%	6%	38%	16,681
Vermont	6%	49%	0%	46%	7,630
Virgin Islands	4%	3%	8%	86%	1,442
Virginia	1%	37%	0%	62%	53,463
Washington	19%	35%	0%	46%	92,365
West Virginia	0%	46%	3%	51%	16,424
Wisconsin	0%	36%	0%	64%	30,415
Wyoming	34%	26%	20%	19%	7,616
National Total	7%	29%	4%	59%	3,140,019

Notes applicable to this table:

1. The source for this table is ACF-800 data for FFY 2003.
2. New Hampshire did not submit data for setting type.
3. A "0%" indication often means the value is less than 0.5% rather than actually zero.
4. In a few instances, the sum of the categories may not appear to add up to exactly 100% because of rounding.
5. New York Reports Monthly Averages rather than the disaggregated Annual total reported by all other states.
6. Oklahoma has not yet submitted an ACF-800 for FFY 2003.

Table 4
Child Care and Development Fund
Percent of Children Served in Regulated Settings vs. Settings Legally Operating Without Regulation (FFY 2003)

State	Licensed/Regulated	Legally Operating Without Regulation	Total
Alabama	80%	20%	51,894
Alaska	67%	33%	10,662
American Samoa	100%	0%	1,450
Arizona	87%	13%	51,470
Arkansas	100%	0%	26,670
California	69%	31%	292,359
Colorado	78%	22%	47,244
Connecticut	57%	43%	26,847
Delaware	79%	21%	11,389
District of Columbia	61%	39%	8,849
Florida	90%	10%	208,578
Georgia	94%	6%	124,153
Guam	59%	41%	1,072
Hawaii	26%	74%	20,099
Idaho	62%	38%	15,465
Illinois	49%	51%	151,220
Indiana	62%	38%	71,592
Iowa	89%	11%	28,994
Kansas	81%	19%	32,872
Kentucky	81%	19%	72,093
Louisiana	74%	26%	119,447
Maine	82%	18%	10,436
Maryland	76%	24%	46,164
Massachusetts	94%	6%	65,584
Michigan	33%	67%	93,668
Minnesota	60%	40%	59,216
Mississippi	84%	16%	37,579
Missouri	60%	40%	69,913
Montana	88%	12%	10,350
Nebraska	79%	21%	24,497
Nevada	71%	29%	14,250
New Hampshire	-	-	12,487
New Jersey	83%	17%	76,692
New Mexico	54%	46%	37,193
New York	59%	41%	177,207
North Carolina	98%	2%	123,926
North Dakota	90%	10%	10,112
Northern Mariana Islands	100%	0%	769
Ohio	100%	0%	92,145
Oklahoma	-	-	-
Oregon	40%	60%	59,868
Pennsylvania	51%	49%	112,000
Puerto Rico	68%	32%	25,917
Rhode Island	93%	7%	8,722
South Carolina	82%	18%	42,730
South Dakota	88%	12%	8,803
Tennessee	88%	12%	75,587
Texas	82%	18%	243,750
Utah	58%	42%	16,681
Vermont	78%	22%	7,630
Virgin Islands	94%	6%	1,442
Virginia	86%	14%	53,463
Washington	75%	25%	92,365
West Virginia	92%	8%	16,424
Wisconsin	100%	0%	30,415
Wyoming	54%	46%	7,616
National Total	74%	26%	3,140,019

Notes applicable to this table:

1. The source for this table is ACF-800 data for FFY 2003.
2. New Hampshire did not submit data for setting type.
3. A "0%" indication often means the value is less than 0.5% rather than actually zero.
4. In a few instances, the sum of the categories may not appear to add up to exactly 100% because of rounding.
5. New York Reports Monthly Averages rather than the disaggregated Annual total reported by all other states.
6. Oklahoma has not yet submitted an ACF-800 for FFY 2003.

**Table 5
Child Care and Development Fund
Of Children in Settings Legally Operating Without Regulation, Percent Served by
Relatives vs. Non-Relatives (FFY 2003)**

State	Relative	Non-Relative	Total
Alabama	25%	75%	10,417
Alaska	42%	58%	3,478
American Samoa	-	-	0
Arizona	100%	0%	6,497
Arkansas	-	-	0
California	59%	41%	90,966
Colorado	48%	52%	10,568
Connecticut	59%	41%	11,490
Delaware	47%	53%	2,408
District of Columbia	2%	98%	3,452
Florida	5%	95%	21,183
Georgia	56%	44%	7,762
Guam	52%	48%	443
Hawaii	78%	22%	14,860
Idaho	42%	58%	5,881
Illinois	56%	44%	76,626
Indiana	18%	82%	27,216
Iowa	29%	71%	3,259
Kansas	79%	21%	6,092
Kentucky	62%	38%	13,924
Louisiana	46%	54%	31,513
Maine	48%	52%	1,858
Maryland	82%	18%	10,918
Massachusetts	70%	30%	4,208
Michigan	76%	24%	62,845
Minnesota	37%	63%	23,674
Mississippi	62%	38%	6,000
Missouri	33%	67%	27,879
Montana	54%	46%	1,290
Nebraska	0%	100%	5,057
Nevada	19%	81%	4,202
New Hampshire	-	-	-
New Jersey	27%	73%	13,269
New Mexico	72%	28%	17,105
New York	45%	55%	72,770
North Carolina	78%	22%	2,352
North Dakota	100%	0%	1,000
Northern Mariana Islands	-	-	0
Ohio	-	-	0
Oklahoma	-	-	-
Oregon	24%	76%	35,646
Pennsylvania	17%	83%	54,769
Puerto Rico	72%	28%	8,396
Rhode Island	80%	20%	633
South Carolina	1%	99%	7,500
South Dakota	70%	30%	1,014
Tennessee	43%	57%	9,370
Texas	100%	0%	43,169
Utah	93%	7%	7,072
Vermont	5%	95%	1,710
Virgin Islands	57%	43%	92
Virginia	61%	39%	7,259
Washington	68%	32%	23,039
West Virginia	73%	27%	1,235
Wisconsin	-	-	0
Wyoming	93%	7%	3,524
National Average	51%	49%	806,890

Notes applicable to this table:

1. The source for this table is ACF-800 data for FFY 2003.
2. New Hampshire did not report the number of children by setting type.
3. A "0%" indication often means the value is less than 0.5% rather than actually zero.
4. In a few instances, the sum of the categories may not appear to add up to exactly 100% because of rounding.
5. In some States there were no children served in Unregulated settings.
6. New York reports monthly averages rather than the disaggregated annual totals reported by all other states.
7. Oklahoma has not yet submitted an ACF-800 for FFY 2003.

Table 6
Child Care and Development Fund
Percent of Children Served in All Types of Care (FFY 2003)

State	Total % of Children	Licensed or Regulated Providers				Providers Legally Operating without Regulation						
		Child's Home	Family Home	Group Home	Center	Child's Home		Family Home		Group Home		Center
						Relative	Non-Relative	Relative	Non-Relative	Relative	Non-Relative	
Alabama	100%	0%	6%	5%	69%	0%	0%	5%	0%	0%	0%	15%
Alaska	100%	0%	17%	5%	46%	5%	7%	9%	12%	0%	0%	0%
American Samoa	100%	0%	0%	0%	100%	0%	0%	0%	0%	0%	0%	0%
Arizona	100%	1%	9%	6%	72%	3%	0%	10%	0%	0%	0%	0%
Arkansas	100%	0%	25%	0%	75%	0%	0%	0%	0%	0%	0%	0%
California	100%	0%	11%	9%	48%	4%	1%	15%	7%	0%	0%	5%
Colorado	100%	0%	18%	0%	60%	1%	6%	9%	6%	0%	0%	0%
Connecticut	100%	0%	7%	0%	50%	14%	5%	11%	12%	0%	0%	0%
Delaware	100%	0%	31%	2%	45%	4%	0%	6%	0%	0%	0%	11%
District of Columbia	100%	0%	3%	0%	58%	0%	0%	1%	0%	0%	0%	38%
Florida	100%	0%	10%	0%	80%	0%	0%	0%	1%	0%	0%	8%
Georgia	100%	0%	9%	2%	83%	1%	1%	3%	2%	0%	0%	0%
Guam	100%	0%	0%	1%	58%	11%	0%	10%	0%	0%	0%	20%
Hawaii	100%	0%	6%	0%	20%	6%	0%	51%	11%	0%	0%	5%
Idaho	100%	0%	0%	16%	46%	1%	1%	15%	21%	0%	0%	0%
Illinois	100%	0%	16%	1%	33%	10%	14%	18%	5%	0%	0%	3%
Indiana	100%	0%	31%	0%	31%	0%	1%	6%	9%	0%	0%	22%
Iowa	100%	0%	40%	12%	37%	0%	1%	3%	7%	0%	0%	0%
Kansas	100%	0%	7%	41%	33%	4%	4%	10%	0%	0%	0%	0%
Kentucky	100%	0%	7%	2%	72%	1%	1%	11%	6%	0%	0%	0%
Louisiana	100%	0%	0%	0%	74%	9%	6%	3%	8%	0%	0%	0%
Maine	100%	0%	35%	0%	48%	3%	4%	6%	6%	0%	0%	0%
Maryland	100%	0%	35%	0%	41%	10%	3%	9%	0%	0%	0%	1%
Massachusetts	100%	0%	5%	16%	72%	2%	2%	2%	0%	0%	0%	0%
Michigan	100%	0%	9%	9%	16%	15%	16%	36%	0%	0%	0%	0%
Minnesota	100%	0%	28%	0%	32%	7%	7%	8%	15%	0%	0%	3%
Mississippi	100%	0%	0%	1%	83%	4%	1%	6%	5%	0%	0%	0%
Missouri	100%	0%	16%	2%	42%	3%	1%	10%	20%	0%	0%	6%
Montana	100%	0%	16%	34%	38%	1%	1%	6%	5%	0%	0%	0%
Nebraska	100%	0%	22%	12%	45%	0%	1%	0%	19%	0%	0%	0%
Nevada	100%	0%	3%	1%	67%	4%	1%	2%	5%	0%	0%	18%
New Hampshire	-	-	-	-	-	-	-	-	-	-	-	-
New Jersey	100%	0%	12%	0%	71%	1%	2%	4%	10%	0%	0%	0%
New Mexico	100%	0%	1%	5%	48%	0%	0%	33%	13%	0%	0%	0%
New York	100%	0%	14%	8%	36%	7%	7%	12%	15%	0%	0%	1%
North Carolina	100%	0%	13%	0%	85%	0%	0%	1%	0%	0%	0%	0%
North Dakota	100%	0%	35%	28%	27%	0%	0%	10%	0%	0%	0%	0%
Northern Mariana Islands	100%	0%	78%	0%	22%	0%	0%	0%	0%	0%	0%	0%
Ohio	100%	0%	38%	1%	61%	0%	0%	0%	0%	0%	0%	0%
Oklahoma	-	-	-	-	-	-	-	-	-	-	-	-
Oregon	100%	0%	20%	3%	17%	0%	0%	14%	44%	0%	1%	1%
Pennsylvania	100%	0%	10%	4%	37%	3%	10%	6%	30%	0%	0%	0%
Puerto Rico	100%	0%	0%	0%	68%	0%	0%	23%	9%	0%	0%	0%
Rhode Island	100%	0%	26%	0%	67%	0%	1%	5%	0%	0%	0%	0%
South Carolina	100%	0%	5%	4%	74%	0%	5%	0%	12%	0%	0%	0%
South Dakota	100%	0%	39%	9%	41%	0%	0%	8%	3%	0%	0%	0%
Tennessee	100%	0%	6%	5%	76%	3%	1%	3%	6%	0%	0%	0%
Texas	100%	0%	3%	3%	77%	8%	0%	10%	0%	0%	0%	0%
Utah	100%	6%	8%	6%	38%	8%	1%	32%	2%	0%	0%	0%
Vermont	100%	0%	32%	0%	46%	0%	6%	1%	16%	0%	0%	0%
Virgin Islands	100%	0%	0%	8%	86%	3%	1%	1%	2%	0%	0%	0%
Virginia	100%	0%	24%	0%	62%	1%	0%	8%	5%	0%	0%	0%
Washington	100%	0%	29%	0%	46%	11%	8%	6%	0%	0%	0%	0%
West Virginia	100%	0%	40%	3%	50%	0%	0%	6%	1%	0%	0%	1%
Wisconsin	100%	0%	36%	0%	64%	0%	0%	0%	0%	0%	0%	0%
Wyoming	100%	0%	14%	20%	19%	31%	3%	12%	0%	0%	0%	0%
Percentage	100%	0%	14%	4%	57%	4%	3%	9%	7%	0%	0%	3%

Notes applicable to this table:

1. The source for this data is ACF-800 data from FFY 2003.
2. New Hampshire did not report number of children by setting type.
3. A "0%" indication often means the value is less than 0.5% rather than actually zero.
4. In a few instances, the sum of the categories may not appear to add up to exactly 100% because of rounding.
5. New York Reports Monthly Averages rather than the disaggregated Annual total reported by all other states.
6. Oklahoma has not yet submitted an ACF-800 for FFY 2003.

Table 7
Child Care and Development Fund and Additional State Efforts
Number of Child Care Providers Receiving CCDF Funds (FFY 2003)

State	Child's Home	Family Home	Group Home	Center	Total
Alabama	54	2,238	359	1,552	4,203
Alaska	411	2,192	80	230	2,913
American Samoa	0	0	0	34	34
Arizona	906	4,386	314	1,217	6,823
Arkansas	0	808	0	924	1,732
California	10,498	62,028	10,236	15,712	98,474
Colorado	2,083	6,561	0	1,483	10,127
Connecticut	6,534	6,895	29	1,497	14,955
Delaware	462	1,669	40	377	2,548
District of Columbia	19	215	0	361	595
Florida	347	7,088	0	9,813	17,248
Georgia	1,208	5,696	293	5,131	12,328
Guam	47	37	2	57	143
Hawaii	767	8,696	5	258	9,726
Idaho	159	2,789	473	483	3,904
Illinois	41,635	46,362	286	2,980	91,263
Indiana	261	6,771	0	1,472	8,504
Iowa	180	6,999	902	677	8,758
Kansas	1,079	2,083	2,388	737	6,287
Kentucky	548	5,778	116	1,698	8,140
Louisiana	6,081	2,740	0	2,071	10,892
Maine	133	1,896	0	477	2,506
Maryland	3,573	7,349	0	1,648	12,570
Massachusetts	2,493	1,979	1,652	1,632	7,756
Michigan	33,759	43,398	2,578	2,447	82,182
Minnesota	5,057	14,541	0	1,563	21,161
Mississippi	1,102	2,238	69	1,383	4,792
Missouri	1,222	11,105	179	1,858	14,364
Montana	139	1,397	496	266	2,298
Nebraska	418	3,606	430	530	4,984
Nevada	329	606	14	560	1,509
New Hampshire	-	-	-	-	3,540
New Jersey	1,562	9,565	0	2,474	13,601
New Mexico	9	8,565	181	474	9,229
New York	9,741	29,880	2,480	4,374	46,475
North Carolina	172	5,371	0	4,308	9,851
North Dakota	0	2,131	875	98	3,104
Northern Mariana Islands	0	167	0	14	181
Ohio	28	17,337	106	3,644	21,115
Oklahoma	-	-	-	-	-
Oregon	37	15,514	130	958	16,639
Pennsylvania	5,128	19,168	528	3,276	28,100
Puerto Rico	67	7,400	0	8,202	15,669
Rhode Island	195	1,364	6	276	1,841
South Carolina	1,216	3,128	207	1,503	6,054
South Dakota	55	1,338	80	205	1,678
Tennessee	733	2,552	422	1,790	5,497
Texas	11,356	15,533	1,054	6,393	34,336
Utah	2,174	6,168	398	492	9,232
Vermont	408	2,161	0	370	2,939
Virgin Islands	30	30	53	79	192
Virginia	-	-	-	-	-
Washington	16,217	11,563	0	1,985	29,765
West Virginia	14	4,417	73	420	4,924
Wisconsin	83	6,773	0	2,092	8,948
Wyoming	186	863	156	124	1,329
National Total	170,915	441,134	27,690	104,679	747,958

Notes applicable to this table:

1. The source for this table is ACF-800 data for FFY 2003.
2. New Hampshire and Virginia did not report the number of providers by setting type.
3. Virginia did not report the number of providers.
4. New York Reports Monthly Averages rather than the disaggregated Annual total reported by all other states.
5. Oklahoma has not yet submitted an ACF-800 for FFY 2003.

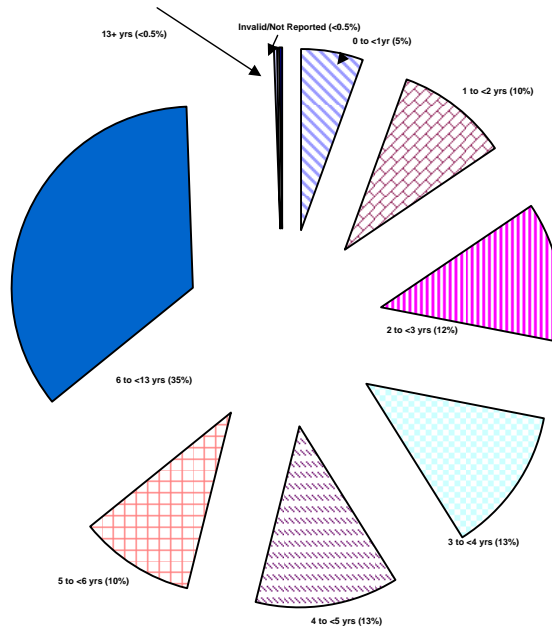
Table 8
Child Care and Development Fund
Consumer Education Strategies Summary (FFY 2003)

State	Grants / Contracts / Certificates Info	Resource and Referral	Provider List	Types/Quality of Care Materials	Health and Safety	Child Care Regulatory Info	Child Care Complaint Policy	Mass Media	Other	Estimated Number of Families Receiving Consumer Education
Alabama	Y	Y	Y	Y	Y	Y	Y	Y	Y	46,700
Alaska	NA	Y	Y	Y	Y	Y	Y	Y	N	10,950
American Samoa	N	Y	Y	Y	Y	Y	Y	Y	Y	5,000
Arizona	NA	Y	Y	Y	Y	Y	Y	Y		176,212
Arkansas	Y	Y	Y	Y	Y	Y	Y	Y	N	15,958
California	Y	Y	Y	Y	Y	Y	Y	Y	N	1,931,787
Colorado	Y	Y	Y	Y	Y	Y	Y	Y	N	85,206
Connecticut	Y	Y	Y	Y	Y	Y	Y	N	Y	64,977
Delaware	Y	Y	Y	Y	Y	Y	Y	Y	Y	30,659
District of Columbia	Y	Y	Y	Y	Y	Y	Y	Y	N	34,000
Florida	Y	Y	Y	Y	Y	Y	Y	Y	Y	341,323
Georgia	Y	Y	Y	Y	Y	Y	Y	Y		69,954
Guam	Y	Y	Y	Y	Y	Y	Y	Y	N	547
Hawaii	NA	N	Y	Y	Y	Y	Y	N		11,773
Idaho	NA	Y	Y	Y	Y	N	N	N		10,911
Illinois	Y	Y	Y	Y	Y	Y	Y	Y	N	232,500
Indiana	Y	Y	Y	Y	Y	Y	Y	Y	N	38,973
Iowa	N	Y	Y	Y	Y	Y	Y	Y	N	27,685
Kansas	NA	Y	Y	Y	Y	Y	Y	Y		119,345
Kentucky	NA	Y	Y	Y	Y	Y	Y	N	N	75,250
Louisiana	NA	Y	Y	Y	Y	Y	Y	Y	N	46,477
Maine	Y	Y	Y	Y	Y	Y	Y	Y	N	8,765
Maryland	NA	Y	Y	Y	Y	Y	Y	Y	Y	244,670
Massachusetts	Y	Y	Y	Y	Y	Y	Y	Y	Y	64,075
Michigan	NA	Y	Y	Y	Y	Y	Y	Y	N	1,094,471
Minnesota	Y	Y	Y	Y	Y	Y	Y	Y	N	1,859,277
Mississippi	N	Y	Y	Y	Y	Y	Y	Y	N	3,668
Missouri	Y	Y	Y	Y	Y	Y	Y	Y		41,224
Montana	Y	Y	Y	Y	Y	Y	Y	Y		879,798
Nebraska	N	N	Y	Y	Y	Y	Y	Y	Y	449,172
Nevada	Y	Y	Y	Y	Y	Y	Y	Y		8,472
New Hampshire	Y	Y	Y	Y	Y	N	N	N	N	8,431
New Jersey	Y	Y	N	Y	Y	Y	Y	Y	N	172,102
New Mexico	NA	Y	Y	Y	Y	Y	Y	Y	Y	21,092
New York	Y	Y	N	Y	Y	Y	Y	Y	N	490,337
North Carolina	Y	Y	Y	Y	N	Y	Y	Y	N	283,587
North Dakota	NA	Y	Y	Y	Y	Y	Y	Y	N	11,163
Northern Mariana Islands	NA	Y	Y	Y	Y	Y	Y	Y		345
Ohio	Y	Y	Y	Y	Y	Y	Y	Y	N	129,213
Oklahoma	-	-	-	-	-	-	-	-	-	-
Oregon	Y	Y	Y	Y	Y	Y	Y	Y	N	45,945
Pennsylvania	NA	Y	Y	Y	Y	Y	Y	Y	N	164,551
Puerto Rico	Y	Y	Y	Y	Y	Y	Y	N	N	25,048
Rhode Island	NA	Y	Y	Y	Y	N	N	N	N	9,000
South Carolina	Y	Y	Y	Y	Y	N	Y	N	N	28,185
South Dakota	Y	Y	Y	Y	Y	Y	Y	Y	N	110,953
Tennessee	NA	Y	Y	Y	Y	N	Y	N	N	39,838
Texas	Y	Y	Y	Y	Y	Y	Y	Y	N	118,375
Utah	NA	Y	Y	Y	Y	Y	Y	Y	N	7,804
Vermont	NA	Y	Y	Y	Y	Y	Y	Y	N	7,868
Virgin Islands	NA	Y	Y	Y	Y	Y	Y	Y		721
Virginia	Y	Y	Y	Y	Y	N	Y	Y		40,000
Washington	NA	Y	Y	Y	Y	Y	Y	Y	N	26,703
West Virginia	Y	Y	Y	Y	Y	Y	Y	Y	Y	7,627
Wisconsin	NA	Y	N	Y	Y	Y	Y	Y	N	48,221
Wyoming	NA	Y	Y	Y	Y	N	Y	Y	N	30,239
Total Yes	30	53	52	55	54	48	52	46	10	9,857,127

Notes applicable to this table:

1. Source for this table is the ACF-800 data for FFY 2003.
2. NA=Not applicable, does not offer grants or contracts for subsidized child care slots.
3. A blank cell indicates that the State did not provide a response.
4. New York Reports Monthly Averages rather than the disaggregated Annual total reported by all other states.
5. Oklahoma has not yet submitted an ACF-800 for FFY 2003.

CCDF
Percentage of Children Served By Age Group (FFY 2003)

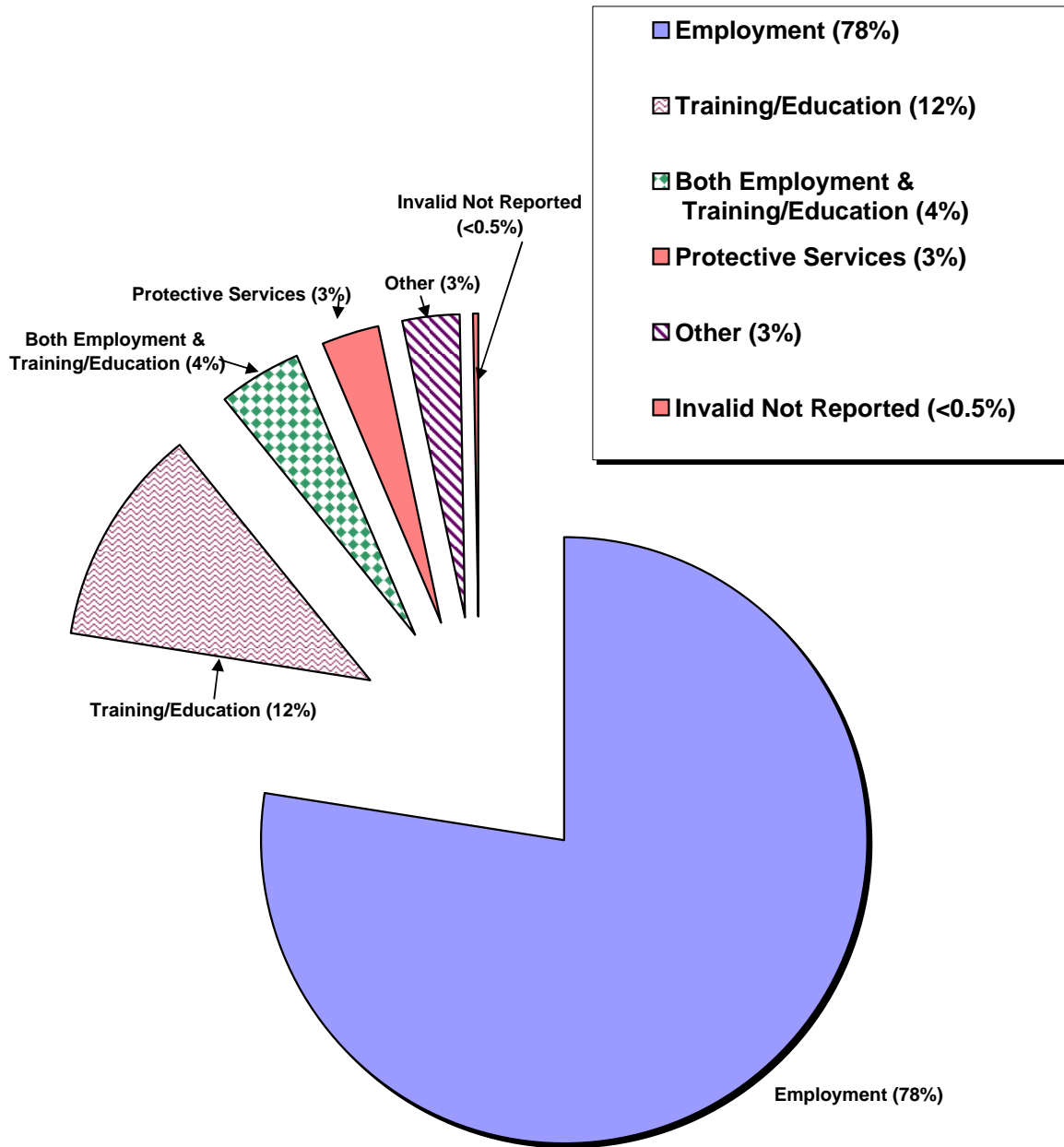


0 to <1yr (5%)	1 to <2 yrs (10%)
2 to <3 yrs (12%)	3 to <4 yrs (13%)
4 to <5 yrs (13%)	5 to <6 yrs (10%)
6 to <13 yrs (35%)	13+ yrs (<0.5%)
Invalid/Not Reported (<0.5%)	

Notes applicable to this chart:

1. The source for this table is ACF-801 data for FFY 2003.
2. National percentages are based on the "adjusted" national numbers unless otherwise indicated. In other words, the national percentages are equivalent to a weighted average of the State percentages, where the weights are the "adjusted" number of families or children served as appropriate.
3. Puerto Rico and the Virgin Islands were unable to report ACF-801 case-level data before report preparation.
4. Alaska's population reported does not accurately reflect the population served due to sampling difficulties the State is trying to resolve.
5. In some instances, the Total may appear to be slightly more or less than 100% because of rounding.

**CCDF FFY 2003
Percentage of Children Served
By Reason for Care**



Notes applicable to this chart:

1. The source for this table is ACF-801 data for FFY 2003.
2. National percentages are based on the "adjusted" national numbers unless otherwise indicated. In other words, the national percentages are equivalent to a weighted average of the State percentages, where the weights are the "adjusted" number of families or children served as appropriate.
3. The Invalid/Not Reported only includes family records with an invalid or missing number for ACF-801 element 6.
4. Several States only capture the primary reason for receiving services and therefore do not report any families in the Both Employment and Training/Education category.
5. Inconsistencies in income reporting appear in several States between ACF-801 element 6 (reason for receiving a subsidy, element 9 (total income for determining eligibility), and elements 10 through 15 (the sources of income). Records containing such inconsistencies are included in the measures above.
6. Puerto Rico and the Virgin Islands were unable to report ACF-801 case-level data before report preparation.
7. Alaska's population reported does not accurately reflect the population served due to sampling difficulties the State is trying to resolve.
8. In some instances, the Total may appear to be slightly more or less than 100% because of rounding.