

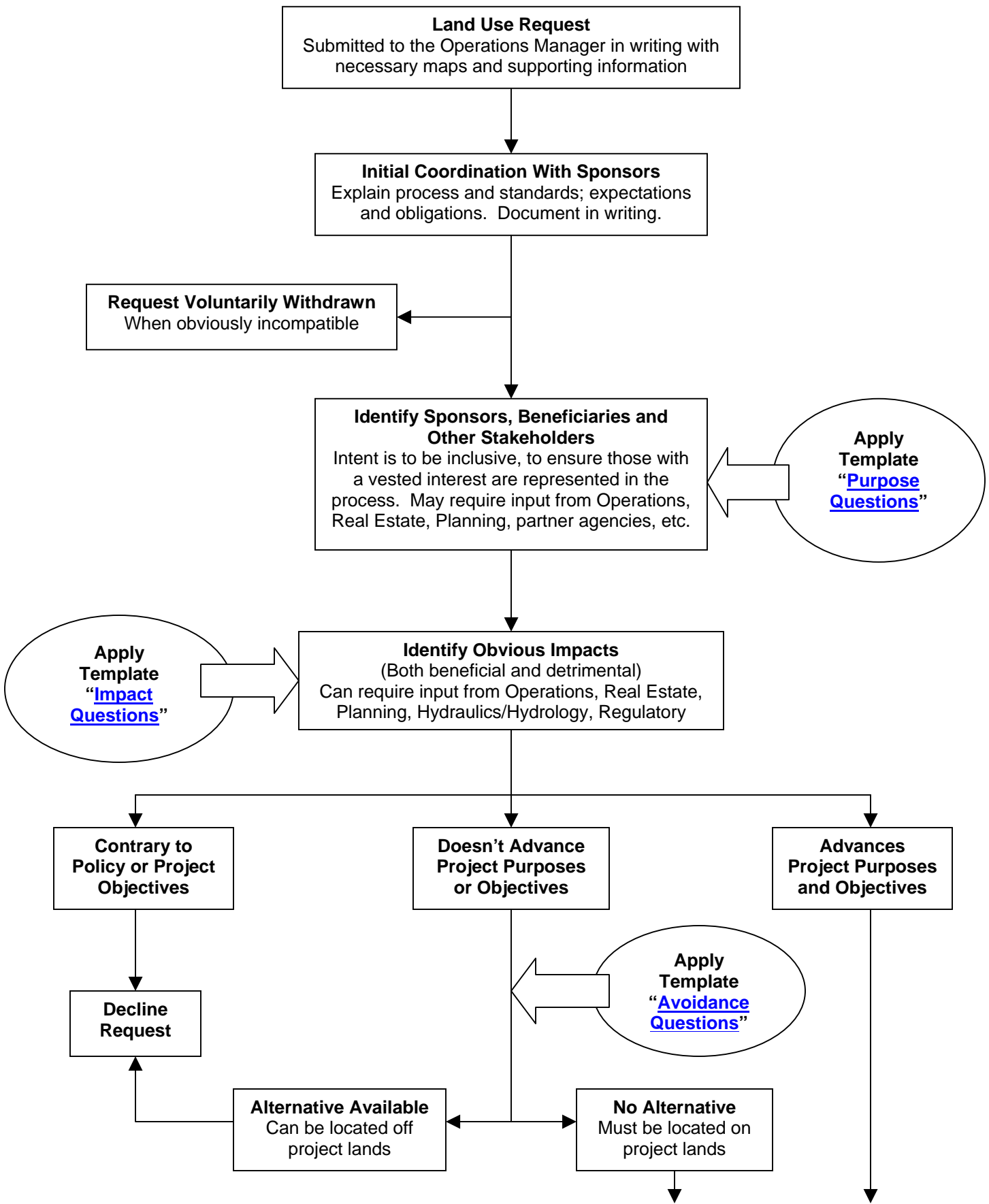
**South Atlantic Division
Land Use Review Evaluation Process
For Fee and Easement Lands**

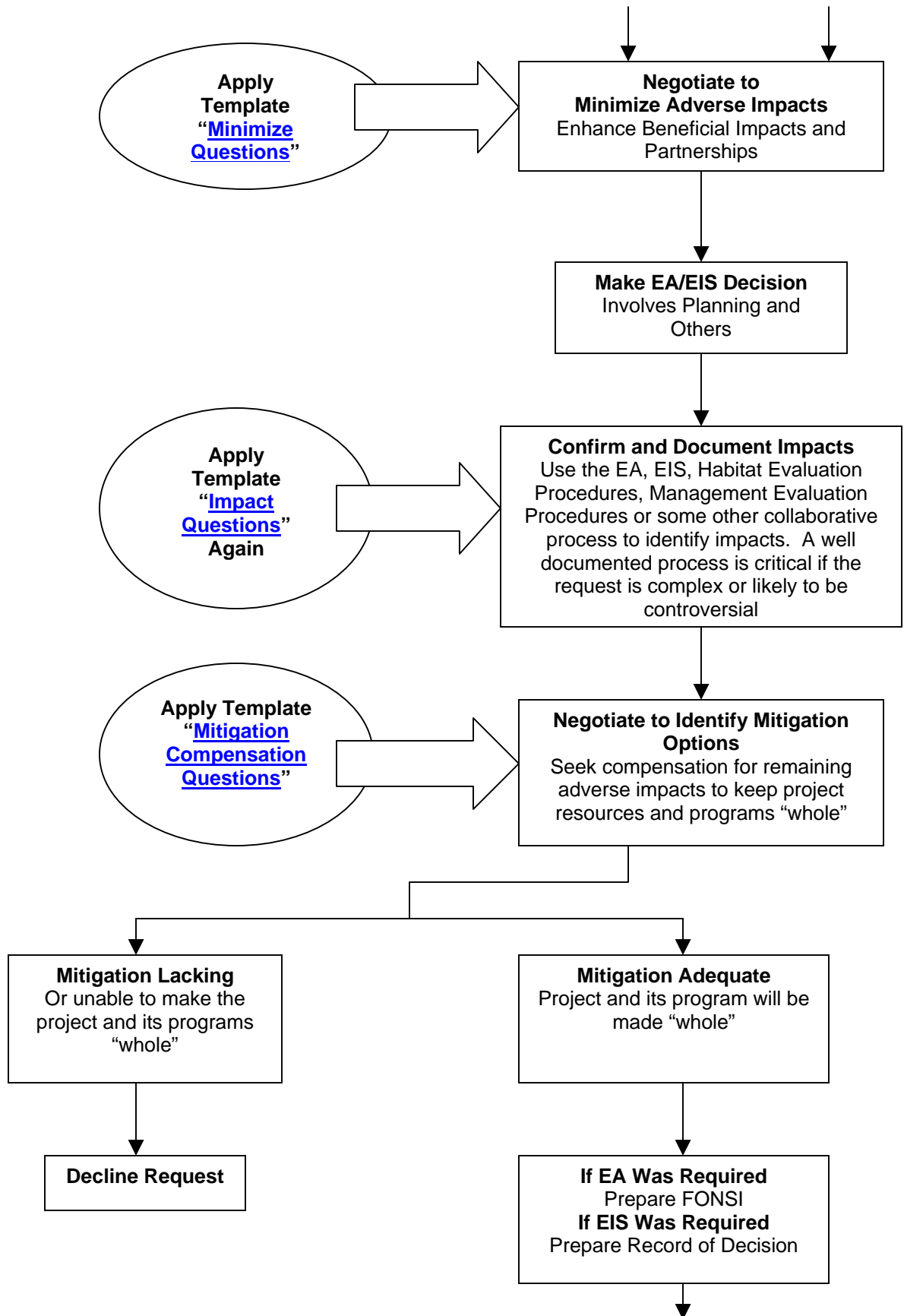
Decision Flow Chart

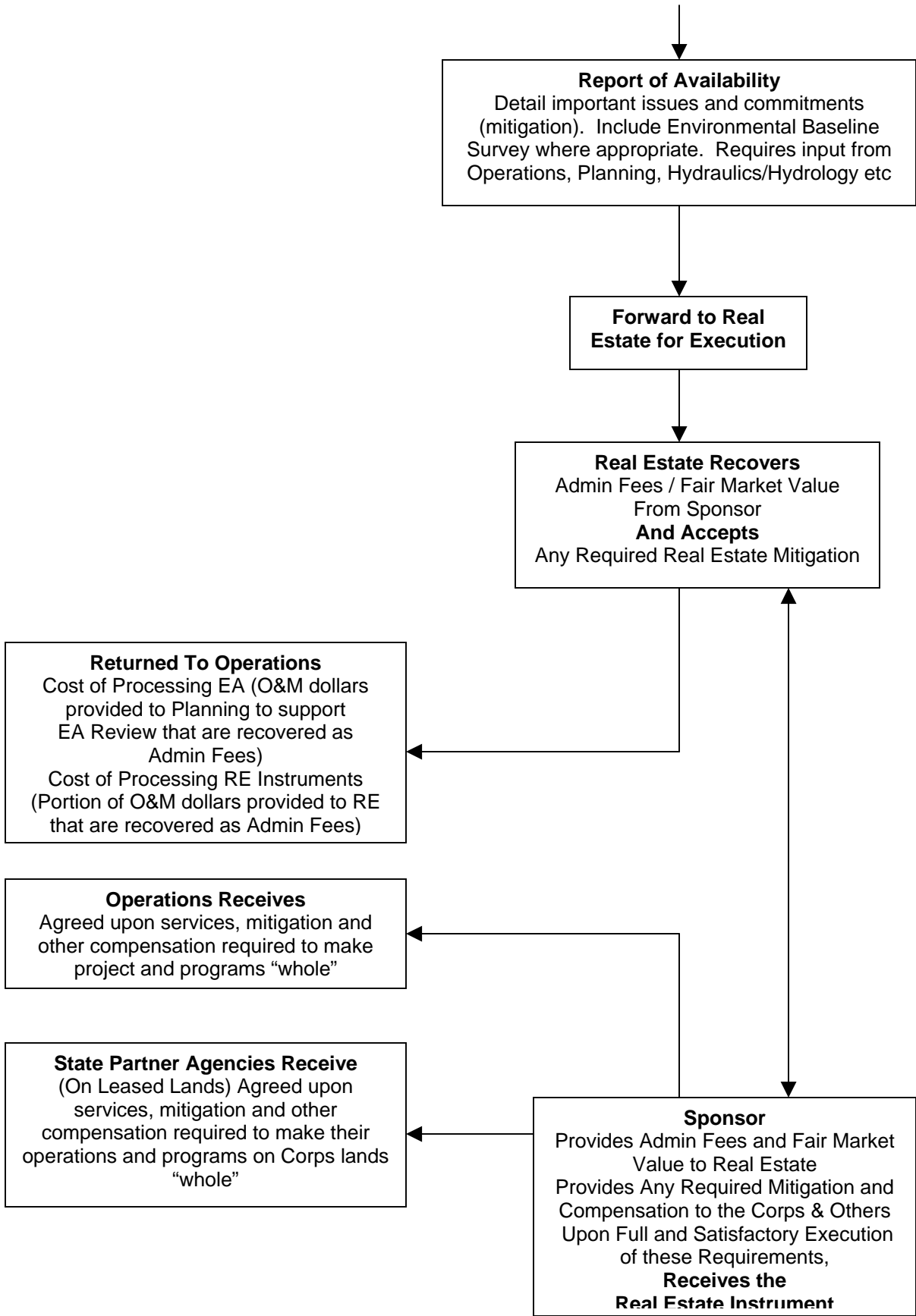
The following flow chart outlines a process used to identify and evaluate the relative merits of land use requests. Such requests ask to use public lands for any number of private and public activities. Some uses are likely detrimental to the operation of our projects, some have subtle long term implications, and still others may have significant benefits. Before we can accommodate requests, we are obligated as stewards of public lands, to carefully consider the implications.

The process is centered around a long term commitment to stewardship of each project's unique and limited resources; stewardship that is focused on making sure that we can fully execute our Congressional mandates today and in years to come. Preserving our flood storage capacity, maintaining a steadily improving natural resource base, and providing sustainable, high quality, diverse, natural resource based outdoor recreation to our visitors are among our important considerations.

To be successful each evaluation must be thorough, fair, consistent, transparent, inclusive and well documented.







Land Use Review Template

Making public lands available for new or expanded private and public uses requires fair, careful and consistent consideration. The following categories and questions are intended to prompt such review. The template can be applied at different points in the evaluation process, provides consistent criteria and helps ensure a thorough review. The answers establish the relative merits of a proposed land use, and help provide a record of our decision process.

PURPOSE

Consistent with District, NRM and Real Estate policies?

Consistent with the project's authorized Purposes?

Who are sponsors and beneficiaries?

Consistent with the easement estates?

IMPACTS

Identify and quantify (environmental, flood storage, recreational, etc.)

What are the public and private benefits and detriments?

What problems does the land-use solve or create?

Will the Corps, the project or the public we serve benefit from the proposed land use?

What's the scope and severity of impacts?

Are there likely to be cumulative impacts from similar land-use requests?

What are the implications for other projects or the District? Is this action establishing a precedent or varying from established protocols?

Is there likely to be significant political interest in the outcome?

AVOIDANCE

What can be done to accomplish the purpose and avoid the impacts?

Are there alternatives that avoid using public lands?

Are there alternatives that avoid one or more of the identified impacts?

MINIMIZATION

What can be done to minimize the impacts?

Can the land-use proposal be modified to reduce the scope or severity of adverse impacts?

Can special conditions, considerations or requirements be incorporated into the proposal to reduce the impacts?

MITIGATION/COMPENSATION

What can be done to make the project whole?

For our project, our programs and our partners?

Actions, programs, access, lands, money or other?

Do the considerations specifically address and resolve unavoidable adverse impacts?

Are those considerations consistent with Corps policies and regulations?