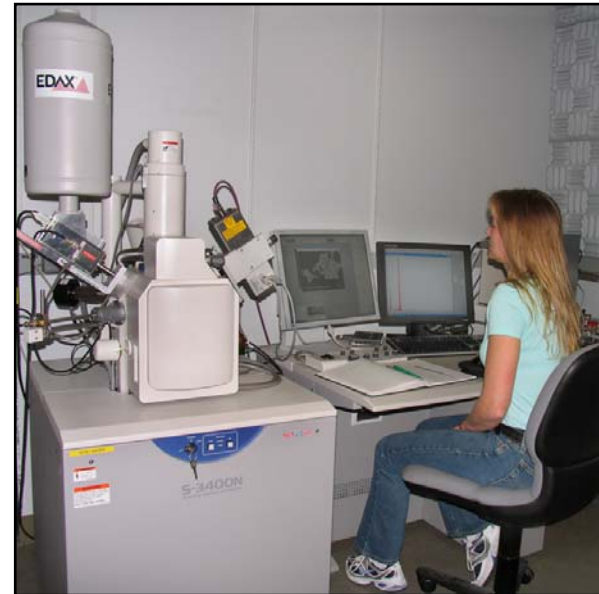


Hitachi S3400 Variable Pressure SEM

Techniques/Capabilities:

- Variable pressure operation
- Secondary (SE) and Backscattered electron (BSE) imaging of specimens up to 100 mm³
- EDS for elemental identification/mapping, semi-quantitative analyses, and spectral imaging
- Particle classification and sizing



Current Research Activities:

- Characterization of reaction products and surfaces during exposure of a material in various environments
- Characterization of protective coatings on metals and ceramics
- Characterization of proton exchange membrane and solid oxide fuel cell materials
- Characterization of deposits/reactions in catalysts bricks and particulate filters

Contact: Larry Walker, walkerlr@ornl.gov, (865) 574-5339

SE and BSE Images of Nitrided Tribicor

