



Colorado

2004



Dale Tanda

Colo. Dept. of Public Health & Environment



2004

Plague: 3 Human cases (93 +specimens)

Tularemia: 3 Human cases

Relapsing Fever: 1 Human case

R M S F: 4 Human cases

Hantavirus: 4 Human cases



2004

Arbovirus Activity

- **SLE : 0 human cases**
- **WEE: 0 human cases**



2004

West Nile Virus

- + Dead birds: 55
- + Horses: 33
- + Mosquito Pools: 168



2004

West Nile Virus

Human: 291 cases

250 Fever Cases

22 Meningitis Cases

19 Encephalitis Cases



2004

Demographics

Age Range: 6 to 90 yrs.

Mean Age of cases: 47.3 yrs.

Median Age of cases: 47 yrs.

Distribution by gender:

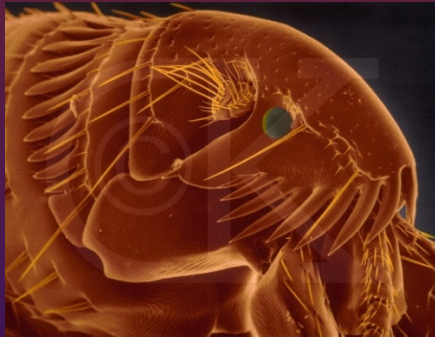
Male: 140

Female: 151



Colorado

2005





2005

Plague: 3 human cases (102 +specimens)

Tularemia: 53 +samples (5 Human cases)

Relapsing Fever: 2 cases

Rocky Mtn. Spotted Fever: 5 cases

Hantavirus: 11 cases



2005

Arbovirus Activity

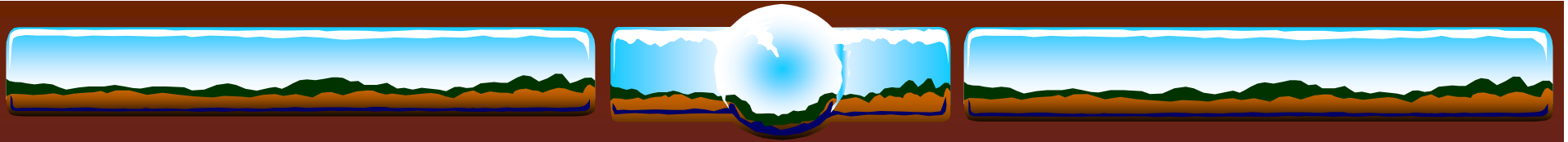
- **SLE : 0 Human cases**
- **WEE : 0 Human cases**



2005

West Nile Virus

- + Dead birds: 40
- + Horses: 13
- + Mosquitoes: 122



West Nile Virus

2005

Human cases: 105

84 Fever cases

13 Encephalitis cases

8 Meningitis cases



2005

Demographics

Age Range: 7 to 94 yrs.

Mean Age of cases: 49.6 yrs.

Median Age of cases: 48 yrs.

Distribution by gender:

Male: 49

Female: 56