

Vector-borne & Arboviral Diseases

Iowa

Susan L. Brockus, DVM, MPH
State Public Health Veterinarian

Iowa Dept. of Public Health

Sbrockus@idph.state.ia.us

515-281-4933



Advancing Health Through the Generations



Vector-borne diseases: Iowa 2001-2005

Disease	2001	2002	2003	2004	2005
Ehrlichia	0	0	1 (HGE)	0	2 (HME)
Lyme	36	42	58	49	88
Malaria	9	4	6	4	9
RMSF	2	3	2	2	7
Tularemia	1	1	0	1	0

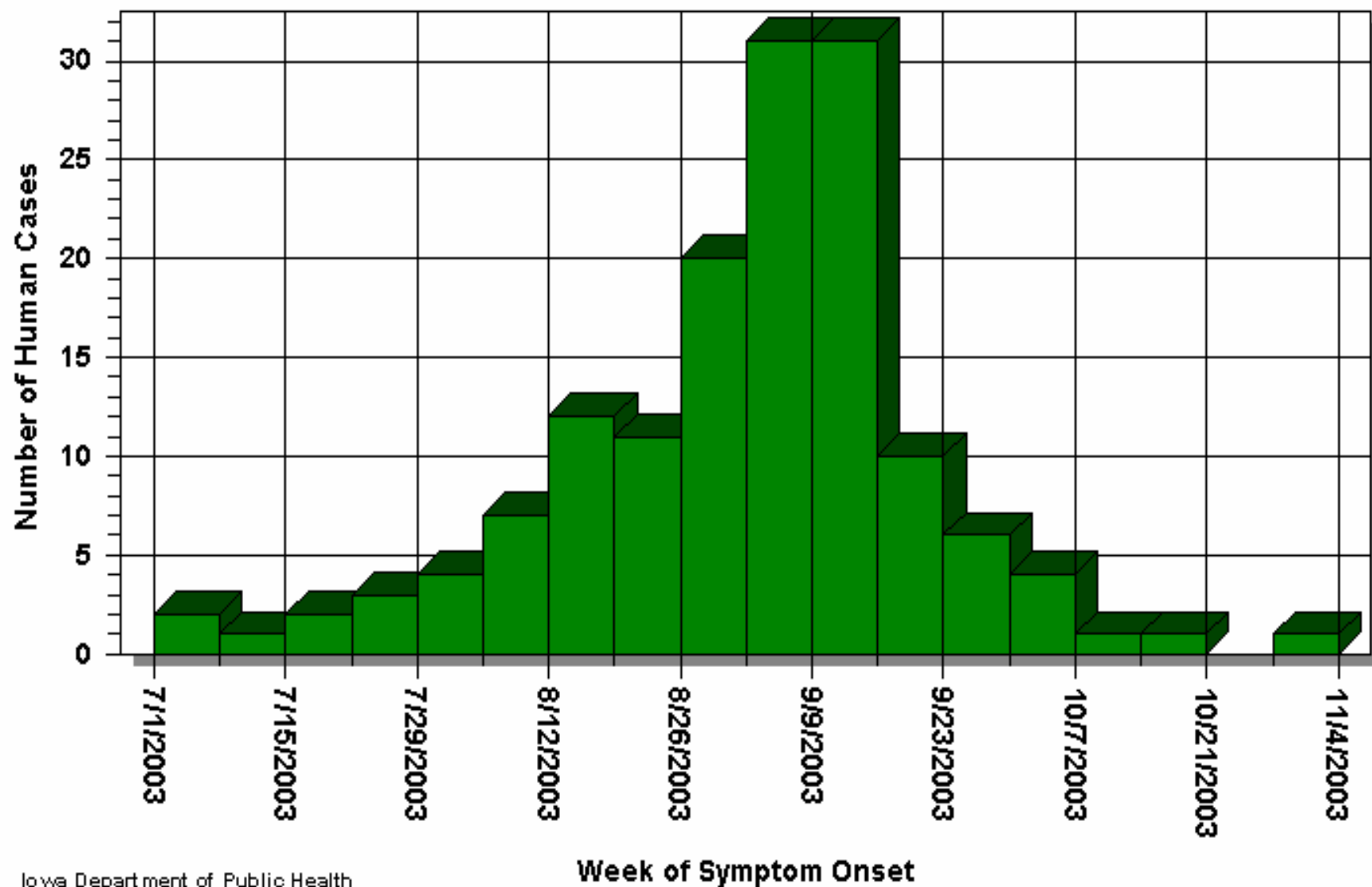
Arboviral diseases: Iowa

2001-2005

Disease	2001	2002	2003	2004	2005
LaCrosse Encephalitis	2	3	0	2	0
St. Louis Encephalitis	0	0	0	0	0
West Nile Virus	0	54 (26 WNF) (28 WNE) (incl. 2 deaths)	147 (65 WNF) (82 WNE) (incl. 6 deaths)	23 (10 WNF) (13 WNE) (incl. 2 deaths)	37 (21 WNF) (16 WNE) (incl. 2 deaths) 18 PVD's

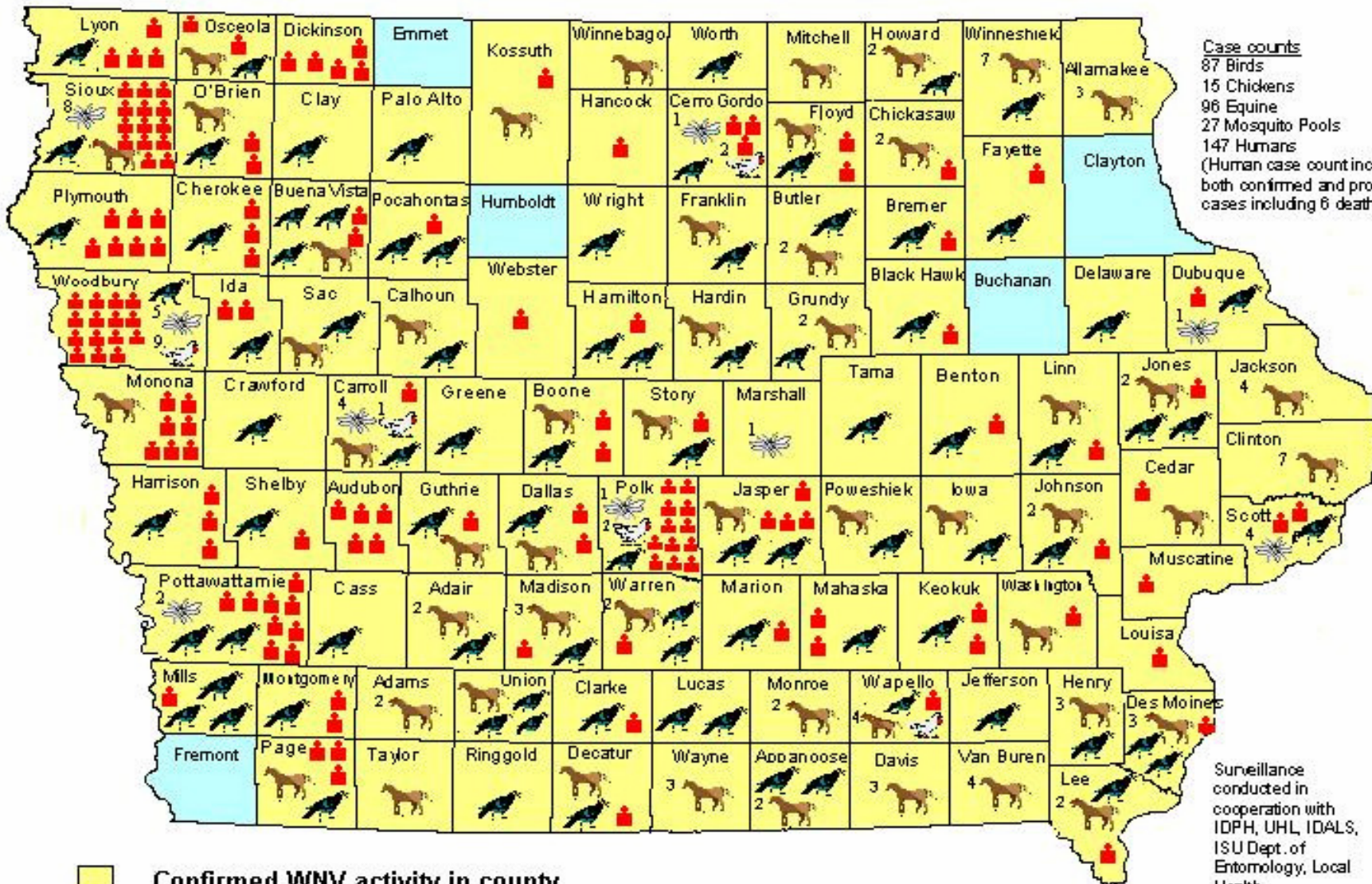
Figure 11

2003 Iowa Human West Nile Virus Cases Epidemic Curve



West Nile Virus Activity – Iowa 2003

Updated 03/02/2004
FINAL VERSION



Surveillance conducted in cooperation with IDPH, UHL, IDALS, ISU Dept. of Entomology, Local Health Departments

Confirmed WNV activity in county
 # of Positive Sentinel Chickens
 # of Positive Equine
 Positive Birds
 Positive Human
 # of Positive Mosquito Pools

Figure 3

2004 West Nile Virus Epidemic Curve (including dead birds)

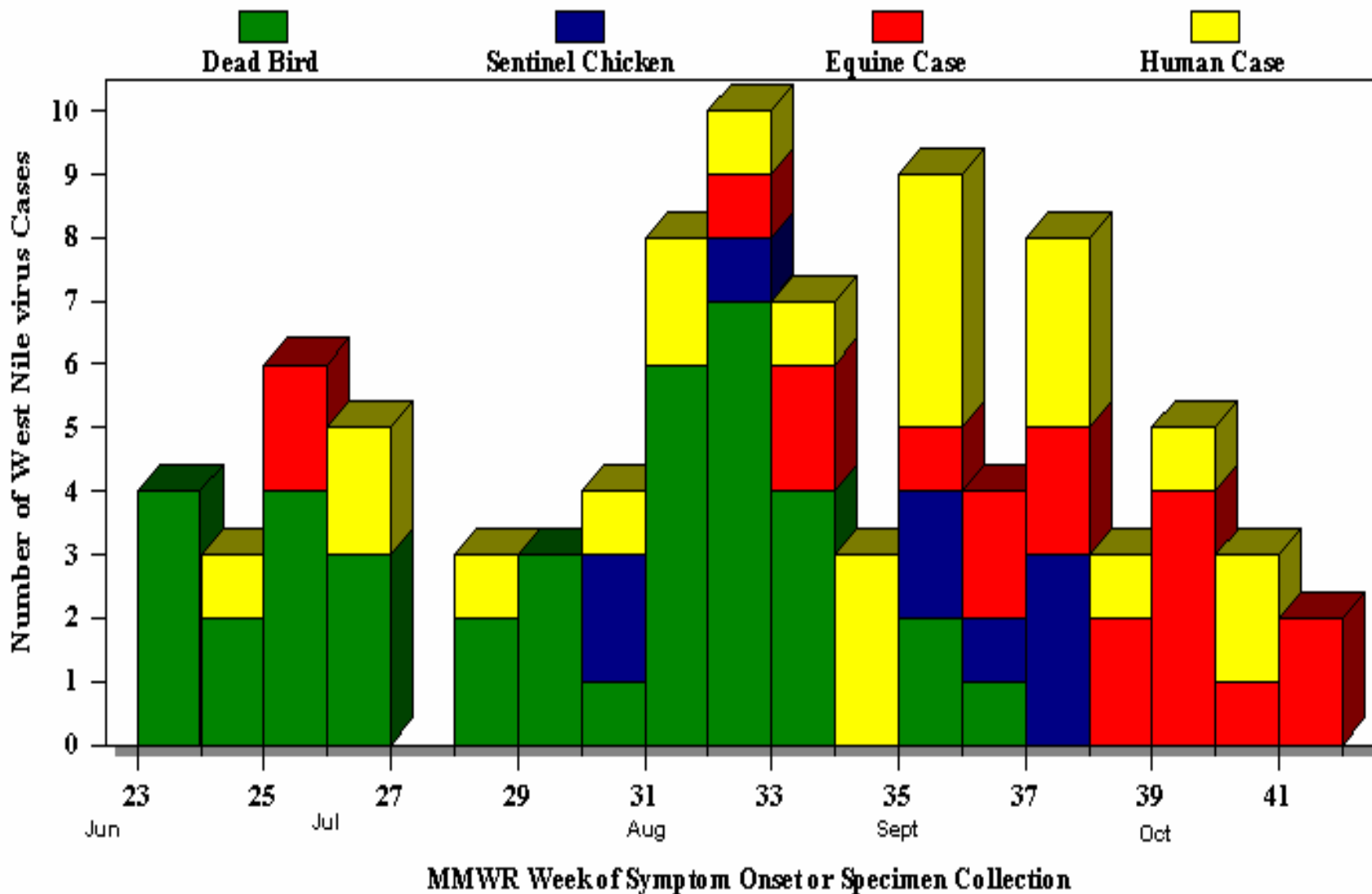
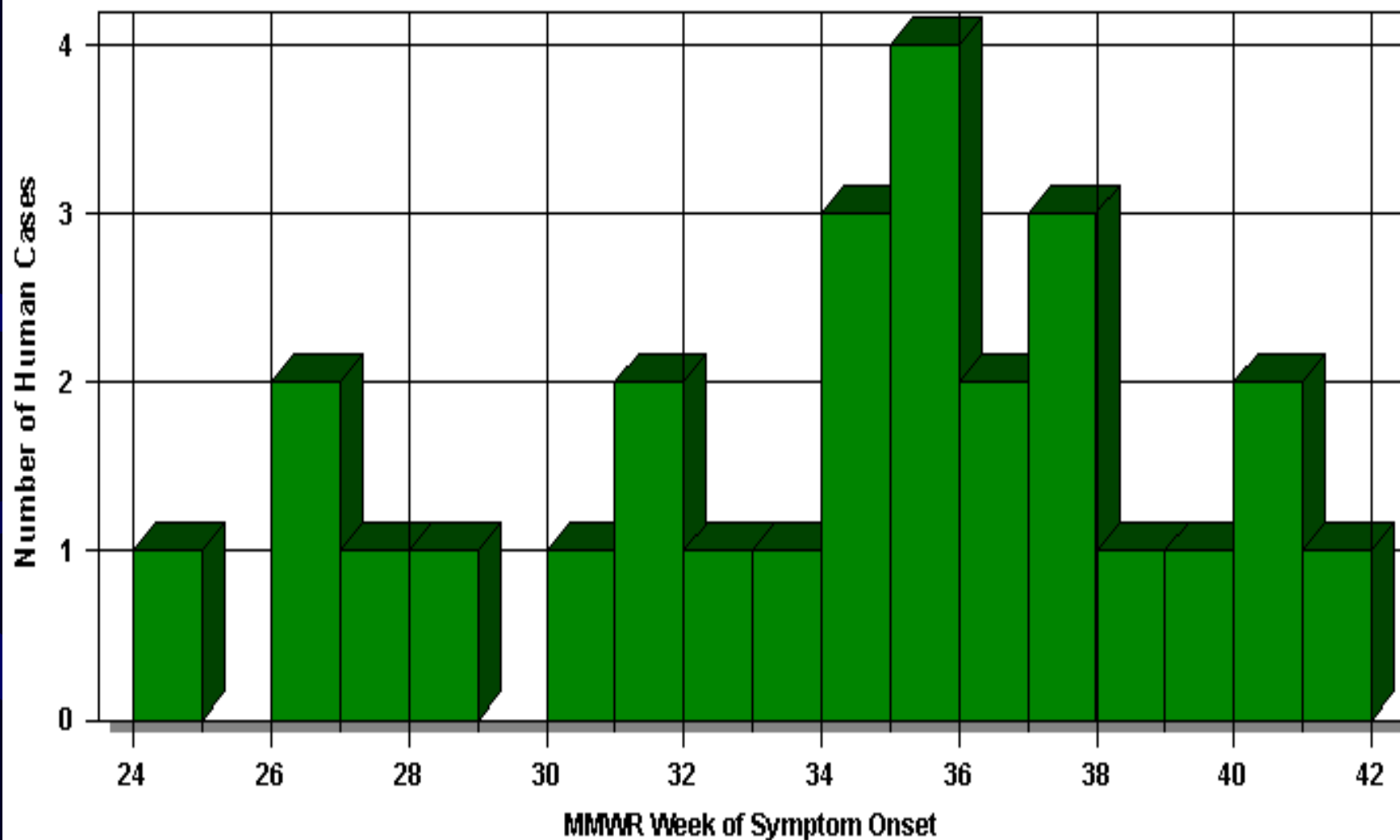


Figure 7

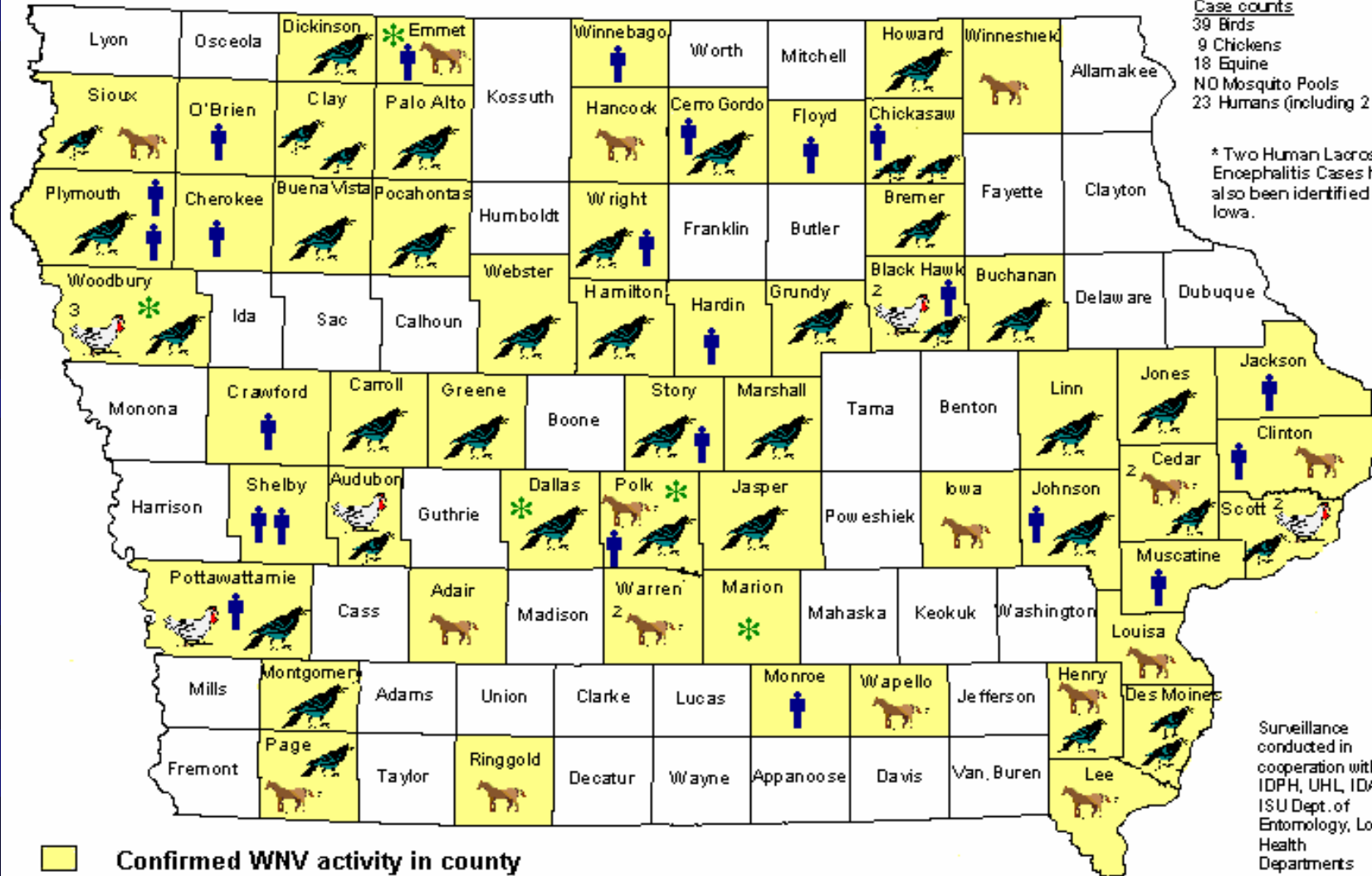
2004 Iowa Human West Nile Virus Cases

Epidemic Curve



Final Version

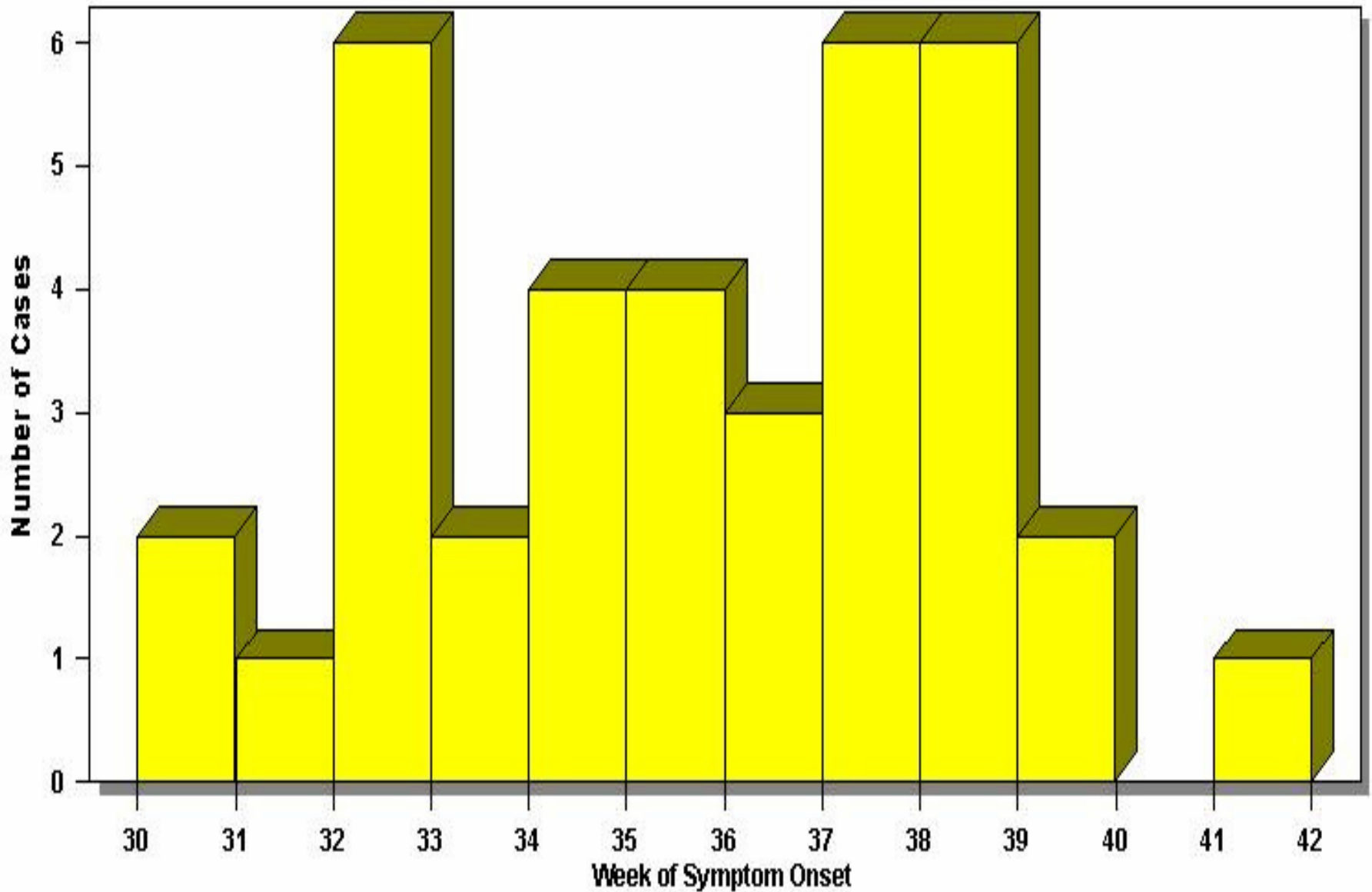
West Nile Virus Activity – Iowa 2004



- Confirmed WNV activity in county
- Positive Bird
- # of Positive Equine
- # of Positive Sentinel Chickens
- Other Positive WNV Activity
- Positive Human

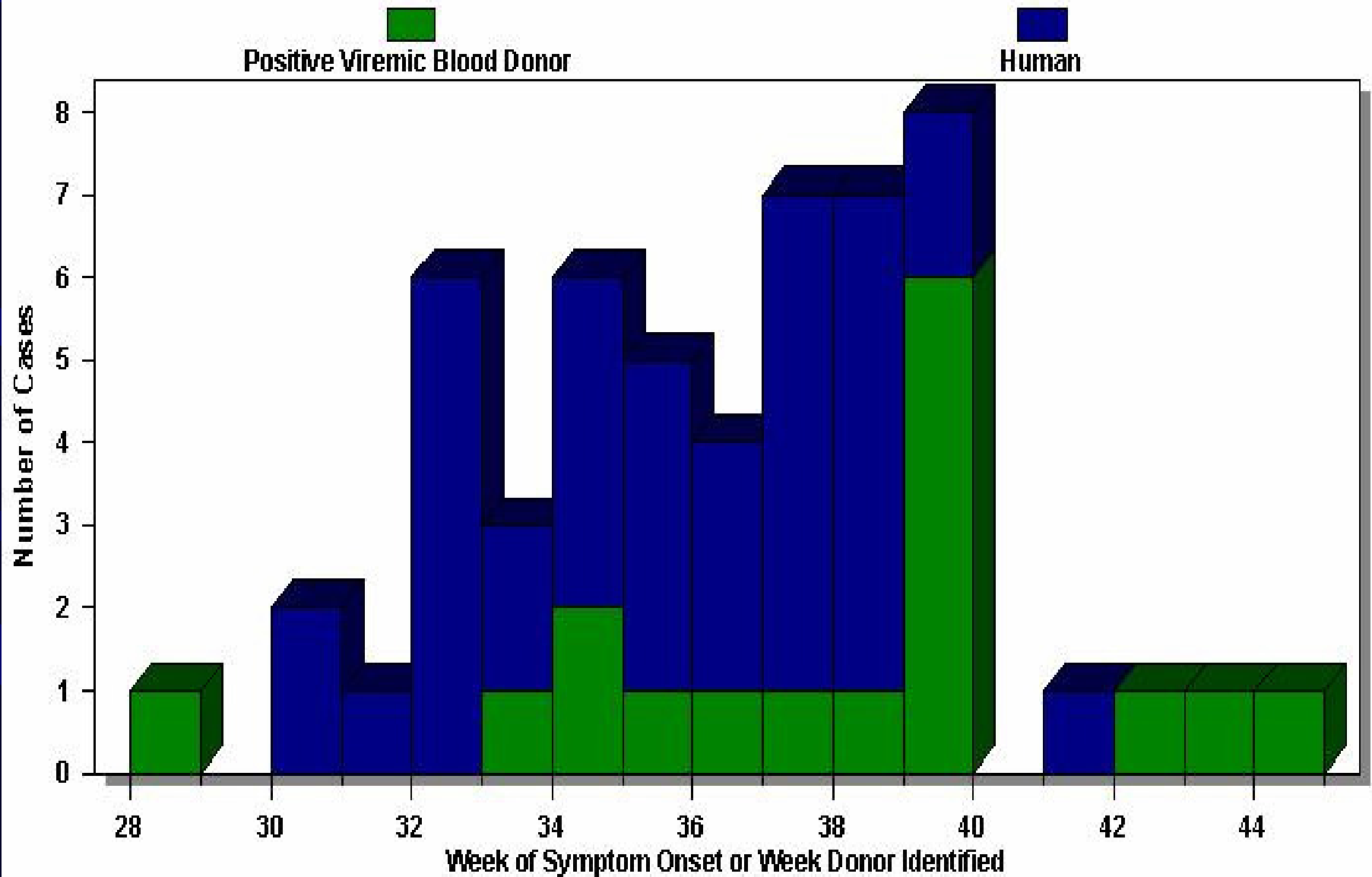
2005 Iowa West Nile Virus Surveillance

Human Epi Curve (n=37)

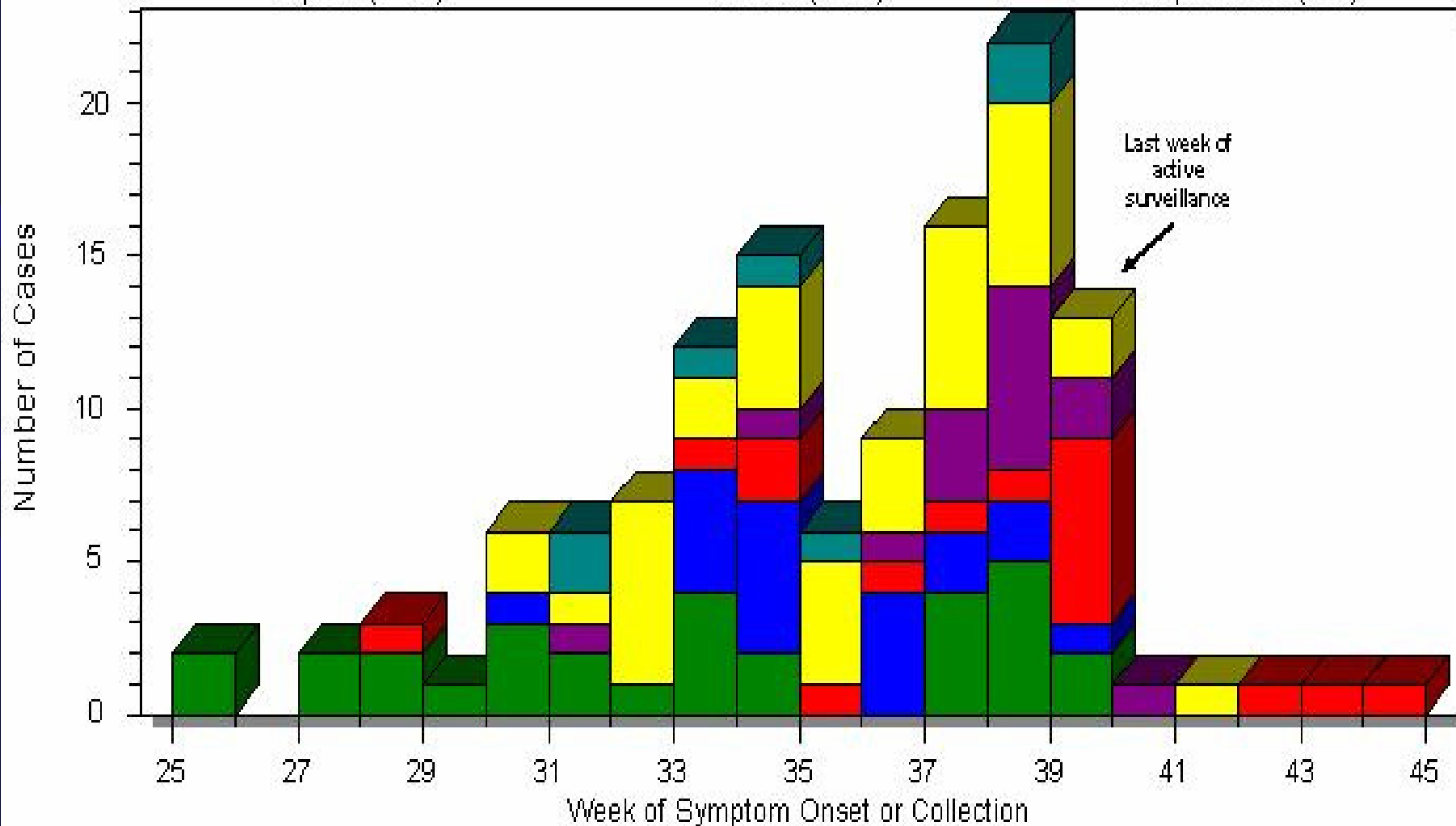


2005 Iowa West Nile Virus Surveillance

Epi Curve of Human Cases and Blood Donors

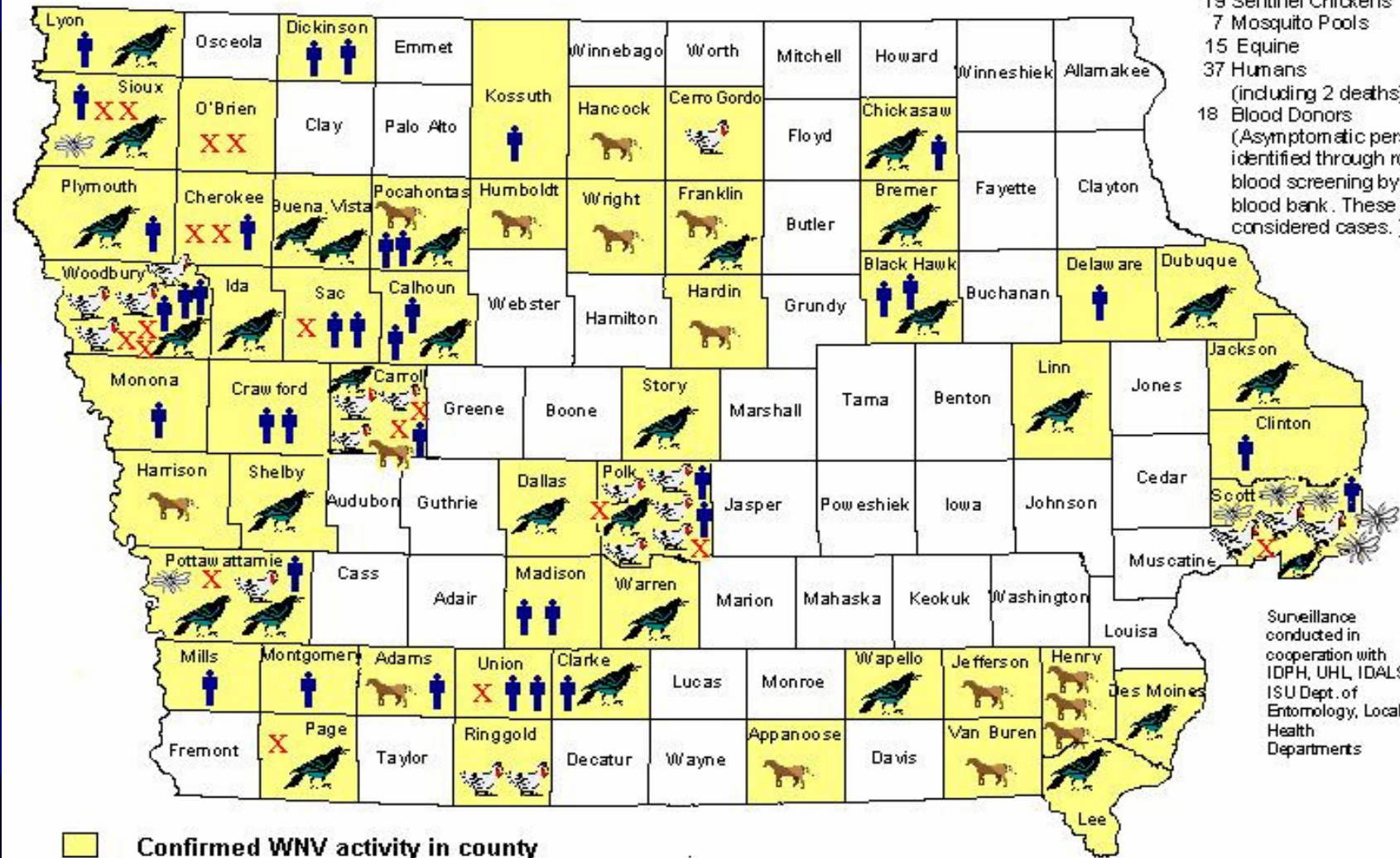


2005 Iowa West Nile Virus Surveillance



Updated 12/23/2005

West Nile Virus Activity – Iowa 2005



Case counts
 30 Birds
 19 Sentinel Chickens
 7 Mosquito Pools
 15 Equine
 37 Humans
 (including 2 deaths)
 18 Blood Donors
 (Asymptomatic persons identified through routine blood screening by the blood bank. These are not considered cases.)

Surveillance conducted in cooperation with IDPH, UHL, IDALS, ISU Dept. of Entomology, Local Health Departments

- Confirmed WNV activity in county
- Positive Bird
- Positive Equine
- Positive Sentinel Chickens
- Blood Donor
- Other Positive WNV Activity
- Positive Human
- Positive Mosquito Pools

Rabies

	2001	2002	2003	2004	2005
Human	0	1 (SH/P bat)	0	0	0
Bat	31	27	47	47	60
Skunk	28	27	38	28	33
Bovine	10	12	3	10	7
Equine	3	2	3	0	1
Canine	2	3	6	3	2
Feline	10	7	8	11	5
Badger	0	0	1	0	0
Fox	1 (big brown bat)	0	0	1 (skunk)	0
Total	85	79	106	100	108

Questions

