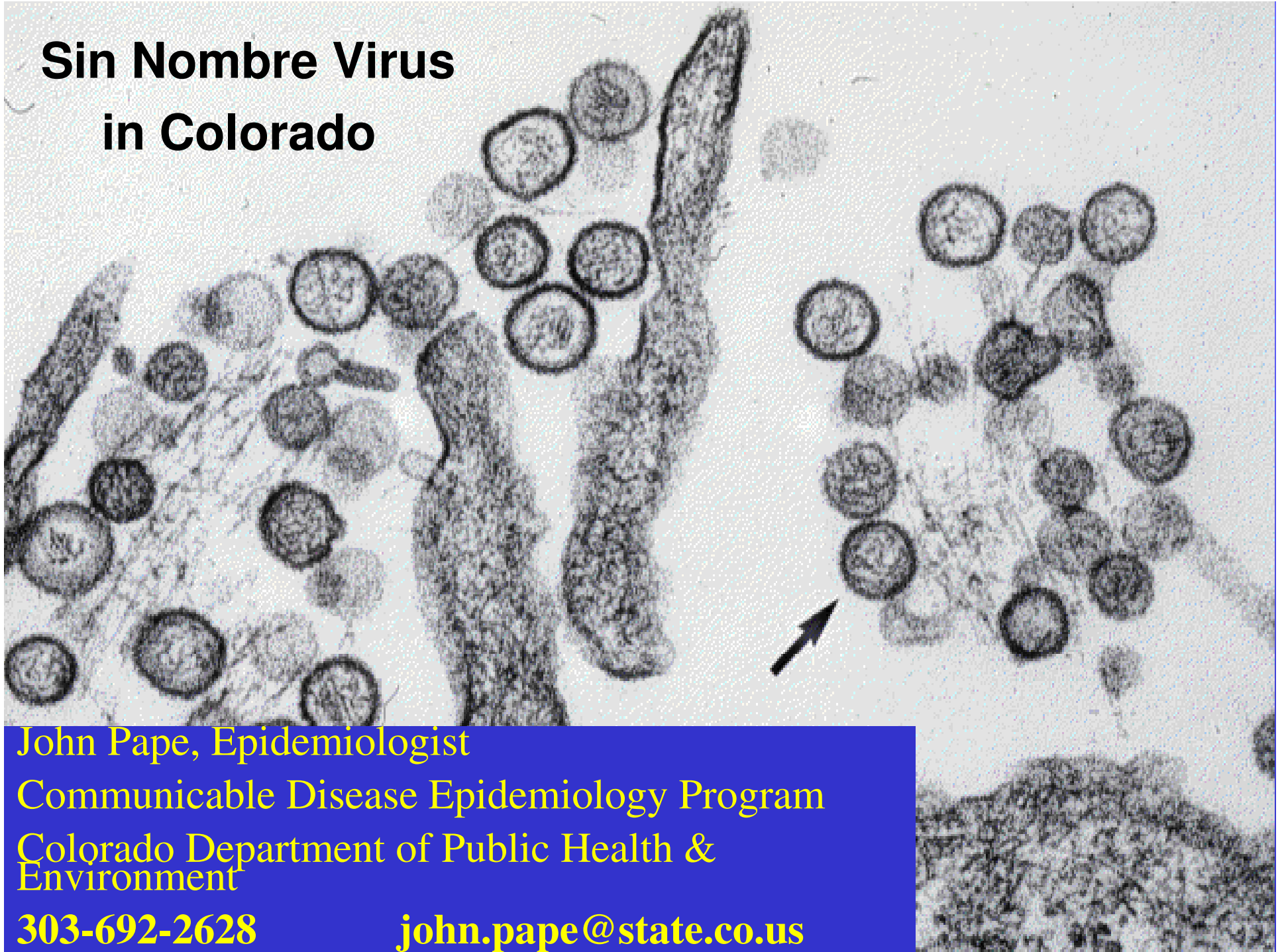


Sin Nombre Virus in Colorado



John Pape, Epidemiologist

Communicable Disease Epidemiology Program

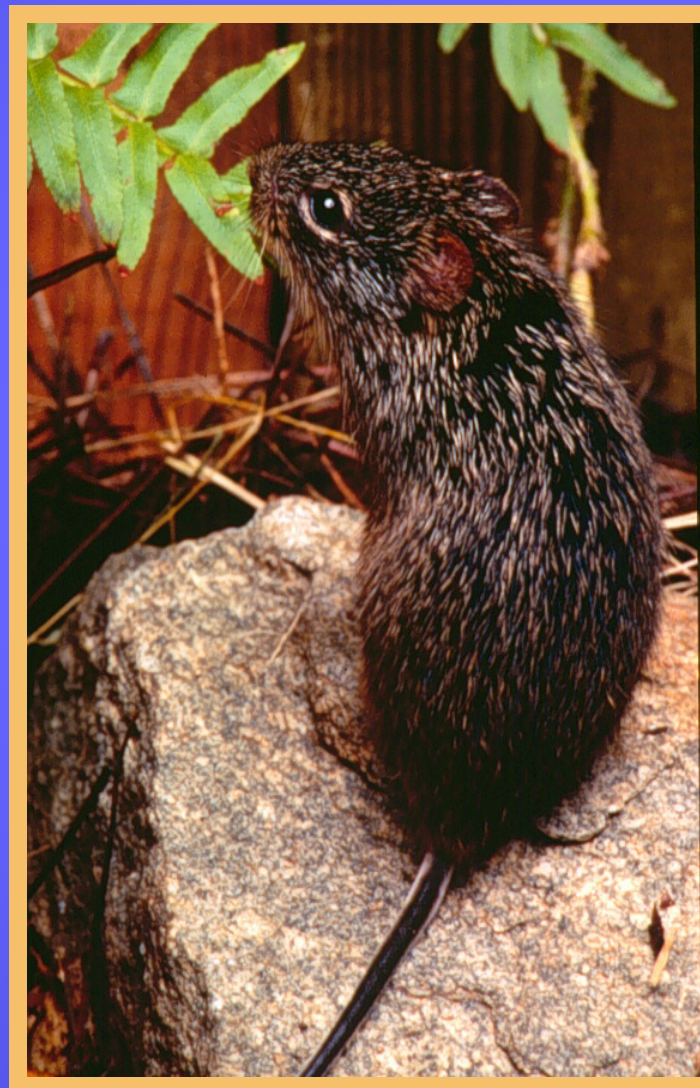
Colorado Department of Public Health &
Environment

303-692-2628

john.pape@state.co.us



Deer mouse



Cotton rat

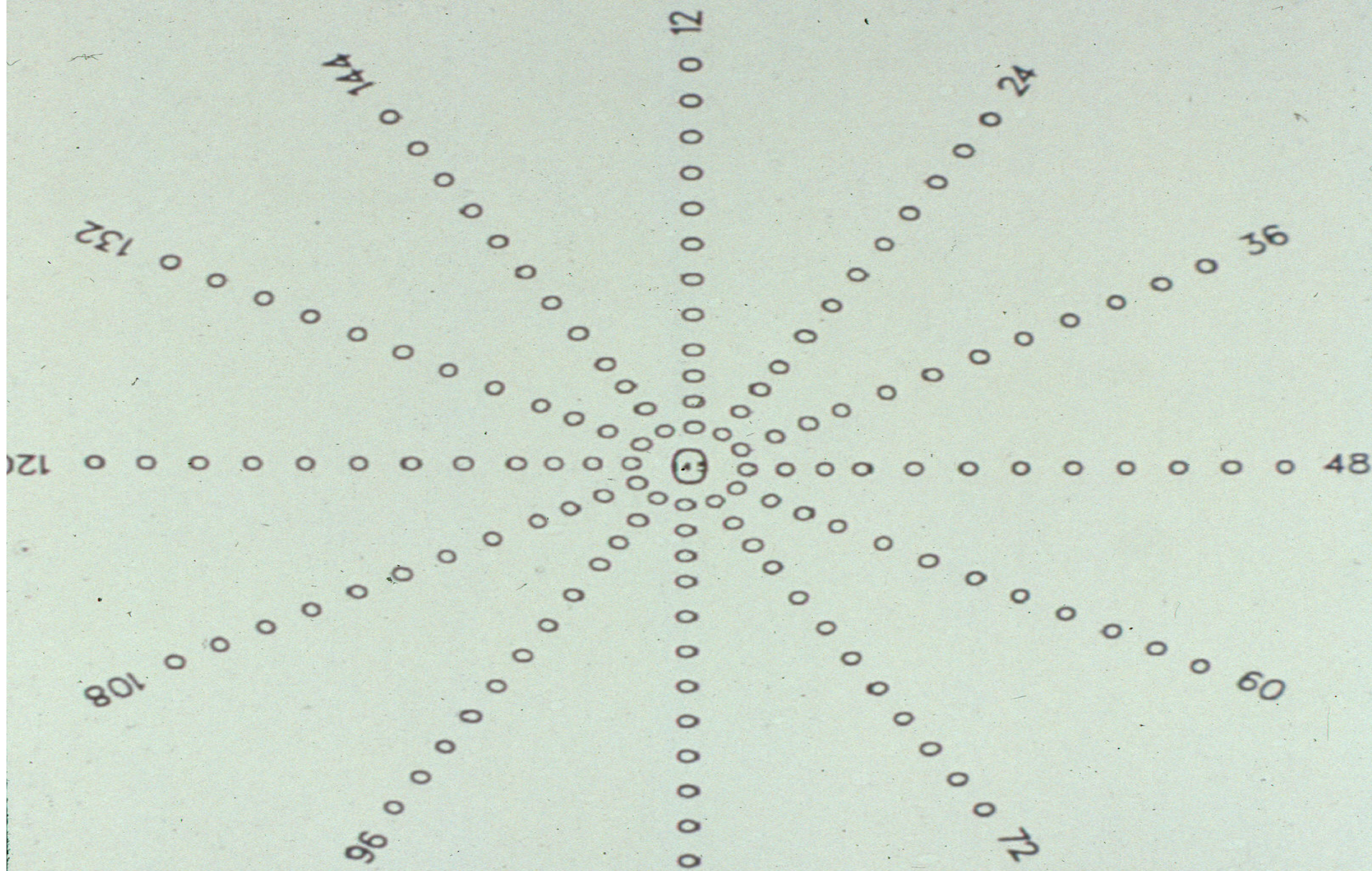




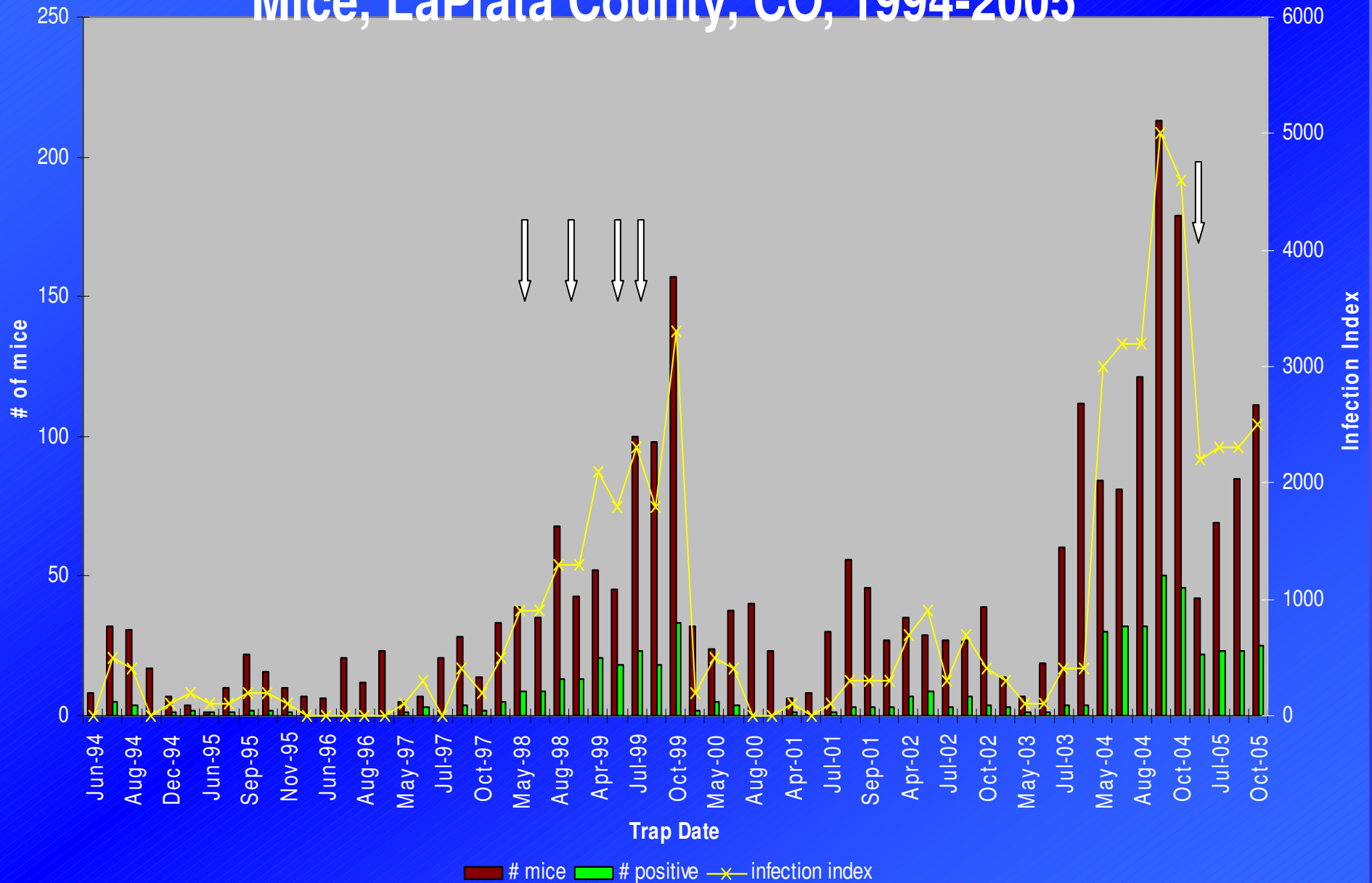
Year of the Rodent

- Record year for HPS cases (n=11)
 - Only 1 fatality
 - First 28 cases – 14 fatal (50%)
 - Last 20 cases – 3 fatal (15%)
- Cases reported statewide
 - 3 from SLV
 - SLV accounts for 12/49 (24%) of CO cases
- Two study sites (LaPlata/Mesa counties) showed increased deer mouse populations and rising infection rates in Fall '04 and Spring '05

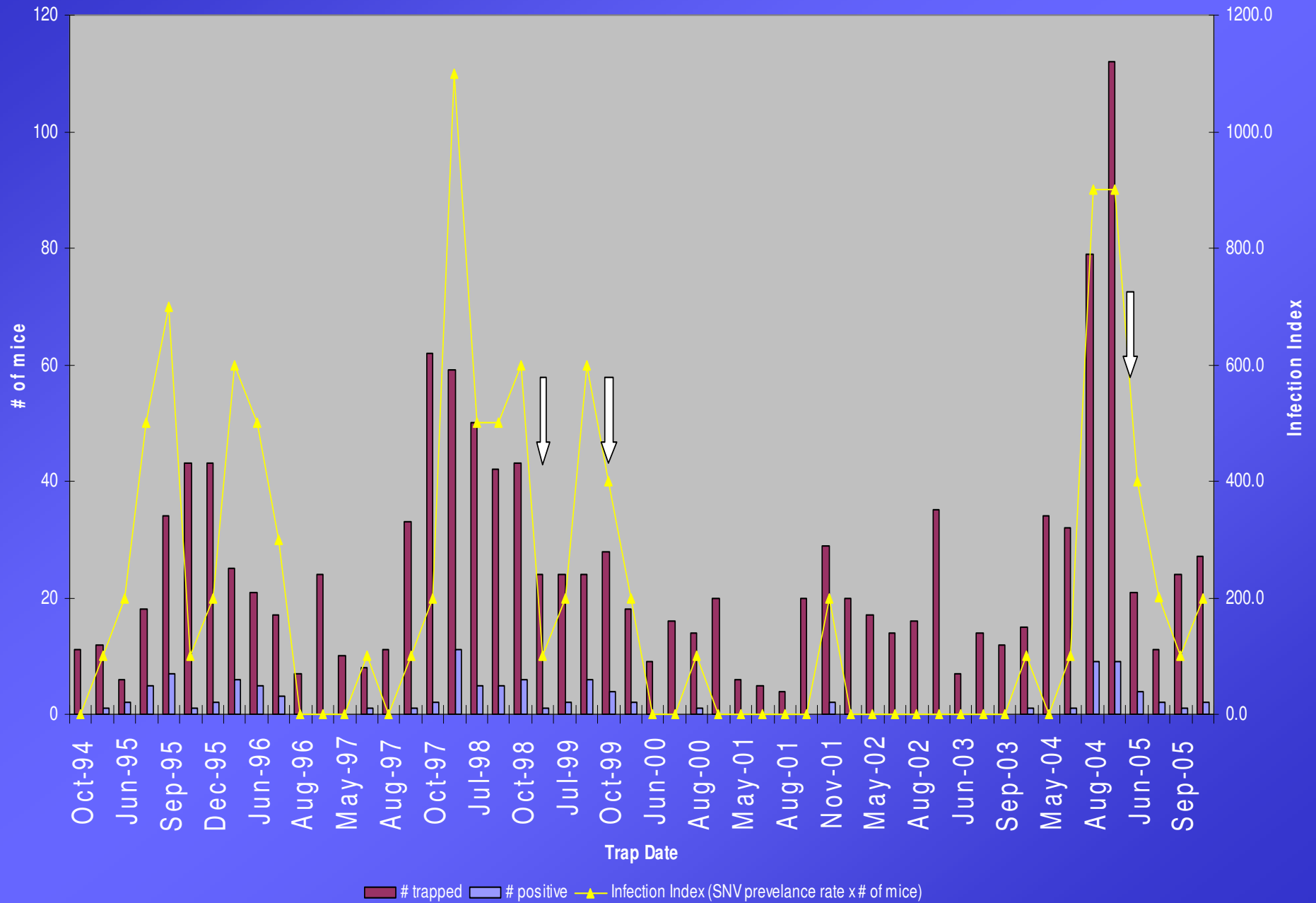
RODENT TRAPPING WEB NORTH



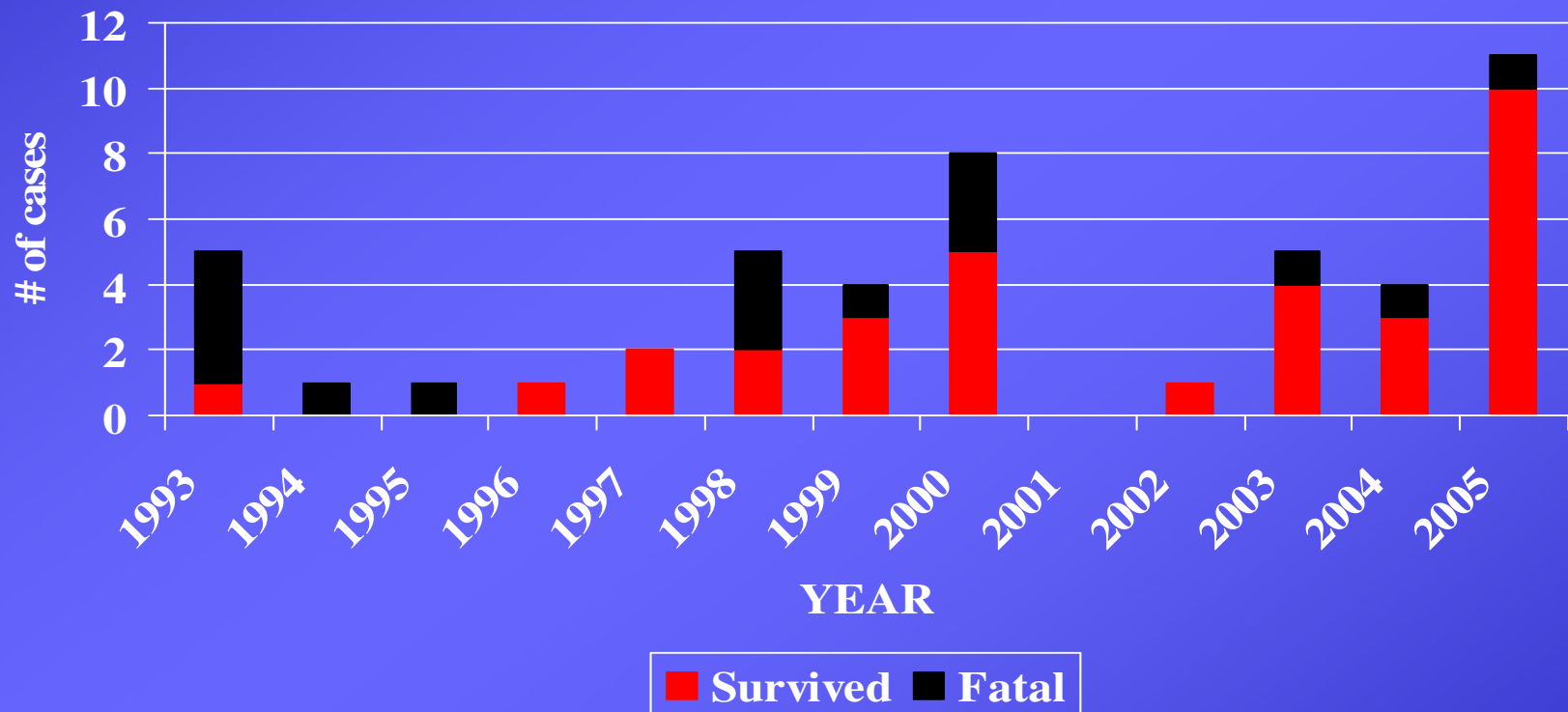
Sin Nombre Virus Antibody Prevalance of Deer Mice, LaPlata County, CO, 1994-2005



Sin Nombre Virus Antibody Prevalence of Deer Mice, Mesa County, CO



Hantavirus Pulmonary Syndrome (N=48+) by Year and Outcome, Colorado, 1993-2005

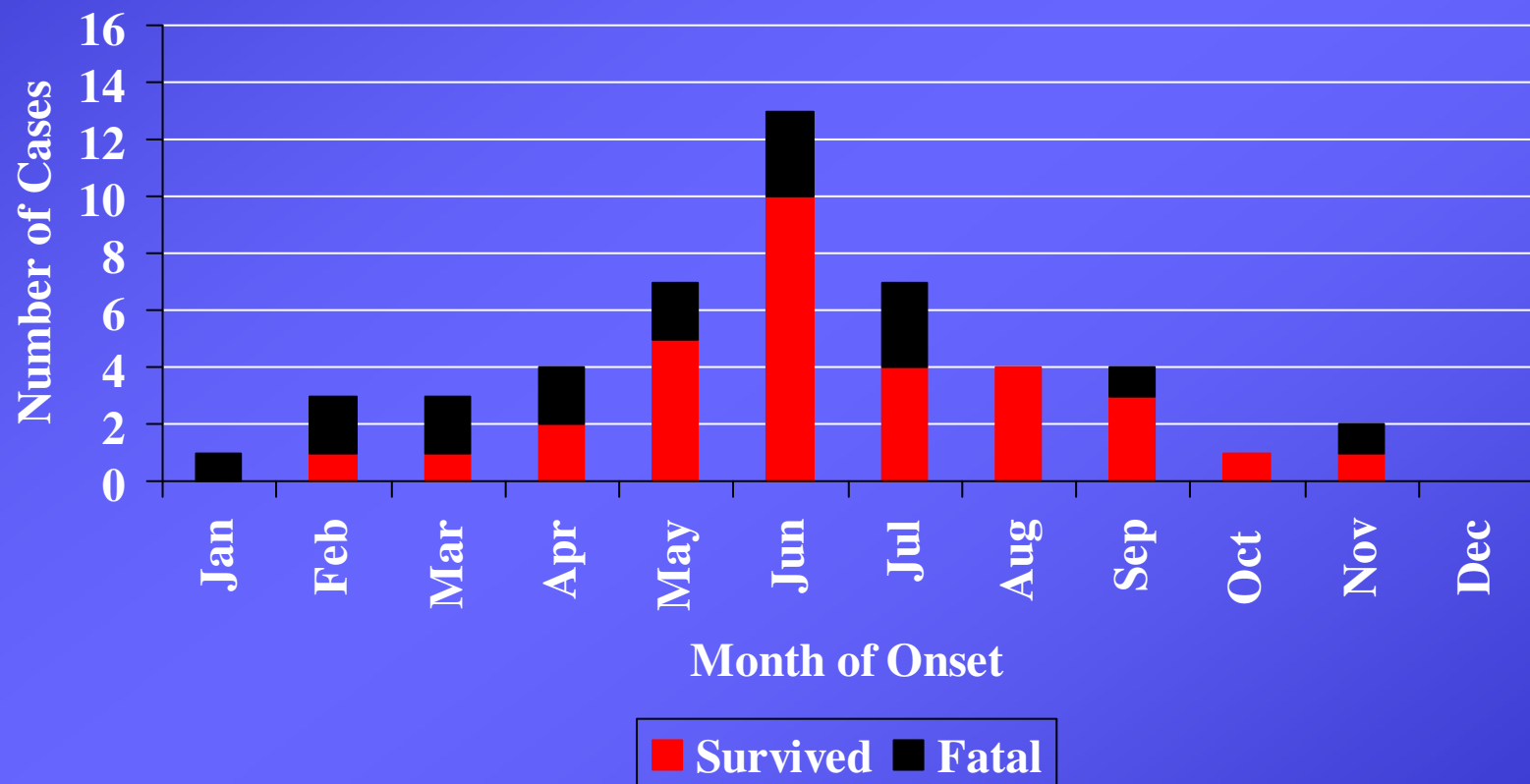


+ fatal case from 1985 not shown

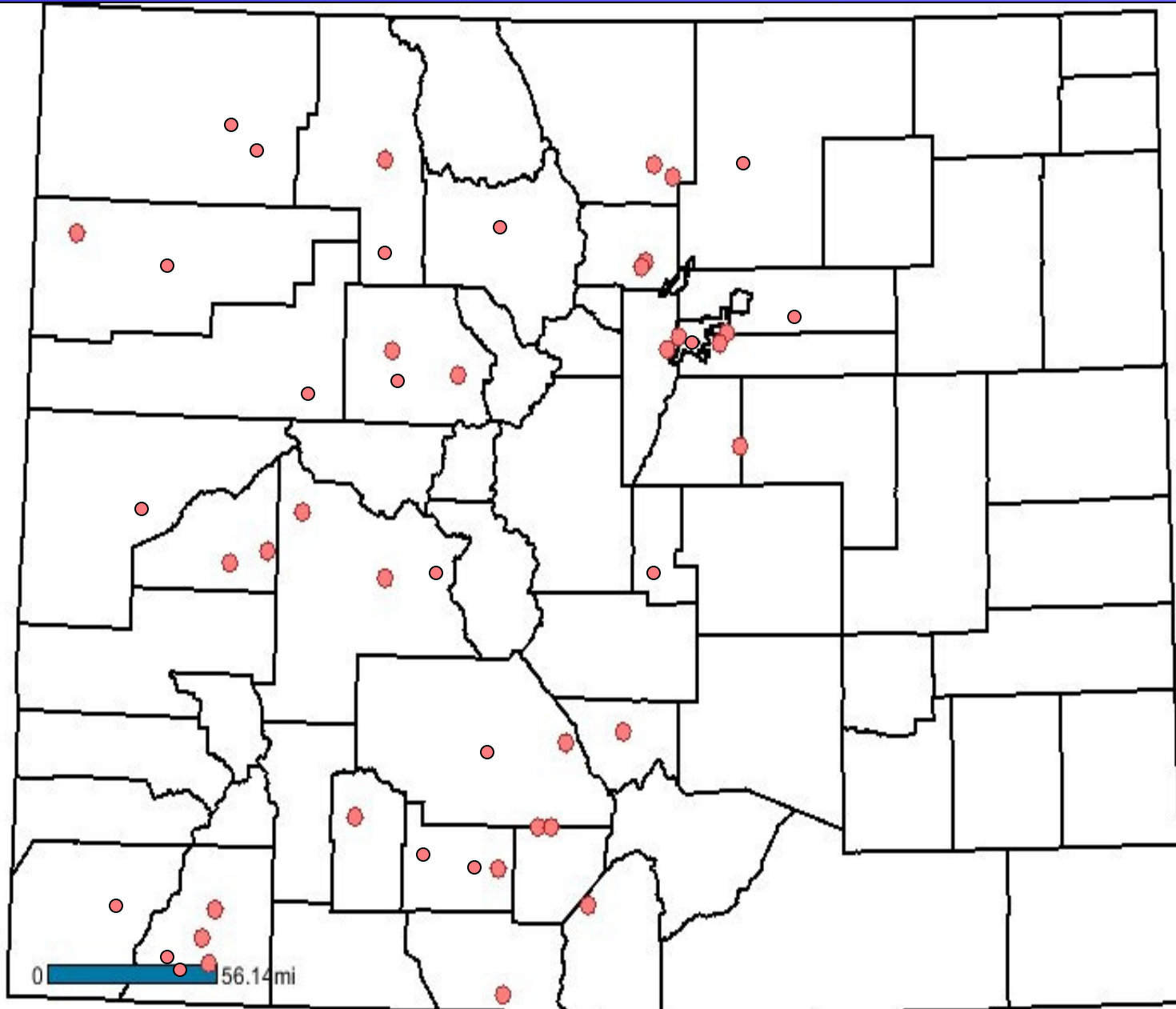
Case Demographics

- All Cases
 - Median age: 33 (range 12 – 69) years
 - 28 male (57%)
- Fatal Cases
 - Median age: 30.5 (range 15 – 69) years
 - 10 male (58%)

Hantavirus Pulmonary Syndrome Cases (n=49) by Month of Onset and Outcome, Colorado, 1985-2005



Colorado Hantavirus Pulmonary Syndrome Cases, By Residence, 1985-2005



Colorado Department
of Public Health
and Environment

0 56.14 mi

Clinical Clues for HPS

How do you find rare HPS among thousands of flu syndromes?

- Flu syndrome without rhinorhea, otitis, sinusitis, congestion, sneezing
- Nausea, vomiting, abdominal pain are often severe if present
- Cough does not begin on the first day of symptoms; begins after two or more days, accompanied by progressive dyspnea and heralds the onset of pulmonary edema
- During the prodrome , thrombocytopenia is the only lab sign
- A rapidly falling platelet count helps differentiate HPS

CLASSIC HERMAN®

Jim Unger



**“Did it ever cross your mind that maybe
you’re being outsmarted by a mouse?”**

Hantavirus Pulmonary Syndrome Prevention Recommendations

- Rodent-proof homes, barns and outbuildings
- Eliminate rodent harborage and food supplies
- Conduct ongoing rodent population reduction
- Use special precautions when working in or cleaning rodent-infested environments