



## Human Genome Epidemiology (HuGE) Review

### Seven Lipoprotein Lipase Gene Polymorphisms, Lipid Fractions, and Coronary Disease: A HuGE Association Review and Meta-Analysis

Gurdeep S. Sagoo, Iain Tatt, Georgia Salanti, Adam S. Butterworth, Nadeem Sarwar, Merel van Maarle, J. Wouter Jukema, Björn Wiman, John J. P. Kastelein, Anna M. Bennet, Ulf de Faire, John Danesh, and Julian P. T. Higgins

Initially submitted January 31, 2008; accepted for publication July 14, 2008.

Lipoprotein lipase (LPL) is a key enzyme in lipoprotein metabolism and a major candidate gene for coronary heart disease (CHD). The authors assessed associations between 7 *LPL* polymorphisms and lipid fractions and CHD risk in population-based cohort, case-control, and cross-sectional studies published by January 2007. Meta-analyses of 22,734 CHD cases and 50,177 controls in 89 association studies focused on the relations of the T-93G (rs1800590), D9N (rs1801177), G188E, N291S (rs268), *PvuII* (rs285), *HindIII* (rs320), and S447X (rs328) polymorphisms to high density lipoprotein cholesterol, triglycerides, myocardial infarction, or coronary stenosis. Carriers of 9N or 291S had modestly adverse lipid profiles. Carriers of the less common allele of *HindIII* or of 447X had modestly advantageous profiles. The combined odds ratio for CHD among carriers was 1.33 (95% confidence interval (CI): 1.14, 1.56) for 9N, 1.07 (95% CI: 0.96, 1.20) for 291S, 0.89 (95% CI: 0.81, 0.98) for the less common *HindIII* allele, and 0.84 (95% CI: 0.75, 0.94) for 447X. For T-93G (odds ratio (OR) = 1.22, 95% CI: 0.98, 1.52) and *PvuII* (OR = 0.96, 95% CI: 0.89, 1.04), there were null associations with lipid levels or CHD risk; information on G188E was limited (OR = 2.80, 95% CI: 0.88, 8.87). The study of *LPL* genotypes confirms the existence of close interrelations between high density lipoprotein cholesterol and triglyceride pathways. The influence of these genotypes on CHD risk warrants further investigation.

cholesterol, HDL; coronary disease; epidemiology; genetics; lipoprotein lipase; meta-analysis; myocardial infarction; triglycerides

Abbreviations: CHD, coronary heart disease; CI, confidence interval; HDL, high density lipoprotein; LPL, lipoprotein lipase.

#### BACKGROUND

##### Gene and gene variants

Lipoprotein lipase (LPL), an enzyme discovered in 1943 (1), plays a central role in lipid metabolism by hydrolyzing triglyceride-rich particles in muscle, adipose tissue, and macrophages, thereby generating free fatty acids and glycerol for energy utilization and storage (2, 3). LPL also plays a noncatalytic bridging role as a ligand in lipoprotein-cell surface interactions and receptor-mediated uptake of lipoproteins (4) with its ability to bind simultaneously to both lipoproteins and cell surface receptors. The *LPL* gene is

located on chromosome 8p22 (OMIM [Online Mendelian Inheritance in Man] number 609708), spanning approximately 35 kilobases. It contains 10 exons and encodes a 448-amino acid mature protein (5).

Since the identification of the first mutations in the *LPL* gene (6), more than 100 mutations have been identified (reviewed in detail by Murthy et al. (7)). Dozens of rare mutations in the *LPL* gene have been associated with markedly reduced enzyme activity (7), whereas several relatively common variants have been associated with moderate changes in LPL catalytic function. The highly polymorphic *LPL* gene and its many single nucleotide polymorphisms in both the coding region and the noncoding region have been

Correspondence to Dr. Julian P. T. Higgins, MRC Biostatistics Unit, Institute of Public Health, University of Cambridge, Forvie Site, Robinson Way, Cambridge CB2 0SR, United Kingdom (e-mail: julian.higgins@mrc-bsu.cam.ac.uk).

Table 1. Allele Frequencies Based on Combined Data From the Control Groups of Studies Identified for Inclusion in This Human Genome Epidemiology Review

Polymorphism (rs No. if Available)	Allele	Allele Frequency											
		Total					Whites					East Asians	
		Frequency, %	Range, %	No. of Studies	No. of Participants	Frequency, %	No. of Studies	No. of Participants	Frequency, %	No. of Studies	No. of Participants	No. of Studies	No. of Participants
T-93G (rs1800590)	G	1.6	0.8–6.8	7	10,395	1.5	5	9,112	NA	0			
D9N (rs1801177)	N	2.1	<0.1–8.0	21	18,518	1.5	16	15,494	NA	0			
G188E	E	0.03		3	8,595	0.03	2	8,445	NA	0			
N291S (rs268)	S	2.5	0.7–6.1	21	24,145	2.2	16	15,179	NA	0			
<i>PvuII</i> restriction enzyme site (rs285)	Absence of restriction site	46.3	32.5–55.1	18	8,807	48.5	11	1,928	38.9	3	351		
<i>HindIII</i> restriction enzyme site (rs320)	Absence of restriction site	28.7	20.1–46.5	23	5,244	29.1	15	3,540	28.9	4	479		
S447X (rs328)	X	9.9	5.6–21.1	26	20,233	10.3	18	16,612	12.2	3	391		

Abbreviations: NA, not available; rs, reference SNP.

studied for associations with lipids, lipoproteins, and atherosclerosis. The majority of these mutations are rare, although they can appear at a relatively high prevalence in specific subpopulations (7).

### Gene variant frequency

For this Human Genome Epidemiology review, we searched MEDLINE and EMBASE using the search terms specified in the Appendix for *LPL* gene polymorphisms that may be associated with coronary heart disease (CHD). We identified 7 that had been investigated in multiple studies. Characteristics of these polymorphisms are summarized in Web Figure 1 (posted on the *Journal's* website (<http://aje.oxfordjournals.org/>)), along with their proposed effects on enzyme function, a protein model, and evidence of linkage disequilibrium between pairs of variants. We estimated allele frequencies from the control groups of all studies identified for inclusion in this review (Table 1). The 2 restriction site enzyme variants (*PvuII* and *HindIII*) have high allele frequencies (46% and 29% respectively, for absence of the restriction site). The X allele of the S447X polymorphism has an approximate frequency of 10%, and the other variants (T-93G, D9N, and N291S) have frequencies less than 3%, with the E allele of the G188E variant having a frequency of only 0.03%, so that it does not qualify as a polymorphism.

We did not observe strong evidence of variation in allele frequencies by ethnicity (Table 1). On the basis of data from up to 1,758 white participants, strong linkage disequilibrium was reported between S447X and *HindIII* ( $D' \approx 0.9$ ), *PvuII* ( $D' \approx 0.9$ ), N291S ( $D' \approx 0.9$ ), and D9N ( $D' \approx -0.9$ ) and between T-93G and D9N ( $D' \approx 0.9$ ); moderate linkage disequilibrium was reported between *PvuII* and N291S ( $D' \approx 0.7$ ) and between *HindIII* and *PvuII* ( $D' \approx 0.6$ ) (8–11). On the basis of data from up to 467 East Asian participants, strong linkage disequilibrium was reported for the relation of S447X with *HindIII* ( $D' \approx 0.9$ ) and *PvuII* ( $D' \approx 0.9$ ) and for the relation of *HindIII* with *PvuII* ( $D' \approx 0.9$ ); moderate linkage disequilibrium of S447X with N291S ( $D' \approx 0.7$ ) was reported (12–14).

### Disease

CHD, including myocardial infarction, angina pectoris, and stenosis of the coronary arteries, is a leading cause of morbidity and mortality worldwide. It is the single most common cause of death in both the United States and the United Kingdom, accounting for approximately 1 in 5 deaths (15, 16). It is estimated that each year, about 700,000 Americans experience symptomatic first-ever myocardial infarction; a further 175,000 have “silent” myocardial infarction (i.e., without the normal indicators such as chest discomfort, shortness of breath, feeling dizzy or light-headed, or numbness in 1 or both arms); and a further 500,000 have recurrent myocardial infarction (16). In the United Kingdom, CHD accounts for more than 208,000 deaths each year (15). Although the death rate from CHD fell by 33% in the United States from 1994 to 2004 (16) and by 24% in the United Kingdom over the past decade (15), the condition remains the leading killer worldwide, and its

burden is rising rapidly in low- and middle-income countries, particularly in South Asia.

Established risk factors for CHD include modifiable factors (such as smoking and high cholesterol and blood pressure levels) and nonmodifiable factors (such as family history, ethnicity, and age). In recent decades, there has been investigation of the contribution of genetic variation to CHD risk, with earlier studies having focused principally on candidate genes involved in biologically plausible pathways associated with lipids and hemostasis. For example, apolipoprotein E genotypes have been shown to be linearly associated with concentrations of low density lipoprotein cholesterol and CHD risk (17). More recently, with the completion of projects such as the Human Genome Project (18, 19) and the International HapMap Project (20, 21), genome-wide association studies have used assumption-free approaches to investigate loci with as-yet-unknown biologic relevance (22–28). One particular locus, 9p21.3, has been replicated consistently (22, 23, 25, 27). A recent meta-analysis of the rs1333049 single nucleotide polymorphism (as a proxy marker for 9p21.3) in 12,004 cases and 28,949 controls showed strong evidence of association (odds ratio = 1.24, 95% confidence interval (CI): 1.20, 1.29) (29).

LPL is a key enzyme in lipoprotein metabolism, and it has been studied in relation to CHD risk. Previous meta-analyses, the most recent of which was published in 2006, have reported associations of some common *LPL* variants with circulating concentrations of LPL, high density lipoprotein (HDL) cholesterol, and triglycerides, as well as, more tentatively, CHD risk (30–33). However, the amount of data available has increased more than 3-fold since the last comprehensive review was carried out in 1999 (33). Moreover, interpretation of previous reviews has been complicated by their combination of studies conducted in general populations and those involving families.

## Objectives

Here we report results from a new meta-analysis of 89 association studies addressing the *LPL* gene, involving a total of 22,734 CHD cases and 50,177 controls. This analysis updates considerably the evidence available from previous meta-analyses (30–33). We focused on 7 polymorphisms (the T-93G, D9N, G188E, N291S, *Pvu*II, *Hind*III, and S447X variants (Web Figure 1)) and concentrations of HDL cholesterol and triglycerides as well as CHD outcomes (with initially separate consideration of myocardial infarction and coronary stenosis). The present report is restricted to population association studies (excluding family-based studies) and contains an investigation of potential sources of heterogeneity.

## METHODS

### Selection criteria and identification of studies

Eligible for inclusion were all population-based cohort, case-control, or cross-sectional studies reporting on associations of the 7 polymorphisms listed in Web Figure 1 with concentrations of HDL cholesterol or triglycerides or with risk of angiographic coronary stenosis (defined as at least

50% stenosis of 1 or more major coronary arteries) or myocardial infarction (defined by World Health Organization/MONICA [Monitoring of Trends and Determinants in Cardiovascular Disease] Study criteria). For lipid fractions, we used only data from apparently healthy controls (i.e., people without known coronary or other diseases or clinical lipid abnormalities).

We performed electronic searches, not limited to the English language, of MEDLINE, EMBASE, BIOSIS, the Science Citation Index, GDPInfo, and LocusLink, as described in the Appendix. The latest searches were undertaken on January 10 and 11, 2007. All relevant articles identified in the search were scanned on the basis of title, keywords, and abstract (where available) by one of us (I. T. or G. S. S.) and were rejected in the initial screening if the article clearly did not meet the inclusion criteria. Where a title/abstract could not be rejected with certainty, we obtained the full text of the article for evaluation. We also reviewed the reference lists of articles retrieved to identify relevant publications.

### Data collection

The following data were extracted independently by 2 investigators, using a piloted data extraction form (with any discrepancies being resolved by discussion and, when necessary, adjudicated by a third reviewer): genotype frequencies, by categorical disease outcome; mean values and standard deviations for lipid fractions, by genotype; mean age of cases; proportions of males and ethnic subgroups (defined as people of European continental ancestry, East Asians, or others); fasting status; genotyping and lipid assay methods; use of blinding of laboratory workers to participant case-control status; and linkage disequilibrium  $D'$  values among the 7 variants under study. For reports not printed in English, eligibility decisions and data extraction were done jointly by 1 author and a colleague fluent in the language of the report. We calculated allele frequencies from control groups only for each of the 7 variants, assuming Hardy-Weinberg equilibrium where appropriate. We compared key study characteristics such as location, time frame, authorship, and participant characteristics to determine the existence of multiple publications from the same study. In such situations, we extracted data from each report and included the most complete and up-to-date information in our analyses. Where important ambiguities remained or when data could not be extracted for inclusion in the meta-analysis, the investigators were contacted via letter and e-mail. We contacted all investigators who reported on CHD outcomes and investigators who reported on studies involving at least 250 participants for lipid fractions.

### Data analysis

Primary analyses were conducted using a dominant inheritance model to maximize the number of studies included. Subsidiary codominant analyses used weighted logistic regression or weighted linear regression for studies in which this could be done, yielding either a per-allele odds ratio for CHD outcomes or a per-allele difference in mean lipid levels, respectively. Although triglyceride levels are typically skewed, we analyzed values on the original scale,

following the majority of reported findings, which would give appropriate confidence intervals for large sample sizes. Where mean values and standard deviations were given for log triglyceride levels, we converted these to approximate means and standard deviations for crude levels, assuming a log-normal distribution (34). For 3 studies (35–37) that included separate groups of nonoverlapping coronary stenosis cases and nonfatal myocardial infarction cases with a single (overlapping) control group, we analyzed the different case groups separately and then combined them into a single CHD group to avoid double-counting of individuals. Deviance from Hardy-Weinberg equilibrium was assessed for the controls of each study using the exact test if the genotype frequencies were low (38). Since tests for deviation from Hardy-Weinberg equilibrium are known to have low power, we calculated the fixation coefficient, interpreting an absolute value greater than 0.03 as an indication of serious departure from Hardy-Weinberg equilibrium (38, 39). We conducted meta-analyses of fixation coefficients to assess global evidence of departure from Hardy-Weinberg equilibrium across studies (40).

Consistency of the gene effect sizes across studies was assessed using a test for heterogeneity and the  $I^2$  statistic, which describes the percentage of total variation in point estimates attributable to genuine variation rather than sampling error (41). Funnel plots and associated statistical tests (42, 43) were used to assess assumptions involved in meta-analysis and to explore the relation between precision and magnitude of association. To assess reporting biases, we compared CHD associations in published data with those in data we obtained by correspondence.

In our meta-analyses, we used a standard approach, weighting by precision and incorporating random effects to allow for the variation in true associations across studies. We included studies irrespective of any departure from Hardy-Weinberg equilibrium. We explored interstudy variation by prespecified subgrouping of studies according to sample size (<100, 100–499,  $\geq 500$ ), ethnicity (white, East Asian), source of controls (general population, hospital), design (retrospective, prospective), and blinding of genotyping to clinical outcome (yes, no, unknown). We conducted sensitivity analyses by repeating the meta-analyses assuming recessive, codominant, and unspecified (44) inheritance models and by performing fixed-effect meta-analyses. Results for lipid levels are expressed as percentage changes, obtained by applying absolute differences to mean levels in noncarriers, estimated as the overall weighted mean (1.33 mmol/L for HDL cholesterol, 1.53 mmol/L for triglycerides). All analyses were conducted using our own STATA programs, with meta-analyses performed using the “metan” subroutine (45).

## RESULTS

### Characteristics of the included studies

Literature searches yielded 6,202 reports, of which 104 were eligible studies (8–14, 35, 36, 46–139). Eighty-nine of these studies contributed to the present meta-analyses (8–14, 35, 36, 46–51, 67–139) (Web Tables 1 and 2 (<http://aje.oxfordjournals.org/>)); 15 studies (52–66) (comprising only

about 6% of potentially eligible CHD cases and only about 11% of potentially eligible controls) could not be included because of insufficient detail and lack of response to correspondence (Web Table 3 (<http://aje.oxfordjournals.org/>)). Investigators in 2 studies (108, 140) provided unpublished data. Study-level characteristics for the Stockholm Heart Epidemiology Program have previously been published (140).

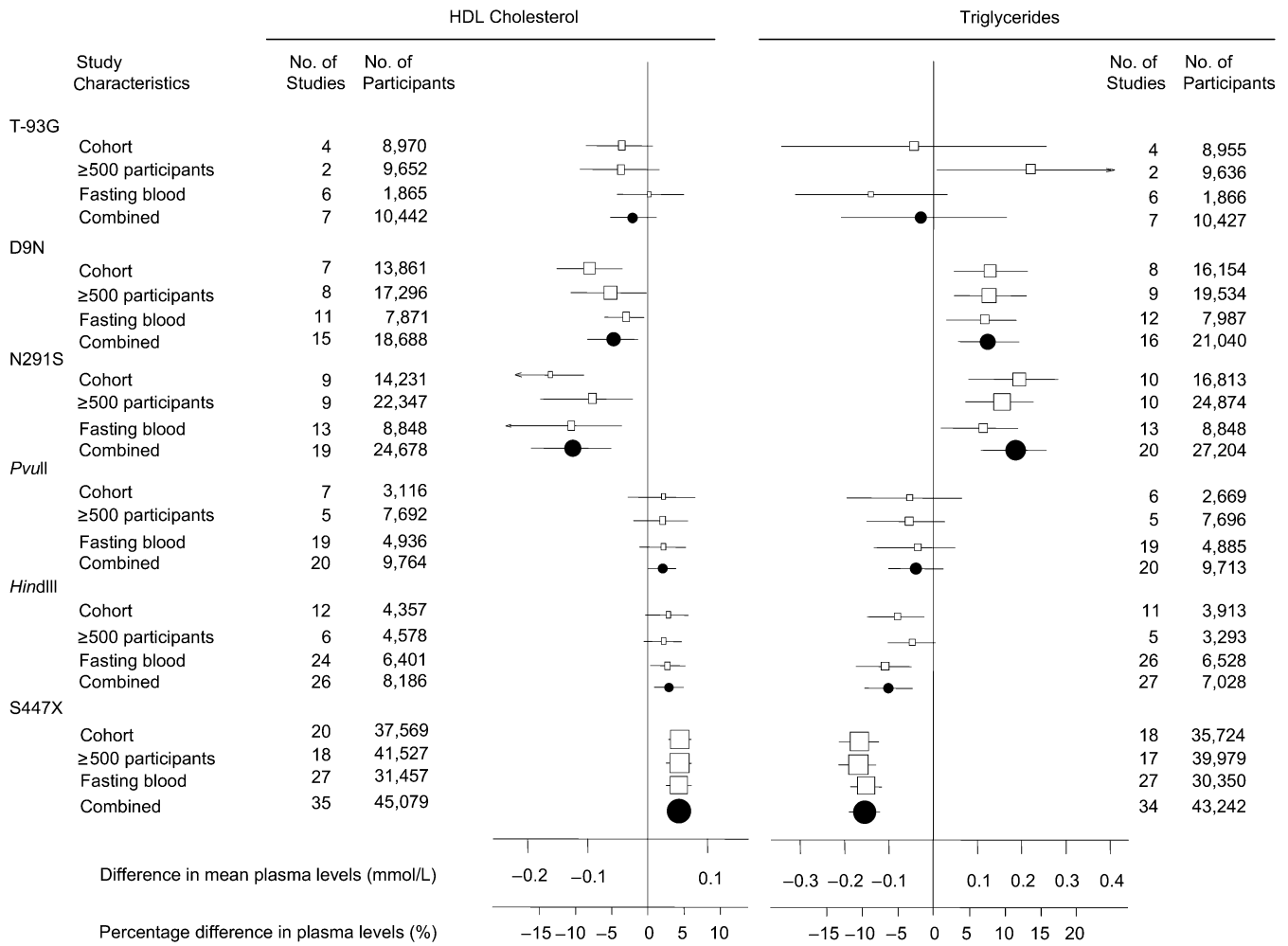
Fifty contributing studies on CHD outcomes (Web Table 1), published between 1991 and 2006, were undertaken in a wide range of geographic settings, with 80% (18,103 of 22,734) of cases having white European continental ancestry, 3% (794 of 22,734) East Asian, and 17% (3,837 of 22,734) other ethnic origins (including Mexican-American and Turkish). Nine studies on CHD outcomes were prospective in design, including nested case-control studies (and therefore involved “internal” population controls), and 41 were retrospective, of which 21 involved population-based controls, 14 involved hospital-based controls, and 6 involved controls from other sources (e.g., workplaces). Of 22 (44%) studies that reported on blinding of laboratory workers to case-control status, 17 reported blinded assessments of genotypes and 5 reported unblinded assessments.

Investigators in 73 contributing studies reported on lipid fractions in articles published between 1989 and 2006 (Web Table 2), including 45 (62%) prospective studies and 28 (38%) case-control studies (with only noncases contributing to the lipid analyses). In 63 (86%) of these studies, investigators obtained blood samples after an overnight fast. Restriction fragment length polymorphism was the most common genotyping method. Twenty-one (42%) studies of CHD outcomes provided supplementary tabular data, as did 29 (40%) studies of lipid fractions.

In total, 9 studies were found to deviate from Hardy-Weinberg equilibrium according to the exact test ( $P < 0.05$ ) (for studies of CHD outcomes: Qian et al. (124) (*HindIII*), Thorn et al. (132) (*PvuII*), Duman et al. (102) (*PvuII*), Ferencak et al. (105) (*D9N*), and Keavney et al. (117) (*N291S*); for studies of HDL cholesterol: Zhang et al. (50) (*HindIII*) and Duman et al. (102) (*PvuII*); for studies of triglycerides: Zhang et al. (50) (*HindIII*) and Duman et al. (102) (*PvuII*)). Approximately 60% of the studies had fixation coefficients with absolute values larger than 0.03. However, for all polymorphisms, they seemed evenly distributed around 0 (results are presented in Web Table 4 (<http://aje.oxfordjournals.org/>) for those outcome groups with 3 or more studies by polymorphism). Pooled meta-analysis of the fixation coefficients for each polymorphism did not indicate substantial overall deviation from Hardy-Weinberg equilibrium in a common direction (data not shown). Estimation of the inheritance model from the data typically yielded estimates with confidence intervals that did not exclude any of the inheritance models. For 2 polymorphisms, however, the recessive model was not supported by the data (not shown): *HindIII* (data for CHD outcomes only) and S447X (CHD outcomes and HDL cholesterol data).

### Associations with lipid fractions

Figure 1 summarizes associations of the variants under study with HDL cholesterol and triglyceride concentrations;



**Figure 1.** Associations between plasma high density lipoprotein (HDL) cholesterol and triglyceride levels and 6 polymorphisms of the lipoprotein lipase gene, grouped by various study characteristics using a dominant genetic model (carriers vs. noncarriers). Point estimates are shown as unfilled boxes for subgroup analyses and filled circles for the overall combined analyses. Horizontal lines, 95% confidence interval.

results for each individual study are provided in Web Figures 2 and 3 (<http://aje.oxfordjournals.org/>). Based on data on up to 10,442 participants, carriers of the -93G polymorphism had 0.02 mmol/L (95% CI: -0.02, 0.06) lower HDL cholesterol levels and 0.02 mmol/L (95% CI: -0.17, 0.21) lower triglyceride levels than noncarriers. Based on data on up to 21,040 participants, carriers of the 9N polymorphism had 0.05 mmol/L (95% CI: 0.02, 0.09) lower HDL cholesterol levels and 0.14 mmol/L (95% CI: 0.08, 0.20) higher triglyceride levels than noncarriers. Based on data on up to 27,204 participants, carriers of the 291S polymorphism had 0.12 mmol/L (95% CI: 0.07, 0.18) lower HDL cholesterol levels and 0.19 mmol/L (95% CI: 0.12, 0.26) higher triglyceride levels than noncarriers. There was evidence of considerable heterogeneity in the HDL cholesterol findings ( $I^2 = 83%$ , 95% CI: 75, 88;  $P < 0.0001$ ). Based on data on up to 9,764 participants, carriers of the less common allele of the PvuII polymorphism had 0.03 mmol/L (95% CI: 0.00, 0.05) higher HDL cholesterol levels and 0.04

mmol/L (95% CI: -0.02, 0.10) lower triglyceride levels than noncarriers. Based on data on up to 8,186 participants, carriers of the less common allele of the HindIII polymorphism had 0.04 mmol/L (95% CI: 0.02, 0.06) higher HDL cholesterol levels and 0.09 mmol/L (95% CI: 0.05, 0.14) lower triglyceride levels than noncarriers. Based on data on up to 45,079 participants, carriers of the 447X polymorphism had 0.05 mmol/L (95% CI: 0.04, 0.07) higher HDL cholesterol levels and 0.15 mmol/L (95% CI: 0.12, 0.19) lower triglyceride levels than noncarriers. We express these findings in terms of percentage differences in lipid fractions in Table 2.

Associations between each of these LPL variants and lipid fractions did not vary materially when analyses using recessive or codominant inheritance models were performed or when results were grouped by study design, size, or fasting status (Figure 1) or by ethnicity or source of controls (not shown). Only the funnel plot of HindIII and triglycerides suggested the possibility of an excess of smaller studies

**Table 2.** Comparison of Findings of the Present Meta-Analysis of Data From 89 Studies (Including 22,734 Cases of Coronary Heart Disease and 50,177 Controls) With Those Reported in Previous Meta-Analyses of 7 Polymorphisms in the Lipoprotein Lipase Gene, Obtained Using the Same Genetic Model (Carriers vs. Noncarriers)

Variant	Previous Review			Present Review		
	Study Details (Ref. No.)	% Difference or OR	95% CI	Study Details	% Difference or OR	95% CI
<i>High Density Lipoprotein Cholesterol Levels<sup>a</sup></i>						
T-93G	Not done			7 studies; 10,442 participants	-2 <sup>c</sup>	-5, 2
D9N	4 studies; 4,999 participants (33)	-6 <sup>b</sup>	-9, -3	15 studies; 18,688 participants	-4	-7, -2
G188E	Not done <sup>d</sup>			Not done		
N291S	8 studies; 14,760 participants (33)	-9	-11, -7	19 studies; 24,678 participants	-9	-14, -5
PvuII	Not done			20 studies; 9,764 participants	2	0, 4
HindIII	Not done			26 studies; 8,186 participants	3	2, 5
S447X	7 studies; 4,388 participants (33)	3	2, 5	35 studies; 45,079 participants	4	3, 5
<i>Triglyceride Levels<sup>a</sup></i>						
T-93G	Not done			7 studies; 10,427 participants	-1 <sup>c</sup>	-14, 11
D9N	5 studies; 6,496 participants (33)	20	9, 33	16 studies; 21,040 participants	9	5, 13
G188E	Not done <sup>d</sup>			Not done		
N291S	8 studies; 15,509 participants (33)	31	20, 43	20 studies; 27,204 participants	12	8, 17
PvuII	Not done			20 studies; 9,713 participants	-3	-7, 1
HindIII	Not done			27 studies; 7,028 participants	-6	-9, -3
S447X	8 studies; 4,567 participants (33)	-8	-11, -4	34 studies; 43,242 participants	-10	-12, -8
<i>Coronary Heart Disease<sup>e</sup></i>						
T-93G	Not done			7 studies; 5,045 cases, 10,395 controls	1.22 <sup>f</sup>	0.98, 1.52
D9N	3 studies; 979 cases, 981 controls (33)	1.4	0.8, 2.4	20 studies; 9,792 cases, 18,469 controls	1.33	1.14, 1.56
G188E	1 study; 948 cases, 9,259 controls (33)	4.9	1.2, 19.6	2 studies; 2,374 cases, 8,445 controls	2.80	0.88, 8.87
N291S	4 studies; 2,252 cases, 10,235 controls (33)	1.2	0.9, 1.5	21 studies; 13,883 cases, 24,145 controls	1.07	0.96, 1.20
PvuII	6 studies; 2,618 sample size (30)	0.90	0.80, 1.01	18 studies; 8,407 cases, 8,807 controls	0.96	0.89, 1.04
HindIII	6 studies; 2,259 sample size (30)	0.84	0.73, 0.96	23 studies; 6,226 cases, 5,244 controls	0.89	0.81, 0.98
S447X	5 studies; 1,576 cases, 1,862 controls (33)	0.8	0.7, 1.0	26 studies; 11,046 cases, 20,223 controls	0.84	0.75, 0.94

Abbreviations: CI, confidence interval; OR, odds ratio.

<sup>a</sup> Percent differences are given for high density lipoprotein cholesterol and triglyceride levels.

<sup>b</sup> Because the mean difference in high density lipoprotein cholesterol levels between carriers and noncarriers in the previous review was reported as absolute difference in mmol/L (rather than as percentage difference), the percentage difference has been calculated using the mean level in noncarriers from the present meta-analysis.

<sup>c</sup> By application of estimated mean difference to weighted mean value across noncarrier groups, confidence intervals reflect uncertainty in absolute difference in means.

<sup>d</sup> The G188E variant has been previously reviewed (30, 31, 33), but those reviews included familial studies and so have not been included here.

<sup>e</sup> Odds ratios are given for coronary heart disease.

<sup>f</sup> A random-effects meta-analysis will tend to have wider confidence intervals despite the larger set of cases and controls. Previous meta-analyses used fixed-effect models (30) or unclear models (33), whereas our analysis uses random-effects models. This explains why our intervals are not necessarily narrower despite large increases in data.

with striking results (data available upon request), but even for these analyses, findings in the larger studies (which may be less prone to selective reporting) were very similar to the overall results.

#### Associations with CHD risk

The odds ratios for myocardial infarction and coronary stenosis were similar within each of the 7 variants studied

**Table 3.** Relations Between 7 Lipoprotein Lipase Polymorphisms and Coronary Heart Disease Outcomes in a Meta-Analysis of Data From 89 Studies (Including 22,734 Cases and 50,177 Controls), Obtained Using a Dominant Genetic Model (Carriers vs. Noncarriers)

Variant	All CHD					Nonfatal Myocardial Infarction					Coronary Stenosis							
	No. of Studies <sup>b</sup>	No. of Cases	No. of Controls	OR	95% CI	<i>I</i> <sup>2</sup> , % <sup>a</sup>	No. of Studies	No. of Cases	No. of Controls	OR	95% CI	<i>I</i> <sup>2</sup> , %	No. of Studies	No. of Cases	No. of Controls	OR	95% CI	<i>I</i> <sup>2</sup> , %
T-93G	7	5,045	10,395	1.22	0.98, 1.52 <sup>c</sup>	9.5	3	2,360	9,576	1.27	0.91, 1.78	35.4	5	2,685	8,807	1.22	0.88, 1.71	17.3
D9N	20	9,792	18,469	1.33	1.14, 1.56 <sup>d</sup>	17.2	10	4,829	12,524	1.22	1.01, 1.48	20.2	9	4,618	10,652	1.42	1.15, 1.76	0.5
G188E	2	2,374	8,445	2.80	0.88, 8.87	0.0	NA	NA	NA	NA	NA	NA	NA	NA	NA	NA	NA	NA
N291S	21	13,883	24,145	1.07	0.96, 1.20 <sup>d</sup>	4.6	10	9,153	17,758	1.03	0.91, 1.16	0.0	11	4,397	10,383	1.05	0.87, 1.28	0.0
PvuII	18	8,407	8,807	0.96	0.89, 1.04	2.6	5	5,474	6,891	0.95	0.83, 1.09	19.9	13	2,933	1,916	0.97	0.85, 1.11	0.0
HindIII	23	6,226	5,244	0.89	0.81, 0.98	15.7	9	2,809	3,091	0.88	0.79, 0.98	5.9	15	3,376	2,085	0.91	0.77, 1.07	43.1
S447X	26	11,046	20,223	0.84	0.75, 0.94 <sup>d</sup>	49.8*	11	6,033	16,031	0.87	0.75, 1.00	49.2	16	4,851	11,229	0.83	0.70, 0.98	51.0

Abbreviations: CHD, coronary heart disease; CI, confidence interval; NA, not available; OR, odds ratio.

\*  $P < 0.01$  ( $P$  for heterogeneity).<sup>a</sup>  $I^2$  is a measure of the extent to which between-study variation is not due to chance alone, on a scale from 0% to 100%.<sup>b</sup> Because studies such as the Copenhagen City Heart Study (37) contained multiple case groups that were combined in the overall analysis and because of the inclusion of studies with CHD outcomes other than myocardial infarction or coronary stenosis (death by CHD), the number of studies is not always the sum of the 2 clinical subgroups.<sup>c</sup> The Copenhagen City Heart Study (37) was included in both CHD subgroup analyses, but only the nonoverlapping cases were combined for the total CHD analysis because both case groups shared the same overlapping control group (to avoid double counting of the control group).<sup>d</sup> In addition to the Copenhagen City Heart Study (37), the total CHD outcome also included data from an unpublished study (8) investigating death by CHD.

(Table 3), encouraging combined analyses of the 2 CHD outcomes. Using a dominant genetic model, the combined odds ratios for total CHD were 1.22 (95% CI: 0.98, 1.52) for carriers of -93G (5,045 cases, 10,395 controls), 1.33 (95% CI: 1.14, 1.56) for carriers of 9N (9,792 cases, 18,469 controls), 2.80 (95% CI: 0.88, 8.87) for carriers of 188E (2,374 cases, 8,445 controls), 1.07 (95% CI: 0.96, 1.20) for carriers of 291S (13,883 cases, 24,145 controls), 0.96 (95% CI: 0.89, 1.04) for carriers of the less common allele of *PvuII* (8,407 cases, 8,807 controls), 0.89 (95% CI: 0.81, 0.98) for carriers of the less common allele of *HindIII* (6,226 cases, 5,244 controls), and 0.84 (95% CI: 0.75, 0.94) for carriers of 447X (11,046 cases, 20,223 controls). There was little evidence of heterogeneity among the available studies, with the exception being studies of S447X ( $I^2 = 50\%$ , 95% CI: 11, 67;  $P = 0.003$ ). Findings did not change materially when different inheritance models were assumed or when studies were grouped by genotyping conditions, type of controls used, or study size (Figure 2) or by ethnicity or study design (not shown). We did not observe visual or statistically significant asymmetry in funnel plots, and published data were not consistently nearer to (or further away from) the null than data obtained via correspondence. Web Figures 4–9 (<http://aje.oxfordjournals.org/>) plot the available data for each variant.

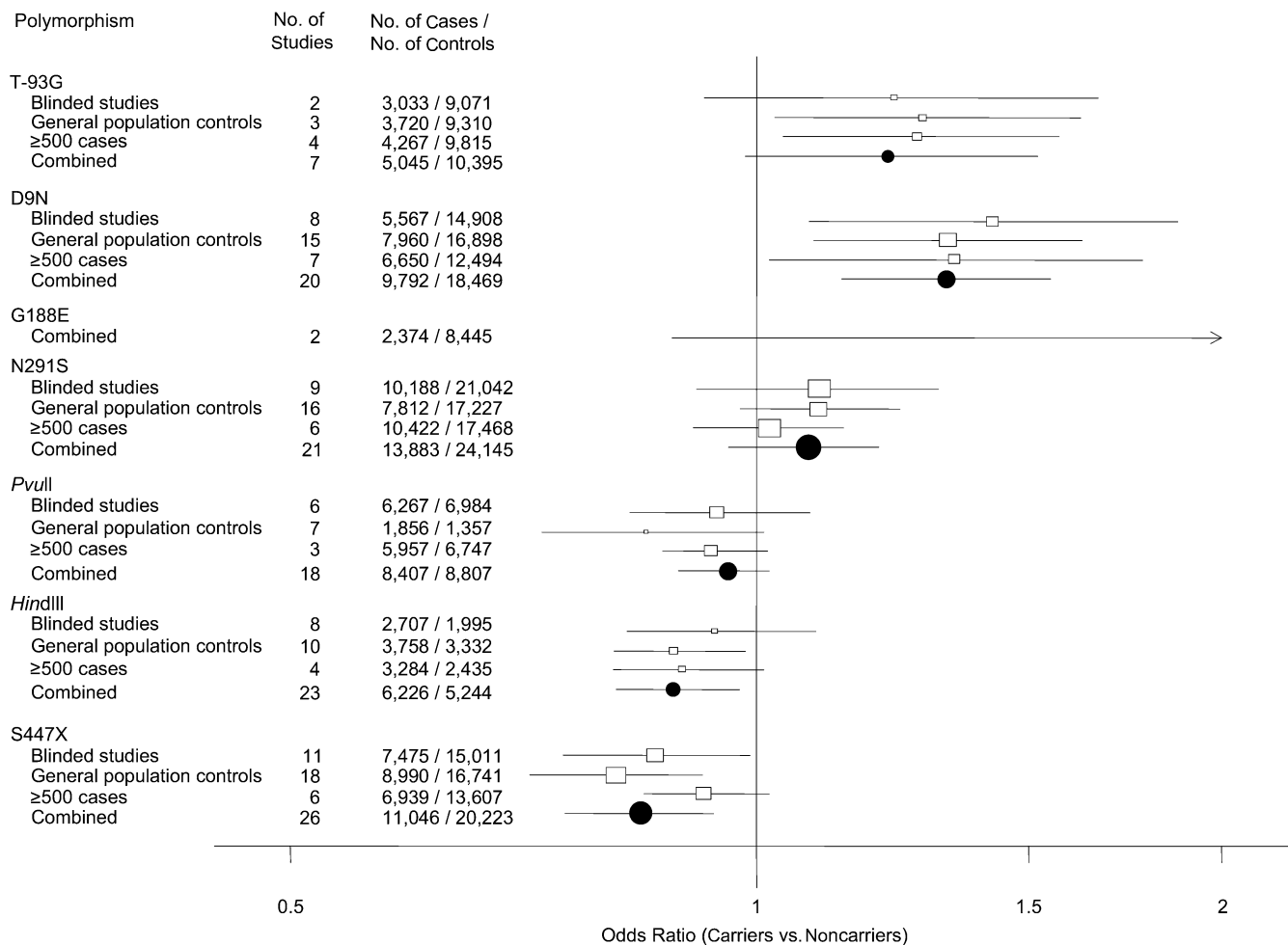
## DISCUSSION

### Main findings

We have presented new data and meta-analysis results on the associations between 7 *LPL* polymorphisms and HDL cholesterol, triglycerides, and CHD risk in 22,734 cases and 50,177 controls from 89 studies, counting every study's cases and controls only once. Four variants (i.e., 9N, 291S, *HindIII*, and 447X) were each found to have modest and opposing effects on HDL cholesterol and triglyceride concentrations, suggestive of close interrelations between pathways regulating these lipid fractions. Our findings, based on 3 times as many data as in earlier reviews (30, 31, 33), indicate that the percentage increases in triglyceride levels in carriers of the 9N or 291S alleles are approximately 10% for each, rather than the 20%–30% increases previously reported (Table 2). In addition, the direction of association between CHD risk and carrier status for each of 9N, 291S, *HindIII*, and 447X was consistent with their corresponding lipid effects; however, as noted below, further data are needed to enhance precision in this regard. Proposed guidelines for assessing the strength of evidence from gene-disease association studies (141) would designate the findings as showing “moderate” evidence for S447X, D9N, and *HindIII* and “weak” evidence for the other 4 variants (Web Table 5 (<http://aje.oxfordjournals.org/>)).

### Limitations

Although available data on each of 6 polymorphisms in this review (i.e., all those but G188E) comprised at least 5,000 CHD cases and at least 5,000 controls, there was still insufficient power to reliably assess relative risk reductions



**Figure 2.** Meta-analyses of studies of coronary heart disease and 7 polymorphisms of the lipoprotein lipase gene, grouped by various study characteristics using a dominant genetic model (carriers vs. noncarriers). No filled circle is shown for G188E because the point estimate is off the scale. Point estimates are shown as unfilled boxes for subgroup analyses and filled circles for the overall combined analysis. Horizontal lines, 95% confidence interval.

of approximately 10%–20% in carriers of these *LPL* alleles, particularly for the less common polymorphisms studied. Without data on individual participants, we were unable to conduct more detailed analyses (e.g., studies of haplotypes or investigation of any joint effects of gene-gene or gene-lipid factors), direct assessment in these populations of the impact of changes in lipid concentrations on CHD risk, or “Mendelian randomization” analyses (142). Nonetheless, previous prospective studies of HDL cholesterol and triglycerides suggest that even the modest changes observed in these lipid concentrations related to *LPL* variants should be associated with an approximately 10% change in the risk of CHD, if the lipid markers have causal effects (143).

We did not find evidence of appreciable biases affecting the results of the studies. Subgrouping of studies by characteristics such as design, source of controls, laboratory methods, and use of blinding did not reveal any major differences; and case definitions were comparable across studies, so the likelihood of spectrum bias is low. However,

this does not mean that the studies were free from internal biases. A more substantial potential problem is reporting bias, in the form of either selective reporting of findings within the identified studies or the omission of whole studies with less striking findings. Although we reduced the scope of publication bias through collation of unreported data by correspondence with authors (and we noted that findings were similar in previously unreported studies and in published studies), it remains impossible to exclude entirely the likelihood of reporting biases in literature-based meta-analyses (144–146). Nevertheless, at least for the lipid outcomes studied, any material effect seems unlikely given the scale and consistency of the findings observed in the larger studies.

### Biology

The observed associations between *LPL* variants and concentrations of HDL cholesterol and triglycerides may help correlate genetic epidemiology with current understanding



of the LPL enzyme's structure and function. The modestly adverse lipid profile in carriers of 9N or 291S is consistent with reduced enzyme activity owing to amino acid substitutions in the N-terminal domain of LPL (see Web Figure 1), the part of the enzyme that is important for catalytic function (147). In particular, the 291S variant (i.e., the Asn291Ser substitution) is located in a heparin-binding cluster and may therefore affect the interaction of LPL with the cell wall glycosaminoglycans, whereas the 9N variant (the Asp9Asn substitution) is situated near a glycosylation site that may influence overall catalytic activity and secretion (148). By contrast, the modestly advantageous lipid profile in carriers of the 447X variant (the Ser447Ter substitution) is consistent with the increased receptor binding affinity that this 2-amino acid truncation confers on the C-terminal domain (see Web Figure 1), the part of the enzyme important for the LPL-mediated uptake of lipoproteins by receptors on the cell surface (149–151). This change could explain the altered lipid profile seen in carriers of 447X, as well as in carriers of the intronic *HindIII* variant, which is in nearly complete linkage disequilibrium with 447X.

#### Potential public health impact and other implications of results

Each of several *LPL* variants, known to be in linkage disequilibrium, has modest effects on HDL cholesterol and triglyceride concentrations, as well as modest associations with CHD risk in directions consistent with their respective lipid effects. At present, the potential public health impact is limited, given the small magnitude of these associations. Studies involving at least 10,000 cases and a similar number of controls with concomitant information on genetic and lipid markers would be required to enhance precision appreciably in relation to CHD and to facilitate informative Mendelian randomization analyses. Such studies would also permit investigation of any interactions among *LPL* (and other genetic) variants and assessment of haplotype-based associations.

#### CONCLUSION

The modest and opposing effects of each of 4 *LPL* variants on HDL cholesterol and triglyceride concentrations underscore the close interrelations between these lipid pathways. Although the associations of these *LPL* genotypes with CHD risk each pointed in directions consistent with their respective lipid effects, larger genetic studies will be required to judge the relevance of these lipid markers to CHD.

#### ACKNOWLEDGMENTS

Author affiliations: United Kingdom HuGENet Coordinating Centre, Strangeways Research Laboratory, Cambridge, United Kingdom (Gurdeep S. Sagoo, Adam S. Butterworth, Julian P. T. Higgins); MRC Biostatistics Unit, Institute of Public Health, University of Cambridge, Cambridge, United Kingdom (Gurdeep S. Sagoo, Julian P. T.

Higgins); F. Hoffman-La Roche, Basel, Switzerland (Iain Tatt); Department of Hygiene and Epidemiology, University of Ioannina School of Medicine, Ioannina, Greece (Georgia Salanti); Department of Public Health and Primary Care, School of Clinical Medicine, University of Cambridge, Strangeways Research Laboratory, Cambridge, United Kingdom (Adam S. Butterworth, Nadeem Sarwar, Anna M. Bennet, John Danesh); Division of Cardiovascular Epidemiology, Institute of Environmental Medicine, Karolinska Institutet, Stockholm, Sweden (Merel van Maarle, Ulf de Faire); Department of Cardiology, Leiden University Medical Center, Leiden, the Netherlands (J. Wouter Jukema); Durrer Center for Cardiogenetic Research, Amsterdam, the Netherlands (J. Wouter Jukema); Department of Clinical Chemistry, Karolinska University Hospital, Stockholm, Sweden (Björn Wiman); Department of Vascular Medicine, Academic Medical Center, Amsterdam, the Netherlands (John J. P. Kastelein); and Department of Cardiology, Karolinska University Hospital, Stockholm, Sweden (Ulf de Faire).

This review was supported by research grants from the United Kingdom Department of Health and the United Kingdom Department of Trade and Industry held under the program of the Cambridge Genetics Knowledge Park. G. Sagoo was supported by a research grant from the PHG Foundation held by the MRC Biostatistics Unit. A. Butterworth was supported by a personal award from the United Kingdom National Institute for Health Research. J. Danesh was supported by the British Heart Foundation, and aspects of this work have been supported by an unrestricted educational grant to J. Danesh from GlaxoSmithKline (London, United Kingdom) and from the Raymond and Beverly Sackler Award in the Medical Sciences. The Stockholm Heart Epidemiology Program (SHEEP) Study was supported by grants from the Swedish Research Council (projects 05193 and 009533), the Swedish Heart and Lung Foundation (projects 199941395, 200041272, and 20070439), the King Gustaf V and Queen Victoria's Foundation, and the EUROGENDIS/Marie Curie Fellowship. J Higgins was supported by grant U.1052.00.011 from the United Kingdom Medical Research Council.

Data extraction was carried out by Adam Dickinson, Dr. Angela Frodsham, Dr. Kelsey Juzwishin, and Dr. Jerry Wheeler. Translation was provided by Drs. Edgar Hau and Elena Rockhill. The lipoprotein lipase model depicted in Web Figure 1 was constructed by Dr. Wataru Nemoto. Data were provided by Drs. Dragan Alavantic, Jeffrey L. Anderson, Rolf V. Andersen, Yasumichi Arai, Matthew Ban, Larry Baum, Pascale Benlian, Gerald S. Berenson, Matthijs Boekholdt, Jolanda M. A. Boer, Claude Bouchard, Hannia Campos, Gudny Eiriksdottir, Frederic Fumeron, Mark O. Godarzi, Robert A Hegele, Benjamin D. Horne, Mara Hutz, Turgay Isbir, Maria Cristina Izar, Bernard Keavney (on behalf of the ISIS [International Studies of Infarct Survival] Collaborative Group), Michel Marre, Gerold Moennig, Olga Mustafina, Liisa Myllykangas, Borge G. Nordestgaard, Domingos Rios, Jochen G. Schneider, Bozena Smolkova, E. Shyong Tai, Anne Tybjaerg-Hansen, Takao Urabe, Frank M van Bockxmeer, David Wilcken, and Hans H. Wittrup.

Conflict of interest: none declared.

## REFERENCES

- Hahn PF. Abolishment of alimentary lipemia following injection of heparin. *Science*. 1943;98(2531):19–20.
- Goldberg IJ. Lipoprotein lipase and lipolysis: central roles in lipoprotein metabolism and atherogenesis. *J Lipid Res*. 1996;37(4):693–707.
- Olivecrona G, Olivecrona T. Triglyceride lipases and atherosclerosis. *Curr Opin Lipidol*. 1995;6(5):291–305.
- Beisiegel U, Weber W, Bengtsson-Olivecrona G. Lipoprotein lipase enhances the binding of chylomicrons to low density lipoprotein receptor-related protein. *Proc Natl Acad Sci U S A*. 1991;88(19):8342–8346.
- Fisher RM, Humphries SE, Talmud PJ. Common variation in the lipoprotein lipase gene: effects on plasma lipids and risk of atherosclerosis. *Atherosclerosis*. 1997;135(2):145–159.
- Langlois S, Deeb S, Brunzell JD, et al. A major insertion accounts for a significant proportion of mutations underlying human lipoprotein lipase deficiency. *Proc Natl Acad Sci U S A*. 1989;86(3):948–952.
- Murthy V, Julien P, Gagne C. Molecular pathobiology of the human lipoprotein lipase gene. *Pharmacol Ther*. 1996;70(2):101–135.
- Boer JMA, Hoebee B, Verschuren WMM, et al. Smoking and overweight modulate the effect of LPL gene polymorphisms on the risk of cardiovascular diseases [abstract]. *Eur Heart J*. 2003;24(suppl):347.
- Georges JL, Régis-Bailly A, Salah D, et al. Family study of lipoprotein lipase gene polymorphisms and plasma triglyceride levels. *Genet Epidemiol*. 1996;13(2):179–192.
- Gerdes C, Fisher RM, Nicaud V, et al. Lipoprotein lipase variants D9N and N291S are associated with increased plasma triglyceride and lower high-density lipoprotein cholesterol concentrations: studies in the fasting and postprandial states. The European Atherosclerosis Research Studies. *Circulation*. 1997;96(3):733–740.
- Rios DL, Vargas AF, Ewald GM, et al. Common variants in the lipoprotein lipase gene in Brazil: association with lipids and angiographically assessed coronary atherosclerosis. *Clin Chem Lab Med*. 2003;41(10):1351–1356.
- Arai Y, Hirose N, Yamamura K, et al. Deficiency of cholesteryl ester transfer protein and gene polymorphisms of lipoprotein lipase and hepatic lipase are not associated with longevity. *J Mol Med*. 2003;81(2):102–109.
- Shimo-Nakanishi Y, Urabe T, Hattori N, et al. Polymorphism of the lipoprotein lipase gene and risk of atherothrombotic cerebral infarction in the Japanese. *Stroke*. 2001;32(7):1481–1486.
- Ye P, Pei L, Wang S. Polymorphisms of the human lipoprotein lipase gene: possible association with lipid levels in patients with coronary heart disease in Beijing area. *Chin Med Sci J*. 1996;11(3):157–161.
- Allender S, Peto V, Scarborough P, et al. *Coronary Heart Disease Statistics 2007*. London, United Kingdom: British Heart Foundation; 2007. (<http://www.heartstats.org/homepage.asp>).
- Rosamond W, Flegal K, Friday G, et al. Heart disease and stroke statistics—2007 update: a report from the American Heart Association Statistics Committee and Stroke Statistics Subcommittee. *Circulation*. 2007;115(5):e69–e171.
- Bennet AM, Di Angelantonio E, Ye Z, et al. Association of apolipoprotein E genotypes with lipid levels and coronary risk. *JAMA*. 2007;298(11):1300–1311.
- Lander ES, Linton LM, Birren B, et al. Initial sequencing and analysis of the human genome. *Nature*. 2001;409(6822):860–921.
- Venter JC, Adams MD, Myers EW, et al. The sequence of the human genome. *Science*. 2001;291(5507):1304–1351.
- International HapMap Consortium. A haplotype map of the human genome. *Nature*. 2005;437(7063):1299–1320.
- Frazer KA, Ballinger DG, Cox DR, et al. A second generation human haplotype map of over 3.1 million SNPs. *Nature*. 2007;449(7164):851–861.
- Wellcome Trust Case Control Consortium. Genome-wide association study of 14,000 cases of seven common diseases and 3,000 shared controls. *Nature*. 2007;447(7145):661–678.
- Helgadottir A, Thorleifsson G, Manolescu A, et al. A common variant on chromosome 9p21 affects the risk of myocardial infarction. *Science*. 2007;316(5830):1491–1493.
- Larson MG, Atwood LD, Benjamin EJ, et al. Framingham Heart Study 100K project: genome-wide associations for cardiovascular disease outcomes [electronic article]. *BMC Med Genet*. 2007;8(suppl 1):S5.
- McPherson R, Pertsemlidis A, Kavaslar N, et al. A common allele on chromosome 9 associated with coronary heart disease. *Science*. 2007;316(5830):1488–1491.
- Ozaki K, Ohnishi Y, Iida A, et al. Functional SNPs in the lymphotoxin-alpha gene that are associated with susceptibility to myocardial infarction. *Nat Genet*. 2002;32(4):650–654.
- Samani NJ, Erdmann J, Hall AS, et al. Genomewide association analysis of coronary artery disease. *N Engl J Med*. 2007;357(5):443–453.
- Shiffman D, Ellis SG, Rowland CM, et al. Identification of four gene variants associated with myocardial infarction. *Am J Hum Genet*. 2005;77(4):596–605.
- Schunkert H, Götz A, Braund P, et al. Repeated replication and a prospective meta-analysis of the association between chromosome 9p21.3 and coronary artery disease. *Circulation*. 2008;117(13):1675–1684.
- Hokanson JE. Lipoprotein lipase gene variants and risk of coronary disease: a quantitative analysis of population-based studies. *Int J Clin Lab Res*. 1997;27(1):24–34.
- Hokanson JE. Functional variants in the lipoprotein lipase gene and risk cardiovascular disease. *Curr Opin Lipidol*. 1999;10(5):393–399.
- Hu Y, Liu W, Huang R, et al. A systematic review and meta-analysis of the relationship between lipoprotein lipase Asn291Ser variant and diseases. *J Lipid Res*. 2006;47(9):1908–1914.
- Wittrup HH, Tybjaerg-Hansen A, Nordestgaard BG. Lipoprotein lipase mutations, plasma lipids and lipoproteins, and risk of ischemic heart disease. A meta-analysis. *Circulation*. 1999;99(22):2901–2907.
- Whitehead A, Bailey AJ, Elbourne D. Combining summaries of binary outcomes with those of continuous outcomes in a meta-analysis. *J Biopharm Stat*. 1999;9(1):1–16.
- Malygina NA, Melent'ev AS, Kostomarova IV, et al. Connection of HindIII-polymorphism in the lipoprotein lipase gene with myocardial infarct and life span in elderly ischemic heart disease patients [in Russian]. *Molekulyarnaya Biologiya (Moscow)*. 2001;35(5):787–791.
- Myllykangas L, Polvikoski T, Sulkava R, et al. Association of lipoprotein lipase Ser447Ter polymorphism with brain infarction: a population-based neuropathological study. *Ann Med*. 2001;33(7):486–492.
- Wittrup HH, Andersen RV, Tybjaerg-Hansen A, et al. Combined analysis of six lipoprotein lipase genetic variants on triglycerides, high-density lipoprotein, and ischemic heart disease: cross-sectional, prospective, and case-control studies from the Copenhagen City Heart Study. *J Clin Endocrinol Metab*. 2006;91(4):1438–1445.

38. Emigh TH. A comparison of tests for Hardy-Weinberg equilibrium. *Biometrics*. 1980;36(40):627–642.
39. Shoemaker J, Painter I, Weir BS. A Bayesian characterization of Hardy-Weinberg disequilibrium. *Genetics*. 1998;149(4):2079–2088.
40. Salanti G, Higgins JP, Trikalinos TA, et al. Bayesian meta-analysis and meta-regression for gene-disease associations and deviations from Hardy-Weinberg equilibrium. *Stat Med*. 2007;26(3):553–567.
41. Higgins JP, Thompson SG, Deeks JJ, et al. Measuring inconsistency in meta-analyses. *BMJ*. 2003;327(7414):557–560.
42. Begg CB, Mazumdar M. Operating characteristics of a rank correlation test for publication bias. *Biometrics*. 1994;50(4):1088–1101.
43. Egger M, Davey SG, Schneider M, et al. Bias in meta-analysis detected by a simple, graphical test. *BMJ*. 1997;315(7109):629–634.
44. Minelli C, Thompson JR, Abrams KR, et al. The choice of a genetic model in the meta-analysis of molecular association studies. *Int J Epidemiol*. 2005;34(6):1319–1328.
45. Stata Corporation. Stata statistical software: release 10. College Station, TX: Stata Corporation; 2007.
46. Abu-Amero KK, Wyngaard CA, Al Boudari OM, et al. Lack of association of lipoprotein lipase gene polymorphisms with coronary artery disease in the Saudi Arab population. *Arch Pathol Lab Med*. 2003;127(5):597–600.
47. Tirawanchai N, Dulyasukdi B, Likidilid A, et al. Polymorphism of the gene encoding lipoprotein lipase in Thai primary hyperlipoproteinemias. *J Med Assoc Thai*. 2000;83(suppl 2):S19–S27.
48. Vohl MC, Lamarche B, Moorjani S, et al. The lipoprotein lipase *HindIII* polymorphism modulates plasma triglyceride levels in visceral obesity. *Arterioscler Thromb Vasc Biol*. 1995;15(5):714–720.
49. Yin R, Wang Y, Chen G, et al. Lipoprotein lipase gene polymorphism at the *PvuII* locus and serum lipid levels in Guangxi Hei Yi Zhuang and Han populations. *Clin Chem Lab Med*. 2006;44(12):1416–1421.
50. Zhang R, Liu Y, Yang LC, et al. Study on lipoprotein lipase gene *Hind III* polymorphism in Chinese type II b hyperlipoproteinemia [in Chinese]. *Zhonghua Yi Xue Yi Chuan Xue Za Zhi*. 2003;20(6):539–541.
51. Zhao SP, Tong QG, Xiao ZJ, et al. The lipoprotein lipase Ser447Ter mutation and risk of stroke in the Chinese. *Clin Chim Acta*. 2003;330(1–2):161–164.
52. Gaudet D, Vohl MC, Julien P, et al. Relative contribution of LDL-receptor and *LPL* gene mutations to angiographically assessed coronary artery disease among French Canadians [abstract]. *Atherosclerosis*. 1997;134(suppl):77.
53. Henriksen FL, Rohold A, Krogh LN, et al. Lipoprotein lipase gene polymorphism and lipoprotein lipase activity in patients with previous acute myocardial infarction or non-insulin dependent diabetes mellitus [abstract]. *Atherosclerosis*. 1997;134(suppl):25.
54. Ko YL, Ko YS, Wu SM, et al. Interaction between obesity and genetic polymorphisms in the apolipoprotein CIII gene and lipoprotein lipase gene on the risk of hypertriglyceridemia in Chinese. *Hum Genet*. 1997;100(3–4):327–333.
55. Saha N, Low PS, Kambh MI. Association of two polymorphisms in the lipoprotein lipase gene with coronary heart disease [abstract]. *Am J Hum Genet*. 1998;61(suppl):A209.
56. Hoffmann MM, Wolfarth B, Schlemmer E, et al. Genetic variations of lipoprotein lipase and hepatic triglyceride lipase and their influence to low density and high density lipoprotein subfractions [abstract]. *Atherosclerosis*. 1999;144(suppl):13.
57. Koay SC, Choong ML, Khaw MC, et al. A study on lipoprotein lipase (*LPL*) variants in case-control samples from three Asian populations [abstract]. *Clin Chem Lab Med*. 1999;37(spec. suppl):S264.
58. Hall S, Talmud PJ, Cook DG, et al. Frequency and allelic association of common variants in the lipoprotein lipase gene in different ethnic groups: The Wandsworth Heart and Stroke Study. *Genet Epidemiol*. 2000;18(3):203–216.
59. Proenza AM, Poissonnet CM, Ozata M, et al. Association of sets of alleles of genes encoding  $\beta$ 3-adrenoreceptor, uncoupling protein 1 and lipoprotein lipase with increased risk of metabolic complications in obesity. *Int J Obes Relat Metab Disord*. 2000;24(1):93–100.
60. Corella D, Guillén M, Portolés O, et al. Gender specific associations of the Trp64Arg mutation in the  $\beta$ 3-adrenergic receptor gene with obesity-related phenotypes in a Mediterranean population: interaction with a common lipoprotein lipase gene variation. *J Intern Med*. 2001;250(4):348–360.
61. Masana L, Febrer G, Cavanna J, et al. Common genetic variants that relate to disorders of lipid transport in Spanish subjects with premature coronary artery disease. *Clin Sci (Lond)*. 2001;100(2):183–190.
62. Humphries SE, Berglund L, Isasi CR, et al. Loci for *CETP*, *LPL*, *LIPC*, and *APOC3* affect plasma lipoprotein size and sub-population distribution in Hispanic and non-Hispanic white subjects: The Columbia University BioMarkers Study. *Nutr Metab Cardiovasc Dis*. 2002;12(4):163–172.
63. Kay A, März W, Hoffmann MM, et al. Coronary artery disease and dyslipidemia within Europe: genetic variants in lipid transport gene loci in German subjects with premature coronary artery disease. *Atheroscler Suppl*. 2002;3(1):27–33.
64. Arnaud L Jr, Gallegos MP, Mariaud RP, et al. Frequency of *PvuII* (*LPL*) genetic polymorphism in patients with arterial coronary disease from Mexican population [abstract]. *Am J Hum Genet*. 2003;73(suppl):369.
65. Milicic D, Sertic J, Skoric B, et al. Genotyping of multilocus risk markers in patients with myocardial infarction [abstract]. *Eur Heart J*. 2003;24(suppl):348.
66. Almeida KA, Strunz CMC, Issa JS, et al. S447X lipoprotein lipase polymorphism in patients with premature coronary artery disease [abstract]. *Atheroscler Suppl*. 2005;6(suppl):26.
67. Feliciello I, Capossela S, Cantile M, et al. Pair-wise detection of eight common DNA polymorphisms of the human lipoprotein lipase gene by PCR-RFLP. Findings of the Olivetti Heart Study. *Nutr Metab Cardiovasc Dis*. 2004;14(4):205–210.
68. Ukkola O, Garenc C, Pérusse L, et al. Genetic variation at the lipoprotein lipase locus and plasma lipoprotein and insulin levels in the Quebec Family Study. *Atherosclerosis*. 2001;158(1):199–206.
69. Sentí M, Bosch M, Aubó C, et al. Relationship of abdominal adiposity and dyslipemic status in women with a common mutation in the lipoprotein lipase gene. The REGICOR Investigators. *Atherosclerosis*. 2000;150(1):135–141.
70. Gerdes C, Gerdes LU, Hansen PS, et al. Polymorphisms in the lipoprotein lipase gene and their associations with plasma lipid concentrations in 40-year-old Danish men. *Circulation*. 1995;92(7):1765–1769.
71. Skoglund-Andersson C, Ehrenborg E, Fisher RM, et al. Influence of common variants in the *CETP*, *LPL*, *HL* and *APO E*

- genes on LDL heterogeneity in healthy, middle-aged men. *Atherosclerosis*. 2003;167(2):311–317.
72. Stocks J, Thorn JA, Galton DJ. Lipoprotein lipase genotypes for a common premature termination codon mutation detected by PCR-mediated site-directed mutagenesis and restriction digestion. *J Lipid Res*. 1992;33(6):853–857.
  73. Talmud PJ, Hall S, Holleran S, et al. *LPL* promoter -93T/G transition influences fasting and postprandial plasma triglycerides response in African-Americans and Hispanics. *J Lipid Res*. 1998;39(6):1189–1196.
  74. Peacock RE, Temple A, Gudnason V, et al. Variation at the lipoprotein lipase and apolipoprotein AI-CIII gene loci are associated with fasting lipid and lipoprotein traits in a population sample from Iceland: interaction between genotype, gender, and smoking status. *Genet Epidemiol*. 1997;14(3):265–282.
  75. Jemaa R, Tuzet S, Portos C, et al. Lipoprotein lipase gene polymorphisms: associations with hypertriglyceridemia and body mass index in obese people. *Int J Obes Relat Metab Disord*. 1995;19(4):270–274.
  76. Klannemark M, Suurinkeroinen L, Orho M, et al. Lipoprotein lipase polymorphism associated with increased plasma triglycerides in healthy subjects [abstract]. *Diabetologia*. 1998;41(suppl):A107.
  77. Larson I, Hoffmann MM, Ordovas JM, et al. The lipoprotein lipase *HindIII* polymorphism: association with total cholesterol and LDL-cholesterol, but not with HDL and triglycerides in 342 females. *Clin Chem*. 1999;45(7):963–968.
  78. McGladdery SH, Pimstone SN, Clee SM, et al. Common mutations in the lipoprotein lipase gene (*LPL*): effects on HDL-cholesterol levels in a Chinese Canadian population. *Atherosclerosis*. 2001;156(2):401–407.
  79. Mero N, Suurinkeroinen L, Syvanne M, et al. Delayed clearance of postprandial large TG-rich particles in normolipidemic carriers of *LPL* Asn291Ser gene variant. *J Lipid Res*. 1999;40(9):1663–1670.
  80. Mitchell RJ, Earl L, Bray P, et al. DNA polymorphisms at the lipoprotein lipase gene and their association with quantitative variation in plasma high-density lipoproteins and triacylglycerides. *Hum Biol*. 1994;66(3):383–397.
  81. Lee J, Tan CS, Chia KS, et al. The lipoprotein lipase S447X polymorphism and plasma lipids: interactions with *APOE* polymorphisms, smoking, and alcohol consumption. *J Lipid Res*. 2004;45(6):1132–1139.
  82. Nicklas BJ, Ferrell RE, Rogus EM, et al. Lipoprotein lipase gene variation is associated with adipose tissue lipoprotein lipase activity, and lipoprotein lipid and glucose concentrations in overweight postmenopausal women. *Hum Genet*. 2000;106(4):420–424.
  83. Dong X, Zhou X, Ha D. DNA polymorphisms of the lipoprotein lipase gene region in Chinese population of Wuhan area [in Chinese]. *Acta Acad Med Hubei*. 1997;18(2):120–122.
  84. Ehrenborg E, Clee SM, Pimstone SN, et al. Ethnic variation and in vivo effects of the -93t→g promoter variant in the lipoprotein lipase gene. *Arterioscler Thromb Vasc Biol*. 1997;17(11):2672–2678.
  85. Friedlander Y, Leitersdorf E, Vecsler R, et al. The contribution of candidate genes to the response of plasma lipids and lipoproteins to dietary challenge. *Atherosclerosis*. 2000;152(1):239–248.
  86. Pang CP, Masarei JRL, Chan LYS, et al. Association between lipoprotein lipase gene polymorphisms and plasma lipids [abstract]. *Clin Chem Lab Med*. 2001;39(spec. suppl):S303.
  87. Humphries SE, Talmud PJ, Cox C, et al. Genetic factors affecting the consistency and magnitude of changes in plasma cholesterol in response to dietary challenge. *QJM*. 1996;89(9):671–680.
  88. Delanef LF, Zouali H, Cohen D, et al. Prevalence of common lipoprotein lipase (*LPL*) gene mutation Ser447Stop is increased while prevalence of Asn291Ser mutation is decreased in centenarians [abstract]. *Atherosclerosis*. 1997;134(suppl):22.
  89. Morrison AC, Ballantyne CM, Bray M, et al. *LPL* polymorphism predicts stroke risk in men. *Genet Epidemiol*. 2002;22(3):233–242.
  90. Xin X, Srinivasan SR, Chen W, et al. Interaction effect of Serine447Stop variant of the lipoprotein lipase gene and C-514T variant of the hepatic lipase gene on serum triglyceride levels in young adults: The Bogalusa Heart Study. *Metabolism*. 2003;52(10):1337–1342.
  91. Nettleton JA, Steffen LM, Ballantyne CM, et al. Associations between HDL-cholesterol and polymorphisms in hepatic lipase and lipoprotein lipase genes are modified by dietary fat intake in African American and White adults. *Atherosclerosis*. 2007;194(2):e131–e140.
  92. Boer JM, Kuivenhoven JA, Feskens EJ, et al. Physical activity modulates the effect of a lipoprotein lipase mutation (D9N) on plasma lipids and lipoproteins. *Clin Genet*. 1999;56(2):158–163.
  93. Hegele RA, Evans AJ, Tu L, et al. A gene-gender interaction affecting plasma lipoproteins in a genetic isolate. *Arterioscler Thromb*. 1994;14(5):671–678.
  94. Almeida KA, Schreiber R, Amâncio RF, et al. Metabolism of chylomicron-like emulsions in carriers of the S447X lipoprotein lipase polymorphism. *Clin Chim Acta*. 2003;335(1–2):157–163.
  95. Arai H, Yamamoto A, Matsuzawa Y, et al. Polymorphisms in four genes related to triglyceride and HDL-cholesterol levels in the general Japanese population in 2000. *J Atheroscler Thromb*. 2005;12(5):240–250.
  96. Arai H, Yamamoto A, Matsuzawa Y, et al. Serum lipid survey and its recent trend in the general Japanese population in 2000. *J Atheroscler Thromb*. 2005;12(2):98–106.
  97. Anderson JL, King GJ, Bair TL, et al. Association of lipoprotein lipase gene polymorphisms with coronary artery disease. *J Am Coll Cardiol*. 1999;33(4):1013–1020.
  98. Arai T, Tsukada T, Okubo M, et al. Ser477Stop mutation of the lipoprotein lipase gene occurs at a higher frequency in Japanese subjects with normal triglyceride levels than in hypertriglyceridemic patients. *Atherosclerosis*. 1999;147(2):417–420.
  99. Arca M, Campagna F, Montali A, et al. The common mutations in the lipoprotein lipase gene in Italy: effects on plasma lipids and angiographically assessed coronary atherosclerosis. *Clin Genet*. 2000;58(5):369–374.
  100. Baroni MG, Berni A, Romeo S, et al. Genetic study of common variants at the *Apo E*, *Apo AI*, *Apo CIII*, *Apo B*, lipoprotein lipase (*LPL*) and hepatic lipase (*LIPC*) genes and coronary artery disease (CAD): variation in *LIPC* gene associated with clinical outcomes in patients with established CAD [electronic article]. *BMC Med Genet*. 2003;4:8.
  101. Chamberlain JC, Thorn JA, Oka K, et al. DNA polymorphisms at the lipoprotein lipase gene: associations in normal and hypertriglyceridaemic subjects. *Atherosclerosis*. 1989;79(1):85–91.
  102. Duman BS, Türkoğlu C, Akpınar B, et al. Lipoprotein lipase gene polymorphism and lipid profile in coronary artery disease. *Arch Pathol Lab Med*. 2004;128(8):869–874.
  103. Eiriksdottir G, Bergmann O, Bolla MK, et al. Effect of the Asp9 to Asn polymorphism in lipoprotein lipase on plasma

- lipid levels and the risk of developing MI in the homogenous Icelandic population [abstract]. *Atherosclerosis*. 1999;144 (suppl):140–141.
104. Feng X, Zhou X, Liu F. The association of *Hind III*-S447x haplotype in the lipoprotein lipase gene with coronary heart disease [in Chinese]. *Zhonghua Xin Xue Guan Bing Za Zhi*. 2003;31(2):96–100.
  105. Ferencak G, Pasalić D, Grsković B, et al. Lipoprotein lipase gene polymorphisms in Croatian patients with coronary artery disease. *Clin Chem Lab Med*. 2003;41(4): 541–546.
  106. Fisher RM, Mailly F, Peacock RE, et al. Interaction of the lipoprotein lipase asparagine 291 → serine mutation with body mass index determines elevated plasma triacylglycerol concentrations: a study in hyperlipidemic subjects, myocardial infarction survivors, and healthy adults. *J Lipid Res*. 1995;36(10):2104–2112.
  107. Gagne SE, Larson MG, Pimstone SN, et al. A common truncation variant of lipoprotein lipase (Ser447X) confers protection against coronary heart disease: The Framingham Offspring Study. *Clin Genet*. 1999;55(6):450–454.
  108. Glisic S, Stankovic S, Duric T, et al. Association of lipoprotein lipase gene Asn291Ser DNA polymorphism with plasma lipid levels and blood pressure levels in healthy population of Serbia. *Jugoslovenska Med Biohemija*. 2003; 22(3):237–242.
  109. Goodarzi MO, Guo XQ, Taylor KD, et al. Determination and use of haplotypes: ethnic comparison and association of the lipoprotein lipase gene and coronary artery disease in Mexican-Americans. *Genet Med*. 2003;5(4):322–327.
  110. Hadjadj S, Gallois Y, Simard G, et al. Lack of relationship in long-term type 1 diabetic patients between diabetic nephropathy and polymorphisms in apolipoprotein epsilon, lipoprotein lipase and cholesteryl ester transfer protein. *Nephrol Dial Transplant*. 2000;15(12):1971–1976.
  111. Holmer SR, Hengstenberg C, Mayer B, et al. Lipoprotein lipase gene polymorphism, cholesterol subfractions and myocardial infarction in large samples of the general population. *Cardiovasc Res*. 2000;47(4):806–812.
  112. Isbir T, Yilmaz H, Agachan B, et al. Cholesterol ester transfer protein, apolipoprotein E and lipoprotein lipase genotypes in patients with coronary artery disease in the Turkish population. *Clin Genet*. 2003;64(3):228–234.
  113. Izar MC, Helfenstein T, Relvas WG, et al. The D9N polymorphism of lipoprotein lipase gene is a marker for myocardial infarction in diabetics [abstract]. *J Am Coll Cardiol*. 2005;45(suppl):416A–417A.
  114. Jemaar R, Fumeron F, Poirier O, et al. Lipoprotein lipase gene polymorphisms: associations with myocardial infarction and lipoprotein levels, the ECTIM study. *J Lipid Res*. 1995; 36(10):2141–2146.
  115. Jukema JW, van Boven AJ, Groenemeijer B, et al. The Asp9 Asn mutation in the lipoprotein lipase gene is associated with increased progression of coronary atherosclerosis. *Circulation*. 1996;94(8):1913–1918.
  116. Kauppinen-Makelin R, Jarvinen P, Kontula K, et al. Genetic polymorphism of apolipoprotein B, apolipoprotein E, and lipoprotein lipase, and serum lipoprotein levels in survivors of myocardial infarction. *Nutr Metab Cardiovasc Dis*. 1993; 3:118–127.
  117. Keavney B, Palmer A, Parish S, et al. Lipid-related genes and myocardial infarction in 4685 cases and 3460 controls: discrepancies between genotype, blood lipid concentrations, and coronary disease risk. *Int J Epidemiol*. 2004;33(5): 1002–1013.
  118. Lee WJ, Sheu WH, Jeng CY, et al. Associations between lipoprotein lipase gene polymorphisms and insulin resistance in coronary heart disease [in Chinese]. *Zhonghua Yi Xue Za Zhi (Taipei)*. 2000;63(7):563–572.
  119. Mattu RK, Needham EWA, Morgan R, et al. DNA variants at the *LPL* gene locus associate with angiographically defined severity of atherosclerosis and serum lipoprotein levels in a Welsh population. *Arterioscler Thromb*. 1994;14(7): 1090–1097.
  120. Minnich A, Baloukas J, Roederer G, et al. Lipoprotein lipase gene mutations in coronary artery disease. *Can J Cardiol*. 1998;14(5):711–716.
  121. Moennig G, Wiebusch H, Enbergs A, et al. Detection of missense mutations in the genes for lipoprotein lipase and hepatic triglyceride lipase in patients with dyslipidemia undergoing coronary angiography. *Atherosclerosis*. 2000;149(2): 395–401.
  122. Mustafina OE, Shagisultanova EI, Tuktarova IA, et al. Connection of *HindIII*-polymorphism of the lipoprotein lipase gene with risk of developing myocardial infarct [in Russian]. *Mol Biologiya (Moscow)*. 2001;35(3): 401–403.
  123. Peacock RE, Hamsten A, Nilsson-Ehle P, et al. Associations between lipoprotein lipase gene polymorphisms and plasma correlations of lipids, lipoproteins and lipase activities in young myocardial infarction survivors and age-matched healthy individuals from Sweden. *Atherosclerosis*. 1992; 97(2–3):171–185.
  124. Qian W, Wang Q, Zhu T. Initial study on the association of lipoprotein lipase (*LPL*) gene polymorphisms with coronary heart disease (CHD) [in Chinese]. *Zhonghua Xin Xue Guan Bing Za Zhi*. 1998;26(4):309–312.
  125. Qin Q, Zhao B, Geng J, et al. The association of the lipoprotein lipase S447X and cholesteryl ester transfer protein *TaqIB* polymorphism with coronary heart disease [in Chinese]. *Zhonghua Xin Xue Guan Bing Za Zhi*. 2004;32(6): 522–525.
  126. Raslová K, Smolková B, Vohnout B, et al. Risk factors for atherosclerosis in survivors of myocardial infarction and their spouses: comparison to controls without personal and family history of atherosclerosis. *Metabolism*. 2001;50(1): 24–29.
  127. Régis-Bailly A, Visvikis S, Steinmetz J, et al. Frequencies of five genetic polymorphisms in coronarographed patients and effects on lipid levels in a supposedly healthy population. *Clin Genet*. 1996;50(5):339–347.
  128. Sawano M, Watanabe Y, Ohmura H, et al. Potentially protective effects of the Ser447-Ter mutation of the lipoprotein lipase gene against the development of coronary artery disease in Japanese subjects via a beneficial lipid profile. *Jpn Circ J*. 2001;65(4):310–314.
  129. Schneider J, Kreuzer J, Hamann A, et al. The proline 12 alanine substitution in the peroxisome proliferator-activated receptor- $\gamma$ 2 gene is associated with lower lipoprotein lipase activity in vivo. *Diabetes*. 2002;51(3):867–870.
  130. Schulte H, Wiebusch H, Rust S, et al. Frequent mutations in the lipoprotein lipase (*LPL*) gene affect plasma HDL-cholesterol concentrations [abstract]. *Am J Hum Genet*. 1996; 59(suppl):A189.
  131. Stepanov VA, Puzyrev VP, Karpov RS, et al. Genetic markers in coronary artery disease in a Russian population. *Hum Biol*. 1998;70(1):47–57.
  132. Thorn JA, Chamberlain JC, Alcolado JC, et al. Lipoprotein and hepatic lipase gene variants in coronary atherosclerosis. *Atherosclerosis*. 1990;85(1):55–60.

133. Tobin MD, Braund PS, Burton PR, et al. Genotypes and haplotypes predisposing to myocardial infarction: a multilocus case-control study. *Eur Heart J*. 2004;25(6):459–467.
134. van Bockxmeer FM, Liu Q, Mamotte C, et al. Lipoprotein lipase D9N, N291S and S447X polymorphisms: their influence on premature coronary heart disease and plasma lipids. *Atherosclerosis*. 2001;157(1):123–129.
135. Wang XL, McCredie RM, Wilcken DEL. Common DNA polymorphisms at the lipoprotein lipase gene: association with severity of coronary artery disease and diabetes. *Circulation*. 1996;93(7):1339–1345.
136. Witttrup HH, Tybjaerg-Hansen A, Abildgaard S, et al. A common substitution (Asn291Ser) in lipoprotein lipase is associated with increased risk of ischemic heart disease. *J Clin Invest*. 1997;99(7):1606–1613.
137. Yang WS, Nevin DN, Iwasaki L, et al. Regulatory mutations in the human lipoprotein lipase gene in patients with familial combined hyperlipidemia and coronary artery disease. *J Lipid Res*. 1996;37(12):2627–2637.
138. Yang Y, Ruiz-Narvaez E, Niu T, et al. Genetic variants of the lipoprotein lipase gene and myocardial infarction in the Central Valley of Costa Rica. *J Lipid Res*. 2004;45(11):2106–2109.
139. Zhang Q, Cavanna J, Winkelman BR, et al. Common genetic variants of lipoprotein lipase that relate to lipid transport in patients with premature coronary artery disease. *Clin Genet*. 1995;48(6):293–298.
140. Reuterwall C, Hallqvist J, Ahlbom A, et al. Higher relative, but lower absolute risks of myocardial infarction in women than in men: analysis of some major risk factors in the SHEEP Study. The SHEEP Study Group. *J Intern Med*. 1999;246(2):161–174.
141. Ioannidis JP, Boffetta P, Little J, et al. Assessment of cumulative evidence on genetic associations: interim guidelines. *Int J Epidemiol*. 2008;37(1):120–132.
142. Davey Smith G, Ebrahim S. ‘Mendelian randomization’: can genetic epidemiology contribute to understanding environmental determinants of disease? *Int J Epidemiol*. 2003;32(1):1–22.
143. Sarwar N, Danesh J, Eiriksdottir G, et al. Triglycerides and the risk of coronary heart disease: 10,158 incident cases among 262,525 participants in 29 Western prospective studies. *Circulation*. 2007;115(4):450–458.
144. Colhoun HM, McKeigue PM, Davey SG. Problems of reporting genetic associations with complex outcomes. *Lancet*. 2003;361(9360):865–872.
145. Ioannidis JP, Trikalinos TA, Ntzani EE, et al. Genetic associations in large versus small studies: an empirical assessment. *Lancet*. 2003;361(9357):567–571.
146. Keavney B, McKenzie C, Parish S, et al. Large-scale test of hypothesised associations between the angiotensin-converting-enzyme insertion/deletion polymorphism and myocardial infarction in about 5000 cases and 6000 controls. International Studies of Infarct Survival (ISIS) Collaborators. *Lancet*. 2000;355(9202):434–442.
147. Mead JR, Irvine SA, Ramji DP. Lipoprotein lipase: structure, function, regulation, and role in disease. *J Mol Med*. 2002;80(12):753–769.
148. Razzaghi H, Day BW, McClure RJ, et al. Structure-function analysis of D9N and N291S mutations in human lipoprotein lipase using molecular modelling. *J Mol Graph Model*. 2001;19(6):487–494.
149. Nierman MC, Rip J, Kuivenhoven JA, et al. Carriers of the frequent lipoprotein lipase S447X variant exhibit enhanced postprandial apoprotein B-48 clearance. *Metabolism*. 2005;54(11):1499–1503.
150. Nierman MC, Prinsen BH, Rip J, et al. Enhanced conversion of triglyceride-rich lipoproteins and increased low-density lipoprotein removal in LPLS447X carriers. *Arterioscler Thromb Vasc Biol*. 2005;25(11):2410–2415.
151. Nierman MC, Rip J, Kuivenhoven JA, et al. Enhanced apoB48 metabolism in lipoprotein lipase X447 homozygotes. *Atherosclerosis*. 2007;194(2):446–451.

---

## APPENDIX

### Search Strategy Used in the Updated Meta-Analysis

The MEDLINE search strategy using PubMed for assessing the association between lipoprotein lipase (*LPL*) polymorphisms and coronary heart disease was the following: (lipoprotein lipase\* OR lipoprotein lipase[MeSH] OR LPL\* OR lipid\*) AND (gene\* OR polymorphi\* OR genetic\* OR mutation\* OR allel\* OR genotyp\*) AND (coronary stenosis\* OR coronary stenosis[MeSH] OR coronary artery disease\* OR coronary artery disease[MeSH] OR CAD\* OR coronary arteriosclerosis\* OR coronary arteriosclerosis[MeSH] OR myocardial infarction\* OR myocardial infarction[MeSH] OR MI OR coronary heart disease\* OR coronary heart disease[MeSH] OR ischemic heart disease\* OR ischemic heart disease[MeSH] OR myocardial ischemia\* OR myocardial ischemia[MeSH]).

The search strategy for assessing the associations between *LPL* polymorphisms and measures of lipid metabolism was the following: (lipoprotein lipase\* OR lipoprotein lipase[MeSH] OR LPL\* OR lipid\*) AND (gene\* OR polymorphi\* OR genetic\* OR mutation\* OR allel\* OR genotyp\*) AND (triglyceride\* OR triglycerides[MeSH] OR TG OR high density lipoprotein OR high density lipoprotein[MeSH] OR HDL OR intermediate density lipoprotein OR intermediate density lipoprotein[MeSH] OR IDL OR low density lipoprotein OR low density lipoprotein[MeSH] OR LDL OR very low density lipoprotein OR very low density lipoprotein[MeSH] OR VLDL OR cholesterol OR cholesterol[MeSH] OR hyperlipidemia OR hyperlipidemia[MeSH] OR hypertriglyceridaemia OR hypertriglyceridaemia[MeSH]).

Searches of other databases translated these strategies term by term, using equivalent thesaurus terms as appropriate.