

# Disaster Imagery

Glenn Bethel

USDA Remote Sensing Advisor

December 2008

# USDA ESF Leadership

- **ESF- 4 Fire:**
  - Dale Dague (FS)
- **ESF-11, Agriculture:**
  - David Urso (APHIS)
- **ESF-14 Long Term Recovery:**
  - Jerry Epting (FSA)

# USDA Leadership

- Sheryl Maddux: Director of USDA's Homeland Security Office.
- James Redington: Director, USDA Director of Emergency Programs.



# Time Series of Mississippi Flooding June 2008 MODIS Imagery from MODIS Rapid Response System

Glenn Bethel

USDA Remote Sensing Advisor

[glenn.bethel@usda.gov](mailto:glenn.bethel@usda.gov)

<http://rapidfire.sci.gsfc.nasa.gov/subsets/?subset=USA3.2008080>



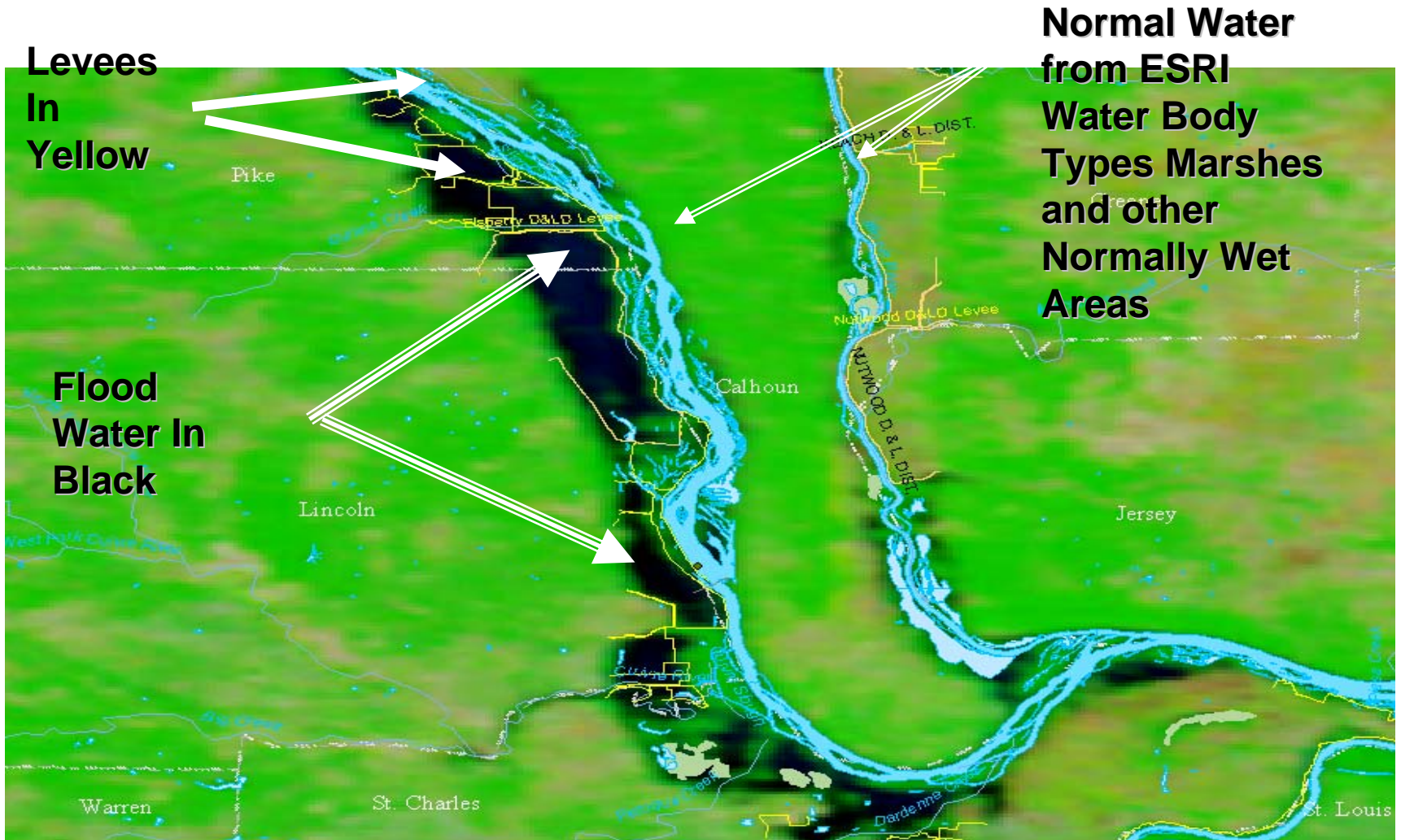
# ESRI Water Body Types Used to Display Normal Water and Swaps...

Levee Data from Army Corps of Engineers



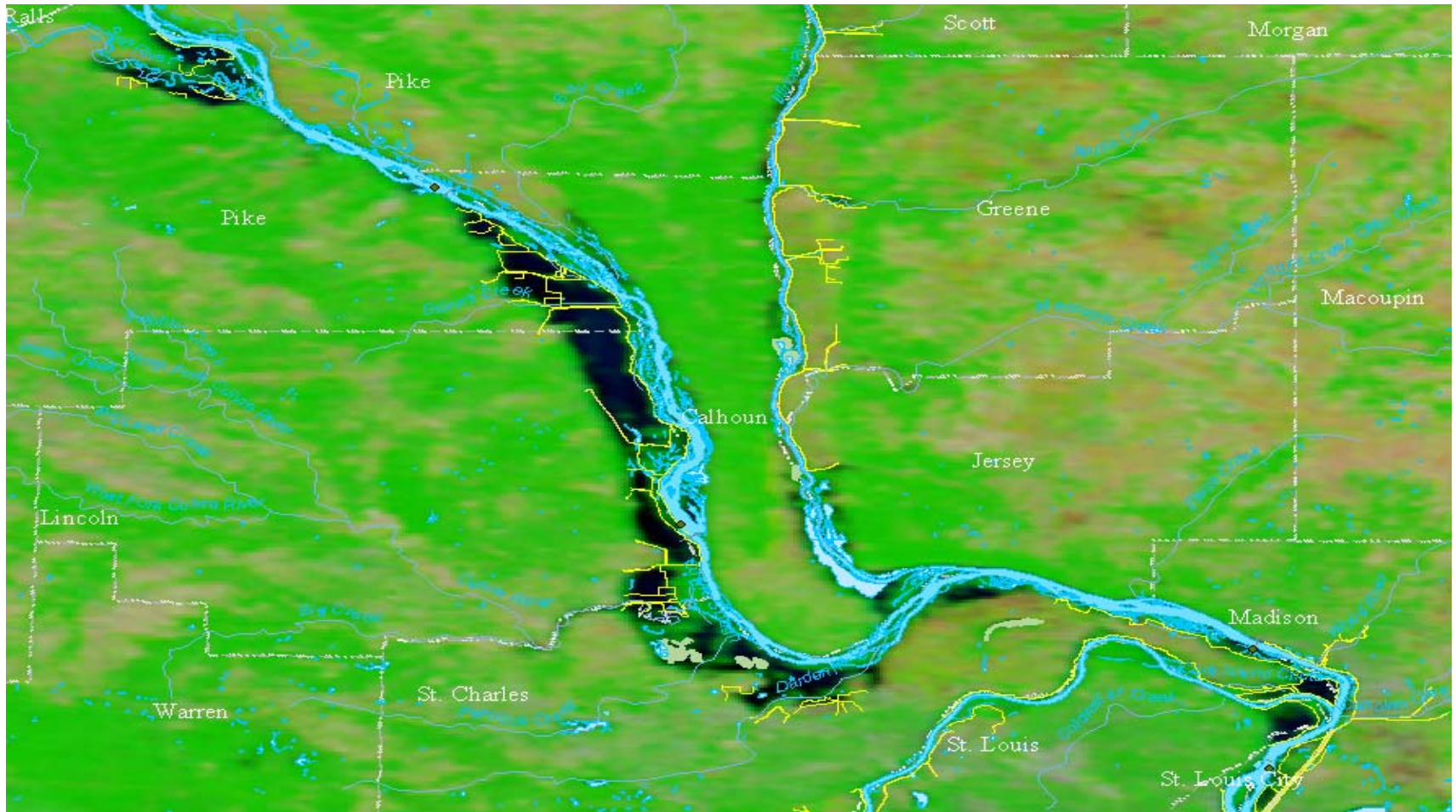
- Water Body Types
- Lake or Pond
  - Swamp or Marsh
  - Stream or River
  - Inundation Area
  - Artificial Basins

# About the Slides



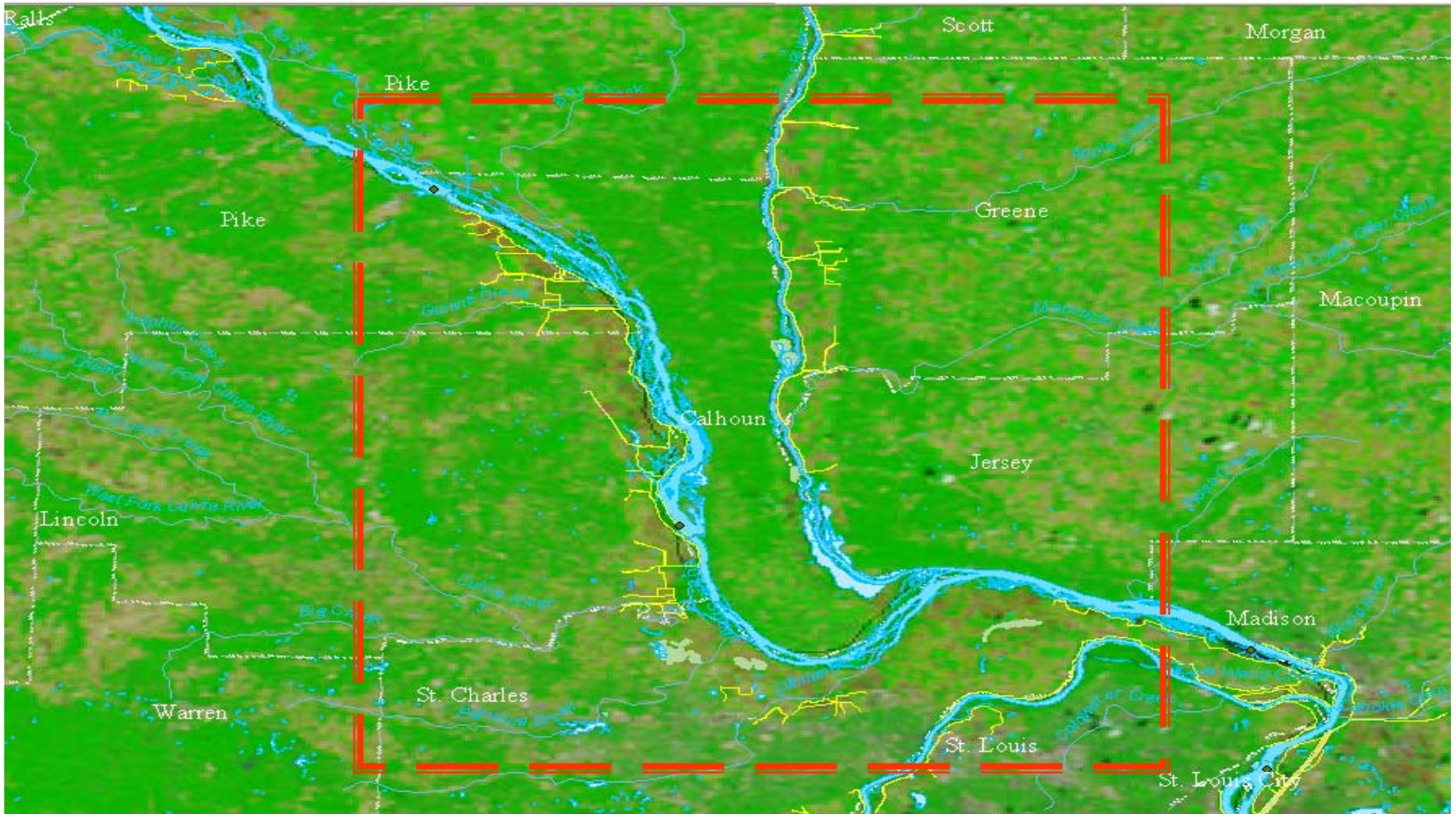


# June 21, 2008



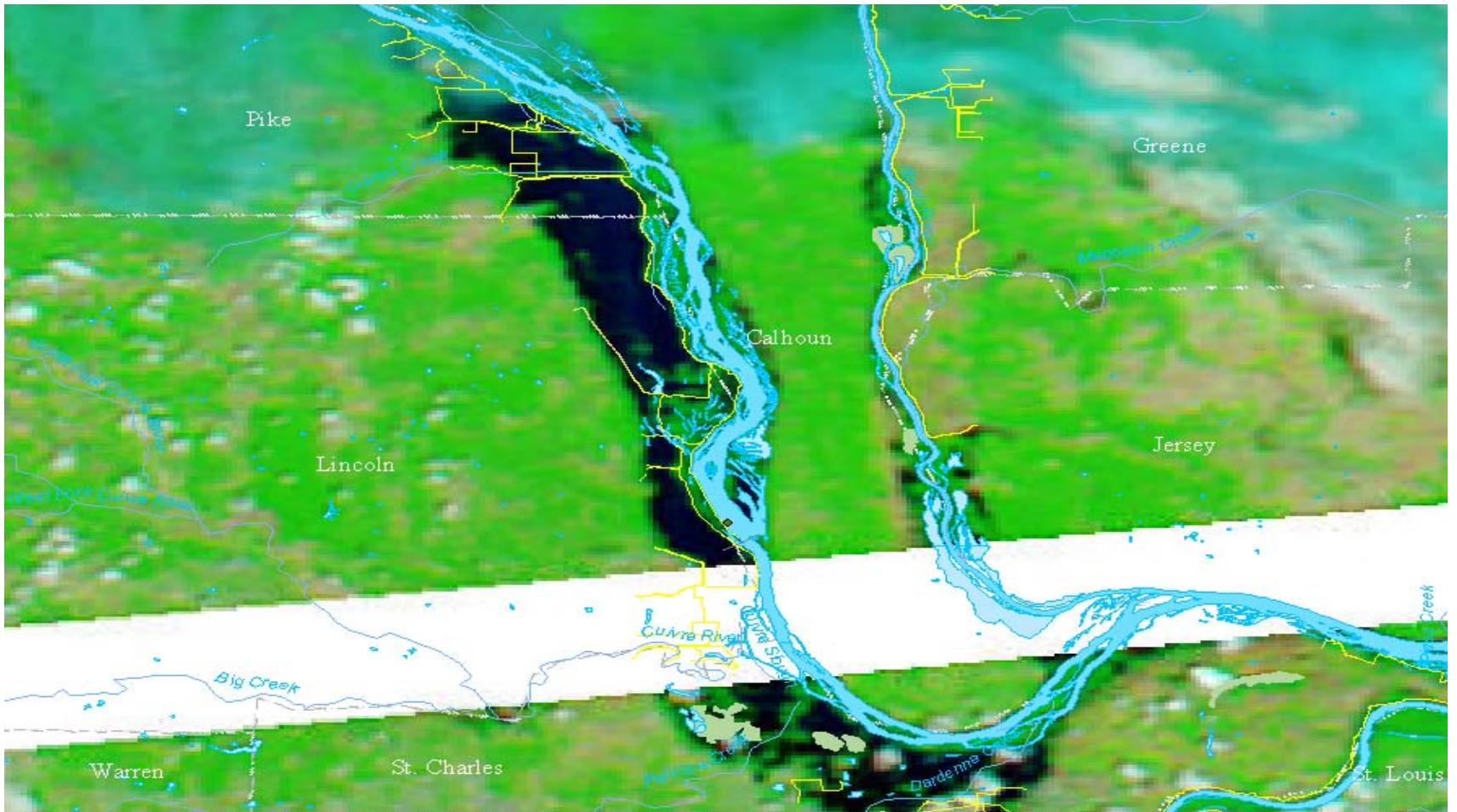


# May 21, 2007





# June 25

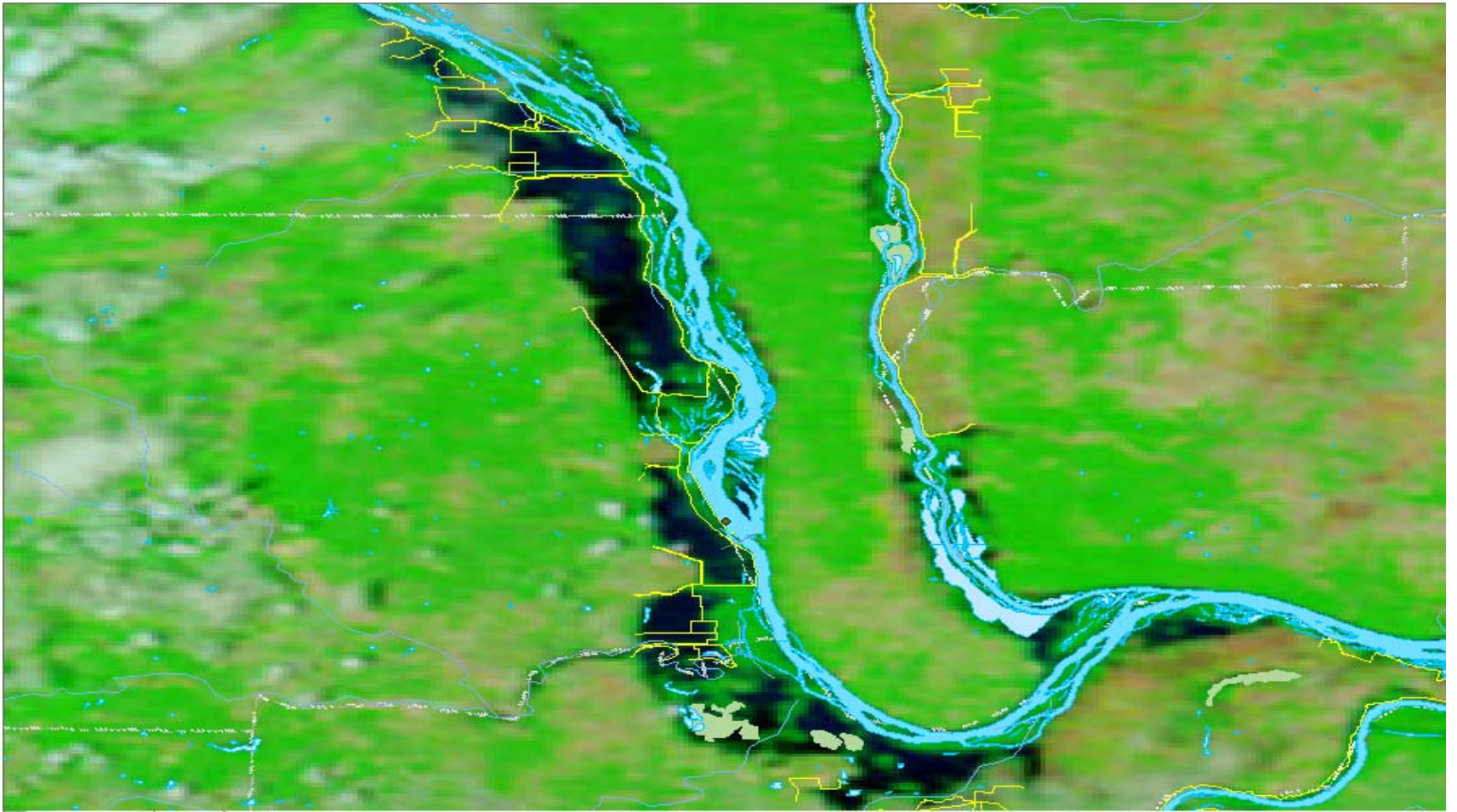


# June 23, 2008

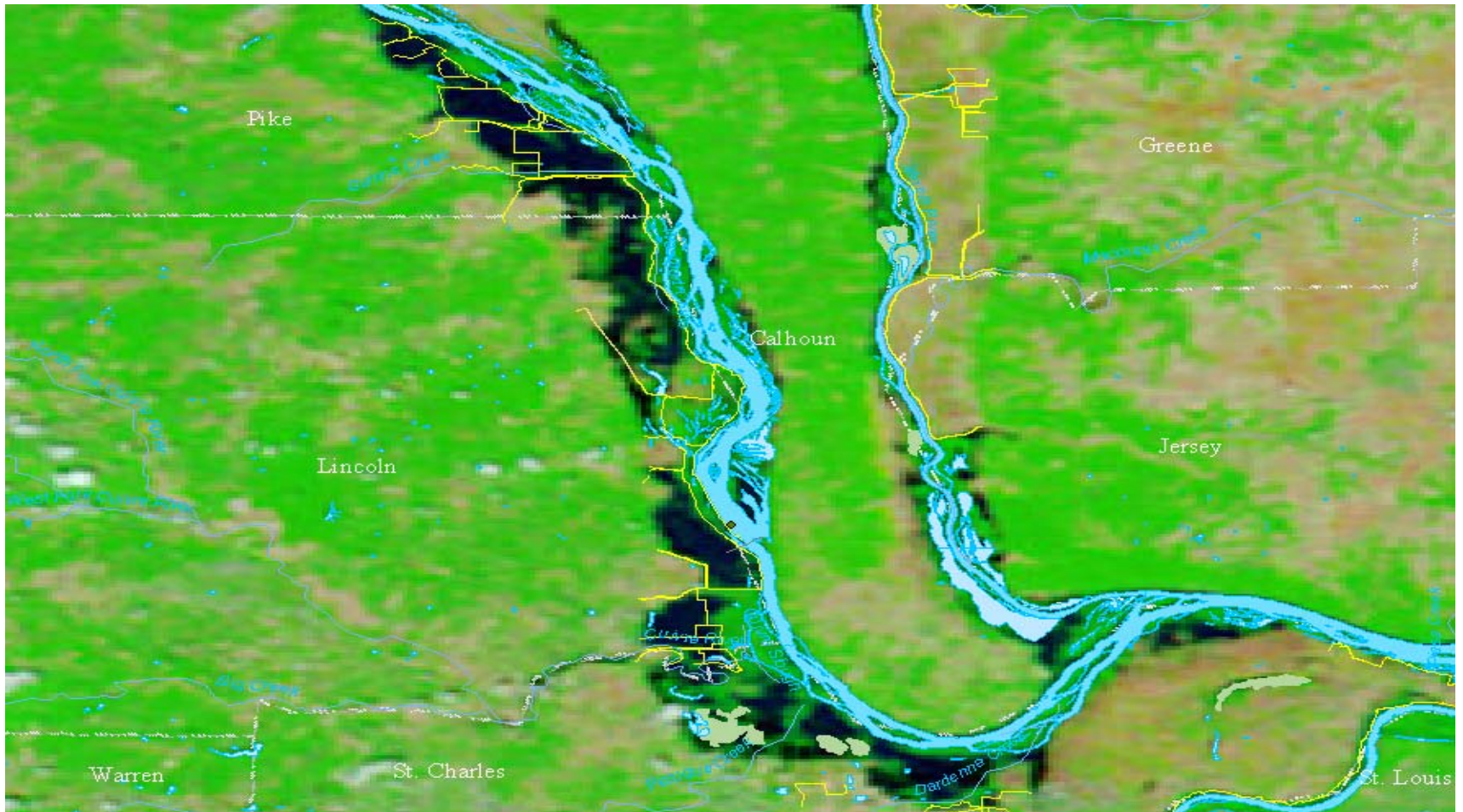




June 21, 2008



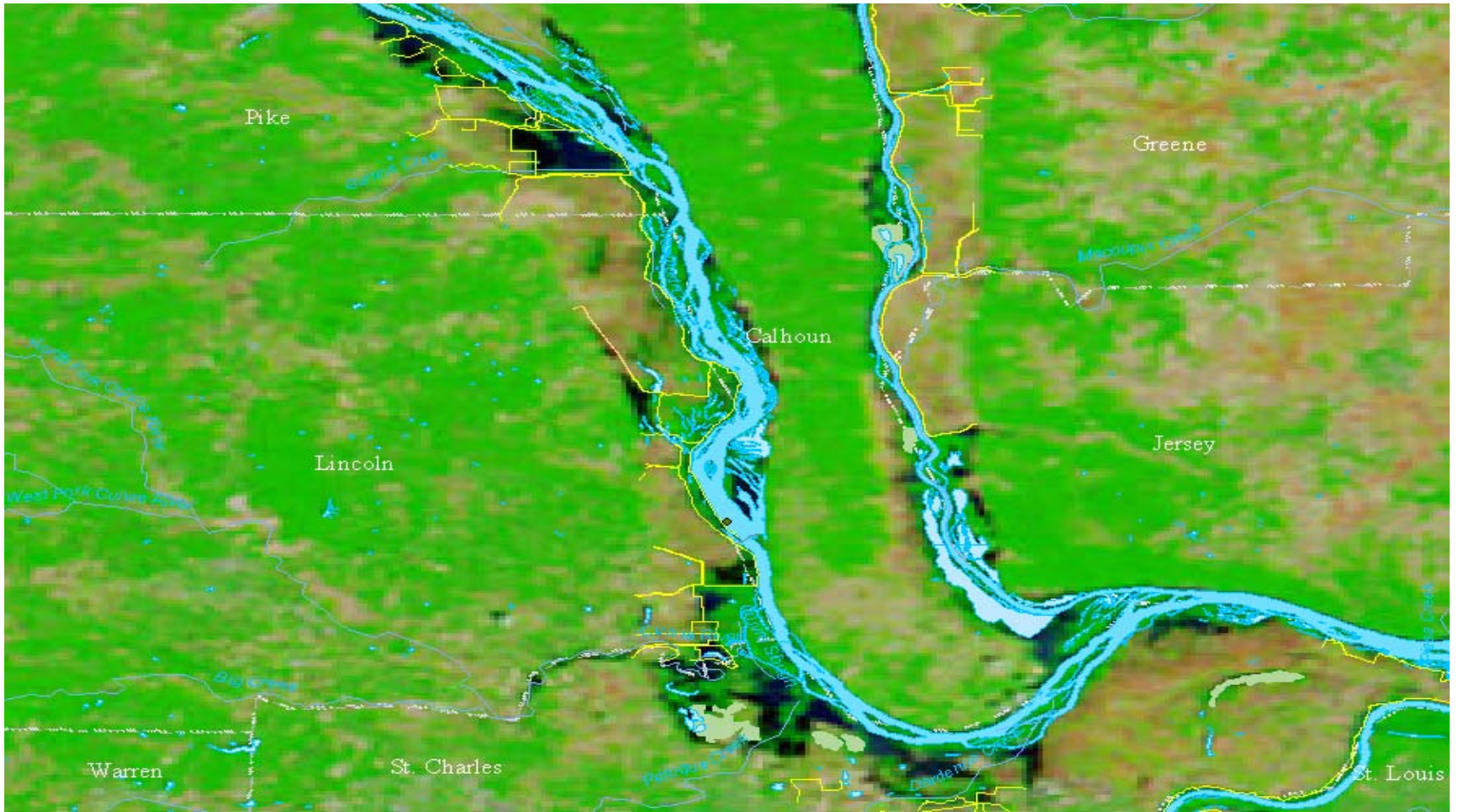
# June 19, 2008



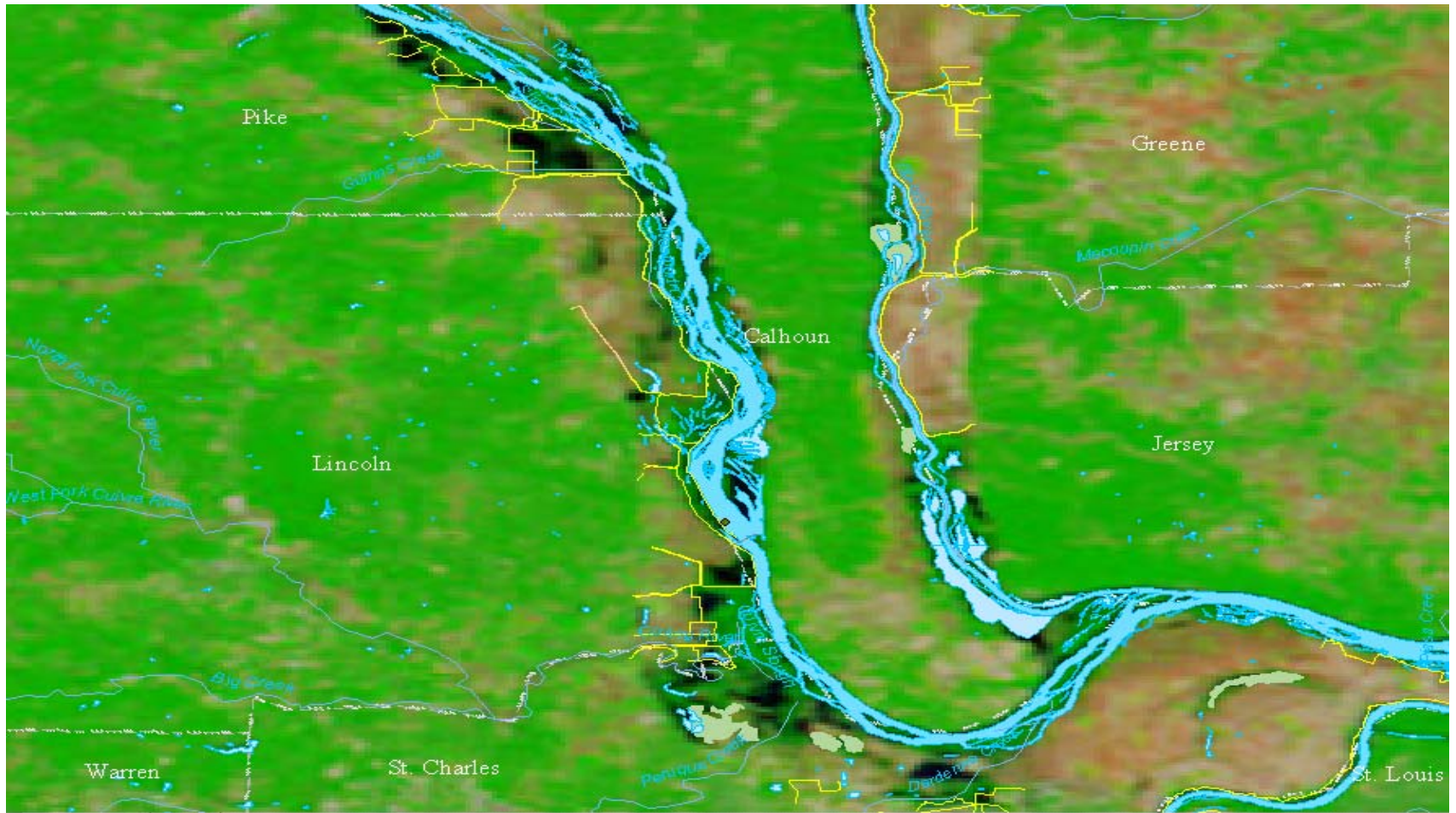
MODIS Rapid Response Team



# June 17



# May 21, 2008

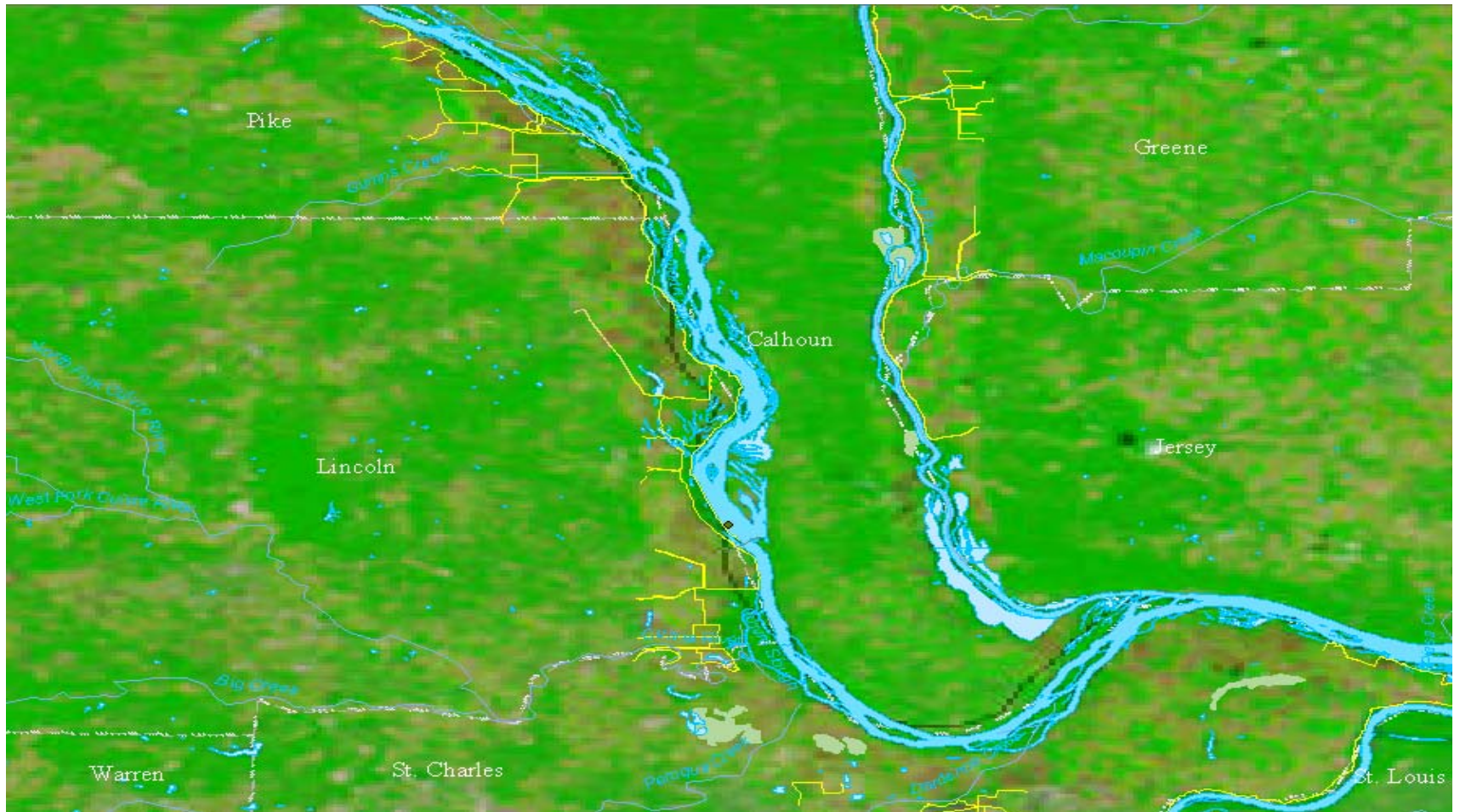




# March 20, 2008

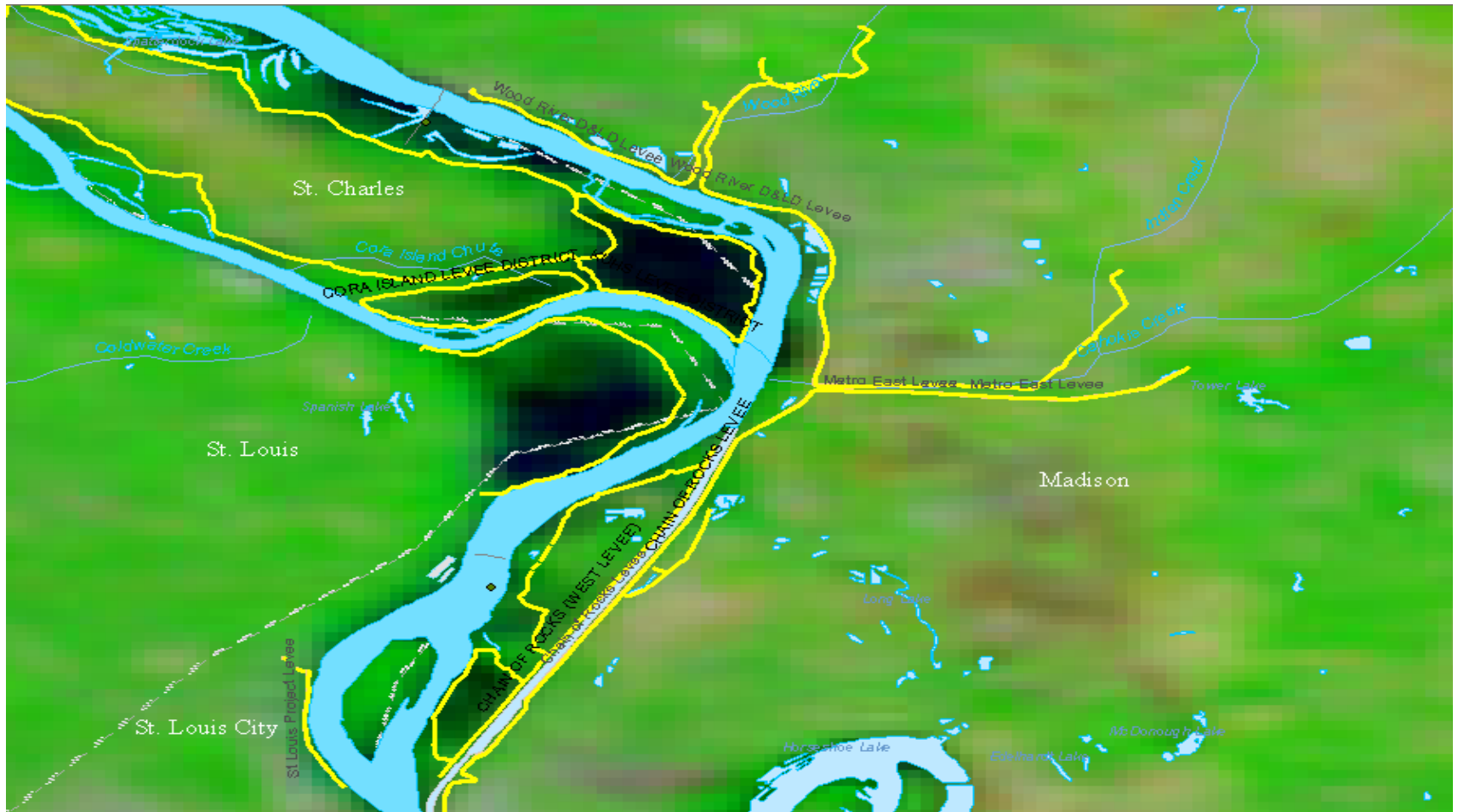


# June 12, 2007

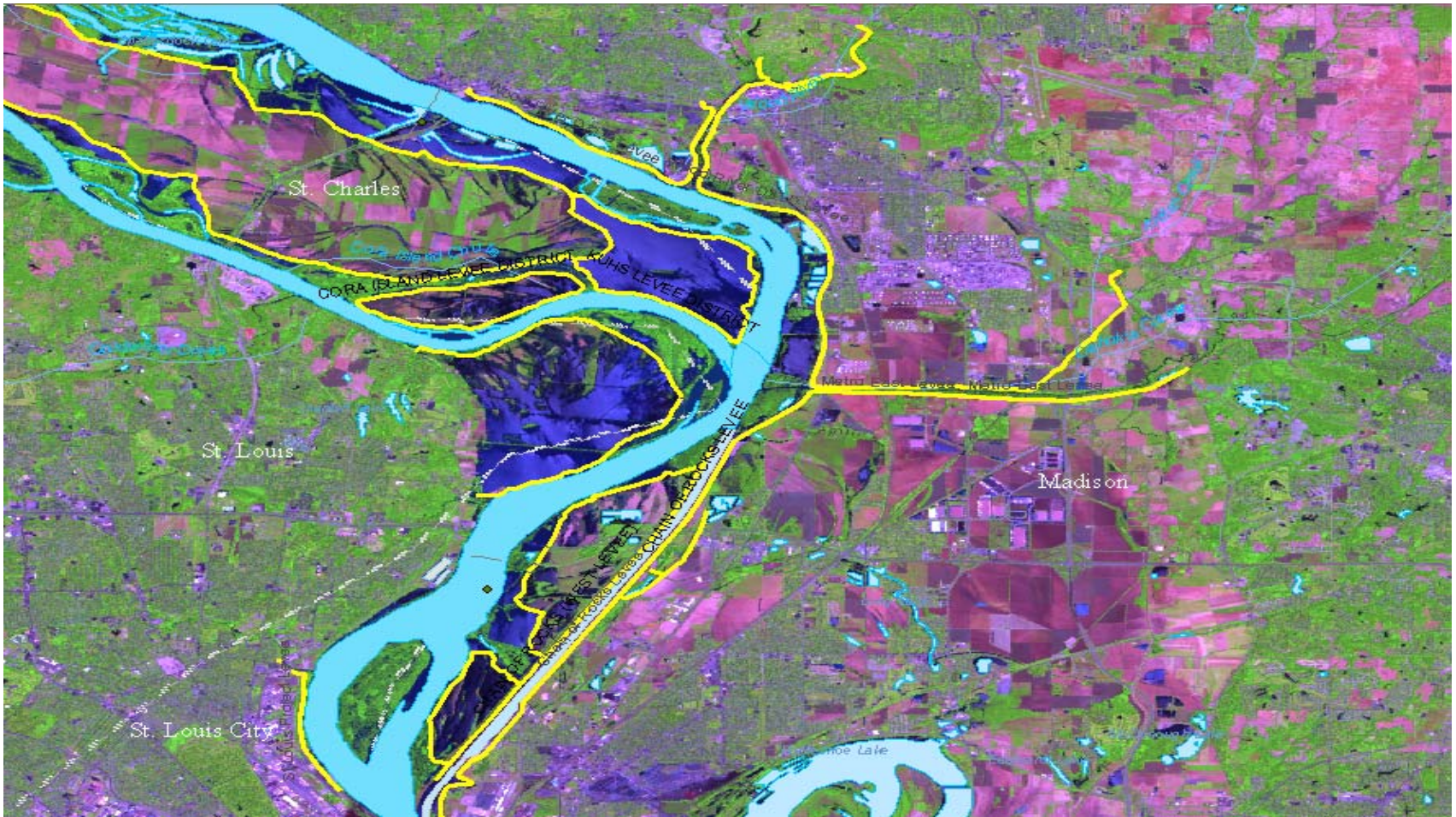




# June 23, 2008 MODIS

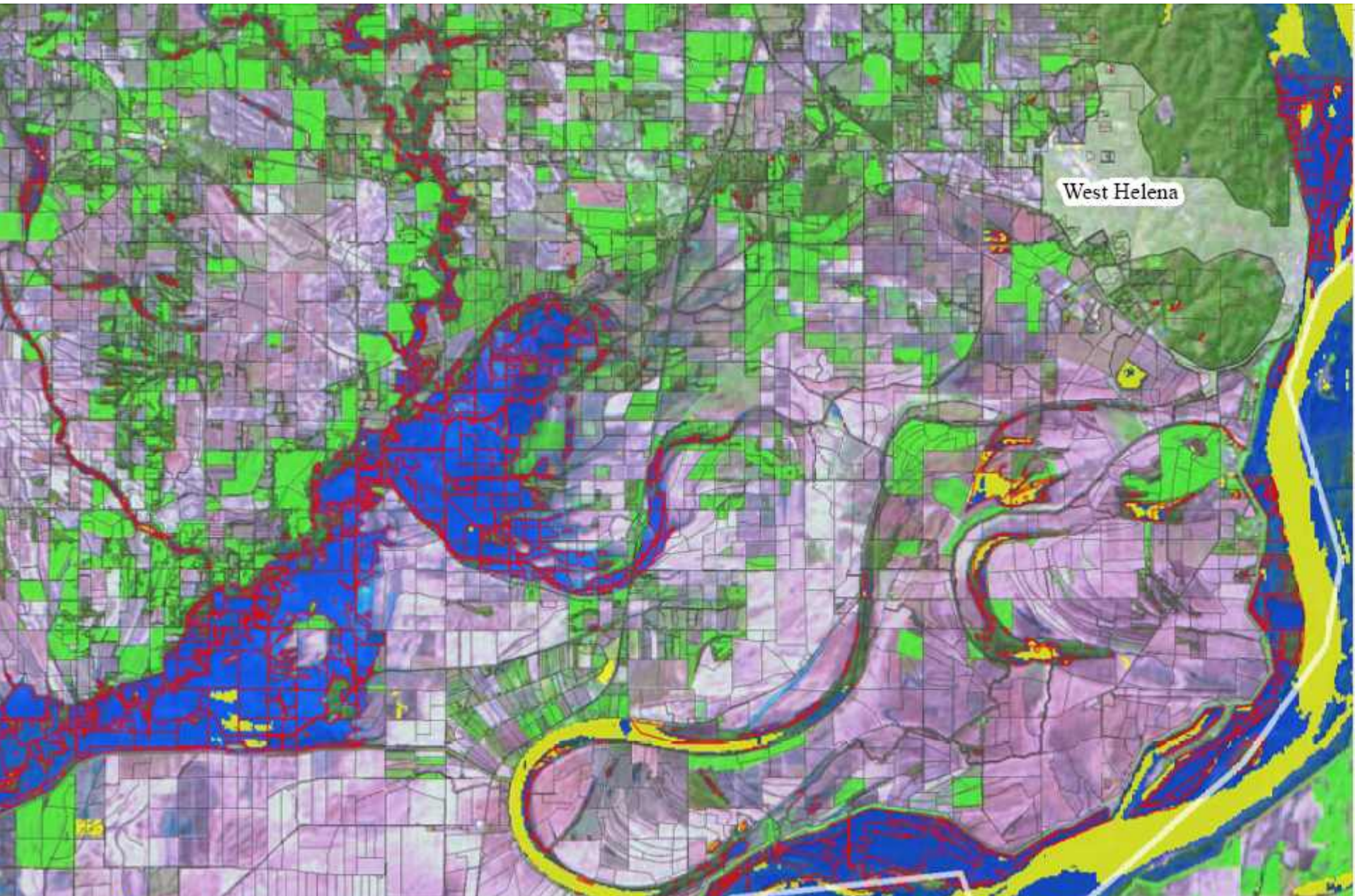


# June 23, 2008 SPOT





# Phillips AR, Flooded CLUs in Red



# June 2008 Flooding: HDDS Imagery

WorldView\_PostEvent\_Cover



IKONOS\_PostEvent\_Cover



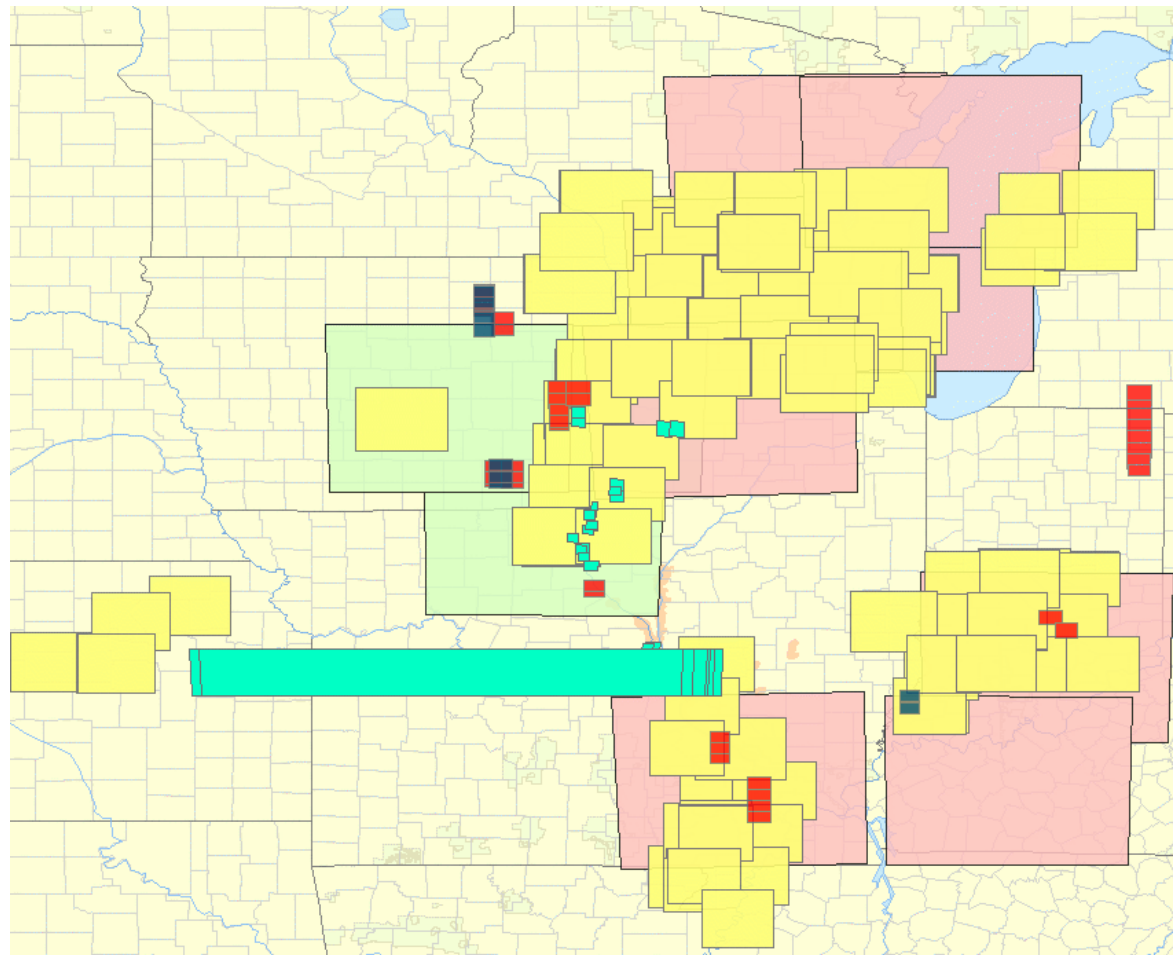
SPOT\_PostEvent\_Cover



Landsat7\_PostEvent\_Cover



Landsat5\_PostEvent\_Cover





# July Fires: Imagery in HDDS

CA Active Perimeters (July 7)



IKONOS\_PostEvent\_Cover



WorldView\_PostEvent\_Cover



SPOT\_PostEvent\_Cover



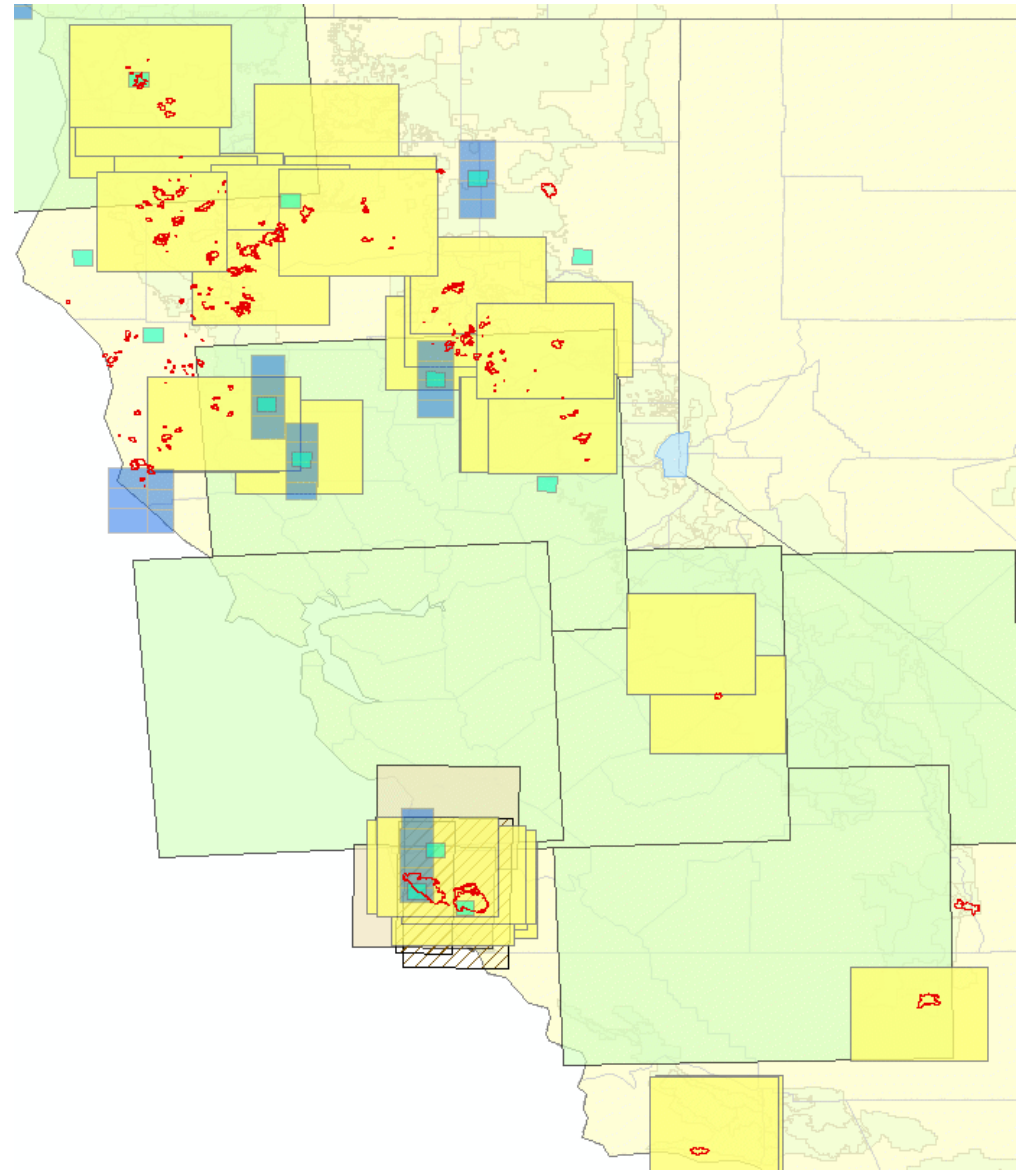
EO1\_PostEvent\_Cover



ASTER\_PostEvent\_Cover



Landsat5\_Post\_Event\_Cover



# Dolly

PostEvent\_IKONOS\_Cover



WorldView\_PostEvent\_Cover



SPOT\_PostEvent\_Cover



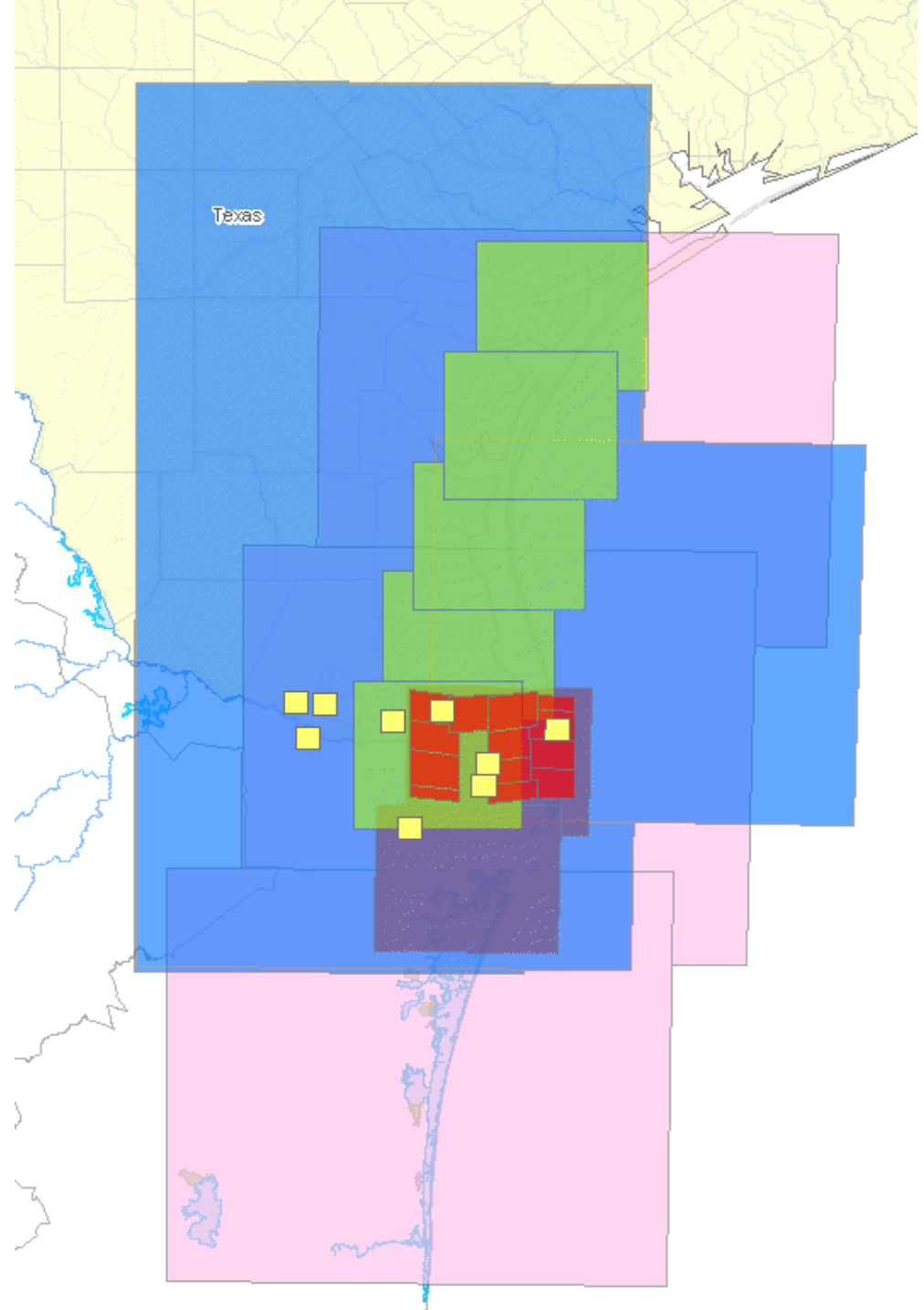
ASTER\_PostEvent\_Cover



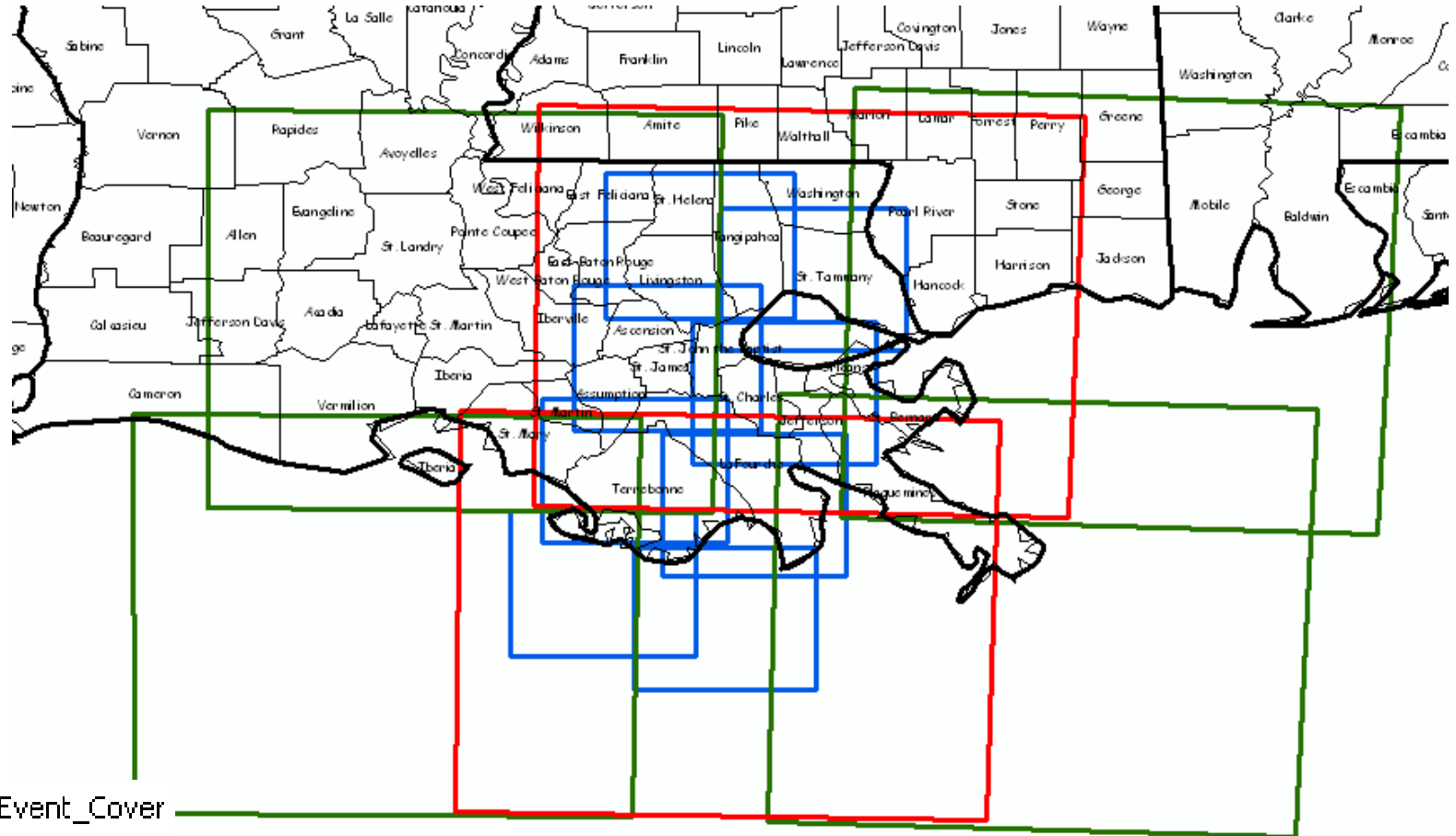
Radarsat\_PostEvent\_Cover



Landsat5\_PostEvent\_Cover



# Post Event Gustav

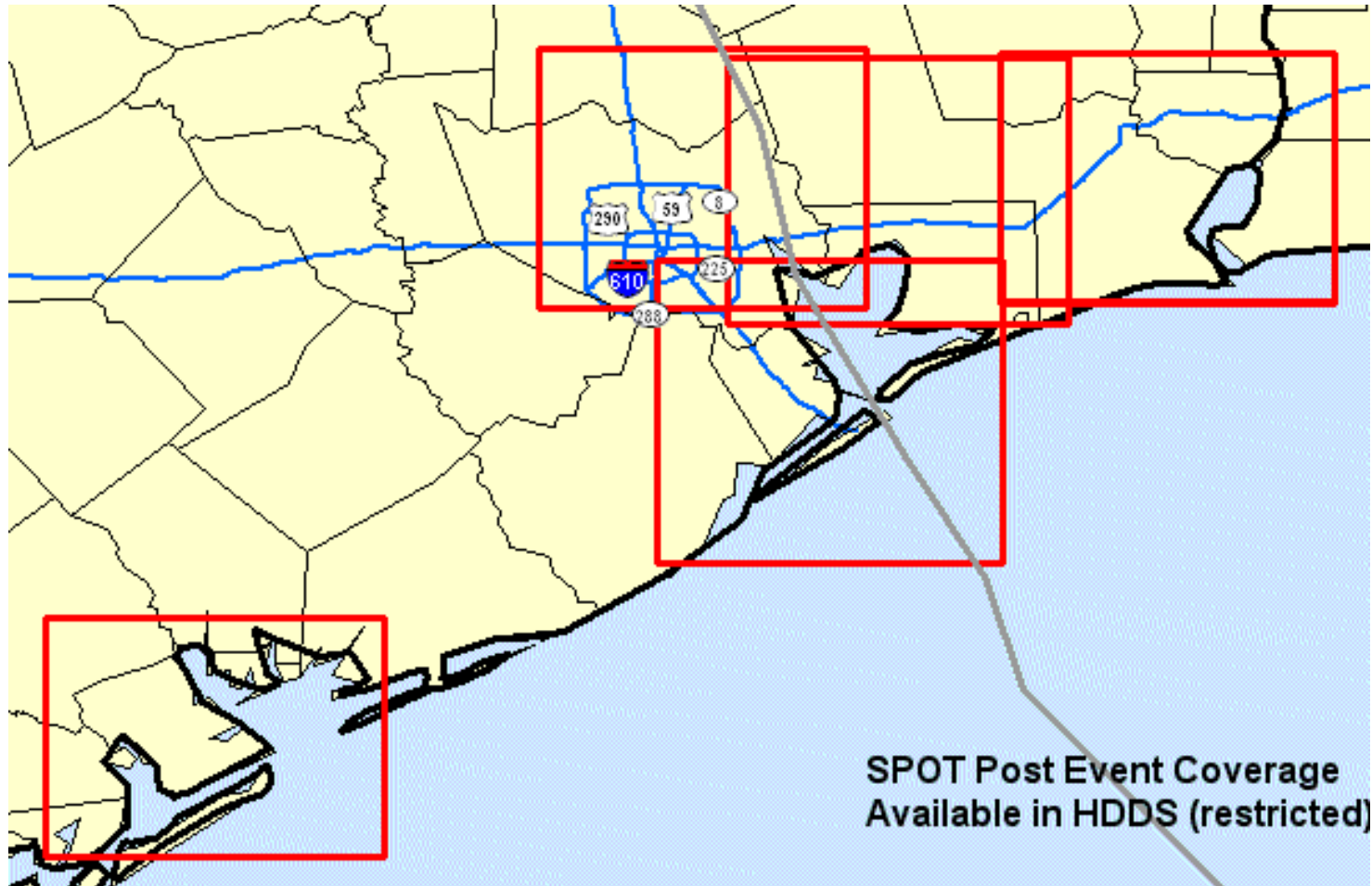


Gulf\_Landsat7\_PostEvent\_Cover

Gulf\_Landsat5\_PostEvent\_Cover

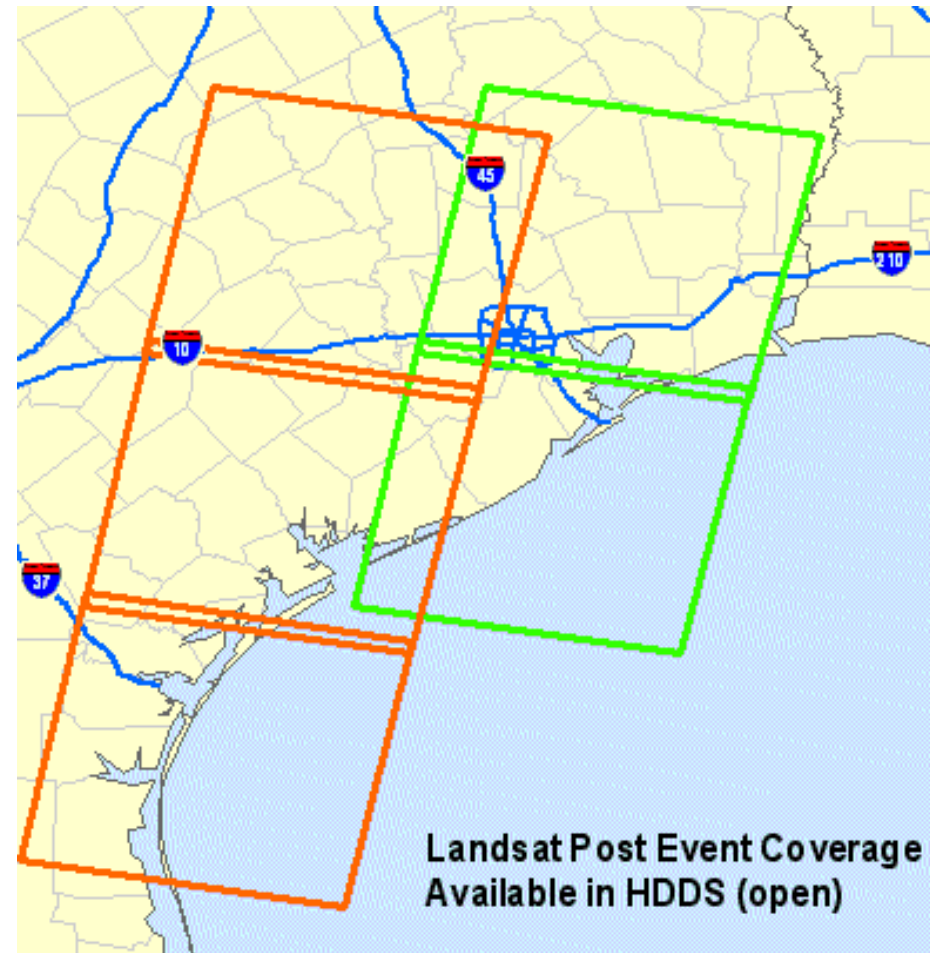
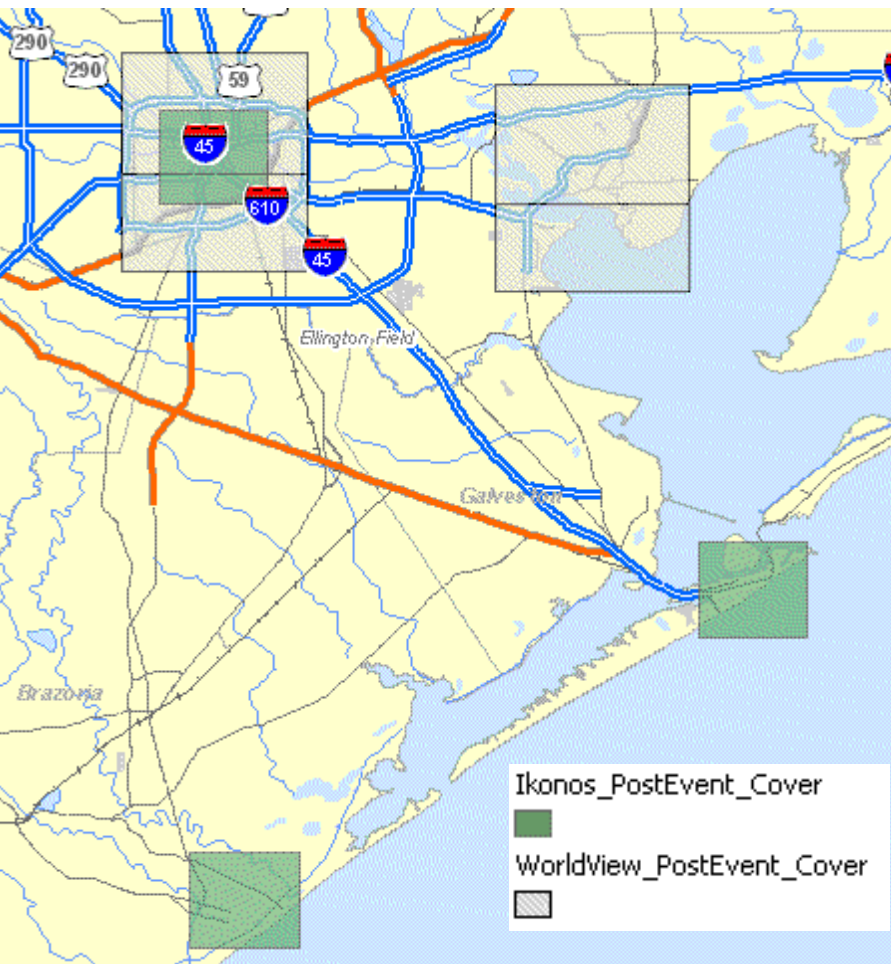
ASTER\_PostEvent\_Cover

# Spot Coverage for Ike

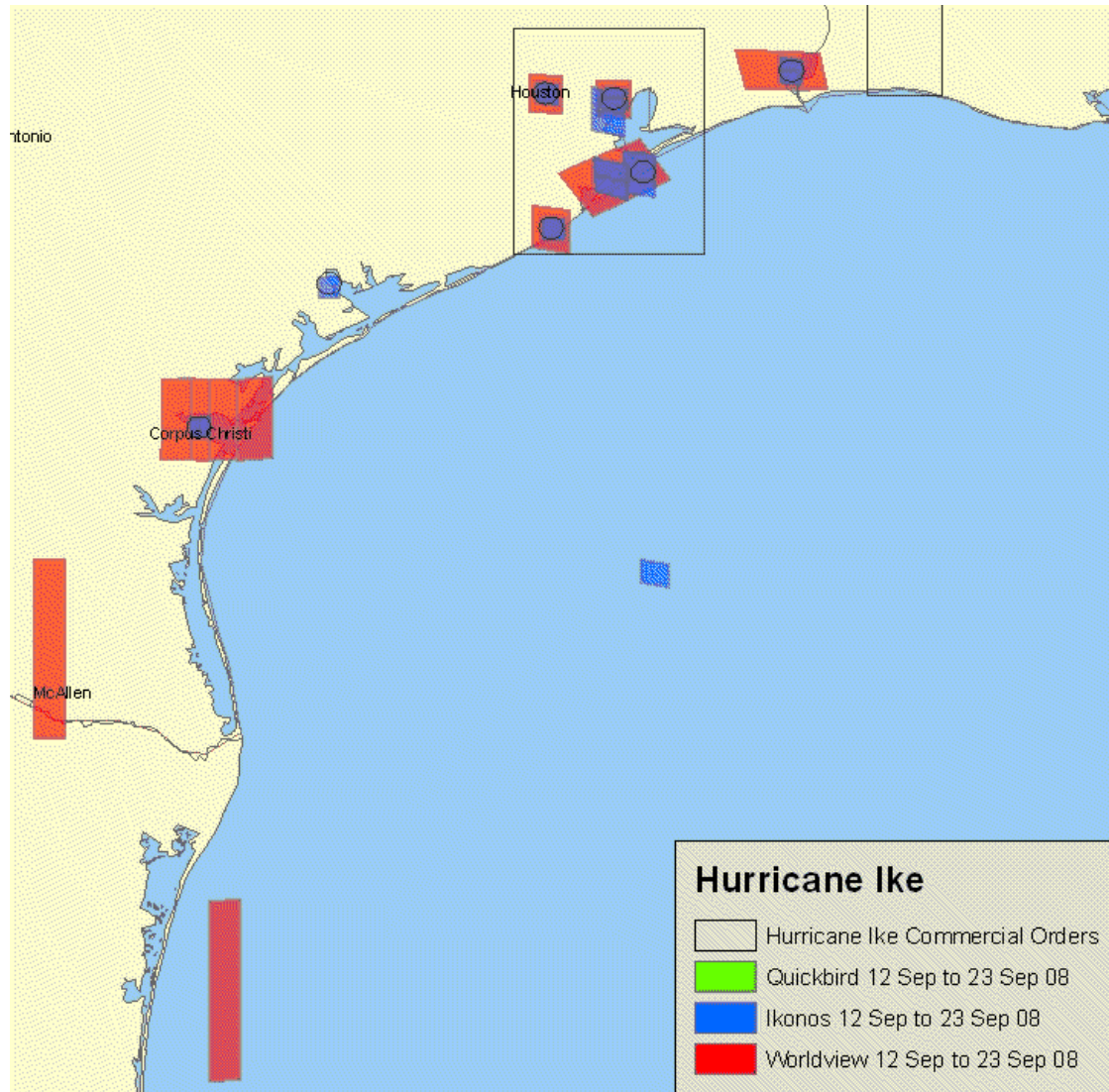




# Ikonos, WorldView and Landsat for Ike

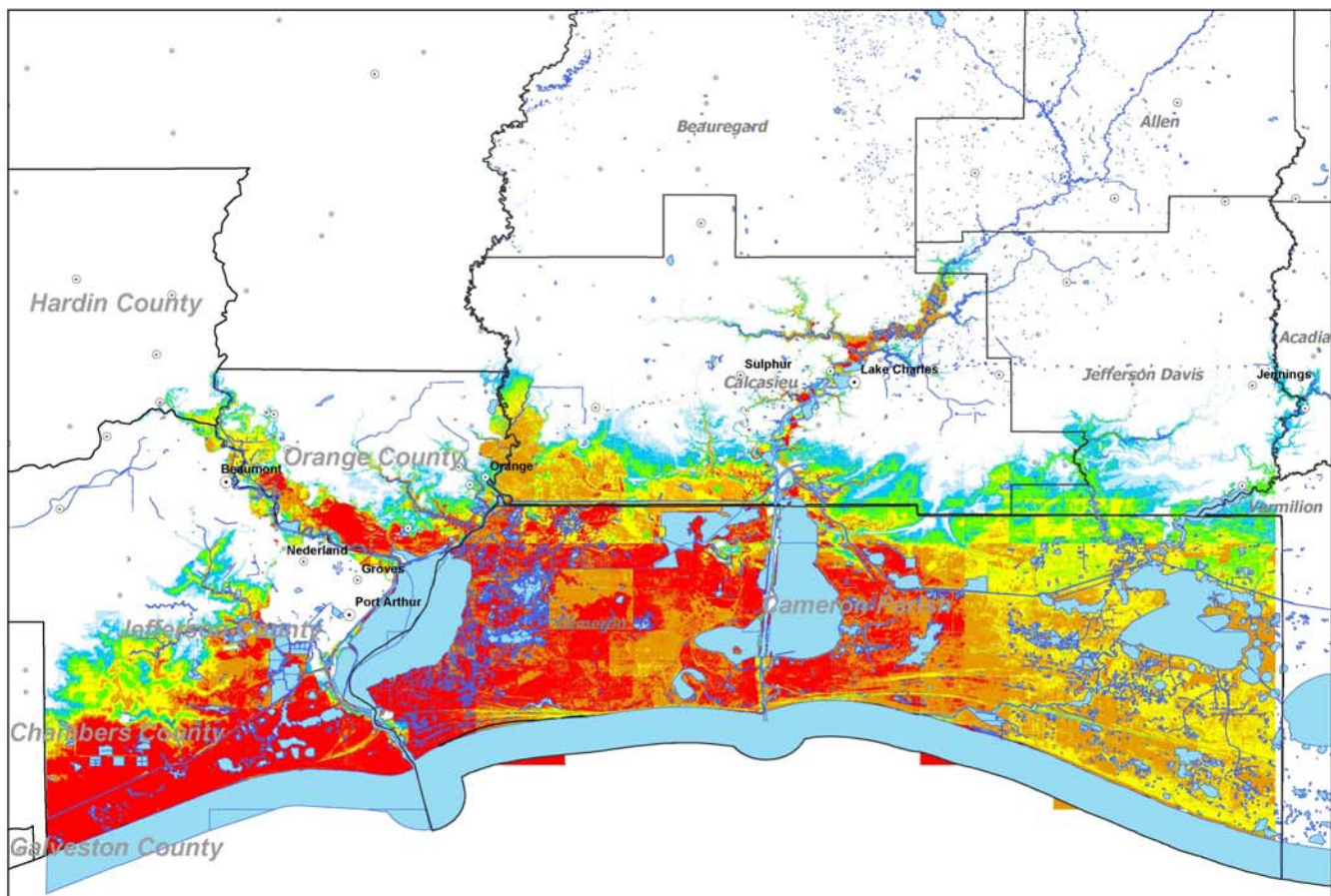


# Post Event Imagery In Warp for Ike



# Preliminary inundation analysis developed by NOAA NWS LCH December 1, 2008

## Hurricane Ike Inundation Estimate



### Legend

### Inundation (Feet)

- >10 Feet
- 8-10 Feet
- 6-8 Feet
- 4-6 Feet
- 2-4 Feet
- < 2 Feet
- No Inundation

Note: This is the best estimate of storm tide at the time the map was made on November 4th. This map should be considered preliminary and will be updated as new information becomes available. Use map with caution. All elevation data is in NAVD88.