

Photo Science Presentation

2008 NAIP Post-Mortem Meeting

November 19th, 2008

Bob Hickey
Forrest Godby

Chris Schnell

2008 NAIP States

- Kentucky
 - 2930 DOQQ's
 - *Acquisition :*
June 15 – August 15
- Indiana
 - 2692 DOQQ's
 - *Acquisition :*
June 15 – August 15
- North Carolina
 - 3577 DOQQ's
 - *Acquisition :*
June 1 - August 31

NAIP Digital Collection Resources

- Five DMC Cameras
- All Equipped with ABGPS and IMU Technology
- Three Cameras equipped with NAVCOM GPS Augmentation
- Four Turbine Aircraft and One Piston Twin



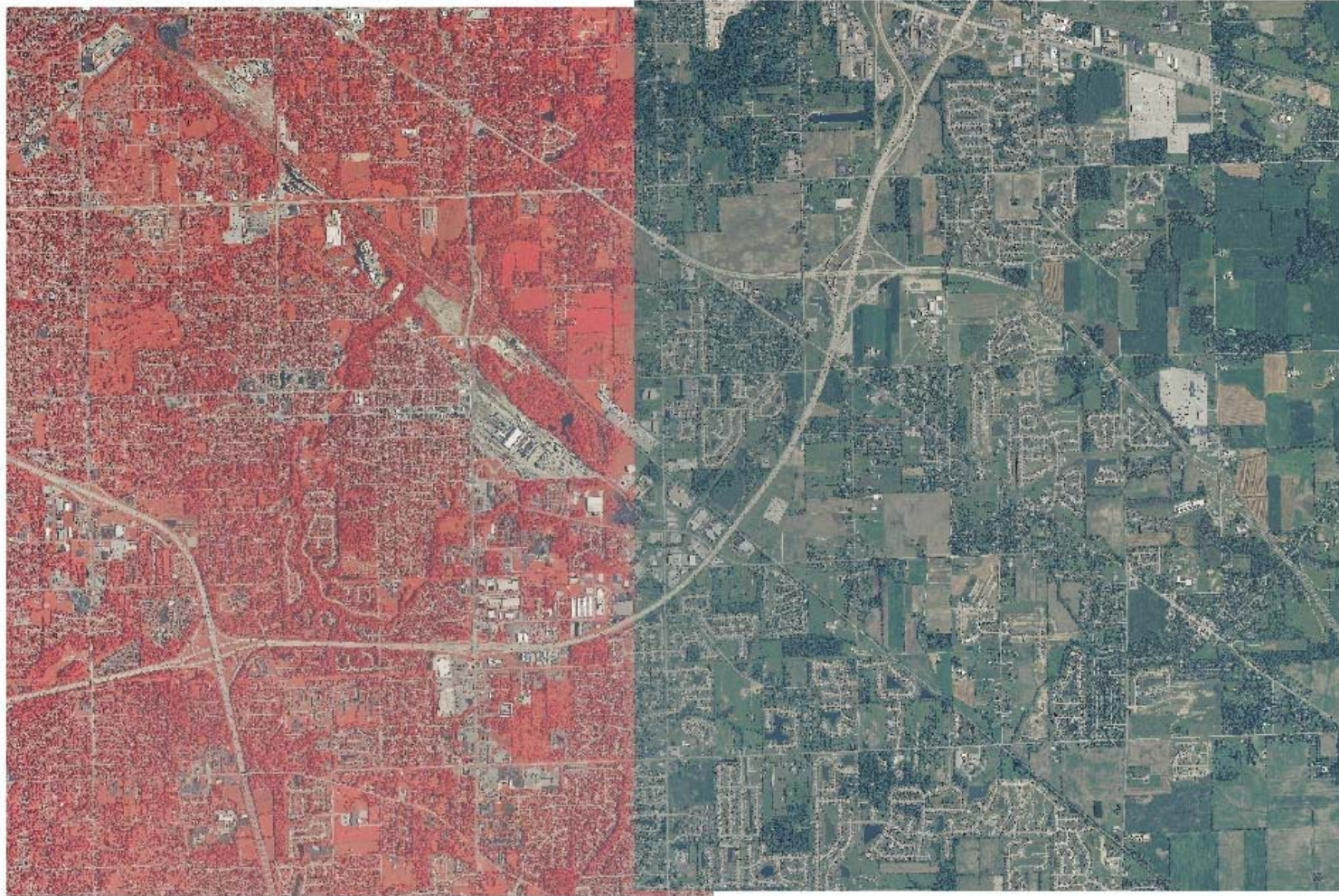
NAIP 2008 Collection Resources

- PSI *2 Turbines* *2 DMC*
- Schubert *1 Turbine* *1 DMC*
- AME *1 Turbine* *1 DMC*
- RCA *1 Piston Twin* *1 DMC*

Indiana

- First Date of Acquisition: July 1st
- Final Date of Acquisition: September 1st
- Days Imagery Acquired: 34
- 4-Band Imagery
- Absolute Accuracy
- Seamline Shapefile
- 2 weeks over on acquisition

Indiana (4-Band Imagery)



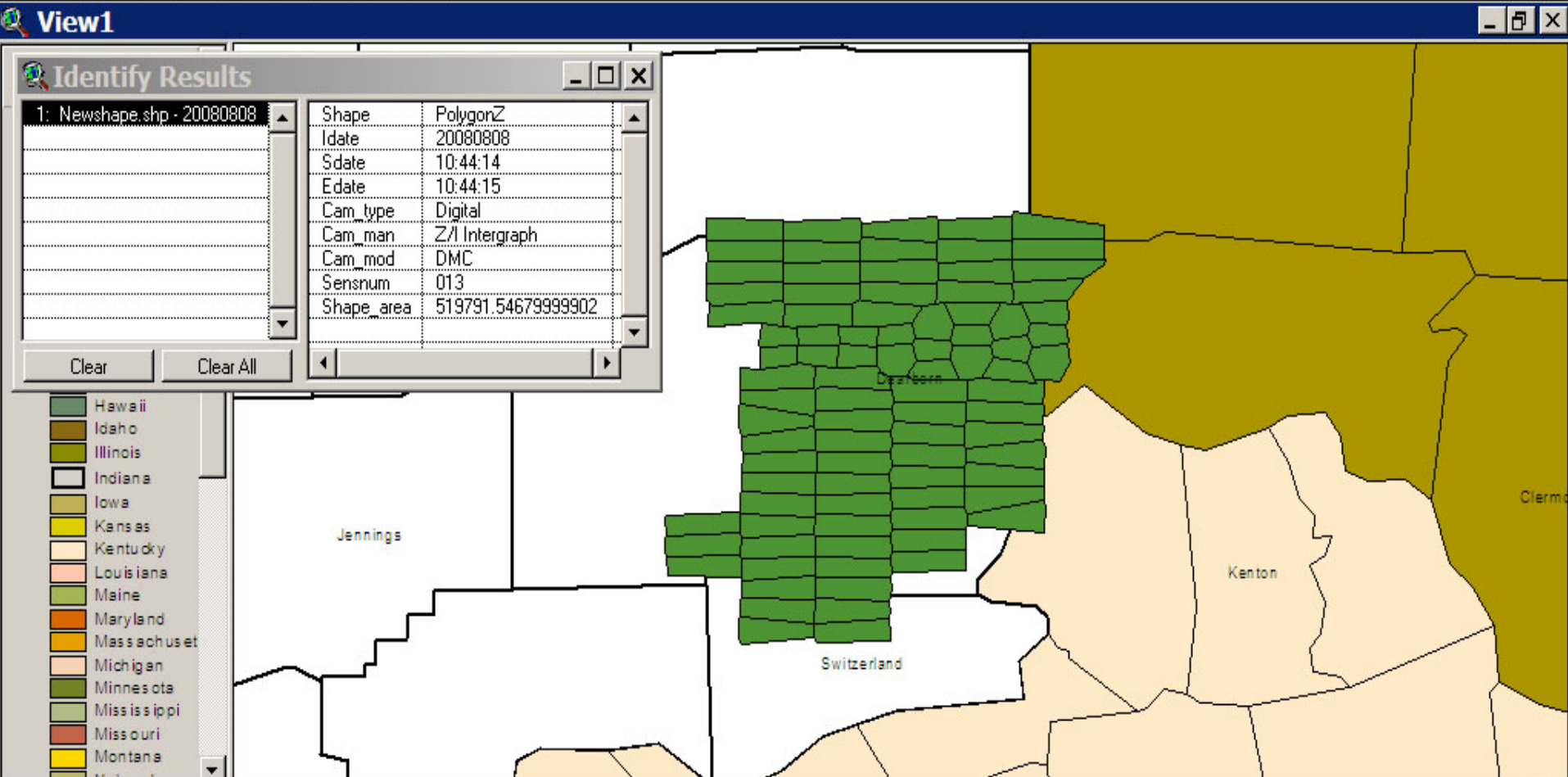
Indiana

- Process all 4 bands together
- 12 bit initial processing of the frames
- 8 bit dodging & rectification process
- Mosaicing & tone balancing DOQQ's
- Overall adjustment of the CCM's

Indiana (Seamline Shapefile)

- Exposure Centered Seamlines
- OrthoPro – centered vs. smart seams
- Automated - Camera MDB files with the exposures centers & creating Arc file & database

Indiana (Seamline Shapefile)



Indiana (Absolute Accuracy)

- 50 control points (6 not used) -
- RMSE 3.86 meters
- IMU & Airborne GPS direct georeferencing

North Carolina

- 3-Band
- First Date of Acquisition: June 8th
- Final Date of Acquisition: October 5th
- Days Imagery Acquired: 39
- Absolute Accuracy
- Seamline Shapefile
- 4 weeks over on acquisition

Kentucky

- 3-Band
- First Date of Acquisition: June 15th
- Final Date of Acquisition: August 19th
- Days Imagery Acquired: 21
- 4 days over on acquisition

Issues with Acquisition

- Weather (especially NC)
 - Hurricanes
 - Disaster Response
- Equipment



Photo Science Pixel Farm
468 Terrabytes - Active