
Aerial Services Inc. Team

2008 NAIP Post Season Summary

19 November 2008

Kirk Fisher, VP, CFO, Director of Flight Operations

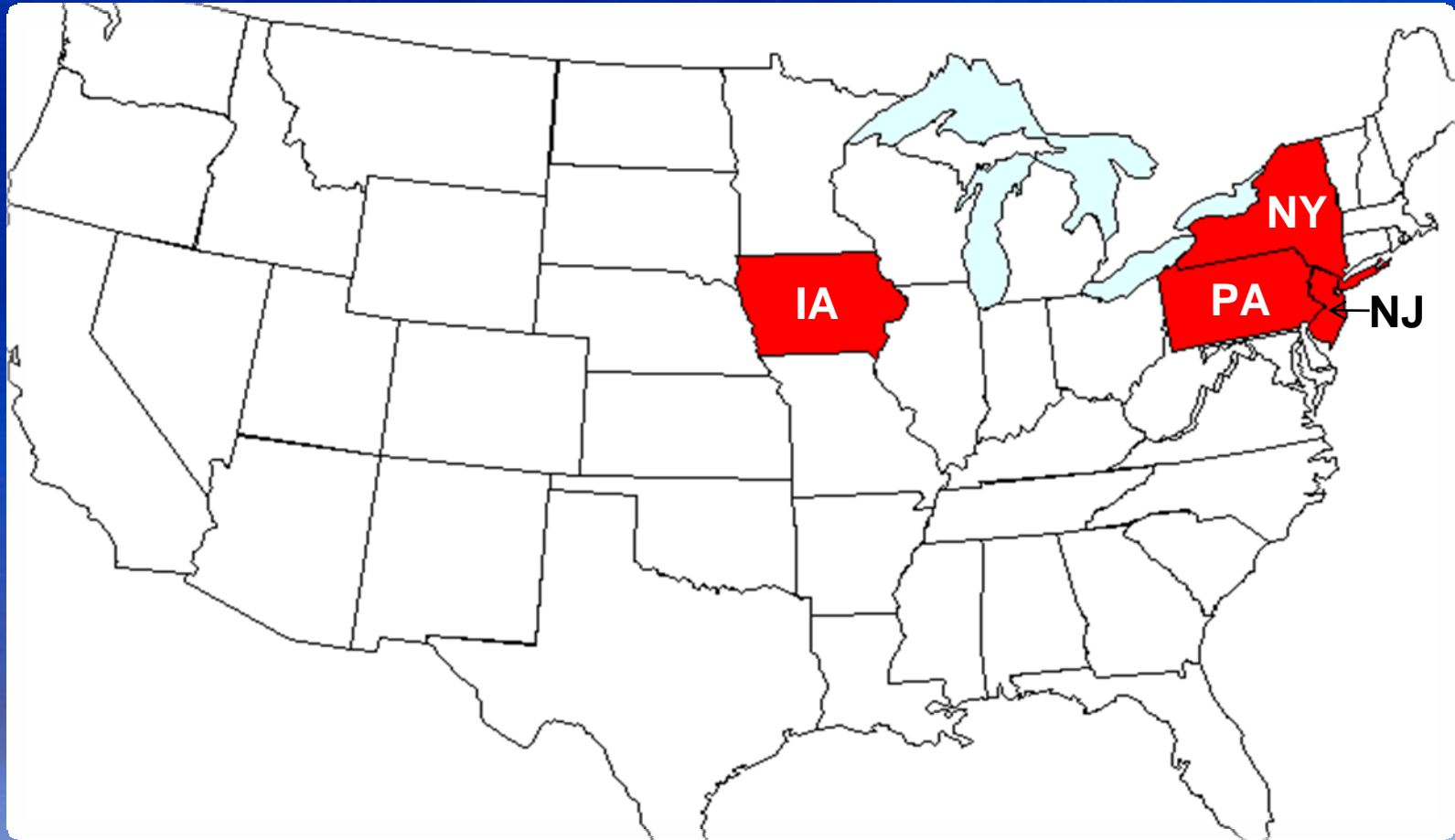
Coral Schneberger, CP, Project Manager



Team Project Areas

4 states: 1m natural color – film

- ❖ Iowa
- ❖ New York
- ❖ New Jersey
- ❖ Pennsylvania



Unexpected Events

❖ 2008 Midwest Flooding

- High and/or Standing Water delayed Iowa acquisition
- Loss and Relocation of ASI Office
- Loss of data when 1 server was not recoverable
- Production: scanning & ortho down 3-4 weeks

❖ Plane Crash

- Lost 1 sub-contractor for 2 months

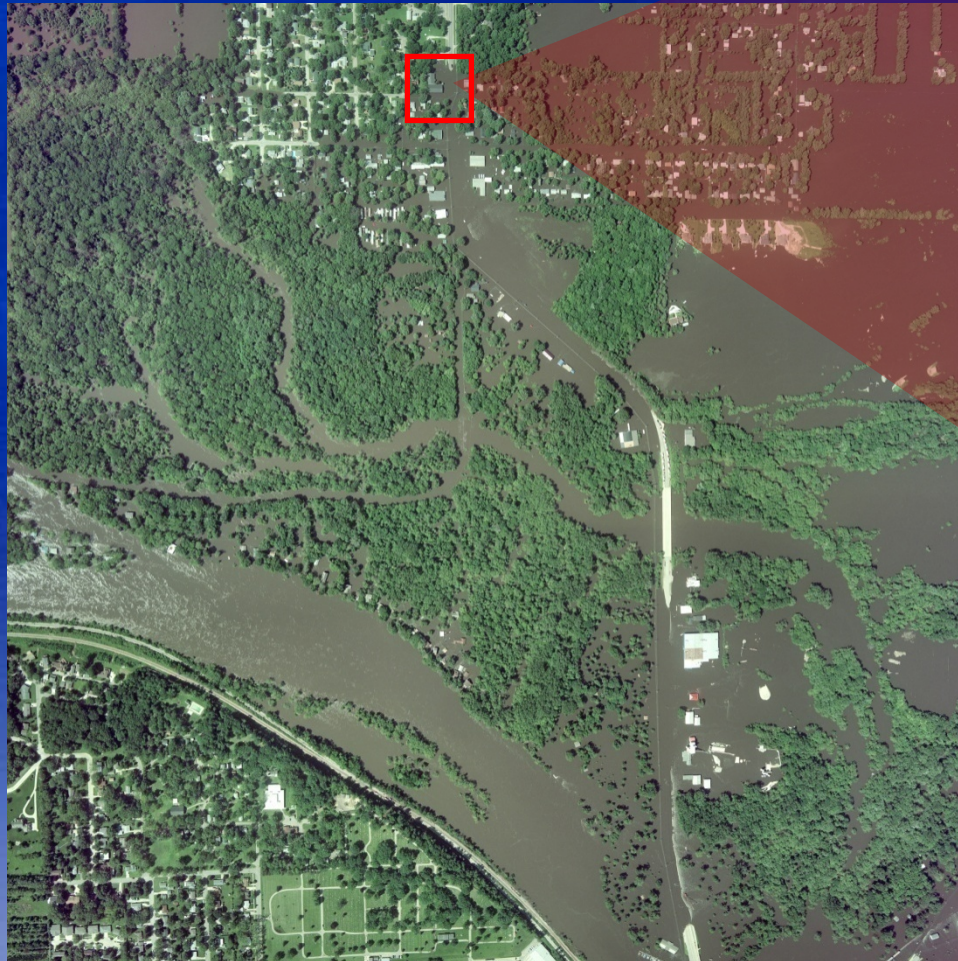


ASI Office Flooding: 6-10-08

Flood Stage: 88'

River Level 6/10: 99.4'

Crest 6/11: 102.13'



Hallway & Window View



Kitchen



Save the Conference Room Table!



After the Water Went Down



New Location



Lost 1 Server

3 -4 week stoppage in production
Scanners had to be recalibrated
Cables lost during rushed move

Servers and internet interruptions at current location

City Utility Company was also flooded and moved to the industrial park.

Everyone's nightmare come true



Iowa Summary

- 4,238 DOQQs and 99 CCMs
- Seamline Shape Files Delivered
- 58,719 sq. miles
- Season: June 21 – Sept 15
- 1 extension to Sept 30 (capture completed Oct 6)
- 5 film based cameras used in IA

All production work provided by ASI

- CCM due Oct 31: Final shipment sent Oct 31
- Final deliveries due Nov 15: Final Shipment Nov. 17



New Jersey Summary

- 479 DOQQs and 18 CCMs
- 6,829 sq. miles
- Season: July 1 – Aug 15
- 1 extension to Aug 31 (capture completed Aug 26)
- 3 film based cameras used in NJ

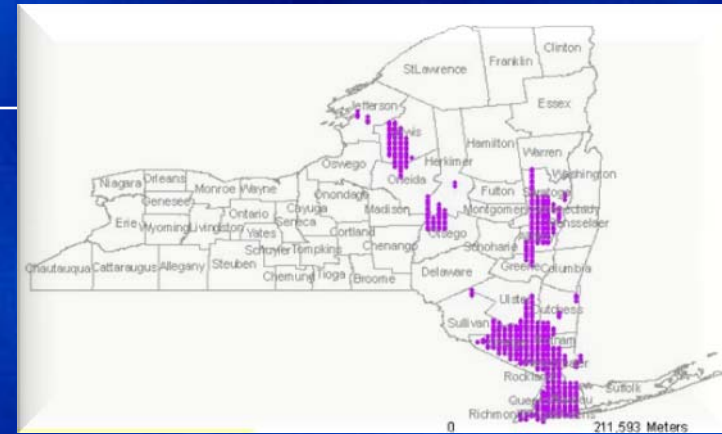
All production work provided by ASI

- CCM due Sept. 30: Final shipment sent Sept. 26
- Final deliveries due Oct. 15: Final Shipment sent Oct .11



New York Summary:

- 3,879 DOQQs and 62 CCMs
- 53,060 sq. miles
- Season: May 1 – Sept 30
- 3 extensions to Nov 15 (capture still in progress)
 - Tough flying in Boston & New York City airspace
- 5 film based cameras used in NY



Production work provided by ASI (98%) & GRW (2%)

- CCM due Dec 15:
 - 21 of 62 CCMs delivered as of 11-13-08
 - Final shipment date - TBD
- Final deliveries due Dec 31: Final Shipment TBD



Pennsylvania Summary:

- 3,342 DOQQs and 66 CCMs
- 43,756 sq. miles
- Season: June 1 – Aug 30
- 3 extensions to Oct 15 (capture completed Oct 11)
- 5 film based cameras used in PA

Production work provided by ASI (98%) & GRW (2%)

- CCMs due Nov 15:
 - 38 of 66 CCMs delivered as of 11-17-08
 - Final shipment mid to end of week beginning Nov. 17
- Final deliveries due Nov 30: Final Shipment - TBD



Upcoming addition to ASI

Being installed as we speak.



Leica ADS80-SH82



- Delivery: 11/17/08
- Calibration Site & Test Flight
- 1st Pav80 Gyro-mount

