

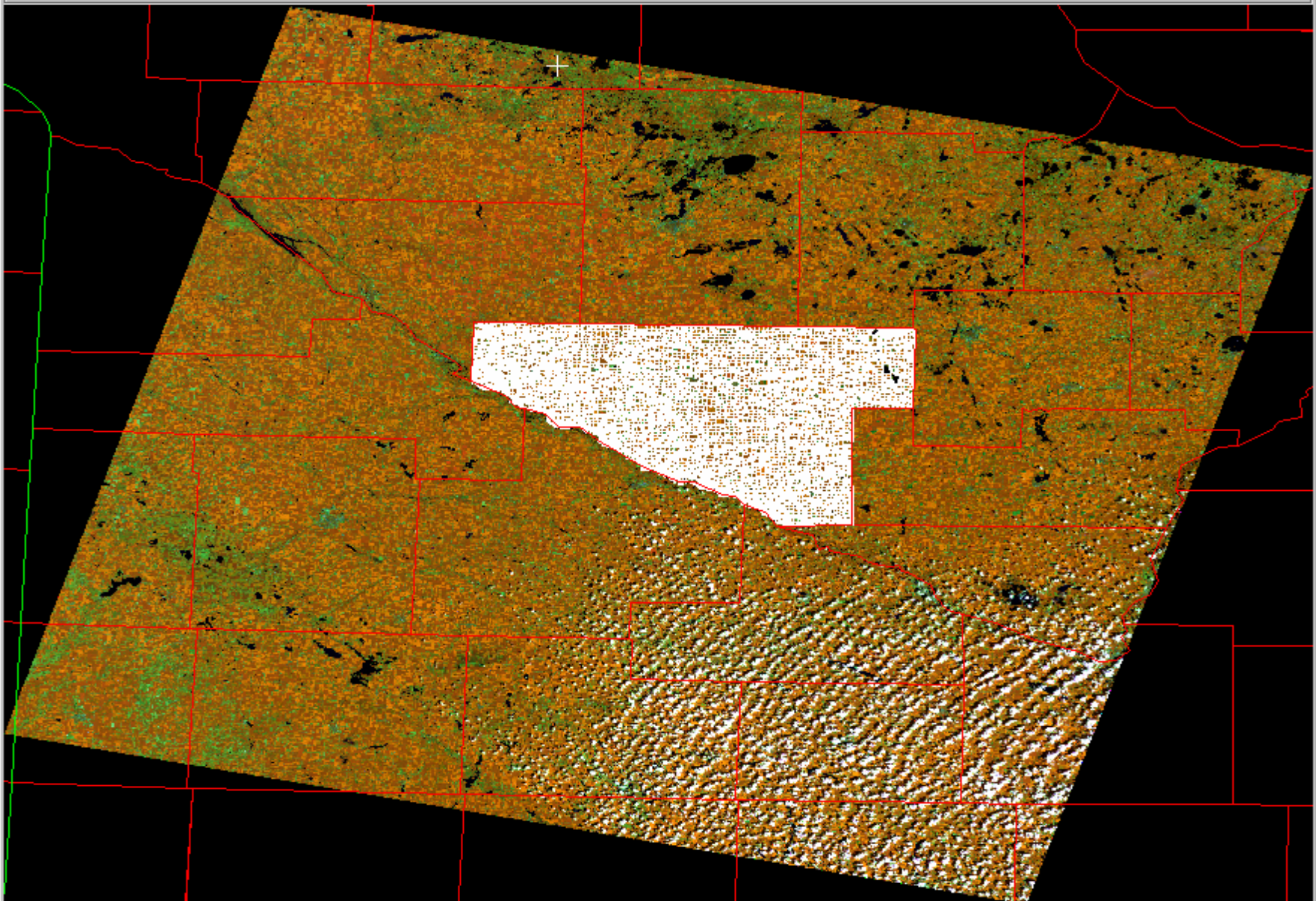
“Seamless” Ortho Imagery

USDA/FSA Service Center - GIS Implementation

Implementation Strategy:

- Provide best starting point for digitizing field boundaries
 - Quality Assured
- User friendly ortho image base
 - Tone matched
 - Edge matched





LS5
8/02/2000

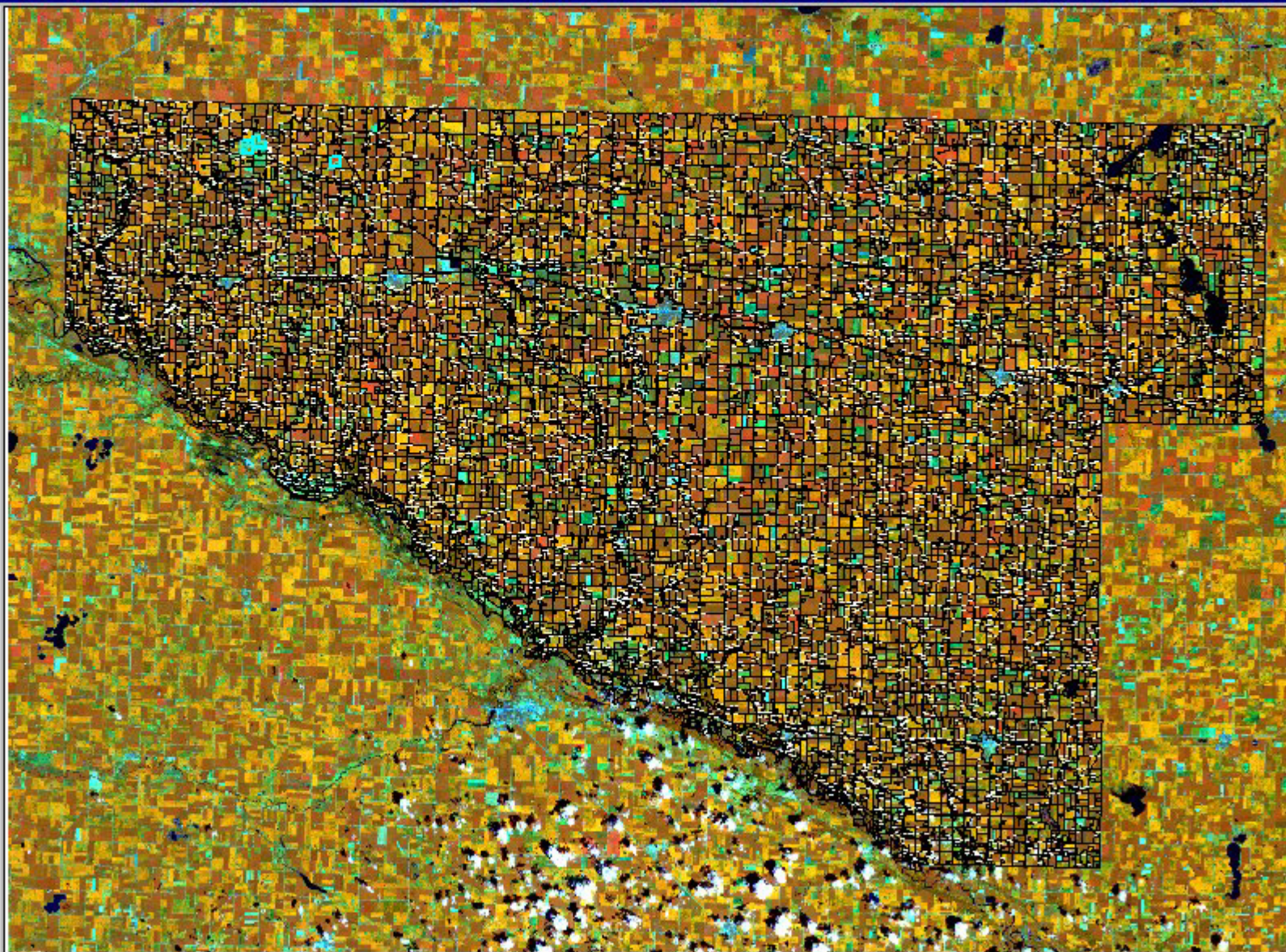


Scale 1: 397,706

302,818.21
4,976,761.48

Renville, MN Selected Reported Crops

- CLU
- E028029_20000802
- E028029_20000701



“Seamless” Ortho Imagery

USDA Service Center - GIS Implementation

Current Environment:

Distribution/Access

- Data can/should be local for FSA applications
 - ArcView 3.2
 - Limited bandwidth into field service centers



“Seamless” Ortho Imagery

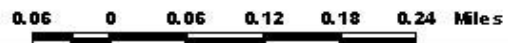
Mosaicked DOQs (MDOQs)

- Edge Matched and Tone Matched
 - within counties
 - within UTM zones
- Tiled in 7.5” quads
- Compressed into County Mosaic (MrSID)





Map of one 578 Crop with CLU over Ikonos Imagery
Unreported Fields and Subfields
FSA/ITSD/RSS 1/12/2001



“Seamless” Ortho Imagery

USDA Service Center - GIS Implementation

Current Environment:

Distribution/Access

- Data can/should be local for FSA applications
 - ArcView 3.2
 - Limited bandwidth into field service centers



“Seamless” Ortho Imagery

Mosaicked DOQs (MDOQs)

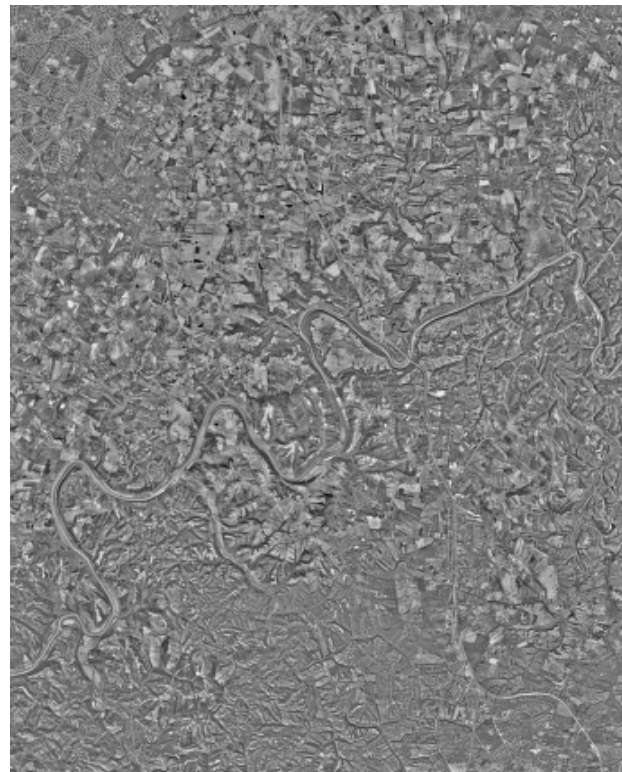
- Edge Matched and Tone Matched
 - within counties
 - within UTM zones
- Tiled in 7.5” quads
- Compressed into County Mosaic (MrSID)



“User Friendly” - Tone Balancing



Fayette County, Kentucky
DOQs



Fayette County, Kentucky
M DOQS/Compressed County Mosaic



Tone Balancing



DOQs



MDOQs



Edge Matching - QA for Digitizing FSA field boundaries



DOQs



MDOQs

