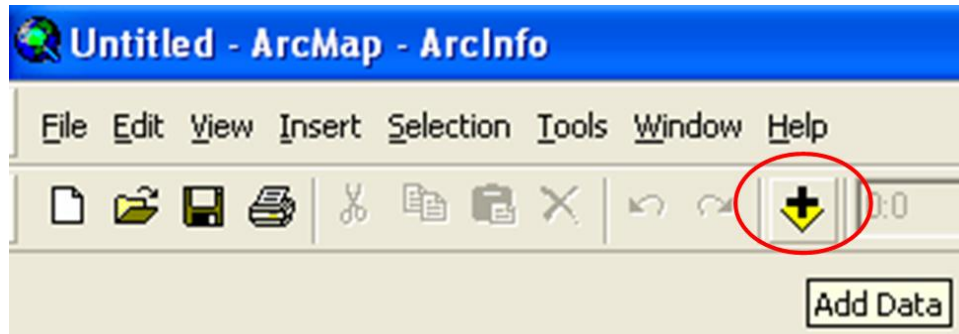
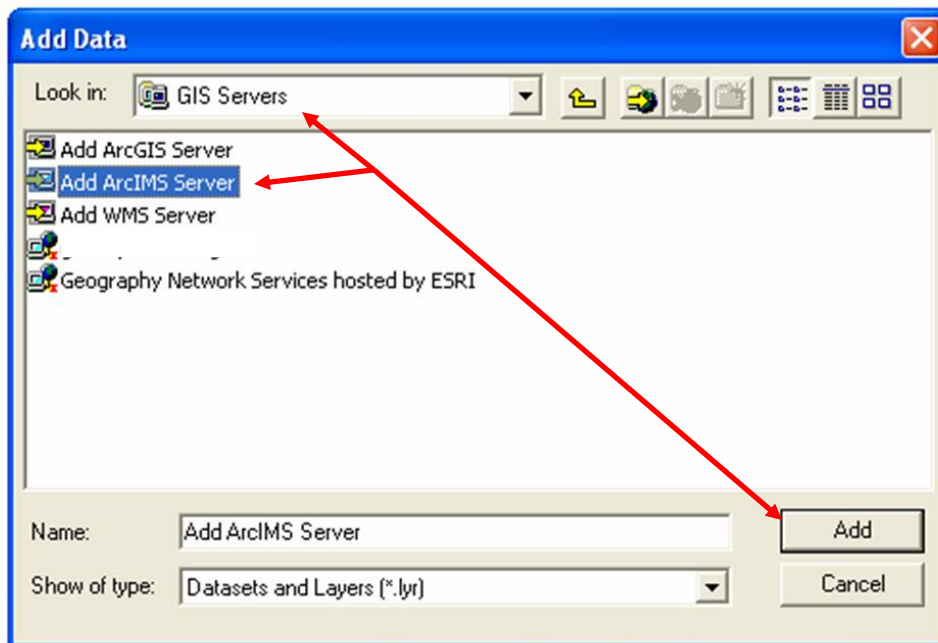


## Adding an ArcIMS Web Service to ArcMap in ArcGIS 9.1

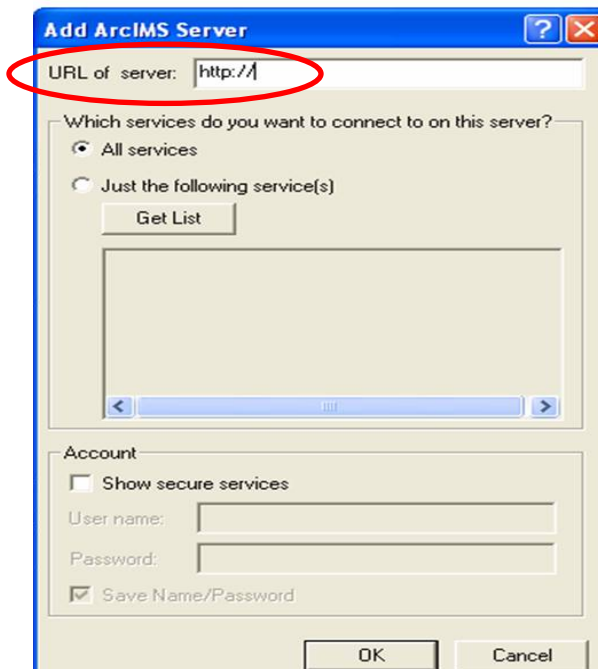
1. Open ArcMap.
2. Click the 'Add Data' button.



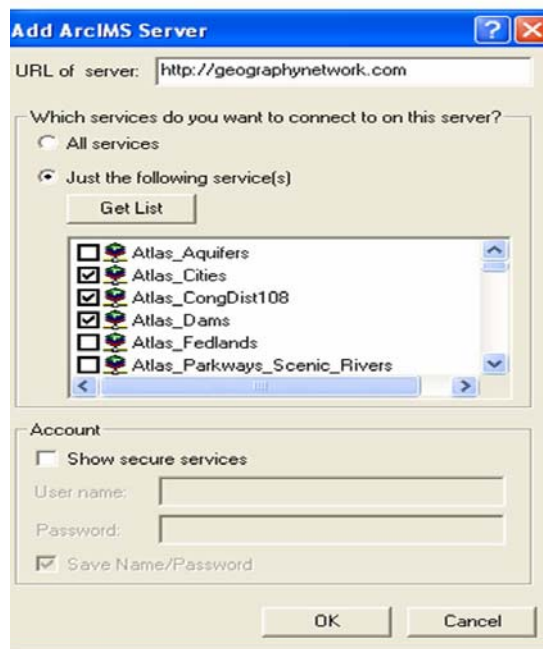
3. When the popup window appears, navigate to 'GIS Servers' and double click 'Add ArcIMS Server', or if you'd rather, single click 'Add ArcIMS Server' and click 'Add'.



4. The 'Add ArcIMS Server' window will appear. Under 'URL of server', type in the website address of the ArcIMS Server you wish to connect to.



5. If you need all services under a particular ArcIMS Server, then leave the 'All Services' radio button selected.
6. If you only need selected services, then select the 'Just the following service(s)' radio button, click the 'Get List' box and check mark the services you need once they appear.



7. If you require a secure service, then access to these services may be granted by entering a valid 'User name' and 'Password' after checking the 'Show secure services' box.



8. After the ArcIMS Web Service has been successfully added, you may then add data to ArcMap from the Web Service just as you would add any other data, by clicking the 'Add Data' button and selecting the data you desire to view.
9. ArcGIS and Web Mapping (WMS) Servers can be added into ArcMap in a similar manner as an ArcIMS Web Service. Consult 'ArcGIS Desktop Help' for details.

**For additional information contact:**

**USDA-FSA**

**Aerial Photography Field Office**

**2222 West 2300 South**

**Salt Lake City, UT 84119-2020**

**801-975-3500**

**[www.apfo.usda.gov](http://www.apfo.usda.gov)**

