

# Arizona, 2005

## Primary and secondary syphilis

- **CASES:** Arizona reported 175 cases in 2005.
- **RATES:** Arizona ranked 15 among 50 states + DC + 3 territories: 3.0 cases per 100,000 population compared to the U.S. rate of 3.0 cases per 100,000 population.

## Male-female rates of primary and secondary syphilis

- In Arizona, the rate among males was 4.3 per 100,000 population compared to the U.S. male rate of 5.1 per 100,000.
- The rate among females was 1.7 per 100,000 compared to the U.S. female rate of 0.9 per 100,000.

## Racial disparities of primary and secondary syphilis

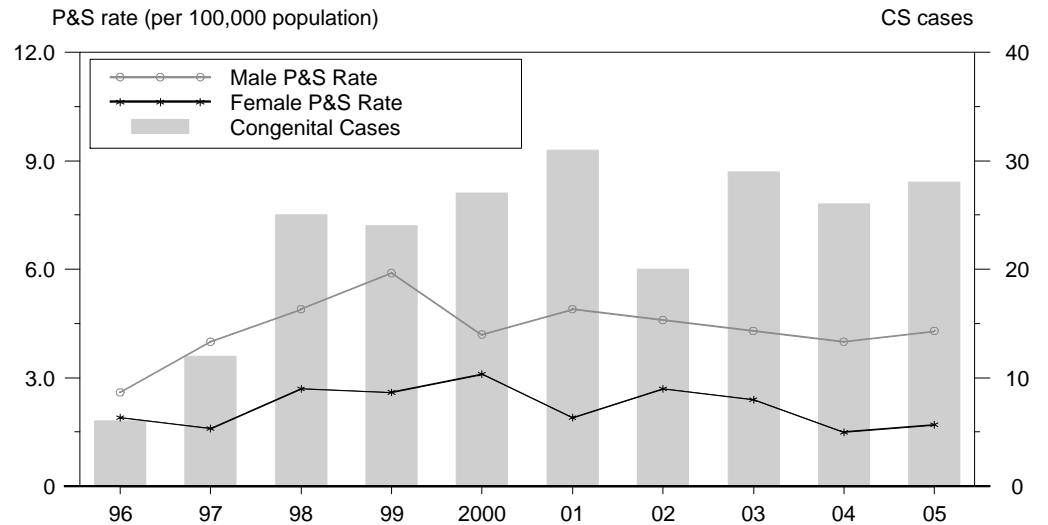
In Arizona, the race/ethnicity adjusted rates per 100,000 population were 1.7 among whites, 9.8 among blacks, 4.8 among Hispanics, 2.3 among Asian/Pacific Islanders, and 5.3 among American Indians/Alaska Natives.

- The rate among blacks was 5.8 times that of whites.
- The rate among Hispanics was 2.8 times that of whites.
- The rate among Asian/Pacific Islanders was 1.4 times that of whites.
- The rate among American Indians/Alaska Natives was 3.1 times that of whites.

## Congenital syphilis

- **CASES:** Arizona reported 28 cases in 2005.
- **RATES:** Arizona ranked 1 among 28 states + 2 territories reporting at least one congenital syphilis case: 30.8 cases per 100,000 live births compared to the U.S. rate of 8.0 cases per 100,000.

## Syphilis: P&S Rates and Congenital Cases, Arizona, 1996-2005



## Total P&S Syphilis Rates by County, Arizona, 2005

