

[USGS Home Contact](#)

[USGS Search USGS](#)

Woods Hole Science Center

[WHSC Home](#) [Projects](#) [Technology](#) [Publications](#) [Data](#) [People](#) [Location](#) [Contact Us](#)

[Back to Marine Nuisance Species](#)

Printable version in [PDF format](#)

Didemnum sp. - Georges Bank Images

[1 Nov. 03](#) / [26 Aug. 06](#)

August 25, 2006

[Click here for video of *Didemnum* sp. colonies in Georges Bank.](#)

Video imagery VB_GB7_GBvideo1.

Didemnum sp. colonies growing on gravel habitat; various colors represent different colonies growing against each other. Georges Bank (41 deg 55.12 m N lat, 67 deg 18.61 min W lon). Water depth 48m. August 25, 2006. Video credit: Page Valentine and Dann Blackwood (USGS). Video duration 2 min. [Location no. 70.](#)

[Click here to download video.](#)

November 1, 2003



Image VB_GB1_36660070

Image VB_GB1_36660070. Tunicate colonies of *Didemnum* sp. completely covering pebble gravel habitat. Small burrowing anemones surrounded and overgrown by tunicates. Two clam siphons surrounded by tunicate are visible in lower right center of image. Image height is 19 inches (48 cm). Station 311020 (41 deg 57.148 min N lat, 67 deg 30.891 min W lon). Northern Georges Bank. Water depth 47 m (154 ft). November 1, 2003. Collectors: Page Valentine, Jeremy Collie, Robert Reid. Photo credit: Page Valentine and Dann Blackwood, U.S. Geological Survey. [Location no. 2.](#)
Click here to [download image.](#)



Image VB_GB1_36660079

Image VB_GB1_36660079. Tunicate colonies of *Didemnum* sp. almost completely covering pebble gravel habitat. Tunicate is growing over colonies of sea pork (*Aplidium* sp.; upper left), hydroids (upper right center), and polychaete worm (*Filograna implexa*; upper center and right center). Image height is 20 inches (51 cm). Station 311020 (41 deg 57.148 min N lat, 67 deg 30.891 min W lon). Northern Georges Bank. Water depth 47 m (154 ft). November 1, 2003. Collectors: Page Valentine, Jeremy Collie, Robert Reid. Photo credit: Page Valentine and Dann Blackwood, U. S. Geological Survey. [Location no. 2.](#)
Click here to [download image.](#)



Image VB_GB1_36660080

Image VB_GB1_36660080. Tunicate colonies of *Didemnum* sp. completely covering pebble gravel habitat. Two clam siphons surrounded by tunicate are visible in center of image. Image height is 20 inches (51 cm). Station 311020 (41 deg 57.148 min N lat, 67 deg 30.891 min W lon). Northern Georges Bank. Water depth 47 m (154 ft). November 1, 2003. Collectors: Page Valentine, Jeremy Collie, Robert Reid. Photo credit: Page Valentine and Dann Blackwood, U.S. Geological Survey. [Location no. 2.](#)

[Click here to download image.](#)



Image VB_GB1_36660086

Image VB_GB1_36660086. Tunicate colonies of *Didemnum* sp. completely covering pebble gravel habitat. Image height is 20 inches (51 cm). Station 311020 (41 deg 57.148 min N lat, 67 deg 30.891 min W lon). Northern Georges Bank. Water depth 47 m (154 ft). November 1, 2003. Collectors: Page Valentine, Jeremy Collie, Robert Reid. Photo credit: Page Valentine and Dann Blackwood, U.S. Geological Survey. [Location no. 2.](#)

[Click here to download image.](#)



Image VB_GB1_36660087

Image VB_GB1_36660087. Tunicate colonies of *Didemnum* sp. encrusting a boulder on pebble gravel habitat. Sea scallop approximately 5 inches (13 cm) in diameter unaffected by tunicates. One clam siphon is surrounded by tunicate visible to right of sea scallop. Station 311020 (41 deg 57.148 min N lat, 67 deg 30.891 min W lon). Northern Georges Bank. Water depth 47 m (154 ft). November 1, 2003. Collectors: Page Valentine, Jeremy Collie, Robert Reid. Photo credit: Page Valentine and Dann Blackwood, U.S. Geological Survey. [Location no. 2.](#)

[Click here to download image.](#)



Image VB_GB1_36660089

Image VB_GB1_36660089. Tunicate colonies of *Didemnum* sp. encrusting pebble gravel habitat and a sea scallop 5 inches (13 cm) in diameter. Station 311020 (41 deg 57.148 min N lat, 67 deg 30.891 min W lon). Northern Georges Bank. Water depth 47 m (154 ft). November 1, 2003. Collectors: Page Valentine, Jeremy Collie, Robert Reid. Photo credit: Page Valentine and Dann Blackwood, U. S. Geological Survey. [Location no. 2.](#)

[Click here to download image.](#)



Image VB_GB1_36670001

Image VB_GB1_36670001. Tunicate colonies of *Didemnum* sp. encrusting pebble gravel habitat. Sea scallop approximately 5 inches (13 cm) in diameter) with hydroid colony overgrown by tunicate. Two clam siphons visible to right of center of the image. Station 311020 (41 deg 57.148 min N lat, 67 deg 30.891 min W lon). Northern Georges Bank. Water depth 47 m (154 ft). November 1, 2003. Collectors: Page Valentine, Jeremy Collie, Robert Reid. Photo credit: Page Valentine and Dann Blackwood, U.S. Geological Survey. [Location no. 2.](#)

[Click here to download image.](#)



Image VB_GB1_36670005

Image VB_GB1_36670005. Tunicate colonies of *Didemnum* sp. encrusting pebble gravel habitat. Young haddock 5 inches (13 cm) long. Station 311020 (41 deg 57.148 min N lat, 67 deg 30.891 min W lon). Northern Georges Bank. Water depth 47 m (154 ft). November 1, 2003. Collectors: Page Valentine, Jeremy Collie, Robert Reid. Photo credit: Page Valentine and Dann Blackwood, U.S. Geological Survey. [Location no. 2.](#)

[Click here to download image.](#)



Image VB_GB1_36670012

Image VB_GB1_36670012. Small, expanding tunicate colony of *Didemnum* sp. lying near the margin of a larger colony on exposed sand in pebble gravel habitat. Image height is 18 inches (46 cm). Station 311021 (41 deg 58.474 min N lat, 67 deg 30.969 min W lon). Northern Georges Bank. Water depth 41 m (135 ft). November 1, 2003. Collectors: Page Valentine, Jeremy Collie, Robert Reid. Photo credit: Page Valentine and Dann Blackwood, U.S. Geological Survey. [Location no. 3.](#)

Click here to [download image.](#)



Image VB_GB1_36670020

Image VB_GB1_36670020. Tunicate colonies of *Didemnum* sp. encrusting pebble gravel habitat. Pebbles can be observed through the single thin layer of tunicates in the lower right hand part of the photo. Image height is 14 inches (36 cm). Station 311021 (41 deg 58.474 min N lat, 67 deg 30.969 min W lon). Northern Georges Bank. Water depth 41 m (135 ft). November 1, 2003. Collectors: Page Valentine, Jeremy Collie, Robert Reid. Photo credit: Page Valentine and Dann Blackwood, U.S. Geological Survey. [Location no. 3.](#)

Click here to [download image.](#)

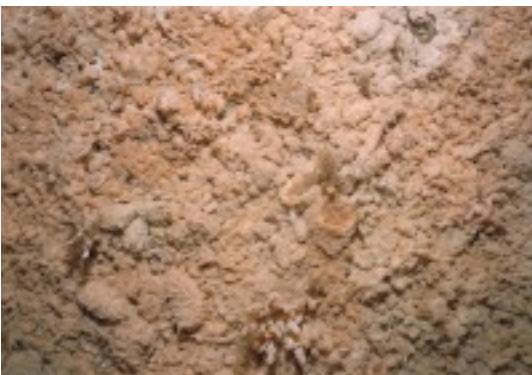


Image VB_GB1_36670028

Image VB_GB1_36670028. Tunicate colonies of *Didemnum* sp. completely covering pebble gravel habitat and overgrowing hydroid colonies. Image height is 17 inches (43 cm). Station 311021 (41 deg 58.474 min N lat, 67 deg 30.969 min W lon). Northern Georges Bank. Water depth 41 m (135 ft). November 1, 2003. Collectors: Page Valentine, Jeremy Collie, Robert Reid. Photo credit: Page Valentine and Dann Blackwood, U.S. Geological Survey. [Location no. 3.](#)

Click here to [download image.](#)



Image VB_GB1_36670042

Image VB_GB1_36670042. Tunicate colonies of *Didemnum* sp. encrusting pebble gravel habitat and overgrowing hydroid colonies (center and upper center of image) and a dark yellow sponge colony (lower center of image). Image height is 18 inches (46 cm). Station 311021 (41 deg 58.474 min N lat, 67 deg 30.969 min W lon). Northern Georges Bank. Water depth 41 m (135 ft). November 1, 2003. Collectors: Page Valentine, Jeremy Collie, Robert Reid. Photo credit: Page Valentine and Dann Blackwood, U.S. Geological Survey. [Location no. 3.](#)
Click here to [download image.](#)



Image VB_GB1_36670043

Image VB_GB1_36670043. Tunicate colonies of *Didemnum* sp. advancing from left to right over pebble gravel habitat. Image height is 20 inches (51 cm). Station 311021 (41 deg 58.474 min N lat, 67 deg 30.969 min W lon). Northern Georges Bank. Water depth 41 m (135 ft). November 1, 2003. Collectors: Page Valentine, Jeremy Collie, Robert Reid. Photo credit: Page Valentine and Dann Blackwood, U.S. Geological Survey. [Location no. 3.](#)
Click here to [download image.](#)



Image VB_GB1_36670050

Image VB_GB1_36670050. Very small, expanding tunicate colonies of *Didemnum* sp. on exposed sand in pebble gravel habitat with hydroid colonies. Image height is 19 inches (48 cm). Station 311022 (41 deg 58.179 min N lat, 67 deg 31.848 min W lon). Northern Georges Bank. Water depth 43 m (141 ft). November 1, 2003. Collectors: Page Valentine, Jeremy Collie, Robert Reid. Photo credit: Page Valentine and Dann Blackwood, U.S. Geological Survey. [Location no. 4.](#)
Click here to [download image.](#)

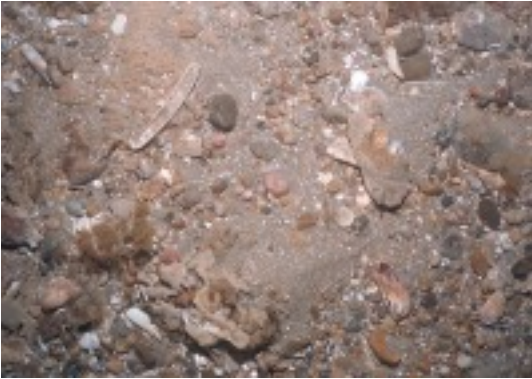


Image VB_GB1_36670052

Image VB_GB1_36670052. Small, expanding tunicate colonies of *Didemnum* sp. on exposed sand in pebble gravel habitat with hydroid colonies. Image height is 19 inches (48 cm). Station 311022 (41 deg 58.179 min N lat, 67 deg 31.848 min W lon). Northern Georges Bank. Water depth 43 m (141 ft). November 1, 2003. Collectors: Page Valentine, Jeremy Collie, Robert Reid. Photo credit: Page Valentine and Dann Blackwood, U.S. Geological Survey. [Location no. 4.](#)
Click here to [download image.](#)



Image VB_GB1_36670054

Image VB_GB1_36670054. Small, expanding tunicate colonies of *Didemnum* sp. on exposed sand in pebble gravel habitat with hydroid colonies. Image height is 19 inches (48 cm). Station 311022 (41 deg 58.179 min N lat, 67 deg 31.848 min W lon). Northern Georges Bank. Water depth 43 m (141 ft). November 1, 2003. Collectors: Page Valentine, Jeremy Collie, Robert Reid. Photo credit: Page Valentine and Dann Blackwood, U.S. Geological Survey. [Location no. 4.](#)
Click here to [download image.](#)



Image VB_GB1_36670060

Image VB_GB1_36670060. Very small tunicate colonies of *Didemnum* sp. invading a gravel habitat. Tunicate colonies is center and in upper right of image. Young haddock is approximately 8 inches (20 cm) long. Station 311022 (41 deg 58.179 min N lat, 67 deg 31.848 min W lon). Northern Georges Bank. Water depth 43 m (141 ft). November 1, 2003. Collectors: Page Valentine, Jeremy Collie, Robert Reid. Photo credit: Page Valentine and Dann Blackwood, U.S. Geological Survey. [Location no. 4.](#)
Click here to [download image.](#)

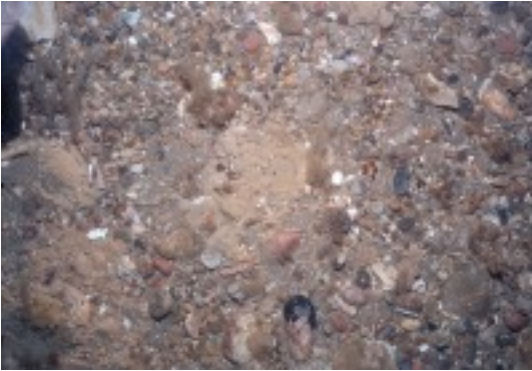


Image VB_GB1_36670063

Image VB_GB1_36670063. Small, expanding tunicate colonies of *Didemnum* sp. on pebble gravel habitat with hydroid colonies. Tunicate colony in center of image is on small patch of sand. Image height is 26 inches (66 cm). Station 311022 (41 deg 58.179 min N lat, 67 deg 31.848 min W lon). Northern Georges Bank. Water depth 43 m (141 ft). November 1, 2003. Collectors: Page Valentine, Jeremy Collie, Robert Reid. Photo credit: Page Valentine and Dann Blackwood, U.S. Geological Survey. [Location no. 4.](#)

[Click here to download image.](#)



Image VB_GB1_36670066

Image VB_GB1_36670066. Very small tunicate colonies of *Didemnum* sp. colonizing many pebbles. Hydroid colonies on pebble gravel habitat. Sea scallop is approximately 4 inches (10 cm) in diameter. Station 311022 (41 deg 58.179 min N lat, 67 deg 31.848 min W lon). Northern Georges Bank. Water depth 43 m (141 ft). November 1, 2003. Collectors: Page Valentine, Jeremy Collie, Robert Reid. Photo credit: Page Valentine and Dann Blackwood, U.S. Geological Survey. [Location no. 4.](#)

[Click here to download image.](#)



Image VB_GB1_36670069

Image VB_GB1_36670069. Small, expanding tunicate colonies of *Didemnum* sp. on pebble gravel habitat. Dark yellow sponge colony in left center of image. Image height is 20 inches (51 cm). Station 311022 (41 deg 58.179 min N lat, 67 deg 31.848 min W lon). Northern Georges Bank. Water depth 43 m (141 ft). November 1, 2003. Collectors: Page Valentine, Jeremy Collie, Robert Reid. Photo credit: Page Valentine and Dann Blackwood, U.S. Geological Survey. [Location no. 4.](#)

[Click here to download image.](#)



Image VB_GB1_36670092

Image VB_GB1_36670092. Tunicate colonies of *Didemnum* sp. completely covering pebble gravel habitat. Encrusted mussel shell in right center of image. Image height is 18 inches (46 cm). Station 311022 (41 deg 58.179 min N lat, 67 deg 31.848 min W lon). Northern Georges Bank. Water depth 43 m (141 ft). November 1, 2003. Collectors: Page Valentine, Jeremy Collie, Robert Reid. Photo credit: Page Valentine and Dann Blackwood, U. S. Geological Survey. [Location no. 4.](#)

Click here to [download image.](#)



Image VB_GB1_36670097

Image VB_GB1_36670097. Tunicate colonies of *Didemnum* sp. encrusting pebble gravel habitat and overgrowing hydroid colonies. Image height is 18 inches (46 cm). Station 311022 (41 deg 58.179 min N lat, 67 deg 31.848 min W lon). Northern Georges Bank. Water depth 43 m (141 ft). November 1, 2003. Collectors: Page Valentine, Jeremy Collie, Robert Reid. Photo credit: Page Valentine and Dann Blackwood, U.S. Geological Survey. [Location no. 4.](#)

Click here to [download image.](#)



Image VB_GB1_36670098

Image VB_GB1_36670098. Tunicate colonies of *Didemnum* sp. encrusting pebble gravel habitat. Along the right side of the image, tunicates can be observed overgrowing hydroids attached to the pebbles below. Image height is 12.5 inches (32 cm). Station 311022 (41 deg 58.179 min N lat, 67 deg 31.848 min W lon). Northern Georges Bank. Water depth 43 m (141 ft). November 1, 2003. Page Valentine, Jeremy Collie, Robert Reid. Photo credit: Page Valentine and Dann Blackwood, U. S. Geological Survey. [Location no. 4.](#)

Click here to [download image.](#)



Image VB_GB1_36680009

Image VB_GB1_36680009. Tunicate colonies of *Didemnum* sp. encrusting pebble gravel habitat and hydroid colonies. Image height is 18 inches (46 cm). Station 311022 (41 deg 58.179 min N lat, 67 deg 31.848 min W lon). Northern Georges Bank. Water depth 43 m (141 ft). November 1, 2003. Collectors: Page Valentine, Jeremy Collie, Robert Reid. Photo credit: Page Valentine and Dann Blackwood, U.S. Geological Survey. [Location no. 4.](#)

[Click here to download image.](#)



Image VB_GB1_36680013

Image VB_GB1_36680013. Tunicate colonies of *Didemnum* sp. encrusting pebble gravel habitat. Partly-encrusted sea scallop is 4 inches (10 cm) in diameter. Station 311022 (41 deg 58.179 min N lat, 67 deg 31.848 min W lon). Northern Georges Bank. Water depth 43 m (141 ft). November 1, 2003. Collectors: Page Valentine, Jeremy Collie, Robert Reid. Photo credit: Page Valentine and Dann Blackwood, U.S. Geological Survey. [Location no. 4.](#)

[Click here to download image.](#)



Image VB_GB1_36680014

Image VB_GB1_36680014. Tunicate colonies of *Didemnum* sp. completely covering pebble gravel habitat and surrounding hydroid colonies and a small burrowing anemone. Gastropod is approximately 4 inches (10 cm) long. Station 311022 (41 deg 58.179 min N lat, 67 deg 31.848 min W lon). Northern Georges Bank. Water depth 43 m (141 ft). November 1, 2003. Collectors: Page Valentine, Jeremy Collie, Robert Reid. Photo credit: Page Valentine and Dann Blackwood, U.S. Geological Survey. [Location no. 4.](#)

[Click here to download image.](#)



Image VB_GB1_36680015

Image VB_GB1_36680015. Tunicate colonies of *Didemnum* sp. advancing over pebble gravel habitat. Unaffected sea scallop is 3 inches (8 cm) in diameter. Station 311022 (41 deg 58.179 min N lat, 67 deg 31.848 min W lon). Northern Georges Bank. Water depth 43 m (141 ft). November 1, 2003. Collectors: Page Valentine, Jeremy Collie, Robert Reid. Photo credit: Page Valentine and Dann Blackwood, U.S. Geological Survey. [Location no. 4.](#)

[Click here to download image.](#)

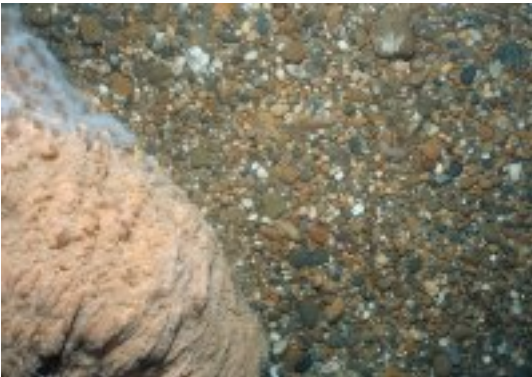


Image VB_GB1_36970016

Image VB_GB1_36970016. Tunicate colonies of *Didemnum* sp. encrusting a boulder on pebble gravel habitat. Tunicates surrounding and overgrowing attached anemones and grey sea pork (*Aplidium* sp.). Image height is 22 inches (56 cm). Station 311023 (42 deg 00.109 min N lat, 67 deg 32.449 min W lon). Northern Georges Bank. Water depth 41 m (135 ft). November 1, 2003. Collectors: Page Valentine, Jeremy Collie, Robert Reid. Photo credit: Page Valentine and Dann Blackwood, U.S. Geological Survey. [Location no. 5.](#)

[Click here to download image.](#)



Image VB_GB1_36970024

Image VB_GB1_36970024. Small, expanding colony of *Didemnum* sp. . Hydroid colony surrounded by tunicates. Pebble gravel habitat with small burrowing anemones. Image height is 25 inches (63 cm). Station 311023 (42 deg 00.109 min N lat, 67 deg 32.449 min W lon). Northern Georges Bank. Water depth 41 m (135 ft). November 1, 2003. Collectors: Page Valentine, Jeremy Collie, Robert Reid. Photo credit: Page Valentine and Dann Blackwood, U.S. Geological Survey. [Location no. 2.](#)

[Click here to download image.](#)



Image VB_GB1_36970026

Image VB_GB1_36970026. Very small colony of *Didemnum* sp. in upper right part of image to left of tan pebble. Pebble gravel habitat with small burrowing anemones. Image height is 20 inches (51 cm). Station 311023 (42 deg 00.109 min N lat, 67 deg 32.449 min W lon). Northern Georges Bank. Water depth 41 m (135 ft). November 1, 2003. Collectors: Page Valentine, Jeremy Collie, Robert Reid. Photo credit: Page Valentine and Dann Blackwood, U.S. Geological Survey. [Location no. 5.](#)
[Click here to download image.](#)



Image VB_GB1_36970034

Image VB_GB1_36970034. Small, expanding colony of *Didemnum* sp. on pebble gravel habitat. Hydroid colony surrounded by tunicates. Small burrowing anemones present. Sea scallop is approximately 4 inches (10 cm) in diameter. Two clam siphons above sea scallop in image. Station 311023 (42 deg 00.109 min N lat, 67 deg 32.449 min W lon). Northern Georges Bank. Water depth 41 m (135 ft). November 1, 2003. Collectors: Page Valentine, Jeremy Collie, Robert Reid. Photo credit: Page Valentine and Dann Blackwood, U.S. Geological Survey. [Location no. 5.](#)
[Click here to download image.](#)



Image VB_GB1_36970035

Image VB_GB1_36970035. Very small tunicate colonies on hydroids in lower left center of image and in upper left center of image. Pebble gravel habitat with attached hydroids and small burrowing anemones. Image height is 19 inches (48 cm). Station 311023 (42 deg 00.109 min N lat, 67 deg 32.449 min W lon). Northern Georges Bank. Water depth 41 m (135 ft). November 1, 2003. Collectors: Page Valentine, Jeremy Collie, Robert Reid. Photo credit: Page Valentine and Dann Blackwood, U.S. Geological Survey. [Location no. 5.](#)
[Click here to download image.](#)



Image DB_GB5_03015041

Image DB_GB5_03015041. Tunicate colony of *Didemnum* sp. encrusting the calcareous tubes of the colonial worm *Filograna implexa*. The tunicate colony is contracted. White bar is 2 centimeters (0.8 inches). Station 311024 (41 deg 57.439 min N lat, 67 deg 31.160 min W lon). Northern Georges Bank. Water depth 45 m (148 ft). November 1, 2003. Collectors: Jeremy Collie, Page Valentine, Robert Reid. Photo credit: Dann Blackwood, U.S. Geological Survey. [Location no. 6.](#)

[Click here to download image.](#)



Image DB_GB5_03015035

Image DB_GB5_03015035, tunicate colony of *D. sp.* encrusting a mussel shell. Tunicate colony of *Didemnum* sp. encrusting a mussel shell. The long rope-like extensions possible encrust organisms such as hydroids that commonly attach to shells. The tunicate colony is contracted. White bar is 2 centimeters (0.8 inches). Station 311024 (41 deg 57.439 min N lat, 67 deg 31.160 min W lon). Northern Georges Bank. Water depth 45 m (148 ft). November 1, 2003. Collectors: Jeremy Collie, Page Valentine, Robert Reid. Photo credit: Dann Blackwood, U.S. Geological Survey. [Location no. 6.](#)

[Click here to download image.](#)



Image DB_GB6_0301548a

Image DB_GB6_0301548a. Tunicate colonies of *Didemnum* sp. encrusting a naturalist dredge sample of pebble gravel and shell material. Note the tunicate appendages on the mussel shell in the left center part of the photo. The tunicate colonies are contracted. Station 311032 (41 deg 57.19 min N lat, 67 deg 31.080 min W lon). Northern Georges Bank. Water depth 47 m (154 ft). November 1, 2003. Collectors: Jeremy Collie, Page Valentine, Robert Reid. Photo credit: Dann Blackwood, U.S. Geological Survey. [Location no. 7.](#)

[Click here to download image.](#)



Image DB_GB6_0301548b

Image DB_GB6_0301548b. Tunicate colonies of *Didemnum* sp. encrusting a naturalist dredge sample of pebble gravel. The encrusted sea scallop is approximately 5 inches (13 cm) in diameter. Station 311032 (41 deg 57.19 min N lat, 67 deg 31.080 min W lon). Northern Georges Bank. Water depth 47 m (154 ft). November 1, 2003. Collectors: Jeremy Collie, Page Valentine, Robert Reid. Photo credit: Dann Blackwood, U.S. Geological Survey. [Location no. 7.](#)

[Click here to download image.](#)

[Back to Top](#)



To view files in PDF format, download free copy of [Adobe Reader](#).

[Accessibility](#) [FOIA](#) [Privacy](#) [Policies](#) and [Notices](#)

[U.S. Department of the Interior](#) | [U.S. Geological Survey](#)

URL: donnewdtxp.whsc.er.usgs.gov/drafts/PDF-project-pages/PDF-stellwagen/PDF-didemnum/htm/page7.htm

Page Contact Information: webmaster-woodshole@usgs.gov

Page Last Modified: Thursday, 28-Jun-2007 09:36:16 Eastern Daylight Time

