

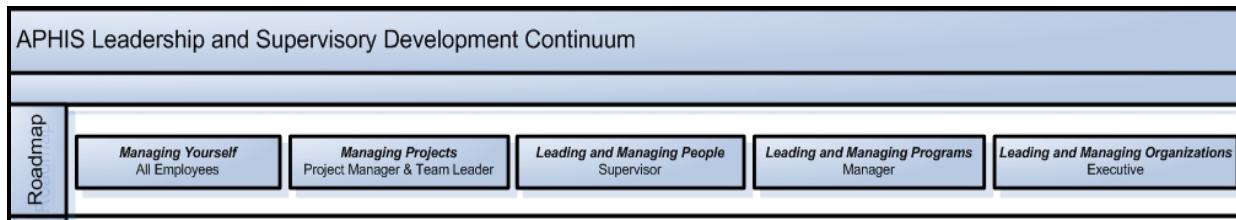
APHIS LEADERSHIP AND SUPERVISORY DEVELOPMENT CONTINUUM

As noted in the report, the creation of an APHIS Leadership and Supervisory Development Continuum is one of the team’s main recommendations. The continuum would serve as a reference for linking leadership programs/curricula to the agency’s strategic goals and the APHIS Leadership Roadmap. The entire continuum is on page E-3.

Organization of the APHIS Leadership and Supervisory Development Continuum

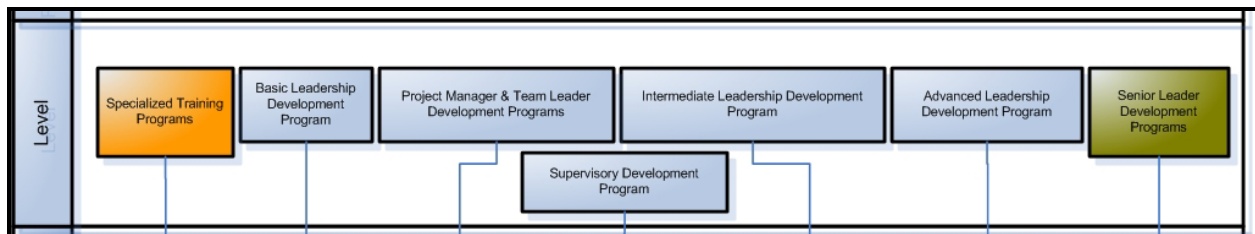
Section 1

The first section of the continuum provides alignment to the levels of APHIS Leadership Roadmap as shown.



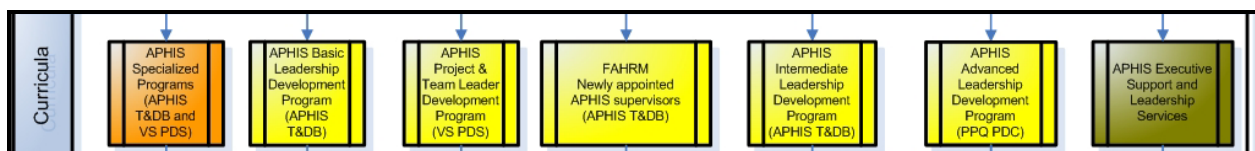
Section 2

The second section of the continuum establishes levels of leadership programs which recognize the need for progressive competency and skill development at every employee level.



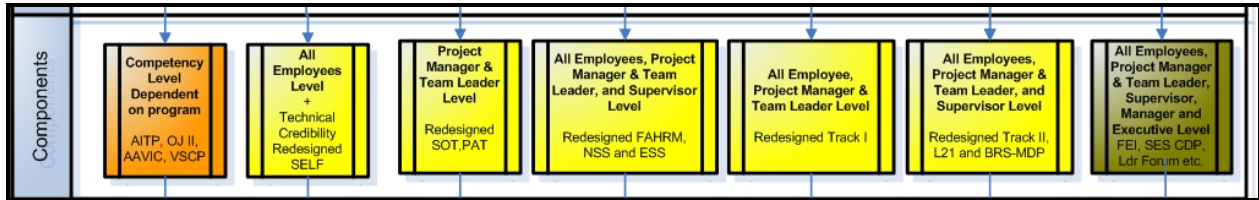
Section 3

The third section of the continuum lists the training unit which has been tasked with the program(s). The training unit would serve as the main contact for the program, but the other training units would collaborate in design, development, delivery, and evaluation.



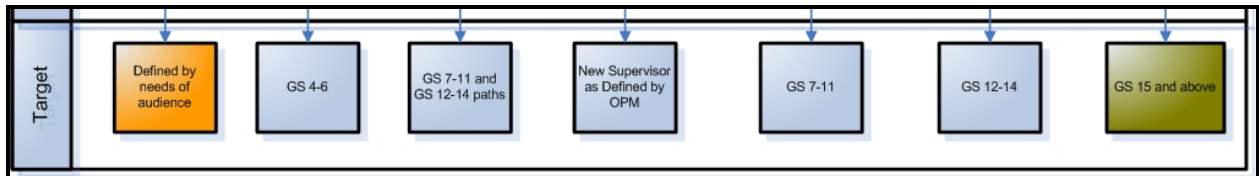
Section 4

The fourth section of the continuum details the components of each program including the revised leadership programs/curricula.

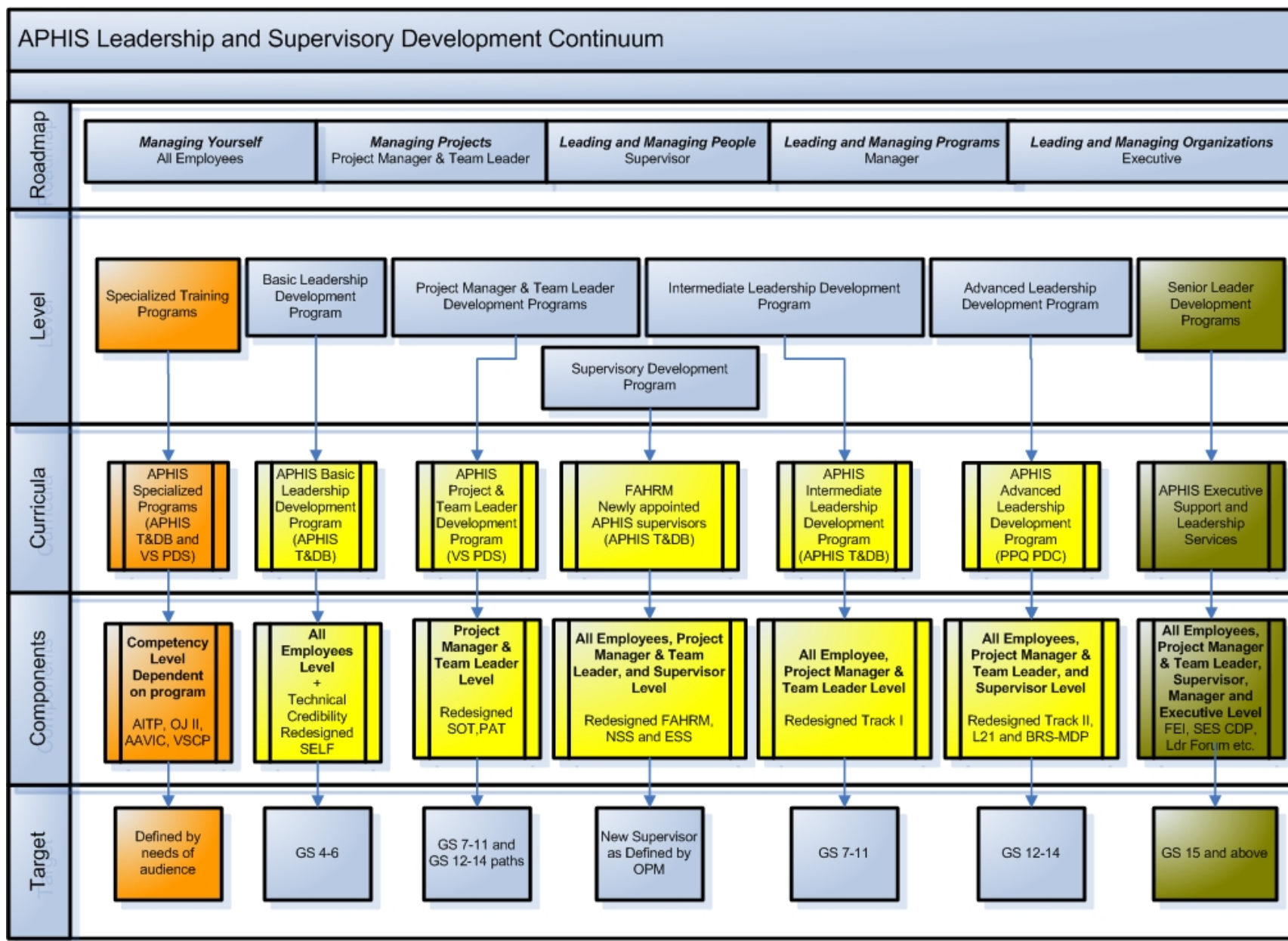


Section 5

The final section of the continuum defines the target audience for each program as listed in the Components level.



Appendix E: APHIS Leadership and Supervisory Development Continuum



This page was intentionally left blank.