



# Mohave County Concerns

What Now?

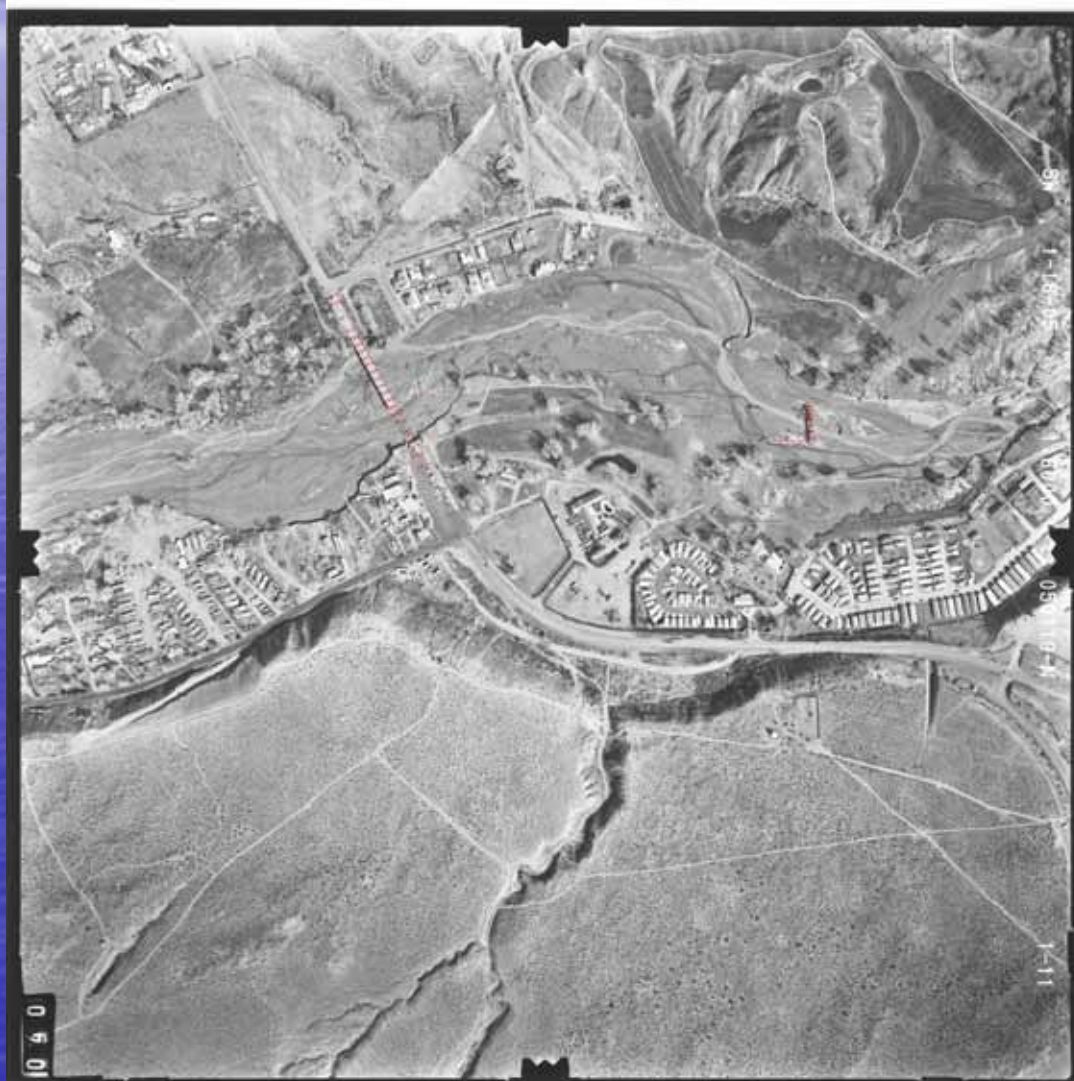
# What Happened to US?

- Before/After
- Walls and Blinders
- Hwy 91 Bridge
- Development Pressure
- Data Needs

# Spring 2004



# After the Storm



# Beaver Dam Today



January 2005



# Walls and Blinders



# Concerns

- Future Flood Hazards
- Development Pressure
- Sediment Transport
- Buyout Programs?
- Who's Got the Data?



# How High?



# PAR What?





Who's Got the Data?