



Academic Advising

Associate Dean for Academic Affairs

Dr. Frederic I. Davis

(fid)

Academic Advising

- Degree Requirements
- Advising - Organization
- Plebe and Majors Advising
- PreRegistration and Registration
- Academic and Advisory Boards
- Summer School
- Information Sources
- Use of MIDS and Web

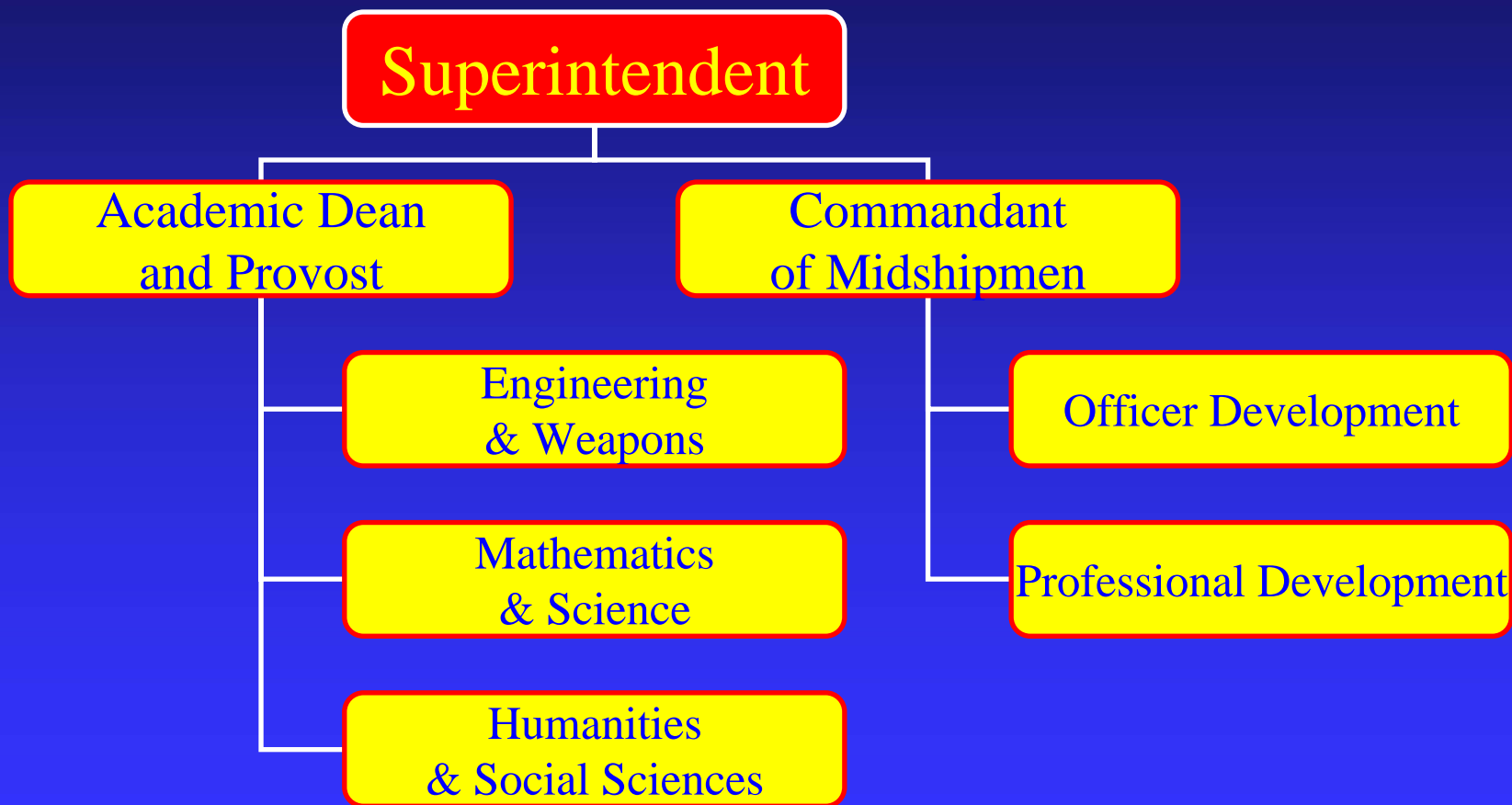
Degree Requirements



For degree (B.S.) and commission:

- a. Complete a major.
- b. 137+ , core, division, 2.00+.
- c. Achieve standards in summer training.
- d. Achieve standards in aptitude, physical education, honor, conduct.
- e. Accept a commission, if offered.
- f. Major designated if MCQPR is 2.00+.

Divisions



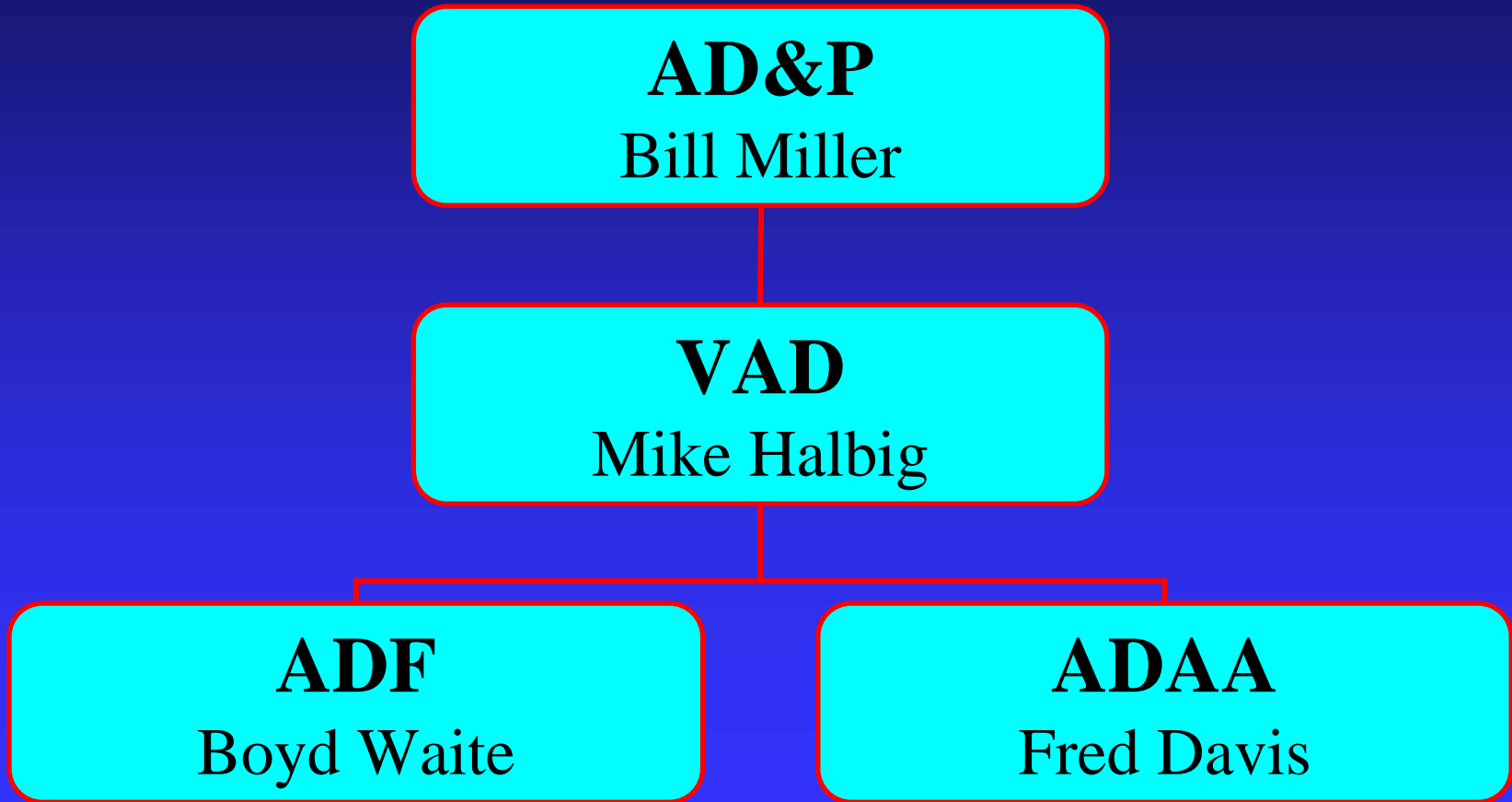
Dean's Office

AD&P
Bill Miller

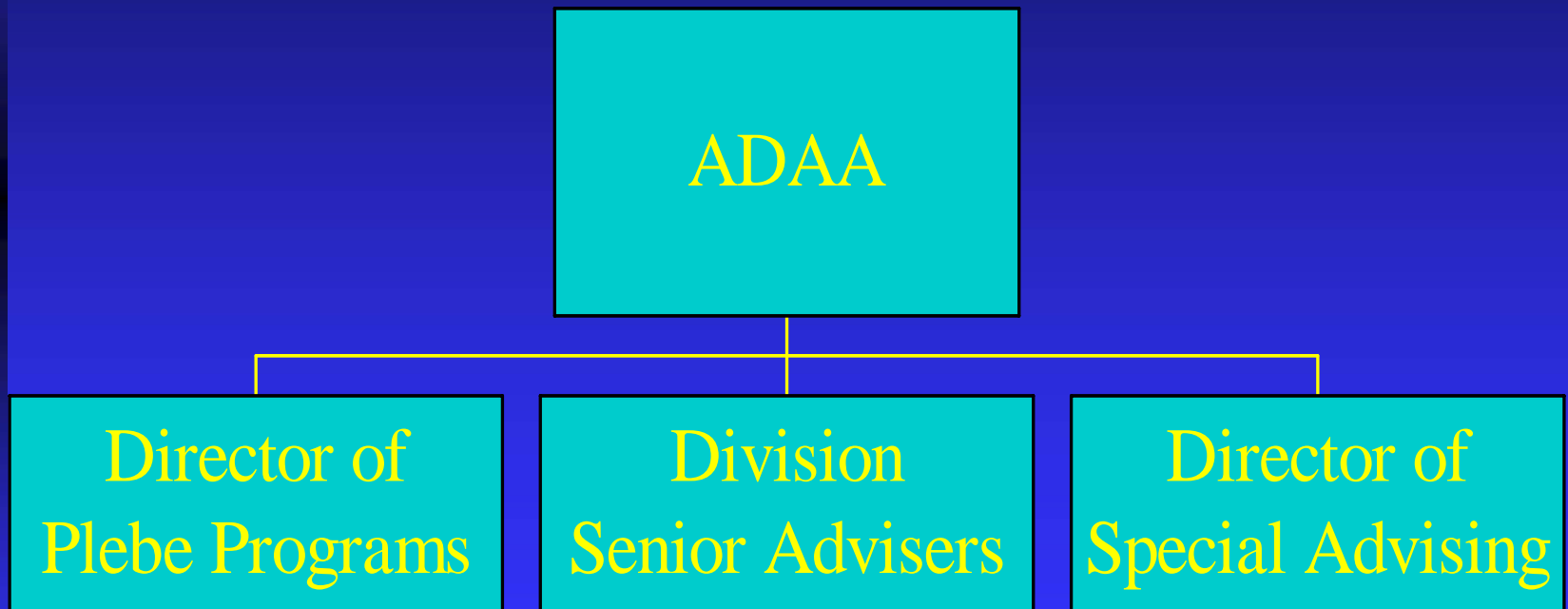
VAD
Mike Halbig

ADF
Boyd Waite

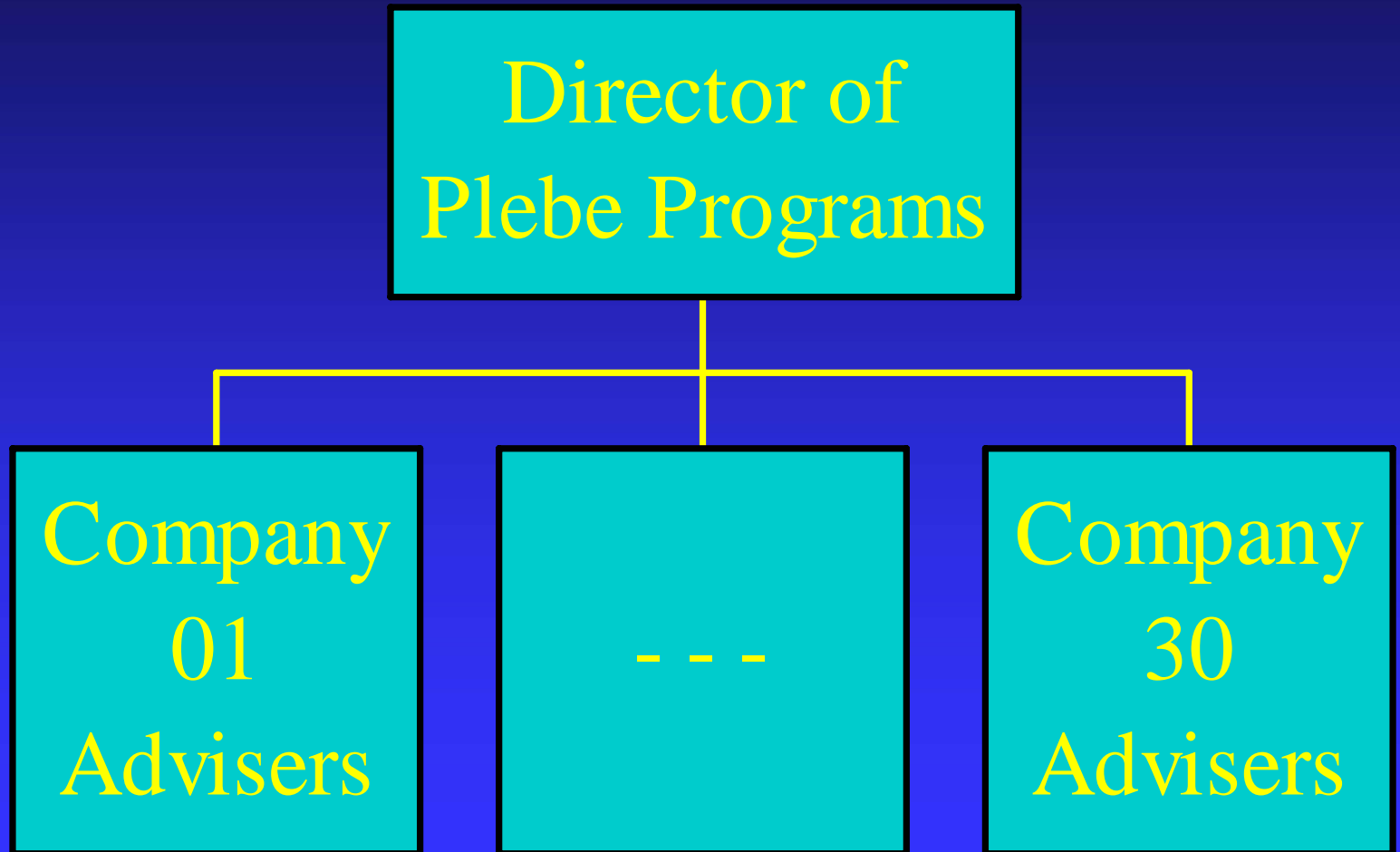
ADAA
Fred Davis



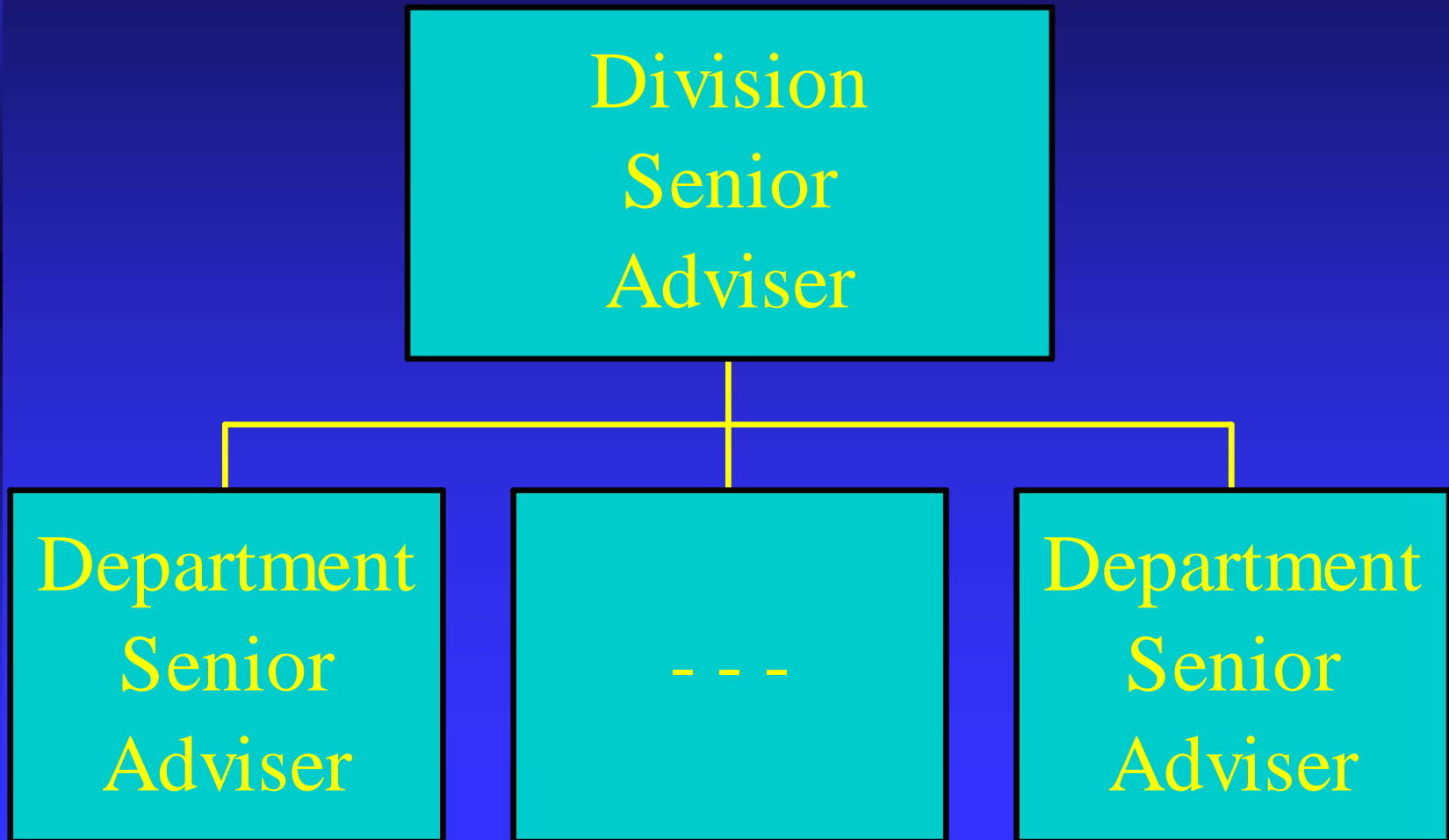
Advising - Organization



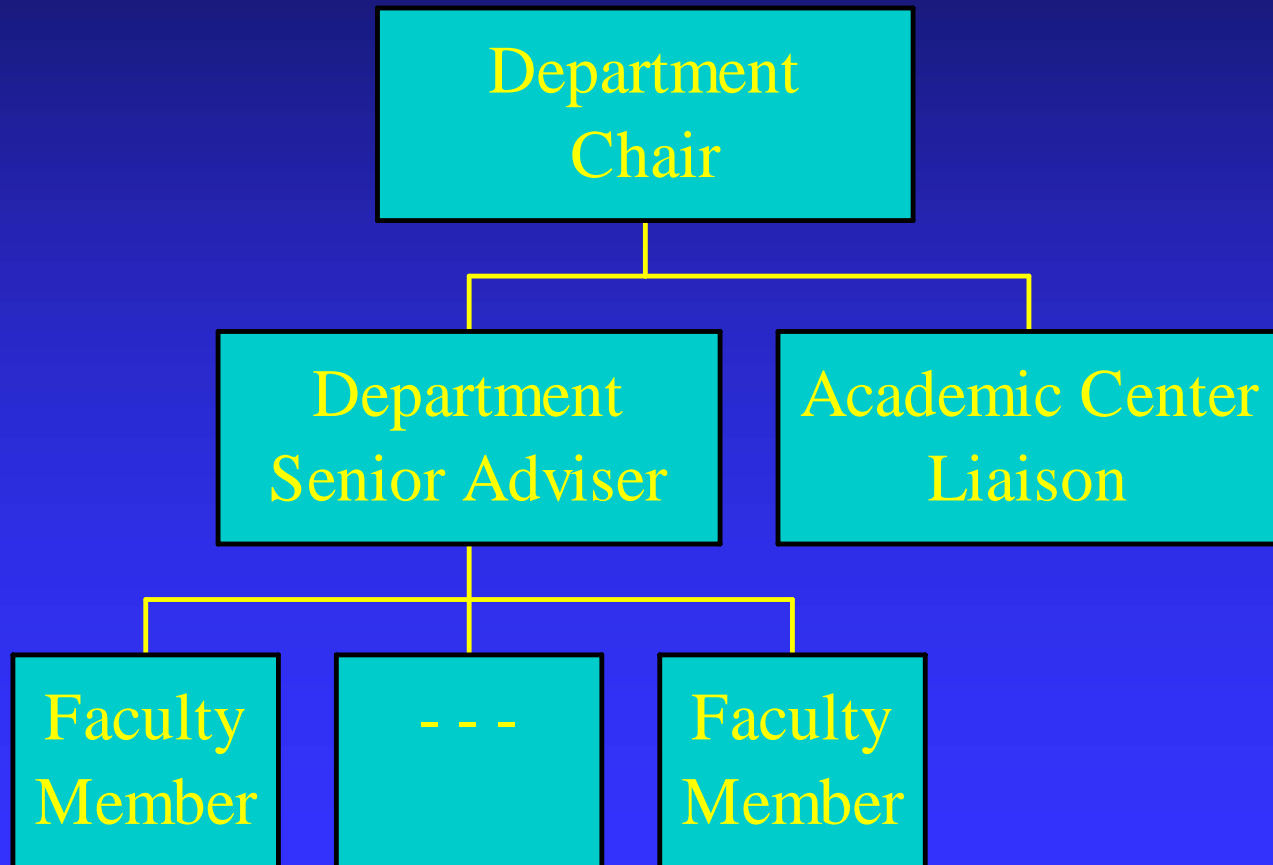
Advising - Organization



Advising - Organization



Advising - Organization



Plebe Advising

Fall	Spring
NS101 Seamanship 1-2-2	NN101 Navigation 1-2-2
	NL110 Leadership 1 2-0-2
SM121 Calculus 1 4-0-4	SM122 Calculus 2 4-0-4
SC111 Chemistry 1 3-2-4	SC112 Chemistry 2 3-2-4
HE111 English 1 3-0-3	HE112 English 2 3-0-3
FP130 U.S. Gov 3-0-3	HH104 Naval Hist 3-0-3

Plebe Advising

Advisers (2 per company):

- Introduce academic program
- Study skills & time management
- Advise company officers
- Preregister for spring semester
- Counsel on major selection
 - > Special adviser for high validators <
 - > Special adviser for 'at risk' plebes <

Majors

Engineering & Weapons

- EAS, EASA
- EEE
- EGE
- EME
- ENA
- EOE
- ESE, ESEH

Mathematics & Science

- SCH
- SCS, SIT
- SGS
- SMA, SMP, SMAH, SMPH
- SOC, SOCH
- SPH, SPA, SPAA
- SQE

Humanities & Social Sciences

- FEC, FECH

- FLA, FLC

- FPS, FPSH

- HEG, HEGH

- HHS, HHSH

- FA, FC, FF, FG

FJ, FR, FS

Core

Upper Class Core Courses

■ Professional

Navigation: NN200

Ethics: NE203

Naval Warfare: NS300

Leadership: NL310

Law: NL400

Practicum: NS42x (x = 1, 2, 3, 4, ...)

Upper Class Core/Div Courses

■ Mathematics and Science

Calculus III: SM221 or SM223

Differential Equations: SM212 or SM222

or

Probability and Statistics: SM230 or SM239

Physics: SP211 + SP212

or

SP221 + SP222 + SP226

Upper Class Core/Div Courses

- Humanities and Social Sciences

West in Global Context: HH215 (HH2XY)

West in Modern World: HH216

2 electives in Humanities or Social Science

1 at 300+ level

Chosen from approved courses in:

Economics, English, History,

Language Studies, Law, Leadership,

Philosophy, Political Science,

Psychology

Upper Class Core/Div Courses

- Engineering

EE I: EE301 or EE331

EE II: EE302 or EE332/4

EA400 (aka *Planes*) – for non-ABET

or EN400 (aka *Boats*) – for non-ABET

or EN401 (aka *Ground*) – for non-ABET

EM300 (aka *Steam*) – for non-ABET

ES300

ES360 (controls lab)

- Free or MSE Elective

Matrices

An Engineering Major

Third Class		Second Class		First Class	
Fall	Spring	Fall	Spring	Fall	Spring
Nav	Ethics	Nav Warfare	Leadership	Law	JO Practic
Calculus	Diff Eqns	EE	EE	Wpns	Control Sys
Physics	Physics				
W Civiliz	W Civiliz		H&SS Elec		H&SS Elec
Major	Major	Major	Major	Major	Major
Major	Major	Major	Major	Major	Major
		Major	Major	Major	Major
		Major			

A Mathematics-Science Major

Third Class		Second Class		First Class	
Fall	Spring	Fall	Spring	Fall	Spring
Nav	Ethics	Nav Warfare	Leadership	Law	JO Practic
Calculus	Diff Eqns	EE	EE	Wpns	Elective
Physics	Physics				Wpns lab
W Civiliz	W Civiliz	H&SS Elec			H&SS Elec
			Ship Propul	Ship Perfor	
				Controls Lab	
Major	Major	Major	Major	Major	Major
Major	Major	Major	Major	Major	Major
		Major	Major		Major

A Humanities-Social Science Major

Third Class		Second Class		First Class	
Fall	Spring	Fall	Spring	Fall	Spring
Nav	Ethics	Tactics	Leadership	Law	JO Practic
Calculus	Prob & Stat	EE	EE	Wpns	Elective
Physics	Physics				Wpns lab
W Civiliz	W Civiliz	H&SS Elec			H&SS Elec
			Ship Propul	Ship Perfor	
Language	Language	Language	Language	Controls Lab	
Major	Major	Major	Major	Major	Major
		Major	Major	Major	Major
				Major	

Majors Advising

- Track academic progress
- Counsel on selection of courses at pre-registration, make adjustments to registration, as necessary
- Advise about special opportunities

PreRegistration & Registration

- Pre-registration:
 - ◆ midshipman academic planning
 - ◆ academic planning-allocation of faculty and facilities
 - ◆ midshipmen select courses
- Registration:
 - ◆ midshipmen choose schedules and instructors
 - ◆ populates sections

Academic Board

- Statutory authority
- Supe + Dean + Dant + 4 DivDirs
- Dean of Admissions and others present
- convenes at end of academic terms
- decides to retain/separate “deficient” midshipmen
- information available, influential factors

Advisory Board

- ADAA + DivSrAdvrs + AcCntrAdvrs
- convenes with Academic Board
- “fixes” midshipmen retained by Academic Board, single failures, low CQPRs, changes of major
- advises Academic Board on midshipman prospects for recovery

Summer School

- 12 weeks = 3 blocks of 4 weeks each
- Memorial Day until fall semester
- ~ 600 midshipmen, ~ 700 courses
- remediation
- getting ahead
- CQPR but not OOM affected
- status (mandatory, voluntary, ...)
- but, first ... summer training

Information Sources

- **AcDean:** www.usna.edu/acdean
- **MIDS:** www.usna.edu/MIDS
- **WebI:** adhoc.usna.edu/wi/
- **ADAA, Chairs, Senior Advisers**
- **Academic Program**
- **Majors Program**
- **Bancroft Hall phones**
 - ◆ 3-51wd Wing “w” Deck “d” Mate
 - ◆ 3-8bcc Company “cc” Sr Enlisted
 - ◆ 3-7bcc Company “cc” Officer
 - ◆ 3-7b00 Battalion “b” Officer

Ex Scientia Tridens

