

Robotic Systems Joint Project Office



**Project Managers Briefing
7 November 2007**

Paul Varian - CIV USA AMC [paul.varian@us.army.mil]
JRRF Manager

Represented by

Gerald C. Perlmutter (Avantix)
Barry W. Jones (NGC)



Approaches to Logistics

Yesterday (Mass-Based)



- More is better
- Mountains of stuff measured in days of supply
- Uses massive inventory to hedge against uncertainty in demand and supply
- Mass begets mass and slows everything down

Prime Metric:
Days of Supply

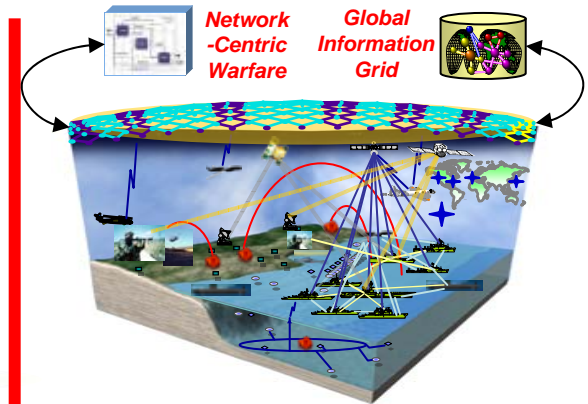
Today (Just-in-Time)



- On-time is better
- Inventory is reduced to a minimum and kept moving
- Uses precise demand prediction and static optimization to purge uncertainty
- Works great, except when it doesn't

Prime Metric:
Flow Time

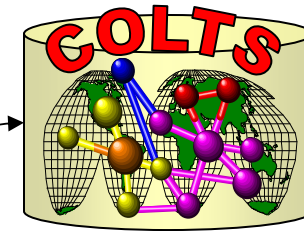
Tomorrow (Sense and Respond)



- Adaptive is better
- Inventory is dynamically positioned throughout
- Uses transportation flexibility and robust IT to handle uncertainty
- Initial S&R models look promising
- Supports distributed, adaptive ops

Prime Metric:
Speed/Quality of Effects

Today's RS JPO approach tomorrow's Logistics Knowledge-enabled, demand driven Sense and Respond



Global Information

Work Order, TM and history quarry of all data provides a real-time knowledge-based environment

Interoperable joint communications to the tactical level

IUID / RFID + COLTS = TAV

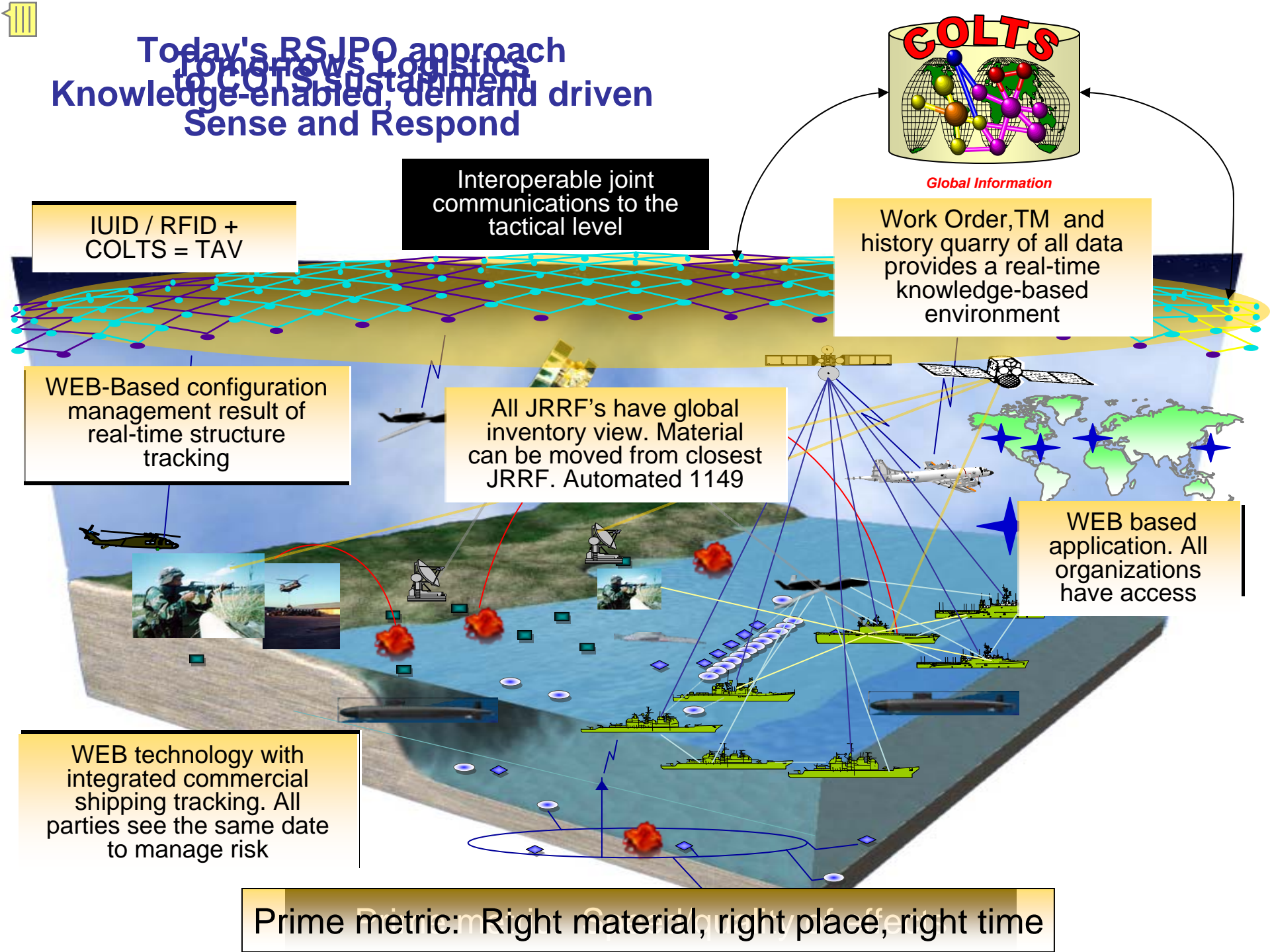
WEB-Based configuration management result of real-time structure tracking

All JRRF's have global inventory view. Material can be moved from closest JRRF. Automated 1149

WEB based application. All organizations have access

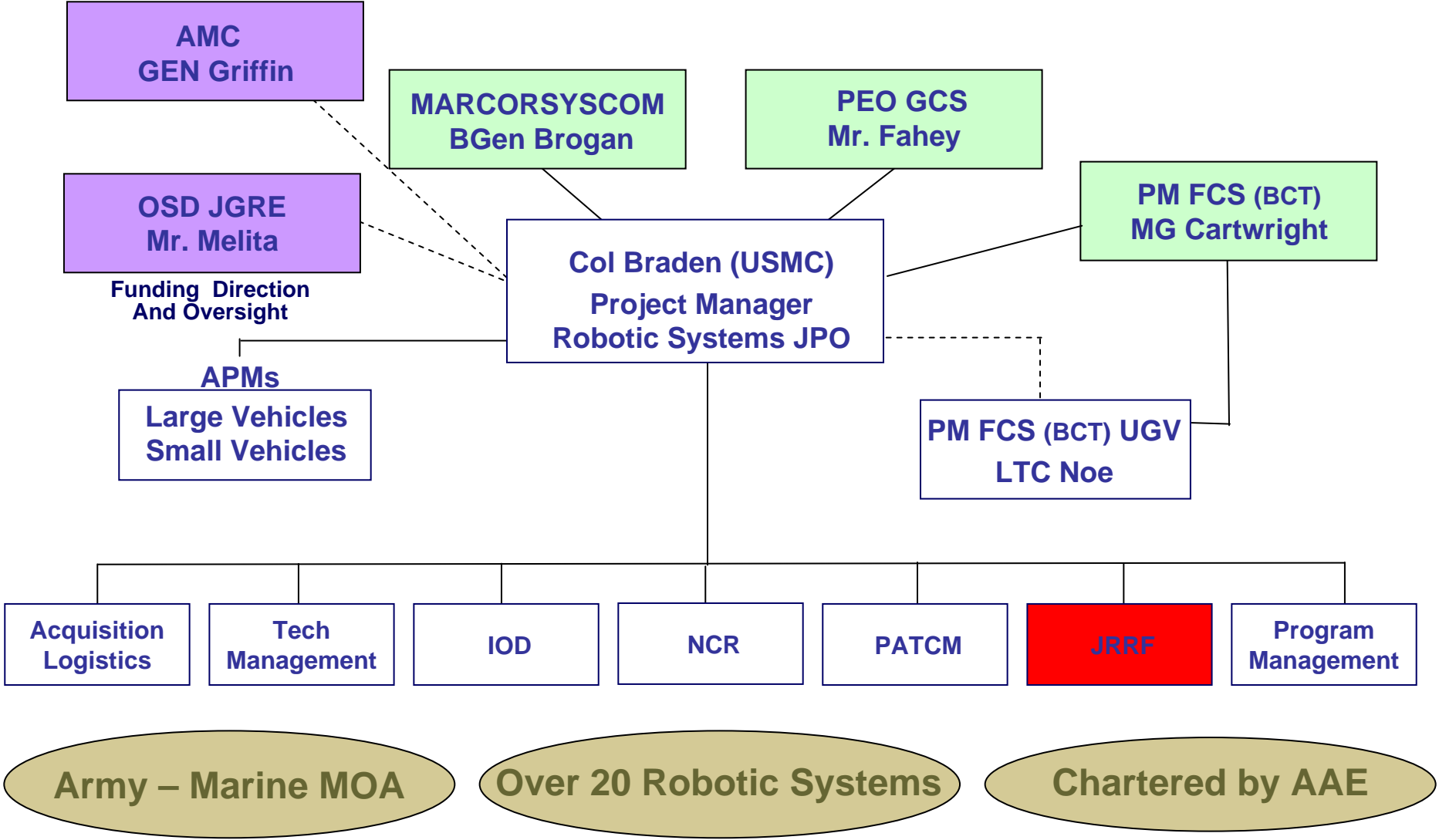
WEB technology with integrated commercial shipping tracking. All parties see the same data to manage risk

Prime metric: Right material, right place, right time



Who we are

RS JPO Organization / Relationships



AMC
GEN Griffin

MARCORSYSCOM
BGen Brogan

PEO GCS
Mr. Fahey

PM FCS (BCT)
MG Cartwright

OSD JGRE
Mr. Melita

Col Braden (USMC)
Project Manager
Robotic Systems JPO

Funding Direction
And Oversight

APMs

Large Vehicles
Small Vehicles

PM FCS (BCT) UGV
LTC Noe

Acquisition
Logistics

Tech
Management

IOD

NCR

PATCM

JRRF

Program
Management

Army – Marine MOA

Over 20 Robotic Systems

Chartered by AAE



JRRF Mission

Provide in-Theater Support for Joint Service Theater Provided Equipment (TPE) Ground Robots. Serve as Single “Belly Button” for OIF/OEF Training, Sustainment, Assessment, and Accountability.

Three Support Areas:

- 1 - Current JRRF Operations
- 2 – Joint Robot Repair Teams to Remote Users MTT’s
- 3 - Pre-Deployment Training and Support Capability

Alignment

- CENTCOM Strategy
- AMC Tasking
- JARB Guidance

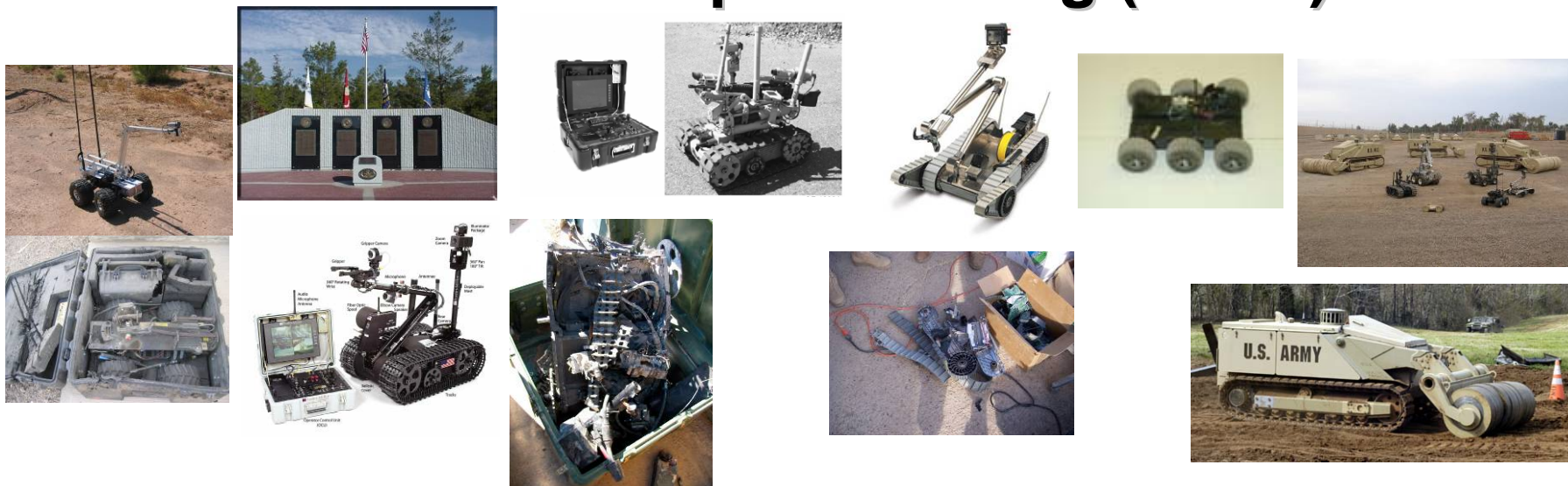
2006 Measures of Effectiveness (OIF)

# of Missions	# of Found & Cleared IEDs	# of Destroyed Robots
30,000	11,100	150



- **16,000 Robot Repairs Conducted Annually**
- **Find and Clear Rate is Approximately 37%**
- **SOP is to Employ a Ground Robot first**
- **Bomb Suits Only used When Terrain Prevents Robot Employment**

Joint Robot Repair Fielding (JRRF)



- **Single “Belly Button” for In-Theater Sustainment & Accountability**
 - 162 Bots (2004) - 1800 Bots (2005) - 4300 bots (Now) - 6000+ est'd (2008)
- **Pre-Deployment Training Sites JRRTs and Mobile Training Teams – *Joint Reserves (61%)***
- **4 Hour Robot Turn-Around Standard – *Leveraging “Joint Float Pool Concept”***
- **Web-Accessible Supply Chain Management Started – *To Provide Global Visibility***
 - Accountability - Parts Reordering - Reliability Tracking - Trouble Desk Info

“One-Stop-Shop”
for Spiral
Ground Robots

Thousands
of Missions / Hundreds of
Lives Saved!

Credible, Capable, Cost Effective



What we do

- New technology insertion
 - Filling the “gap” between need it now and programs of record.



JRRF-Iraq (Camp Victory)





How we do it ?



It's all about Performance Based Logistics (PBL)

The Current (DAU) Definition:

PBL primary tenets are documentation of WAR-FIGHTER performance requirements as measurable metrics.

A fraction of the measurable metrics:

Operational Availability, Operational Reliability, Cost per Unit Usage, Total life cycle cost, Logistics Footprint, Logistics Response Time,

YADA, YADA, YADA



What Joint Robotics Repair Facility Is Doing

1. Define the WAR-FIGHTER : As the private or crew member in the heat of it.

2. Understand what is important to the (war-fighter) private or crew member:

Time

Equipment that works

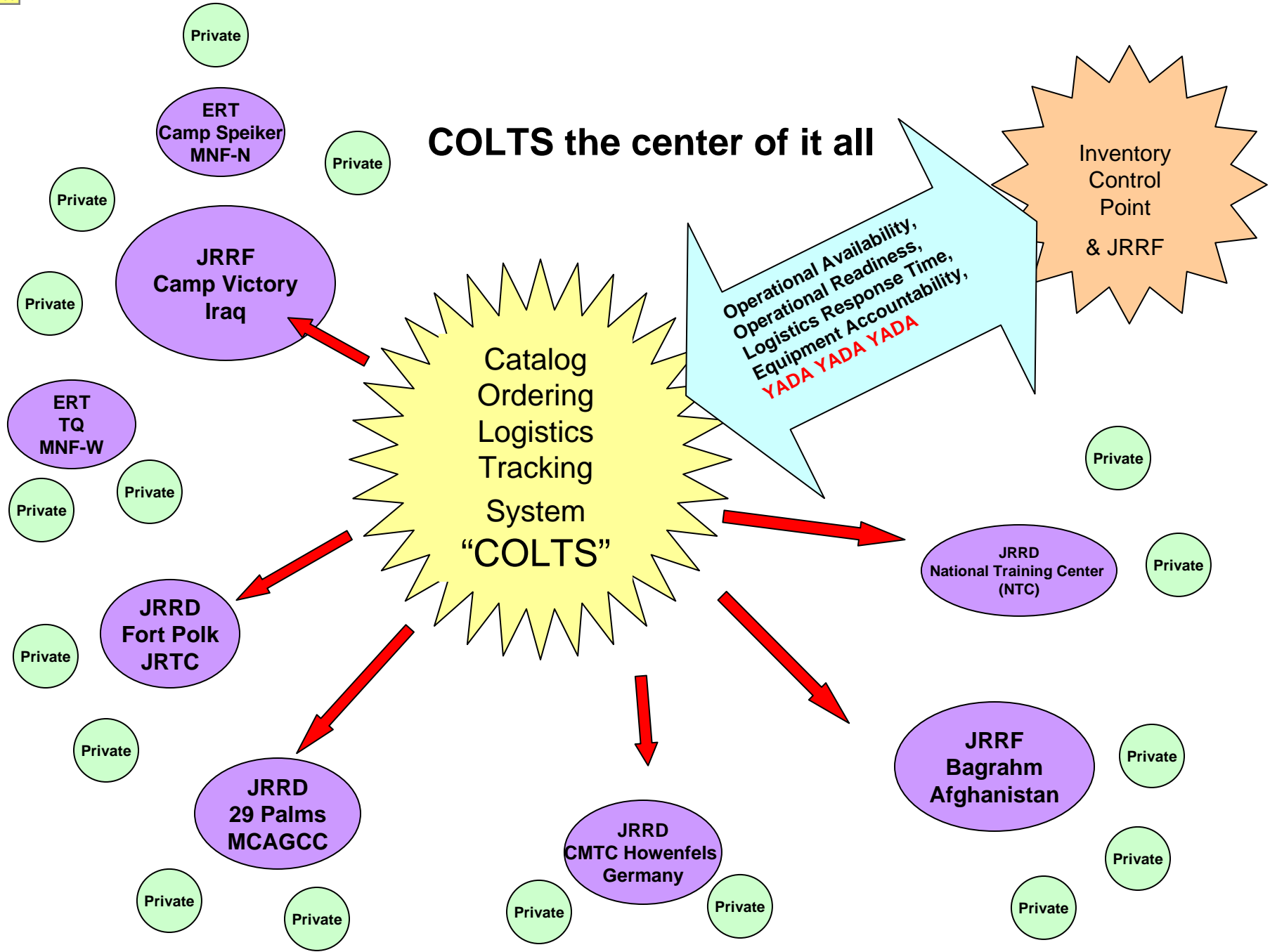
Time

3. Define PBL in a term the private or crew member understands.

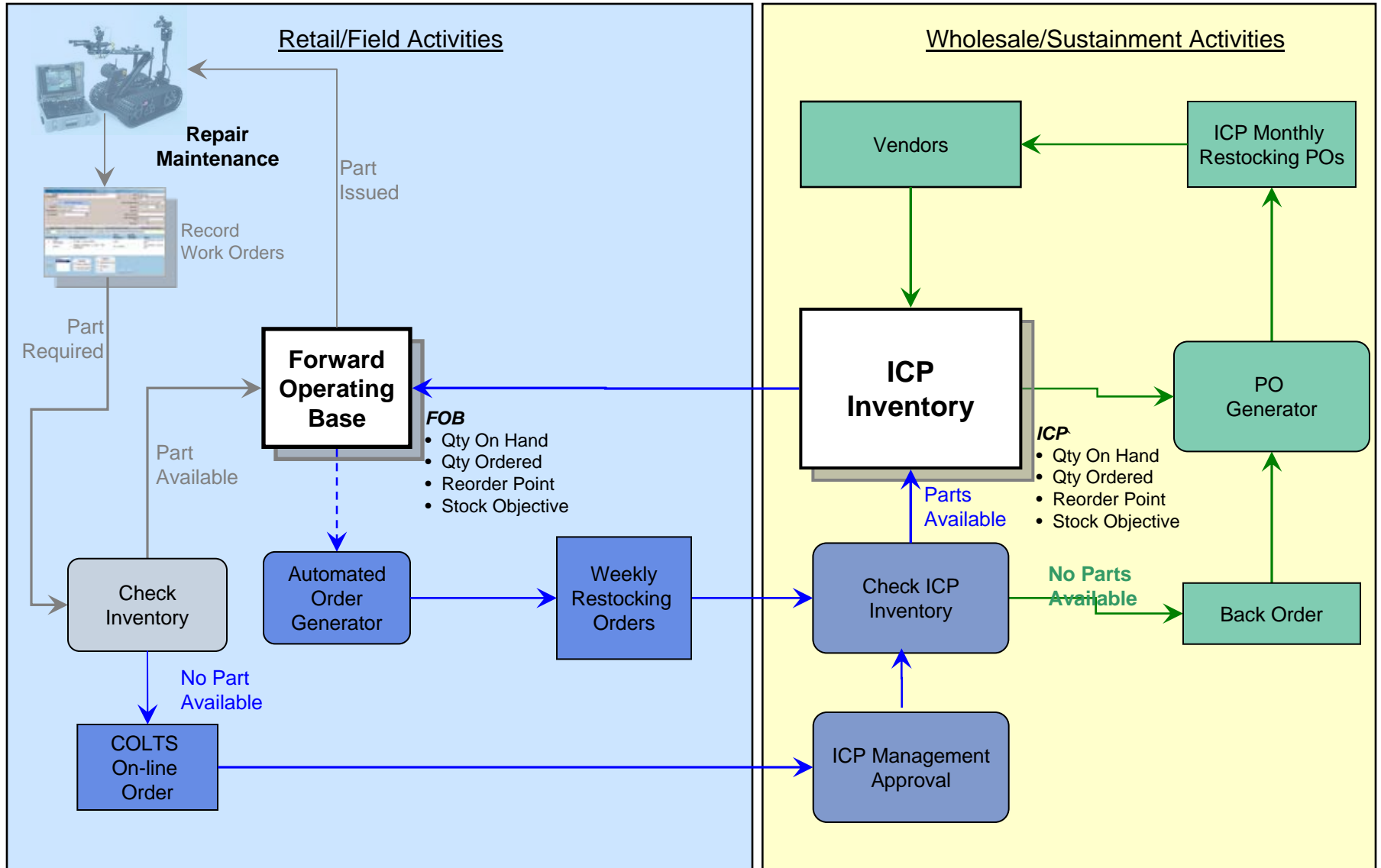
We structure our support to be reactive to the private or crew member in the heat of it. He receives a robot in 4 hours or less PERIOD



COLTS the center of it all



COLTS Supply Chain Overview





Robotic Systems Joint Project Office

Supply Chain Management (SCM)

**Catalog Ordering Logistics Tracking System
(COLTS)**

And Item Unique Identification (IUID)

Don't just generate the data

USE THE DATA