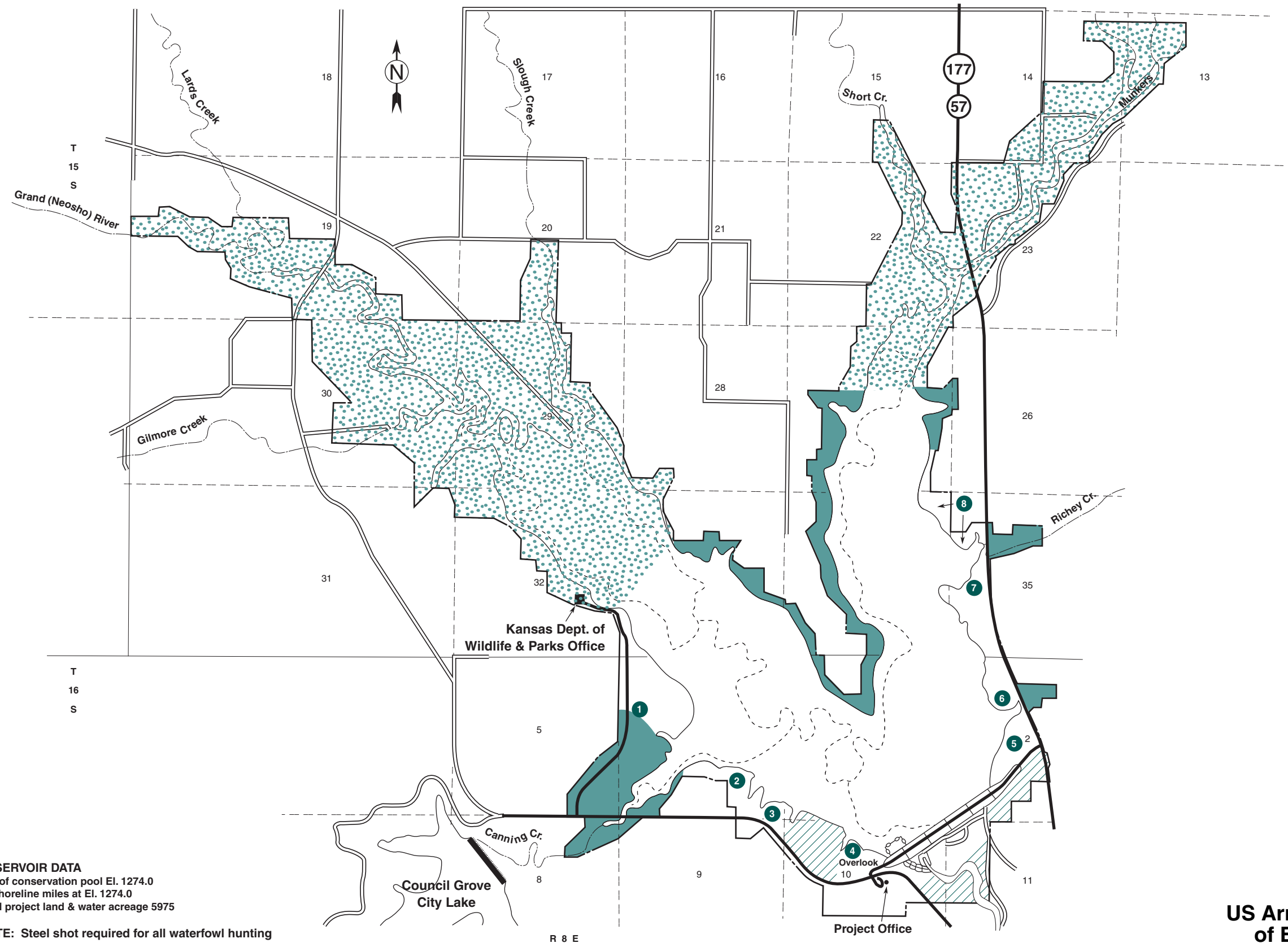


COUNCIL GROVE LAKE

PUBLIC HUNTING AREA



PUBLIC USE AREAS

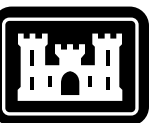
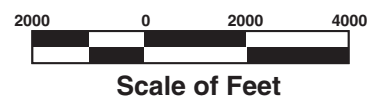
- 1 Canning Creek Cove
- 2 Santa Fe Trail
- 3 Marina Cove
- 4 Neosho Park
- 5 Kansa View
- 6 Kit Carson Cove
- 7 Richey Cove
- 8 Custer Park

LEGEND

- Paved Road
- Improved Road
- Dirt Road
- Project Boundary
- Corps Areas Open For Hunting
- State Areas Open For Hunting
- Archery, Shotgun, & Primitive Firearms Only

RESERVOIR DATA
 Top of conservation pool El. 1274.0
 40 shoreline miles at El. 1274.0
 Total project land & water acreage 5975

NOTE: Steel shot required for all waterfowl hunting



US Army Corps of Engineers
 Tulsa District