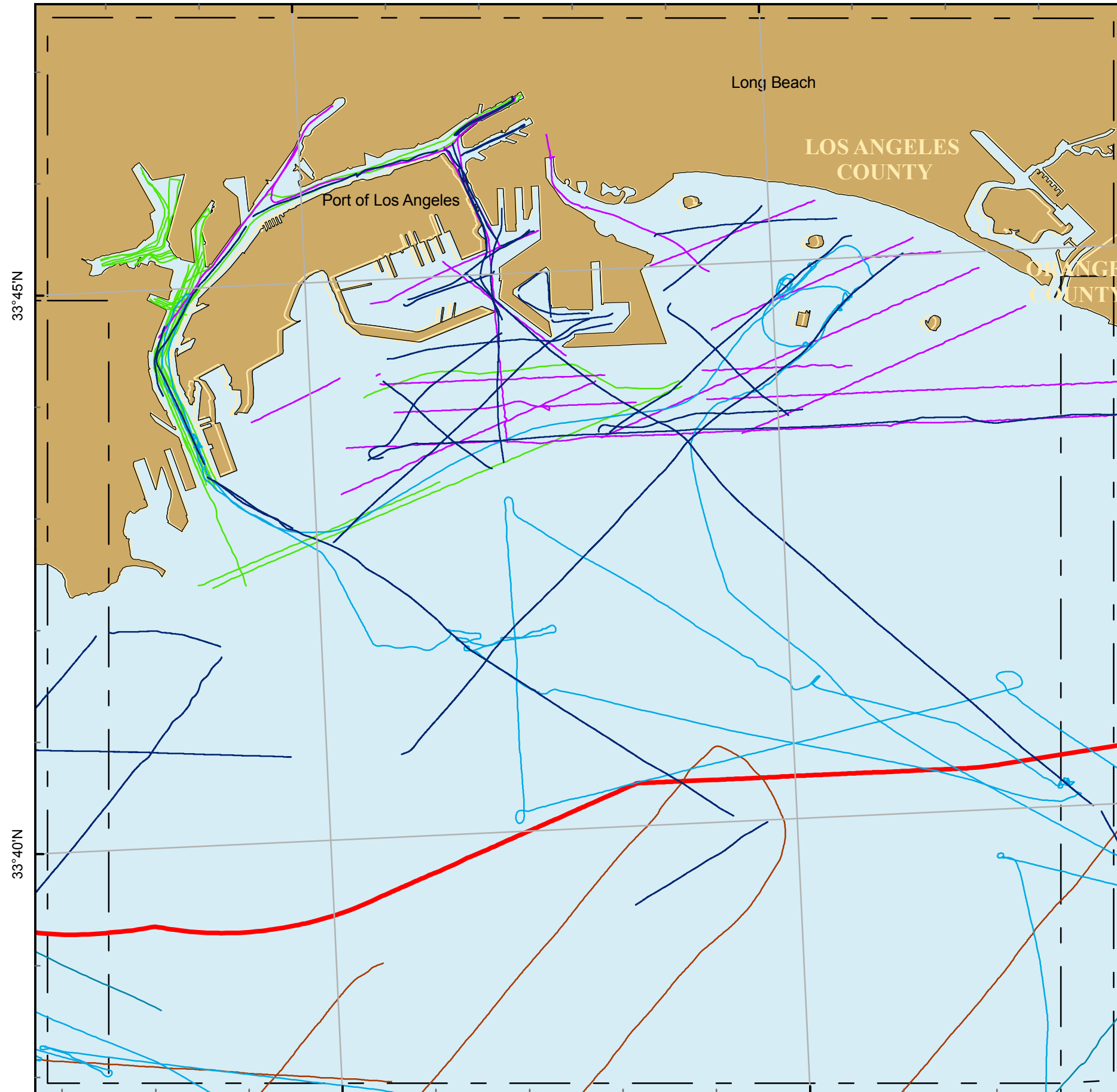


118°15'W

118°10'W



Block 74 C



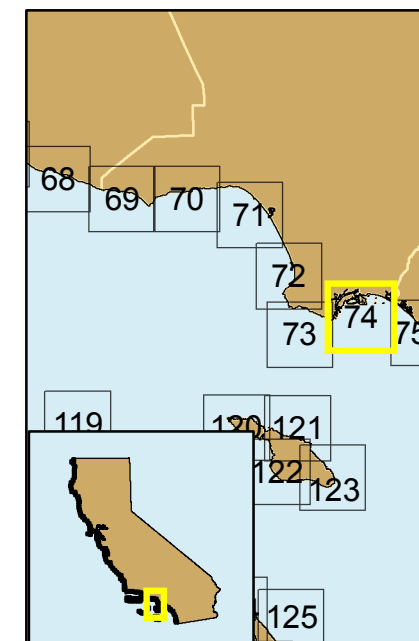
33°45'N

33°40'N

Projection: UTM Zone 10 Datum: WGS84 Map Scale: 1:75,000

Seismic Reflection Data in California State Waters Block 74 C

- A-1-00-SC
- A-1-03-SC
- A-1-98-SC
- E-1-01-SC
- L-3-96-SC
- O-1-99-SC
- 3-nm limit
- Map Blocks
- County Line



Cruise ID	Dates	Chief Scientist	Source	Frequency	Digital	Analog
L-3-96-SC	04/02/1996 to 04/04/1996	Clarke/Kennedy	geopulse		no	yes
A-1-98-SC	08/09/1998 to 08/23/1998	Normark	huntec, 24channel		yes	yes
O-1-99-SC	06/06/1999 to 06/17/1999	Normark	huntec, 24channel, airgun	12khz	yes	yes
A-1-00-SC	06/05/2000 to 06/29/2000	Gutmatcher/Ross/Edwards	uniboom, geopulse, huntec, sparker, minisparker, 24channel	12khz	yes	yes
E-1-01-SC	01/08/2001 to 01/13/2001	Edwards	24channel, geopulse		yes	yes
A-1-03-SC	07/18/2003 to 07/31/2003	Edwards/Lee	chirp	3.5kHz	yes	yes

