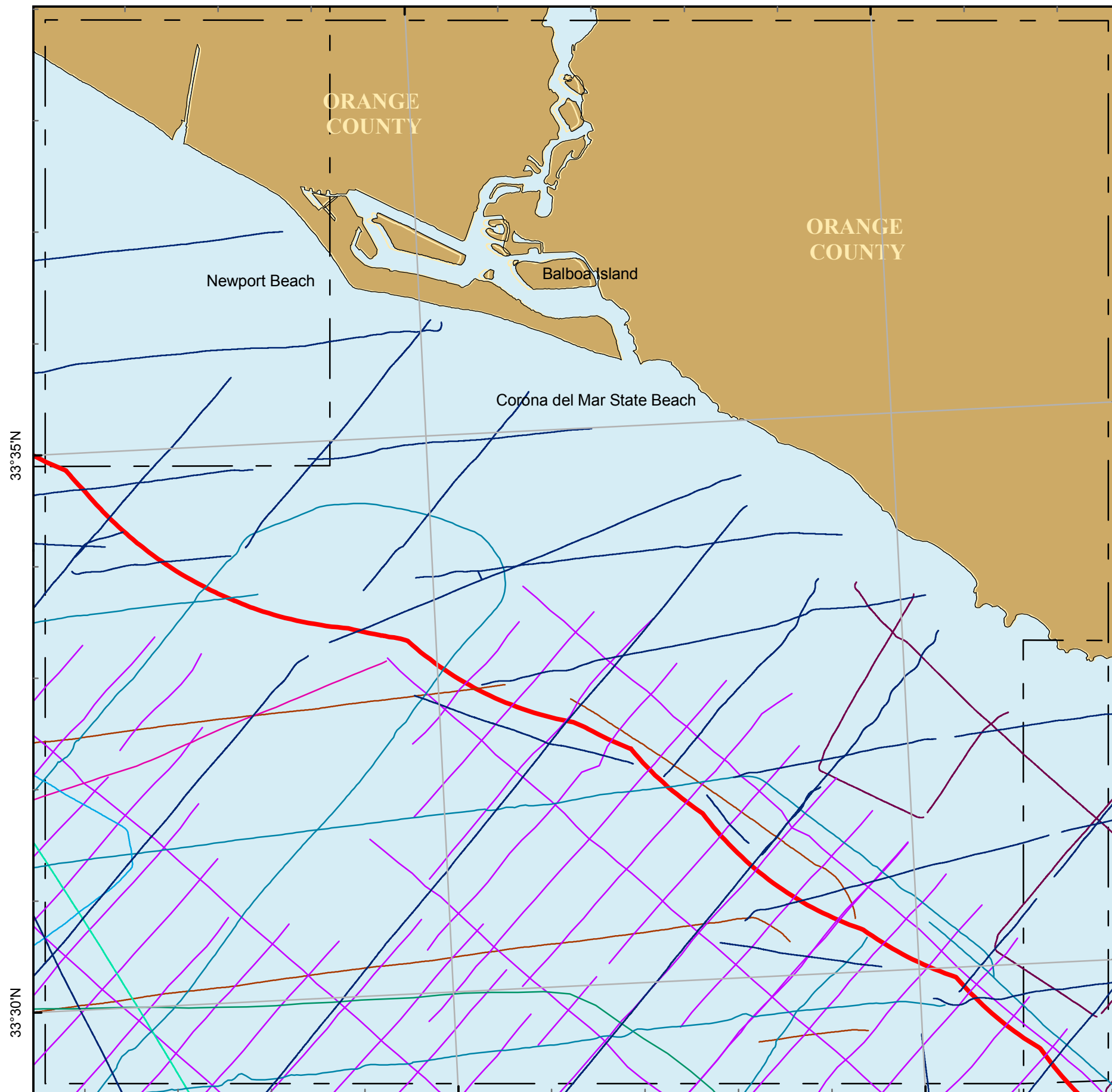


117°55'W

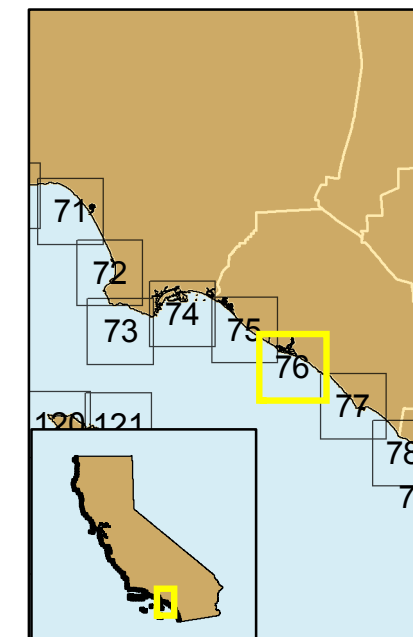
117°50'W



Projection: UTM Zone 10 Datum: WGS84 Map Scale: 1:75,000

Seismic Reflection Data in California State Waters Block 76 C

- S-1-80-SC
- F-1-84-SC
- E-15-94-SC
- A-1-98-SC
- O-1-99-SC
- A-1-00-SC
- A-1-03-SC
- S-2-06-SC
- B-1-08-SC
- 3-nm limit
- Map Blocks
- County Line



Cruise ID	Dates	Chief Scientist	Source	Frequency	Digital	Analog
S-1-80-SC	10/00/1980 to 02/00/1981	Minerals Management Service	sparker, minisparker		yes	no
F-1-84-SC	04/26/1984 to 05/21/1984	Field/Edwards	airgun	3.5kHz	no	yes
E-15-94-SC	10/13/1994 to 10/21/1994	Brocher	airgun, 24channel		yes	yes
A-1-98-SC	08/09/1998 to 08/23/1998	Normark	huntec, 24channel		yes	yes
O-1-99-SC	06/06/1999 to 06/17/1999	Normark	huntec, 24channel, airgun	12khz	yes	yes
A-1-00-SC	06/05/2000 to 06/29/2000	Gutmatcher/Ross/Edwards	uniboom, geopulse, huntec, sparker, minisparker, 24channel	12khz	yes	yes
A-1-03-SC	07/18/2003 to 07/31/2003	Edwards/Lee	chirp	3.5kHz	yes	yes
S-2-06-SC	09/01/2006 to 09/08/2006	Hart/Ryan	minisparker		yes	no
B-1-08-SC	04/28/2008 to 05/04/2008	Ryan/Conrad/Pabst/Ota	sparker, chirp		yes	no

