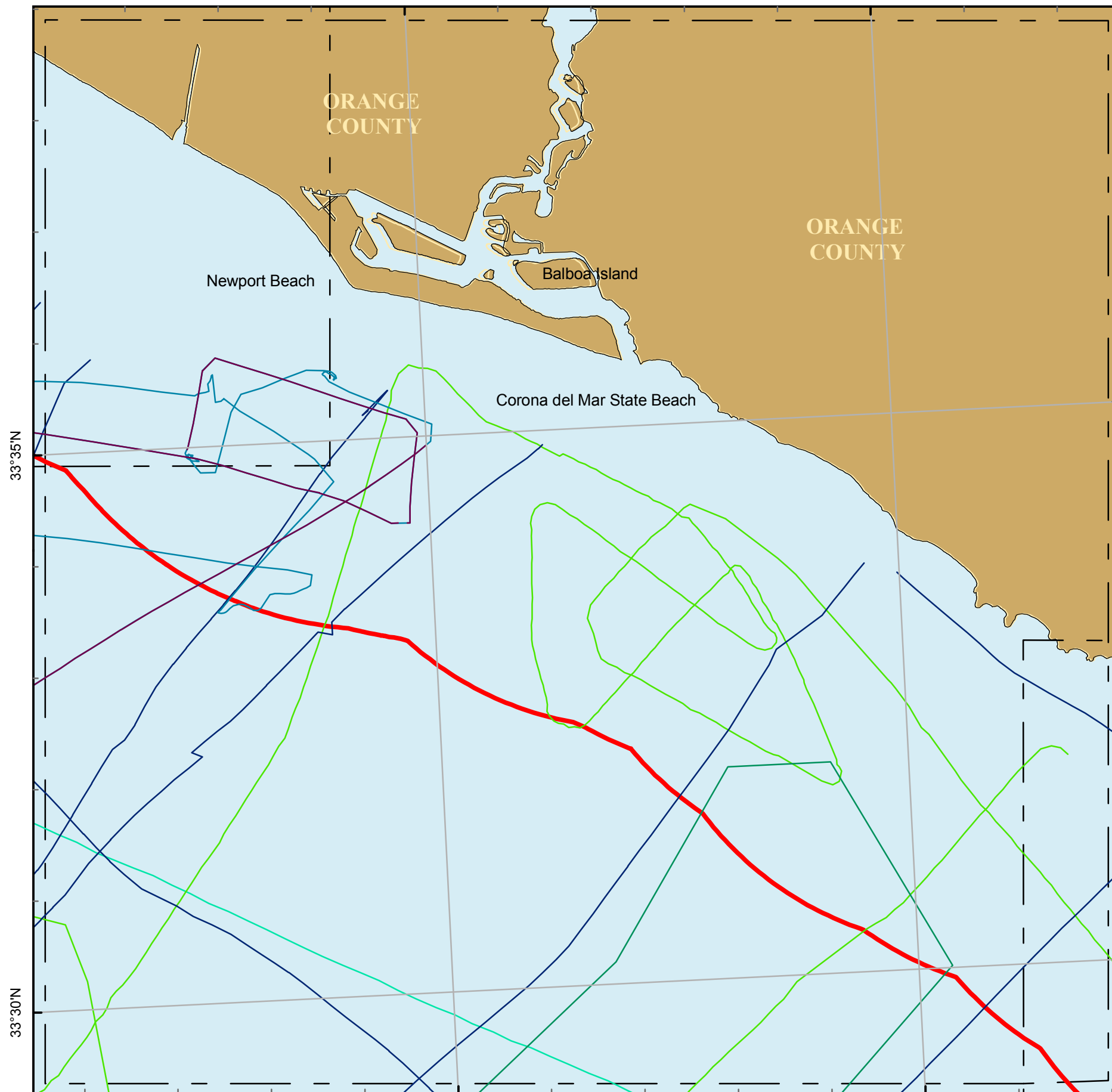


117°55'W

117°50'W



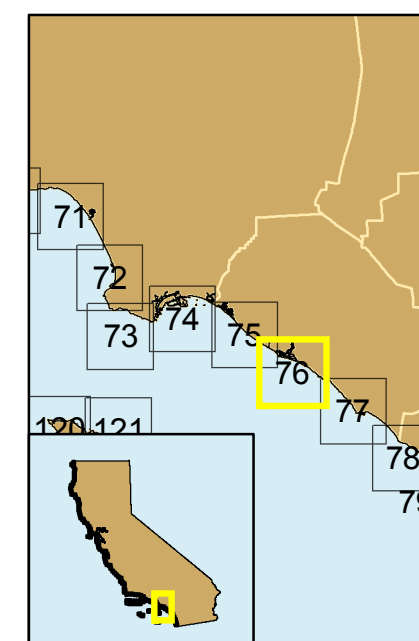
33°35'N

33°30'N

Projection: UTM Zone 10 Datum: WGS84 Map Scale: 1:75,000

Seismic Reflection Data in California State Waters Block 76 B

- P-2-70-SC
- L-2-76-SC
- S-1-78-SC
- S-2-78-SC
- S-2A-79-SC
- S-2B-79-SC
- 3-nm limit
- Map Blocks
- County Line



Cruise ID	Dates	Chief Scientist	Source	Frequency	Digital	Analog
P-2-70-SC	11/20/1970 to 12/05/1970	Greene	uniboom, minisparker, sparker			yes
L-2-76-SC	02/25/1976 to 03/19/1976	Greene	minisparker, uniboom, airgun	3.5kHz	no	yes
S-1-78-SC	04/17/1978 to 04/29/1978	Cacchione	uniboom	3.5kHz, 12kHz	no	yes
S-2-78-SC	05/02/1978 to 05/21/1978	Greene	sparker, uniboom, airgun, minisparker	3.5kHz, 12kHz	no	yes
S-2A-79-SC	04/07/1979 to 04/17/1979	Greene	uniboom, airgun, sparker, minisparker	3.5kHz, 12kHz	no	yes
S-2B-79-SC	04/18/1979 to 04/23/1979	Clarke/Field	uniboom, airgun, sparker	3.5kHz, 12kHz	no	yes

