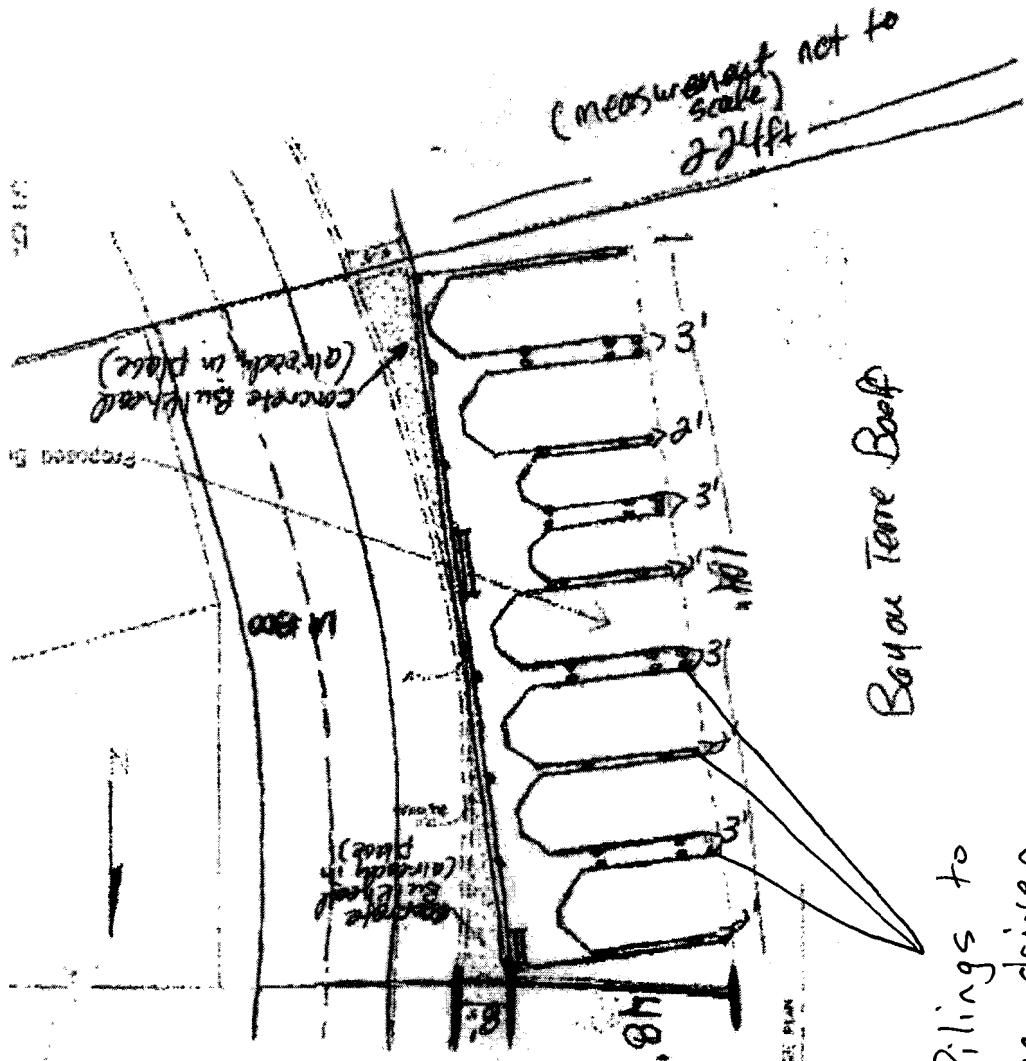


P-20081133

Crawford boat dock



Bulkhead
Already in place

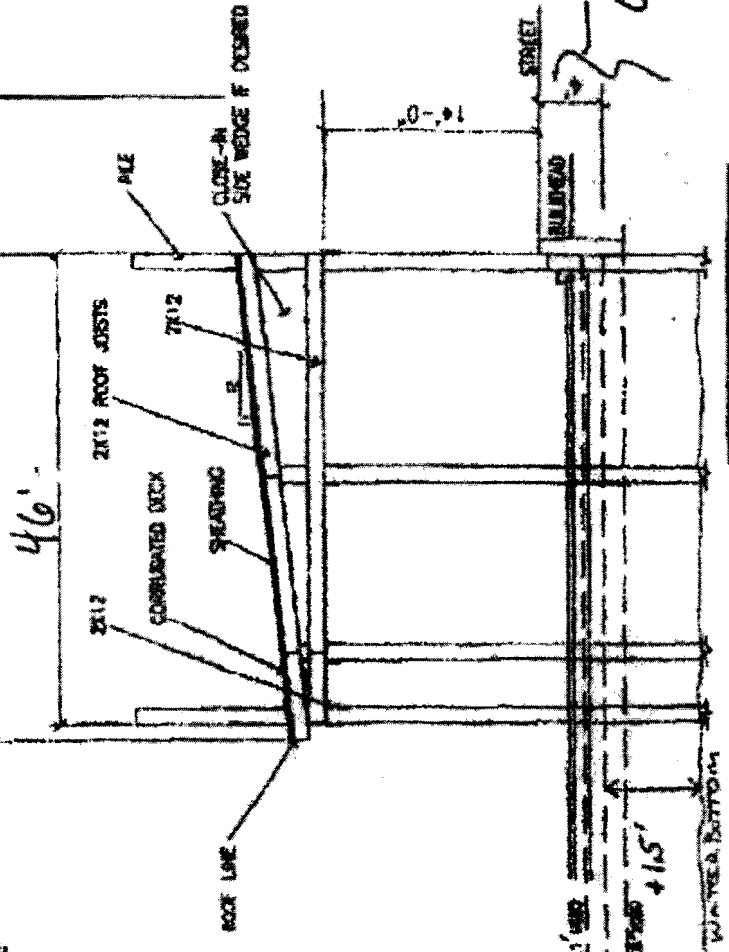
Bayou Terre Boeuf

- Pilings to be driven

DIETZ PROJECT
6101 DELACROIX HIGHWAY

8' Bulkhead in place
(already in place)

40'



concrete bulkhead
already in place.

FINISH + 21' 000
ADJUS THE WED
FINISH + 21' 000 + 15'



11/19/08
P20081133