

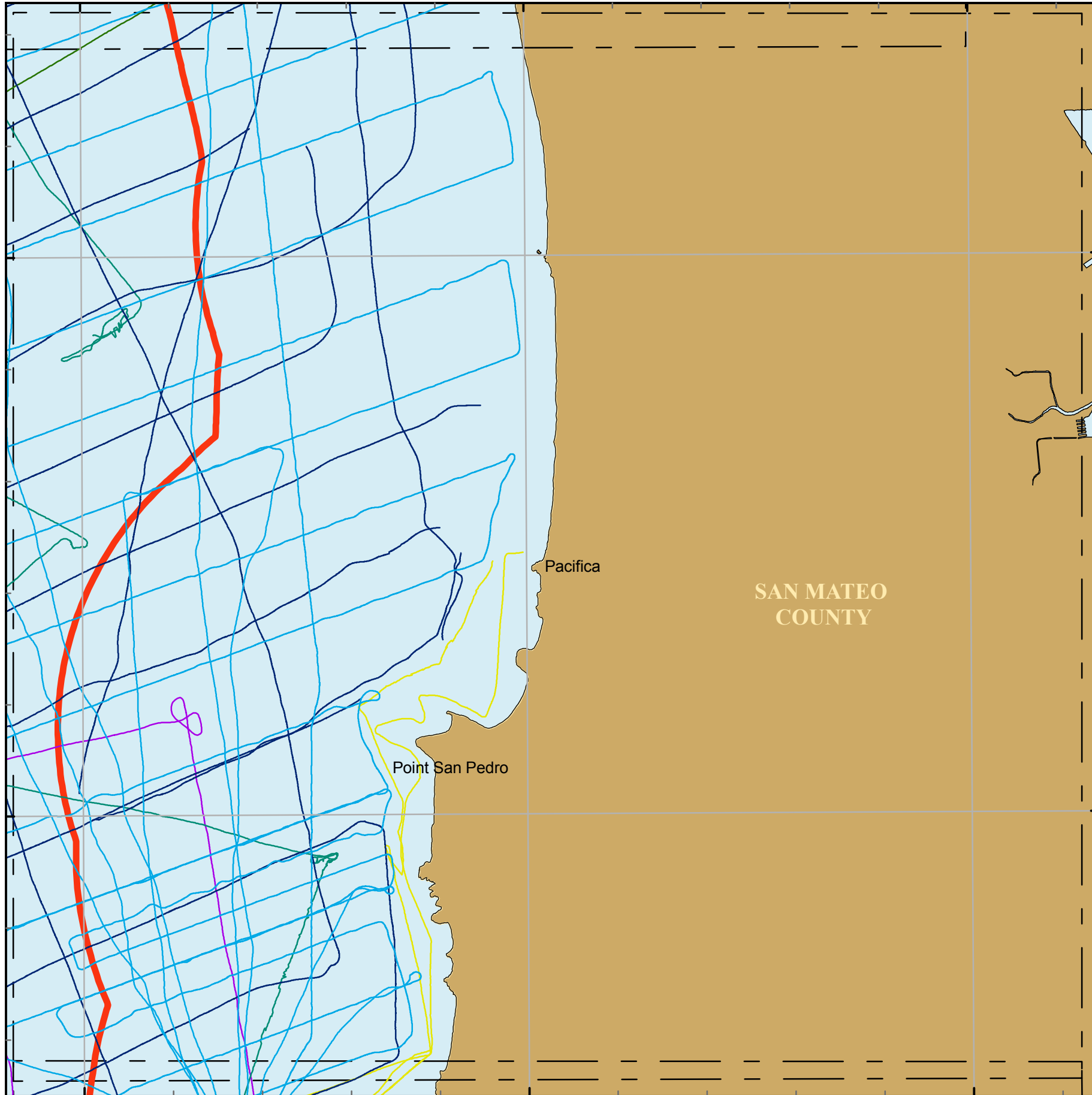
122°35'W

122°30'W

122°25'W

37°40'N

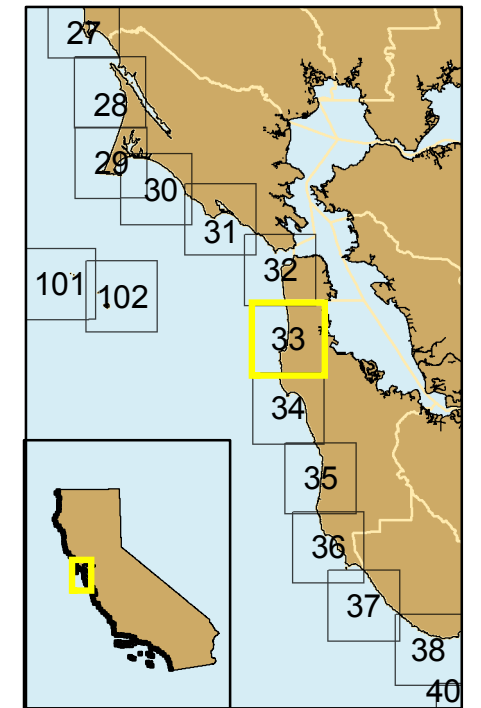
37°35'N



Block 33 C

Seismic Reflection Data in California State Waters Block 33 C

- F-2-07-NC
- G-2-95-SF
- J-1-94-MB
- L-1-06-SF
- M-1-95-MB
- M4-97-MB
- 3-nm limit
- Map Blocks
- County Line



Cruise ID	Chief Scientist	Dates	Source	Frequency	Digital	Analog
J-1-94-MB	Anima/Trait	02/28/1995 to 03/11/1994	geopulse			Yes
G-2-95-SF	Bruns/Carlson/Mann	05/30/1995 to 06/10/1995	airgun		Yes	Yes
M-1-95-MB	Pickett/Jackson	04/02/1995 to 04/13/1995	uniboom			Yes
M-4-97-MB	Mann/Lewis	09/09/1997 to 09/17/1997	airgun, 24Channel	3.5kHz, 12kHz	Yes	Yes
L-1-06-SF	Ryan	09/25/2006 to 10/03/2006	minisparker, chirp		Yes	No
F-2-07-NC	Chin/Ross	03/22/2007 to 04/06/2007			Yes	No

