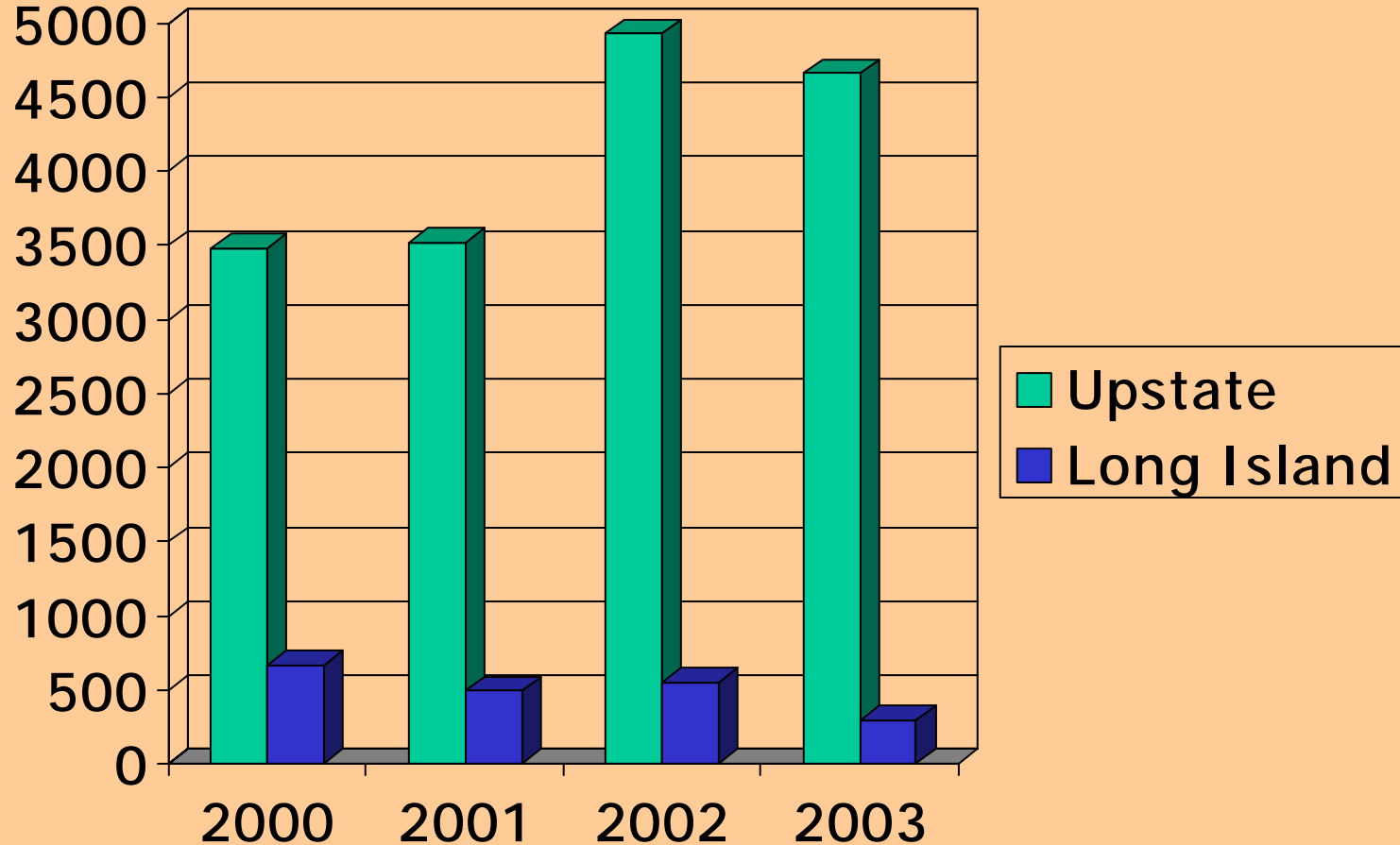
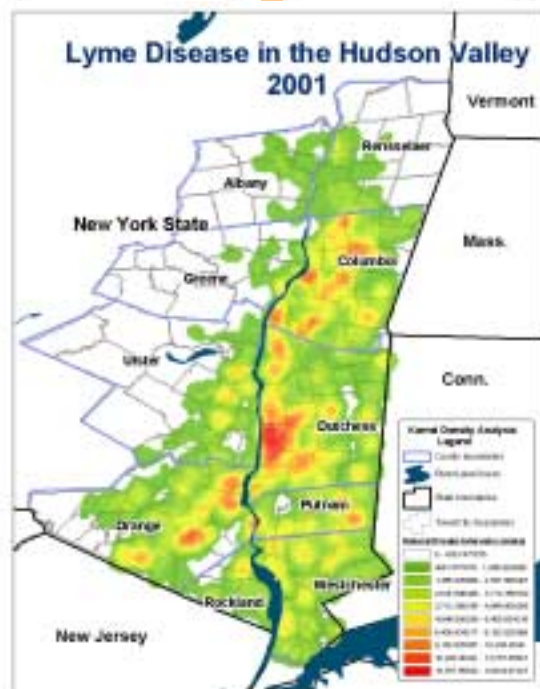
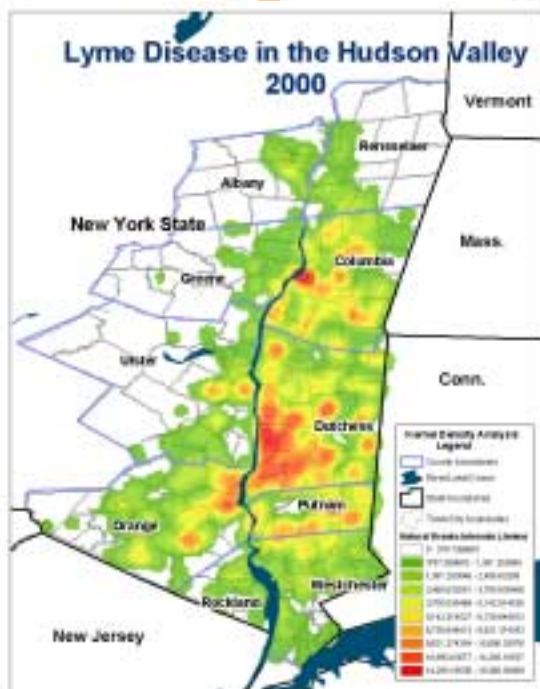
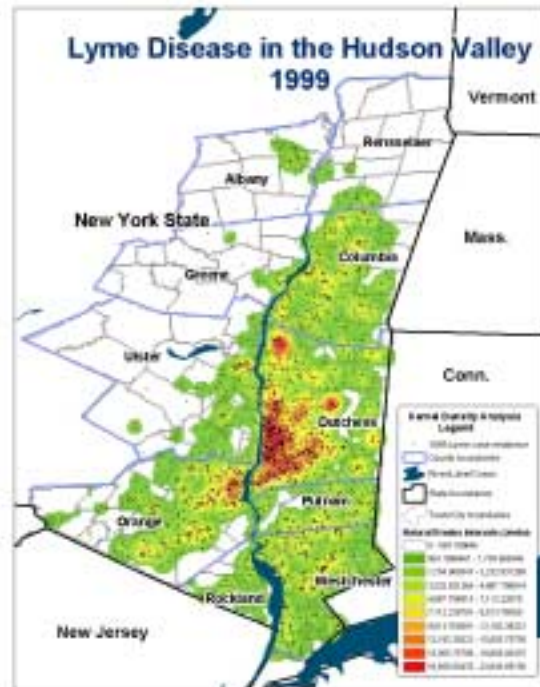
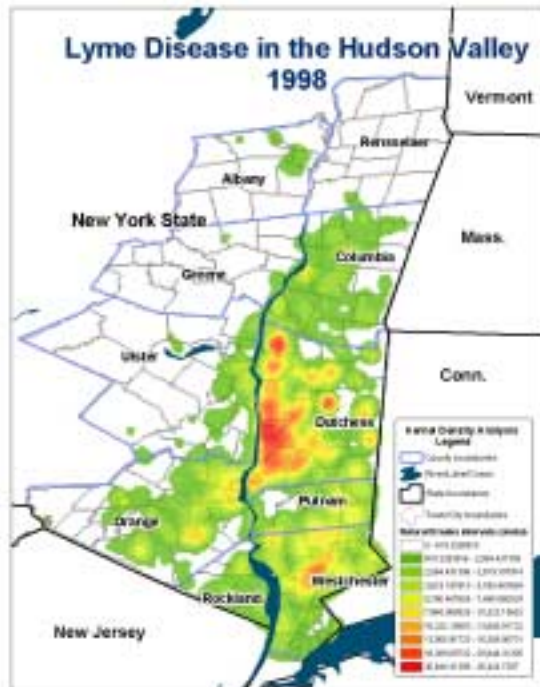
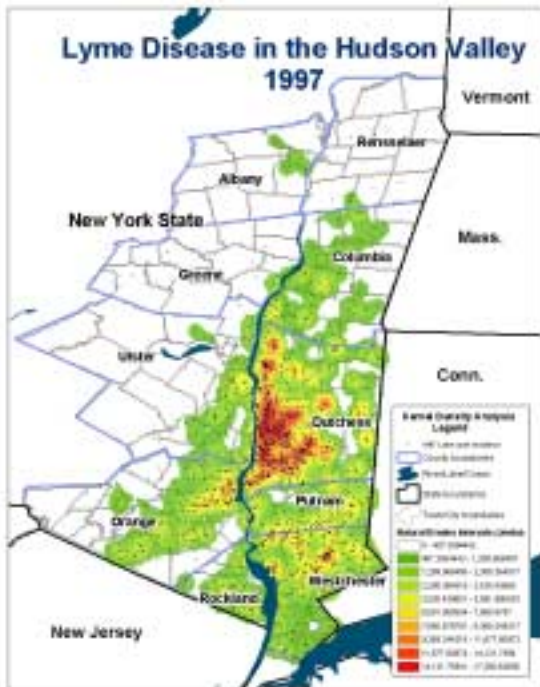


Lyme Disease Cases, New York, 2000-2003

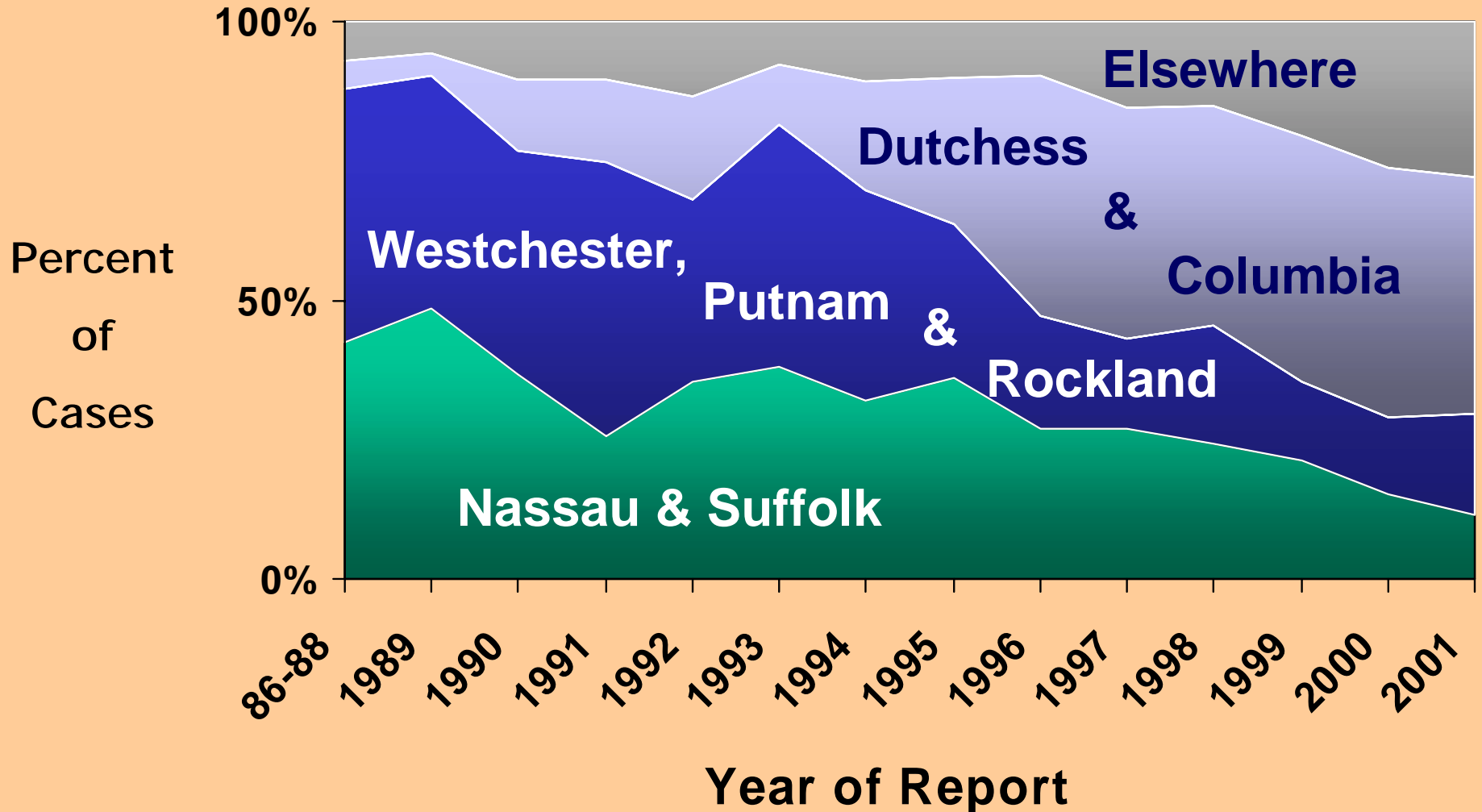
by date of onset; 2003 data still subject to change





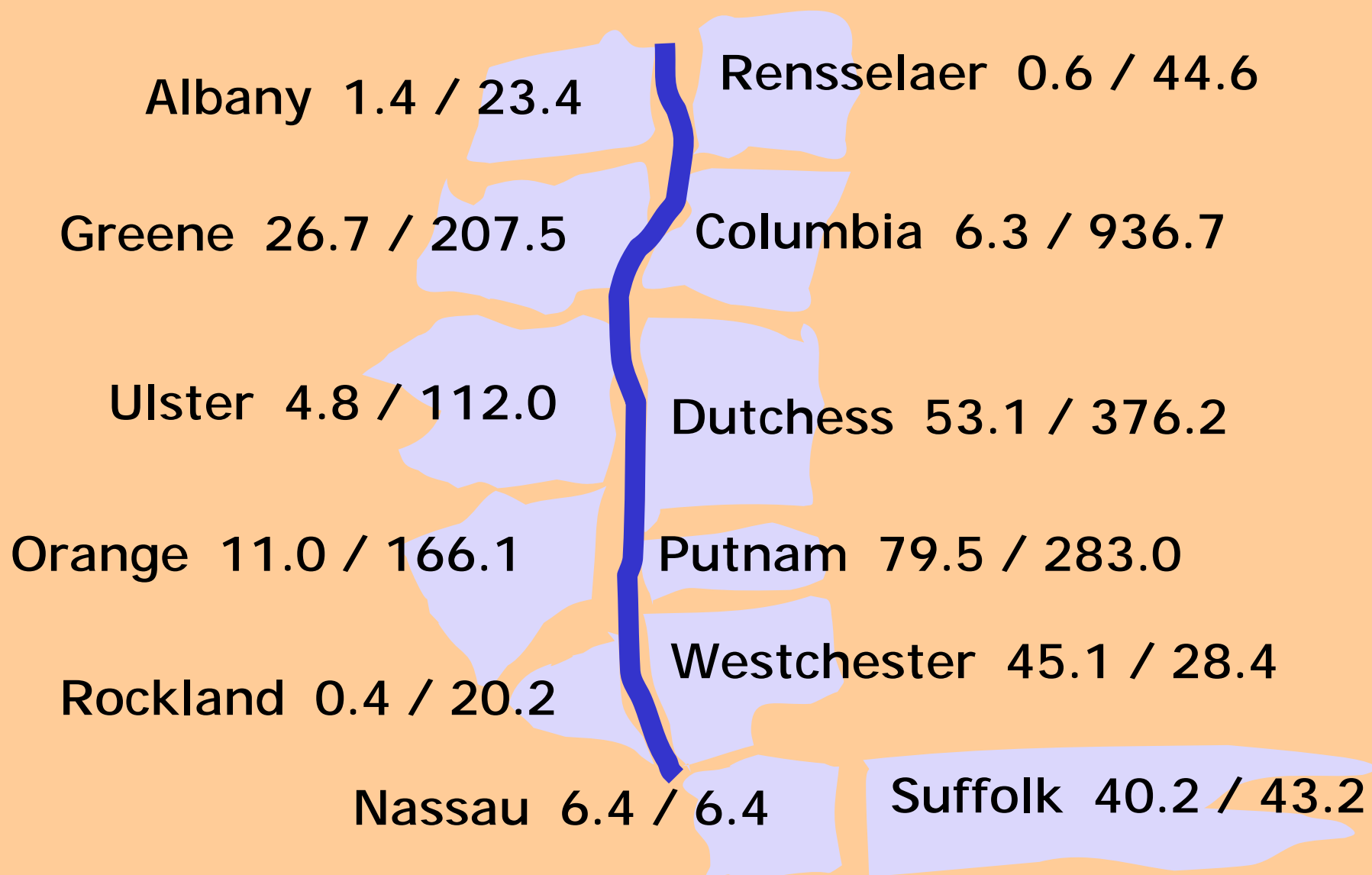
Annual Proportion of Lyme Disease Cases

by Region in New York State (Excluding New York City); 1986-2001



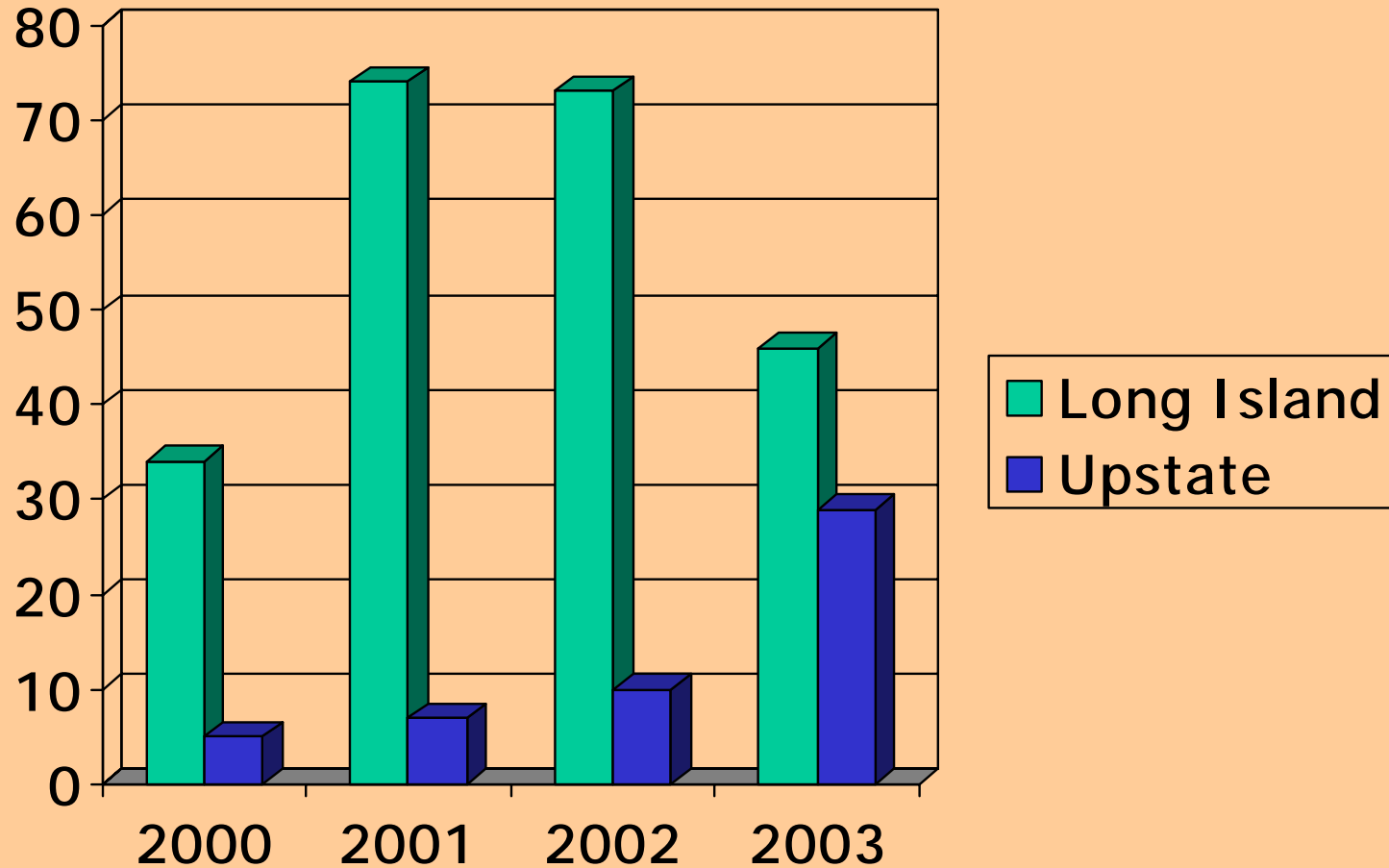
Lyme Disease Incidence (per 100,000 population)

12 Selected Counties in New York State – 1990 vs. 2000



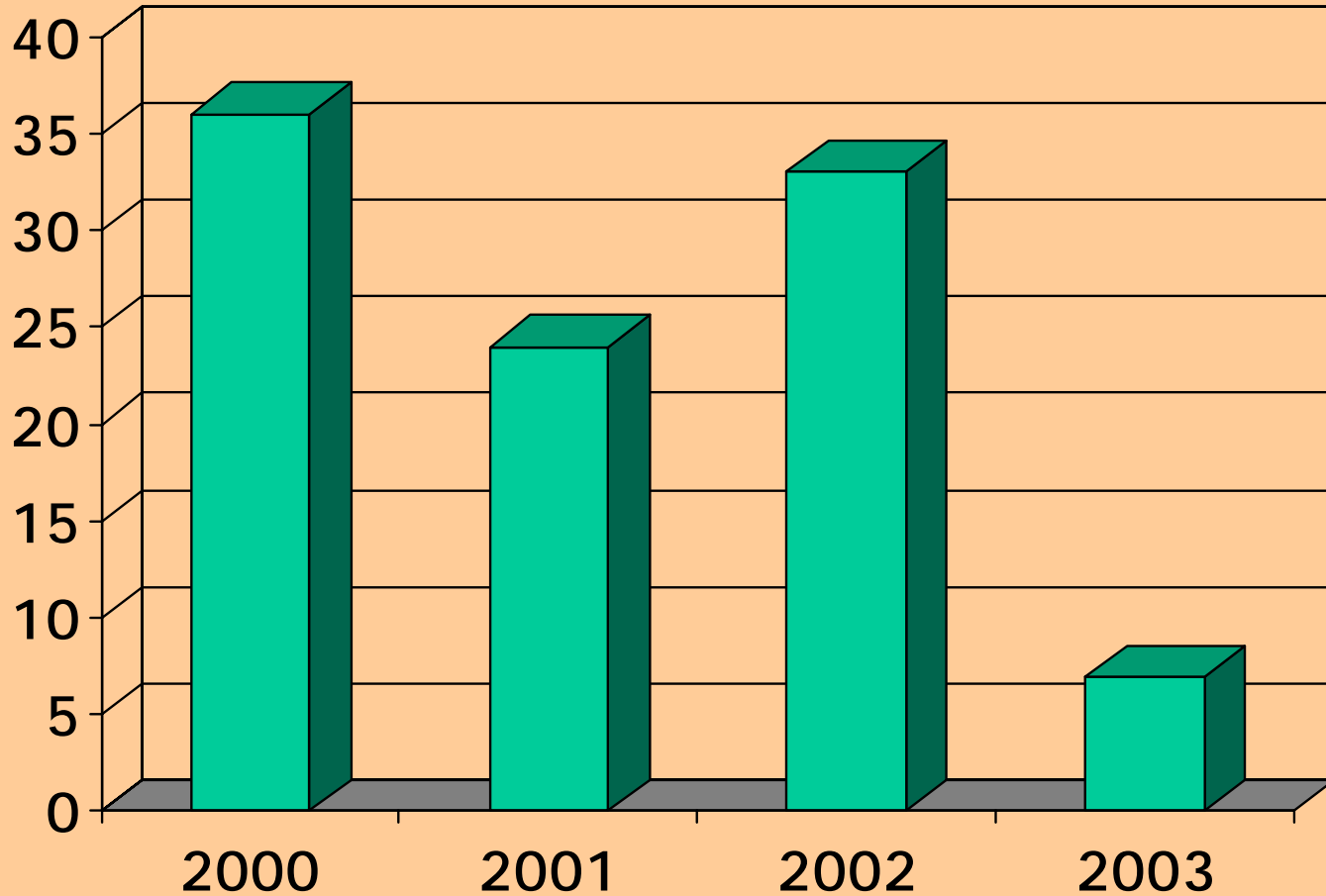
Babesiosis Cases, New York, 2000-2003

by date of onset; 2003 data still subject to change



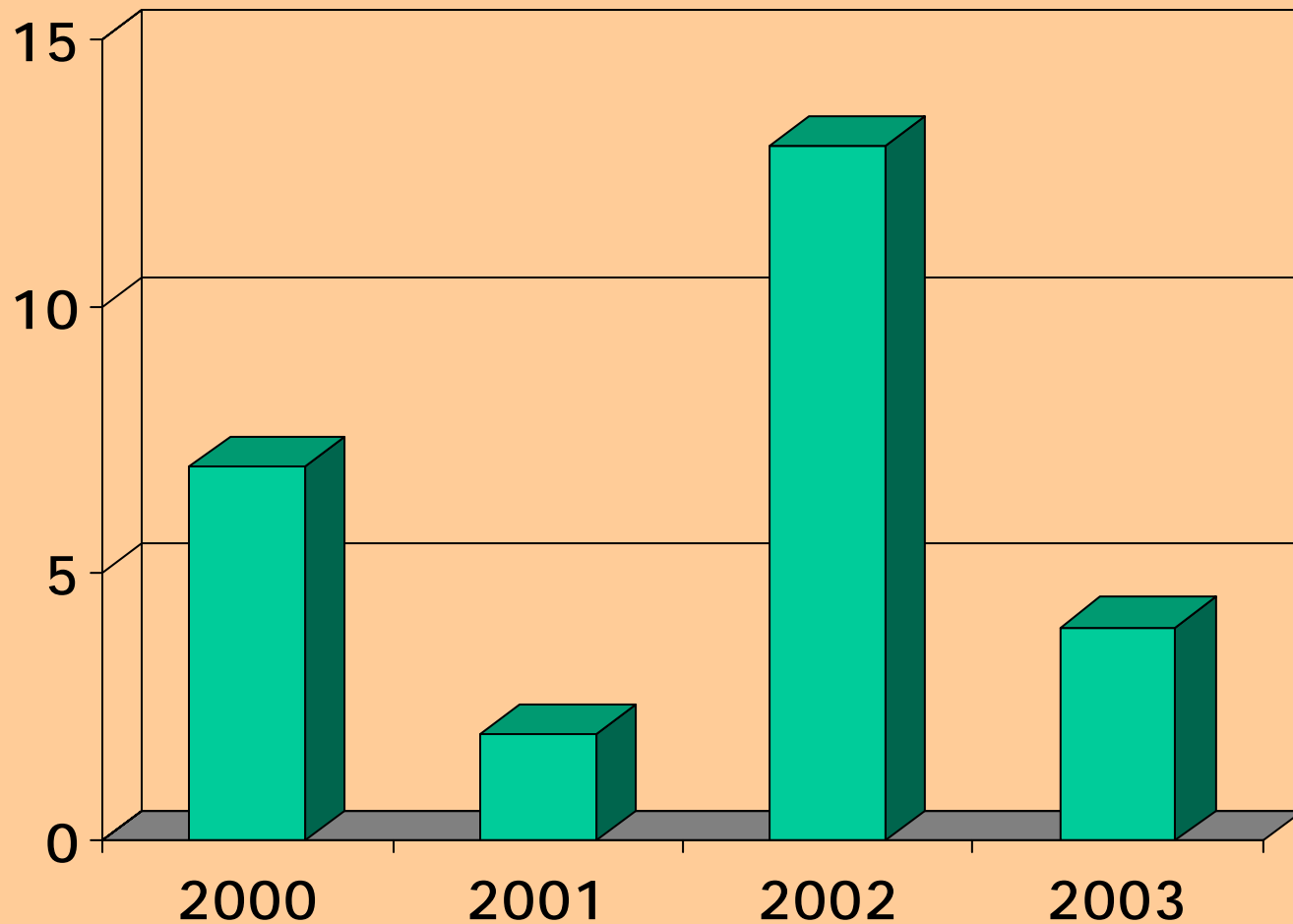
Ehrlichiosis Cases, New York, 2000-2003

by date of onset; 2003 data still subject to change



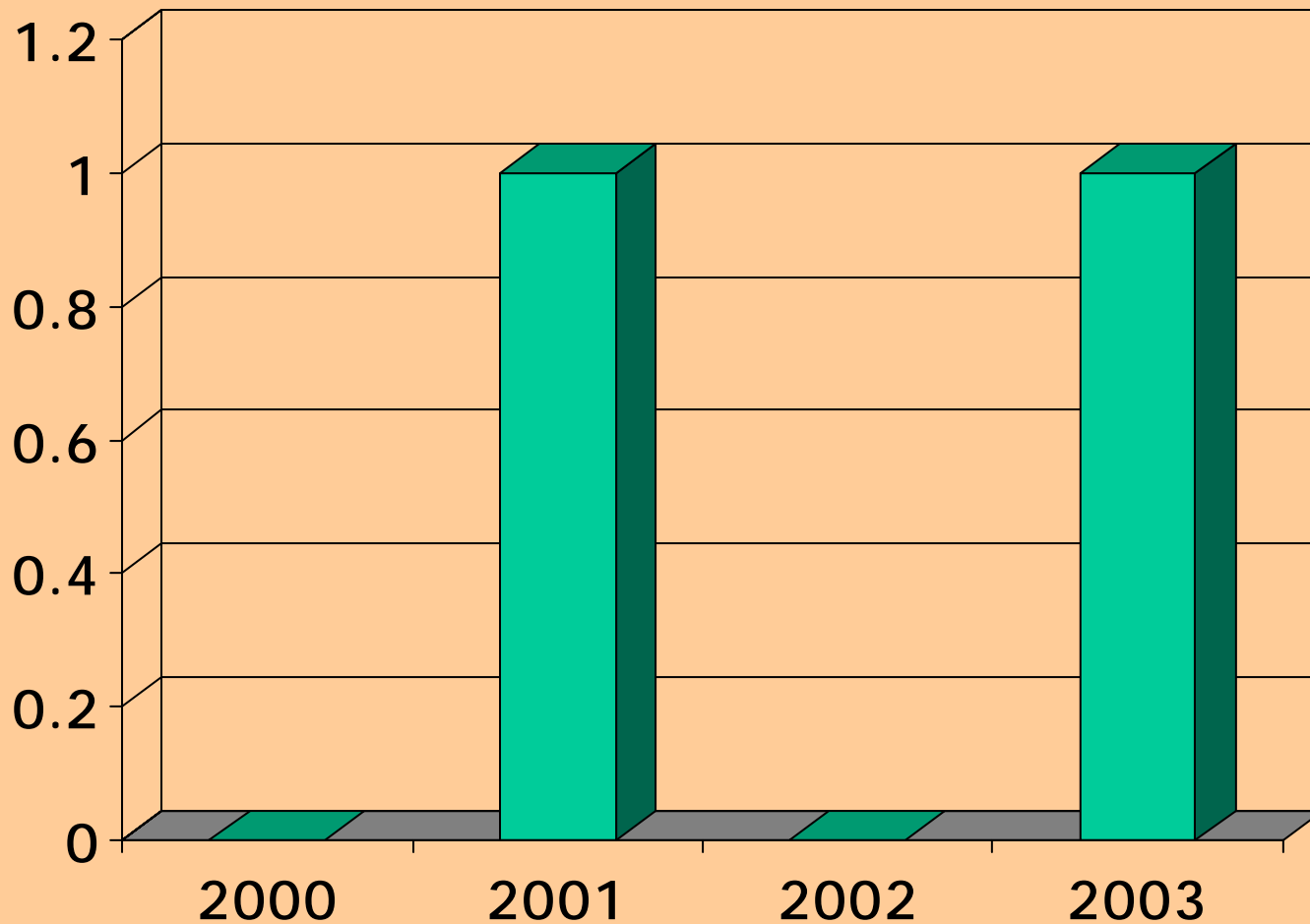
RMSF Cases, New York, 2000-2003

by date of onset; 2003 data still subject to change



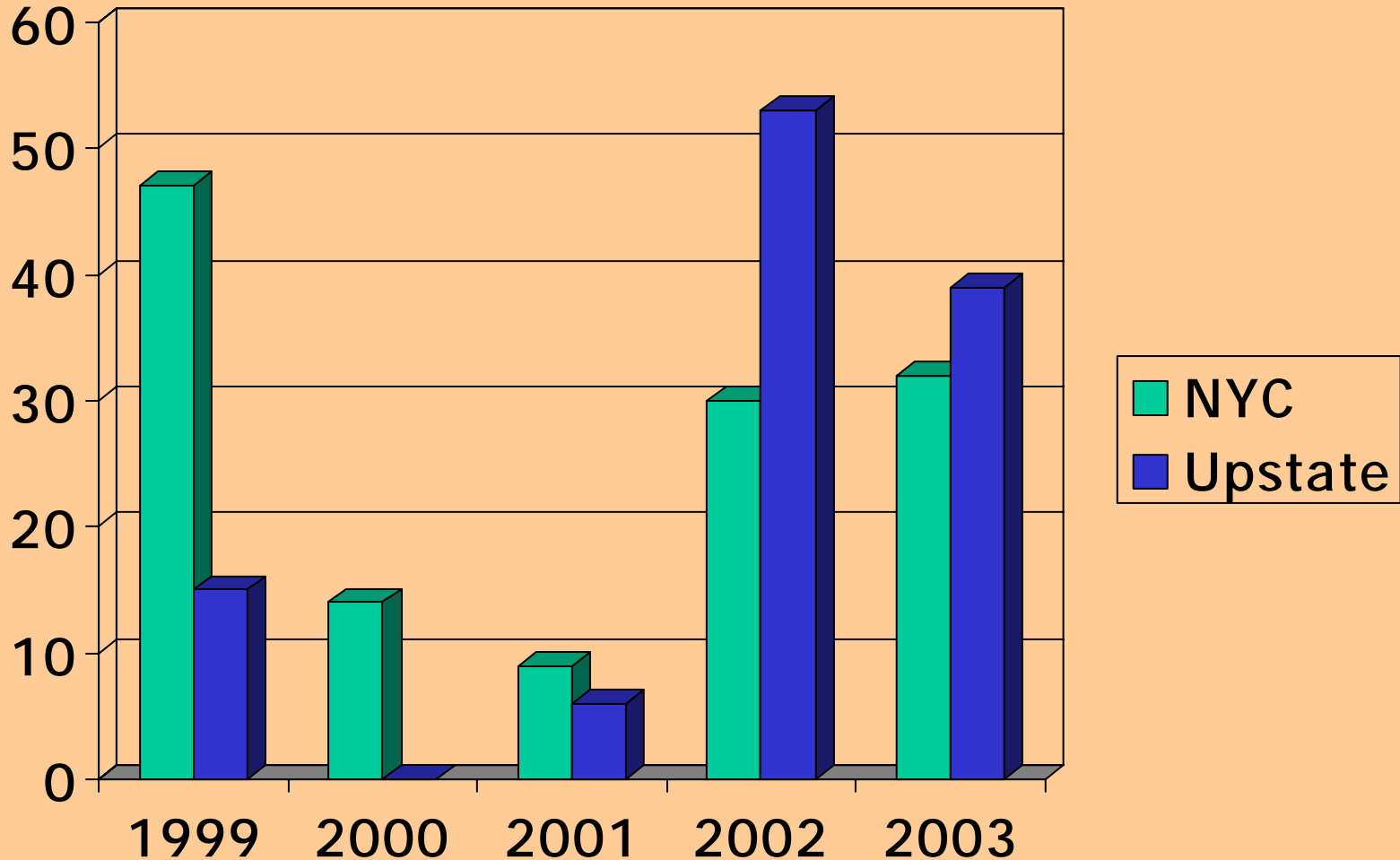
Tularemia Cases, New York, 2000-2003

by date of onset; 2003 data still subject to change



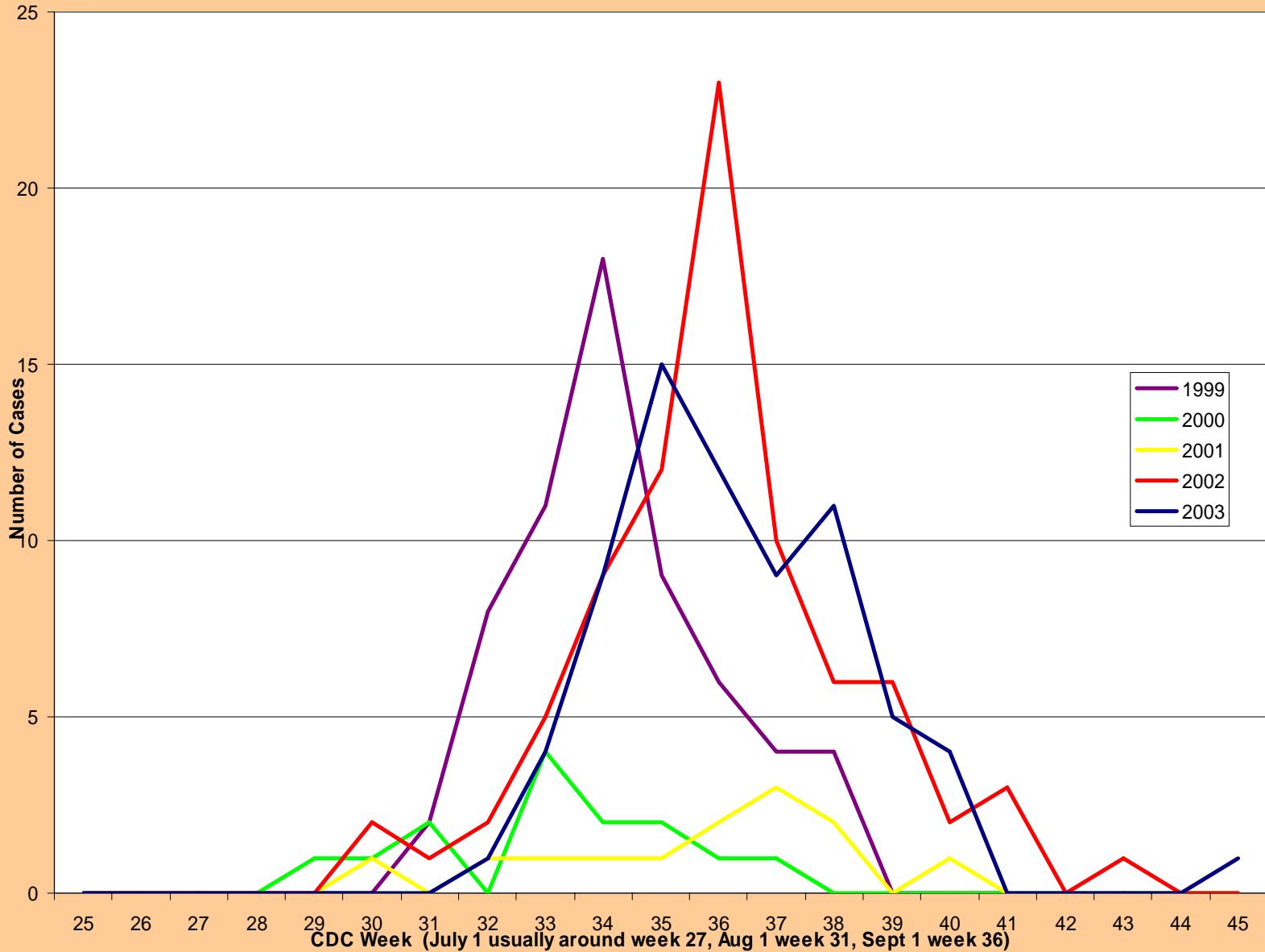
West Nile Virus Cases, New York, 1999-2003

by date of onset; 2003 data still subject to change

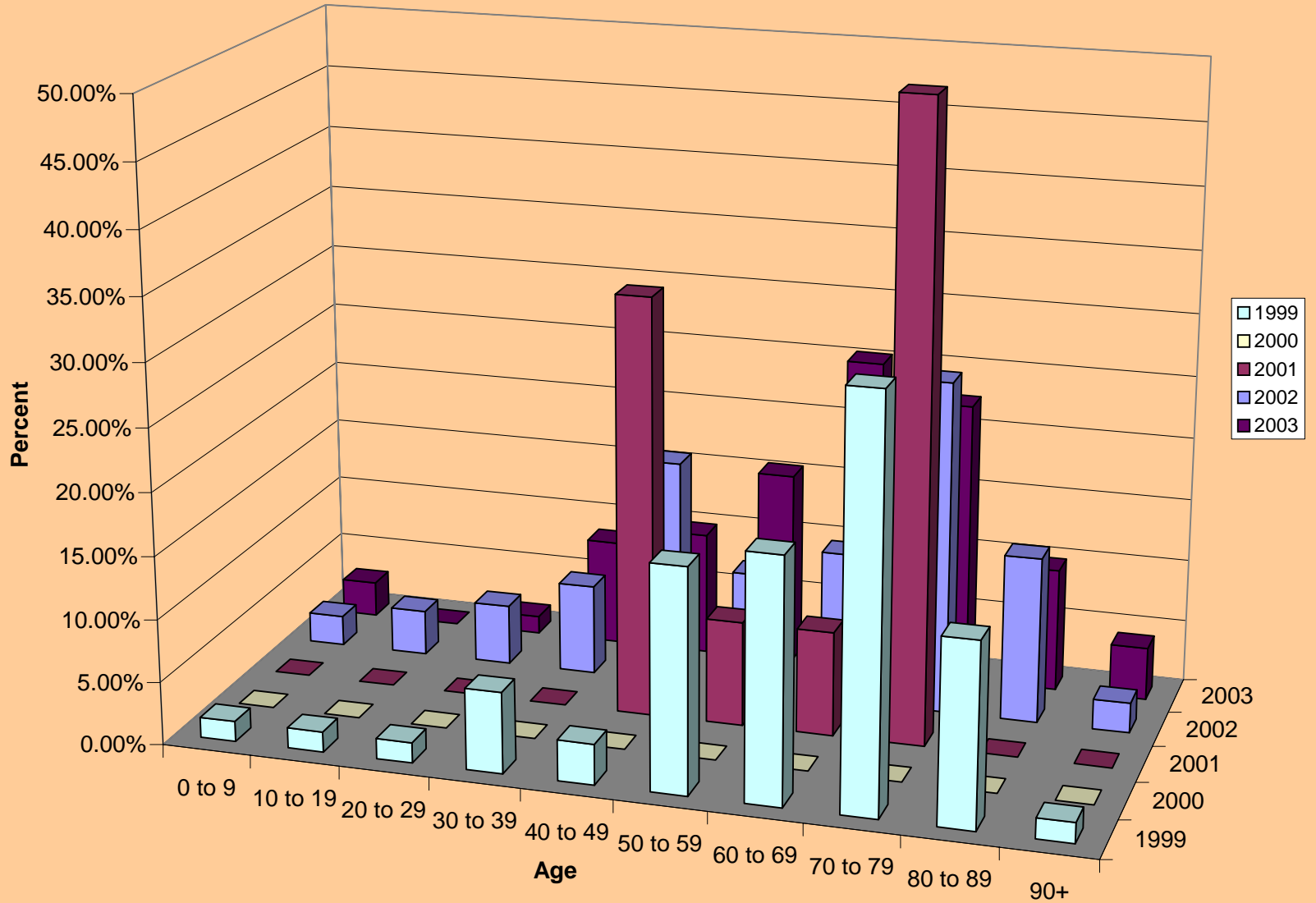


Human WNV Cases in New York State

By Date of Onset

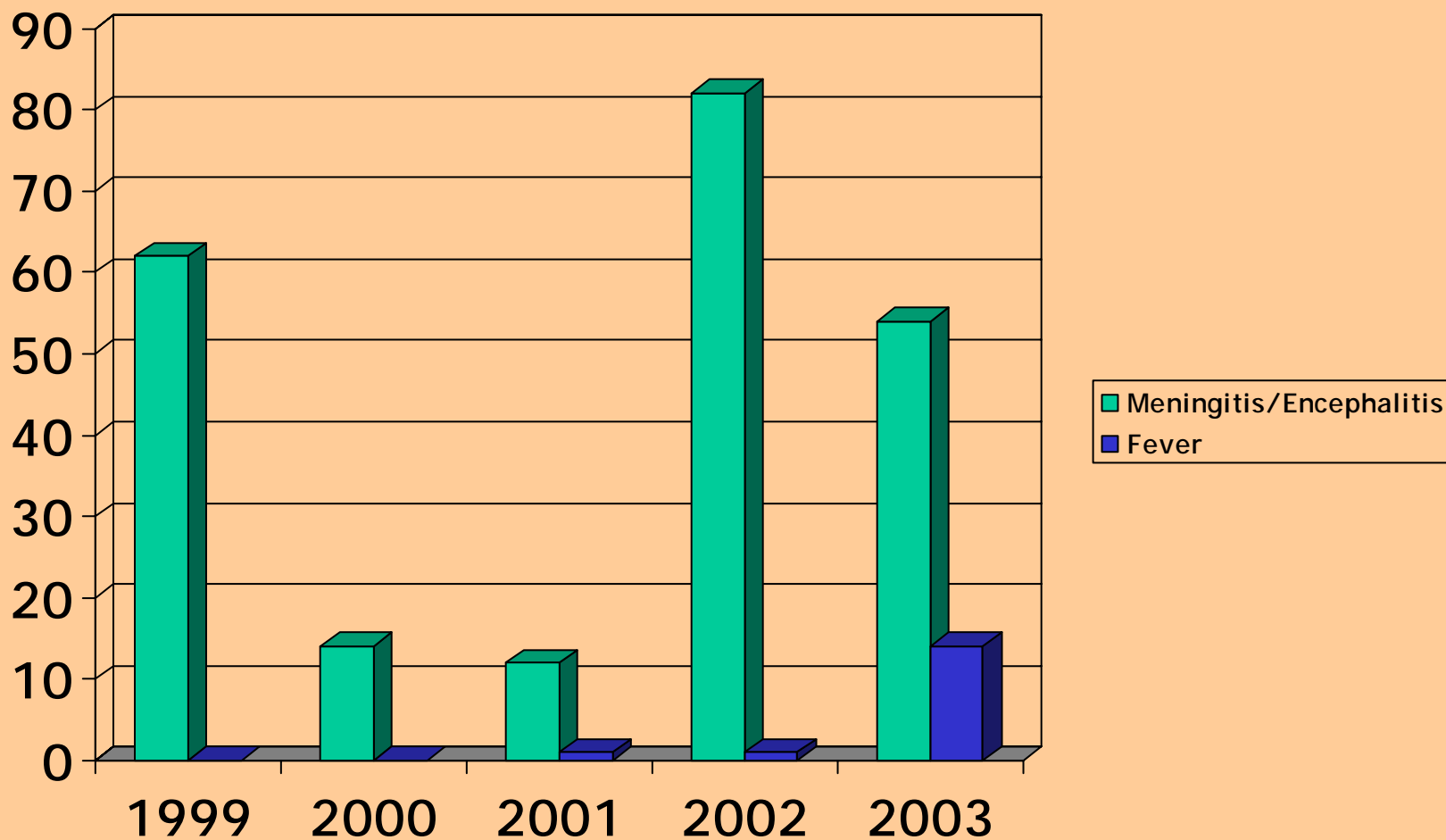


Age Distribution, New York State WNV Cases

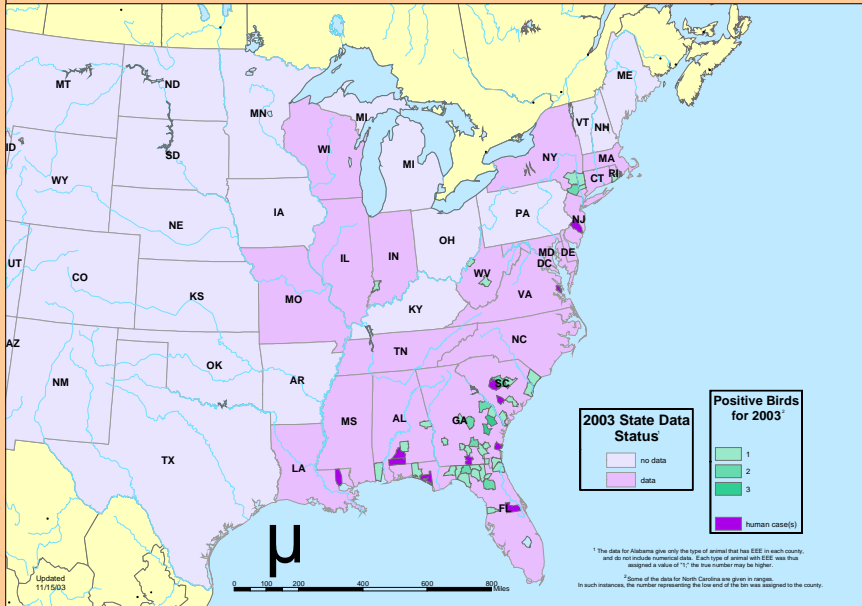


West Nile Virus Cases, New York, 1999-2003

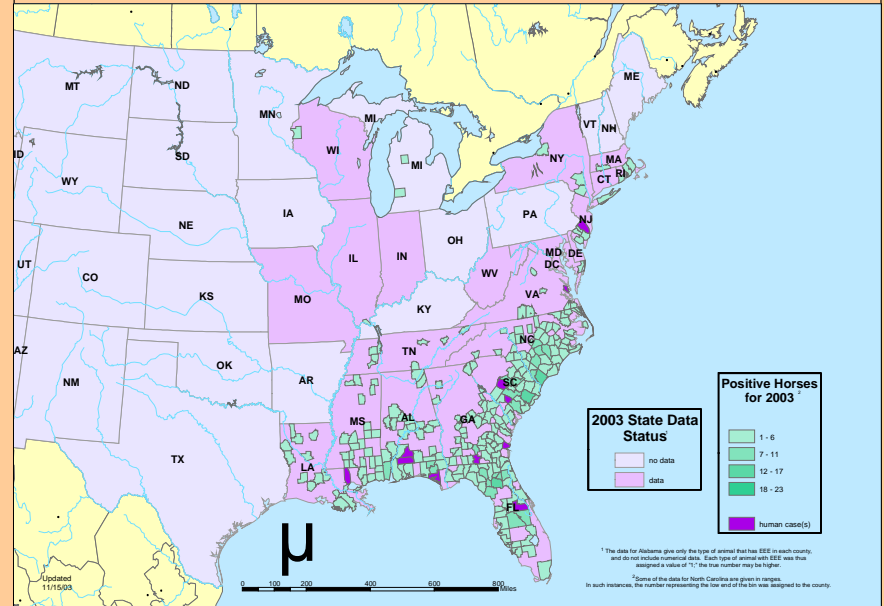
by classification; 2003 data still subject to change



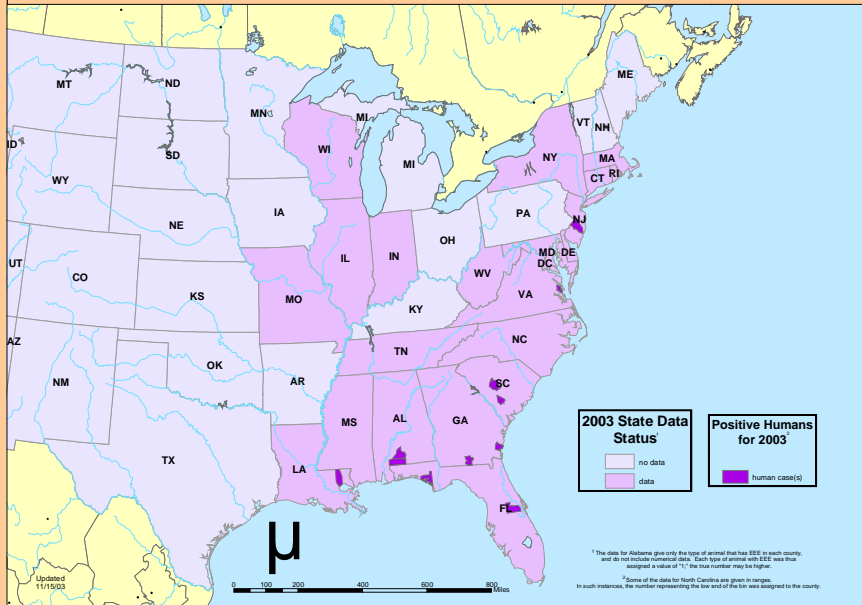
Dead Birds Testing Positive for Eastern Equine Encephalitis for 2003 United States



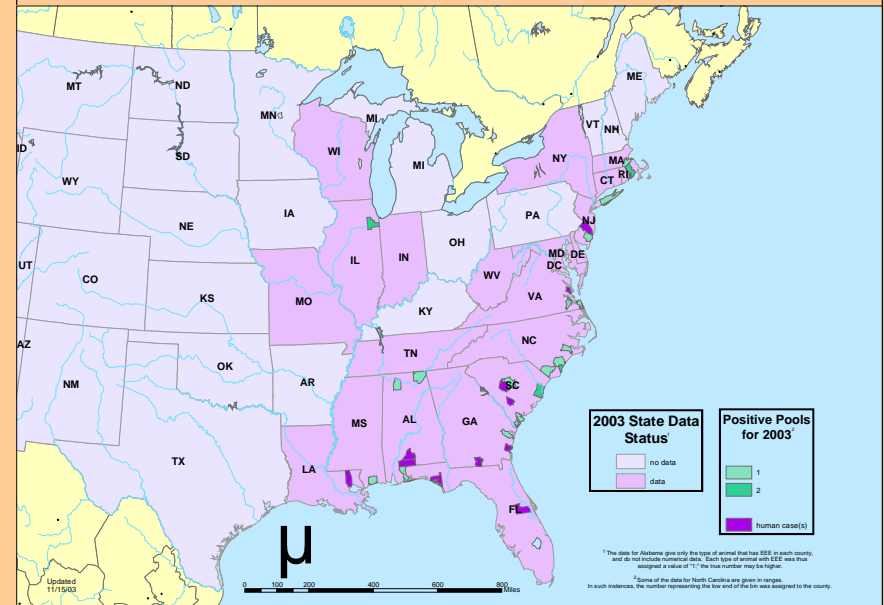
Horses Testing Positive for Eastern Equine Encephalitis for 2003 United States



Humans Testing Positive for Eastern Equine Encephalitis for 2003 United States

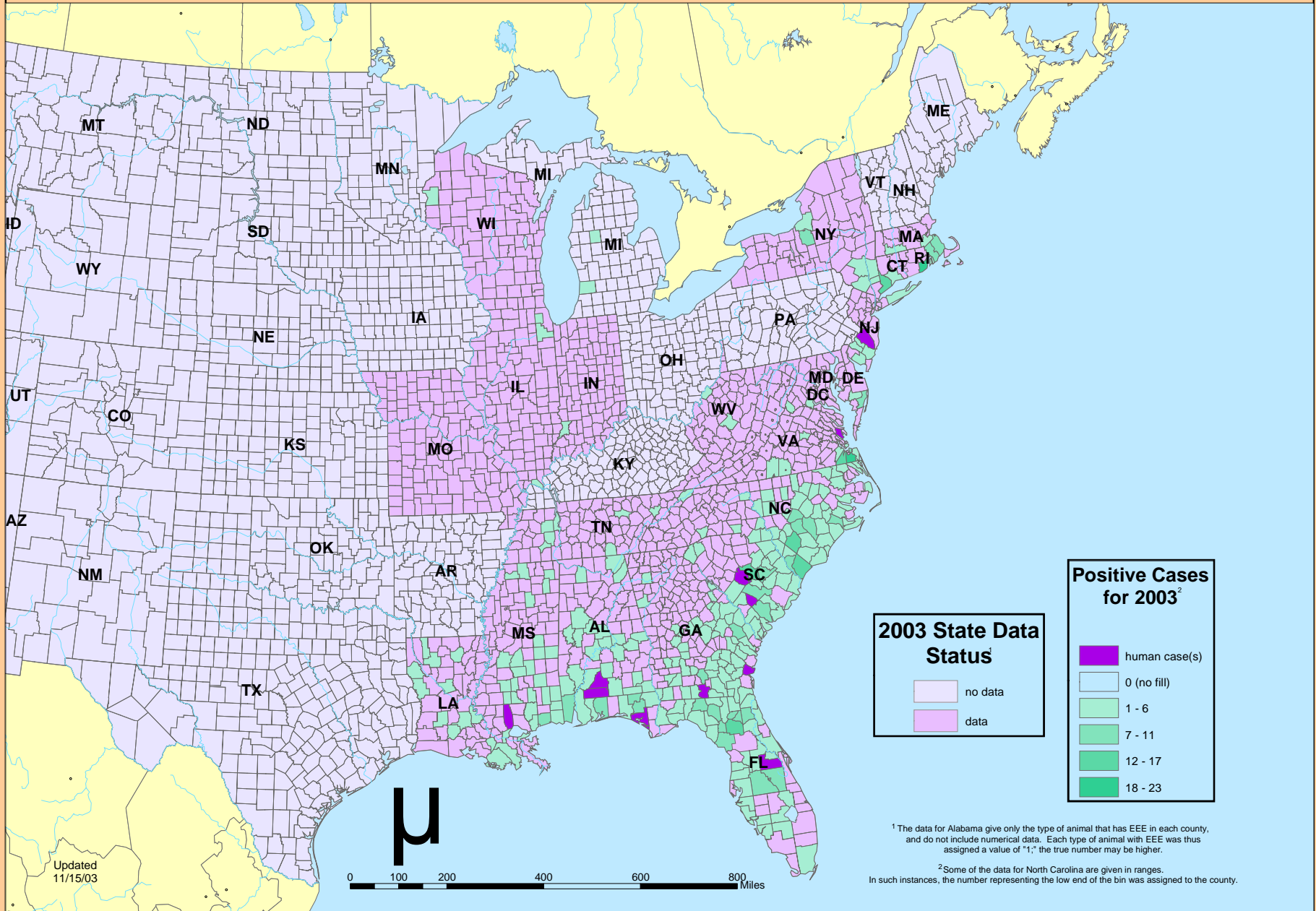


Mosquito Pools Testing Positive for Eastern Equine Encephalitis for 2003 United States



Total Cases of Eastern Equine Encephalitis for 2003

United States



Updated
11/15/03

2003 State Data Status¹

- no data
- data

Positive Cases for 2003²

- human case(s)
- 0 (no fill)
- 1 - 6
- 7 - 11
- 12 - 17
- 18 - 23

¹ The data for Alabama give only the type of animal that has EEE in each county, and do not include numerical data. Each type of animal with EEE was thus assigned a value of "1;" the true number may be higher.

² Some of the data for North Carolina are given in ranges. In such instances, the number representing the low end of the bin was assigned to the county.

Malaria Cases, New York, 2000-2003

by date of report; 2003 data still subject to change

