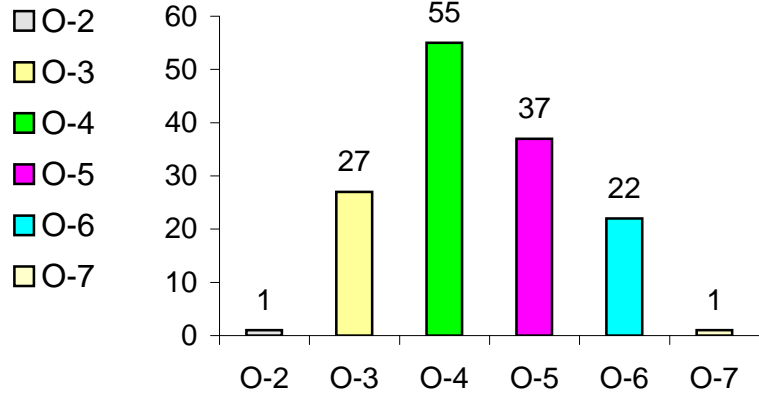
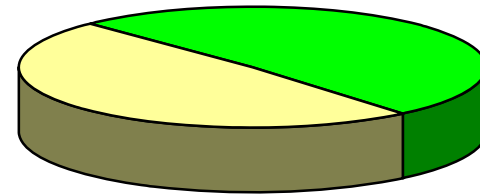


Grades



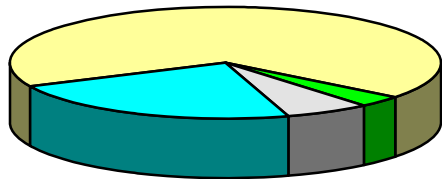
Corps

- Regular - 70 or 49%
- Reserve - 73 or 51%



Professional Discipline

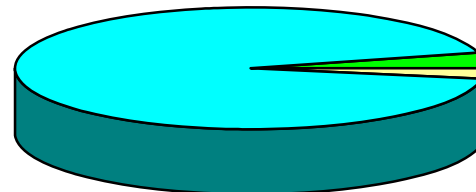
- Audiology - 5 or 6%
- Occupational Therapy - 33 or 23%
- Physical Therapy - 100 or 69%
- Speech Language Pathology - 5 or 3%



24% have specialty certification in their discipline

CCRF

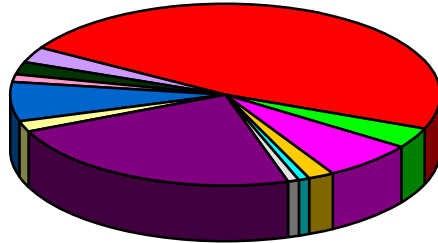
- Basic - 133 or 97%
- Exempt - 6 or 4%
- Not Qualified - 4 or 3%



As of 9/30/08

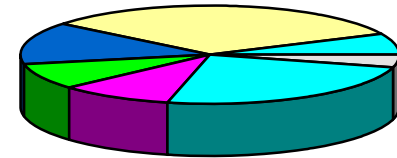
Operating Divisions

- AHRQ - 1 or 1%
- BOP - 33 or 23%
- CDC - 3 or 2%
- CM S - 10 or 7%
- DHS - 2 or 1%
- FDA - 3 or 2%
- HRSA - 4 or 3%
- IHS - 68 or 48%
- NIH - 5 or 4%
- OS - 10 or 7%
- SAMHSA - 3 or 2%
- USDA - 1 or 1%



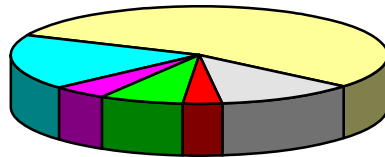
Geographical Distribution

- North east - 6 or 4%
- Mid Atlantic - 35 or 24%
- South - 14 or 10%
- North Central - 12 or 8%
- South Central - 20 or 14%
- West - 46 or 32%
- Pacific - 10 or 7%



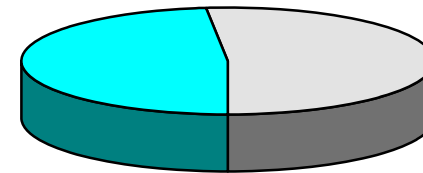
Diversity

- American Indian or Alaskan Native - 17 or 12%
- Asian or Pacific Islander - 5 or 3%
- Black, not of Hispanic Origin - 10 or 7%
- Hispanic - 7 or 5%
- Unknown - 26 or 18%
- White, not of Hispanic Origin - 78 or 55%



Gender

- Female - 69 or 48%
- Male - 74 or 52%



Retirement Credit

