

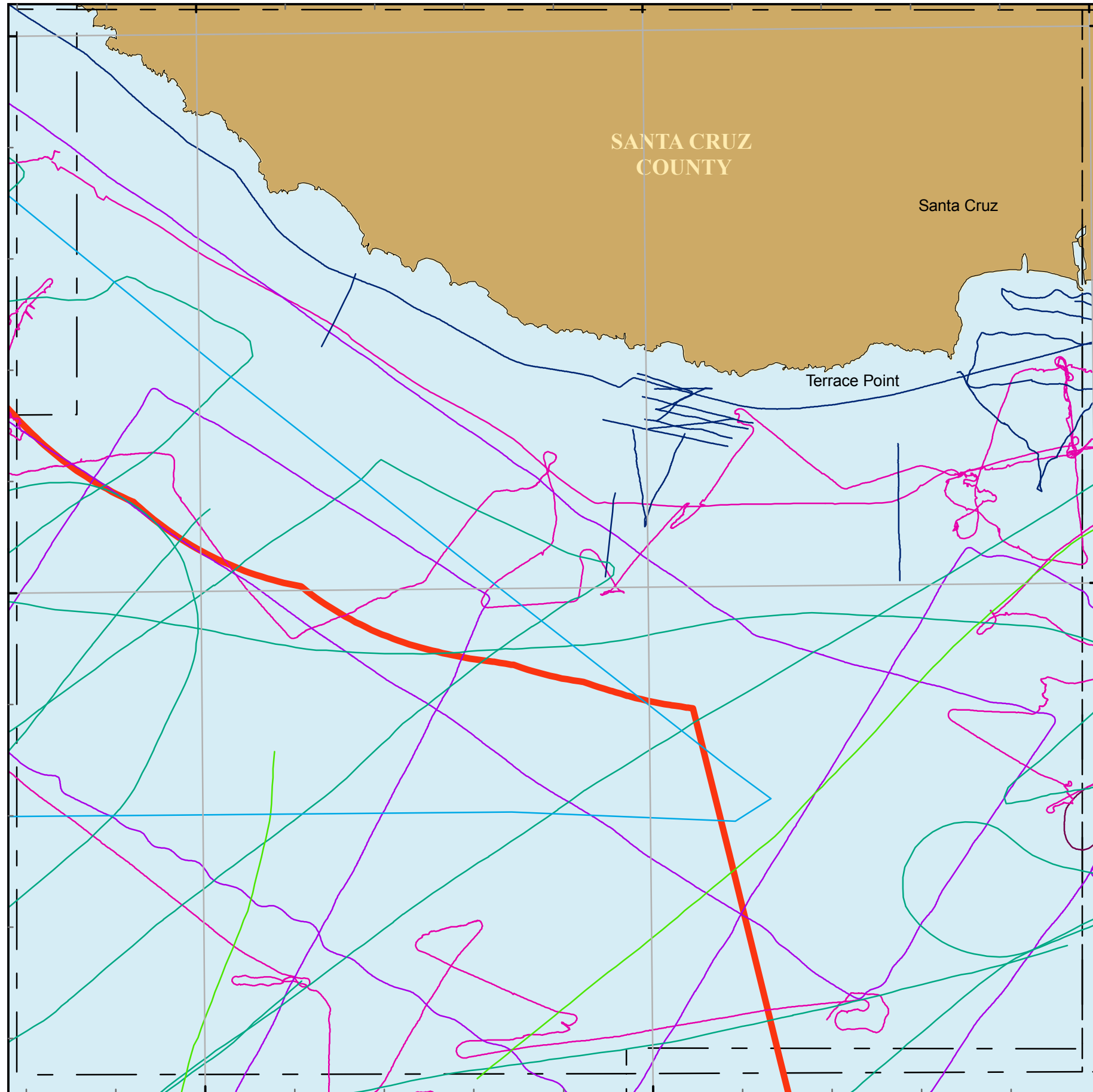
122°10'W

122°5'W

122°W

37°N

36°55'N



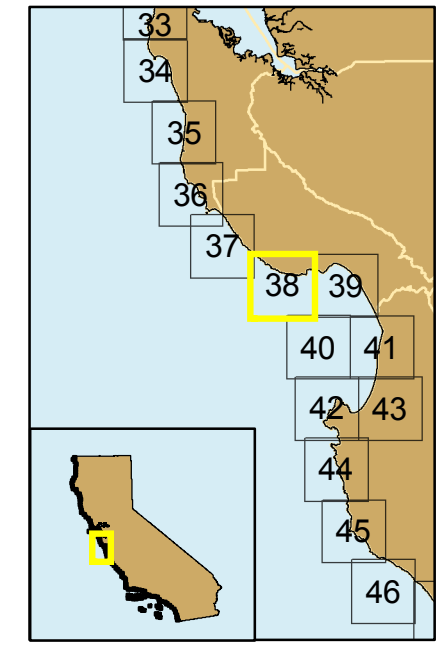
Projection: UTM Zone 10 Datum: WGS84 Map Scale: 1:75,000



Block 38 C

### Seismic Reflection Data in California State Waters Block 38 C

- F-6-87-NC
- L-2-90-NC
- L-3-90-NC
- J-1-94-MB
- M4-97-MB
- M-1-95-MB
- P-3-95-MB
- 3-nm limit
- Map Blocks
- County Line



Cruise ID	Chief Scientist	Dates	Source	Frequency	Digital	Analog
F-6-87-NC	McCulloch/Lewis	11/10/1987 to 11/24/1987	24channel, airgun, watergun		No	Yes
L-2-90-NC	Childs	04/17/1990 to 04/23/1990	uniboom, airgun, 24channel	3.5kHz, 12kHz	No	Yes
L-3-90-NC	Mann/Lewis	04/23/1990 to 05/09/1990	airgun, 24channel,	3.5kHz, 12kHz	Yes	Yes
J-1-94-MB	Anima/Trait	02/28/1995 to 03/11/1994	geopulse			Yes
M-1-95-MB	Pickett/Jackson	04/02/1995 to 04/13/1995	uniboom		No	Yes
P-3-95-MB	Scholl/Sullivan	09/27/1995 to 09/27/1995	uniboom,			Yes
M-4-97-MB	Edwards/Anima	09/09/1997 to 09/17/1997	huntec, uniboomer	3.5kHz, 12kHz	Yes	Yes

