

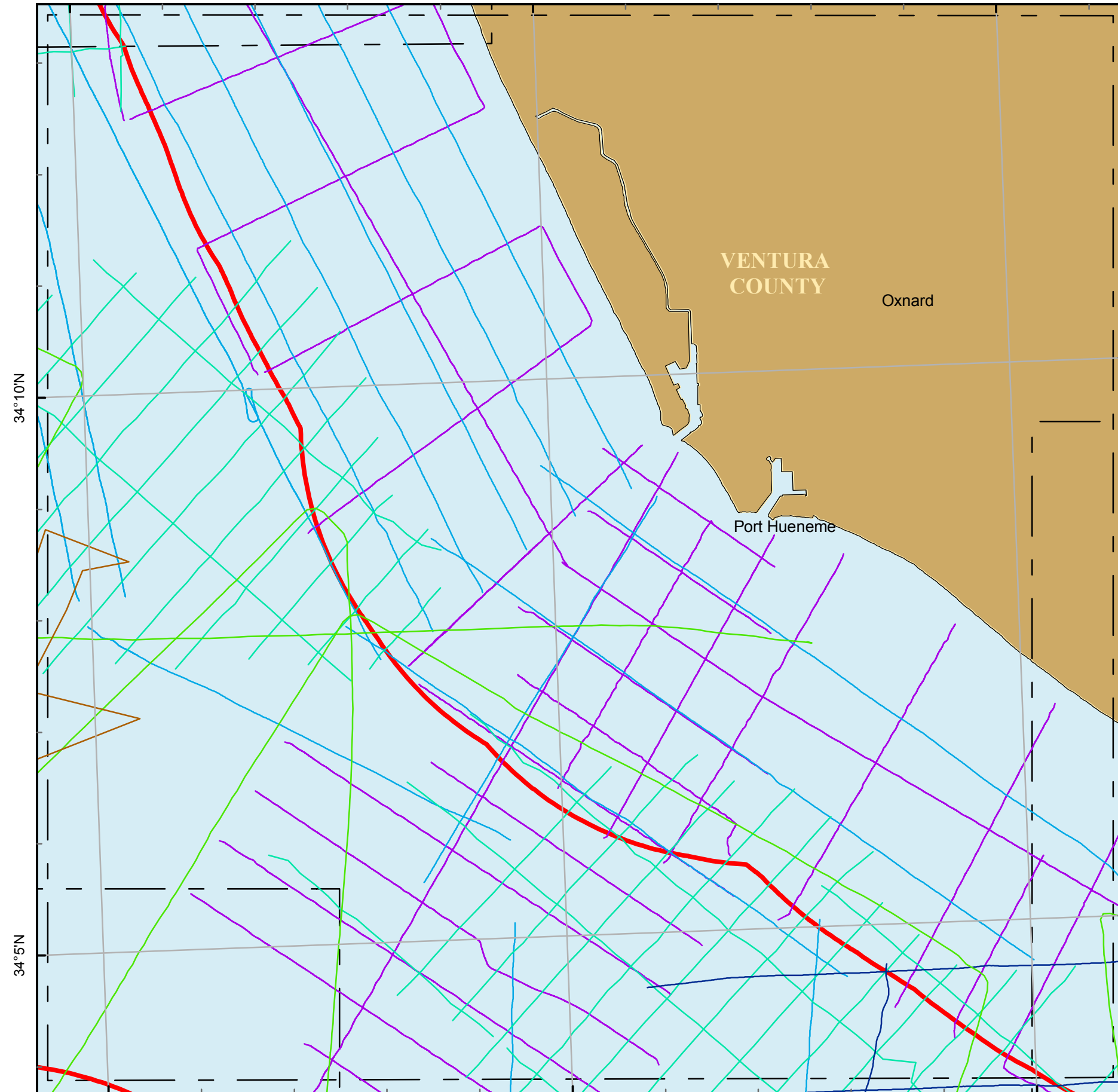
119°20'W

119°15'W

119°10'W



Block 67 C



34°10'N

34°5'N

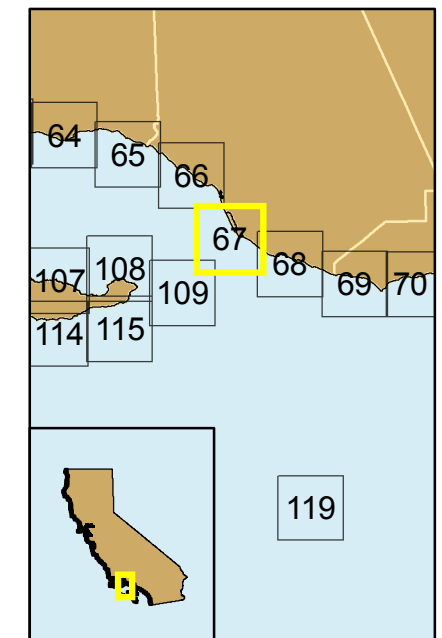
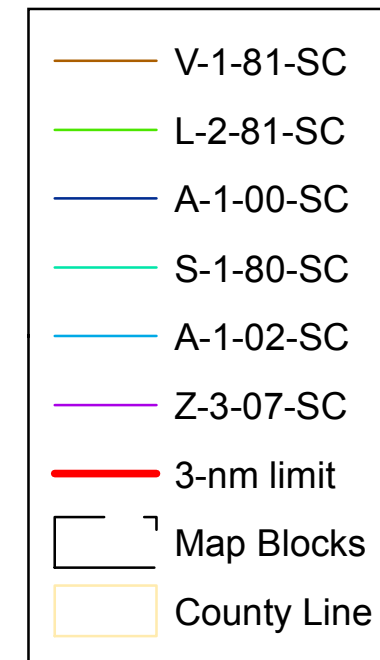
VENTURA COUNTY

Oxnard

Port Hueneme

Projection: UTM Zone 10 Datum: WGS84 Map Scale: 1:75,000

### Seismic Reflection Data in California State Waters Block 67 C



Cruise ID	Dates	Chief Scientist	Source	Frequency	Digital	Analog
S-1-80-SC	10/00/1980 to 02/00/1981	Minerals Management Service	sparker, minisparker		yes	no
L-2-81-SC	04/05/1981 to 04/14/1981	Edwards/Field	airgun, uniboom,	3.5kHz, 12kHz	no	yes
V-1-81-SC	08/24/1981 to 08/30/1981	Edwards/Field	minisparker, uniboom	3.5kHz	no	yes
A-1-00-SC	06/05/2000 to 06/29/2000	Gutmatcher/Ross/Edwards	uniboom, geopulse, huntec, sparker, minisparker, 24channel	12kHz	yes	yes
A-1-02-SC	06/14/2002 to 06/29/2002	Gutmatcher/ Fisher	airgun, minisparker, chirp, boomer, sparker	12kHz	yes	yes
Z-3-07-SC	09/12/2007 to 09/27/2007	Hart	chirp, minisparker		yes	no

