



US Army Corps
of Engineers®
Los Angeles District

Virgin River Watershed Analysis

May 24, 2007- Mesquite, NV

Needs Analysis

Review ongoing work.

Identify: reports, projects and contacts.

Define unmet needs/gaps.



US Army Corps
of Engineers®
Los Angeles District

Observations

Huge amount of information



Numerous efforts throughout watershed

No simple summary

Challenges to collaboration (time/boundaries)



US Army Corps
of Engineers®
Los Angeles District

Focus Areas

Floodplain Management

Invasive Species

Land Use Planning

Threatened & Endangered Species

Water Supply



US Army Corps
of Engineers®
Los Angeles District

Floodplain Management

13+ reports

St. George vicinity, Mesquite dominant

Floodplain Strategy-additional information

Gaps: Watershed outside most populous cities





US Army Corps
of Engineers®
Los Angeles District

Invasive Species

Tamarisk - BLM, NPS, Washington Co.

More info in toolbox

Cheat Grass - Potential transferable research from Great Basin to consider.



US Army Corps
of Engineers®
Los Angeles District

Land Use Planning

Land Management Agency Plans- BLM, NPS, FS

Vision Dixie – Washington County

Local Land Use Plans

Incorporate goals into watershed strategy as applicable?



US Army Corps
of Engineers®
Los Angeles District

T&E Species

Virgin River Program

Virgin River HCP

40+ reports

Gaps: ? - Channel maintenance/ **river function**



US Army Corps
of Engineers®
Los Angeles District

Water Supply/Quality

Incorporate water supply/quality issues?

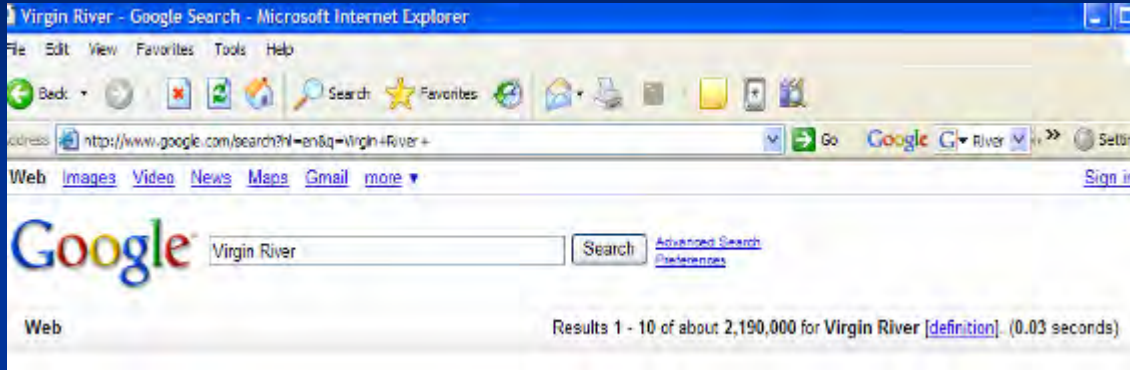
To what extent?

Unmet needs?



US Army Corps
of Engineers®
Los Angeles District

Products



Is it transferable?

Who makes updates?

How is it most useful?

Recommendation: Listing of Projects, Programs, and Contacts for Ongoing Communication