

# Opportunities for Taking Stock 2001

**Sarah Rang, Catherine Miller,  
Isabel Kreiner**

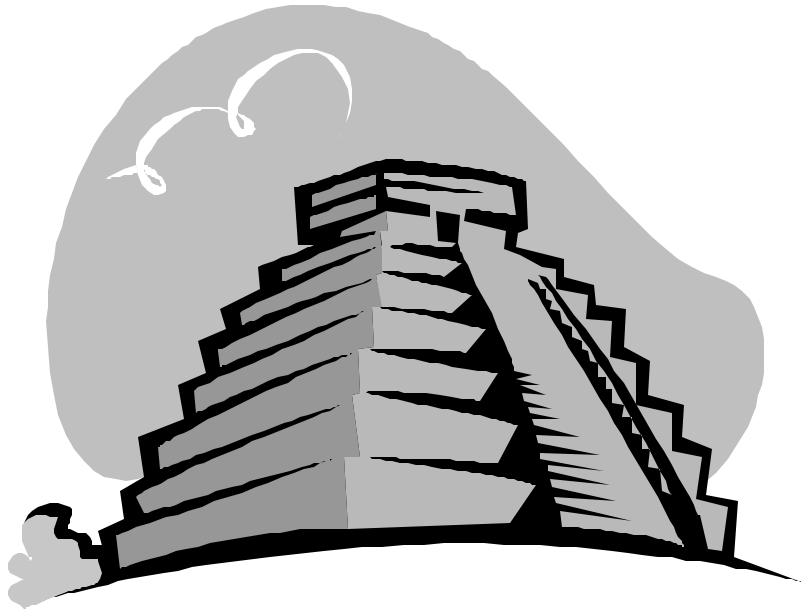
# Opportunities for Taking Stock 2001

- 1. Highlighting Mexico's Progress**
- 2. Lead : Trends and Challenges**
- 3. Reasons behind the data**
- 4. Watershed analysis**
- 5. Your ideas**

# Opportunity 1: Highlighting Mexico's Progress

- **Provide a summary of progress**
- **Use examples of progress and activities**
- **Highlight state activities and data**
- **Present current year RETC data**

# Questions?



- **Any particular activities that could be profiled?**
- **Any groups interested in sharing their progress?**

# Opportunity Two: Lead: Trends and Challenges

- **TRI has lowered threshold for lead in 2001**
- **NPRI lowered threshold in 2002**
- **Discuss sources, pathways and health and environmental effects of lead**
- **Present sectors, facilities and trends**
- **Present examples of lead reductions**

# Questions?

- **What types of analyses would be of interest?**
- **What activities could be included?**
- **Any groups interested in sharing examples?**



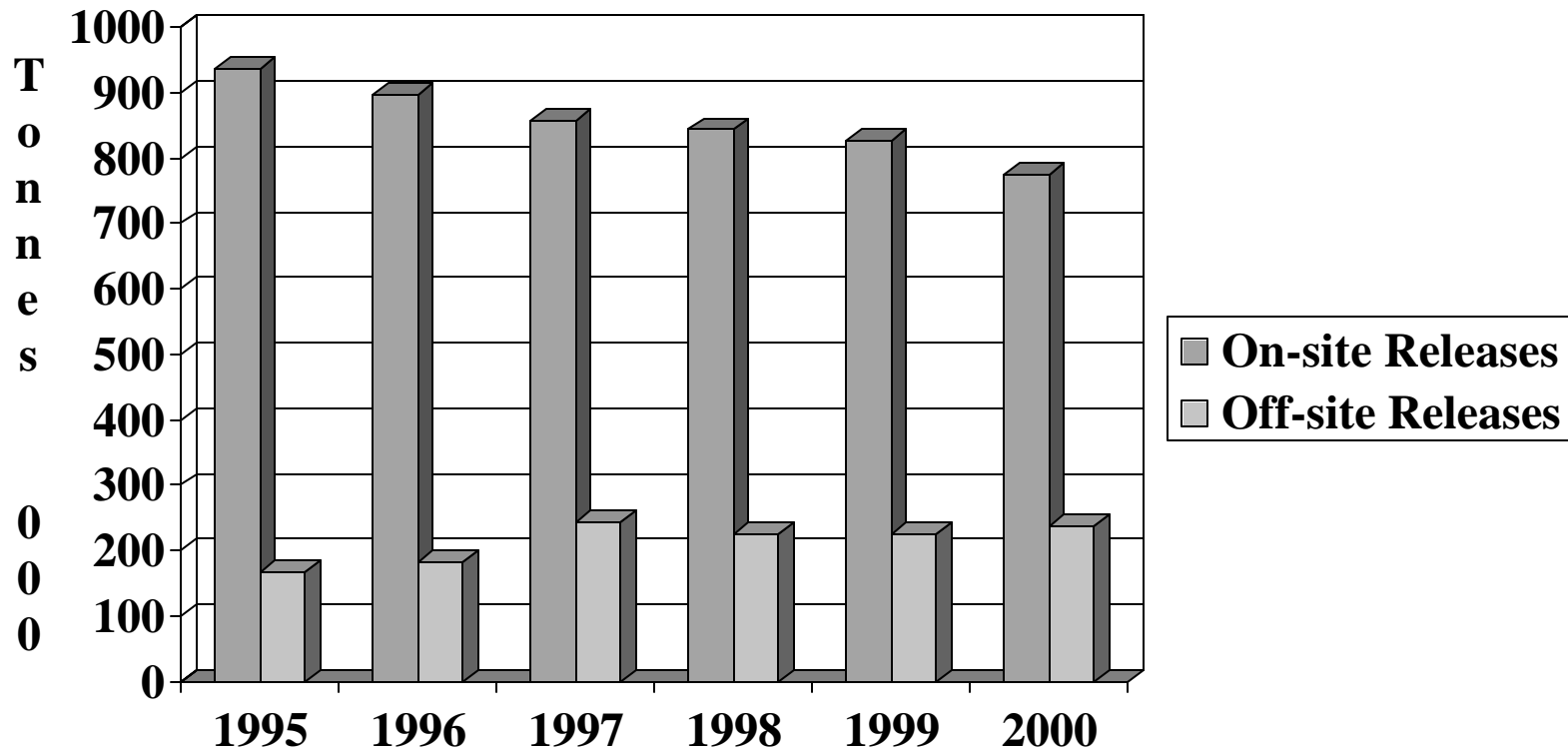
# Opportunity 3: Reasons Behind Data

**Further explore “Why?” questions:**

- **Why are on-site releases decreasing?**
- **Why are off-site releases increasing?**
- **Why are average releases/transfers changing?**
- **Why do facilities reporting smaller amounts show different patterns ?**

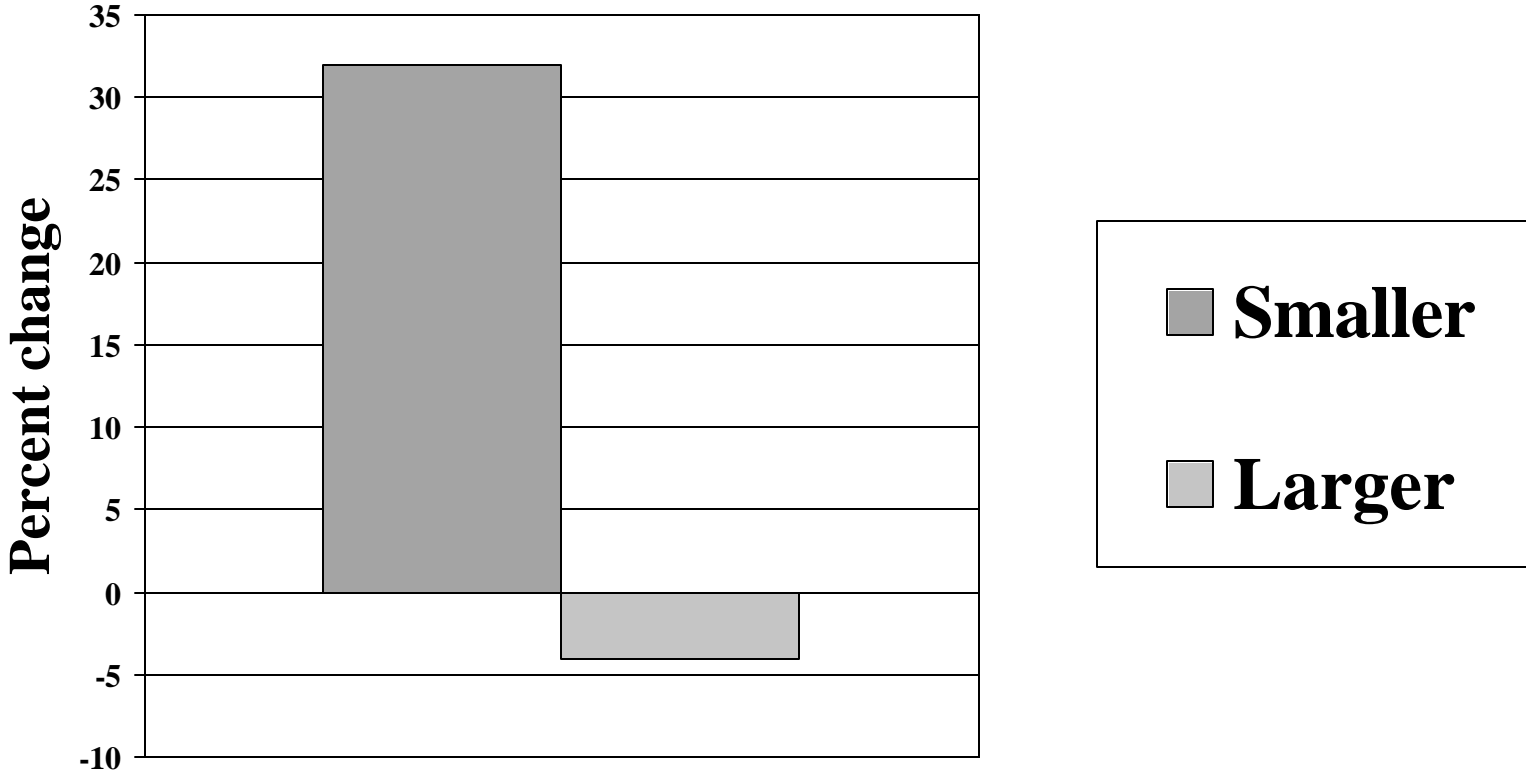
# Time Trend

## Total Releases and Transfers- 1995-2000





# Facilities Reporting Smaller and Larger Total Releases and Transfers-1998-2000

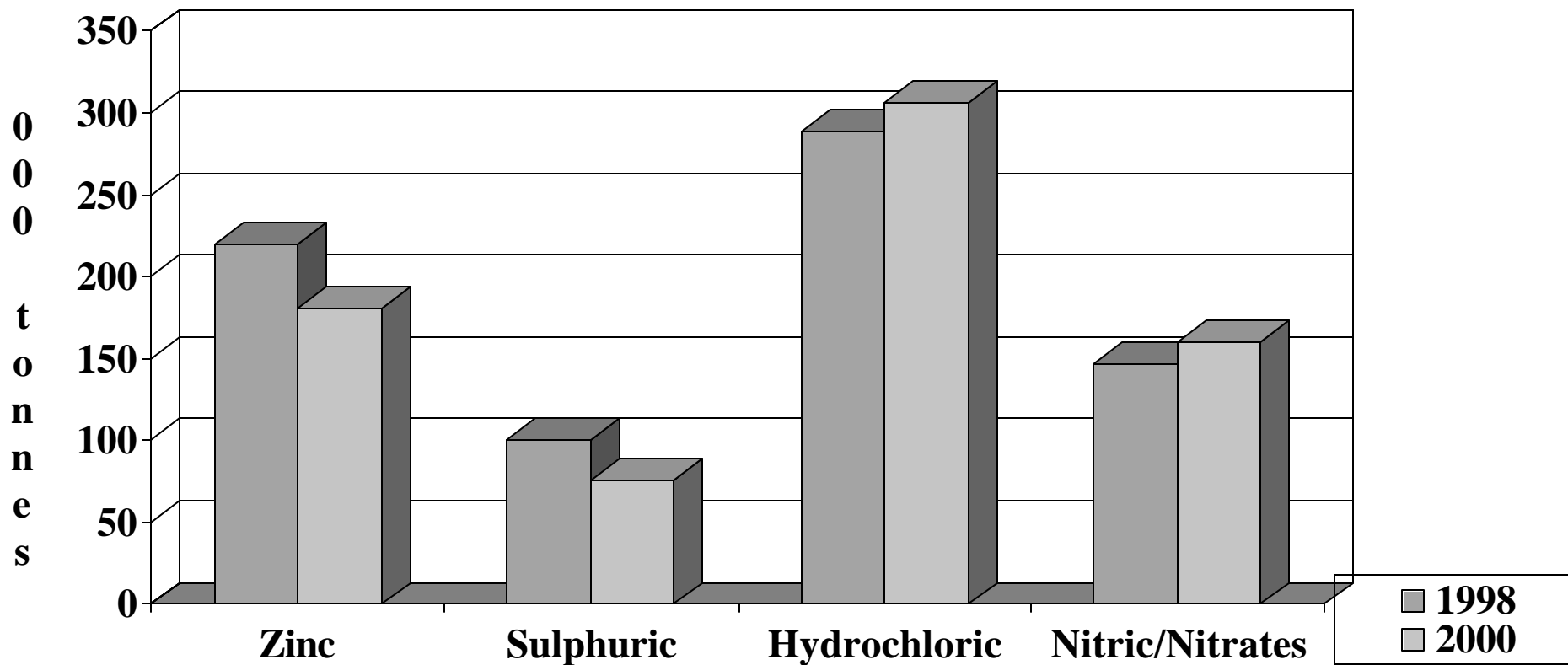


## Reasons ( cont' d)

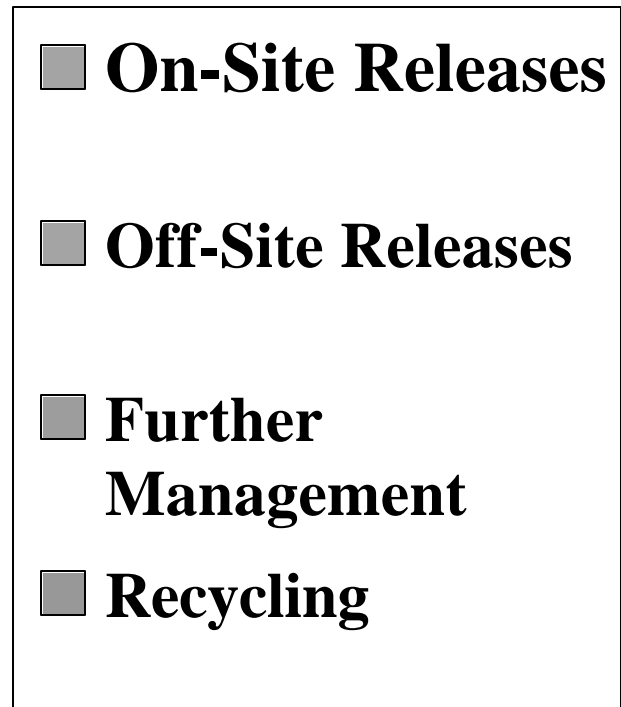
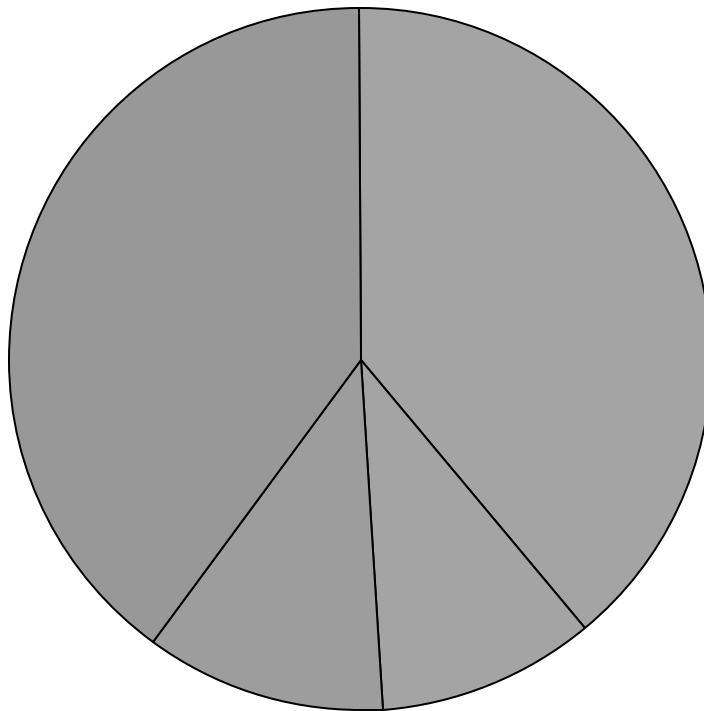
- **Why do some chemicals show such large changes from year to year?**
- **Why do NPRI facilities tend to release more chemicals on-site?**
- **Why do TRI facilities tend to transfer more chemicals off-site for further management?**

# Changes in Chemicals

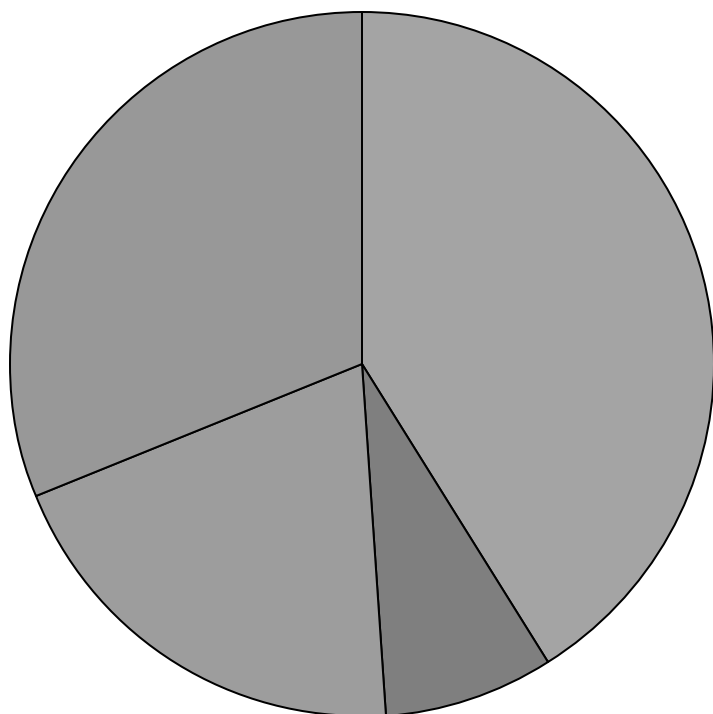
Total releases 1998-2000



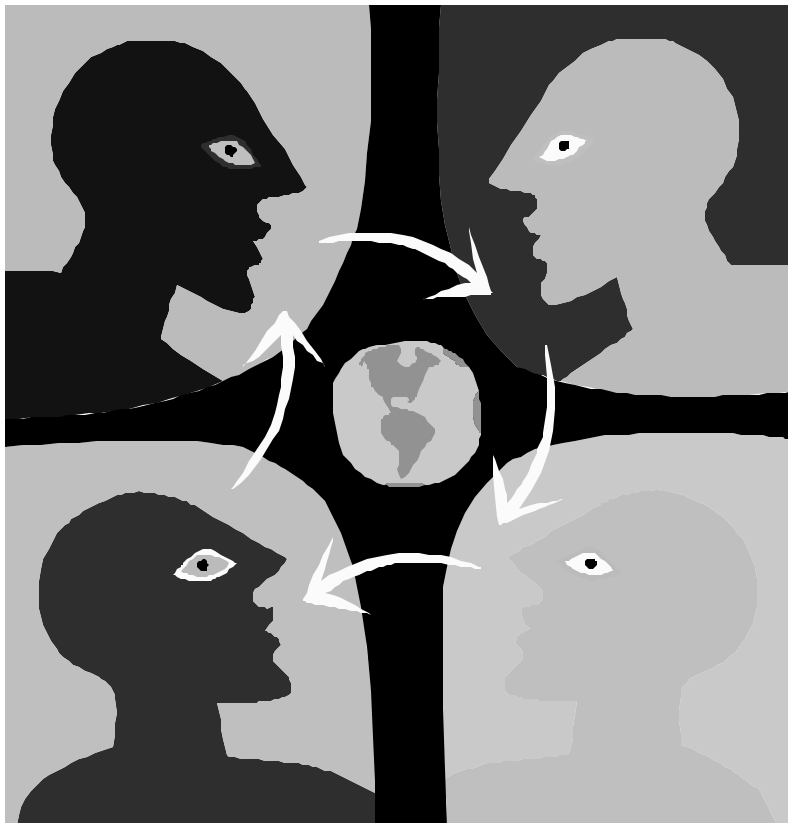
# NPRI- Total Releases and Transfers- 2000 (312,123 tonnes)



# TRI- Total Releases and Transfers-2000 (3,002,105 tonnes)



# Questions?

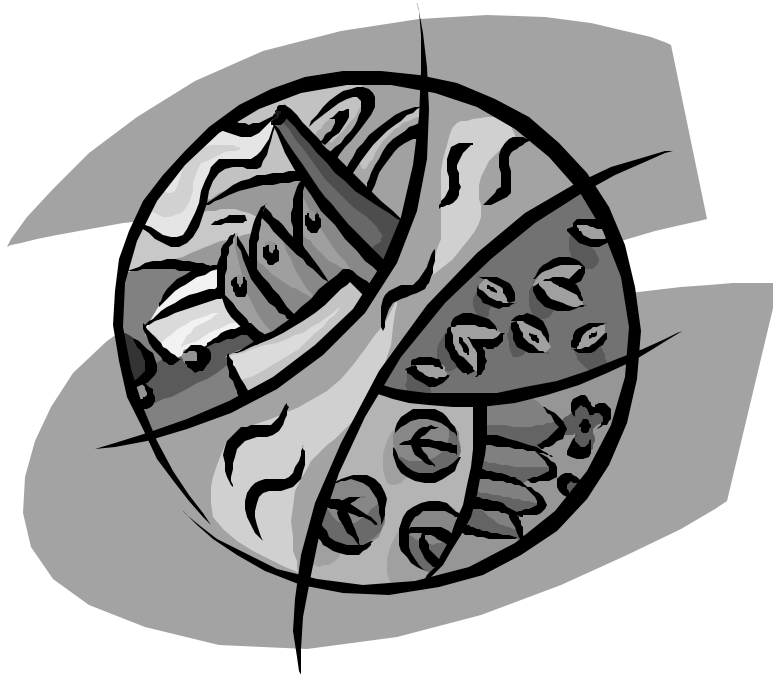


- Which of these findings would be of particular interest?
- Any group interested in sharing their knowledge of changes?
- Other?

# Opportunity 4: Watershed or Ecoregion Analysis

- **Analyze PRTR data based on a watershed basis**
- **Look at trends, chemicals, sectors and facilities in water shed**
- **Possibilities: Great Lakes, Columbia River, Mississippi, CEC areas such as Gulf of Maine, Bight of California**

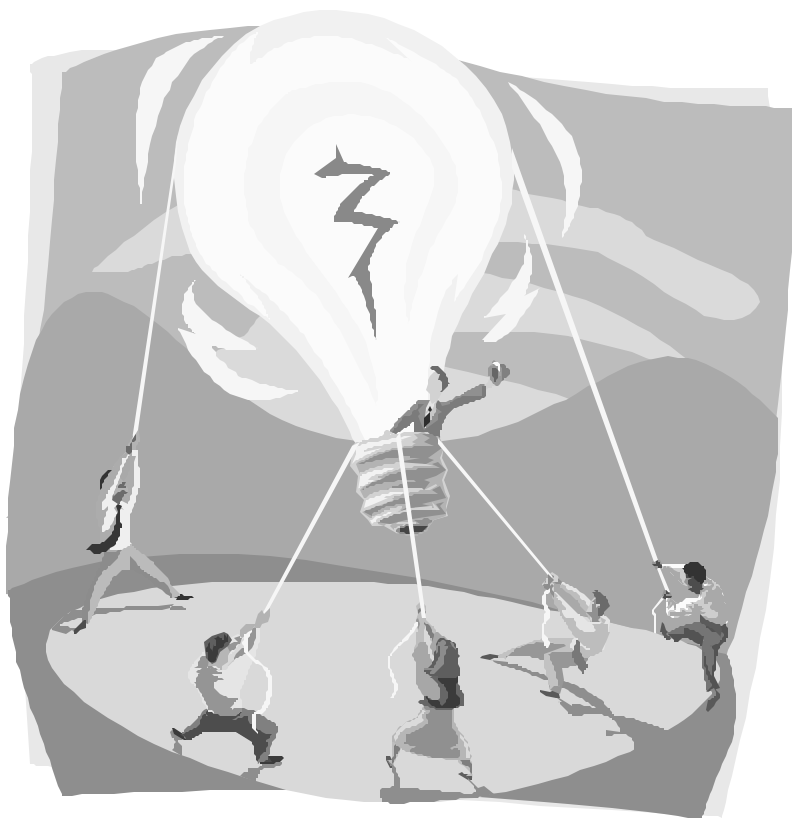
# Questions?



- Which watershed of interest?
- What analyses of interest?
- Other?



# Opportunity 5: Your Ideas



- **Any analyses of interest?**
- **Any linkages of interest?**
- **Any feedback on report format and website?**
- **Comment to CEC in writing by 18 November**