



Cal/EPA Border Affairs Unit

The CEC EMS Pilot Project in the California – Baja California Border Region

Chris Marxen
Program Manager
California Environmental Protection
Agency
Border Affairs Unit



Cal/EPA Border Affairs Unit

*The CEC EMS Pilot Project in the California –
Baja California Border Region*

History of EMS Programs in California

In 1998, the California Environmental Protection Agency (Cal/EPA) established an *Innovation Initiative* as a response to the growing international interest in achieving a sustainable global environment.

Because of the significant policy implications of the *Innovation Initiative*, the Legislature authorized the Cal/EPA to establish up to eight pilot projects with which to evaluate the potential of EMS in California.



Cal/EPA Border Affairs Unit

*The CEC EMS Pilot Project in the California –
Baja California Border Region*
History of EMS Programs in California

The (Historical) Pilot Project

Seven Industries Selected:

1. Anheuser-Busch Brewery, Fairfield
2. Two publicly owned wastewater treatment facilities
3. IBM Corporation, San Jose
4. Lockheed Martin Aeronautics Company, Palmdale
5. Two metal finishing facilities (one did not complete the project)
6. Pentel of America, Ltd., Torrance
7. Two Sonoma County wineries



Cal/EPA Border Affairs Unit

*The CEC EMS Pilot Project in the California –
Baja California Border Region*
History of EMS Programs in California

The (Historical) Pilot Project (cont)

Findings:

- Significant improvements in environmental protection were observed in most of the pilot projects.
- Improved systems for managing environmental impacts were observed in many of the pilot projects.
- Some improvement in environmental performance was observed at all pilots reporting performance data.



Cal/EPA Border Affairs Unit

*The CEC EMS Pilot Project in the California –
Baja California Border Region
History of EMS Programs in California*

The (Historical) Pilot Project (cont)

Findings (cont):

- EMS implementation can be especially challenging to small and medium sized enterprises (SMEs).

One challenge is the significant economic and human resources needed to develop, implement and maintain an EMS.



Cal/EPA Border Affairs Unit

*The CEC EMS Pilot Project in the California –
Baja California Border Region*

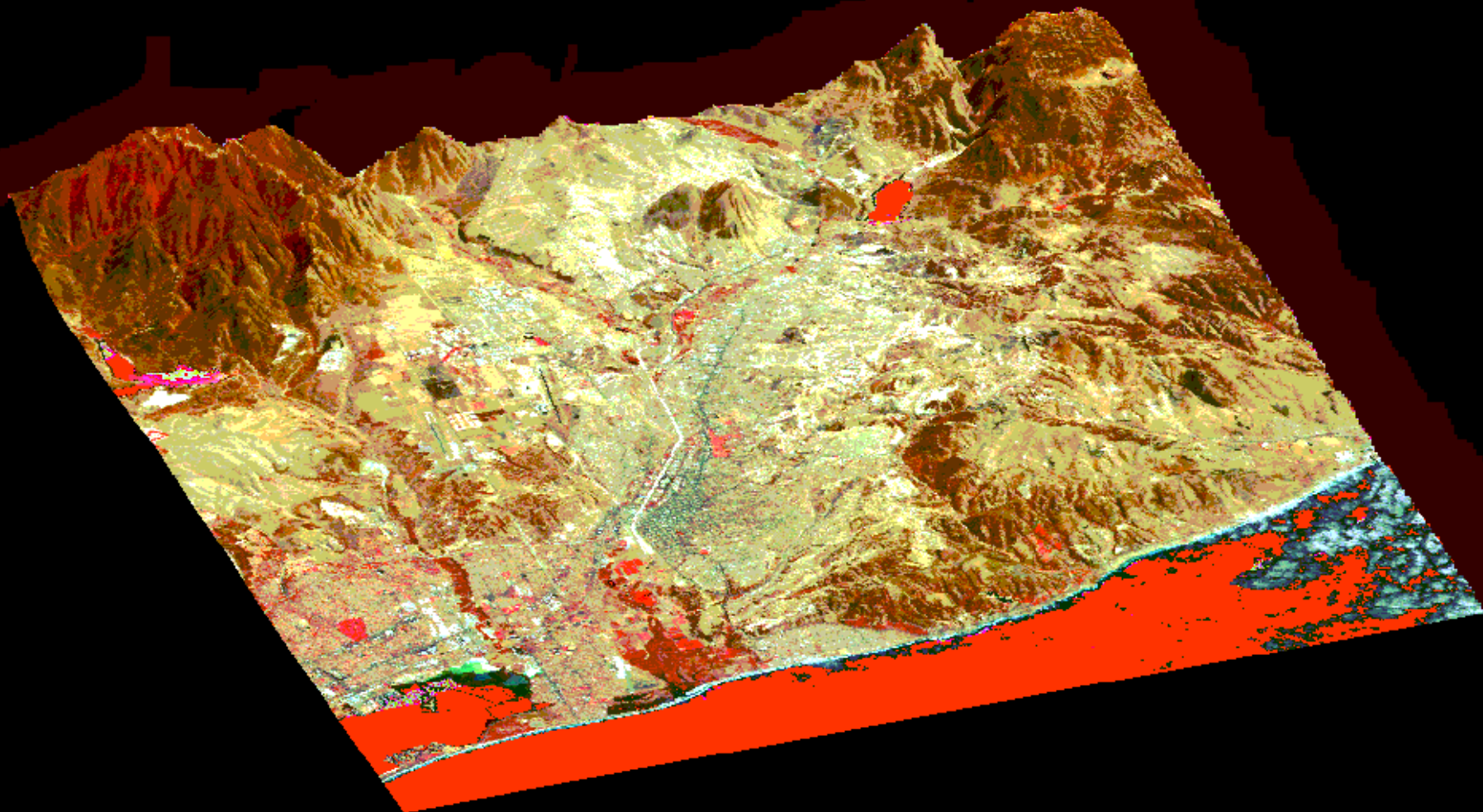
The Border Environmental Program EMS Project

USEPA Grant

Past Programs

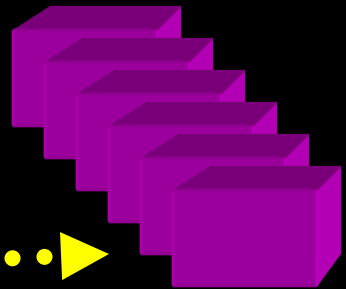
What We Want to Accomplish





San Diego - Tijuana

Cottage Industries



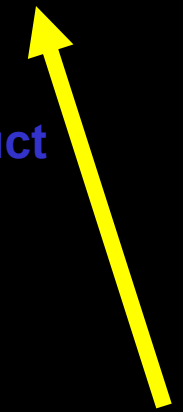
Sub-Assemblies



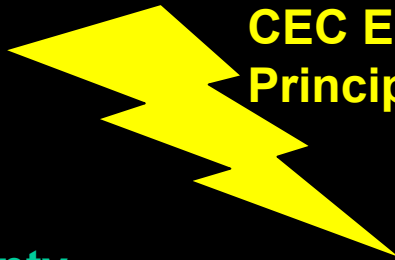
Medium - Large
Businesses



Finished Product



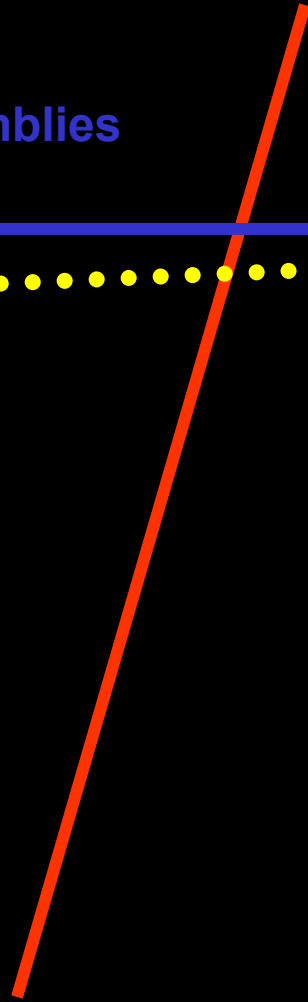
CEC EMS
Principles



San Diego County

Tijuana B.C.

Implementation Plan





Cal/EPA Border Affairs Unit

*The CEC EMS Pilot Project in the California –
Baja California Border Region*
**The Border Environmental Program
EMS Project (cont)**

Success Indicators:

- *Compliance*
- *Energy Usage*
- *Discharges*
- *Economic Success*





Cal/EPA Border Affairs Unit

*The CEC EMS Pilot Project in the California –
Baja California Border Region*
**The Border Environmental Program
EMS Project (cont)**

Supplementary Goals:

- *Development of Environmental Technology Industries*
- *Coordination with U.S. EPA / SEMARNAT Border 2012 Program*
- *Improvement of Environmental Infrastructure*
- *Cleanup of Neighborhoods*