

NOTICE

Mention of a commercial company or product does not constitute an endorsement by NOAA Office of Oceanic and Atmospheric Research. Use for publicity or advertising purposes of information from this publication concerning proprietary products or the tests of such products is not authorized.

Preface

The Climate Monitoring and Diagnostics Laboratory (CMDL) is located in Boulder, Colorado, with Baseline Observatories in Barrow, Alaska; Trinidad Head, California; Mauna Loa, Hawaii; Cape Matatula, American Samoa; and South Pole, Antarctica. It is one of twelve research components within the Office of Oceanic and Atmospheric Research (OAR) of the National Oceanic and Atmospheric Administration (NOAA). CMDL conducts research related to atmospheric constituents capable of forcing change in the climate of the Earth through modification of the atmospheric radiative environment, for example, greenhouse gases and aerosols, and those that can cause depletion of the global ozone layer, e.g., chlorine- and bromine-containing compounds. The Trinidad Head Observatory was added in April 2002 to provide information on atmospheric composition and air quality in air flowing onto the west coast of the United States.

This report is a summary of CMDL activities for calendar years 2002 and 2003. It is the 27th consecutive report issued by this organization and its Geophysical Monitoring for Climatic Change predecessor since formation in 1972. From 1972 through 1993 (numbers 1 through 22), reports were issued annually; thereafter, the reports were issued on a biennial basis. At CMDL's Internet home page (www.cmdl.noaa.gov) you will find information about our major groups and observatories, the latest events and press releases, publications, data availability, and personnel. Numerous data graphs and ftp data files are available. Information (program descriptions, accomplishments, publications, plans, data access, etc.) on CMDL parent organizations can best be obtained via the Internet (OAR: www.oar.noaa.gov; NOAA: www.noaa.gov).

This report is organized into the following major sections:

1. Observatory Operations and Meteorology
2. Carbon Cycle
3. Aerosols and Radiation
4. Ozone and Water Vapor
5. Halocarbons and other Atmospheric Trace Species
6. Cooperative Programs

These are followed by a list of CMDL staff publications for 2002-2003.

Inquiries and/or comments should be addressed to:

Director, R/CMDL
NOAA/Climate Monitoring and Diagnostics Laboratory
325 Broadway
Boulder, CO 80305-3328
(303) 497-6074

or

Russell.C.Schnell@noaa.gov

Contents

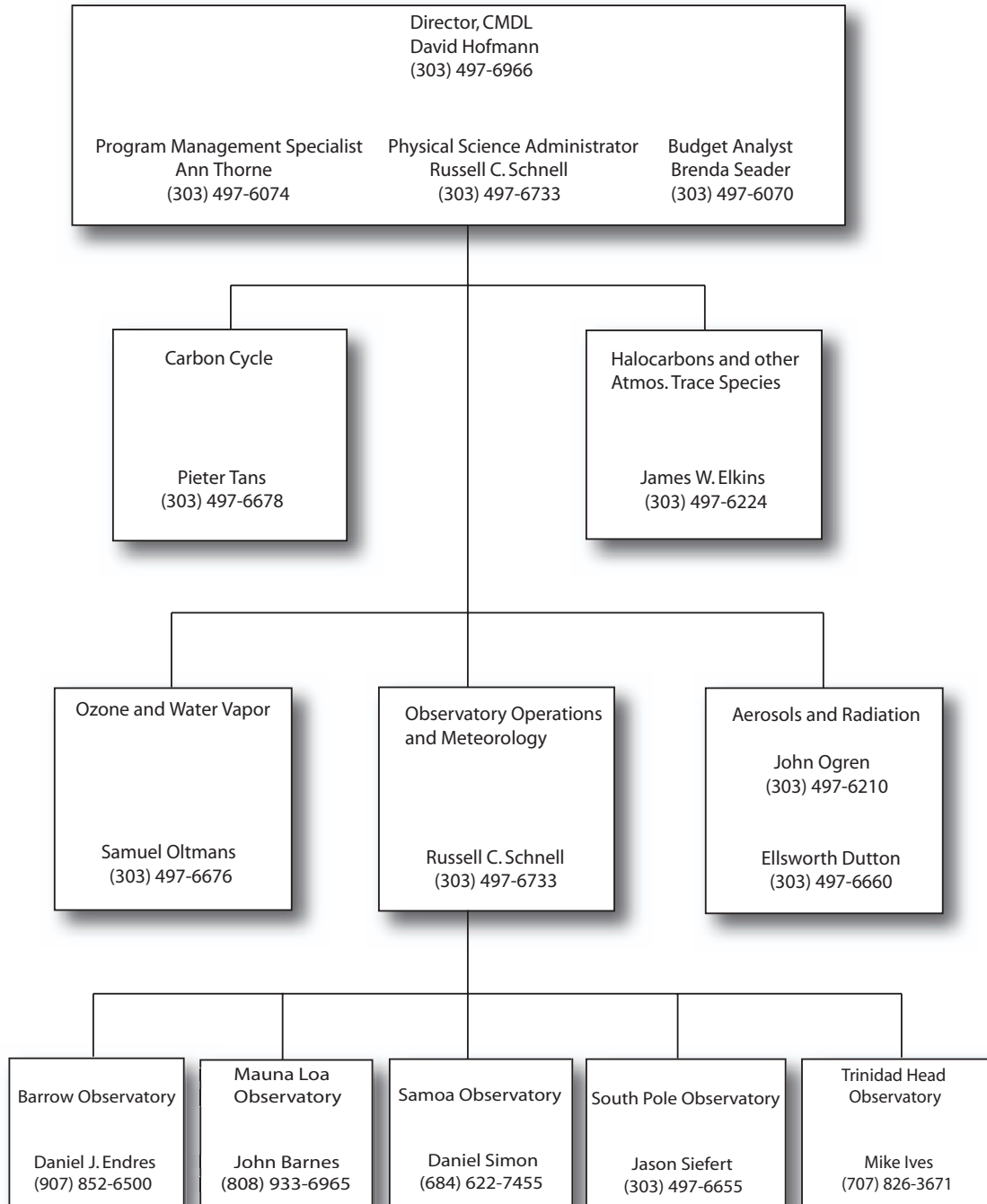
Preface.....	iii
Contents	v
CMDL Organization, 2003	viii
CMDL Staff, 2003	ix
CMDL Station Information	x
1. Observatory Operations and Meteorology.....	1
1.1. Mauna Loa Observatory	1
1.1.1. Operations.....	1
1.1.2. Programs	2
1.2. Barrow Observatory.....	6
1.2.1. Operations.....	6
1.2.2. Programs	7
1.3. Samoa Observatory	9
1.3.1. Operations.....	9
1.3.2. Programs	11
1.4. South Pole Observatory	13
1.4.1. Operations.....	13
1.4.2. Programs	14
1.5. Trinidad Head Station.....	16
1.5.1. Operations.....	16
1.5.2. Programs	18
1.6. Meteorological Measurements.....	20
1.6.1. Meteorology Operations	20
1.6.2. Station Climatologies.....	20
1.7. References.....	31
2. Carbon Cycle Greenhouse Gases.....	32
2.1. Carbon Dioxide.....	32
2.1.1. In situ CO ₂	32
2.1.2. Flask Sample Carbon Dioxide Measurements.....	33
2.1.3. The Carbon Dioxide Calibration Scale and Reference Gas Calibrations	36
2.1.4. Isotopes of Greenhouse Gases	37
2.2. Methane, Nitrous Oxide and Sulfur Hexafluoride.....	40
2.2.1. In Situ Methane Measurements	40
2.2.2. Measurements of Methane in Discrete Samples.....	41
2.2.3. Nitrous Oxide and SF ₆ Measurements	42
2.3. Carbon Monoxide	42
2.3.1. Measurements of Carbon Monoxide.....	42
2.3.2. CO Reference Gases	44
2.4. Measurements On Tall Towers.....	44
2.5. Data Integration (GLOBALVIEW).....	46
2.6. A Web-Based Interactive Atmospheric Data Visualization Tool: Near Real-Time Access to Data from the CMDL CCGG Observing Network	48
2.7. Aircraft Sampling Program.....	49
2.8. Atmospheric Transport Modeling and Model-Data Synthesis	51
2.8.1. The Fixed-Lag Kalman Smoother	51
2.8.2. Modeling Atmospheric Transport with a Nested-Grid Model: Implications for Inversions of Trace Species	51

2.8.3. Use of Geostatistical Inverse Modeling for Constraining Budgets of Atmospheric Trace Gases	53
2.8.4. An Application: Bayesian Inverse Modeling of Global Nitrous Oxide Surface Fluxes.....	54
2.8.5. Summary	55
2.9. References	55
3. Aerosols and Radiation	58
3.1. Aerosol Monitoring.....	58
3.1.1. Scientific Background.....	58
3.1.2. Experimental Methods.....	59
3.1.3. Annual Cycles.....	59
3.1.4. Long-Term Trends.....	65
3.1.5. Special Studies.....	66
3.2. Solar and Thermal Atmospheric Radiation	76
3.2.1. Radiation Measurements.....	76
3.2.2. Solar Radiation Facility	81
3.2.3. Baseline Surface Radiation Network	81
3.2.4. Data processing.....	81
3.2.5. Spectral UV Measurements	82
3.2.6. Applications and Results from STAR Research.....	84
3.2.7. References.....	94
4. Ozone and Water Vapor.....	97
4.1. Continuing Programs	97
4.1.1. Total Ozone Observations	97
4.1.2. Umkehr Observations	98
4.1.3. Calibration of Dobson Spectrophotometers.....	98
4.1.4. Surface Ozone.....	99
4.1.5. Ozonesondes	101
4.1.6. Atmospheric Water Vapor	102
4.1.7. Atmospheric Transport	103
4.1.8. Stratospheric Aerosols	103
4.2. Special Projects.....	104
4.2.1. Water Vapor Instrument Development.....	104
4.2.2. Arctic Water Vapor Measurements	105
4.2.3. Stratospheric water vapor campaigns	107
4.2.4. Sensitivity of Isentropic and 3-D Trajectories to Temporal Interpolation.....	109
4.2.5. Tropospheric Ozone at Trinidad Head, California	112
4.3. References.....	113
5. Halocarbons and other Atmospheric Trace Species	115
5.1. Overview.....	115
5.2. Flask Sample Programs	115
5.2.1. Overview.....	115
5.2.2. GC-ECD Results.....	117
5.2.3. GC-MS Analysis of Flasks	118
5.2.4. Trends in Chlorinated Gases and Total Chlorine from Flask and In Situ ECD Instruments.....	119
5.2.5. Trends in Brominated Gases and Total Bromine from Flask Measurements.....	120
5.2.6. Trends in Equivalent Chlorine.....	122
5.2.7. Analysis of Calibration Tanks on The Flask GC-MS.....	122
5.2.8. Analysis of Firm Air	122
5.3. In Situ Gas Chromatograph Program.....	123
5.3.1. CATS Program	123

5.3.2. The RITS Dataset.....	124
5.4. Gravimetric Standards	126
5.4.1. Improvements in N ₂ O analysis	126
5.4.2. Calibration Scales	126
5.5. Airborne Projects	127
5.5.1. ACATS-IV, LACE, and PANTHER Gas Chromatographs	127
5.5.2. Monitoring of Stratospheric Chlorine and Bromine	128
5.5.3. 2003 COBRA-NA.....	129
5.5.4. 2003 SOLVE-II.....	129
5.6. Special Project—In Situ Gas Chromatography	131
5.6.1. Mass Selective Detector System.....	131
5.6.2. Development of Key Systems.....	132
5.6.3. Testing of Adsorbent Trapping Materials.....	132
5.6.4. Scientific Issues Regarding the Choice of Deployment Location	132
5.7. References.....	133
6. Cooperative Programs.....	136
Facilitating a View of Energy Deposition in the Neutral Atmosphere	
<i>G. Anderson, A. Berk, J. Harris, E. Dutton, A. Jordan, R. Stone, E. Andrews, and E. Shettle</i>	136
UV Spectroradiometer Monitoring Program: Spectral Global Irradiance and Total Column	
Ozone Measurements at South Pole and Barrow	
<i>G. Bernhard, C.R. Booth, and J.C. Ehranjian</i>	139
Global Positioning System Measurements of Water Vapor, Barrow, Alaska	
<i>J.T. Freymueller</i>	142
Microclimate Data from an Evapotranspiration Station at Cape Matatula, Tutuila, American Samoa	
<i>S.K. Izuka, T.W. Giambelluca, M.A. Nullet, and F.O. Asalele, Jr.</i>	144
Rosby Wave Breaking over Mauna Loa Observatory, Hawaii, During Summer 2002	
<i>T. Leblanc, I.S. McDermid, and A. Hauchecorne</i>	148
Artificial Windshielding of Precipitation Gauges in the Arctic	
<i>R.J. McClure</i>	151
Investigation of Chemical Transfer Processes between Atmosphere and Snow at South Pole	
<i>J.R. McConnell and R.G. Bales</i>	153
Measurement of Net Ecosystem CO ₂ Exchange Using Eddy Covariance Technique in Arctic	
Wet Coastal Sedge Tundra	
<i>W.C. Oechel, H. Kwon, S. Running, and F.-A. Heinsch</i>	155
Advanced Global Atmospheric Gases Experiment (AGAGE)	
<i>R.G. Prinn, R.F. Weiss, D.M. Cunnold, P.J. Fraser, and P.G. Simmonds</i>	158
Results from Simultaneously Measured Aerosol Chemical and Optical Properties at	
Barrow, Alaska	
<i>P.K. Quinn, J.A. Ogren, E. Andrews, and G.E. Shaw</i>	161
University of Denver Fourier Transform Spectrometer	
<i>R. Van Allen, F.J. Murcray, R.D. Blatherwick, and T.M. Stephen</i>	164
7. Publications by CMDL Staff, 2002-2003	165
8. Specialized Abbreviations and Acronyms	170

CMDL Organization, 2003

The CMDL organization structure features five research areas organized according to scientific discipline as follows: (1) Carbon Cycle; (2) Halocarbons and other Atmospheric Trace Species; (3) Ozone and Water Vapor; (4) Aerosols and Radiation; and (5) Observatory Operations. At the end of 2003, the laboratory staff consisted of 51 Civil Service personnel (excluding part-time Physical Science Technicians), 37 CIRES/University of Colorado personnel, and 2 NOAA Corps officers, as well as several contractors, visitors, and people on special appointments.



CMDL Staff, 2003

Director's Office

David J. Hofmann, Director
Russell C. Schnell, Phys. Sci. Admin.
Ann Thorne, Pgm. Mgmt. Specialist
Beverly O'Donnell, Admin. Assistant
Debra Lucas, Admin. Assistant
Brenda Seader, Budget Analyst
Rita Rosson, Editorial Assistant
Anna-Marie Buggle, CIRES

Special Projects

Eric Hackathorn, IT Specialist

Aerosols and Radiation

Ellsworth Dutton, Supv. Meteorologist
John Ogren, Phys. Scientist
Connie Craig, Secretary
Debbie Creasey, Secretary
Gail Anderson, USAF
Elisabeth Andrews, CIRES
Gregory Bland, Phys. Sci. Tech.
Gloria Carbaugh, Phys. Scientist
Micah, Farfor, CIRES Student
David Jackson, Contractor
Anne Jefferson, CIRES
Sang-Woo Kim, Guest Scientist
David Longenecker, CIRES
Jacob, Mallot, Phys. Sci. Tech.
Donald Nelson, Meteorologist
Allison Payton, CIRES
Patrick Sheridan, Phys. Scientist
Robert Stone, CIRES
Jim Rodgers, Phys. Sci. Tech.
James Treadwell, CIRES
James Wendell, Electronic Tech.

Ozone and Water Vapor

Samuel Oltmans, Physicist
Debbie Creasey, Secretary
Gloria Carbaugh, Phys. Scientist
Dan Chao, Phys. Sci. Tech.
Mark Clark, CIRES
Robert Evans, Physicist
Emyrs Hall, CIRES
Joyce Harris, Res. Phys. Scientist
Bryan Johnson, Res. Chemist
Alan Jordan, Phys. Sci. Tech.
Kevin MacKay, Phys. Sci. Tech.
Dorothy Quincy, CIRES
Eric Rice, Phys. Sci. Tech.
David Sherman, CIRES
Holger Vömel, CIRES
Brooke Walsh, Meteorologist

Observatory Operations

Russell C. Schnell, Phys. Sci. Admin.
Debra Hansen, Secretary
Andrew Clarke, Chemist
Thomas Mefford, CIRES
Mike O'Neill, CIRES
James Salzman, Phys. Sci. Tech.

Daniel Endres, Physicist,
Station Chief, **Barrow**
Daren Blythe, Electronic Tech.

John Barnes, Physicist,
Director, **Mauna Loa**
Leslie Pajo,
Office Automation Clerk
Paul Fukumura-Sawada,
Electronic Eng.
Trevor Kaplan, Contractor
Darryl Kuniyuki, Electronic Eng.
David Nardini, Contractor
Steven Ryan, Phys. Scientist
Robert Uchida, Electronic Tech.
Alan Yoshinaga, Chemist

Daniel Simon, NOAA Corps,
Station Chief, **Samoa**
Mark C. Cunningham, Electronic Eng.

Jason Siefert, NOAA Corps,
Station Chief, **South Pole**
Glen Kinoshita, Physicist
Loreen Lock, Chemist
Brian Vasel, CIRES

Carbon Cycle Greenhouse Gases

Pieter Tans, Senior Scientist
Connie Craig, Secretary
Arlyn Andrews, Physicist
Peter Bakwin, Physicist
Kelley Bransby, Phys. Sci. Tech.
Lori Bruhwiler, Phys. Scientist
Thomas Conway, Res. Chemist
Andy Crowell, CIRES
Ed Dlugokencky, Res. Chemist
Douglas Guenther, CIRES
Michael Hahn, CIRES
Adam Hirsch, CIRES
Duane Kitzis, CIRES
Patricia Lang, Phys. Scientist
Kenneth Masarie, Res. Physicist
Anna Michalak, UCAR Post Doc.
John Miller, CIRES
Don Neff, CIRES
Paul Novelli, Res. Chemist
Karen Partak, CIRES
Sarah Petersen, Phys. Sci. Tech.
Wouter Peters, CIRES
Stephen Santoro, Phys. Sci. Tech.
Ryan Seader, Phys. Sci. Tech.
Kirk Thoning, Physicist
Michael Trudeau, CIRES
Aaron Watson, CIRES
Conglong Zhao, CIRES

Halocarbons and other Atmospheric Trace Species

James Elkins, Supv. Physicist
Debra Hansen, Secretary
James Butler, Res. Chemist
Bruce Daube, CIRES
Geoffrey Dutton, CIRES
Brad Hall, Phys. Scientist
Steve Montzka, Res. Chemist
Dale Hurst, CIRES
Bernard Lafleur, CIRES
Debbie Mondeel, CIRES
Fred Moore, CIRES
David Nance, CIRES
Jessica Neu, NRC
Pavel Romashkin, CIRES
Aimee Scheffer, CIRES
Wendy Snible, CIRES
Thayne Thompson, Physicist

CMDL Station Information

<p>Name: Barrow (BRW) Latitude: 71.323°N Longitude: 156.609°W Elevation: 11 m Time Zone: GMT – 9 Office Hours: 8:00 am-5:00 pm Phone during Ofc. hours: (907) 852-6500 Fax: (907) 852-4622</p> <p>Postal Address: Officer in Charge NOAA CMDL Box 888 Barrow, AK 99723</p> <p>Freight Address: Officer in Charge NOAA CMDL 617 Cunningham Barrow, AK 99723</p>	<p>Mauna Loa (MLO) 19.539°N 155.578°W 3397 m GMT – 10 8:00 am-5:00 pm (808) 933-6965 (808) 933-6967</p> <p>U.S. Dept. of Commerce NOAA - Mauna Loa Observatory, Rm. 202 P.O. Box 275 Hilo, HI 96721</p> <p>U.S. Dept. of Commerce NOAA - Mauna Loa Observatory 154 Waianuenue Ave. Hilo, HI 96720-2452</p>
<p>Name: Samoa (SMO) Latitude: 14.232°S Longitude: 170.563°W Elevation: 77 m Time Zone: GMT – 11 Office Hours: 8:00 am-5:00 pm Phone during Ofc. hours: 011 (684) 622-7455 Phone after hours: 011 (684) 258-2847 Fax: 011 (684) 622-7455</p> <p>Postal Address: Officer in Charge U.S. Dept. of Commerce NOAA - CMDL Samoa Observatory P.O. Box 2568 Pago Pago, American Samoa 96799</p> <p>Freight Address: Same as above</p>	<p>South Pole (SPO) 89.997°S 102.0°E 2837 m GMT + 12 8:00 am-5:00 pm Relayed through CMDL Boulder</p> <p>Officer in Charge NOAA/CMDL Clean Air Facility S-257 South Pole, Antarctica PSC 468 Box 400 FPO AP 96598-5400</p> <p>Same as above for items going all the way to the South Pole by aircraft.</p>
<p>Name: Trinidad Head (THD) Latitude: 41.05°N Longitude: 124.151°W Elevation: 107 m Time Zone: GMT – 8 Office Hours: 9:00 am-5:00 pm Phone during Ofc. hours: (707) 826-3671 Fax: (707) 826-3682</p> <p>Postal Address: NOAA CMDL Telonicher Marine Laboratory Humboldt State University Arcata, CA 95524</p> <p>Freight Address: NOAA CMDL 590 Ewing Trinidad Head, CA 95570</p>	<p>Large or heavy shipments sent by ship to McMurdo and then by aircraft to the South Pole use:</p> <p>NSF Contractor Representative BLDG 471 - North End USN - CBC Port Hueneme, CA 93043 ATTN: USAP - NPX Station Project code: DR3 Grantee Name: Hofmann Event Number: 00-257-0 ROS: Vessel (date to be at site)</p>