

A map of the Northern Plains region of the United States, including parts of Montana, Wyoming, North Dakota, South Dakota, Nebraska, and Minnesota. A thick black outline highlights a specific area in the central and eastern parts of the region, which is the focus of the Council on Utility Policy (COUP). The map also shows major water bodies like Lake Superior and Lake Michigan, and various geographical features like rivers and lakes. The text 'CIVIL WORKS BOUNDARY' is visible on the map.

**INTERTRIBAL**

**COUP**

**Council On Utility Policy**

*Tribes Building Sustainable Homeland Economies*

*P.O. Box 224, Ft. Pierre, SD 57532*

**Pat Spears, President - Lower Brule Reservation, SD**

**Terry Fredericks, Vice President - Ft. Berthold Reservation, ND**

**Bob Gough, Secretary - Rosebud Reservation, SD**

**Bill Schumacher, Treasurer - Flandreau Santee Reservation, SD**

**Michael and Eddie Spears, COUP Youth Interns**

*[www.NativeWind.org](http://www.NativeWind.org)*



# **INTERTRIBAL COUP**

## **Council On Utility Policy**

**Council For Environmental Cooperation**

**September 24-25, 2007**

***“Indigenous Communities Renewable  
Energy Forum”***

**[www.Intertribalcoup.org](http://www.Intertribalcoup.org)**

**[www.NativeWind.org](http://www.NativeWind.org)**

**[www.NativeEnergy.com](http://www.NativeEnergy.com)**

## *Tribal Renewable Energy*



- Indian Reservations are the poorest communities in the U.S. and have the highest unemployment rates.
- Indian Tribes are the fastest growing populations in the U.S with half their members under 18 years of age, and all growth is natural, not immigration.
- Reservation homes are 10 times more likely (14.2%) to be without electricity than rest of U.S. (1.4%)
- Tribes have hundreds of gigawatts of renewable energy potential. Tribes could meet most of U.S. electric energy needs with clean green power.

• Federal Trust Responsibility to build Tribal Sustainable Homeland Economies/Federal Markets

<http://www.eia.doe.gov/cneaf/solar.renewables/page/pubs.html>

Rosebud Sioux Turbine



### Native American Online

The Native American Online project is an online resource for Native American history and culture. It provides information on Native American tribes, languages, and traditions. The project is a collaborative effort of Native American scholars and educators.

### Reservations

Reservations are areas of land set aside for Native American tribes. They are often located in remote areas and are often the result of government policy. Reservations are an important part of Native American history and culture.

### Tribes

There are over 500 Native American tribes in the United States. Each tribe has its own unique culture, language, and traditions. Some tribes are still active, while others have become extinct.

### Navajo Nation

The Navajo Nation is one of the largest Native American tribes in the United States. They live in the southwestern United States and are known for their intricate weaving and art.

### Alaska

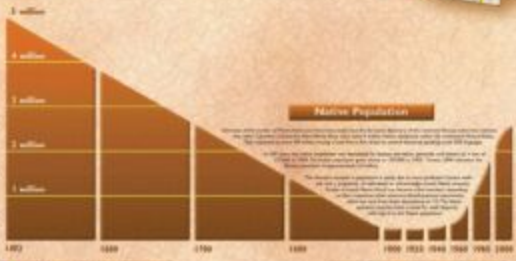
Alaska is home to many Native American tribes, including the Inuit and Aleut. These tribes have a long history of living in the state and have a rich cultural heritage.

### Oklahoma Native Lands

Oklahoma is a state with a large Native American population. It is home to many tribes, including the Cherokee, Chickasaw, and Choctaw. The state has a rich history of Native American culture and traditions.

### Timeline

A timeline of Native American history from 1492 to the present. It includes key events such as the arrival of Columbus, the signing of the Indian Removal Act, and the establishment of the first reservation.



**1492 Arrival of Columbus**



**1800 Natives Forced Inland**



**1830 "Indian Country"**



**1860 Immigrant Stampede**



**1900 Vanquished Natives**



**2100 Native Lands?**



### Chronology

- 1492 Arrival of Columbus in the New World
- 1497 Christopher Columbus
- 1500 Spanish in Florida
- 1513 Spanish in Florida
- 1542 Spanish in California
- 1565 Spanish in Florida
- 1570 Spanish in California
- 1571 Spanish in California
- 1572 Spanish in California
- 1573 Spanish in California
- 1574 Spanish in California
- 1575 Spanish in California
- 1576 Spanish in California
- 1577 Spanish in California
- 1578 Spanish in California
- 1579 Spanish in California
- 1580 Spanish in California
- 1581 Spanish in California
- 1582 Spanish in California
- 1583 Spanish in California
- 1584 Spanish in California
- 1585 Spanish in California
- 1586 Spanish in California
- 1587 Spanish in California
- 1588 Spanish in California
- 1589 Spanish in California
- 1590 Spanish in California
- 1591 Spanish in California
- 1592 Spanish in California
- 1593 Spanish in California
- 1594 Spanish in California
- 1595 Spanish in California
- 1596 Spanish in California
- 1597 Spanish in California
- 1598 Spanish in California
- 1599 Spanish in California
- 1600 Spanish in California
- 1601 Spanish in California
- 1602 Spanish in California
- 1603 Spanish in California
- 1604 Spanish in California
- 1605 Spanish in California
- 1606 Spanish in California
- 1607 Spanish in California
- 1608 Spanish in California
- 1609 Spanish in California
- 1610 Spanish in California
- 1611 Spanish in California
- 1612 Spanish in California
- 1613 Spanish in California
- 1614 Spanish in California
- 1615 Spanish in California
- 1616 Spanish in California
- 1617 Spanish in California
- 1618 Spanish in California
- 1619 Spanish in California
- 1620 Spanish in California
- 1621 Spanish in California
- 1622 Spanish in California
- 1623 Spanish in California
- 1624 Spanish in California
- 1625 Spanish in California
- 1626 Spanish in California
- 1627 Spanish in California
- 1628 Spanish in California
- 1629 Spanish in California
- 1630 Spanish in California
- 1631 Spanish in California
- 1632 Spanish in California
- 1633 Spanish in California
- 1634 Spanish in California
- 1635 Spanish in California
- 1636 Spanish in California
- 1637 Spanish in California
- 1638 Spanish in California
- 1639 Spanish in California
- 1640 Spanish in California
- 1641 Spanish in California
- 1642 Spanish in California
- 1643 Spanish in California
- 1644 Spanish in California
- 1645 Spanish in California
- 1646 Spanish in California
- 1647 Spanish in California
- 1648 Spanish in California
- 1649 Spanish in California
- 1650 Spanish in California
- 1651 Spanish in California
- 1652 Spanish in California
- 1653 Spanish in California
- 1654 Spanish in California
- 1655 Spanish in California
- 1656 Spanish in California
- 1657 Spanish in California
- 1658 Spanish in California
- 1659 Spanish in California
- 1660 Spanish in California
- 1661 Spanish in California
- 1662 Spanish in California
- 1663 Spanish in California
- 1664 Spanish in California
- 1665 Spanish in California
- 1666 Spanish in California
- 1667 Spanish in California
- 1668 Spanish in California
- 1669 Spanish in California
- 1670 Spanish in California
- 1671 Spanish in California
- 1672 Spanish in California
- 1673 Spanish in California
- 1674 Spanish in California
- 1675 Spanish in California
- 1676 Spanish in California
- 1677 Spanish in California
- 1678 Spanish in California
- 1679 Spanish in California
- 1680 Spanish in California
- 1681 Spanish in California
- 1682 Spanish in California
- 1683 Spanish in California
- 1684 Spanish in California
- 1685 Spanish in California
- 1686 Spanish in California
- 1687 Spanish in California
- 1688 Spanish in California
- 1689 Spanish in California
- 1690 Spanish in California
- 1691 Spanish in California
- 1692 Spanish in California
- 1693 Spanish in California
- 1694 Spanish in California
- 1695 Spanish in California
- 1696 Spanish in California
- 1697 Spanish in California
- 1698 Spanish in California
- 1699 Spanish in California
- 1700 Spanish in California

### Trail of Tears

The Trail of Tears was a forced relocation of Native American tribes from their ancestral lands to a new area of land in the west. It is a dark chapter in American history.

Region	Number of Reservations
Northwest	10
Rocky Mountain	15
Great Plains	20
Midwest	12
Southern Plains	8
Western	18
Southwest	14
Pacific	6
Eastern	4

Native American Online  
www.nativeamericanonline.com

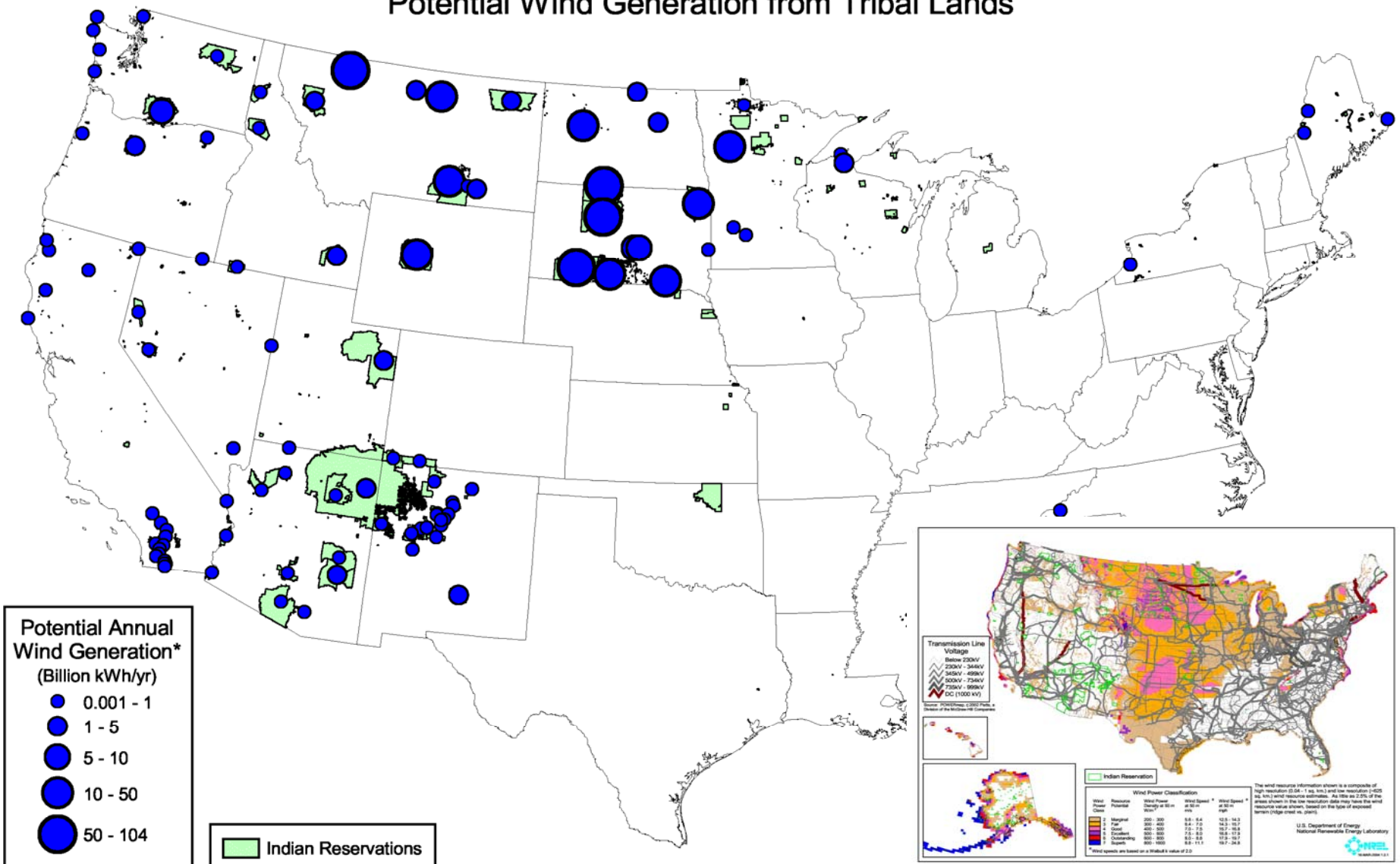
## Native American RESERVATIONS

### Map Legend

- Native American Reservations
- State Capitals
- Major Cities
- State Boundaries



# Potential Wind Generation from Tribal Lands



\* Generation estimated for areas of class  $\geq 4$  annual average wind resource, assuming 5 MW/km<sup>2</sup> of installed capacity, and capacity factors ranging from 25.1% (class 4) to 41.4% (class 7).

Aggregate technical estimate of 209 GW does not account for sacred sites, transmission access, water bodies, or other factors that will significantly impact development potential.

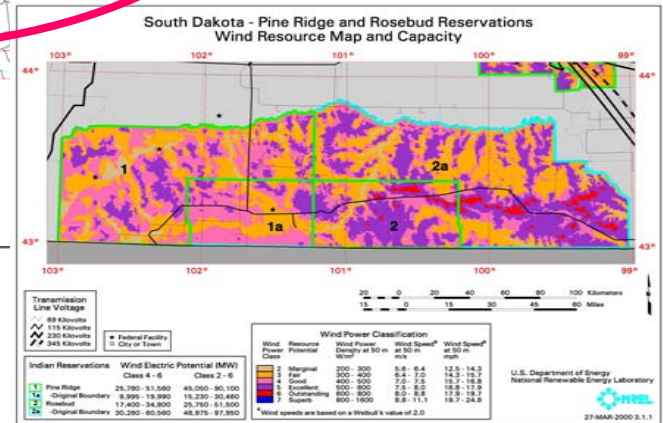
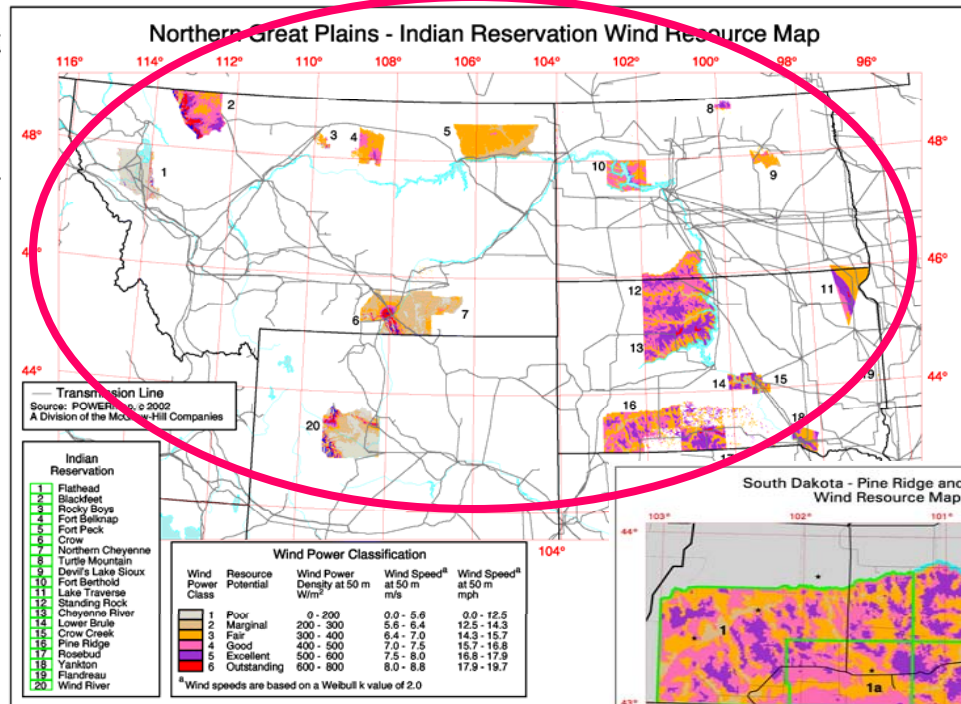
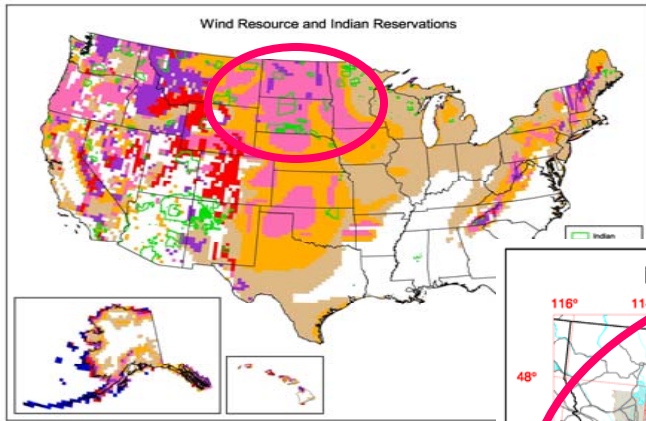
**Total Tribal Wind Generation Potential: 535 Billion kWh/yr**

**U.S. Total Electric Generation (2004 Est.): 3,853 Billion kWh/yr (EIA)**

U.S. Department of Energy  
National Renewable Energy Laboratory



# The TREMENDOUS WIND POWER RESOURCES Found on the NORTHERN GREAT PLAINS INDIAN RESERVATIONS:



Twenty Northern Plains Indian Reservations hold several hundred gigawatts of wind power potential.

Wind power potential on these Indian Reservations alone is more than enough to meet North American Kyoto targets.

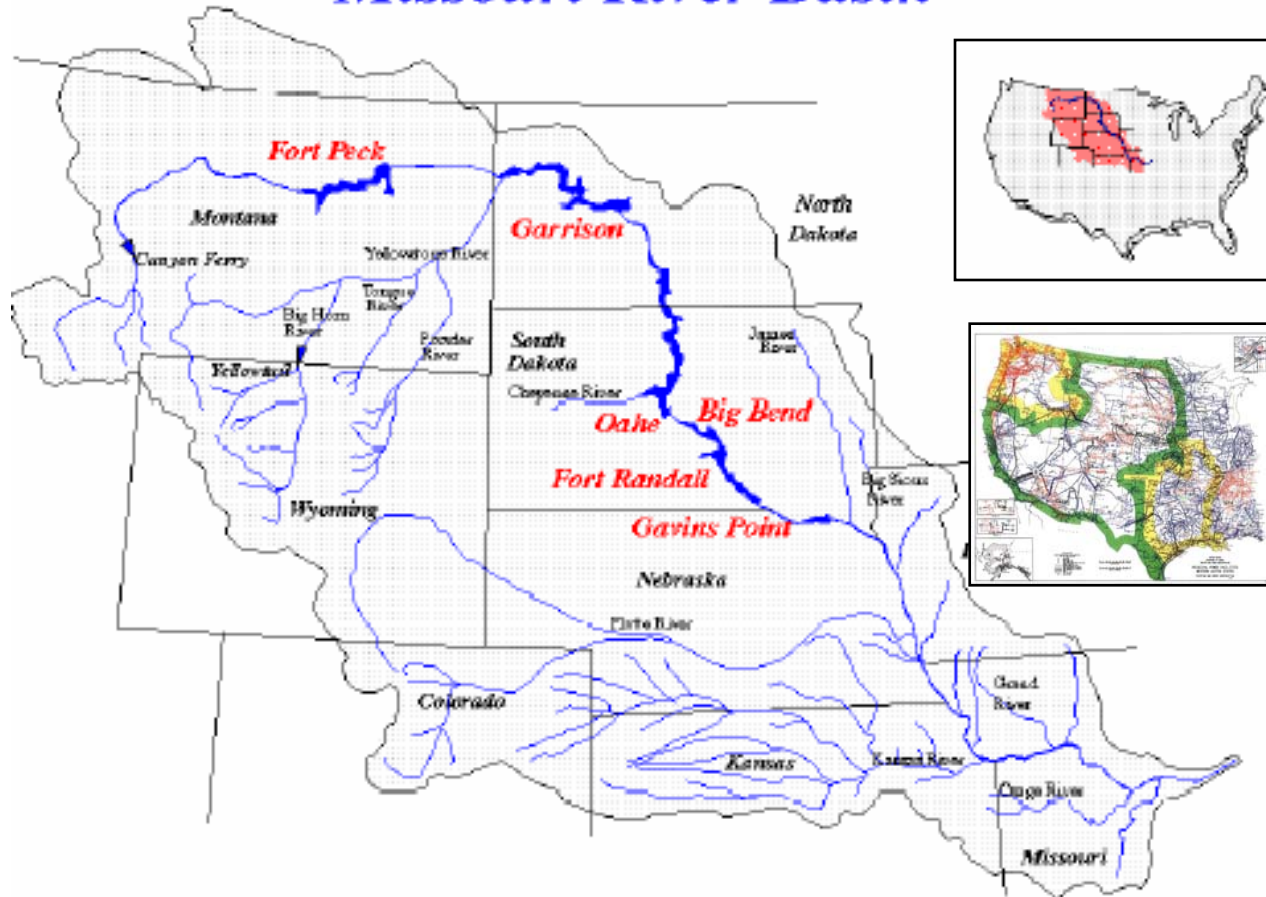
[www.NativeWind.org](http://www.NativeWind.org)

Intertribal COUP





# Missouri River Basin



❖ Six dams, 2500 MW capacity (nameplate)

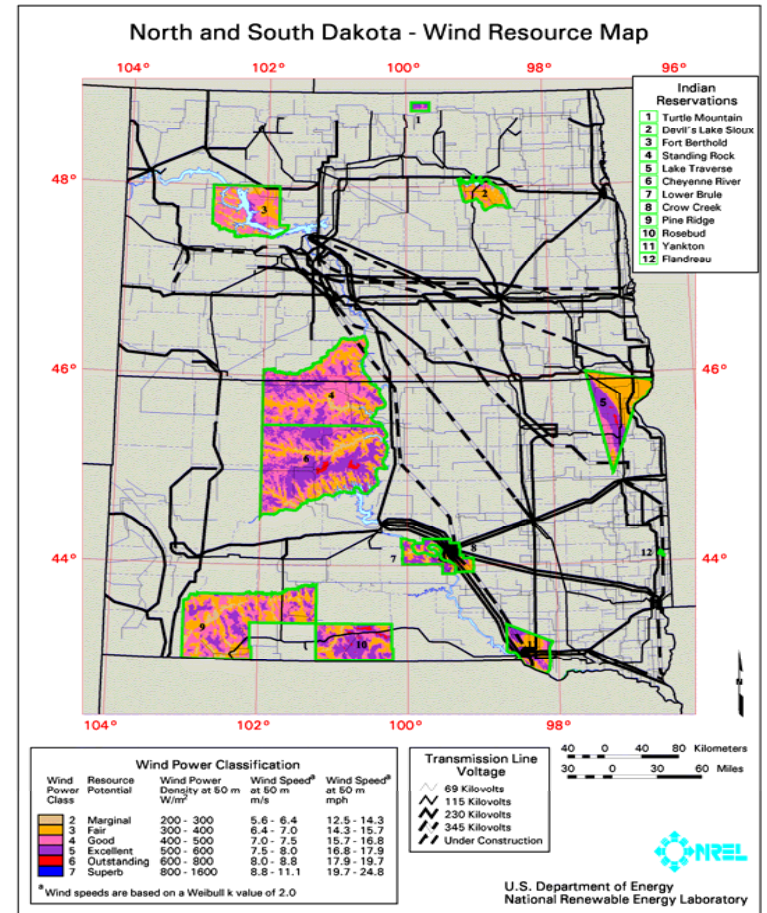
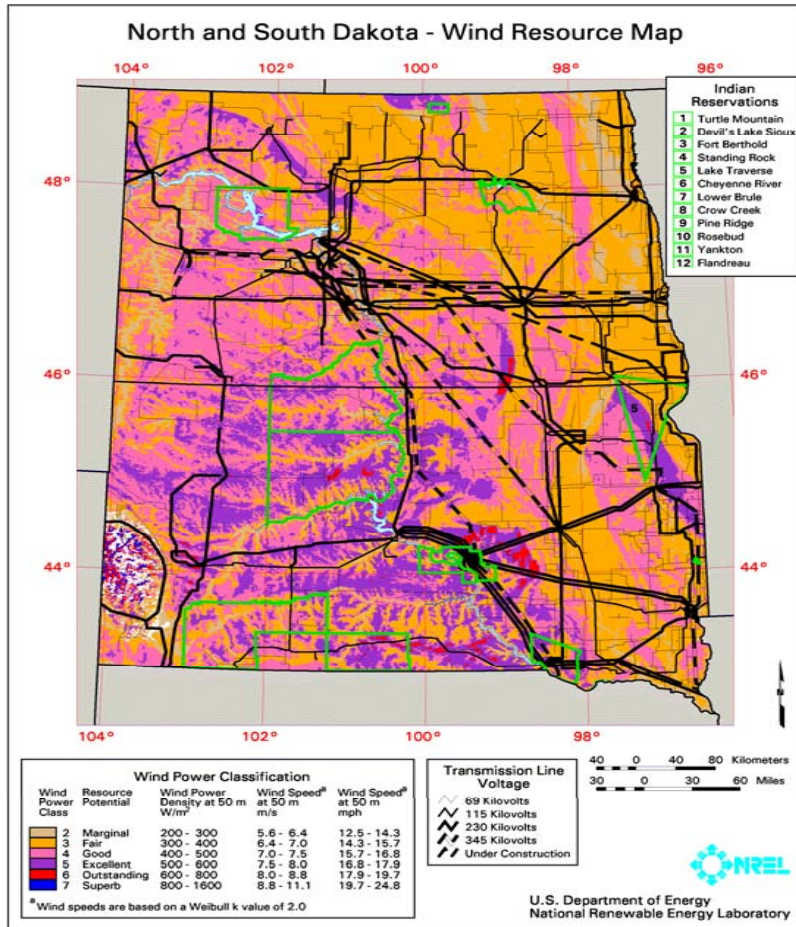
❖ Combined storage 75 million acre-feet (93 billion m<sup>3</sup>), about 3 times average annual runoff

❖ Operated by Corp of Engineers

❖ Marketed by Western Area Power Administration



# Treaty Rights, Tribal Sovereignty, Tremendous Wind Resource



Tribal Regulation, Tribal Development, Treaty Partnerships

# **Rosebud Sioux & Intertribal COUP**

## **Environmental Justice Revitalization Plan:**

**3,000 MWs of Tribally Owned Wind Power Across the Northern Great Plains  
Financed with Sale of Energy & Environmental Attributes ("Green Tags")**

### **Phase 1 (2003):**

**1st Tribally owned 750 kW Turbine on Rosebud Reservation  
Commissioned March 4th, Dedicated May 1st, 2003**

**2<sup>nd</sup> Tribally owned 65 kW Turbine on Ft. Berthold Reservation  
Commissioned Oct 4, 2005**

### **Phase 2 (2004/5):**

**30 MW Wind Ranch on Rosebud Reservation**

**Phase 3 EJ Demonstration (2004/6):  
80MWs: Eight 10 MW Wind Ranches on 8 Reservations**

### **Phase 4 (2004-2008):**

**Expand and Replicate across the Northern Great Plains**

### **Phase 5 (2006/15):**

**3,000 Tribal MW on Great Plains Reservations**

***Tribal Wind Power for Sustainable Homeland Economic Development***





Rosebud's 750 kW Turbine produces 2.4 Mil kWh/yr.

[IntertribalCOUP.org](http://IntertribalCOUP.org)



Ft. Berthold's 65 kW Turbine installed Sept 30, 2005

[IntertribalCOUP.org](http://IntertribalCOUP.org)

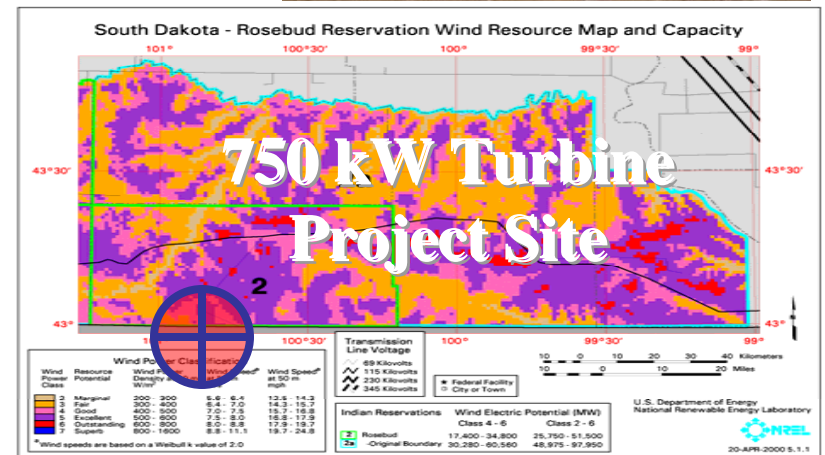
# 750 kW Wind Turbine ~ Rosebud ~ 2003

The first 750 kW utility scale NEG MICON wind turbine owned and operated by the Rosebud Sioux Tribe through partnerships:

- Department of Energy (DOE)
- Rural Utilities Service (RUS/USDA)
- DisGen, Inc. (Engineering)
- Basin/CherryTodd/ NPPD/ WAPA/ Ellsworth AFB
- NativeEnergy/Clean Air-Cool Planet (Green Tags)



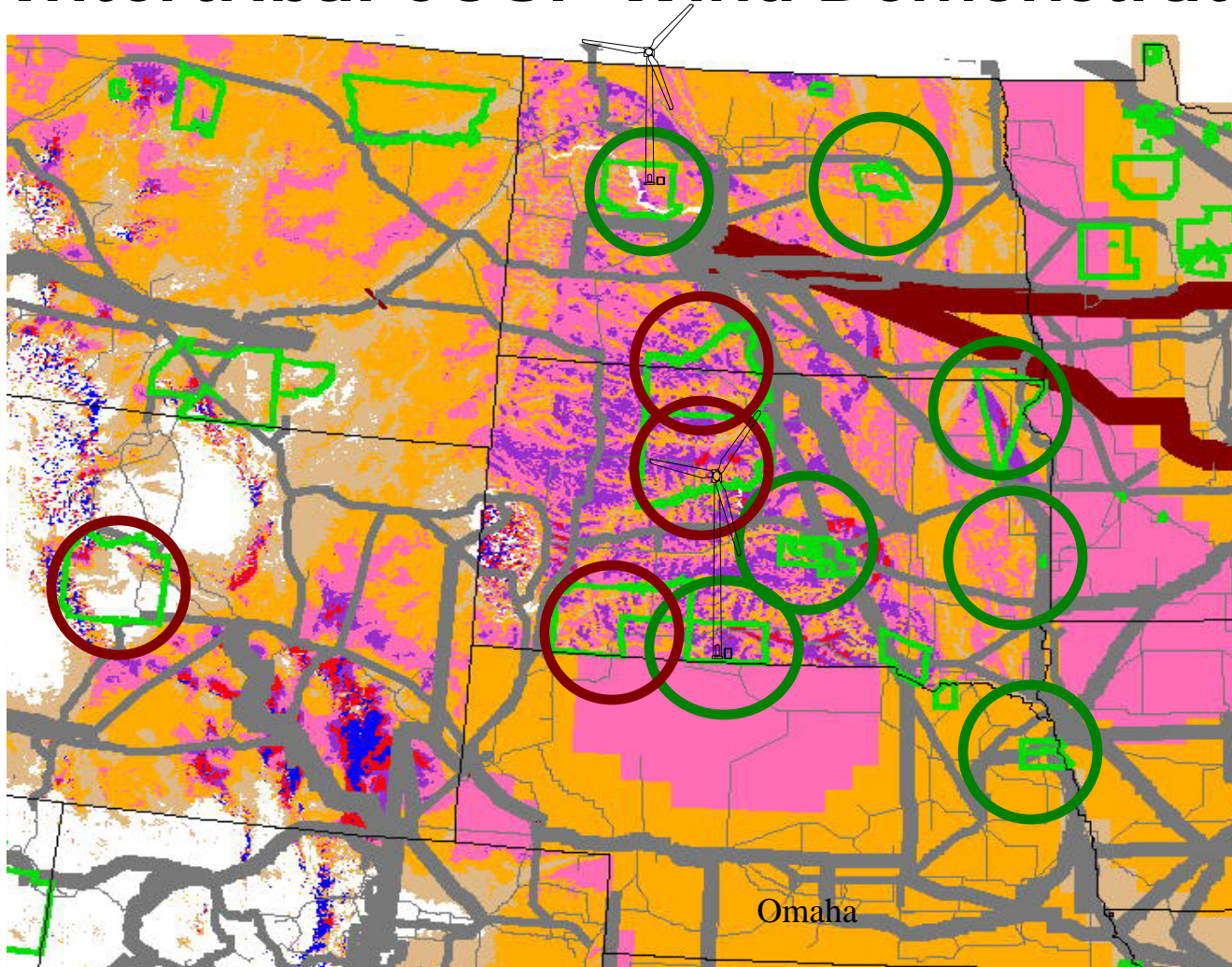
**RST TRIBAL COUNCIL/COUP  
and NativeEnergy, Inc.**



The Intertribal Council On Utility Policy





# Intertribal COUP Wind Demonstration Project



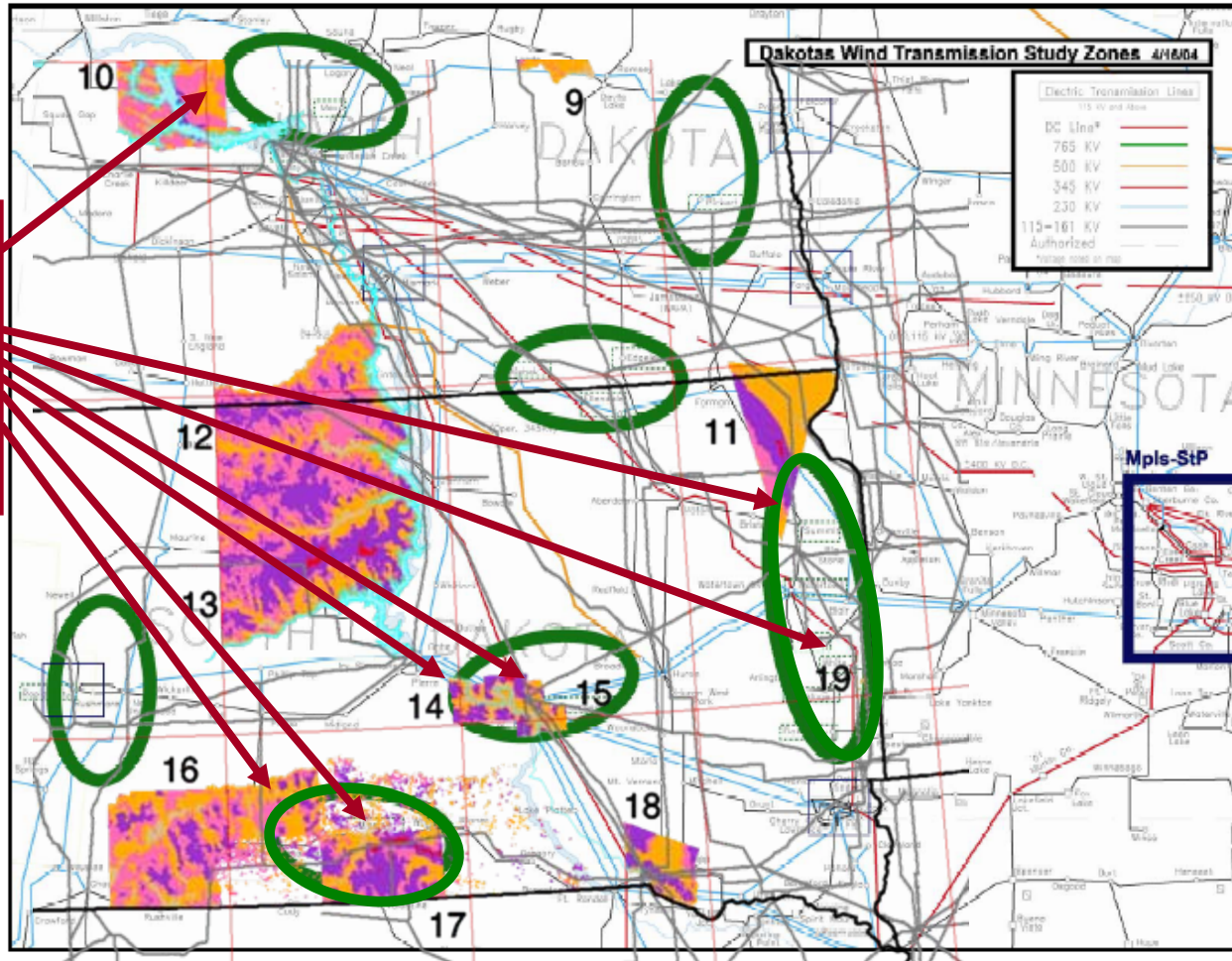
COUP Tribes have, by Resolution, signed on to participate in the Intertribal 80 MW wind development demonstration project, with several more pending.

This tribally-owned, multi-MW intertribal project is to be built in 10 MW clusters on each of the participating COUP Reservations.

-  Planned
-  Pending

# WAPA / WIND INTEGRATION STUDY AREA

## Includes Several Reservation Interconnection Sites



COUP  
Proposed  
WAPA  
Wind Study  
Site Areas

<http://www.wapa.gov/ugp/study/DakotasWind/Zone%20Map.pdf>

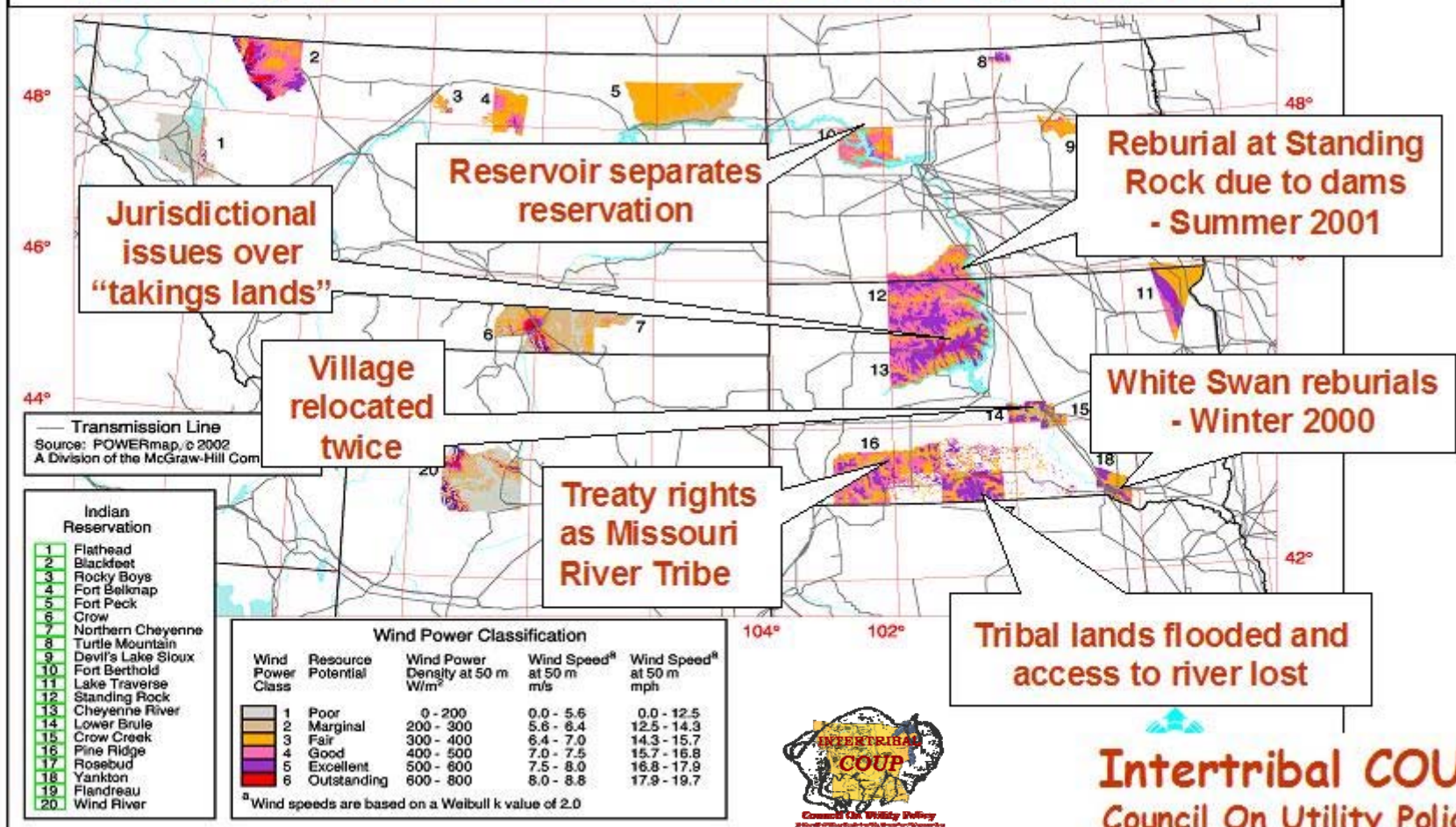


# Intertribal Wind Planning and Policy Project

## Intertribal Council On Utility Policy (COUP)

Wind Resources on Northern Plains Reservations located in the Eastern Pick-Sloan Region (Upper Missouri River Basin) of the Western Area Power Administration (WAPA) Grid

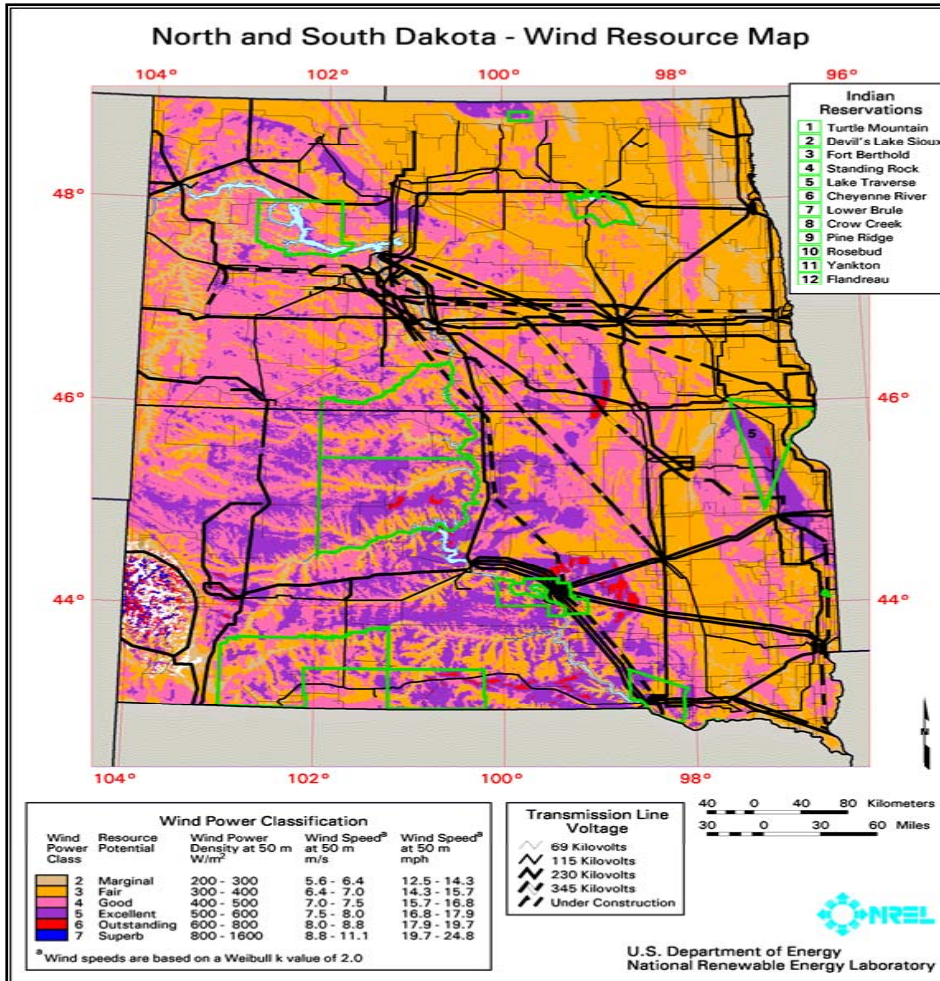
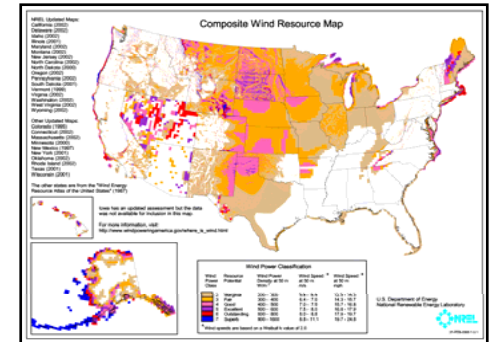
### Past and ongoing Tribal Environmental Justice Issues Resulting from the Construction of Hydropower Dams



**Intertribal COUP**  
Council On Utility Policy



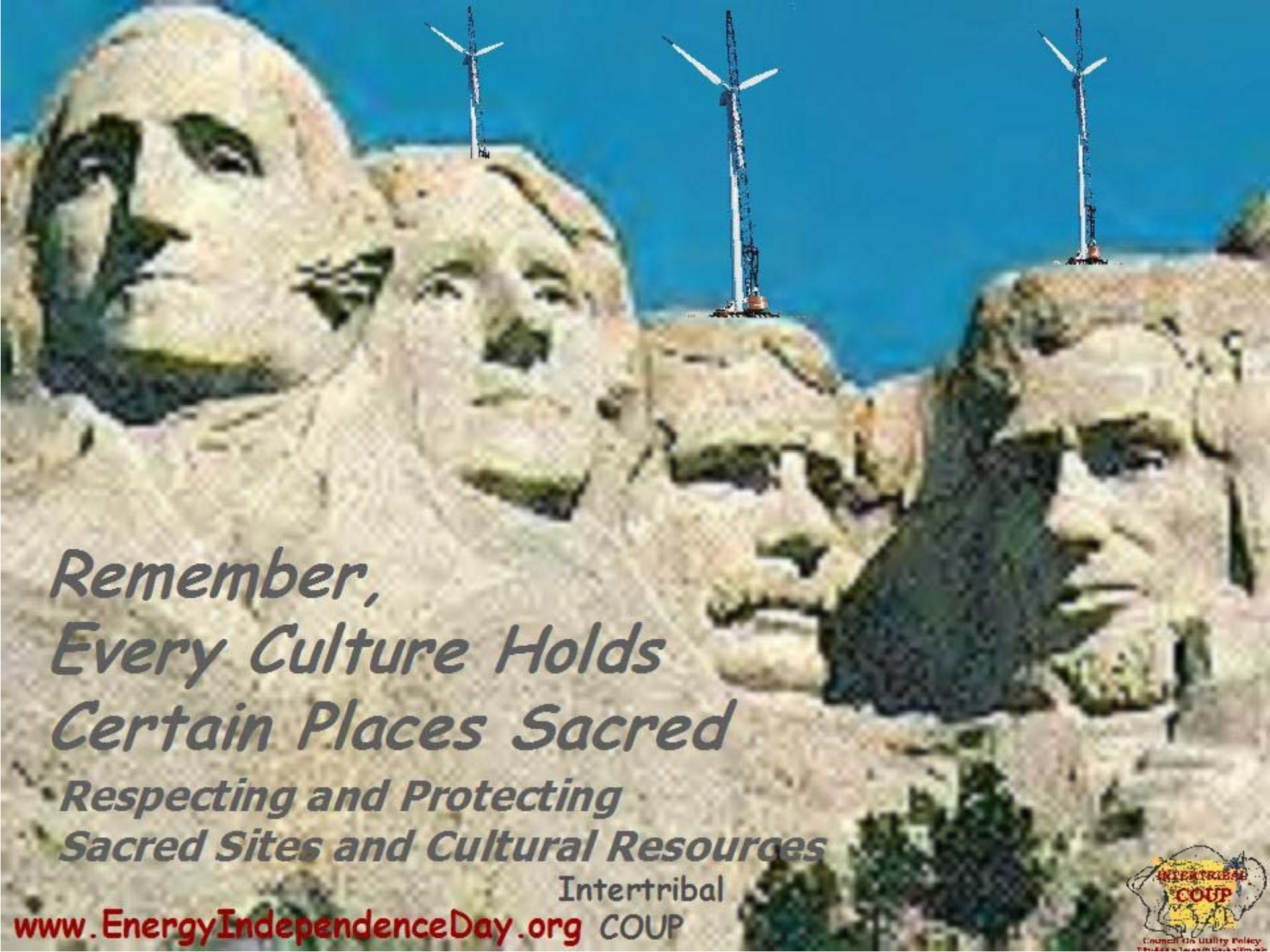
# PROTECTING CULTURAL RIGHTS



## Sacred Sites and Cultural Resource Protection

In the Dakotas, some of the best winds are found in the Black Hills. But the Black Hills are sacred to the Lakota.

Tribes are not likely to promote wind projects there. However, we have found some previously disturbed federal land there ...



*Remember,  
Every Culture Holds  
Certain Places Sacred  
Respecting and Protecting  
Sacred Sites and Cultural Resources*

Intertribal

COUP

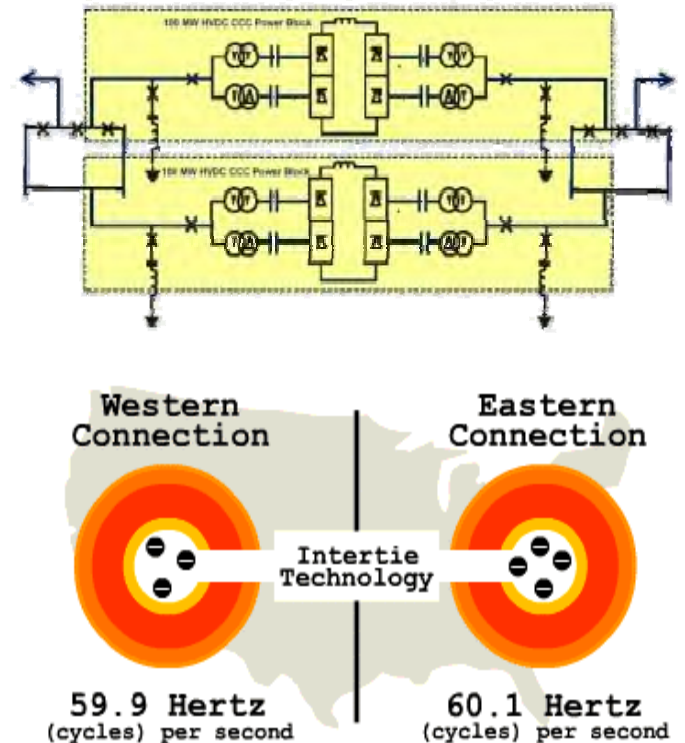
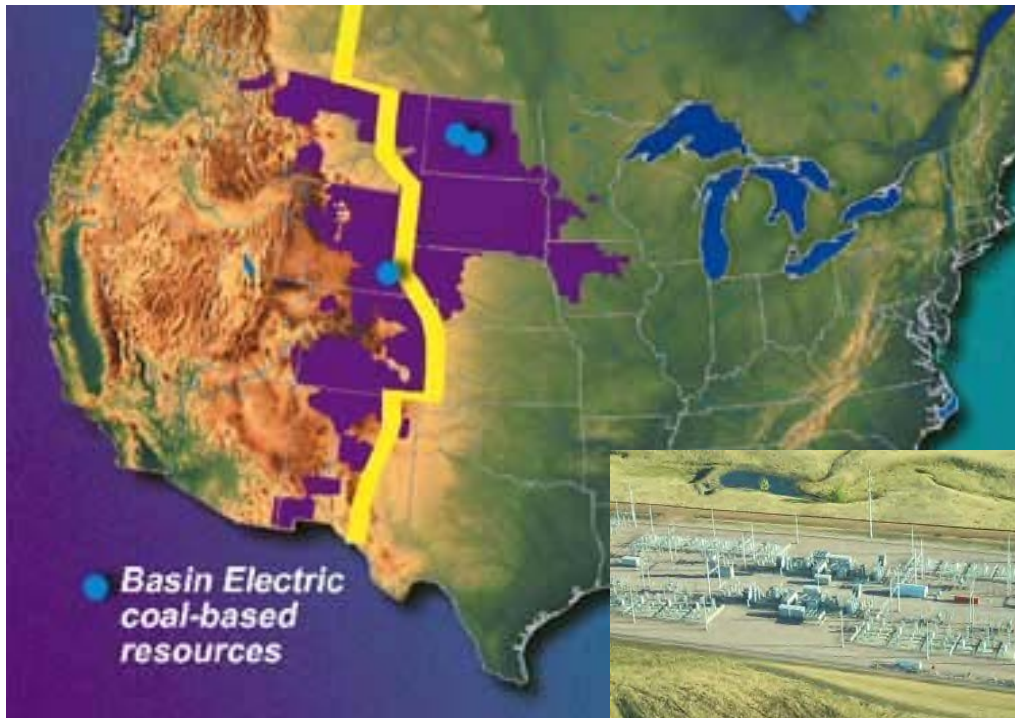
[www.EnergyIndependenceDay.org](http://www.EnergyIndependenceDay.org)





# Rapid City DC Tie

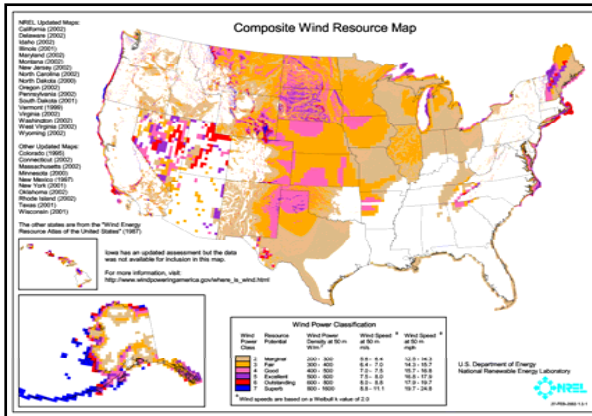
The 200 MW Rapid City DC Tie, South Dakota, owned by Basin Electric Power Cooperative interconnects the power system of eastern USA with the western system. The North American continental divide in electricity runs through western South Dakota.



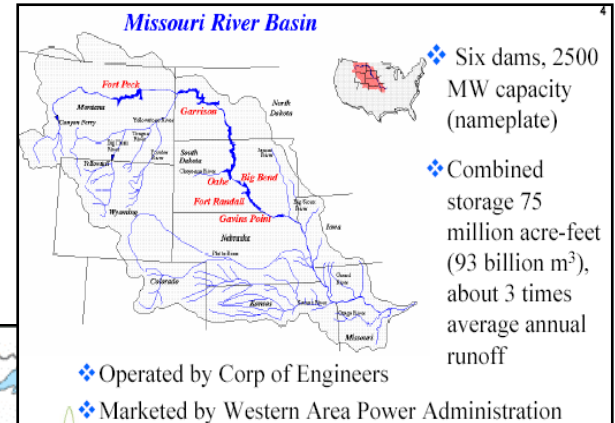


# Tribal Wind / Federal Hydropower Renewable Energy Dynamo

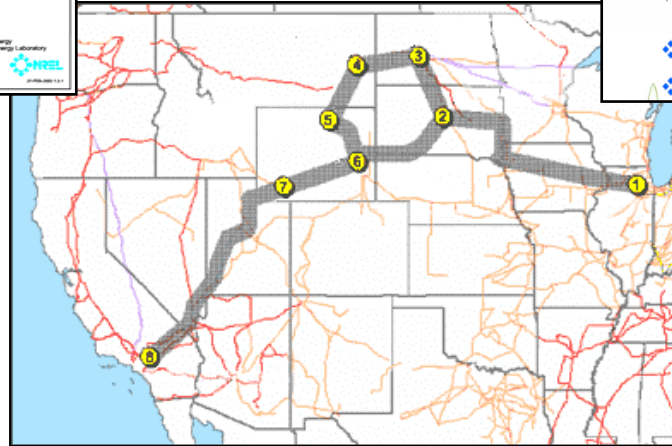
## World's Largest Hydropower Storage System Could Operate as a Wind Storage Battery



## TransAmerica Generation Grid for Wind/Hydro Dynamo



<http://www.windpoweringamerica.gov>



[http://www.solpath.com/luna/admin/documents/NEITS\\_AWEA\\_presentation\\_032904.pdf](http://www.solpath.com/luna/admin/documents/NEITS_AWEA_presentation_032904.pdf)

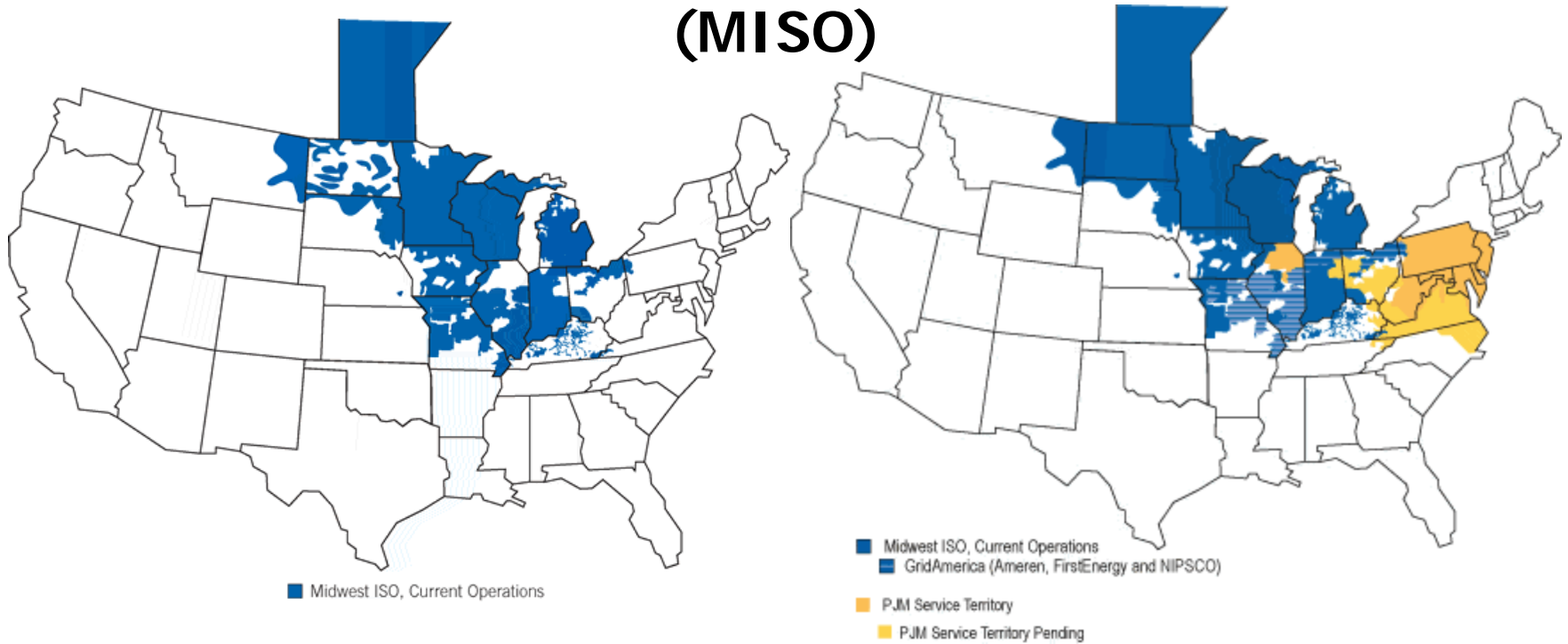
## New and Upgraded Transmission Needed To Deliver Clean Abundant Wind Power to Load Centers

[www.NativeWind.org](http://www.NativeWind.org)



**Intertribal COUP**

# Midwest Independent Transmission System Operator (MISO)

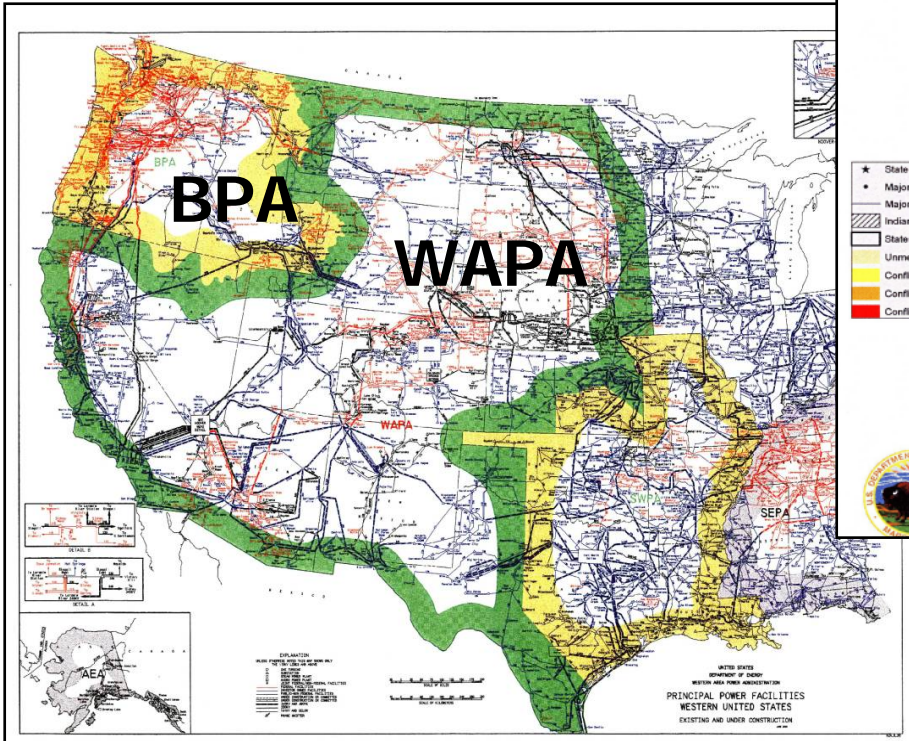
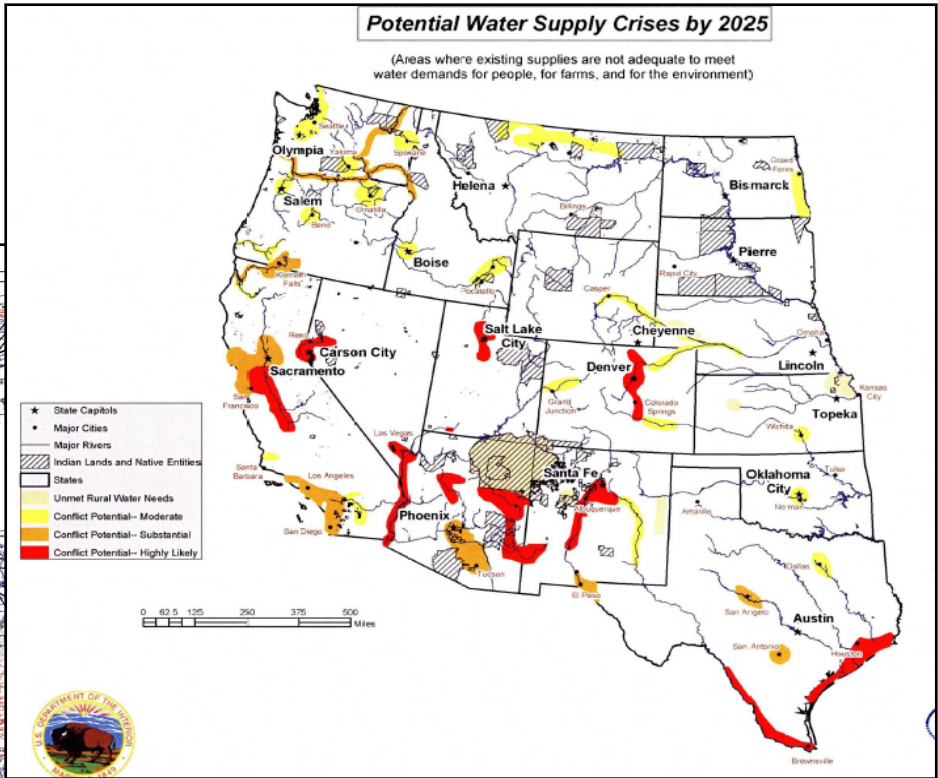


The Midwest Independent Transmission System Operator, Inc. and PJM Interconnection are working together to develop complementing system operations and one robust, non-discriminatory wholesale electricity market to meet the needs of all customers and stakeholders in 23 states, the District of Columbia and the Canadian province of Manitoba. The market is being developed through an open stakeholder process and is being designed to serve residents regardless of whether they reside in states with bundled or unbundled retail rates.

# National Renewable Energy Grids

BPA and WAPA Renewable Hydropower Grids (in red)  
Are The Backbone of the U.S. Western Transmission Grid

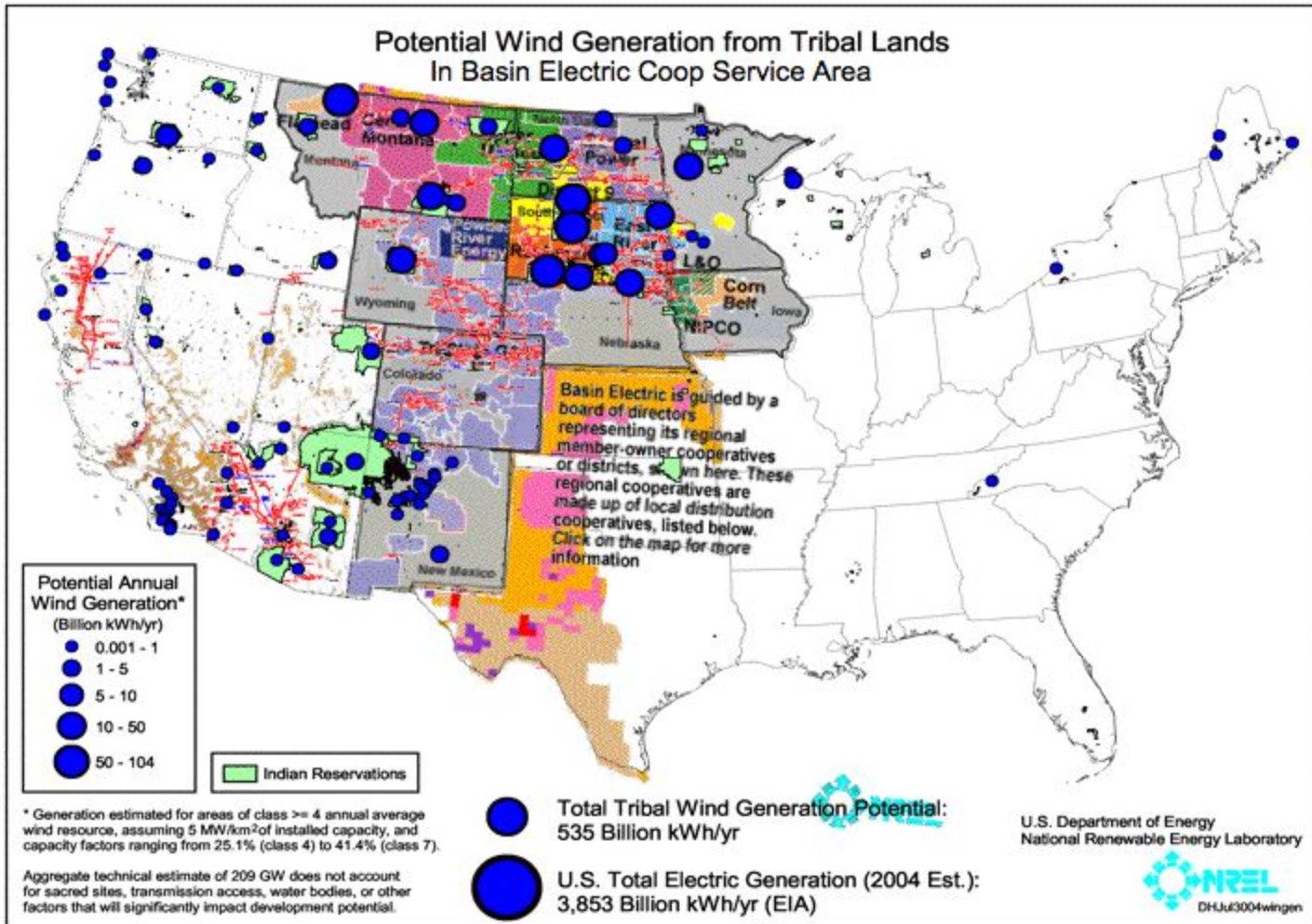
But WAPA hydropower is  
diminishing under drought



... and with regional growth  
and conventional generation.



## Potential Wind Generation from Tribal Lands In Basin Electric Coop Service Area



\* Generation estimated for areas of class  $\geq 4$  annual average wind resource, assuming 5 MW/km<sup>2</sup> of installed capacity, and capacity factors ranging from 25.1% (class 4) to 41.4% (class 7).

Aggregate technical estimate of 209 GW does not account for sacred sites, transmission access, water bodies, or other factors that will significantly impact development potential.

# Western Area Power Administration's Goals for 2007:

## “three key areas covered In the Energy Policy Act”

### Face to face with Western's new Administrator

*(Editor's note: As we look toward Western's future, the Closed Circuit sat down with Western's new Administrator, Tim Meeks, Jan. 9, to gain his perspectives on Western's future, as well as his goals and expectations for 2007.)*

CC: What goals do you have for Western and its employees this year?

**Tim:** As I shared with our customers at the Midwest Electric Consumers Association meeting, there are three key areas covered in the Energy Policy Act that we will be focusing on externally.

First is our duty as a transmission owner and provider. I think of **transmission as being the ultimate key to our future.** When you look at power marketing, we're here to deliver Federal hydropower. When you look at our long-term future, transmission and operations are services that are growing. Right now, the percentage of Federal hydropower we're providing our customers is decreasing, because our resources aren't growing and the customers' load requirements are. ...

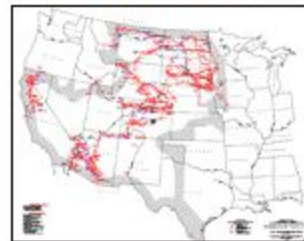
Another area we are focusing on is **integrating wind into the existing transmission system.** Wind energy is here. It's a renewable resource that is getting a lot of attention both from consumers and politicians. Wind energy is the world's fastest-growing energy technology. We need to do what we can physically to make it easier for wind generators to connect to the system.

Thirdly, I anticipate **expanding our partnership with Native American tribes to foster economic development on reservations.** I know that's a very hard thing to quantify for success tracking, but we're going to continue to reach out to the tribes. They are our customers and we need to ask them, "What do you value from us and how can we help you develop and grow economically?"

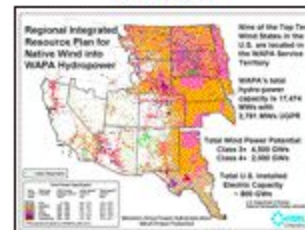


Tim Meeks

### Transmission



### Wind



### Native American Tribes

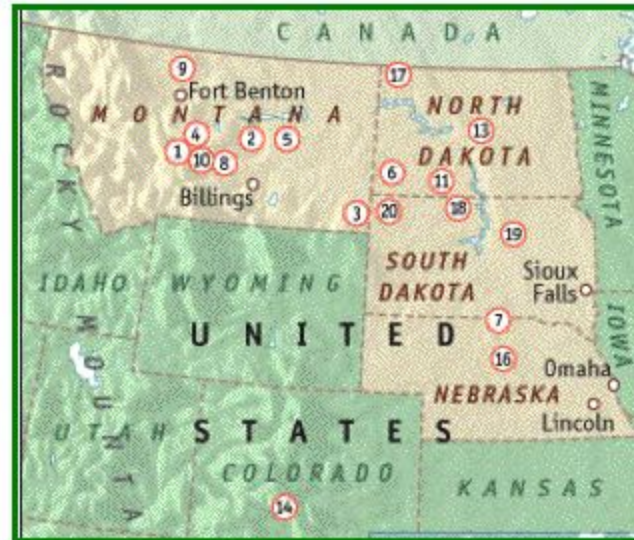




## Want to see America's new ghetto? Follow the Rockies northwards towards the Great Plains

The poorest part of America ~ Not here, surely?

*The Economist* ~ Dec. 8, 2005



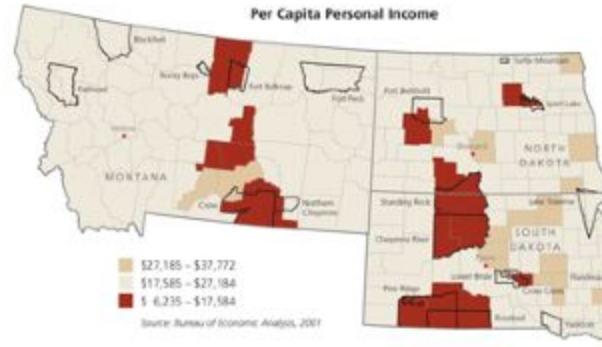
No place so demonstrates the shaky economic state of rural America as the northern Rockies and western Great Plains. Virtually all of the 20 poorest counties in America, in terms of wages, are on the eastern flank of the Rockies or on the western Great Plains.

There are two unusual things about the deprivation in this region. First, it is largely white. The area does include several pockets of wretched Native American poverty, but in most areas the poor are as white as a prairie snowstorm. Second, most people do not think of themselves as poor.

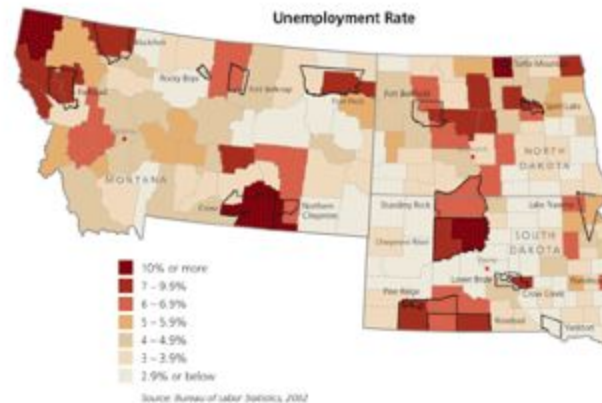


# PERSONAL INCOME, UNEMPLOYMENT AND INDIAN COUNTRY

Per Capita  
PERSONAL  
INCOME  
By County



UNEMPLOYMENT  
RATE  
By County



- Final Report -  
Nancy G. Maynard, Editor

## CIRCLES OF WISDOM



U.S. Global Change Research Program

OCTOBER 28 - NOVEMBER 1, 1998  
Albuquerque Convention Center  
Albuquerque, New Mexico

Sponsors:  
The National Aeronautics and Space Administration  
American Indian Chamber of Commerce of New Mexico  
City of Albuquerque

“Entering the 21st century, a prime Native strategy encourages the development of sustainable homeland economies to ensure survival as Nations and for the restoration of a more balanced climate for Mother Earth. The Strategy includes the protection of naturally diverse ecosystems and the use of renewable energy technologies.”



[www.usgcrp.gov/usgcrp/Library/nationalassessment/native.pdf](http://www.usgcrp.gov/usgcrp/Library/nationalassessment/native.pdf)

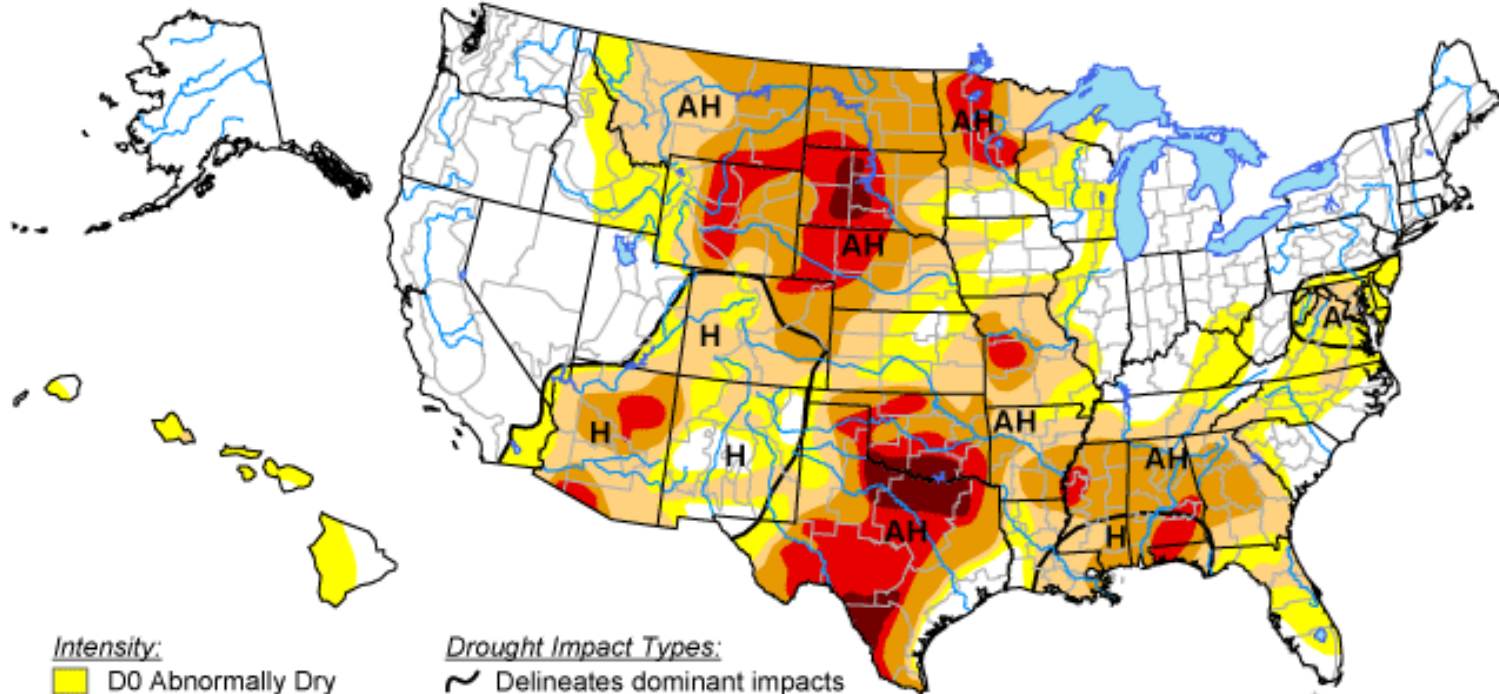
[www.EnergyIndependenceDay.org](http://www.EnergyIndependenceDay.org)

Intertribal COUP








# U.S. Drought Monitor


August 22, 2006  
Valid 8 a.m. EDT



Intensity:

-  D0 Abnormally Dry
-  D1 Drought - Moderate
-  D2 Drought - Severe
-  D3 Drought - Extreme
-  D4 Drought - Exceptional

Drought Impact Types:

-  Delineates dominant impacts
- A = Agricultural (crops, pastures, grasslands)
- H = Hydrological (water)

The Drought Monitor focuses on broad-scale conditions. Local conditions may vary. See accompanying text summary for forecast statements.

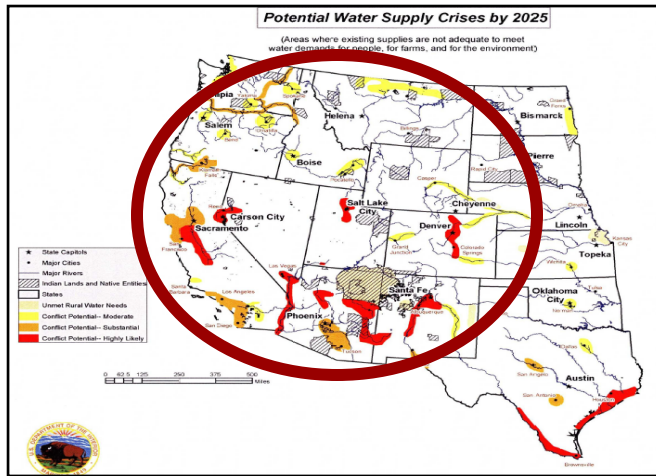
<http://drought.unl.edu/dm>



Released Thursday, August 24, 2006

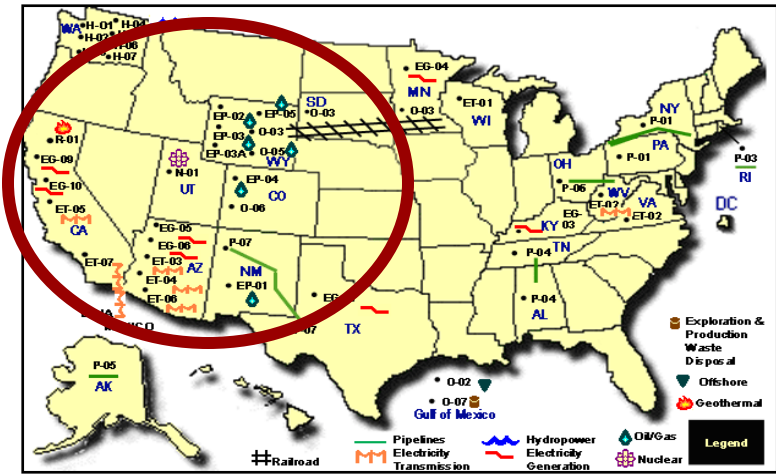
Author: Brian Fuchs, National Drought Mitigation Center

# Predicted Western Water Crises Areas Do Not Consider Proposed Energy Development Projects



U.S. Bureau of Reclamation

Potential Water Supply Crises Areas  
Where existing supplies are not  
adequate to meet water demands.



White House Energy Task Force

Proposed Electricity Generation and  
Associated Transmission Projects  
Depend on adequate water supplies.

***Rights to Water Supplies: Single Greatest Constraint on Future  
Energy Development and Greatest Threat to Tribal Water Rights.  
Wind produces lower cost utility scale electricity  
without consuming water!***

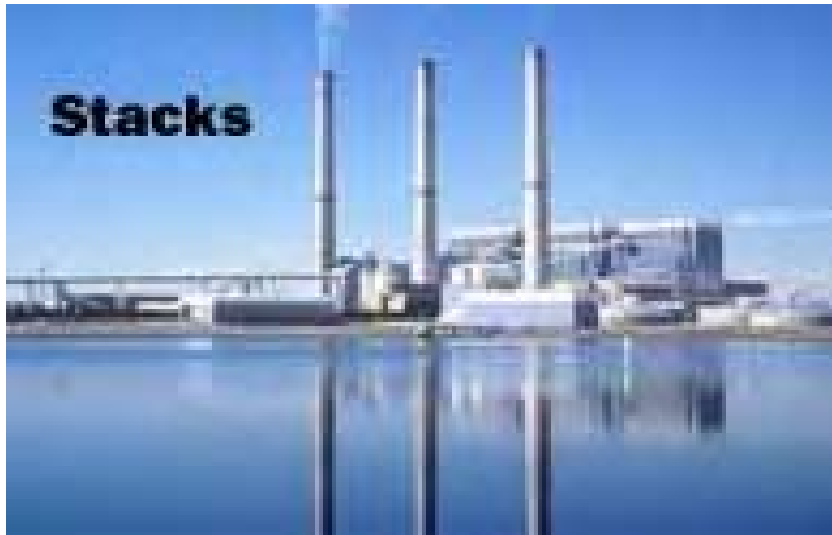
[www.NativeWind.org](http://www.NativeWind.org)



**Intertribal COUP**



# Conventional electricity generation consumes thousands of gallons of water per minute!!



Induced-draft fans, located near the stack, pull the exhaust gases through the environmental equipment and send it up the stack. **On cold days, the white plume from the stack of this type of plant is actually just water vapor condensing. On hot days, even though the plant is operating, stack emissions are clear.**

Source: Basin Electric website



The hot water is pumped from the condenser to the top of the cooling tower. It cascades to the bottom against cool air being forced up by two dozen 22-foot diameter fans at the base of the cooling tower. **Cooling takes place by evaporating thousands of gallons of water per minute from each tower.** Not all plants use cooling towers; some pump water from a lake or river and return it.

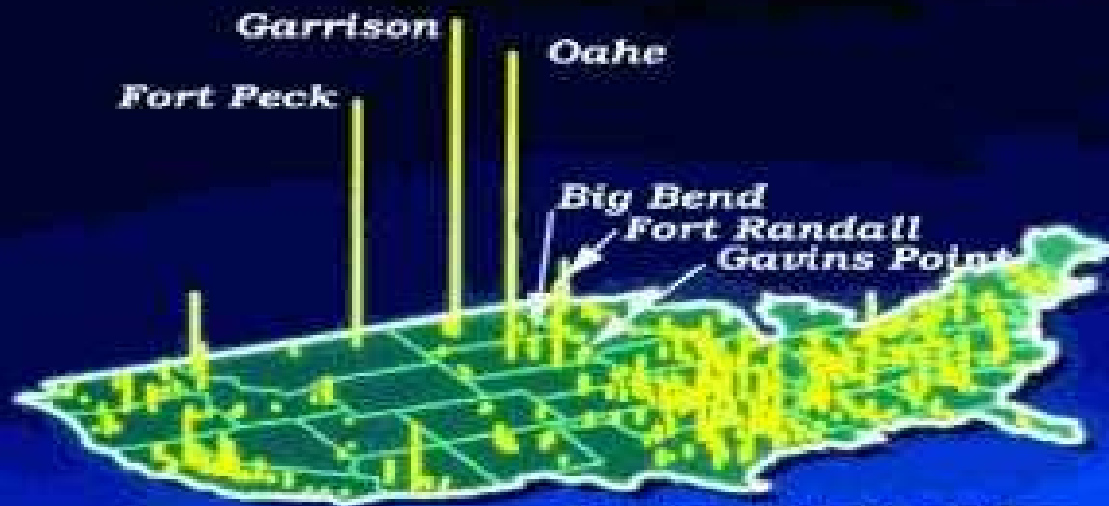
**Intertribal Council On Utility Policy**



[http://www.nwo.usace.army.mil/html/Lake\\_Proj/hydropower.html](http://www.nwo.usace.army.mil/html/Lake_Proj/hydropower.html)



## *Storage Capacity of Corps Lakes*



*Vertical Height of Bar  
Indicates Relative Volume*

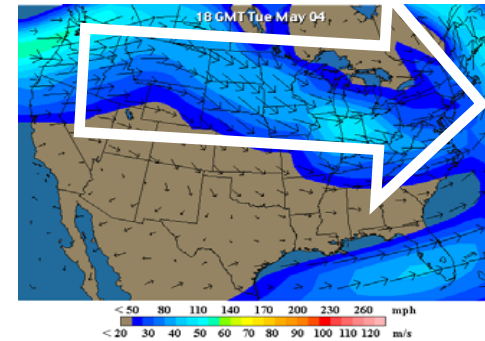
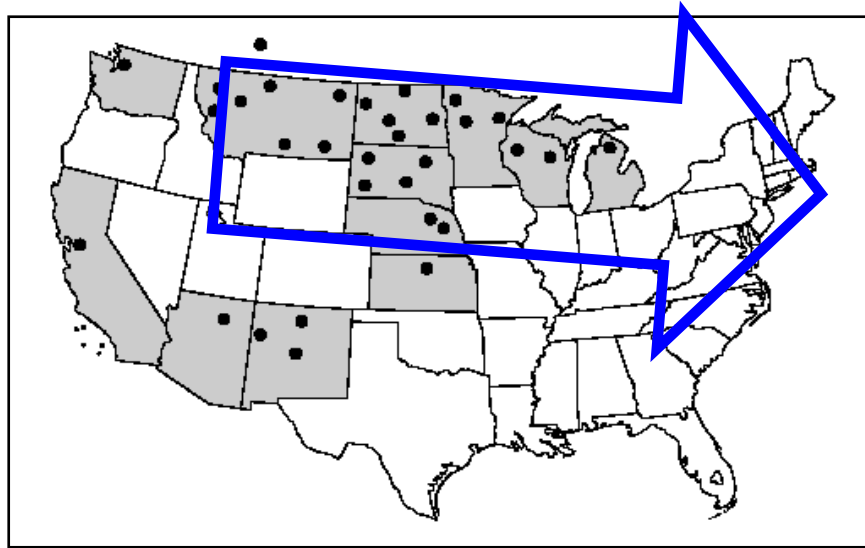
# Western Area Power Administration

- ❖ One of four power marketing administrations within the U.S. Department of Energy
- ❖ Markets and transmits federally produced hydroelectric power
- ❖ Approximately 3300 MW of load and 2000 MW thermal generation
- ❖ Western's 636 wholesale power customers include cooperatives, municipalities, public utility districts, and project use customers.



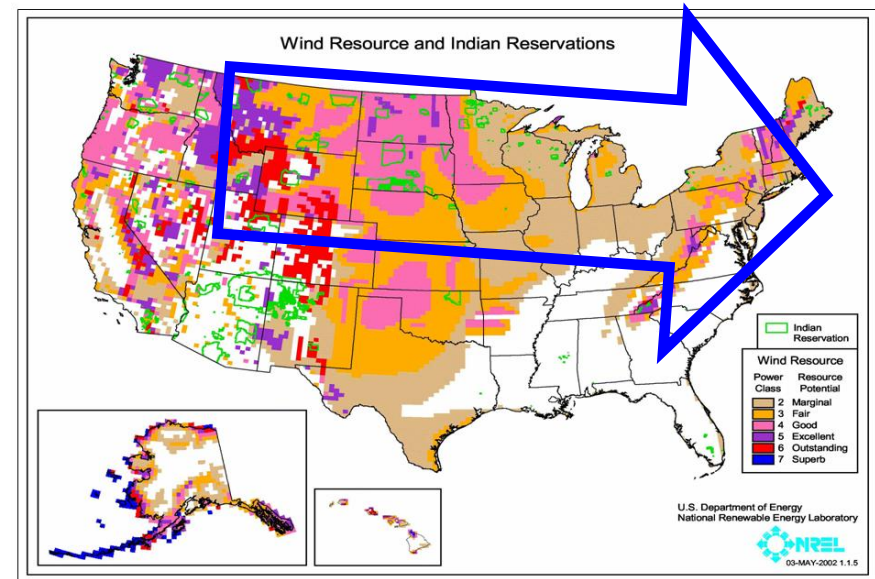


# Tribal Colleges and Wind Resources



## Prevailing Windshed

- Climate/Natural Resource monitoring training/projects
- Meteorological Data Centers
- Wind Development Training courses for Reservation job creation and employment
- Wind Forecasting along the Windshed for value-added firm power sales into the market



# Restoring and Recharging “The Federal Renewable Energy Grid”



*Serving the West  
with Federal Hydropower*

## *... And Tribal Renewable Energy*

- Cities & Tribes are on WAPA grid as eligible WAPA “Preference Customers”
- Federal trust responsibility to Tribes
- Sustainable Homeland Economies
- Great Wind/Hydro Dynamo Potential
- Diminishing Hydropower Resource
- Clean Air Quality and Attainment
- The grid, once 100% renewable, is now only 20% hydropower and 80% coal
- Federal Renewable Energy Grid 20% hydro & 30% wind / 50% coal-gas



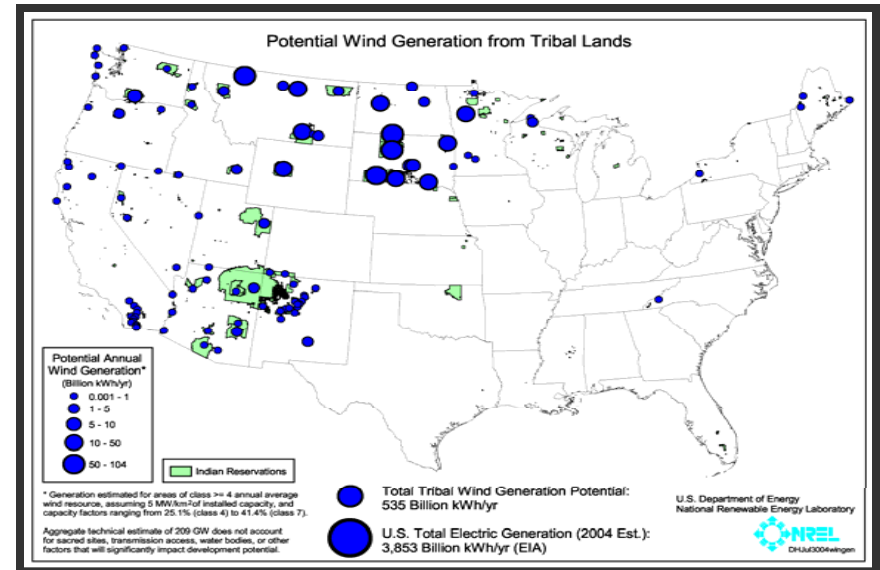
# Intertribal COUP Plan For Partnership:

## *200 US Cities for Climate Protection*

*(ICLEI ~ International Council for Local Environmental Initiatives)*

## *American Indian Tribes and Nations*

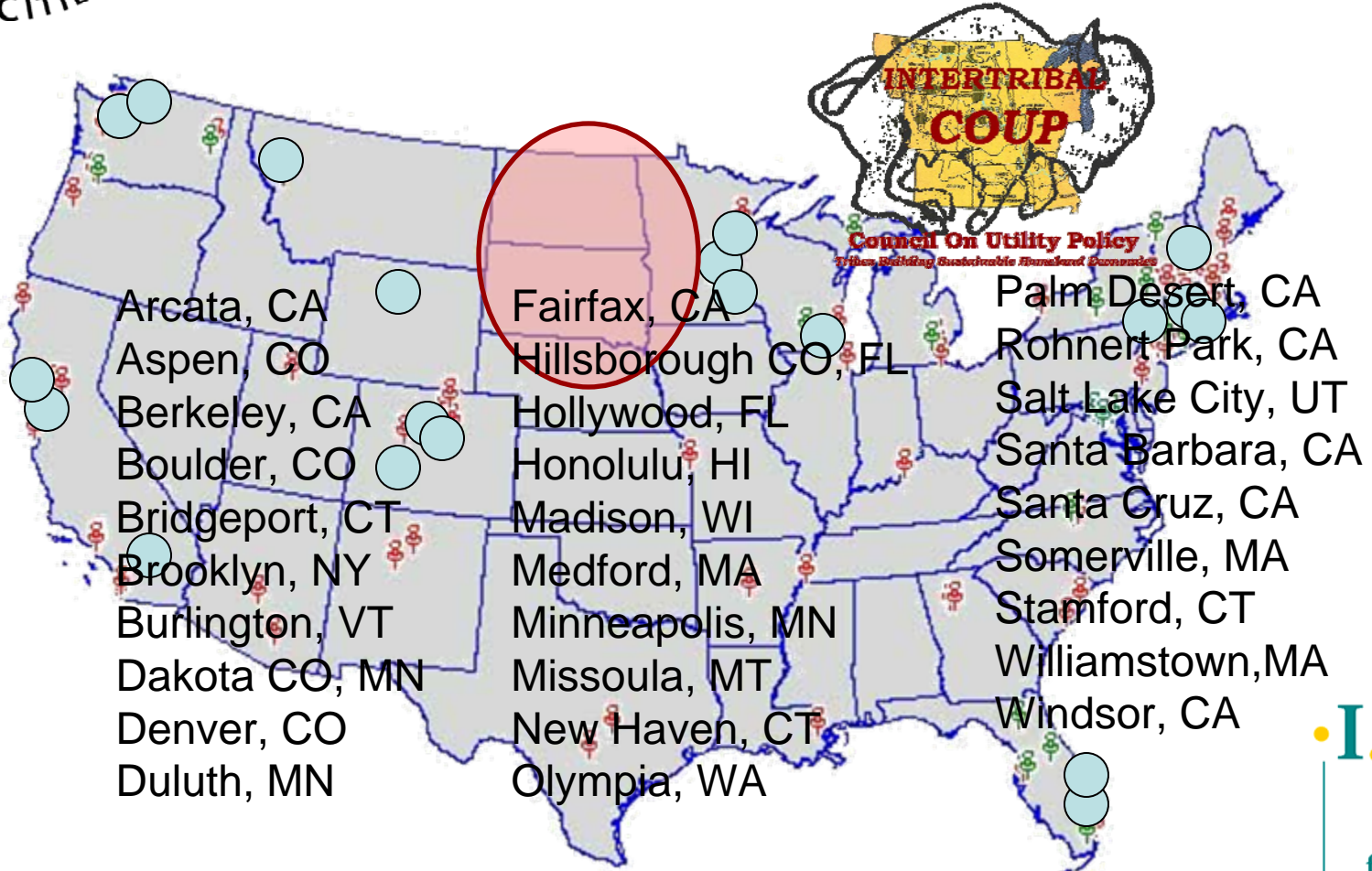
**Coupling Urban *Kyoto* Commitments with  
Tremendous Tribal Renewable Resources**







# American Leadership Energy Independence Day.org Local Government/Tribal Partnership Signers to Date



[www.NativeWind.org](http://www.NativeWind.org)



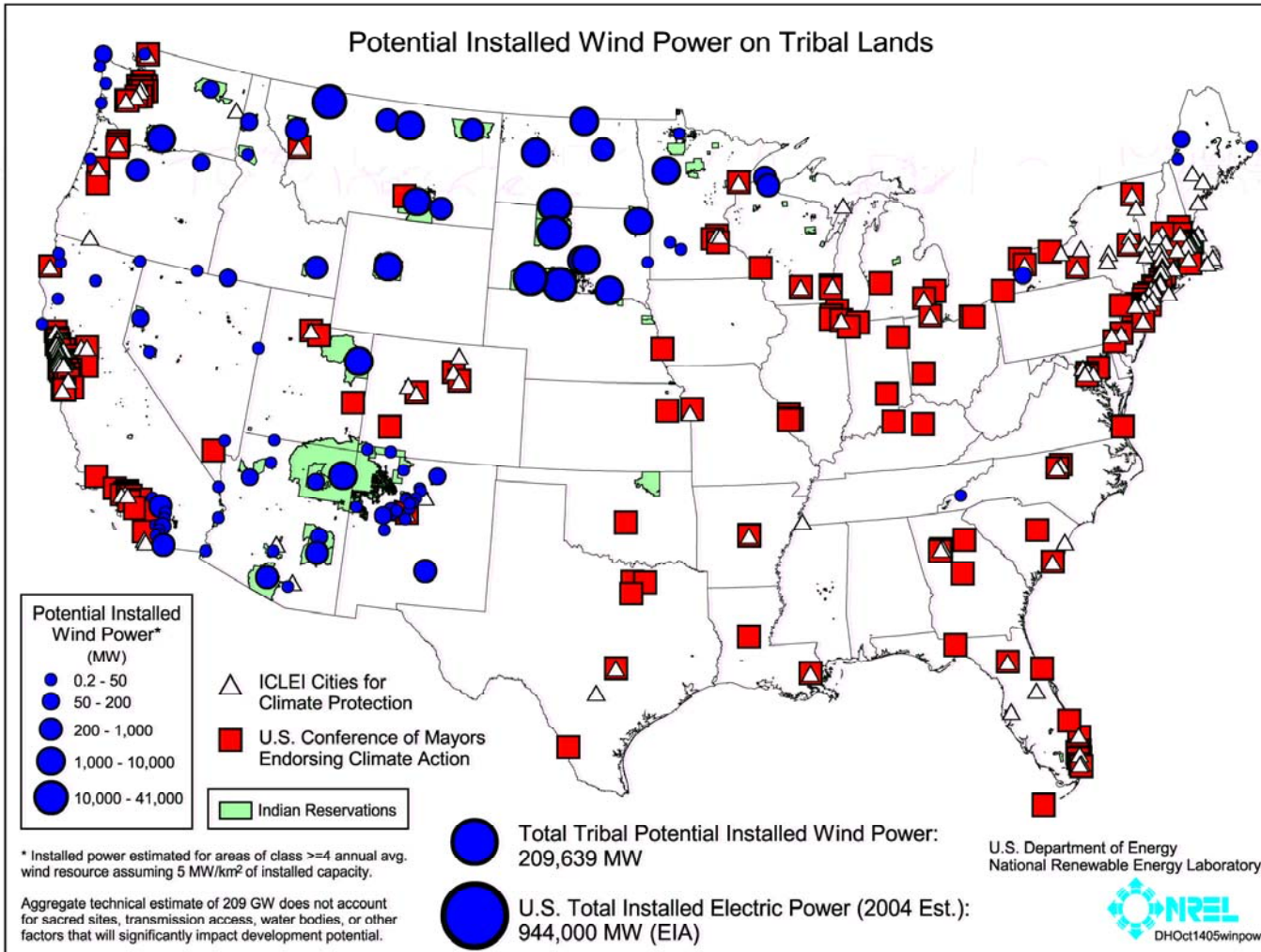
# COUP/ICLEI ~ Tribal City Partnership ICLEI and U.S. Conference of Mayors



**NATIVEWIND**  
ENERGY INDEPENDENCE  
INTERTRIBAL COUP



**Council Of Utility Policy**  
Tribal Policy Executive Roundtable

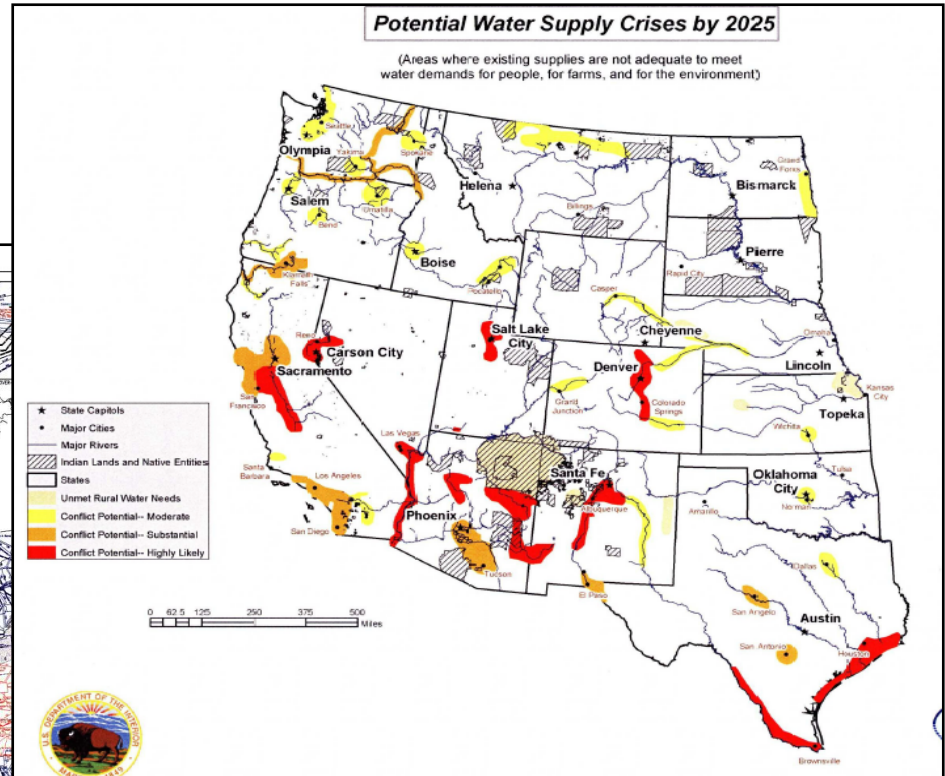
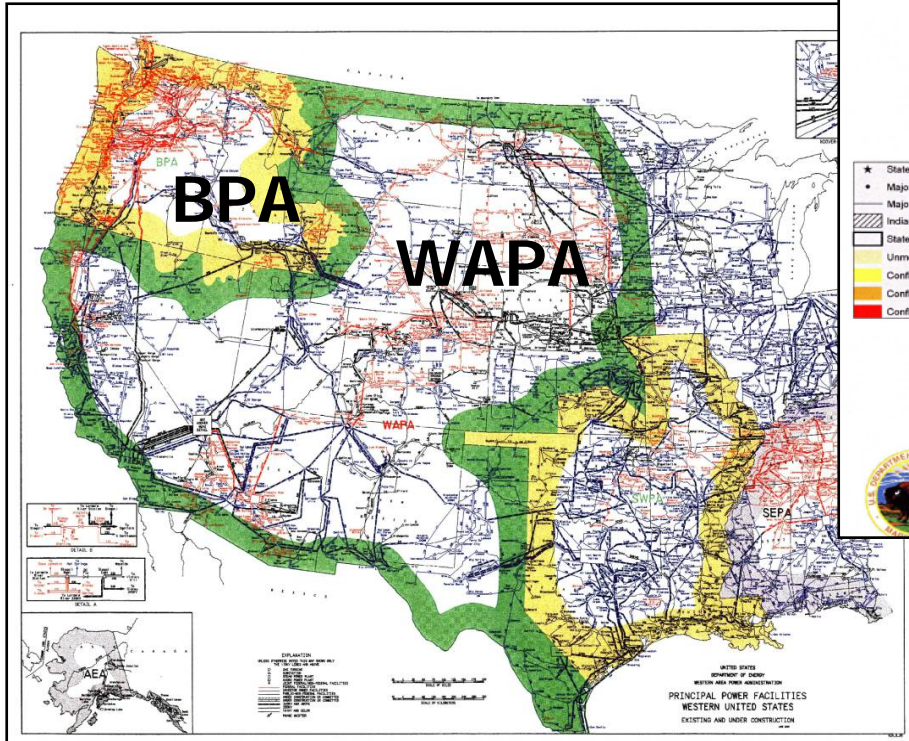




# National Renewable Energy Grids

BPA and WAPA Renewable Hydropower Grids (in red)  
Are The Backbone of the U.S. Western Transmission Grid

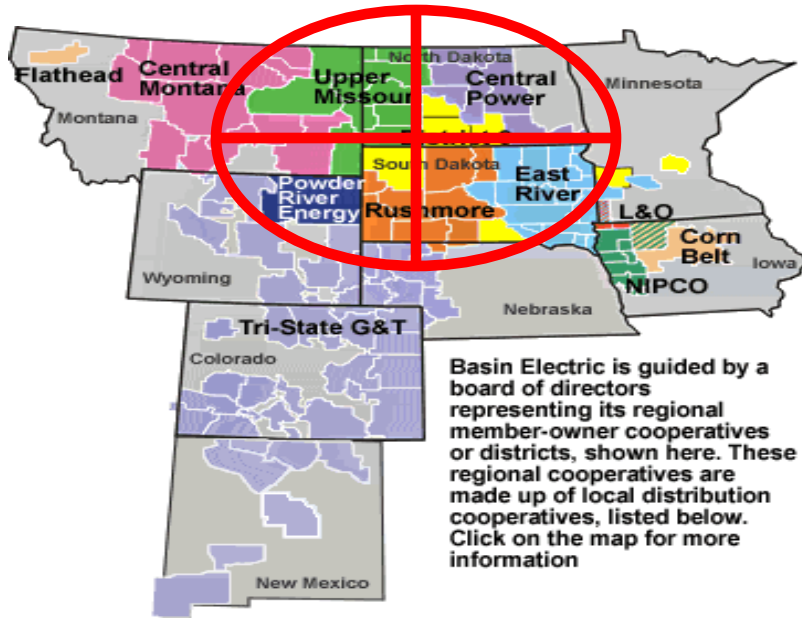
But WAPA hydropower is  
diminishing under drought



... and with regional growth  
and conventional generation.

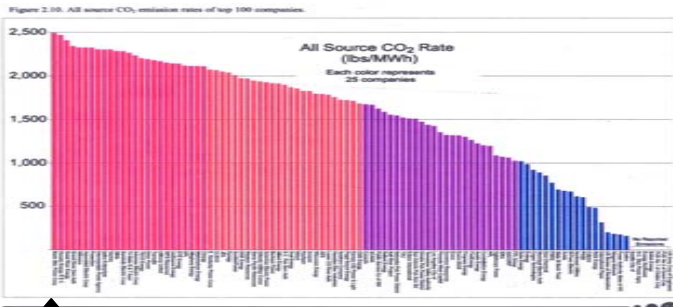


# BASIN ELECTRIC G&T RANKS #1



A recent study ranked the companies based on the amount of pollution produced relative to their power output. By that measure, Basin Electric Power Cooperative, a relatively small utility in Bismarck, ND, that relies primarily on coal-fired power plants to supply over 100 rural electric co-ops, was identified as producing the *highest output of carbon dioxide per megawatt-hour of electricity*. But the company contends that its plants are among the cleanest coal-burning plants in the nation.

## Highest Output of CO<sub>2</sub>/MWh in the U.S

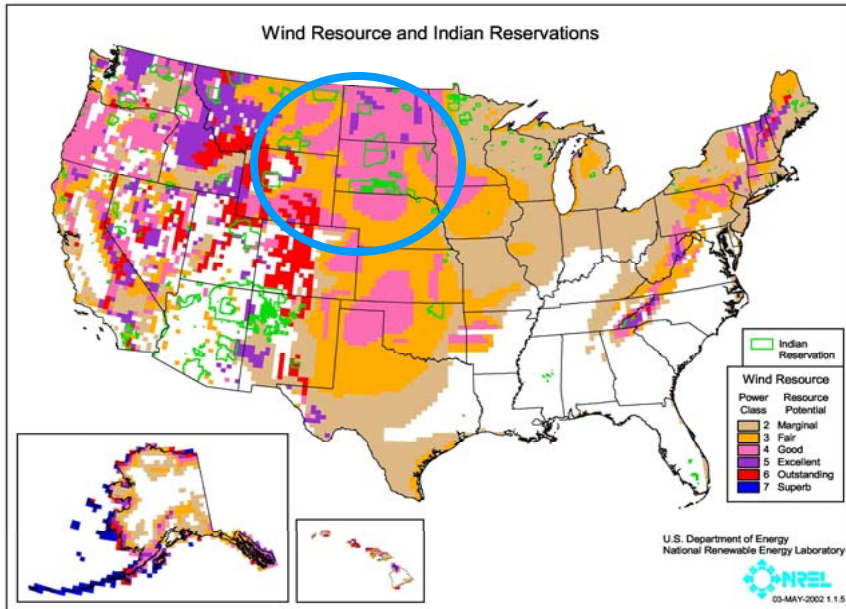


“Bench marking Air Emissions of the 100 Largest Electric Generation Owners in the U.S. - 2000.” Natural Resources Defense Council and Coalition for Environmentally Responsible Economies, and Public Service Enterprise Group (a Newark NJ utility). From “Study Ranking Utility Polluters Aims to Sway Emissions Debate”, By NEELA BANERJEE, NYT, March 21, 2002

↑ BASIN Electric Assn. RANKS #1

# Learning That We Live in A WINDSHED !

The Richest Renewable Energy Regime in the World is Just Upwind from the Region of Greatest Energy Consumption and Acid Rain Impacts in North America!!



Sustainable Homeland  
Economic Development  
based on Tribal Wind  
Energy Generation

[www.NativeWind.org](http://www.NativeWind.org)

Downwind communities  
support and benefit from  
Tribal Wind Energy

Intertribal COUP

# Fighting Climate Change with Renewable Energy:

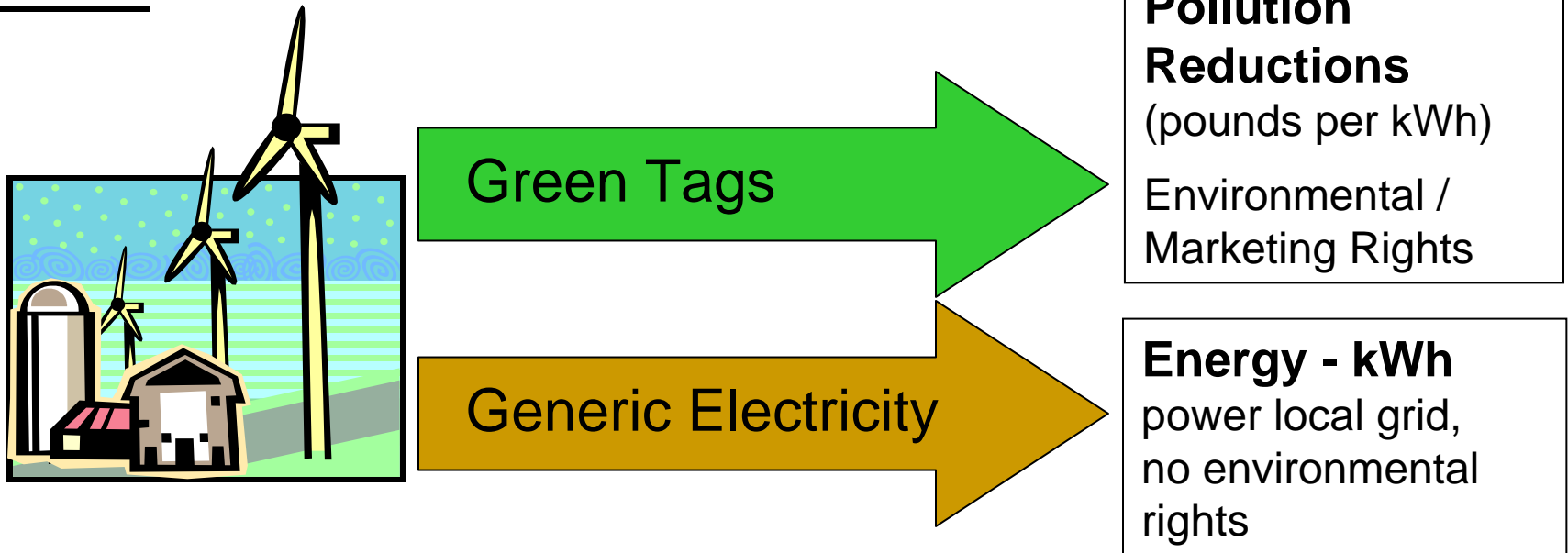
## Tribal Business Opportunities in the Emerging Green Tags Market

April 26, 2005





# Renewable Energy Sources Create Two Commodities:



**GREEN TAGS** – the rights to claim the pollution reductions from a certain quantity of renewable electricity, also known as “renewable energy credits” or “green certificates”

# *NativeEnergy* is now Native-Owned!



**Intertribal COUP Executive Council and the founders of *NativeEnergy***

**Intertribal COUP acquires majority stake in leading renewable energy marketer, on behalf of its member tribes.**

Rosebud, SD and Charlotte, VT (August 16, 2005) – *NativeEnergy*, a leading national marketer of Renewable Energy Credits (RECs) and greenhouse gas offsets, and the nonprofit **Intertribal Council On Utility Policy** (COUP), announced today that COUP has acquired a majority interest in *NativeEnergy*...

**[www.NativeWind.org](http://www.NativeWind.org)**

# About *NativeEnergy*...

- Renewable energy marketing company
- Native American ownership 2005
- Business Focus:
  - **Fighting Global Warming**
    - with simple, effective and low cost services
  - **Driving Construction of Renewable Energy Projects**
    - wind, biogas and solar
  - **Supporting Special Projects**
    - Native American
    - Farmer-owned, or
    - charitable-purpose



# Marketing Tribal Green Tags

## Reaching out to the marketplace...

**SHE JUST LET 12 TONS SO CAL YOU!**

Lose 12 tons of carbon dioxide emissions – the kind of greenhouse gas that cause global warming. Join thousands who are fighting back against climate change, the most important environmental issue of our time.

Become a #WindBuilder™ member today! You'll help build the first Native American-owned large-scale wind turbine. You'll have the same impact on global warming as if you powered and heated your home entirely with wind energy for a whole year. Most homes use electricity made by burning coal, natural gas and oil, which causes more CO<sub>2</sub> emissions than any other industrial source.

The last ten years have been the warmest on record and it just keeps getting warmer. So what are you waiting for? The Timberland Co. isn't waiting. Neither is Go-Op America or Ben & Jerry's. These agents of change and more have already become #WindBuilder™ Business Partners and they've been joined by individual #WindBuilder™ members all across the country. Now it's your turn.

Become a #WindBuilder™ member now. It costs as little as 17 cents a day. Join us! You'll feel lighter than you have in years.

**NativeEnergy**  
Bringing New Renewables To Market

Sign Up Now!  
Go to [www.nativeenergy.com/123](http://www.nativeenergy.com/123)  
or call: 1-800-924-6826

\*The average U.S. household is responsible for 17 tons of CO<sub>2</sub> emissions each year.

**They know how to fight global warming... Do you?**

Students at the #Wind School on the Round Bay Seaside Reservation understand the benefits of renewable energy sources. By helping build one wind farm, you will reduce consumption of fossil fuels and keep tons of carbon dioxide emissions out of the air – the kind of greenhouse gases that cause global warming. Join thousands who are fighting back against climate change, the most important environmental issue of our time.

Become a #WindBuilder™ member today. You'll help build the first Native American-owned large-scale wind turbine, which will be located at the Round Bay Reservation. You'll have the same impact on global warming as if you powered and heated your home entirely with wind energy for a whole year! Now homes use electricity made by burning coal, natural gas and oil, which causes more CO<sub>2</sub> emissions than any other industrial source.

Sign up today and reduce CO<sub>2</sub> emissions! Go to [www.nativeenergy.com/Mojo](http://www.nativeenergy.com/Mojo) or call: 1-800-924-6826

The last ten years have been the warmest on record and it just keeps getting warmer. So what are you waiting for? The Timberland Co. isn't waiting. Neither is Go-Op America, Ben & Jerry's or Stonyfield Farm. These agents of change and more have already become #WindBuilder™ Business Partners and they've been joined by individual #WindBuilder™ members all across the country. Now it's your turn.

Become a #WindBuilder™ member now. It costs as little as 17 cents a day. Join us today, and help protect your children's future!

Become a #WindBuilder™ member now. It costs as little as 17 cents a day. Join us today, and help protect your children's future!

**NativeEnergy**  
Bringing New Renewables To Market

\*The average U.S. household is responsible for 17 tons of CO<sub>2</sub> emissions each year.

**The First Native American Wind Turbine Now Stands Tall...**

**You can help build the next!**

Take a meaningful step in the fight against global warming. With #WindBuilder™ you'll help keep thousands of tons of global warming pollution out of the air.

Join our #WindBuilder™ partners, including the Timberland Co., Ben & Jerry's, Dave Matthews Band, Stonyfield Farm, CDF Inc., Shalika Corporation, WCC, MusicMatters Co-op, America's Clean Air-Cool Planet and many more businesses and individuals across the nation.

They all helped build the first Native American owned large-scale wind turbine to fight global warming. You can help build the next!

Joining #WindBuilder™ is fast, easy, and costs only pennies a day!

**NativeEnergy**  
Bringing New Renewables To Market

Take Action Today  
by visiting:  
[www.nativeenergy.com/Mojo](http://www.nativeenergy.com/Mojo)  
or call: 1-800-924-6826

Photo by the Dept. of the Interior, Bureau of Reclamation, Round Bay Seaside Reservation, Alaska.

## ...fighting global warming!

**NativeEnergy**  
Bringing New Renewables To Market

[www.NativeEnergy.com](http://www.NativeEnergy.com)

[www.NativeWind.org](http://www.NativeWind.org)



**Intertribal COUP**

Our business customers and/or marketing partners include



Dave Matthews Band



# The Intertribal COUP Wind Energy Plan receives a World Clean Energy Award for “Courage”







*Sitting Bull*

So ...

*"Let Us Put Our  
Minds Together and  
See What Life We  
Will Make for Our  
Children."*



**ALLIANCE OF SCIENCE,  
BUSINESS, GOVTS, AND  
NATIVE LEADERS:**

**NATIVE  
RENEWABLES:  
ENERGY SOLUTIONS  
FOR TRIBES AND  
AMERICA**

**NATIVEWIND**  
**ENERGY INDEPENDENCE**  
INTERTRIBAL COUP

[WWW.NATIVEWIND.ORG](http://WWW.NATIVEWIND.ORG)

