

# **U.S.-Mexico Border Tribal Lands and Toxic Releases: PRTR Case Study and Next Steps**

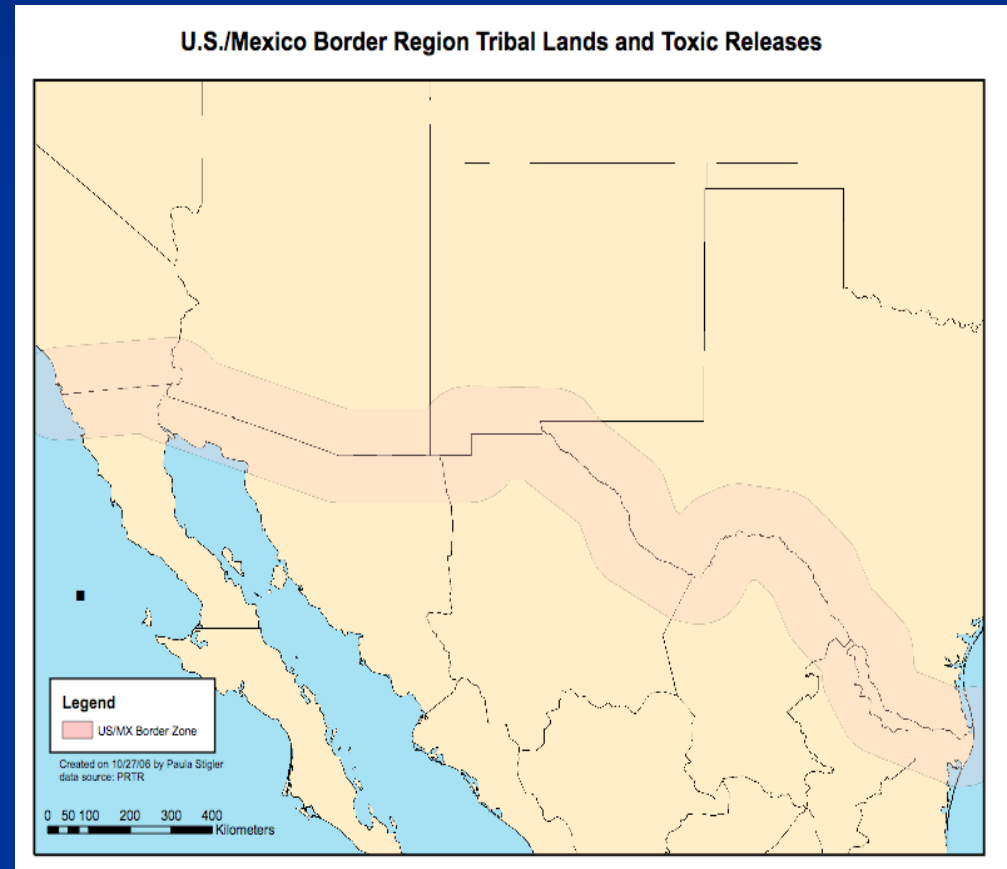
Paula Stigler and Hiram Sarabia

Winnipeg, Canada

September 25, 2007

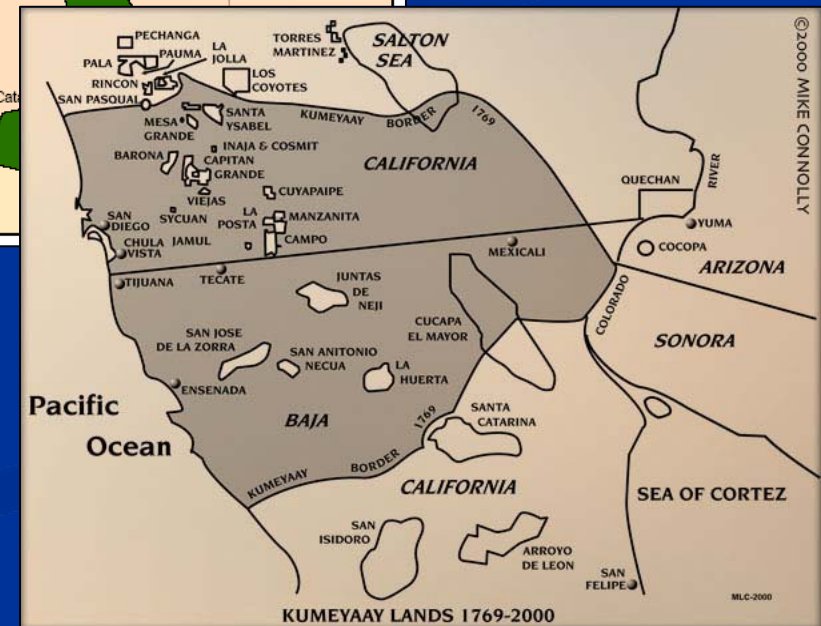
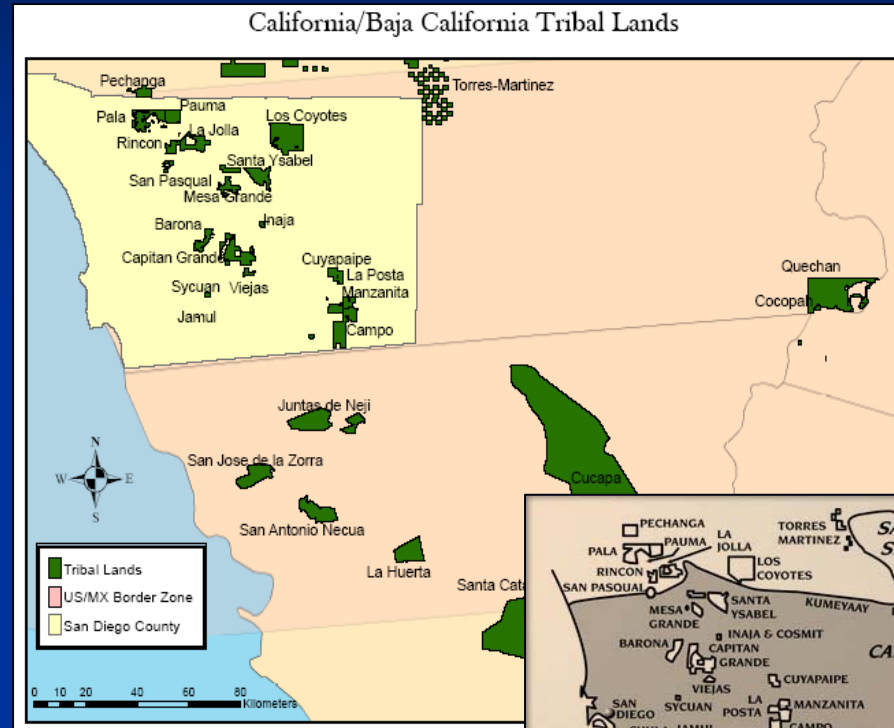
# Tribes and Indigenous groups along the U.S. Mexico Border

- 26 federally recognized tribes in the US border region
- 4 native indigenous groups in the Mexico border region

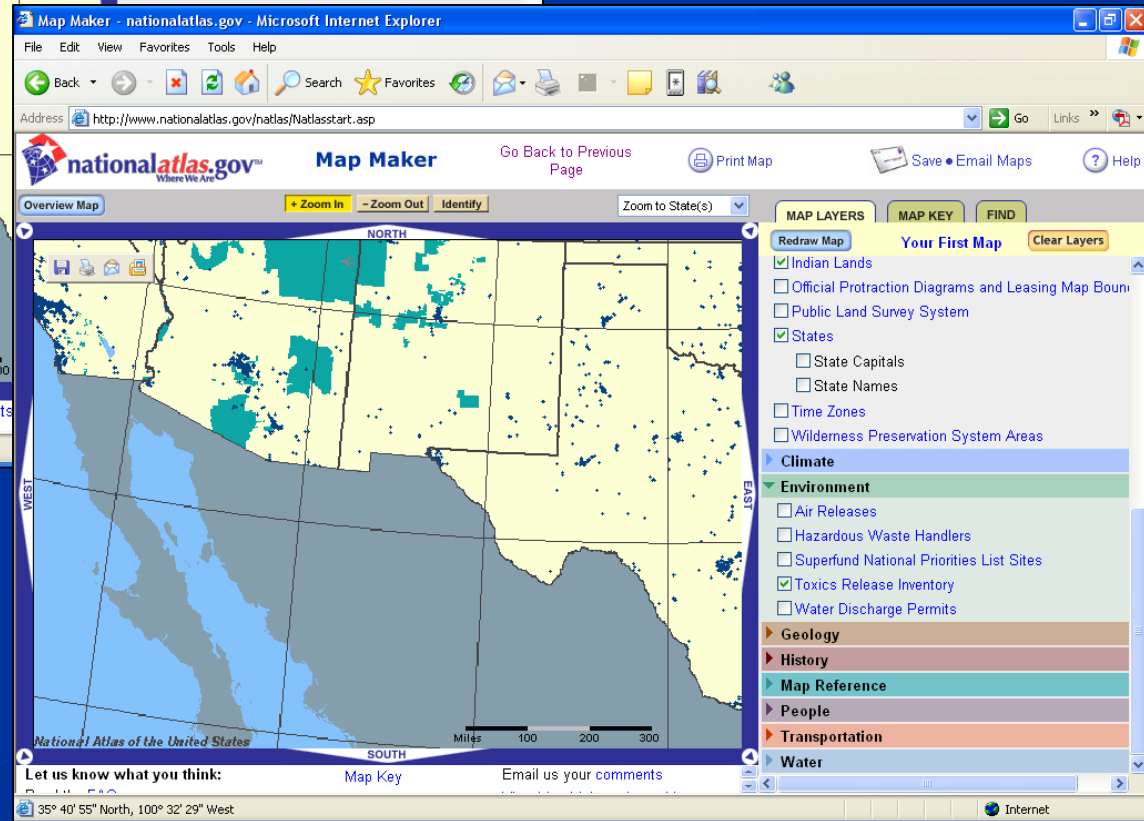
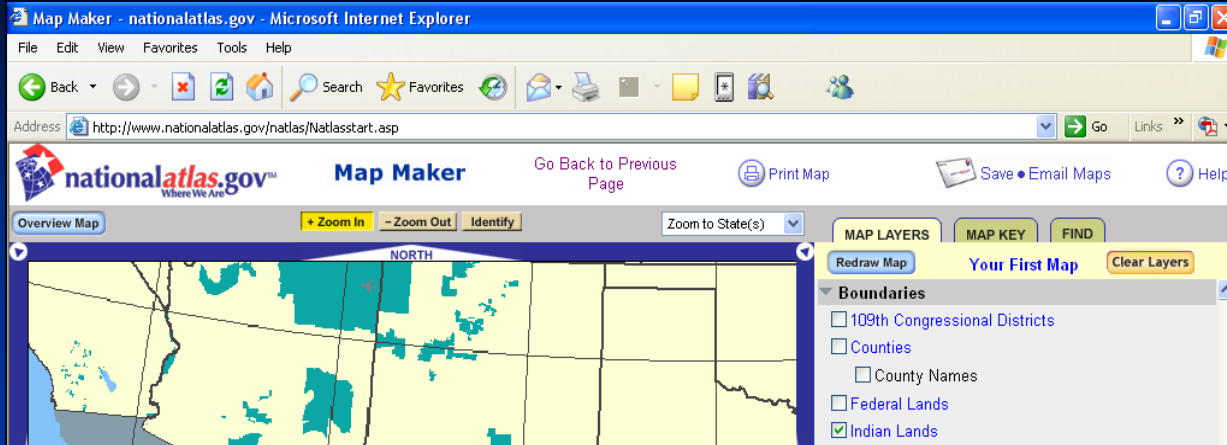


# Tribes and Indigenous groups along the U.S. Mexico Border in the CA/BC Region

- 22 tribes on the U.S. side
- 6 indigenous communities on the Mexico side



# Internet mapping tools to locate Tribal Lands and Facilities in the U.S.



**Border Tribal Lands**

**Border Tribal Lands  
and TRI facilities**

# Identify nearby facilities

The screenshot displays the National Atlas Map Maker interface. A map of California is shown with a red circle highlighting a facility. A pop-up window titled "Point Clicked" provides the following details:

- Longitude:** 116° 57' 10" West
- Latitude:** 33° 15' 41" North
- Elevation:** 500 to 999 feet
- State:** California
- Date of Admission:** September 9, 1850
- Order of Admission:** 31
- Printable Maps**
- Country:** United States
- Printable Maps**

The facility is identified as:

- Indian Lands**
- Name:** Rincon Indian Reservation
- Feature:** Indian Reservation
- Toxics Release Inventory**
- Facility Name:** Survival Systems International Incorporated
- Registry Identification Number:** 110000478714

The interface also includes a "MAP LAYERS" panel on the right with the following options:

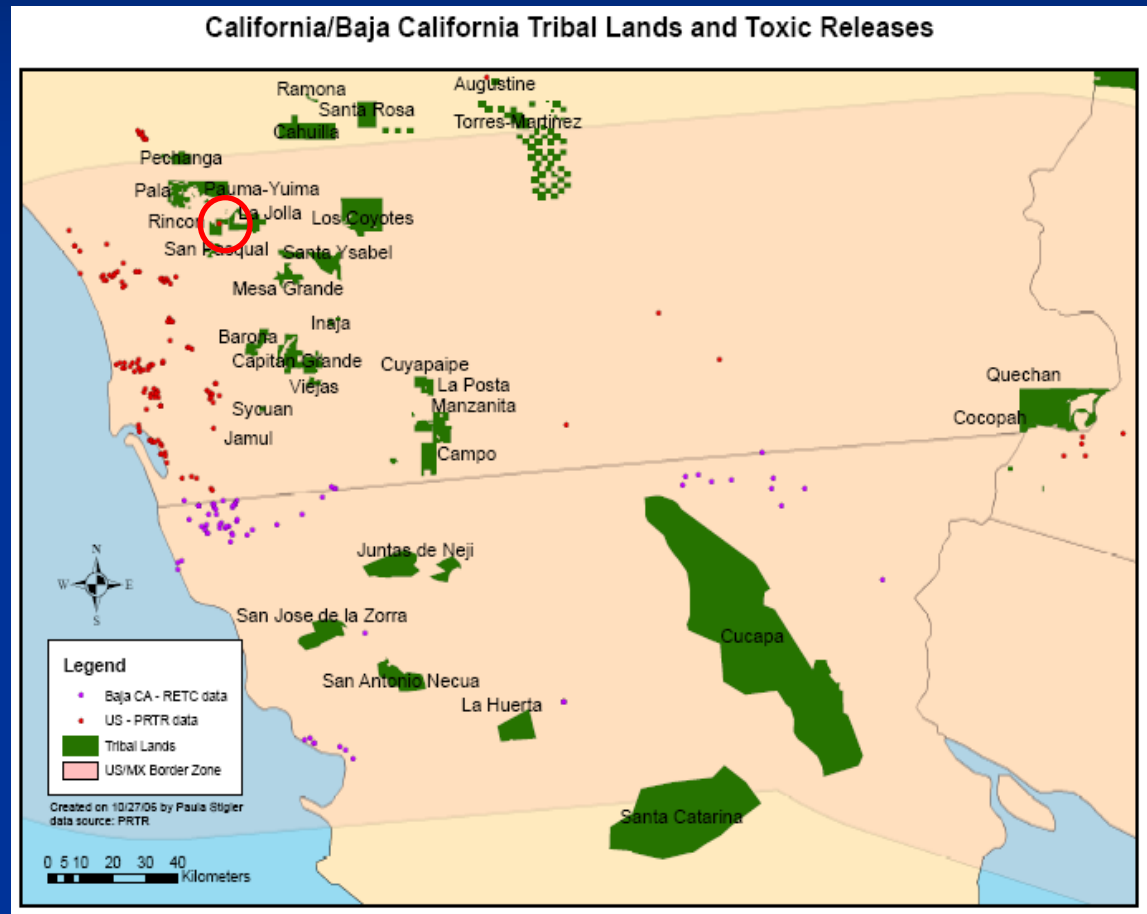
- Streams and Waterbodies
- Agriculture
- Biology
- Boundaries
  - 109th Congressional Districts
  - Counties
  - County Names
  - Federal Lands
  - Indian Lands
  - Official Protraction Diagrams and Leasing Map Boundaries
  - Public Land Survey System
  - States
    - State Capitals
    - State Names
  - Time Zones
  - Wilderness Preservation System Areas
- Climate
- Environment
  - Air Releases
  - Hazardous Waste Handlers
  - Superfund National Priorities List Sites

The bottom of the interface shows the coordinates: 33° 15' 45" North, 116° 56' 46" West.

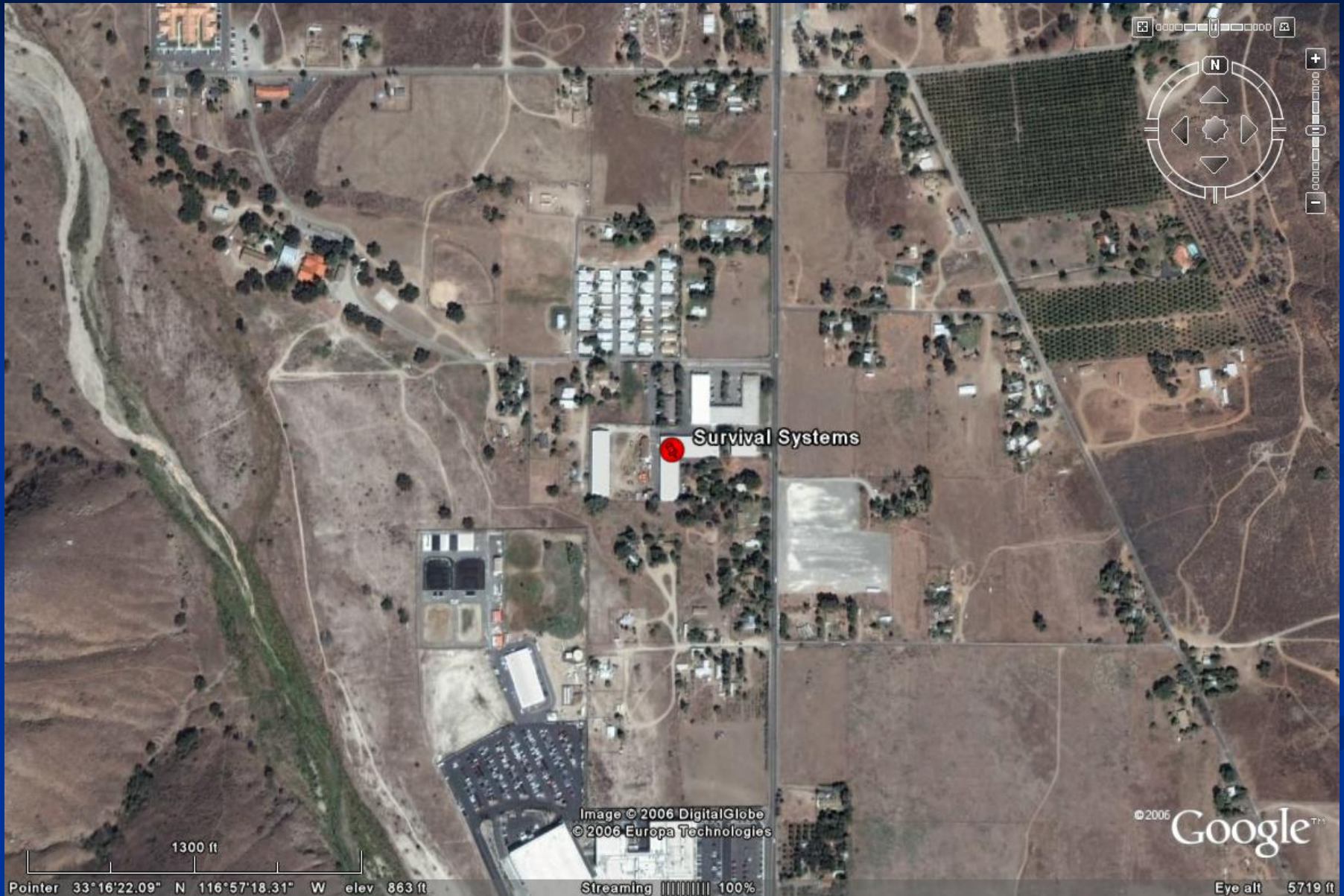
# Case Study

## Rincon Reservation

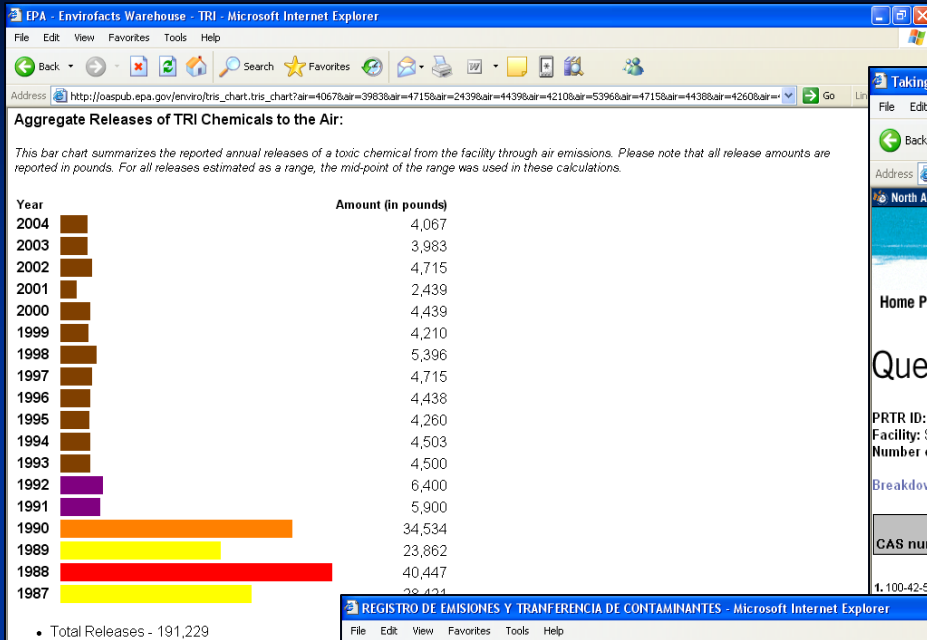
- Luiseño
- Located in Northeast San Diego County
- Approximately 3,918 acres
- Population of approximately 1,495
- 651 tribal members



# Location of SSI and nearby residences



# Query Facility Information



Taking Stock report - Microsoft Internet Explorer

Address: http://www.takingstockquery.org/index.php?varlan=english&output=entity&report\_type=fac&prtr\_id=32952

North American Commission for Environmental Cooperation

Home Page | About Taking Stock | Report FAQs | Query Builder | Resources

## Query Results: Facility (drill down)

PRTR ID: 92082SRVWL34140  
 Facility: SURVIVAL SYSTEMS INTERNATIONAL INC, VALLEY CENTER CA  
 Number of results: limited to top 50

Breakdown by chemical for this facility, for last year reported

CAS number	Chemical Name	On-site air emissions	On-site surface water discharges	On-site underground injection	On-site land releases	On-site r
1,100-42-5	Styrene	1,806	0	0	0	200

REGISTRO DE EMISIONES Y TRANSFERENCIA DE CONTAMINANTES - Microsoft Internet Explorer

Address: http://app1.semarnat.gob.mx/retc/index.php

SECRETARÍA DEL MEDIO AMBIENTE Y RECURSOS NATURALES  
 REGISTRO DE EMISIONES Y TRANSFERENCIA DE CONTAMINANTES  
 DIRECCION GENERAL DE SECCION DE LA CALIDAD DEL AIRE Y REGISTRO DE EMISIONES Y TRANSFERENCIA DE CONTAMINANTES

**DATOS GENERALES DE LOS ESTABLECIMIENTOS**

Búsqueda por:  
 Estado: **BAJA CALIFORNIA**  
 Delegación / Municipio: **Tijuana**

Realizar otra consulta

ESTABLECIMIENTO	SECTOR	CLAVE AMBIENTAL	ACTIVIDAD PR
Aluminio de Baja California SA de CV	Química	8A	GALVANOPLASTIA (EN PIEZAS METÁLICA
BOSE CORPORATION SA DE CV	Artículos y productos metálicos	8L	Manufactura y ensamble de bobinas amplifi
C-COR DE MEXICO, S.A. DE C.V.	Artículos y productos metálicos	8L	FABRICACION Y ENSAMBLE DE APARATOS ELECTROMECANICOS
CALINOR S.A. DE C.V.	Química	8M	PRODUCCION VENTA Y FABRICACION DE FOLIURETANO
Consolidated Repair de México S de RL de CV	Equipos y artículos electrónicos, eléctricos y domésticos	91	Reparación de productos electrónicos y eléctric
FUNDICION ARECHIOA S.A. DE C.V.	Metalurgia (incluye la siderurgica)	7T	FUNDICION Y MOLDEO DE PIEZAS DE HIER
Industrial de Grasas y Derivados, S.A. de C.V.	Alimenticio y/o de consumo humano	2T	Procesamiento de sebo crudo hueso y desper
Industrias SL S.A. de C.V.	Artículos y productos metálicos	8L	Electrónica
KAMIMEX S.A. DE C.V.	Química	8A	GALVANOPLASTIA (EN PIEZAS METÁLICA
LA VICTORIA S.A. DE C.V.	Alimenticio y/o de consumo humano	38	PREPARACION EMPOTELLADO Y DISTRIBI
OPA MEXICANA S.A. DE C.V.	Artículos y productos metálicos	8L	PRODUCCION DE PARTES METALICAS PAI

Lunes 08 de enero de 2007

ence (the "matched chemical set") in that year. before.

On-site surface water discharges	On-site surface water discharges
2003 % Change from 2002-2003	2002 2003 Change from 2002-2003 % Change from 2002-

Taking Stock

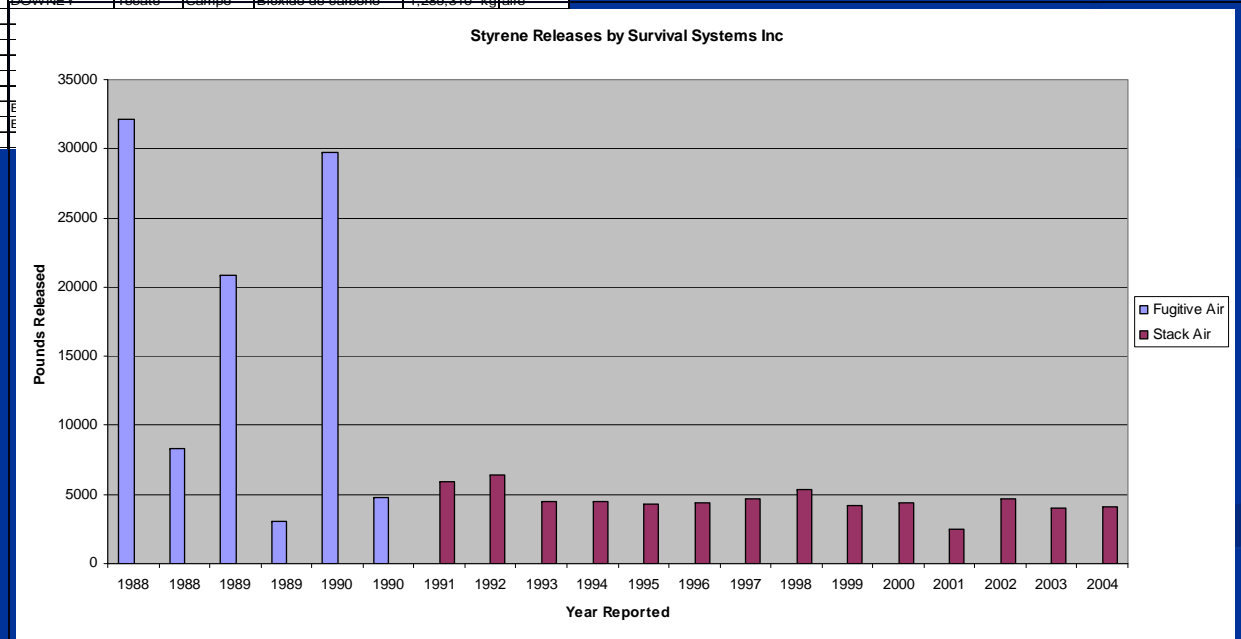
RETC

TRI

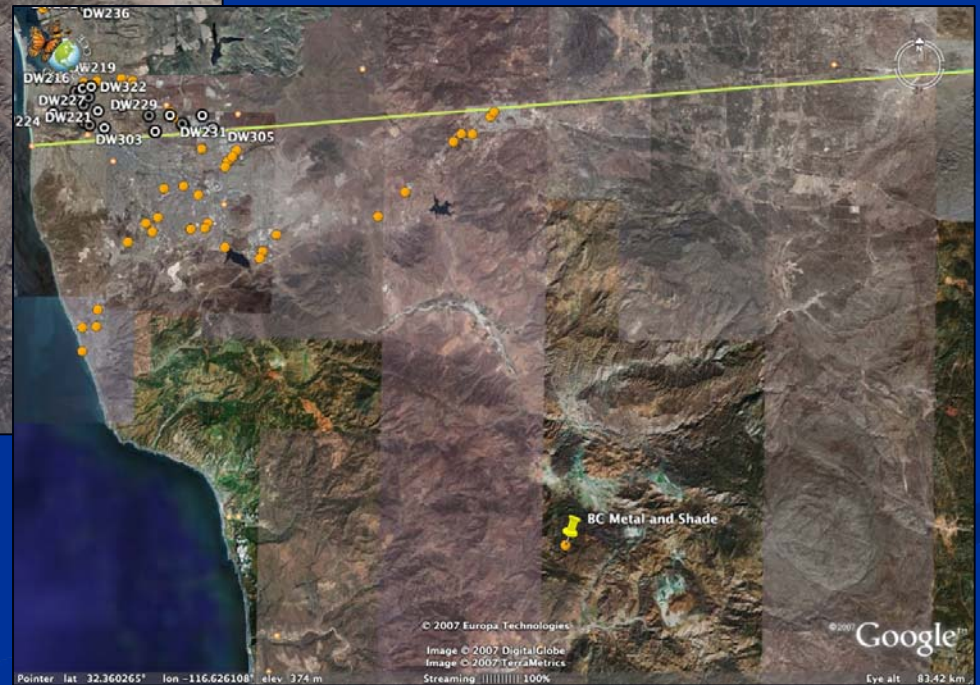
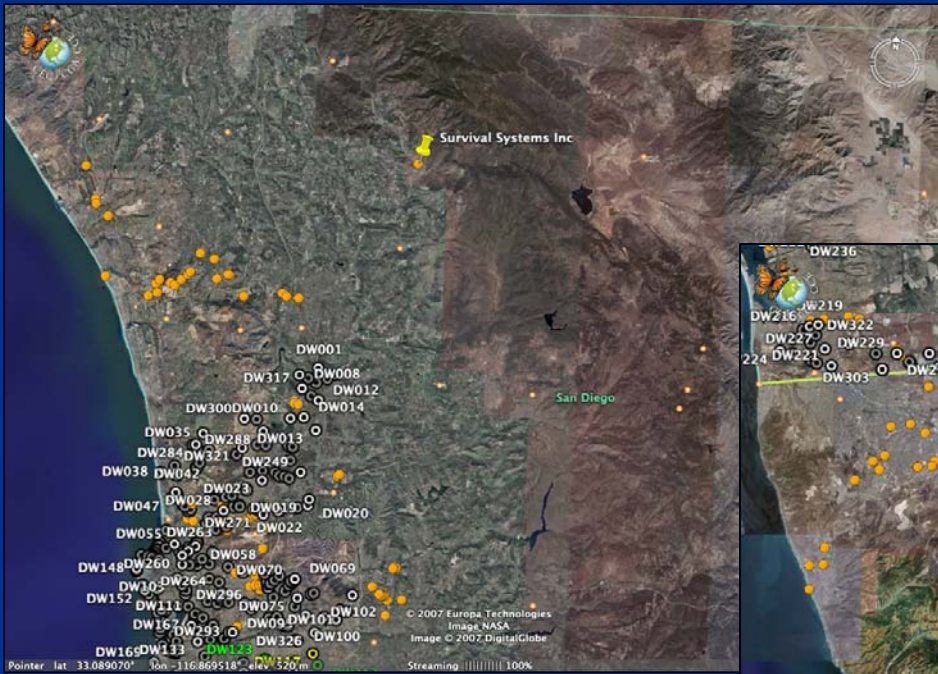


# Create an INVENTORY of facilities and releases

NAME	COLONIA	MUNICIP	Comunidad	Quimico	Cantidad	Media
CHROMALLOY S.A DE C.V.	ALAMITOS	Mexicali	Cucapa			
COMISION FEDERAL DE ELECTRICIDAD CAMPO Y	NA	Mexicali	Cucapa			
Energia de Baja California S. de R. L. d	Progreso	Mexicali	Cucapa	Arsenico	6 kg	agua
				Cromo	3 kg	agua
				Cianuro	70 kg	agua
Energia Azteca X. S. de R. L. de C. V.	Progreso	Mexicali	Cucapa			
Fundiciones San Martin o Félix de Jesús	División 2	Mexicali	Cucapa			
MAQUILADORA SAN DIEGO S. A DE C. V.	SATELITE	Mexicali	Cucapa			
PEMEX REFINACION T.A.D. MEXICALI		Mexicali	Cucapa			
QUIMICAL S.A. DE C.V.	COLORADO 10	Mexicali	Cucapa			
Termoeléctrica de Mexicali S. de R. L. d	Sonora	Mexicali	Cucapa	Oxido nitrico	578 kg	aire
				Cianuro	159 kg	agua
Thomson Displays Mexicana	Robledo	Mexicali	Cucapa	Cianuro	37 kg	agua
				Arsénico	5 kg	agua
				Cloruro de metileno	2520 kg	reciclado
				Cromo	522 kg	agua
				Mercurio	.01 kg	agua
				Niquel	8 kg	agua
				Piomo	578 kg	agua
ACABADOS DE CALIDAD TECATE S.A. DE C.V.	Maclovio Herrero	Tecate	La Huerta			
BC METAL AND SHADE S.A. DE C.V.	RANCHO PASO	Tecate	San Jose	Cianuro	.2 kg	agua
				Niquel	2 kg	agua
CERVECERIA CUAUHTEMOC MOCTEZUMA S.A. DE	ZONA CENTRO	Tecate	Campo	Bióxido de carbono	35,342,360 kg	aire
CERVECERIA CUAUHTEMOC MOCTEZUMA S.A. DE	DOWNEY	Tecate	Campo	Bióxido de carbono	1,289,310 kg	aire
Mac Tec S.A. de C.V.						
Transistor Devces de Mexico S. de R.L.						



# What's near your community?



# RESEARCH chemical/health INFORMATION

## ■ What to Research?

- Chemical specific info
- Regulations
- Short term health effects
- Long term health effects
- Carcinogenicity (Toxicity)
- Symptoms of exposure



## ■ Where to research?

- Internet Resources
  - Agency for Toxic Substances and Disease Registry – ToxFAQs [www.atsdr.cdc.gov/toxfaq.html](http://www.atsdr.cdc.gov/toxfaq.html)
  - Integrated Risk Information System (IRIS) [www.epa.gov/iris/](http://www.epa.gov/iris/)
  - Scorecard [www.scorecard.org/chemical-profiles/](http://www.scorecard.org/chemical-profiles/)
  - Right-to-know Hazardous Substance Fact Sheets
  - Google
- Local Health Clinic and Library
- University

# Conduct community education and outreach

Use visuals such as graphs and pamphlets to share information with the community leaders

**Scorecard**  
THE POLLUTION INFORMATION SITE

**Investigate Pollution Topics**

**TOXICS**

- Toxic Chemical Releases
- Lead Hazards
- Superfund

**AIR**

- Smog and Particulates
- Hazardous Air Pollutants

**CHEMICAL PROFILES | Chemical Profile**

Chemical: STYRENE  
CAS Number: 100-42-5

**Chemical Profile for STYRENE (CAS Number: 100-42-5)**

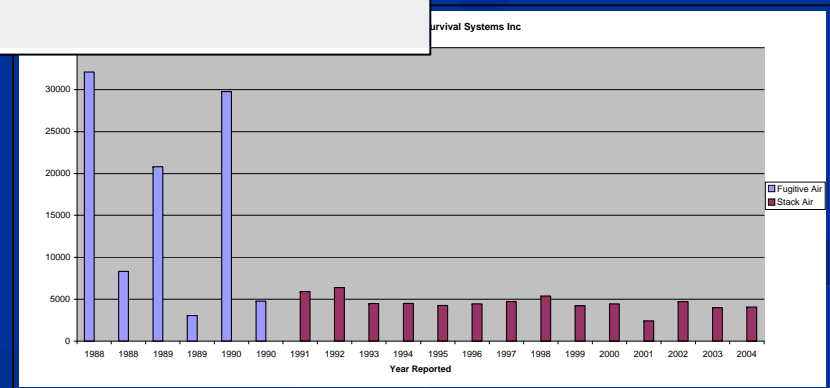
- [Human Health Hazards](#)
- [Hazard Rankings](#)
- [Chemical Use Profile](#)

[Chemicals by Reported Environmental Releases in the United States](#)

[Air Quality Coverage](#)

[Guidance for Identifying Chemical Hazards](#)

[Information Needed for Safety Assessment](#)



# Conduct community **OUTREACH** and **EDUCATION** and define **NEXT STEPS**

- Conduct a **community evaluation**
  - Talk to community members about health problems, concerns and observations and conduct health surveys
  - Complete ecological/human health risk assessment
- Use outside resources available to your community including: **health agencies, clinics and universities**
- **Monitor** chemicals of concern if possible



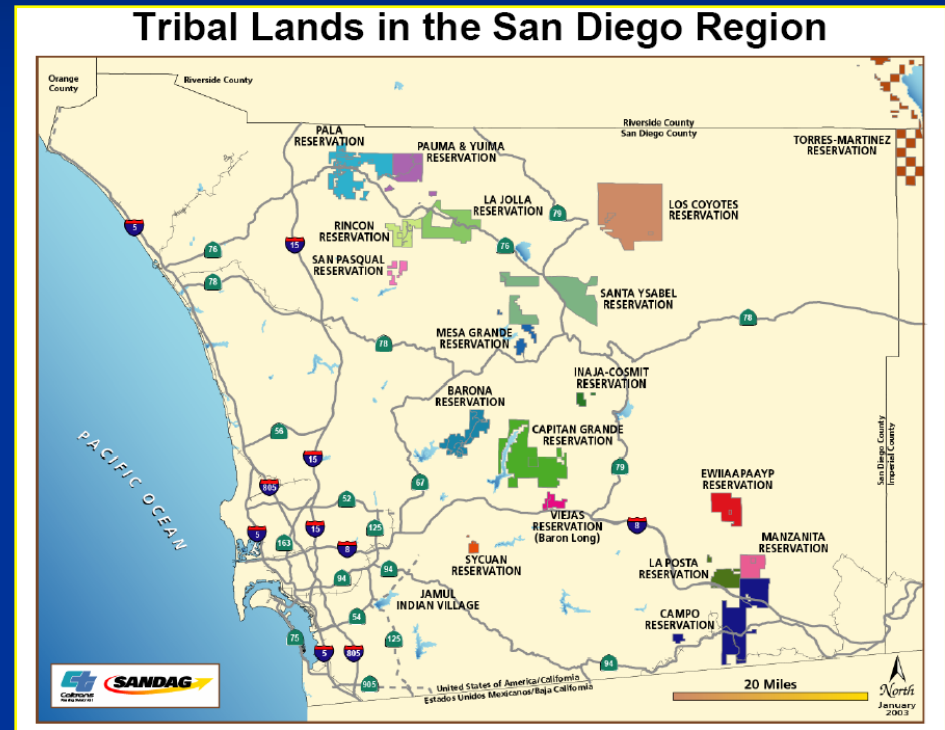
# Capacity Building and Collaboration

- Printed materials and direct communication
- Information is given to the communities, but its up to the communities to decide how and when to take action
- Community-centered resource networks



# Tribal Environmental Health Collaborative

- Increase capacity and resources through collaboration
- Complete a needs assessment
- Develop an action plan
- Provide access to important resources (e.g. PRTR, tribal workbench)



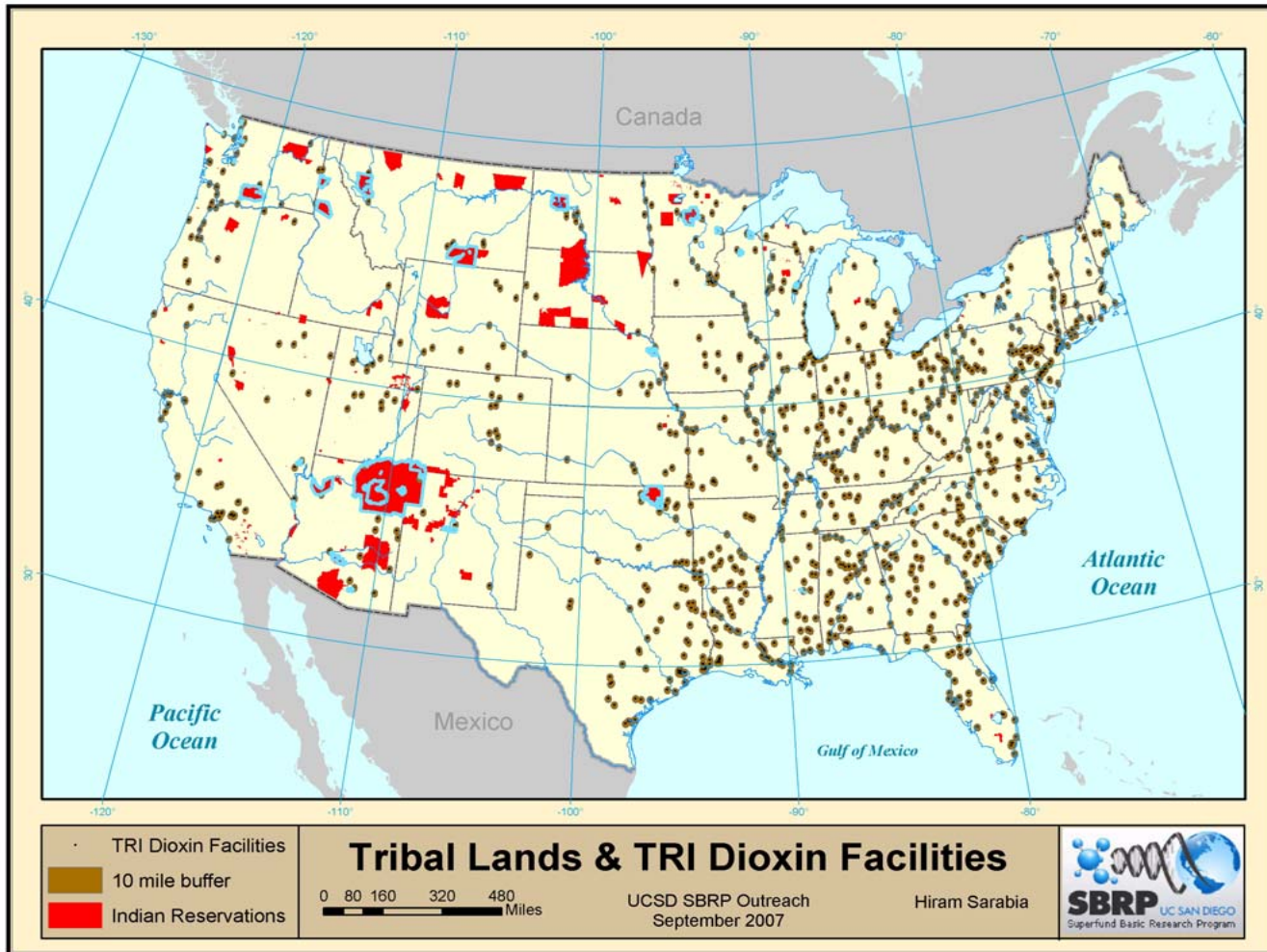
# Tribal Workbench for Environmental Health

- Build EH capacity of tribal communities
- Tribal Environmental Knowledge and Life ways
- Transfer of SBRP knowledge, information and technologies
  - IT
  - Biomolecular





# Tribal Workbench for Environmental Health



# Contact

Paula Stigler

The San Diego Foundation

619-814-1366

[paula@sdfoundation.org](mailto:paula@sdfoundation.org)

Hiram Sarabia

University of California, San Diego

Superfund Basic Research Program

619-675-2665

[hsarabia@ucsd.edu](mailto:hsarabia@ucsd.edu)

---