



Location Map

FROM DAM SITE

- To Ottawa - 17 Miles
- To Topeka - 35 Miles
- To Lawrence - 43 Miles
- To Kansas City - 71 Miles
- To Wichita - 129 Miles

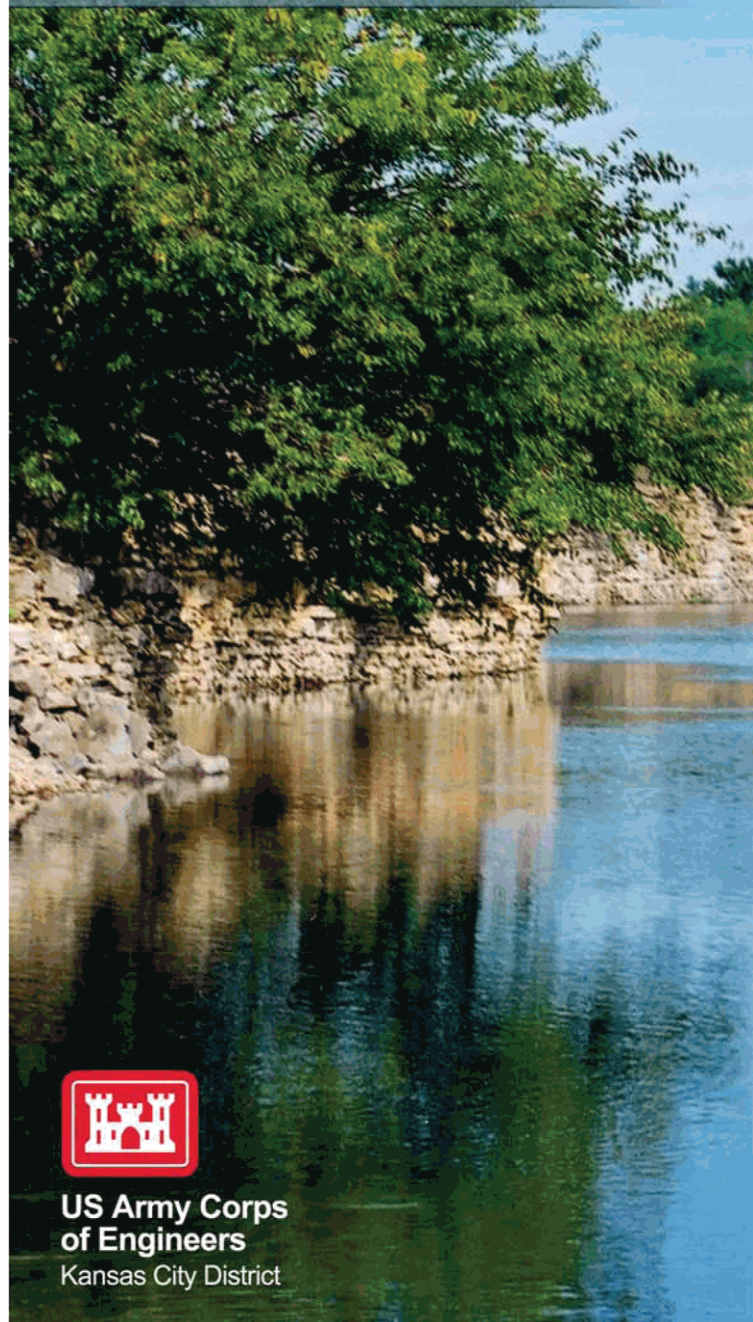
For additional information:

Pomona Project Office
U.S. Army Corps of Engineers
5260 Pomona Dam Road
Vassar, Kansas 66543-9212
Phone: 785-453-2201

visit our web site at:
<http://www.nwk.usace.army.mil>

POMONA LAKE

KANSAS



US Army Corps
of Engineers
Kansas City District

Welcome

The U.S. Army Corps of Engineers welcomes you to Pomona Lake. We hope that you will make full use of the many recreational facilities and opportunities that are available.

If you need additional information or have questions, Corps personnel at the Project Information Center will be happy to assist you.

Remember to be extra careful when boating and swimming. Pomona Lake has numerous underwater hazards. Most drownings involve alcohol use and often occur to people that never expected to be in the water. Don't become an accident statistic

“Wear A Life Jacket!”

Have a safe and enjoyable visit!

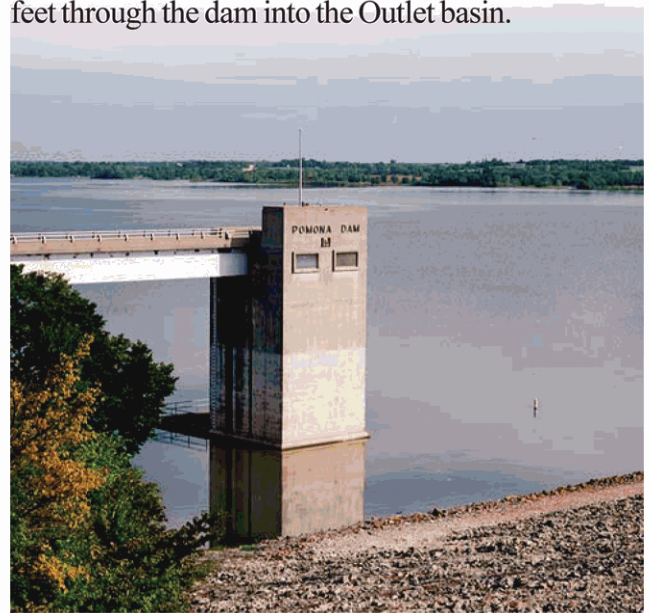


Pomona Dam

Construction of the dam took approximately four years and was completed in 1963 at a cost of \$13 million dollars. To date the flood protection savings have exceeded \$152 million dollars.

The dam is a rolled earthfill embankment, which extends 7,750 feet and stands 111 feet above the streambed. The center of the dam is constructed of impervious clay fill, making this dam virtually watertight.

Water entering the lake is released through a series of hydraulically operated 6 1/2' x 14' gates which are located in the bottom of the control tower. Water then flows through a 13-foot conduit approximately 720 feet through the dam into the Outlet basin.



Pomona Lake controls watershed runoff from over a 322 square mile area. Controlled releases are made into 110-Mile Creek, which flows into the Marais des Cygnes, Osage and Missouri Rivers. This lake is operated in conjunction with other U.S. Army Corps of Engineers projects, which Congress authorized to be built for flood control in the Missouri and Mississippi River basins.



Hunting and Fishing

Hunters can find a variety of game, including rabbit, dove, quail, deer, turkey and waterfowl on Corps managed project lands and water. Hunting is permitted on approximately 4,500 acres of land surrounding the lake. Hunting is not permitted in park areas and several locations have some restrictions in effect.

The Kansas Department of Wildlife and Parks, in cooperation with the Corps of Engineers performs a variety of fisheries management activities to improve fishing. Fish feeders and brush attractors have been placed in the lake to recruit fish to easily fished locations and to improve the lake's aquatic habitat. Crappie, channel and flathead catfish, wiper, white bass and walleye are favorites with Pomona anglers. Current and past Kansas fishing records have come from Pomona waters, including wiper and flathead catfish.



Recreation

A variety of recreational opportunities and facilities are available at Pomona Lake. There are six Corps managed parks and Pomona State Park where camping is permitted. Michigan Valley, Outlet, Wolf Creek & Carbolyn Parks have numerous campsites, shade trees, electrical and water hookups, showers, picnic sites, playground equipment and sanitary dump stations. 110-Mile and Cedar Parks offer a more primitive camping experience.

Marina concessions are available in Michigan Valley Park and Pomona State Park. They offer boating, fishing and camping supplies and services. Boat ramps are available at all parks. Swimming beaches are located at Michigan Valley Park and Pomona State Park. Accessible fishing docks are located in Michigan Valley Park. Nature trails are located in Outlet and 110-Mile Parks. A legend indicating what facilities are available is located on the map side of this brochure.



For the outdoor enthusiast, bird watcher and hunter, several hundred acres of managed wetlands have been developed around the lake. These wetlands are managed to provide high quality feeding and resting areas for migratory birds. These wetlands are managed as moist-soil units where water levels are allowed to rise in the spring and fall to coincide with the seasonal migrations of numerous species of shore birds and waterfowl.



Making Reservations

To make reservations at Pomona Lake, call toll free or visit the internet and explore campground information nation wide. Reservations for campsites may be made up to 240 days in advance. Group facilities including picnic shelters and group camps can be reserved up to 360 days in advance. Facilities available for reservation at Pomona Lake include family campsites located in Outlet, Michigan Valley, Wolf Creek and Carbolyn Parks, two group camping areas, and five picnic shelters.



**Reserve
Your Place
Under the
Stars**
National
Recreation
Reservation
Service

**Call toll free
877-444-6777
TDD 877-833-6777**

**Or visit the Internet at:
www.ReserveUSA.com**

Rules and Regulations

The Corps of Engineers has established rules and regulations that are designed to protect and manage the natural and cultural resources of the lake. All visitors are required to observe these rules to insure everyone has a safe and enjoyable visit. These regulations are posted on bulletin boards and are available at the Project Information Center.

Golden Age & Access Passports

Persons 62 years of age or older may obtain a Golden Age Passport for a one-time fee. A Golden Access Passport may be issued to persons who are blind or permanently disabled. Both passports entitle the holder to a 50 percent discount on any Federal use fees. Additional information about Passports may be obtained at the Project Information Center.

Basic Water Safety Tips

- Learn to swim
- Water & drugs or alcohol don't mix
- Wear an approved life jacket (PFD)
- Swim in designated areas
- Never swim alone
- Be watchful of underwater hazards, floating debris shallow areas and boaters
- Check the weather forecast and be alert to changing conditions
- Observe all boating laws and regulations and make sure your boat is equipped with the proper safety equipment
- Never dive into unknown waters
- Be alert to changing lake level conditions
- Learn what lake navigation markers mean