

Table XX-1a
 CANCER OF THE ORAL CAVITY AND PHARYNX (Invasive)

TRENDS IN SEER INCIDENCE^a AND U.S. MORTALITY^b USING THE JOINPOINT REGRESSION PROGRAM, 1975-2004
 WITH UP TO THREE JOINPOINTS BY RACE AND SEX

		Joinpoint Segment 1		Joinpoint Segment 2		Joinpoint Segment 3		Joinpoint Segment 4	
		Year	APC	Year	APC	Year	APC	Year	APC
<u>SEER Cancer Incidence^a</u>									
All Races	Male and Female	1975-1981	0.8	1981-2004	-1.2*				
All Races	Male	1975-1983	-0.1	1983-2004	-1.5*				
All Races	Female	1975-1980	2.7*	1980-2004	-1.0*				
White	Male and Female	1975-1982	0.1	1982-2004	-1.1*				
White	Male	1975-2004	-1.2*						
White	Female	1975-1981	2.2	1981-2004	-1.0*				
Black	Male and Female	1975-1984	2.4*	1984-2004	-2.6*				
Black	Male	1975-1987	1.9*	1987-2004	-3.3*				
Black	Female	1975-2004	-1.4*						
<u>SEER Delay-Adjusted Incidence^a</u>									
All Races	Male and Female	1975-1981	0.7	1981-2004	-1.1*				
All Races	Male	1975-1983	-0.2	1983-2004	-1.4*				
All Races	Female	1975-1980	2.6*	1980-2004	-1.0*				
White	Male and Female	1975-2004	-0.8*						
White	Male	1975-2004	-1.1*						
White	Female	1975-1981	2.1	1981-2004	-0.9*				
Black	Male and Female	1975-1984	2.4*	1984-2004	-2.5*				
Black	Male	1975-1987	1.9*	1987-2004	-3.2*				
Black	Female	1975-2004	-1.3*						
<u>U.S. Cancer Mortality^b</u>									
All Races	Male and Female	1975-1979	-0.5	1979-1993	-1.7*	1993-2000	-2.7*	2000-2004	-1.1
All Races	Male	1975-1980	-0.8	1980-2004	-2.2*				
All Races	Female	1975-1990	-0.9*	1990-2004	-2.4*				
White	Male and Female	1975-2004	-1.9*						
White	Male	1975-2004	-2.2*						
White	Female	1975-1990	-1.0*	1990-2004	-2.3*				
Black	Male and Female	1975-1980	3.1*	1980-1993	-1.4*	1993-2002	-4.5*	2002-2004	1.6
Black	Male	1975-1980	3.7*	1980-1993	-1.4*	1993-2002	-4.7*	2002-2004	4.0
Black	Female	1975-1994	-0.6*	1994-2004	-4.4*				

Joinpoint Regression Program Version 3.0, April 2005, National Cancer Institute. (<http://srab.cancer.gov/joinpoint/>).

The APC is the Annual Percent Change based on rates age-adjusted to the 2000 US Std Population (19 age groups - Census P25-1130).

^a Trends are from the SEER 9 areas (San Francisco, Connecticut, Detroit, Hawaii, Iowa, New Mexico, Seattle, Utah, and Atlanta).

^b Trends are from the NCHS public use data file for the total US.

* The APC is significantly different from zero (p<.05).

Table XX-1b
 CANCER OF THE ORAL CAVITY AND PHARYNX FOR SELECTED SUBSITES (Invasive)

TRENDS IN SEER INCIDENCE^a USING THE JOINPOINT REGRESSION PROGRAM, 1975-2004
 WITH UP TO THREE JOINPOINTS BY RACE AND SEX

		Joinpoint Segment 1		Joinpoint Segment 2		Joinpoint Segment 3		Joinpoint Segment 4	
		Year	APC	Year	APC	Year	APC	Year	APC
<u>Tongue Cancer</u>									
All Races	Male and Female	1975-1981	2.6	1981-1999	0.0	1999-2004	3.3*		
All Races	Male	1975-2000	0.3	2000-2004	4.2				
All Races	Female	1975-1979	6.6	1979-2004	0.0				
White	Male	1975-2000	0.5*	2000-2004	5.7*				
White	Female	1975-2004	0.4*						
Black	Male	1975-1990	1.2	1990-2004	-3.5*				
Black	Female	1975-2004	-1.3*						
<u>Floor of Mouth, Gum and Other Mouth Cancer</u>									
All Races	Male and Female	1975-1983	0.9	1983-2004	-2.5*				
All Races	Male	1975-1984	0.3	1984-2004	-3.0*				
All Races	Female	1975-1987	0.1	1987-2004	-2.2*				
White	Male	1975-1984	-0.1	1984-2004	-2.8*				
White	Female	1975-1986	0.7	1986-2004	-2.2*				
Black	Male	1975-1977	54.6*	1977-1998	-2.4*	1998-2004	-8.9*		
Black	Female	1975-2004	-1.5*						
<u>Oropharynx and Tonsil Cancer</u>									
All Races	Male and Female	1975-2004	0.2						
All Races	Male	1975-2004	0.7*						
All Races	Female	1975-2004	-1.5*						
White	Male	1975-1986	-0.8	1986-2004	1.6*				
White	Female	1975-2004	-1.2*						
Black	Male	1975-2004	-0.5						
Black	Female	1975-2004	-2.0*						
<u>Salivary Gland Cancer</u>									
All Races	Male and Female	1975-2004	0.4*						
All Races	Male	1975-2004	0.5*						
All Races	Female	1975-2004	0.3						
White	Male	1975-2004	0.5*						
White	Female	1975-2004	0.3						
Black	Male	1975-2004	1.3						
Black	Female	1975-2004	0.2						
<u>Lip Cancer</u>									
All Races	Male and Female	1975-2004	-3.5*						
All Races	Male	1975-1996	-3.7*	1996-2004	-6.2*				
All Races	Female	1975-2004	-0.4						
White	Male	1975-1996	-3.5*	1996-2004	-6.3*				
White	Female	1975-2004	-0.3						
Black	Male	-	-						
Black	Female	-	-						

Joinpoint Regression Program Version 3.0, April 2005, National Cancer Institute. (<http://srab.cancer.gov/joinpoint/>).
 The APC is the Annual Percent Change based on rates age-adjusted to the 2000 US Std Population (19 age groups - Census P25-1130).

^a Trends are from the SEER 9 areas (San Francisco, Connecticut, Detroit, Hawaii, Iowa, New Mexico, Seattle, Utah, and Atlanta).

* The APC is significantly different from zero (p<.05).

- Trend could not be calculated. At least one diagnosis year had a zero case count.

Table XX-2
CANCER OF THE ORAL CAVITY AND PHARYNX (Invasive)

AGE ADJUSTED SEER INCIDENCE^a RATES BY YEAR, RACE AND SEX

	<u>All Races</u>			<u>Whites</u>			<u>Blacks</u>		
	<u>Total</u>	<u>Males</u>	<u>Females</u>	<u>Total</u>	<u>Males</u>	<u>Females</u>	<u>Total</u>	<u>Males</u>	<u>Females</u>
<u>AGE-ADJUSTED RATES</u>									
<u>YEAR OF DIAGNOSIS:</u>									
1975	13.2	21.2	7.1	13.3	21.7	6.9	13.4	20.2	8.2
1976	13.3	21.0	7.4	13.2	21.0	7.4	15.2	23.8	8.4
1977	12.7	20.1	7.0	12.6	19.9	7.0	14.4	23.9	6.6
1978	13.4	20.9	7.7	13.2	20.8	7.6	15.8	26.0	8.1
1979	14.0	22.0	8.0	13.7	21.6	7.7	18.4	28.2	10.6
1980	13.3	20.3	7.9	13.0	20.0	7.6	16.8	25.4	9.6
1981	13.6	20.8	7.9	13.4	20.5	7.9	16.7	28.2	7.5
1982	13.3	20.3	7.9	13.1	19.9	7.9	17.1	27.4	8.9
1983	13.3	21.2	7.2	13.3	21.2	7.3	16.1	26.1	8.3
1984	13.5	20.8	7.9	13.0	20.1	7.6	18.9	30.0	10.1
1985	13.3	19.8	8.2	13.3	19.6	8.3	16.0	25.7	8.5
1986	12.5	19.1	7.2	12.3	18.9	7.3	16.2	28.1	7.0
1987	13.2	20.5	7.5	13.1	20.2	7.7	16.8	30.0	7.0
1988	12.1	18.1	7.3	11.8	17.7	7.1	16.4	25.6	9.1
1989	12.1	18.3	7.3	11.8	17.7	7.3	15.7	27.2	7.0
1990	12.6	19.4	7.3	12.4	18.8	7.4	16.0	27.8	6.9
1991	12.2	18.3	7.2	12.1	18.1	7.3	14.4	23.7	7.3
1992	12.0	18.3	6.9	11.8	18.0	6.9	14.8	25.1	6.9
1993	12.4	18.7	7.3	12.2	18.4	7.2	15.5	24.9	8.1
1994	11.7	17.7	6.8	11.4	16.8	6.9	15.7	26.8	7.1
1995	11.5	16.9	7.2	11.5	16.7	7.3	13.5	22.5	6.7
1996	11.7	17.7	7.0	11.4	17.1	6.9	14.9	24.3	7.5
1997	11.5	17.3	6.8	11.5	17.1	6.9	11.4	18.2	6.2
1998	11.2	16.6	6.7	11.2	16.4	6.9	13.0	22.4	6.2
1999	10.5	15.5	6.4	10.4	15.4	6.3	11.6	19.5	5.8
2000	10.7	16.0	6.3	10.7	15.6	6.4	11.6	20.6	4.8
2001	10.7	15.3	6.9	10.8	15.4	6.9	11.9	18.8	6.9
2002	11.0	16.1	6.6	11.2	16.3	6.7	11.0	16.8	6.5
2003	10.3	15.3	6.1	10.3	15.3	5.9	11.4	16.3	7.6
2004	10.4	15.5	6.0	10.6	15.7	6.0	9.9	15.7	5.6
1975-2004	12.1	18.3	7.1	12.0	18.2	7.1	14.2	23.1	7.2

^a SEER 9 areas (San Francisco, Connecticut, Detroit, Hawaii, Iowa, New Mexico, Seattle, Utah, and Atlanta). Rates are per 100,000 and are age-adjusted to the 2000 US Std Population (19 age groups - Census P25-1130).
 - Statistic not shown. Rate based on less than 16 cases for the time interval.

Table XX-3
CANCER OF THE ORAL CAVITY AND PHARYNX (Invasive)
 AGE-ADJUSTED U.S. DEATH^a RATES BY YEAR, RACE AND SEX

	<u>All Races</u>			<u>Whites</u>			<u>Blacks</u>		
	<u>Total</u>	<u>Males</u>	<u>Females</u>	<u>Total</u>	<u>Males</u>	<u>Females</u>	<u>Total</u>	<u>Males</u>	<u>Females</u>
<u>AGE-ADJUSTED RATES</u>									
<u>YEAR OF DEATH:</u>									
1975	4.3	6.9	2.3	4.1	6.6	2.3	5.8	9.9	2.5
1976	4.2	6.9	2.2	4.0	6.6	2.2	6.1	10.6	2.6
1977	4.3	7.0	2.3	4.1	6.7	2.2	6.2	10.9	2.6
1978	4.2	6.8	2.3	4.0	6.4	2.2	6.1	10.7	2.7
1979	4.2	6.7	2.4	4.0	6.3	2.3	6.6	11.5	3.0
1980	4.2	6.7	2.3	3.9	6.1	2.2	7.0	12.5	2.8
1981	4.1	6.5	2.2	3.8	6.0	2.2	6.5	11.4	2.8
1982	4.0	6.5	2.2	3.7	6.0	2.1	6.6	11.5	2.9
1983	3.9	6.3	2.2	3.6	5.7	2.1	6.6	11.8	2.8
1984	3.9	6.2	2.2	3.6	5.6	2.1	6.4	11.7	2.4
1985	3.8	5.9	2.1	3.5	5.4	2.0	6.2	11.0	2.6
1986	3.7	5.8	2.2	3.4	5.3	2.1	6.5	11.4	2.9
1987	3.5	5.5	2.1	3.3	5.0	2.0	5.7	10.0	2.5
1988	3.6	5.6	2.0	3.3	5.1	2.0	6.0	10.7	2.5
1989	3.5	5.3	2.1	3.2	4.8	2.0	5.9	10.4	2.6
1990	3.6	5.6	2.0	3.3	5.1	2.0	6.1	11.0	2.5
1991	3.5	5.3	2.0	3.2	4.9	2.0	5.8	10.1	2.7
1992	3.3	5.1	1.9	3.1	4.7	1.9	5.6	10.0	2.3
1993	3.3	5.2	1.9	3.1	4.7	1.8	5.7	10.1	2.4
1994	3.2	4.8	1.8	2.9	4.4	1.8	5.3	9.3	2.4
1995	3.2	4.9	1.8	2.9	4.4	1.8	5.4	9.3	2.5
1996	3.0	4.6	1.8	2.8	4.2	1.7	4.9	8.7	2.1
1997	3.0	4.5	1.8	2.8	4.2	1.7	4.7	8.1	2.2
1998	3.0	4.5	1.7	2.8	4.2	1.7	4.5	7.9	2.1
1999	2.7	4.1	1.6	2.5	3.8	1.5	4.4	7.5	2.1
2000	2.7	4.1	1.6	2.5	3.7	1.6	4.1	7.3	1.8
2001	2.7	4.1	1.6	2.6	3.9	1.5	3.9	6.7	1.8
2002	2.7	4.1	1.5	2.6	3.9	1.5	3.7	6.3	1.7
2003	2.6	4.1	1.5	2.5	3.8	1.4	3.9	6.9	1.6
2004	2.6	4.0	1.5	2.5	3.7	1.5	3.8	6.9	1.6
1975-2004	3.4	5.3	1.9	3.2	4.9	1.9	5.3	9.4	2.3

^a NCHS public use data file for the total US. Rates are per 100,000 and are age-adjusted to the 2000 US Std Population (19 age groups - Census P25-1130).

- Statistic not shown. Rate based on less than 16 cases for the time interval.

Table XX-4a
CANCER OF THE ORAL CAVITY AND PHARYNX (Invasive)SEER INCIDENCE^a AND U.S. DEATH^b RATES, AGE-ADJUSTED AND AGE-SPECIFIC RATES, BY RACE AND SEX

	All Races			Whites			Blacks		
	Total	Males	Females	Total	Males	Females	Total	Males	Females
<u>SEER INCIDENCE</u>									
<u>AGE AT DIAGNOSIS</u>									
AGE-ADJUSTED RATES, 2000-2004									
All ages	10.5	15.6	6.1	10.6	15.7	6.1	11.1	18.1	5.7
Under 65	6.3	9.4	3.3	6.2	9.3	3.2	7.5	12.0	3.7
65 and over	39.5	58.9	25.4	40.7	60.4	26.3	35.6	60.4	19.2
All ages(IARC world std) ^c	7.5	11.2	4.2	7.5	11.2	4.2	8.3	13.5	4.1
AGE-SPECIFIC RATES, 2000-2004									
<1	-	-	-	-	-	-	-	-	-
1-4	-	-	-	-	-	-	-	-	-
5-9	0.1	0.1	-	0.1	-	-	-	-	-
10-14	0.2	0.2	0.2	0.2	0.1	0.2	-	-	-
15-19	0.4	0.4	0.3	0.3	0.4	0.3	0.6	-	-
20-24	0.6	0.6	0.6	0.6	0.5	0.6	0.6	-	-
25-29	1.0	1.0	1.0	0.9	0.9	0.9	1.0	-	1.0
30-34	1.7	1.8	1.5	1.5	1.7	1.3	1.6	2.0	1.3
35-39	2.9	3.7	2.1	2.7	3.4	1.9	3.1	3.7	2.6
40-44	6.0	8.5	3.5	5.9	8.4	3.3	6.2	8.6	4.0
45-49	11.8	17.8	5.9	11.4	17.3	5.4	15.7	23.5	8.8
50-54	18.7	29.0	8.8	18.5	28.7	8.4	24.0	38.6	11.7
55-59	25.2	39.6	11.7	25.3	39.4	11.7	30.9	54.7	11.1
60-64	31.9	48.6	16.6	32.4	48.9	16.9	35.6	61.0	15.2
65-69	36.6	56.4	19.7	37.4	57.3	20.1	38.5	65.8	17.7
70-74	40.7	60.3	25.0	42.3	61.9	26.5	38.9	69.5	17.6
75-79	41.2	60.1	27.9	42.6	61.8	29.0	36.2	59.9	21.6
80-84	40.9	59.3	29.5	41.8	60.7	30.0	34.3	57.3	21.7
85+	38.9	59.1	29.7	40.2	61.9	30.5	23.4	34.5	18.9
<u>U.S. MORTALITY</u>									
<u>AGE AT DEATH</u>									
AGE-ADJUSTED RATES, 2000-2004									
All ages	2.7	4.1	1.5	2.5	3.8	1.5	3.9	6.8	1.7
Under 65	1.2	2.0	0.6	1.1	1.7	0.5	2.3	4.1	0.9
65 and over	12.5	18.5	8.2	12.4	18.0	8.4	14.4	25.7	7.4
All ages(IARC world std) ^c	1.8	2.7	0.9	1.6	2.5	0.9	2.8	4.9	1.1
AGE-SPECIFIC RATES, 2000-2004									
<1	-	-	-	-	-	-	-	-	-
1-4	-	-	-	-	-	-	-	-	-
5-9	-	-	-	-	-	-	-	-	-
10-14	0.0	-	-	-	-	-	-	-	-
15-19	0.1	0.1	0.0	0.0	0.0	-	-	-	-
20-24	0.1	0.1	0.1	0.1	0.1	0.1	0.1	-	-
25-29	0.1	0.1	0.1	0.1	0.1	0.1	0.1	-	-
30-34	0.2	0.2	0.1	0.1	0.2	0.1	0.2	0.4	-
35-39	0.3	0.4	0.3	0.3	0.4	0.2	0.7	0.8	0.6
40-44	0.9	1.3	0.5	0.7	1.1	0.4	1.7	2.5	1.0
45-49	2.0	3.2	0.9	1.7	2.7	0.8	4.2	7.0	1.8
50-54	3.6	6.0	1.4	3.2	5.2	1.3	7.1	12.9	2.3
55-59	5.6	9.3	2.2	5.1	8.4	2.0	10.5	19.0	3.5
60-64	7.9	12.6	3.6	7.3	11.4	3.5	14.1	26.1	4.7
65-69	9.5	14.7	5.0	9.0	13.7	4.9	14.5	26.1	6.0
70-74	11.4	17.1	6.8	11.2	16.4	7.0	14.7	27.4	6.1
75-79	12.9	19.1	8.6	12.9	18.7	8.7	13.9	24.4	7.6
80-84	14.3	20.8	10.4	14.4	20.6	10.6	14.7	25.7	9.0
85+	18.6	26.3	15.3	19.0	26.6	15.7	14.4	23.3	10.9

^a SEER 17 areas. Rates are per 100,000 and are age-adjusted to the 2000 US Std Population (19 age groups - Census P25-1130), unless noted.

^b NCHS public use data file for the total US. Rates are per 100,000 and are age-adjusted to the 2000 US Std Population (19 age groups - Census P25-1130), unless noted.

^c Rates are per 100,000 and are age-adjusted to the IARC world standard population.

- Statistic not shown. Rate based on less than 16 cases for the time interval.

Table XX-4b
CANCER OF THE ORAL CAVITY AND PHARYNX BY SUBSITE (Invasive)

SEER INCIDENCE^a STAGE DISTRIBUTION BY SITE,
AGE-ADJUSTED SEER INCIDENCE^a AND U.S. DEATH^b RATES BY AGE, RACE AND SEX

	Site									
	Oral Cavity & Pharynx	Lip	Tongue	Floor of Mouth	Gum & Other Mouth	Oropharynx & Tonsil	Hypophar.	Salivary Gland	Nasophar.	Other Oral Cavity & Pharynx
<u>SEER INCIDENCE</u>										
<u>STAGE DISTRIBUTION</u>										
Percent of Total ^c										
Localized	34	79	37	41	39	13	13	47	10	16
Regional	50	14	47	50	47	71	66	35	74	50
Distant	10	2	11	4	5	12	18	13	11	11
Unstaged	6	6	5	5	9	5	4	6	6	23
<u>AGE-ADJUSTED RATES, 2000-2004</u>										
<u>AGE AT DIAGNOSIS</u>										
All ages	10.5	0.9	2.7	0.7	1.6	1.8	0.7	1.2	0.7	0.2
Under 65	6.3	0.4	1.8	0.4	0.7	1.4	0.4	0.6	0.5	0.1
65+	39.5	4.3	9.6	2.7	7.3	4.7	3.3	4.9	1.7	1.0
All ages(IARC world std) ^d	7.5	0.5	2.0	0.5	1.0	1.4	0.5	0.8	0.5	0.2
<u>SEX</u>										
Male	15.6	1.5	4.1	1.0	1.9	3.0	1.3	1.6	1.0	0.4
Female	6.1	0.4	1.6	0.4	1.3	0.7	0.3	0.9	0.4	0.1
<u>RACE</u>										
White	10.6	1.0	2.9	0.7	1.6	1.8	0.7	1.2	0.4	0.2
Black	11.1	0.1	2.5	0.9	1.9	2.3	1.3	1.0	0.7	0.5
Other	8.8	0.4	1.9	0.4	1.2	0.8	0.4	1.0	2.6	0.1
<u>U.S. MORTALITY</u>										
<u>AGE-ADJUSTED RATES, 2000-2004</u>										
<u>AGE AT DEATH</u>										
All ages	2.7	0.0	0.6	0.0	0.4	0.4	0.1	0.2	0.2	0.6
Under 65	1.2	0.0	0.3	0.0	0.1	0.2	0.1	0.1	0.1	0.2
65+	12.5	0.1	2.8	0.2	2.3	1.7	0.5	1.3	0.8	2.7
All ages(IARC world std) ^d	1.8	0.0	0.4	0.0	0.2	0.3	0.1	0.1	0.2	0.4
<u>SEX</u>										
Male	4.1	0.0	0.9	0.1	0.5	0.7	0.2	0.4	0.3	0.9
Female	1.5	0.0	0.4	0.0	0.3	0.2	0.0	0.2	0.1	0.3
<u>RACE</u>										
White	2.5	0.0	0.6	0.0	0.4	0.4	0.1	0.2	0.2	0.5
Black	3.9	-	0.7	0.1	0.5	0.7	0.2	0.2	0.3	1.1
Other	2.2	-	0.4	-	0.2	0.2	0.1	0.1	0.9	0.3

^a SEER 17 areas. Rates are per 100,000 and are age-adjusted to the 2000 US Std Population (19 age groups - Census P25-1130), unless noted.

^b NCHS public use data file for the total US. Rates are per 100,000 and are age-adjusted to the 2000 US Std Population (19 age groups - Census P25-1130), unless noted.

^c Percents may not sum to 100 due to rounding.

^d Rates are per 100,000 and are age-adjusted to the IARC world standard population.

- Statistic not shown. Rate based on less than 16 cases for the time interval.

Table XX-5a
 CANCER OF THE ORAL CAVITY AND PHARYNX (Invasive)

SURVIVAL RATES, BY RACE, SEX, DIAGNOSIS YEAR, STAGE AND AGE

	All Races			Whites			Blacks		
	Total	Males	Females	Total	Males	Females	Total	Males	Females
<u>5-YR RELATIVE SURVIVAL RATES</u>									
YEAR OF DIAGNOSIS:									
1960-1963 ^a	-	-	-	45	-	-	-	-	-
1970-1973 ^a	-	-	-	43	-	-	-	-	-
1975-1977 ^b	53.1	51.9	55.8	54.6	54.1	55.8	36.4	30.0	48.9
1978-1980 ^b	54.0	52.3	57.4	56.1	55.1	58.2	35.1	29.9	46.2
1981-1983 ^b	52.6	51.1	56.0	55.0	53.8	57.5	31.8	26.4	45.7
1984-1986 ^b	54.6	52.0	59.8	56.8	55.1	60.1	35.7	29.8	50.3
1987-1989 ^b	54.2	51.4	60.0	56.6	54.4	61.1	34.4	30.1	44.8
1990-1992 ^b	56.2	53.8	61.2	58.7	57.0	62.2	33.3	28.3	46.8
1993-1995 ^b	58.4	56.7	61.9	60.9	59.9	62.7	38.2	32.8	51.8
1996-2003 ^b	60.0 ^e	58.3 ^e	63.4 ^e	62.0 ^e	61.2 ^e	63.6 ^e	40.6	35.0	54.0
<u>5-YR PERIOD SURVIVAL RATES^{cd}</u>									
YEAR OF DIAGNOSIS:									
1996-2003	59.1	57.9	61.8	61.1	60.7	61.9	40.7	36.1	51.6
<u>STAGE DISTRIBUTION (%) 1996-2003^c</u>									
All Stages									
Number of cases	36,378	24,908	11,470	29,258	20,088	9,170	3,700	2,618	1,082
Percent	100%	100%	100%	100%	100%	100%	100%	100%	100%
Localized	33	30	40	35	32	42	20	17	29
Regional	52	55	45	50	53	44	59	62	54
Distant	10	10	8	9	10	8	15	17	12
Unstaged	5	5	6	5	5	6	5	5	5
<u>5-YR RELATIVE SURVIVAL RATES, 1996-2003^c</u>									
AGE AT DIAGNOSIS:									
<45	76.2	72.2	83.6	79.1	75.9	85.2	60.1	53.5	70.0
45-54	63.2	61.6	68.1	67.2	66.2	70.7	38.2	35.4	46.6
55-64	57.8	55.8	63.6	60.2	58.2	65.7	36.4	34.1	44.2
65-74	53.8	52.1	57.0	55.6	54.8	57.1	31.3	25.3	44.3
75+	46.6	45.9	47.2	47.5	47.4	47.6	34.7	25.1 ^f	45.7 ^f
Under 65	63.9	61.3	70.8	66.6	64.5	72.3	42.5	38.3	53.5
65 and over	51.0	50.0	52.6	52.4	52.2	52.7	32.5	25.3	45.7
STAGE:									
All Stages	59.1	57.6	62.6	61.0	60.2	62.8	40.1	35.5	51.3
Localized	81.8	81.0	82.9	82.2	82.2	82.4	72.2	64.3	82.3
Regional	52.1	52.2	52.0	53.9	54.6	51.8	34.5	32.1	41.2
Distant	26.5	25.2	29.9	27.2	25.7	30.9	21.0	21.3	20.8
Unstaged	46.2	45.2	47.9	45.3	45.8	44.0	34.0	28.4 ^f	44.8 ^f

^a Rates are based on End Results data from a series of hospital registries and one population-based registry.

^b Rates are from the SEER 9 areas (San Francisco, Connecticut, Detroit, Hawaii, Iowa, New Mexico, Seattle, Utah, Atlanta).

Rates are based on follow-up of patients into 2004.

^c Rates are from the SEER 17 areas (San Francisco, Connecticut, Detroit, Hawaii, Iowa, New Mexico, Seattle, Utah, Atlanta, San Jose-Monterey, Los Angeles, Alaska Native Registry, Rural Georgia, California excluding SF/SJM/LA, Kentucky, Louisiana and New Jersey). California excluding SF/SJM/LA, Kentucky, Louisiana, and New Jersey contribute cases for diagnosis years 2000-2003. The remaining 13 SEER Areas contribute cases for the entire period 1996-2003. Rates are based on follow-up of patients into 2004.

^d Period survival provides a more up-to-date estimate of survival by piecing together the most recent conditional survival estimates from several cohorts. It is computed here using three calendar year blocks (2001-2003: 0-1 year survival), (2000-2002: 1-2 year survival), (1999-2001: 2-3 year survival), (1998-2000: 3-4 year survival), (1997-1999: 4-5 years survival).

^e The difference in rates between 1975-1977 and 1996-2003 is statistically significant (p<.05).

^f The standard error of the survival rate is between 5 and 10 percentage points.

^g The standard error of the survival rate is greater than 10 percentage points.

- Statistic could not be calculated due to fewer than 16 cases during the time period.

Table XX-5b

CANCER OF THE ORAL CAVITY AND PHARYNX BY SUBSITE (Invasive)

RELATIVE SURVIVAL RATES BY CANCER SITE, 1988-2003

SITE	Number of Cases	Case Distribution (%)	SURVIVAL YEARS					
			1-Year Percent	2-Year Percent	3-Year Percent	5-Year Percent	8-Year Percent	10-Year Percent
Oral Cavity & Pharynx	35309	100	82.9	71.1	64.9	58.0	51.3	47.5
Lip	3779	11	99.7	98.1	96.8	93.8	90.3	87.1
Tongue	7944	22	81.3	67.1	60.3	54.3	47.6	43.6
Gum & Other Mouth	3817	11	90.2	82.5	78.0	73.9	70.6	69.1
Floor of Mouth	5448	15	82.4	71.3	65.9	59.7	51.9	48.3
Oropharynx & Tonsil	2962	8	83.0	69.3	62.1	52.8	43.0	37.9
Hypopharynx	2470	7	83.6	72.4	65.4	56.1	49.0	45.6
Salivary Gland	4994	14	80.2	67.2	59.9	51.0	44.4	40.5
Nasopharynx	2923	8	67.0	48.2	38.7	29.2	21.9	18.3
Other Oral Cavity & Pharynx	972	3	64.3	46.9	39.4	29.9	24.8	22.8

5-YEAR RELATIVE SURVIVAL RATES, 1988-2003

SITE	STAGE					ALL STAGES			
	All Stages	Localized	Regional	Distant	Unstaged	White Male	White Female	Black Male	Black Female
Oral Cavity & Pharynx	58.0	82.1	48.1	24.9	52.5	59.0	62.8	32.1	50.6
Lip	93.8	97.0	80.2	35.3 ^b	89.0	93.5	94.3	-	77.9 ^c
Tongue	54.3	73.6	46.8	25.9	42.3	54.7	59.7	31.0	36.8
Gum & Other Mouth	73.9	94.2	58.6	32.7	56.6	68.5	79.2	63.7	83.9
Floor of Mouth	59.7	80.9	47.7	27.2	54.1	57.6	66.6	36.8	63.2
Oropharynx & Tonsil	52.8	73.3	40.0	18.6	50.6	53.0	59.3	31.7	56.2 ^b
Hypopharynx	56.1	78.5	57.6	30.6	51.7	51.3	49.2	43.3	47.7 ^b
Salivary Gland	51.0	65.3	53.3	28.0	38.5	55.1	51.4	28.5	33.9
Nasopharynx	29.2	50.0	30.4	12.9	28.8	30.2	33.3	20.8	24.2 ^b
Other Oral Cavity & Pharynx	29.9	49.2 ^b	29.5	4.7	32.5 ^b	32.5	30.3	16.9	21.1 ^b

^a Rates are from the SEER 9 areas (San Francisco, Connecticut, Detroit, Hawaii, Iowa, New Mexico, Seattle, Utah, Atlanta). Rates are based on follow-up of patients into 2004.

^b The standard error of the survival rate is between 5 and 10 percentage points.

^c The standard error of the survival rate is greater than 10 percentage points.

Table XX-6a
CANCER OF THE ORAL CAVITY AND PHARYNX (Invasive)

SURVIVAL RATES^a

By Year of Diagnosis

All Races, Males and Females

Year of Diagnosis

	1975- 1979	1980- 1984	1985	1986	1987	1988	1989	1990	1991	1992	1993	1994	1995	1996	1997	1998	1999	2000	2001	2002	2003
Relative Survival Rates (SEER ^b)																					
1-year	80.3	80.2	82.1	80.7	81.2	82.3	80.1	82.1	82.0	80.5	82.1	83.8	83.5	82.1	84.2	81.5	84.2	85.2	83.4	84.1	84.5
2-year	66.4	66.6	68.8	67.4	68.5	67.6	68.3	70.1	69.6	69.4	69.2	72.4	72.1	70.3	71.5	70.5	72.8	73.8	73.5	73.1	
3-year	60.1	60.2	61.4	61.6	62.4	60.2	61.7	63.6	63.2	62.2	63.2	66.7	66.0	64.0	66.5	64.8	66.0	68.9	67.6		
4-year	56.3	56.2	57.9	58.2	59.2	55.4	57.4	60.4	58.6	57.7	59.1	62.4	62.3	60.5	62.8	60.7	62.7	65.1			
5-year	53.4	53.2	55.0	55.4	56.0	52.3	54.2	57.7	55.3	55.4	56.3	59.6	59.4	58.6	59.5	57.9	59.8				
6-year	51.1	50.5	53.2	53.0	53.8	49.3	51.5	55.6	52.7	53.0	54.1	56.9	57.0	56.4	57.2	56.8					
7-year	49.1	48.4	50.6	51.1	51.5	46.4	48.9	53.3	50.5	50.4	51.8	55.8	54.7	54.9	55.8						
8-year	47.0	46.9	49.4	49.3	48.6	44.2	47.4	51.6	49.2	48.4	49.9	52.8	52.7	52.8							
9-year	45.2	45.2	47.6	47.3	47.0	42.5	45.7	48.8	47.7	46.6	47.8	50.4	50.9								
10-year	43.3	43.6	46.4	45.4	45.6	41.1	43.6	47.1	46.0	45.2	46.7	48.4									
11-year	41.5	42.2	45.4	44.3	44.4	39.4	42.7	45.9	43.9	43.1	45.2										
12-year	40.1	40.9	43.7	43.2	43.0	37.9	41.4	45.0	42.0	42.0											
13-year	39.0	39.3	42.3	41.9	41.0	36.8	40.4	43.0	41.4												
14-year	38.0	38.4	40.9	41.1	40.0	36.0	38.6	42.0													
15-year	36.7	36.9	40.1	39.7	39.2	36.0	37.3														
16-year	35.6	35.8	39.6	38.2	38.0	34.6															
17-year	35.0	34.9	39.5	38.2	36.9																
18-year	34.1	34.1	38.7	37.1																	
19-year	33.6	32.7	37.7																		
20-year	32.6	32.3																			

^a Survival rates are relative rates expressed as percents.

^b Rates are from the SEER 9 areas (San Francisco, Connecticut, Detroit, Hawaii, Iowa, New Mexico, Seattle, Utah, and Atlanta).

Table XX-6b
 CANCER OF THE ORAL CAVITY AND PHARYNX FOR SELECTED SUBSITES (Invasive)

SURVIVAL RATES^a

By Year of Diagnosis

All Races, Males and Females

Year of Diagnosis

	1975- 1979	1980- 1984	1985	1986	1987	1988	1989	1990	1991	1992	1993	1994	1995	1996	1997	1998	1999	2000	2001	2002	2003
Relative Survival Rates (SEER ^b)																					
<u>Tongue Cancer</u>																					
1-year	75.4	74.4	80.7	76.7	78.4	77.3	75.9	80.3	82.4	77.3	82.0	82.2	80.4	79.9	82.5	80.1	82.2	85.5	82.2	81.9	85.2
2-year	55.5	58.1	63.8	59.8	61.3	59.4	59.7	64.6	66.9	60.7	65.8	68.8	65.9	67.1	71.3	66.2	68.8	72.1	71.3	69.2	
3-year	48.1	51.4	57.5	56.3	55.4	51.1	54.2	58.5	58.8	51.1	57.6	63.3	59.4	61.2	65.5	59.6	61.0	66.9	64.9		
4-year	44.3	48.1	53.1	52.9	49.8	46.8	50.1	55.8	53.5	47.3	54.7	59.0	57.4	57.5	62.7	56.0	58.9	64.2			
5-year	41.1	45.5	49.8	51.8	46.4	44.4	47.5	52.9	52.8	44.5	52.3	55.2	55.0	55.9	59.0	53.4	56.2				
6-year	39.4	42.6	48.1	48.1	46.0	41.6	44.9	50.7	49.2	43.1	50.5	53.1	51.6	53.7	57.6	52.9					
7-year	38.4	40.1	45.8	46.2	43.9	35.5	43.4	48.0	47.4	41.5	47.8	52.6	49.8	52.6	56.9						
8-year	37.0	38.5	45.1	44.7	42.3	32.4	40.9	45.9	46.7	40.1	45.7	49.1	47.8	51.1							
9-year	35.9	35.8	42.6	43.8	41.2	31.0	38.9	42.8	45.1	36.4	43.4	47.2	46.1								
10-year	34.2	34.4	42.0	42.5	40.1	30.9	37.1	40.9	42.4	34.1	43.1	46.0									
<u>Lip Cancer</u>																					
1-year	99.3	98.2	99.2	99.4	99.9	100.0	97.8	99.0	100.0	100.0	99.3	100.0	99.9	98.2	100.0	99.3	97.4	97.8	94.8	99.6	99.1
2-year	97.5	96.6	97.4	97.1	98.4	97.8	97.5	97.8	98.6	98.5	98.7	100.0	99.5	94.0	96.8	97.9	95.1	96.1	93.7	99.6	
3-year	97.1	94.4	95.0	95.7	98.4	96.3	96.6	96.3	98.6	97.0	98.6	100.0	98.7	92.6	94.6	95.5	93.5	94.9	93.7		
4-year	95.8	93.3	95.0	95.7	98.4	94.9	95.8	96.3	97.8	95.3	98.6	98.0	95.8	91.7	93.0	93.7	91.6	91.7			
5-year	94.4	91.2	95.0	95.2	97.6	93.0	93.9	95.1	96.0	94.5	96.5	97.4	94.7	89.4	90.8	91.3	90.1				
6-year	92.7	89.2	95.0	92.8	96.8	91.3	93.5	93.3	96.0	91.0	95.9	97.0	94.7	88.5	89.3	90.0					
7-year	91.5	88.1	93.8	91.5	95.4	88.6	92.8	92.6	95.8	88.2	94.3	97.0	94.7	88.0	88.4						
8-year	90.4	88.1	93.0	89.1	94.1	86.7	92.8	92.3	95.1	85.9	91.5	95.8	90.8	85.4							
9-year	88.4	87.5	93.0	87.2	93.8	86.7	90.1	89.9	93.0	84.8	90.2	93.9	86.3								
10-year	86.7	86.4	93.0	86.0	93.3	86.7	88.2	89.1	91.0	83.2	88.5	90.8									
<u>Oropharynx and Tonsil Cancer</u>																					
1-year	71.4	72.4	75.3	71.4	71.7	76.2	75.1	76.8	76.8	71.4	77.7	74.5	81.1	80.4	81.8	81.2	87.5	82.8	84.1	85.7	82.9
2-year	54.2	53.4	57.3	52.1	55.3	57.5	61.7	60.5	63.0	58.5	64.9	63.8	70.2	66.7	67.5	66.7	75.4	67.6	72.6	76.4	
3-year	44.8	45.2	46.4	46.0	43.4	44.1	52.2	51.8	57.7	49.9	55.8	57.7	63.0	60.4	62.4	60.1	67.8	62.6	67.0		
4-year	39.4	40.1	44.0	42.5	41.8	37.8	45.5	48.1	53.3	45.0	49.9	53.4	58.9	54.1	57.0	55.1	63.5	57.9			
5-year	36.3	36.2	37.6	39.0	39.1	34.5	43.6	43.4	46.7	41.6	46.4	50.1	54.8	53.1	52.7	53.3	61.0				
6-year	32.9	33.0	34.5	37.4	35.0	32.2	40.1	43.1	41.8	40.6	44.5	47.0	51.4	48.7	49.6	52.3					
7-year	31.1	30.6	31.6	34.3	32.3	30.1	37.5	41.1	40.2	39.7	43.5	46.6	48.1	44.6	48.9						
8-year	27.5	29.1	30.0	32.3	29.3	29.6	37.0	39.7	37.7	38.7	41.6	43.2	47.3	43.5							
9-year	24.8	26.9	27.6	29.9	27.1	29.3	35.9	35.5	35.9	37.0	39.0	42.1	46.2								
10-year	23.6	24.5	24.1	28.8	26.5	25.2	34.6	35.4	34.1	37.0	35.8	41.2									

^a Survival rates are relative rates expressed as percents.^b Rates are from the SEER 9 areas (San Francisco, Connecticut, Detroit, Hawaii, Iowa, New Mexico, Seattle, Utah, and Atlanta).

Table XX-7
CANCER OF THE ORAL CAVITY AND PHARYNX (Invasive)

SURVIVAL RATES^a

By Year of Diagnosis

All Races, Males

Year of Diagnosis

	1975- 1979	1980- 1984	1985	1986	1987	1988	1989	1990	1991	1992	1993	1994	1995	1996	1997	1998	1999	2000	2001	2002	2003
Relative Survival Rates (SEER ^b)																					
1-year	79.7	79.6	82.6	79.2	80.8	81.4	78.7	81.3	81.5	79.8	81.0	84.0	83.5	81.9	83.4	81.1	84.6	85.0	83.9	84.3	84.8
2-year	65.5	65.7	68.5	64.6	67.4	66.3	66.1	68.1	68.8	68.1	67.6	72.5	71.2	69.6	70.0	70.4	71.8	73.1	73.5	71.9	
3-year	59.3	58.8	60.4	57.6	61.0	58.4	58.9	61.7	61.5	60.3	60.9	65.3	65.3	62.7	64.9	64.0	64.4	67.5	67.9		
4-year	54.9	54.7	57.4	54.2	57.5	52.9	53.8	58.3	55.5	56.1	57.1	60.7	61.0	58.9	60.5	59.6	60.7	63.9			
5-year	52.0	51.4	53.9	50.9	54.0	49.4	50.4	55.4	52.1	53.7	54.1	58.1	58.1	57.0	57.0	56.6	58.0				
6-year	49.7	48.8	52.1	49.0	51.7	46.7	48.3	53.2	49.5	51.5	51.6	55.8	55.3	54.2	54.7	55.5					
7-year	47.6	46.7	49.6	47.3	50.1	44.1	45.9	50.7	47.0	48.5	48.8	54.8	52.6	52.1	53.6						
8-year	45.7	45.2	48.8	45.1	46.8	41.0	44.0	49.4	45.7	46.4	47.6	52.0	50.4	50.3							
9-year	43.8	43.5	47.2	43.3	45.3	39.0	41.9	46.6	44.2	44.5	45.5	49.4	48.5								
10-year	41.8	41.7	45.9	41.3	43.8	37.1	39.1	45.6	42.2	43.1	44.6	47.4									
11-year	40.0	40.3	45.1	40.8	41.9	35.2	38.0	44.4	40.4	41.5	43.3										
12-year	38.7	39.1	43.5	39.8	40.3	33.9	36.8	43.6	38.1	40.2											
13-year	37.6	37.7	42.1	38.3	38.6	32.7	36.4	41.6	37.8												
14-year	36.8	36.9	40.3	37.8	37.5	31.4	35.1	40.3													
15-year	35.6	35.4	39.2	36.2	36.5	31.4	34.3														
16-year	34.4	34.3	38.5	35.1	35.5	29.9															
17-year	33.7	33.4	38.2	35.1	34.4																
18-year	33.0	32.3	37.3	34.5																	
19-year	32.5	30.6	36.3																		
20-year	31.7	30.1																			

^a Survival rates are relative rates expressed as percents.

^b Rates are from the SEER 9 areas (San Francisco, Connecticut, Detroit, Hawaii, Iowa, New Mexico, Seattle, Utah, and Atlanta).

Table XX-8
CANCER OF THE ORAL CAVITY AND PHARYNX (Invasive)

SURVIVAL RATES^a

By Year of Diagnosis

All Races, Females

Year of Diagnosis

	1975- 1979	1980- 1984	1985	1986	1987	1988	1989	1990	1991	1992	1993	1994	1995	1996	1997	1998	1999	2000	2001	2002	2003
Relative Survival Rates (SEER ^b)																					
1-year	81.7	81.3	81.2	84.0	82.1	84.2	82.9	83.9	82.9	82.0	84.5	83.5	83.6	82.5	86.2	82.4	83.4	85.8	82.4	83.7	83.8
2-year	68.4	68.4	69.2	73.5	71.0	70.0	72.7	74.6	71.4	72.2	72.5	72.1	73.9	71.7	74.9	70.8	74.9	75.3	73.3	75.8	
3-year	62.1	63.0	63.2	70.0	65.5	63.9	67.2	67.8	66.6	66.3	68.2	69.5	67.4	66.6	70.2	66.4	69.4	71.9	67.0		
4-year	59.3	59.2	58.9	66.8	63.0	60.2	64.4	65.0	64.7	61.1	63.5	66.0	64.8	63.7	68.0	63.3	66.8	67.8			
5-year	56.4	56.7	57.2	64.9	60.3	58.1	61.5	62.5	61.9	59.2	60.6	62.7	61.9	61.7	65.1	60.6	63.2				
6-year	54.0	54.0	55.2	61.5	58.3	54.5	57.5	60.6	59.0	56.2	59.5	59.2	60.2	60.7	62.8	59.6					
7-year	52.2	51.8	52.4	58.9	54.6	50.9	54.8	58.4	57.6	54.6	58.2	57.9	58.5	60.3	60.6						
8-year	49.8	50.5	50.3	58.1	52.5	50.4	53.8	56.1	56.0	52.8	54.6	54.5	56.9	57.9							
9-year	48.2	48.4	48.3	55.4	50.7	49.3	52.9	53.3	54.4	50.8	52.9	52.5	55.4								
10-year	46.4	47.3	47.2	53.5	49.6	49.0	51.8	50.1	53.5	49.5	51.2	50.5									
11-year	44.5	46.0	45.9	51.5	49.5	47.3	51.5	48.9	50.9	46.5	49.3										
12-year	43.0	44.4	44.0	50.2	48.6	45.6	49.8	47.6	49.8	45.3											
13-year	41.6	42.3	42.6	49.3	46.2	44.4	47.9	45.9	48.5												
14-year	40.4	41.4	41.8	47.7	45.4	44.4	45.0	45.1													
15-year	38.9	39.7	41.5	46.3	44.8	44.2	42.7														
16-year	38.0	38.7	41.2	44.7	43.2	43.6															
17-year	37.3	37.9	41.2	43.9	42.0																
18-year	36.2	37.2	40.9	42.2																	
19-year	35.4	36.5	39.9																		
20-year	34.3	36.3																			

^a Survival rates are relative rates expressed as percents.

^b Rates are from the SEER 9 areas (San Francisco, Connecticut, Detroit, Hawaii, Iowa, New Mexico, Seattle, Utah, and Atlanta).

Table XX-9
 CANCER OF THE ORAL CAVITY AND PHARYNX (Invasive)

Risk of Being Diagnosed With Cancer in 10, 20 and 30 Years, Lifetime Risk of Being Diagnosed with Cancer, and
 Lifetime Risk of Dying from Cancer Given Cancer Free At Current Age
 Both Sexes, 2002-2004 By Race/Ethnicity

Race/ Ethnicity	Current Age	Risk of Being Diagnosed with Cancer				Risk of Dying from Cancer	
		+10 yrs Percent (95% C.I.)	+20 yrs Percent (95% C.I.)	+30 yrs Percent (95% C.I.)	Eventually Percent (95% C.I.)	Eventually Percent (95% C.I.)	
All Races	0	0.00 (0.00, 0.00)	0.00 (0.00, 0.00)	0.01 (0.01, 0.01)	1.02 (1.00, 1.03)	0.28 (0.28, 0.29)	
	10	0.00 (0.00, 0.00)	0.01 (0.01, 0.01)	0.04 (0.03, 0.04)	1.03 (1.01, 1.04)	0.29 (0.28, 0.29)	
	20	0.01 (0.01, 0.01)	0.03 (0.03, 0.03)	0.12 (0.12, 0.12)	1.03 (1.01, 1.04)	0.29 (0.28, 0.29)	
	30	0.02 (0.02, 0.03)	0.11 (0.11, 0.11)	0.31 (0.30, 0.31)	1.03 (1.02, 1.04)	0.29 (0.29, 0.29)	
	40	0.09 (0.09, 0.09)	0.29 (0.28, 0.29)	0.56 (0.56, 0.57)	1.02 (1.00, 1.03)	0.29 (0.29, 0.29)	
	50	0.21 (0.20, 0.21)	0.49 (0.48, 0.50)	0.76 (0.75, 0.77)	0.96 (0.94, 0.97)	0.28 (0.28, 0.29)	
	60	0.30 (0.30, 0.31)	0.59 (0.58, 0.60)	0.76 (0.74, 0.77)	0.80 (0.79, 0.82)	0.26 (0.25, 0.26)	
	70	0.33 (0.33, 0.34)	0.52 (0.51, 0.54)	- (- , -)	0.58 (0.56, 0.59)	0.21 (0.20, 0.21)	
80	0.27 (0.26, 0.28)	- (- , -)	- (- , -)	0.35 (0.33, 0.36)	0.15 (0.14, 0.15)		
White	0	0.00 (0.00, 0.00)	0.00 (0.00, 0.00)	0.01 (0.01, 0.01)	1.03 (1.02, 1.05)	0.28 (0.27, 0.28)	
	10	0.00 (0.00, 0.00)	0.01 (0.01, 0.01)	0.03 (0.03, 0.03)	1.04 (1.03, 1.06)	0.28 (0.28, 0.28)	
	20	0.01 (0.01, 0.01)	0.03 (0.03, 0.03)	0.11 (0.11, 0.12)	1.05 (1.03, 1.06)	0.28 (0.28, 0.28)	
	30	0.02 (0.02, 0.02)	0.11 (0.10, 0.11)	0.30 (0.30, 0.31)	1.05 (1.03, 1.06)	0.28 (0.28, 0.29)	
	40	0.09 (0.08, 0.09)	0.29 (0.28, 0.29)	0.57 (0.56, 0.58)	1.04 (1.02, 1.05)	0.28 (0.28, 0.29)	
	50	0.21 (0.20, 0.21)	0.50 (0.49, 0.51)	0.78 (0.77, 0.79)	0.98 (0.96, 0.99)	0.28 (0.27, 0.28)	
	60	0.31 (0.30, 0.32)	0.61 (0.60, 0.62)	0.78 (0.76, 0.79)	0.82 (0.81, 0.84)	0.25 (0.25, 0.26)	
	70	0.35 (0.34, 0.36)	0.54 (0.52, 0.55)	- (- , -)	0.59 (0.58, 0.60)	0.21 (0.20, 0.21)	
80	0.27 (0.26, 0.29)	- (- , -)	- (- , -)	0.35 (0.33, 0.36)	0.15 (0.14, 0.15)		
Black	0	0.00 (0.00, 0.00)	0.01 (0.00, 0.01)	0.01 (0.01, 0.02)	0.89 (0.85, 0.93)	0.33 (0.32, 0.34)	
	10	0.00 (0.00, 0.01)	0.01 (0.01, 0.02)	0.04 (0.03, 0.04)	0.91 (0.87, 0.96)	0.34 (0.32, 0.35)	
	20	0.01 (0.01, 0.01)	0.03 (0.03, 0.04)	0.13 (0.12, 0.14)	0.91 (0.87, 0.96)	0.34 (0.33, 0.35)	
	30	0.02 (0.02, 0.03)	0.13 (0.12, 0.14)	0.36 (0.34, 0.38)	0.92 (0.88, 0.96)	0.34 (0.33, 0.35)	
	40	0.10 (0.10, 0.11)	0.34 (0.32, 0.36)	0.60 (0.57, 0.63)	0.92 (0.87, 0.96)	0.34 (0.33, 0.36)	
	50	0.25 (0.23, 0.27)	0.52 (0.49, 0.55)	0.74 (0.70, 0.78)	0.86 (0.81, 0.90)	0.33 (0.32, 0.34)	
	60	0.31 (0.28, 0.33)	0.55 (0.51, 0.59)	0.65 (0.61, 0.70)	0.68 (0.64, 0.73)	0.28 (0.27, 0.30)	
	70	0.30 (0.28, 0.34)	0.44 (0.40, 0.48)	- (- , -)	0.47 (0.43, 0.51)	0.20 (0.18, 0.21)	
80	0.21 (0.18, 0.25)	- (- , -)	- (- , -)	0.26 (0.22, 0.31)	0.13 (0.12, 0.15)		

Devcan Version 6.2.0, April 2006, National Cancer Institute (<http://srab.cancer.gov/devcan/>).

Source: Incidence data are from the SEER 17 areas (San Francisco, Connecticut, Detroit, Hawaii, Iowa, New Mexico, Seattle, Utah, Atlanta, San Jose-Monterey, Los Angeles, Alaska Native Registry, Rural Georgia, California excluding SF/SJM/LA, Kentucky, Louisiana and New Jersey). Mortality data are from the NCHS public use data file for the total US.

- Statistic could not be calculated.

A percent or confidence interval value of 0.00 represents a value that is below 0.005.

Table XX-9 - continued
 CANCER OF THE ORAL CAVITY AND PHARYNX (Invasive)

Risk of Being Diagnosed With Cancer in 10, 20 and 30 Years, Lifetime Risk of Being Diagnosed with Cancer, and
 Lifetime Risk of Dying from Cancer Given Cancer Free At Current Age
 Both Sexes, 2002-2004 By Race/Ethnicity

Race/ Ethnicity	Current Age	Risk of Being Diagnosed with Cancer				Risk of Dying from Cancer	
		+10 yrs Percent (95% C.I.)	+20 yrs Percent (95% C.I.)	+30 yrs Percent (95% C.I.)	Eventually Percent (95% C.I.)	Eventually Percent (95% C.I.)	
Asian/ Pacific Islander	0	0.00 (0.00, 0.00)	0.00 (0.00, 0.01)	0.02 (0.01, 0.02)	0.88 (0.82, 0.95)	0.32 (0.28, 0.37)	
	10	0.00 (0.00, 0.01)	0.02 (0.01, 0.02)	0.05 (0.05, 0.06)	0.88 (0.83, 0.95)	0.33 (0.29, 0.37)	
	20	0.01 (0.01, 0.02)	0.05 (0.04, 0.06)	0.13 (0.12, 0.14)	0.88 (0.82, 0.95)	0.33 (0.29, 0.37)	
	30	0.04 (0.03, 0.04)	0.12 (0.11, 0.13)	0.26 (0.24, 0.27)	0.87 (0.81, 0.94)	0.33 (0.29, 0.37)	
	40	0.08 (0.07, 0.09)	0.22 (0.20, 0.24)	0.42 (0.39, 0.45)	0.84 (0.78, 0.91)	0.32 (0.29, 0.37)	
	50	0.14 (0.13, 0.15)	0.34 (0.32, 0.37)	0.53 (0.50, 0.57)	0.77 (0.71, 0.84)	0.31 (0.27, 0.36)	
	60	0.21 (0.19, 0.23)	0.41 (0.37, 0.44)	0.58 (0.54, 0.63)	0.65 (0.59, 0.72)	0.29 (0.25, 0.34)	
	70	0.21 (0.19, 0.24)	0.40 (0.36, 0.45)	- (- , -)	0.48 (0.42, 0.55)	0.25 (0.21, 0.31)	
80	0.23 (0.20, 0.28)	- (- , -)	- (- , -)	0.33 (0.27, 0.41)	0.21 (0.16, 0.27)		
American Indian/ Alaska Native ^a	0	0.00 (0.00, 0.02)	0.00 (0.00, 0.02)	0.00 (0.00, 0.02)	0.61 (0.47, 0.91)	0.24 (0.18, 0.34)	
	10	0.00 (0.00, 0.01)	0.00 (0.00, 0.01)	0.01 (0.00, 0.03)	0.62 (0.48, 0.93)	0.25 (0.19, 0.35)	
	20	0.00 (0.00, 0.01)	0.01 (0.00, 0.03)	0.08 (0.05, 0.12)	0.62 (0.48, 0.94)	0.25 (0.19, 0.35)	
	30	0.01 (0.00, 0.03)	0.08 (0.05, 0.12)	0.23 (0.17, 0.31)	0.63 (0.49, 0.95)	0.25 (0.19, 0.36)	
	40	0.07 (0.04, 0.10)	0.23 (0.17, 0.30)	0.44 (0.34, 0.56)	0.64 (0.49, 0.96)	0.26 (0.20, 0.37)	
	50	0.16 (0.11, 0.23)	0.38 (0.29, 0.51)	0.53 (0.40, 0.70)	0.59 (0.44, 0.93)	0.27 (0.20, 0.38)	
	60	0.24 (0.16, 0.35)	0.40 (0.28, 0.56)	0.43 (0.30, 0.62)	0.46 (0.31, 0.82)	0.24 (0.17, 0.36)	
	70	0.19 (0.10, 0.32)	0.22 (0.12, 0.40)	- (- , -)	0.26 (0.14, 0.67)	0.20 (0.13, 0.34)	
80	0.05 (0.01, 0.22)	- (- , -)	- (- , -)	0.10 (0.01, 0.67)	0.12 (0.05, 0.31)		
Hispanic ^b	0	0.00 (0.00, 0.00)	0.00 (0.00, 0.00)	0.01 (0.01, 0.01)	0.68 (0.64, 0.74)	0.22 (0.20, 0.24)	
	10	0.00 (0.00, 0.00)	0.01 (0.00, 0.01)	0.02 (0.02, 0.02)	0.69 (0.64, 0.75)	0.22 (0.20, 0.24)	
	20	0.00 (0.00, 0.01)	0.02 (0.02, 0.02)	0.06 (0.06, 0.07)	0.69 (0.64, 0.75)	0.22 (0.20, 0.24)	
	30	0.01 (0.01, 0.02)	0.06 (0.05, 0.07)	0.16 (0.15, 0.17)	0.69 (0.64, 0.75)	0.22 (0.20, 0.24)	
	40	0.05 (0.04, 0.05)	0.15 (0.14, 0.16)	0.31 (0.29, 0.33)	0.69 (0.64, 0.74)	0.22 (0.20, 0.24)	
	50	0.10 (0.09, 0.11)	0.27 (0.25, 0.29)	0.45 (0.42, 0.49)	0.66 (0.60, 0.71)	0.22 (0.20, 0.24)	
	60	0.17 (0.16, 0.19)	0.37 (0.34, 0.40)	0.50 (0.46, 0.54)	0.58 (0.53, 0.64)	0.21 (0.19, 0.23)	
	70	0.22 (0.19, 0.24)	0.37 (0.33, 0.41)	- (- , -)	0.45 (0.40, 0.52)	0.18 (0.16, 0.20)	
80	0.20 (0.16, 0.23)	- (- , -)	- (- , -)	0.31 (0.25, 0.39)	0.15 (0.12, 0.18)		

Devcan Version 6.2.0, April 2006, National Cancer Institute (<http://srab.cancer.gov/devcan/>).

Source: Incidence data are from the SEER 17 areas (San Francisco, Connecticut, Detroit, Hawaii, Iowa, New Mexico, Seattle, Utah, Atlanta, San Jose-Monterey, Los Angeles, Alaska Native Registry, Rural Georgia, California excluding SF/SJM/LA, Kentucky, Louisiana and New Jersey). Mortality data are from the NCHS public use data file for the total US.

^a Underlying incidence and mortality data for American Indian/Alaska Native are based on the CHSDA (Contract Health Service Delivery Area) counties.

^b Hispanic is not mutually exclusive from whites, blacks, Asian/Pacific Islanders, and American Indians/Alaska Natives. Underlying incidence data for Hispanics are based on NHIA and exclude cases from the Alaska Native Registry and Kentucky. Underlying mortality data for Hispanics exclude deaths from Minnesota, New Hampshire and North Dakota.

- Statistic could not be calculated.

A percent or confidence interval value of 0.00 represents a value that is below 0.005.

Table XX-9 - continued
 CANCER OF THE ORAL CAVITY AND PHARYNX (Invasive)

Risk of Being Diagnosed With Cancer in 10, 20 and 30 Years, Lifetime Risk of Being Diagnosed with Cancer, and
 Lifetime Risk of Dying from Cancer Given Cancer Free At Current Age
 Males, 2002-2004 By Race/Ethnicity

Race/ Ethnicity	Current Age	Risk of Being Diagnosed with Cancer				Risk of Dying from Cancer	
		+10 yrs Percent (95% C.I.)	+20 yrs Percent (95% C.I.)	+30 yrs Percent (95% C.I.)	Eventually Percent (95% C.I.)	Eventually Percent (95% C.I.)	
All Races	0	0.00 (0.00, 0.00)	0.00 (0.00, 0.01)	0.01 (0.01, 0.01)	1.40 (1.38, 1.43)	0.39 (0.38, 0.39)	
	10	0.00 (0.00, 0.00)	0.01 (0.01, 0.01)	0.04 (0.04, 0.04)	1.42 (1.40, 1.45)	0.39 (0.39, 0.40)	
	20	0.01 (0.01, 0.01)	0.04 (0.03, 0.04)	0.16 (0.16, 0.17)	1.43 (1.40, 1.45)	0.39 (0.39, 0.40)	
	30	0.03 (0.03, 0.03)	0.16 (0.15, 0.16)	0.46 (0.45, 0.47)	1.44 (1.41, 1.46)	0.40 (0.39, 0.40)	
	40	0.13 (0.13, 0.14)	0.44 (0.43, 0.45)	0.84 (0.83, 0.86)	1.43 (1.41, 1.46)	0.40 (0.39, 0.41)	
	50	0.32 (0.31, 0.33)	0.74 (0.72, 0.76)	1.12 (1.09, 1.14)	1.35 (1.33, 1.38)	0.39 (0.39, 0.40)	
	60	0.45 (0.44, 0.47)	0.86 (0.84, 0.88)	1.06 (1.04, 1.09)	1.12 (1.09, 1.14)	0.35 (0.34, 0.35)	
	70	0.49 (0.47, 0.50)	0.73 (0.71, 0.75)	- (- , -)	0.79 (0.77, 0.82)	0.27 (0.26, 0.28)	
80	0.38 (0.36, 0.40)	- (- , -)	- (- , -)	0.47 (0.45, 0.50)	0.19 (0.18, 0.20)		
White	0	0.00 (0.00, 0.00)	0.00 (0.00, 0.00)	0.01 (0.01, 0.01)	1.43 (1.40, 1.46)	0.37 (0.36, 0.38)	
	10	0.00 (0.00, 0.00)	0.01 (0.01, 0.01)	0.04 (0.03, 0.04)	1.45 (1.42, 1.47)	0.38 (0.37, 0.38)	
	20	0.01 (0.01, 0.01)	0.03 (0.03, 0.04)	0.16 (0.15, 0.16)	1.45 (1.42, 1.48)	0.38 (0.37, 0.38)	
	30	0.03 (0.02, 0.03)	0.15 (0.15, 0.16)	0.46 (0.44, 0.47)	1.46 (1.43, 1.49)	0.38 (0.37, 0.39)	
	40	0.13 (0.12, 0.13)	0.44 (0.42, 0.45)	0.85 (0.83, 0.87)	1.46 (1.43, 1.49)	0.38 (0.38, 0.39)	
	50	0.32 (0.31, 0.33)	0.75 (0.73, 0.77)	1.13 (1.11, 1.16)	1.38 (1.35, 1.40)	0.38 (0.37, 0.38)	
	60	0.46 (0.45, 0.48)	0.88 (0.86, 0.90)	1.09 (1.06, 1.12)	1.14 (1.11, 1.17)	0.34 (0.33, 0.34)	
	70	0.50 (0.48, 0.52)	0.75 (0.72, 0.77)	- (- , -)	0.81 (0.78, 0.83)	0.27 (0.26, 0.27)	
80	0.39 (0.37, 0.41)	- (- , -)	- (- , -)	0.48 (0.46, 0.51)	0.19 (0.18, 0.20)		
Black	0	0.00 (0.00, 0.00)	0.01 (0.00, 0.01)	0.02 (0.01, 0.02)	1.30 (1.23, 1.37)	0.51 (0.49, 0.53)	
	10	0.01 (0.00, 0.01)	0.02 (0.01, 0.02)	0.05 (0.04, 0.06)	1.33 (1.26, 1.41)	0.52 (0.50, 0.55)	
	20	0.01 (0.01, 0.02)	0.04 (0.03, 0.05)	0.18 (0.16, 0.20)	1.34 (1.26, 1.41)	0.53 (0.51, 0.55)	
	30	0.03 (0.02, 0.04)	0.17 (0.16, 0.19)	0.55 (0.51, 0.59)	1.36 (1.29, 1.44)	0.54 (0.52, 0.56)	
	40	0.15 (0.14, 0.17)	0.54 (0.50, 0.57)	0.94 (0.89, 1.00)	1.37 (1.30, 1.45)	0.55 (0.53, 0.57)	
	50	0.41 (0.38, 0.45)	0.85 (0.79, 0.90)	1.17 (1.10, 1.25)	1.30 (1.23, 1.39)	0.53 (0.51, 0.56)	
	60	0.50 (0.46, 0.55)	0.88 (0.82, 0.96)	1.02 (0.94, 1.10)	1.03 (0.96, 1.12)	0.46 (0.43, 0.48)	
	70	0.51 (0.45, 0.57)	0.69 (0.61, 0.76)	- (- , -)	0.71 (0.63, 0.80)	0.31 (0.29, 0.34)	
80	0.32 (0.26, 0.40)	- (- , -)	- (- , -)	0.37 (0.29, 0.47)	0.21 (0.18, 0.24)		

Devcan Version 6.2.0, April 2006, National Cancer Institute (<http://srab.cancer.gov/devcan/>).

Source: Incidence data are from the SEER 17 areas (San Francisco, Connecticut, Detroit, Hawaii, Iowa, New Mexico, Seattle, Utah, Atlanta, San Jose-Monterey, Los Angeles, Alaska Native Registry, Rural Georgia, California excluding SF/SJM/LA, Kentucky, Louisiana and New Jersey). Mortality data are from the NCHS public use data file for the total US.

- Statistic could not be calculated.

A percent or confidence interval value of 0.00 represents a value that is below 0.005.

Table XX-9 - continued
 CANCER OF THE ORAL CAVITY AND PHARYNX (Invasive)

Risk of Being Diagnosed With Cancer in 10, 20 and 30 Years, Lifetime Risk of Being Diagnosed with Cancer, and
 Lifetime Risk of Dying from Cancer Given Cancer Free At Current Age
 Males, 2002-2004 By Race/Ethnicity

Race/ Ethnicity	Current Age	Risk of Being Diagnosed with Cancer				Risk of Dying from Cancer	
		+10 yrs Percent (95% C.I.)	+20 yrs Percent (95% C.I.)	+30 yrs Percent (95% C.I.)	Eventually Percent (95% C.I.)	Eventually Percent (95% C.I.)	
Asian/ Pacific Islander	0	0.00 (0.00, 0.00)	0.00 (0.00, 0.01)	0.01 (0.01, 0.02)	1.12 (1.03, 1.23)	0.43 (0.37, 0.51)	
	10	0.00 (0.00, 0.01)	0.01 (0.01, 0.02)	0.05 (0.05, 0.07)	1.13 (1.04, 1.25)	0.43 (0.37, 0.51)	
	20	0.01 (0.01, 0.02)	0.05 (0.04, 0.06)	0.17 (0.16, 0.19)	1.14 (1.04, 1.25)	0.43 (0.38, 0.51)	
	30	0.04 (0.03, 0.05)	0.16 (0.15, 0.18)	0.37 (0.34, 0.40)	1.13 (1.04, 1.24)	0.44 (0.38, 0.52)	
	40	0.12 (0.11, 0.14)	0.33 (0.30, 0.36)	0.61 (0.56, 0.66)	1.10 (1.01, 1.21)	0.43 (0.37, 0.52)	
	50	0.21 (0.19, 0.24)	0.49 (0.45, 0.54)	0.76 (0.69, 0.82)	0.99 (0.90, 1.11)	0.42 (0.36, 0.50)	
	60	0.29 (0.26, 0.33)	0.57 (0.51, 0.63)	0.75 (0.68, 0.83)	0.82 (0.73, 0.93)	0.38 (0.32, 0.46)	
	70	0.31 (0.26, 0.36)	0.51 (0.44, 0.59)	- (- , -)	0.58 (0.49, 0.70)	0.33 (0.26, 0.42)	
	80	0.27 (0.21, 0.34)	- (- , -)	- (- , -)	0.37 (0.27, 0.50)	0.25 (0.17, 0.36)	
American Indian/ Alaska Native ^a	0	0.00 (0.00, 0.04)	0.00 (0.00, 0.04)	0.00 (0.00, 0.04)	0.84 (0.59, 1.53)	0.32 (0.22, 0.53)	
	10	0.00 (0.00, 0.02)	0.00 (0.00, 0.02)	0.02 (0.00, 0.05)	0.86 (0.61, 1.56)	0.32 (0.22, 0.54)	
	20	0.00 (0.00, 0.02)	0.02 (0.00, 0.05)	0.10 (0.06, 0.16)	0.87 (0.61, 1.57)	0.33 (0.22, 0.55)	
	30	0.02 (0.00, 0.05)	0.10 (0.06, 0.17)	0.34 (0.24, 0.47)	0.89 (0.63, 1.61)	0.33 (0.23, 0.56)	
	40	0.09 (0.05, 0.15)	0.34 (0.23, 0.47)	0.63 (0.47, 0.85)	0.90 (0.63, 1.65)	0.34 (0.23, 0.58)	
	50	0.26 (0.17, 0.38)	0.58 (0.41, 0.80)	0.76 (0.54, 1.06)	0.86 (0.58, 1.65)	0.36 (0.24, 0.61)	
	60	0.34 (0.21, 0.54)	0.55 (0.35, 0.84)	0.57 (0.36, 0.91)	0.65 (0.39, 1.52)	0.33 (0.21, 0.61)	
	70	0.25 (0.11, 0.49)	0.27 (0.13, 0.59)	- (- , -)	0.37 (0.14, 1.41)	0.28 (0.15, 0.62)	
	80	0.03 (0.00, 0.42)	- (- , -)	- (- , -)	0.19 (0.00, 1.80)	0.21 (0.06, 0.74)	
Hispanic ^b	0	0.00 (0.00, 0.00)	0.00 (0.00, 0.00)	0.01 (0.00, 0.01)	0.97 (0.88, 1.08)	0.32 (0.29, 0.36)	
	10	0.00 (0.00, 0.00)	0.01 (0.00, 0.01)	0.02 (0.02, 0.03)	0.98 (0.90, 1.09)	0.32 (0.29, 0.37)	
	20	0.00 (0.00, 0.01)	0.02 (0.02, 0.03)	0.09 (0.08, 0.10)	0.99 (0.90, 1.10)	0.33 (0.29, 0.37)	
	30	0.02 (0.01, 0.02)	0.08 (0.07, 0.09)	0.24 (0.22, 0.26)	0.99 (0.91, 1.10)	0.33 (0.29, 0.37)	
	40	0.07 (0.06, 0.07)	0.22 (0.20, 0.24)	0.48 (0.44, 0.52)	0.99 (0.90, 1.10)	0.33 (0.30, 0.37)	
	50	0.16 (0.14, 0.18)	0.43 (0.39, 0.47)	0.68 (0.63, 0.74)	0.95 (0.86, 1.07)	0.33 (0.29, 0.37)	
	60	0.28 (0.25, 0.32)	0.56 (0.51, 0.61)	0.72 (0.65, 0.79)	0.84 (0.75, 0.97)	0.31 (0.27, 0.36)	
	70	0.32 (0.27, 0.36)	0.50 (0.44, 0.58)	- (- , -)	0.65 (0.55, 0.78)	0.27 (0.23, 0.32)	
	80	0.27 (0.21, 0.34)	- (- , -)	- (- , -)	0.47 (0.35, 0.64)	0.22 (0.17, 0.29)	

Devcan Version 6.2.0, April 2006, National Cancer Institute (<http://srab.cancer.gov/devcan/>).

Source: Incidence data are from the SEER 17 areas (San Francisco, Connecticut, Detroit, Hawaii, Iowa, New Mexico, Seattle, Utah, Atlanta, San Jose-Monterey, Los Angeles, Alaska Native Registry, Rural Georgia, California excluding SF/SJM/LA, Kentucky, Louisiana and New Jersey). Mortality data are from the NCHS public use data file for the total US.

^a Underlying incidence and mortality data for American Indian/Alaska Native are based on the CHSDA (Contract Health Service Delivery Area) counties.

^b Hispanic is not mutually exclusive from whites, blacks, Asian/Pacific Islanders, and American Indians/Alaska Natives. Underlying incidence data for Hispanics are based on NHIA and exclude cases from the Alaska Native Registry and Kentucky. Underlying mortality data for Hispanics exclude deaths from Minnesota, New Hampshire and North Dakota.

- Statistic could not be calculated.

A percent or confidence interval value of 0.00 represents a value that is below 0.005.

Table XX-9 - continued
 CANCER OF THE ORAL CAVITY AND PHARYNX (Invasive)

Risk of Being Diagnosed With Cancer in 10, 20 and 30 Years, Lifetime Risk of Being Diagnosed with Cancer, and
 Lifetime Risk of Dying from Cancer Given Cancer Free At Current Age
 Females, 2002-2004 By Race/Ethnicity

Race/ Ethnicity	Current Age	Risk of Being Diagnosed with Cancer			Risk of Dying from Cancer	
		+10 yrs Percent (95% C.I.)	+20 yrs Percent (95% C.I.)	+30 yrs Percent (95% C.I.)	Eventually Percent (95% C.I.)	Eventually Percent (95% C.I.)
All Races	0	0.00 (0.00, 0.00)	0.00 (0.00, 0.00)	0.01 (0.01, 0.01)	0.65 (0.64, 0.67)	0.19 (0.18, 0.19)
	10	0.00 (0.00, 0.00)	0.01 (0.01, 0.01)	0.03 (0.03, 0.03)	0.66 (0.64, 0.68)	0.19 (0.19, 0.19)
	20	0.01 (0.01, 0.01)	0.03 (0.03, 0.03)	0.07 (0.07, 0.08)	0.66 (0.64, 0.67)	0.19 (0.19, 0.19)
	30	0.02 (0.02, 0.02)	0.07 (0.06, 0.07)	0.16 (0.15, 0.16)	0.65 (0.64, 0.67)	0.19 (0.19, 0.19)
	40	0.05 (0.04, 0.05)	0.14 (0.13, 0.15)	0.30 (0.29, 0.30)	0.64 (0.62, 0.66)	0.19 (0.19, 0.19)
	50	0.10 (0.09, 0.10)	0.25 (0.24, 0.26)	0.44 (0.42, 0.45)	0.60 (0.59, 0.62)	0.19 (0.18, 0.19)
	60	0.17 (0.16, 0.17)	0.36 (0.34, 0.37)	0.49 (0.48, 0.50)	0.53 (0.52, 0.55)	0.18 (0.17, 0.18)
	70	0.21 (0.20, 0.22)	0.36 (0.35, 0.38)	- (- , -)	0.41 (0.40, 0.43)	0.16 (0.15, 0.16)
80	0.20 (0.19, 0.21)	- (- , -)	- (- , -)	0.27 (0.25, 0.28)	0.12 (0.12, 0.13)	
White	0	0.00 (0.00, 0.00)	0.00 (0.00, 0.00)	0.01 (0.01, 0.01)	0.66 (0.64, 0.68)	0.19 (0.18, 0.19)
	10	0.00 (0.00, 0.00)	0.01 (0.01, 0.01)	0.03 (0.02, 0.03)	0.67 (0.65, 0.68)	0.19 (0.19, 0.20)
	20	0.01 (0.01, 0.01)	0.03 (0.02, 0.03)	0.07 (0.06, 0.07)	0.66 (0.65, 0.68)	0.19 (0.19, 0.20)
	30	0.02 (0.01, 0.02)	0.06 (0.06, 0.06)	0.15 (0.14, 0.16)	0.66 (0.64, 0.68)	0.19 (0.19, 0.20)
	40	0.04 (0.04, 0.05)	0.14 (0.13, 0.14)	0.29 (0.28, 0.31)	0.65 (0.63, 0.67)	0.19 (0.19, 0.20)
	50	0.09 (0.09, 0.10)	0.26 (0.25, 0.27)	0.45 (0.43, 0.46)	0.62 (0.60, 0.63)	0.19 (0.18, 0.19)
	60	0.17 (0.16, 0.18)	0.37 (0.36, 0.38)	0.50 (0.49, 0.52)	0.55 (0.53, 0.56)	0.18 (0.18, 0.19)
	70	0.22 (0.21, 0.23)	0.37 (0.36, 0.39)	- (- , -)	0.42 (0.41, 0.44)	0.16 (0.15, 0.16)
80	0.20 (0.19, 0.21)	- (- , -)	- (- , -)	0.27 (0.25, 0.28)	0.12 (0.12, 0.13)	
Black	0	0.00 (0.00, 0.00)	0.00 (0.00, 0.01)	0.01 (0.01, 0.02)	0.52 (0.48, 0.57)	0.16 (0.15, 0.18)
	10	0.00 (0.00, 0.01)	0.01 (0.01, 0.02)	0.03 (0.02, 0.04)	0.53 (0.49, 0.58)	0.17 (0.16, 0.18)
	20	0.01 (0.01, 0.01)	0.03 (0.02, 0.03)	0.09 (0.08, 0.10)	0.53 (0.49, 0.58)	0.17 (0.16, 0.18)
	30	0.02 (0.01, 0.02)	0.08 (0.07, 0.09)	0.19 (0.17, 0.21)	0.53 (0.48, 0.57)	0.17 (0.16, 0.18)
	40	0.06 (0.05, 0.07)	0.17 (0.15, 0.19)	0.30 (0.27, 0.33)	0.52 (0.47, 0.56)	0.17 (0.16, 0.18)
	50	0.11 (0.10, 0.13)	0.24 (0.22, 0.27)	0.37 (0.33, 0.40)	0.47 (0.43, 0.52)	0.16 (0.15, 0.17)
	60	0.14 (0.12, 0.17)	0.28 (0.24, 0.31)	0.36 (0.32, 0.41)	0.39 (0.35, 0.44)	0.15 (0.13, 0.16)
	70	0.16 (0.13, 0.19)	0.26 (0.22, 0.30)	- (- , -)	0.30 (0.25, 0.35)	0.12 (0.11, 0.13)
80	0.15 (0.12, 0.19)	- (- , -)	- (- , -)	0.20 (0.16, 0.26)	0.09 (0.08, 0.11)	

Devcan Version 6.2.0, April 2006, National Cancer Institute (<http://srab.cancer.gov/devcan/>).

Source: Incidence data are from the SEER 17 areas (San Francisco, Connecticut, Detroit, Hawaii, Iowa, New Mexico, Seattle, Utah, Atlanta, San Jose-Monterey, Los Angeles, Alaska Native Registry, Rural Georgia, California excluding SF/SJM/LA, Kentucky, Louisiana and New Jersey). Mortality data are from the NCHS public use data file for the total US.

- Statistic could not be calculated.

A percent or confidence interval value of 0.00 represents a value that is below 0.005.

Table XX-9 - continued
 CANCER OF THE ORAL CAVITY AND PHARYNX (Invasive)

Risk of Being Diagnosed With Cancer in 10, 20 and 30 Years, Lifetime Risk of Being Diagnosed with Cancer, and
 Lifetime Risk of Dying from Cancer Given Cancer Free At Current Age
 Females, 2002-2004 By Race/Ethnicity

Race/ Ethnicity	Current Age	Risk of Being Diagnosed with Cancer				Risk of Dying from Cancer	
		+10 yrs Percent (95% C.I.)	+20 yrs Percent (95% C.I.)	+30 yrs Percent (95% C.I.)	Eventually Percent (95% C.I.)	Eventually Percent (95% C.I.)	
Asian/ Pacific Islander	0	0.00 (0.00, 0.00)	0.01 (0.00, 0.01)	0.02 (0.01, 0.03)	0.66 (0.59, 0.76)	0.23 (0.18, 0.30)	
	10	0.01 (0.00, 0.01)	0.02 (0.01, 0.03)	0.05 (0.04, 0.06)	0.67 (0.59, 0.76)	0.23 (0.18, 0.30)	
	20	0.02 (0.01, 0.02)	0.05 (0.04, 0.06)	0.09 (0.08, 0.11)	0.66 (0.59, 0.76)	0.23 (0.18, 0.30)	
	30	0.03 (0.02, 0.04)	0.08 (0.07, 0.09)	0.15 (0.13, 0.17)	0.65 (0.57, 0.75)	0.23 (0.18, 0.30)	
	40	0.05 (0.04, 0.06)	0.12 (0.11, 0.14)	0.26 (0.23, 0.29)	0.62 (0.55, 0.72)	0.23 (0.18, 0.30)	
	50	0.08 (0.06, 0.09)	0.21 (0.18, 0.24)	0.35 (0.31, 0.39)	0.58 (0.51, 0.68)	0.23 (0.18, 0.30)	
	60	0.14 (0.11, 0.16)	0.27 (0.24, 0.31)	0.44 (0.39, 0.50)	0.52 (0.44, 0.62)	0.21 (0.16, 0.28)	
	70	0.15 (0.12, 0.18)	0.32 (0.27, 0.38)	- (- , -)	0.40 (0.33, 0.51)	0.19 (0.14, 0.27)	
80	0.21 (0.16, 0.27)	- (- , -)	- (- , -)	0.31 (0.23, 0.42)	0.18 (0.12, 0.27)		
American Indian/ Alaska Native ^a	0	0.00 (0.00, 0.04)	0.00 (0.00, 0.04)	0.00 (0.00, 0.04)	0.39 (0.24, 0.89)	0.18 (0.12, 0.33)	
	10	0.00 (0.00, 0.02)	0.00 (0.00, 0.03)	0.01 (0.00, 0.04)	0.40 (0.25, 0.90)	0.18 (0.12, 0.33)	
	20	0.00 (0.00, 0.03)	0.01 (0.00, 0.04)	0.06 (0.03, 0.11)	0.40 (0.25, 0.91)	0.18 (0.12, 0.34)	
	30	0.01 (0.00, 0.04)	0.06 (0.03, 0.11)	0.13 (0.07, 0.21)	0.41 (0.25, 0.92)	0.18 (0.12, 0.34)	
	40	0.05 (0.02, 0.10)	0.12 (0.07, 0.21)	0.25 (0.15, 0.40)	0.40 (0.25, 0.92)	0.19 (0.12, 0.35)	
	50	0.07 (0.03, 0.14)	0.21 (0.11, 0.35)	0.32 (0.19, 0.53)	0.36 (0.21, 0.90)	0.19 (0.12, 0.36)	
	60	0.14 (0.06, 0.28)	0.26 (0.14, 0.47)	0.31 (0.16, 0.57)	0.31 (0.16, 0.87)	0.17 (0.10, 0.35)	
	70	0.14 (0.04, 0.33)	0.19 (0.06, 0.46)	- (- , -)	0.19 (0.06, 0.84)	0.14 (0.07, 0.34)	
80	0.07 (0.01, 0.35)	- (- , -)	- (- , -)	0.07 (0.01, 0.93)	0.07 (0.02, 0.33)		
Hispanic ^b	0	0.00 (0.00, 0.00)	0.00 (0.00, 0.00)	0.01 (0.01, 0.01)	0.43 (0.38, 0.50)	0.13 (0.11, 0.15)	
	10	0.00 (0.00, 0.00)	0.01 (0.01, 0.01)	0.02 (0.01, 0.02)	0.44 (0.38, 0.51)	0.13 (0.11, 0.16)	
	20	0.01 (0.00, 0.01)	0.02 (0.01, 0.02)	0.04 (0.03, 0.05)	0.44 (0.38, 0.51)	0.13 (0.11, 0.16)	
	30	0.01 (0.01, 0.01)	0.04 (0.03, 0.04)	0.09 (0.07, 0.10)	0.43 (0.38, 0.50)	0.13 (0.11, 0.16)	
	40	0.03 (0.02, 0.03)	0.08 (0.07, 0.09)	0.15 (0.13, 0.17)	0.43 (0.37, 0.50)	0.13 (0.11, 0.16)	
	50	0.05 (0.04, 0.06)	0.13 (0.11, 0.15)	0.25 (0.22, 0.29)	0.41 (0.35, 0.48)	0.13 (0.11, 0.15)	
	60	0.08 (0.06, 0.10)	0.21 (0.18, 0.24)	0.32 (0.28, 0.37)	0.37 (0.31, 0.44)	0.13 (0.10, 0.15)	
	70	0.14 (0.12, 0.17)	0.26 (0.22, 0.31)	- (- , -)	0.32 (0.26, 0.39)	0.11 (0.09, 0.14)	
80	0.15 (0.11, 0.20)	- (- , -)	- (- , -)	0.22 (0.16, 0.31)	0.10 (0.08, 0.13)		

Devcan Version 6.2.0, April 2006, National Cancer Institute (<http://srab.cancer.gov/devcan/>).

Source: Incidence data are from the SEER 17 areas (San Francisco, Connecticut, Detroit, Hawaii, Iowa, New Mexico, Seattle, Utah, Atlanta, San Jose-Monterey, Los Angeles, Alaska Native Registry, Rural Georgia, California excluding SF/SJM/LA, Kentucky, Louisiana and New Jersey). Mortality data are from the NCHS public use data file for the total US.

^a Underlying incidence and mortality data for American Indian/Alaska Native are based on the CHSDA (Contract Health Service Delivery Area) counties.

^b Hispanic is not mutually exclusive from whites, blacks, Asian/Pacific Islanders, and American Indians/Alaska Natives. Underlying incidence data for Hispanics are based on NHIA and exclude cases from the Alaska Native Registry and Kentucky. Underlying mortality data for Hispanics exclude deaths from Minnesota, New Hampshire and North Dakota.

- Statistic could not be calculated.

A percent or confidence interval value of 0.00 represents a value that is below 0.005.

Table XX-10a
CANCER OF THE ORAL CAVITY AND PHARYNX (Invasive)

SEER INCIDENCE AND U.S. MORTALITY
AGE-ADJUSTED RATES AND TRENDS^a
 By Race/Ethnicity and Sex

SEER Incidence

RACE/ETHNICITY	Rate 2000-2004 ^b			Trend 1995-2004 ^c		
	Rate per 100,000 persons			APC (%)		
	Total	Males	Females	Total	Males	Females
All Races	10.5	15.6	6.1	-1.5*	-1.6*	-1.8*
White	10.6	15.7	6.1	-1.3*	-1.2*	-2.0*
White Hispanic ^d	6.3	9.5	3.6	-2.6*	-3.2*	-1.5
White Non-Hispanic ^d	11.2	16.6	6.6	-1.0*	-0.9*	-1.8*
Black	11.1	18.1	5.7	-3.0*	-3.6*	-1.5
Asian/Pacific Islander	7.9	10.8	5.4	-1.8	-2.3	-0.7
Amer Ind/Alaska Nat ^e	7.1	10.0	4.6	-3.5	-	-
Hispanic ^d	6.2	9.3	3.6	-2.6*	-3.2*	-1.7

U.S. Mortality^f

RACE/ETHNICITY	Rate 2000-2004			Trend 1995-2004		
	Rate per 100,000 persons			APC (%)		
	Total	Males	Females	Total	Males	Females
All Races	2.7	4.1	1.5	-2.1*	-2.1*	-2.5*
White	2.5	3.8	1.5	-1.8*	-1.8*	-2.3*
White Hispanic ^d	1.7	2.8	0.9	-2.8*	-4.0*	-0.3
White Non-Hispanic ^d	2.6	3.9	1.5	-1.7*	-1.7*	-2.3*
Black	3.9	6.8	1.7	-3.8*	-3.6*	-4.5*
Asian/Pacific Islander	2.3	3.4	1.3	-2.6*	-2.6*	-2.3
Amer Ind/Alaska Nat						
Total U.S.	2.1	3.2	1.3	-1.8	-2.1	-
CHSDA Counties	2.5	3.8	1.5	-0.3	-	-
Non-CHSDA Counties	1.7	2.6	1.0	-	-	-
Hispanic ^d	1.7	2.8	0.8	-2.9*	-4.0*	-0.5

- The APC is the Annual Percent Change over the time interval.
- Statistic not shown. Rate based on less than 16 cases for the time interval. Trend based on less than 10 cases for at least one year within the time interval.
- a Rates are age-adjusted to the 2000 US Std Population (19 age groups - Census P25-1130). Trends are based on rates age-adjusted to the 2000 US Std Population (19 age groups - Census P25-1130).
- b Incidence data used in calculating the rates are from the 17 SEER areas (San Francisco, Connecticut, Detroit, Hawaii, Iowa, New Mexico, Seattle, Utah, Atlanta, San Jose-Monterey, Los Angeles, Alaska Native Registry, Rural Georgia, California excluding SF/SJM/LA, Kentucky, Louisiana and New Jersey).
- c Incidence data used in calculating the trends are from the 13 SEER areas (San Francisco, Connecticut, Detroit, Hawaii, Iowa, New Mexico, Seattle, Utah, Atlanta, San Jose-Monterey, Los Angeles, Alaska Native Registry and Rural Georgia).
- d Hispanic and Non-Hispanic are not mutually exclusive from whites, blacks, Asian/Pacific Islanders, and American Indians/Alaska Natives. Incidence data for Hispanics and Non-Hispanics are based on NHIA and exclude cases from the Alaska Native Registry and Kentucky. The 2000-2004 Hispanic and Non-Hispanic death rates exclude deaths from Minnesota, New Hampshire and North Dakota. The 1995-2004 Hispanic and Non-Hispanic mortality trends exclude deaths from Maine, Minnesota, New Hampshire, North Dakota, and Oklahoma.
- e Incidence data for American Indian/Alaska Native are based on the CHSDA(Contract Health Service Delivery Area) counties.
- f Mortality data are analyzed from a public use file provided by the National Center for Health Statistics (NCHS).
- * The APC is significantly different from zero (p<.05).

Table XX-10b
 CANCER OF THE ORAL CAVITY AND PHARYNX BY SUBSITE (Invasive)

SEER INCIDENCE
 AGE-ADJUSTED RATES AND TRENDS^a BY RACE AND SEX

	Site									
	Oral Cavity & Pharynx	Lip	Tongue	Floor of Mouth	Gum & Other Mouth	Oropharynx & Tonsil	Hypophar.	Salivary Gland	Nasophar.	Other Oral Cavity & Pharynx
<u>2000-2004, Rate per 100,000 persons^b</u>										
All Races										
Male and Female	10.5	0.9	2.7	0.7	1.6	1.8	0.7	1.2	0.7	0.2
Male	15.6	1.5	4.1	1.0	1.9	3.0	1.3	1.6	1.0	0.4
Female	6.1	0.4	1.6	0.4	1.3	0.7	0.3	0.9	0.4	0.1
White										
Male and Female	10.6	1.0	2.9	0.7	1.6	1.8	0.7	1.2	0.4	0.2
Male	15.7	1.7	4.3	1.1	1.9	3.0	1.2	1.7	0.6	0.4
Female	6.1	0.4	1.7	0.4	1.3	0.8	0.3	0.9	0.2	0.1
Black										
Male and Female	11.1	0.1	2.5	0.9	1.9	2.3	1.3	1.0	0.7	0.5
Male	18.1	0.2	4.1	1.5	2.5	4.1	2.4	1.2	1.2	0.8
Female	5.7	-	1.2	0.4	1.3	0.9	0.4	0.9	0.4	0.2
<u>Trend 1995-2004^c, APC(%)</u>										
All Races										
Male and Female	-1.5*	-5.2*	1.2*	-5.5*	-2.8*	1.5*	-4.7*	-0.6	-1.5	-7.3*
Male	-1.6*	-6.0*	1.4*	-4.9*	-3.4*	2.0*	-4.5*	-1.0	-1.4	-8.2*
Female	-1.8*	-2.9*	0.4	-6.7*	-2.5*	-0.7	-5.8*	-0.4	-1.9*	-5.4*
White										
Male and Female	-1.3*	-5.0*	1.8*	-5.3*	-2.6*	2.4*	-4.5*	-0.9	-2.5*	-7.3*
Male	-1.2*	-5.8*	2.1*	-4.4*	-2.9*	2.9*	-4.1*	-1.3	-2.1	-7.9*
Female	-2.0*	-2.8*	0.7	-7.3*	-2.7*	-0.1	-6.1*	-0.7	-3.6*	-6.5*
Black										
Male and Female	-3.0*	-	-1.1	-6.3	-3.5*	-2.7	-4.5	-1.2	-2.7	-
Male	-3.6*	-	-1.4	-6.1	-4.8*	-2.8	-5.6*	-2.4	-	-
Female	-1.5	-	-0.2	-	-0.9	-2.2	-	-0.8	-	-

The APC is the Annual Percent Change over the time interval.

- Statistic not shown. Rate based on less than 16 cases for the time interval. Trend based on less than 10 cases for at least one year within the time interval.

^a Rates are age-adjusted to the 2000 US Std Population (19 age groups - Census P25-1130). Trends are based on rates age-adjusted to the 2000 US Std Population (19 age groups - Census P25-1130).

^b Incidence data used in calculating the rates are from the 17 SEER areas (San Francisco, Connecticut, Detroit, Hawaii, Iowa, New Mexico, Seattle, Utah, Atlanta, San Jose-Monterey, Los Angeles, Alaska Native Registry, Rural Georgia, California excluding SF/SJM/LA, Kentucky, Louisiana and New Jersey).

^c Incidence data used in calculating the trends are from the 13 SEER areas (San Francisco, Connecticut, Detroit, Hawaii, Iowa, New Mexico, Seattle, Utah, Atlanta, San Jose-Monterey, Los Angeles, Alaska Native Registry and Rural Georgia).

* The APC is significantly different from zero (p<.05).

Table XX-10c
ORAL CAVITY AND PHARYNGEAL CANCER BY SUBSITE (Invasive)

U.S. MORTALITY^a
AGE-ADJUSTED RATES AND TRENDS^b BY RACE AND SEX

	Site									
	Oral Cavity & Pharynx	Lip	Tongue	Floor of Mouth	Gum & Other Mouth	Oropharynx & Tonsil	Hypophar.	Salivary Gland	Nasophar.	Other Oral Cavity & Pharynx
<u>2000-2004, Rate per 100,000 persons</u>										
All Races										
Male and Female	2.7	0.0	0.6	0.0	0.4	0.4	0.1	0.2	0.2	0.6
Male	4.1	0.0	0.9	0.1	0.5	0.7	0.2	0.4	0.3	0.9
Female	1.5	0.0	0.4	0.0	0.3	0.2	0.0	0.2	0.1	0.3
White										
Male and Female	2.5	0.0	0.6	0.0	0.4	0.4	0.1	0.2	0.2	0.5
Male	3.8	0.1	0.9	0.1	0.5	0.6	0.2	0.4	0.2	0.8
Female	1.5	0.0	0.4	0.0	0.3	0.2	0.0	0.2	0.1	0.2
Black										
Male and Female	3.9	-	0.7	0.1	0.5	0.7	0.2	0.2	0.3	1.1
Male	6.8	-	1.3	0.1	0.8	1.3	0.4	0.2	0.5	2.1
Female	1.7	-	0.3	0.0	0.3	0.3	0.1	0.1	0.2	0.4
<u>Trend 1995-2004 ,APC(%)</u>										
All Races										
Male and Female	-2.1*	-4.2*	-1.1*	-9.1*	-4.3*	-0.4	-4.2*	-0.9*	-3.1*	-1.5*
Male	-2.1*	-5.4*	-1.5*	-8.7*	-5.0*	0.2	-4.4*	-0.7	-3.3*	-1.4*
Female	-2.5*	-3.0	-0.9*	-10.1*	-3.6*	-2.3*	-4.5*	-1.8*	-2.7*	-2.6*
White										
Male and Female	-1.8*	-4.0*	-0.6	-8.7*	-3.9*	0.4	-4.2*	-0.7	-3.8*	-1.4*
Male	-1.8*	-5.1*	-0.9	-8.4*	-4.7*	1.1	-4.5*	-0.5	-3.9*	-1.2
Female	-2.3*	-2.7	-0.4	-9.5*	-3.2*	-1.8*	-3.9*	-1.7*	-3.8*	-2.5*
Black										
Male and Female	-3.8*	-	-4.9*	-10.7*	-6.1*	-3.7*	-4.8*	-2.3*	-1.1	-2.1*
Male	-3.6*	-	-4.9*	-9.4*	-5.6*	-3.3*	-4.0	-3.0	-1.5	-2.0
Female	-4.5*	-	-5.3*	-	-7.4*	-5.1*	-	-1.4	0.1	-2.7

The APC is the Annual Percent Change over the time interval.

- Statistic not shown. Rate based on less than 16 cases for the time interval. Trend based on less than 10 cases for at least one year within the time interval.

^a Mortality data are analyzed from a public use file provided by the National Center for Health Statistics (NCHS).

^b Rates are age-adjusted to the 2000 US Std Population (19 age groups - Census P25-1130). Trends are based on rates age-adjusted to the 2000 US Std Population (19 age groups - Census P25-1130).

* The APC is significantly different from zero (p<.05).

Table XX-11
 CANCER OF THE ORAL CAVITY AND PHARYNX (Invasive)

AGE-ADJUSTED SEER INCIDENCE RATES^a
 By Registry, Race and Sex

	All Races			Whites			Blacks		
	Total	Males	Females	Total	Males	Females	Total	Males	Females
<u>SEER INCIDENCE RATES^a, 2000-2004</u>									
REGISTRY									
Atlanta & Rural Georgia	10.6	15.4	6.7	10.6	15.5	6.3	11.1	16.0	7.4
Atlanta	10.4	15.1	6.5	10.5	15.4	6.2	10.8	15.5	7.4
Rural Georgia	13.9	20.2	8.9	13.0	17.9	9.5	15.3	25.9	-
California	10.2	15.0	6.1	10.5	15.5	6.1	9.9	15.6	5.5
Greater Bay Area	10.3	14.6	6.5	10.5	15.0	6.5	9.6	14.3	6.0
San Francisco-Oakland	10.8	15.4	6.9	11.1	15.7	7.0	9.7	14.5	6.0
San Jose-Monterey	9.2	13.2	5.8	9.4	13.8	5.7	10.5	15.0	-
Los Angeles	9.3	13.9	5.6	9.5	14.2	5.6	10.4	17.0	5.5
Greater California	10.6	15.7	6.2	10.9	16.1	6.2	9.7	14.8	5.3
Connecticut	9.9	14.5	6.1	9.8	14.4	5.9	12.0	18.1	7.8
Detroit	12.1	18.6	6.9	11.9	17.7	7.2	12.9	22.2	6.0
Hawaii	10.7	15.7	6.2	15.5	21.5	9.2	-	-	-
Iowa	10.9	16.5	6.3	10.8	16.2	6.2	11.0	15.0	-
Kentucky	11.6	18.6	5.9	11.4	18.3	5.8	12.3	20.8	5.5
Louisiana	12.0	19.3	5.9	12.1	18.9	6.3	11.8	20.9	5.0
New Jersey	9.8	14.5	6.0	9.6	14.1	5.9	11.4	19.4	5.6
New Mexico	9.3	14.0	5.3	9.8	14.6	5.5	-	-	-
Seattle-Puget Sound	11.0	15.9	6.6	11.3	16.3	6.8	8.3	13.2	-
Utah	8.3	11.6	5.3	8.3	11.8	5.2	-	-	-
9 SEER Areas ^b	10.6	15.6	6.4	10.7	15.7	6.4	11.2	17.6	6.3
11 SEER Areas ^b	10.2	15.1	6.2	10.4	15.3	6.2	10.9	17.4	6.1
13 SEER Areas ^b	10.3	15.1	6.2	10.4	15.3	6.2	11.0	17.5	6.1
17 SEER Areas ^b	10.5	15.6	6.1	10.6	15.7	6.1	11.1	18.1	5.7

^a Rates are per 100,000 and are age-adjusted to the 2000 US Std Population (19 age groups - Census P25-1130)

^b The SEER 9 areas are San Francisco, Connecticut, Detroit, Hawaii, Iowa, New Mexico, Seattle, Utah and Atlanta.

The SEER 11 areas comprise the SEER 9 areas plus San Jose-Monterey and Los Angeles.

The SEER 13 areas comprise the SEER 11 areas plus the Alaska Native Registry and Rural Georgia.

The SEER 17 areas comprise the SEER 13 areas plus California excluding SF/SJM/LA, Kentucky, Louisiana and New Jersey

- Statistic not shown. Rate based on less than 16 cases for the time interval.

Table XX-12
 CANCER OF THE ORAL CAVITY AND PHARYNX (Invasive)

AGE-ADJUSTED SEER DEATH RATES^a
 By Registry, Race and Sex

	All Races			Whites			Blacks		
	Total	Males	Females	Total	Males	Females	Total	Males	Females
<u>SEER DEATH RATES^a, 2000-2004</u>									
REGISTRY									
Atlanta & Rural Georgia	2.3	3.3	1.6	2.0	2.7	1.4	3.3	5.1	2.1
Atlanta	2.2	3.1	1.5	1.9	2.6	1.3	3.2	4.8	2.0
Rural Georgia	4.6	7.0	-	3.9	-	-	-	-	-
California	2.7	4.0	1.7	2.7	3.9	1.7	3.7	5.8	2.1
Greater Bay Area	2.7	3.9	1.7	2.5	3.5	1.7	3.9	5.9	2.3
San Francisco-Oakland	2.9	4.3	1.8	2.7	3.8	1.8	4.0	6.1	2.4
San Jose-Monterey	2.2	3.3	1.4	2.1	3.0	1.5	-	-	-
Los Angeles	2.6	3.9	1.6	2.4	3.7	1.5	4.0	6.6	2.2
Greater California	2.8	4.1	1.8	2.9	4.1	1.8	3.1	4.7	1.8
Connecticut	2.2	3.6	1.1	2.1	3.4	1.1	3.7	6.8	-
Detroit	2.7	4.3	1.5	2.4	3.8	1.4	3.7	6.8	1.4
Hawaii	3.1	4.7	1.7	4.4	5.9	3.0	-	-	-
Iowa	2.3	3.4	1.4	2.3	3.3	1.4	-	-	-
Kentucky	3.0	4.7	1.6	2.9	4.4	1.6	4.9	9.0	-
Louisiana	3.5	5.8	1.7	3.1	4.9	1.6	4.7	8.6	2.0
New Jersey	2.5	3.8	1.4	2.3	3.5	1.4	4.0	6.8	2.1
New Mexico	1.8	2.6	1.1	1.8	2.6	1.1	-	-	-
Seattle-Puget Sound	2.9	4.3	1.8	2.9	4.3	1.8	-	-	-
Utah	1.8	2.7	1.1	1.7	2.6	1.1	-	-	-
9 SEER Areas ^b	2.5	3.8	1.5	2.4	3.5	1.4	3.4	5.8	1.7
11 SEER Areas ^b	2.5	3.8	1.5	2.4	3.5	1.4	3.6	6.0	1.8
13 SEER Areas ^b	2.5	3.8	1.5	2.4	3.5	1.5	3.6	6.1	1.9
17 SEER Areas ^b	2.7	4.0	1.6	2.6	3.8	1.6	3.9	6.6	1.9
Total U.S.	2.7	4.1	1.5	2.5	3.8	1.5	3.9	6.8	1.7

^a NCHS public use data file for the total US. Rates are per 100,000 and are age-adjusted to the 2000 US Std Population (19 age groups - Census P25-1130).

^b The SEER 9 areas are San Francisco, Connecticut, Detroit, Hawaii, Iowa, New Mexico, Seattle, Utah and Atlanta.

The SEER 11 areas comprise the SEER 9 areas plus San Jose-Monterey and Los Angeles.

The SEER 13 areas comprise the SEER 11 areas plus the Alaska Native Registry and Rural Georgia.

The SEER 17 areas comprise the SEER 13 areas plus California excluding SF/SJM/LA, Kentucky, Louisiana and New Jersey

- Statistic not shown. Rate based on less than 16 cases for the time interval.

Table XX-13
 CANCER OF THE ORAL CAVITY AND PHARYNX (Invasive)

AVERAGE ANNUAL AGE-ADJUSTED CANCER DEATH^a RATES BY STATE, ALL RACES, 2000-2004

Males and Females

State	Rate	SE	Rank	PD	State	Rate	SE	Rank	PD
TOTAL U.S.	2.7	0.01							
High Five States									
District of Columbia	4.1 ^b	0.39	(01)	51.9 ^c					
Alaska	3.9	0.48	(02)	44.4 ^c					
Mississippi	3.6 ^b	0.16	(03)	33.3 ^c					
Louisiana	3.5 ^b	0.13	(04)	29.6 ^c					
South Carolina	3.5 ^b	0.13	(05)	29.6 ^c					
Low Five States									
Montana	2.2	0.21	(47)	-18.5 ^c					
Nebraska	2.1 ^b	0.15	(48)	-22.2 ^c					
Colorado	2.0 ^b	0.10	(49)	-25.9 ^c					
New Mexico	1.8 ^b	0.14	(50)	-33.3 ^c					
Utah	1.8 ^b	0.15	(51)	-33.3 ^c					
Alabama	3.0	0.11	(11)	11.1	Montana	2.2	0.21	(47)	-18.5 ^c
Alaska	3.9	0.48	(02)	44.4 ^c	Nebraska	2.1 ^b	0.15	(48)	-22.2 ^c
Arizona	2.2 ^b	0.09	(44)	-18.5 ^c	Nevada	3.0	0.18	(12)	11.1
Arkansas	3.1	0.14	(09)	14.8	New Hampshire	3.1	0.22	(06)	14.8
California	2.7	0.04	(21)	0.0	New Jersey	2.5	0.07	(33)	-7.4
Colorado	2.0 ^b	0.10	(49)	-25.9 ^c	New Mexico	1.8 ^b	0.14	(50)	-33.3 ^c
Connecticut	2.2 ^b	0.11	(45)	-18.5 ^c	New York	2.4 ^b	0.05	(36)	-11.1
Delaware	2.5	0.24	(34)	-7.4	North Carolina	2.8	0.08	(18)	3.7
District of Columbia	4.1 ^b	0.39	(01)	51.9 ^c	North Dakota	3.1	0.29	(08)	14.8
Florida	3.0 ^b	0.05	(14)	11.1	Ohio	2.6	0.07	(28)	-3.7
Georgia	2.9	0.09	(16)	7.4	Oklahoma	2.6	0.12	(26)	-3.7
Hawaii	3.1	0.21	(10)	14.8	Oregon	2.7	0.12	(25)	0.0
Idaho	2.8	0.21	(19)	3.7	Pennsylvania	2.4 ^b	0.06	(37)	-11.1
Illinois	2.6	0.07	(27)	-3.7	Rhode Island	2.2	0.19	(46)	-18.5 ^c
Indiana	2.2 ^b	0.09	(43)	-18.5 ^c	South Carolina	3.5 ^b	0.13	(05)	29.6 ^c
Iowa	2.3	0.12	(42)	-14.8	South Dakota	2.3	0.24	(41)	-14.8
Kansas	2.3	0.13	(39)	-14.8	Tennessee	3.1 ^b	0.10	(07)	14.8
Kentucky	3.0	0.12	(15)	11.1	Texas	2.8	0.06	(20)	3.7
Louisiana	3.5 ^b	0.13	(04)	29.6 ^c	Utah	1.8 ^b	0.15	(51)	-33.3 ^c
Maine	3.0	0.20	(13)	11.1	Vermont	2.4	0.27	(38)	-11.1
Maryland	2.7	0.10	(22)	0.0	Virginia	2.5	0.09	(32)	-7.4
Massachusetts	2.7	0.09	(23)	0.0	Washington	2.9	0.10	(17)	7.4
Michigan	2.6	0.07	(29)	-3.7	West Virginia	2.5	0.15	(31)	-7.4
Minnesota	2.3	0.10	(40)	-14.8	Wisconsin	2.6	0.10	(30)	-3.7
Mississippi	3.6 ^b	0.16	(03)	33.3 ^c	Wyoming	2.7	0.33	(24)	0.0
Missouri	2.4	0.09	(35)	-11.1					

^a NCHS public use data file. Rates are per 100,000 and are age-adjusted to the 2000 US Std Population (19 age groups - Census P25-1130).

^b Difference between state rate and total U.S. rate is statistically significant ($p < .0002$).

^c Absolute percent difference between state rate and total U.S. rate is 15% or more.

SE Standard error of the rate.

PD Percent difference between state rate and total U.S. rate.

Table XX-14
 CANCER OF THE ORAL CAVITY AND PHARYNX (Invasive)

AVERAGE ANNUAL AGE-ADJUSTED CANCER DEATH^a RATES BY STATE, ALL RACES, 2000-2004

Males

State	Rate	SE	Rank	PD	State	Rate	SE	Rank	PD
TOTAL U.S.	4.1	0.03							
High Five States									
District of Columbia	7.4 ^b	0.79	(01)	80.5 ^c					
South Carolina	5.8 ^b	0.25	(02)	41.5 ^c					
Louisiana	5.8 ^b	0.25	(03)	41.5 ^c					
Mississippi	5.8 ^b	0.31	(04)	41.5 ^c					
Arkansas	5.2 ^b	0.29	(05)	26.8 ^c					
Low Five States									
Colorado	3.1 ^b	0.20	(47)	-24.4 ^c					
Montana	3.0	0.37	(48)	-26.8 ^c					
South Dakota	2.9	0.40	(49)	-29.3 ^c					
Utah	2.7 ^b	0.27	(50)	-34.1 ^c					
New Mexico	2.6 ^b	0.26	(51)	-36.6 ^c					
Alabama	4.8	0.22	(08)	17.1 ^c	Montana	3.0	0.37	(48)	-26.8 ^c
Alaska	4.8	0.80	(07)	17.1 ^c	Nebraska	3.1	0.28	(45)	-24.4 ^c
Arizona	3.4 ^b	0.17	(42)	-17.1 ^c	Nevada	4.4	0.32	(15)	7.3
Arkansas	5.2 ^b	0.29	(05)	26.8 ^c	New Hampshire	4.5	0.40	(14)	9.8
California	4.0	0.08	(24)	-2.4	New Jersey	3.8	0.14	(32)	-7.3
Colorado	3.1 ^b	0.20	(47)	-24.4 ^c	New Mexico	2.6 ^b	0.26	(51)	-36.6 ^c
Connecticut	3.6	0.21	(36)	-12.2	New York	3.7 ^b	0.09	(34)	-9.8
Delaware	3.7	0.45	(33)	-9.8	North Carolina	4.1	0.16	(20)	0.0
District of Columbia	7.4 ^b	0.79	(01)	80.5 ^c	North Dakota	4.6	0.54	(12)	12.2
Florida	4.5 ^b	0.10	(13)	9.8	Ohio	4.1	0.13	(22)	0.0
Georgia	4.3	0.17	(17)	4.9	Oklahoma	4.0	0.23	(25)	-2.4
Hawaii	4.7	0.39	(10)	14.6	Oregon	3.7	0.21	(35)	-9.8
Idaho	3.9	0.37	(28)	-4.9	Pennsylvania	3.8	0.11	(30)	-7.3
Illinois	4.1	0.12	(23)	0.0	Rhode Island	3.2	0.36	(44)	-22.0 ^c
Indiana	3.4 ^b	0.16	(40)	-17.1 ^c	South Carolina	5.8 ^b	0.25	(02)	41.5 ^c
Iowa	3.4	0.22	(43)	-17.1 ^c	South Dakota	2.9	0.40	(49)	-29.3 ^c
Kansas	3.5	0.24	(39)	-14.6	Tennessee	5.0 ^b	0.20	(06)	22.0 ^c
Kentucky	4.7	0.23	(09)	14.6	Texas	4.3	0.11	(18)	4.9
Louisiana	5.8 ^b	0.25	(03)	41.5 ^c	Utah	2.7 ^b	0.27	(50)	-34.1 ^c
Maine	4.6	0.38	(11)	12.2	Vermont	3.5	0.51	(38)	-14.6
Maryland	4.4	0.20	(16)	7.3	Virginia	3.9	0.16	(26)	-4.9
Massachusetts	4.1	0.17	(21)	0.0	Washington	4.2	0.18	(19)	2.4
Michigan	3.9	0.13	(27)	-4.9	West Virginia	3.9	0.29	(29)	-4.9
Minnesota	3.4 ^b	0.18	(41)	-17.1 ^c	Wisconsin	3.8	0.18	(31)	-7.3
Mississippi	5.8 ^b	0.31	(04)	41.5 ^c	Wyoming	3.1	0.53	(46)	-24.4 ^c
Missouri	3.6	0.16	(37)	-12.2					

^a NCHS public use data file. Rates are per 100,000 and are age-adjusted to the 2000 US Std Population (19 age groups - Census P25-1130).

^b Difference between state rate and total U.S. rate is statistically significant ($p < .0002$).

^c Absolute percent difference between state rate and total U.S. rate is 15% or more.

SE Standard error of the rate.

PD Percent difference between state rate and total U.S. rate.

Table XX-15
 CANCER OF THE ORAL CAVITY AND PHARYNX (Invasive)

AVERAGE ANNUAL AGE-ADJUSTED CANCER DEATH^a RATES BY STATE, ALL RACES, 2000-2004

Females

State	Rate	SE	Rank	PD	State	Rate	SE	Rank	PD
TOTAL U.S.	1.5	0.01							
High Five States									
Alaska	3.0	0.59	(01)	100.0 ^c					
Wyoming	2.2	0.40	(02)	46.7 ^c					
New Hampshire	2.0	0.24	(03)	33.3 ^c					
North Dakota	1.9	0.31	(04)	26.7 ^c					
Oregon	1.8	0.13	(05)	20.0 ^c					
Low Five States									
Nebraska	1.2	0.15	(47)	-20.0 ^c					
Arizona	1.2 ^b	0.09	(48)	-20.0 ^c					
Connecticut	1.1 ^b	0.10	(49)	-26.7 ^c					
New Mexico	1.1	0.15	(50)	-26.7 ^c					
Utah	1.1	0.15	(51)	-26.7 ^c					
Alabama	1.6	0.11	(20)	6.7	Montana	1.5	0.24	(26)	0.0
Alaska	3.0	0.59	(01)	100.0 ^c	Nebraska	1.2	0.15	(47)	-20.0 ^c
Arizona	1.2 ^b	0.09	(48)	-20.0 ^c	Nevada	1.7	0.19	(11)	13.3
Arkansas	1.4	0.13	(39)	-6.7	New Hampshire	2.0	0.24	(03)	33.3 ^c
California	1.7 ^b	0.04	(13)	13.3	New Jersey	1.4	0.07	(31)	-6.7
Colorado	1.2	0.11	(46)	-20.0 ^c	New Mexico	1.1	0.15	(50)	-26.7 ^c
Connecticut	1.1 ^b	0.10	(49)	-26.7 ^c	New York	1.4	0.05	(38)	-6.7
Delaware	1.4	0.25	(30)	-6.7	North Carolina	1.8	0.09	(10)	20.0 ^c
District of Columbia	1.6	0.32	(19)	6.7	North Dakota	1.9	0.31	(04)	26.7 ^c
Florida	1.7	0.05	(15)	13.3	Ohio	1.4	0.06	(33)	-6.7
Georgia	1.8	0.09	(06)	20.0 ^c	Oklahoma	1.6	0.12	(24)	6.7
Hawaii	1.7	0.21	(16)	13.3	Oregon	1.8	0.13	(05)	20.0 ^c
Idaho	1.8	0.23	(07)	20.0 ^c	Pennsylvania	1.3 ^b	0.06	(45)	-13.3
Illinois	1.4	0.06	(35)	-6.7	Rhode Island	1.4	0.21	(34)	-6.7
Indiana	1.3	0.09	(44)	-13.3	South Carolina	1.5	0.11	(27)	0.0
Iowa	1.4	0.12	(37)	-6.7	South Dakota	1.8	0.28	(08)	20.0 ^c
Kansas	1.3	0.13	(42)	-13.3	Tennessee	1.6	0.10	(18)	6.7
Kentucky	1.6	0.12	(22)	6.7	Texas	1.5	0.05	(28)	0.0
Louisiana	1.7	0.12	(14)	13.3	Utah	1.1	0.15	(51)	-26.7 ^c
Maine	1.6	0.20	(17)	6.7	Vermont	1.4	0.27	(36)	-6.7
Maryland	1.4	0.10	(41)	-6.7	Virginia	1.4	0.08	(40)	-6.7
Massachusetts	1.6	0.09	(21)	6.7	Washington	1.8	0.11	(09)	20.0 ^c
Michigan	1.5	0.07	(25)	0.0	West Virginia	1.3	0.15	(43)	-13.3
Minnesota	1.4	0.10	(32)	-6.7	Wisconsin	1.6	0.10	(23)	6.7
Mississippi	1.7	0.15	(12)	13.3	Wyoming	2.2	0.40	(02)	46.7 ^c
Missouri	1.5	0.09	(29)	0.0					

^a NCHS public use data file. Rates are per 100,000 and are age-adjusted to the 2000 US Std Population (19 age groups - Census P25-1130).

^b Difference between state rate and total U.S. rate is statistically significant ($p < .0002$).

^c Absolute percent difference between state rate and total U.S. rate is 15% or more.

SE Standard error of the rate.

PD Percent difference between state rate and total U.S. rate.

Table XX-16
 CANCER OF THE ORAL CAVITY AND PHARYNX (Invasive)

Estimated United States Cancer Prevalence Counts^a on January 1, 2004
 By Race/Ethnicity, Sex and Years Since Diagnosis

Years Since Diagnosis	0 to <5	5 to <10	10 to <15	15 to <20	20 to <25	0 to <14 ^e	0 to <29 ^e	>=29 ^g	Complete ^h
Race/Sex									
All Races ^b	84,371	53,189	34,017	23,121	14,774	166,010	217,906	17,950	235,856
Males	56,621	34,320	21,542	13,940	8,760	109,190	140,286	10,660	150,946
Females	27,750	18,869	12,475	9,181	6,014	56,820	77,620	7,290	84,910
White ^b	72,469	46,784	29,976	20,744	13,156	144,341	190,725	15,254	205,979
Males	49,197	30,423	19,313	12,735	8,049	96,013	124,432	9,152	133,584
Females	23,272	16,361	10,663	8,009	5,107	48,328	66,293	6,102	72,395
Black ^b	7,507	3,608	2,398	1,515	942	13,096	16,436	896	17,332
Males	4,671	2,189	1,250	759	348	7,876	9,384	346	9,730
Females	2,836	1,419	1,148	756	594	5,220	7,052	550	7,602
Asian/Pacific Islander ^c	2,873	1,819	+	+	+	5,550	+	+	+
Males	1,783	1,129	+	+	+	3,443	+	+	+
Females	1,090	690	+	+	+	2,107	+	+	+
Hispanic ^d	3,534	2,119	+	+	+	6,739	+	+	+
Males	2,286	1,297	+	+	+	4,172	+	+	+
Females	1,248	822	+	+	+	2,567	+	+	+

Estimated prevalence percent^a on January 1, 2004, of the SEER 11 population diagnosed in the previous 10 years
 By Age at Prevalence, Race/Ethnicity and Sex

Age at Prevalence	Age Specific (Crude)										Age-Adjusted ^f
	All Ages	0-9	10-19	20-29	30-39	40-49	50-59	60-69	70-79	80+	All Ages
Race/Sex											
All Races ^c	0.0428%	0.0003%	0.0017%	0.0047%	0.0115%	0.0366%	0.0924%	0.1449%	0.1754%	0.1474%	0.0443%
Males	0.0573%	0.0002%	0.0017%	0.0044%	0.0117%	0.0499%	0.1379%	0.2164%	0.2605%	0.2236%	0.0641%
Females	0.0286%	0.0003%	0.0018%	0.0051%	0.0113%	0.0234%	0.0493%	0.0810%	0.1111%	0.1056%	0.0277%
White ^c	0.0453%	0.0003%	0.0017%	0.0045%	0.0104%	0.0348%	0.0927%	0.1522%	0.1847%	0.1551%	0.0452%
Males	0.0610%	0.0002%	0.0015%	0.0038%	0.0112%	0.0481%	0.1395%	0.2264%	0.2728%	0.2391%	0.0658%
Females	0.0296%	0.0003%	0.0020%	0.0053%	0.0097%	0.0212%	0.0471%	0.0839%	0.1168%	0.1097%	0.0276%
Black ^c	0.0293%	-	0.0019%	0.0044%	0.0094%	0.0338%	0.0901%	0.1240%	0.1236%	0.0810%	0.0366%
Males	0.0391%	-	0.0027%	0.0050%	0.0079%	0.0420%	0.1409%	0.1976%	0.1841%	0.1164%	0.0534%
Females	0.0204%	-	-	0.0038%	0.0106%	0.0266%	0.0481%	0.0663%	0.0840%	0.0640%	0.0238%
Asian/Pacific Islander ^c	0.0388%	-	0.0016%	0.0063%	0.0176%	0.0473%	0.0860%	0.1067%	0.1394%	0.1127%	0.0403%
Males	0.0498%	-	-	0.0075%	0.0166%	0.0655%	0.1170%	0.1547%	0.2084%	0.1551%	0.0554%
Females	0.0285%	-	0.0020%	0.0051%	0.0185%	0.0308%	0.0588%	0.0665%	0.0900%	0.0846%	0.0281%
Hispanic ^d	0.0138%	-	0.0009%	0.0024%	0.0061%	0.0184%	0.0451%	0.0746%	0.1097%	0.1038%	0.0247%
Males	0.0168%	-	0.0008%	0.0020%	0.0067%	0.0236%	0.0635%	0.1116%	0.1566%	0.1477%	0.0345%
Females	0.0105%	-	0.0011%	0.0028%	0.0055%	0.0129%	0.0280%	0.0439%	0.0761%	0.0786%	0.0169%

^a US 2004 cancer prevalence counts are based on 2004 cancer prevalence proportions from the SEER registries and 1/1/2004 US population estimates based on the average of 2003 and 2004 population estimates from the US Bureau of the Census. Prevalence was calculated using the First Malignant Primary Only for a person.

^{b c d} Statistics based on (b) SEER 9 Areas (c) SEER 11 Areas and Rural Georgia (d) NHIA for Hispanic for SEER 11 Areas and Rural Georgia.

^e Maximum limited-duration prevalence: 29 years for 1975-2004 SEER 9 data; 14 years for 1990-2004 SEER 11 data (used to calculate prevalence for Hispanics and Asian Pacific Islanders).

^f Percentages are age-adjusted to the 2000 US Standard Population (19 age groups - Census P25-1130) by 5-year age groups.

^{g h} (g) Cases diagnosed more than 29 years ago were estimated using the completeness index method (Capocaccia et. al. 1997, Merrill et. al. 2000). (h) Complete prevalence is obtained by summing 0 to <29 and >=29.

- Statistic not shown. Statistic based on fewer than 5 cases estimated alive in SEER for the time interval.

+ Not available.

SEER Incidence, Delay Adjusted Incidence and US Death Rates^a Cancer of the Oral Cavity and Pharynx, by Race and Sex

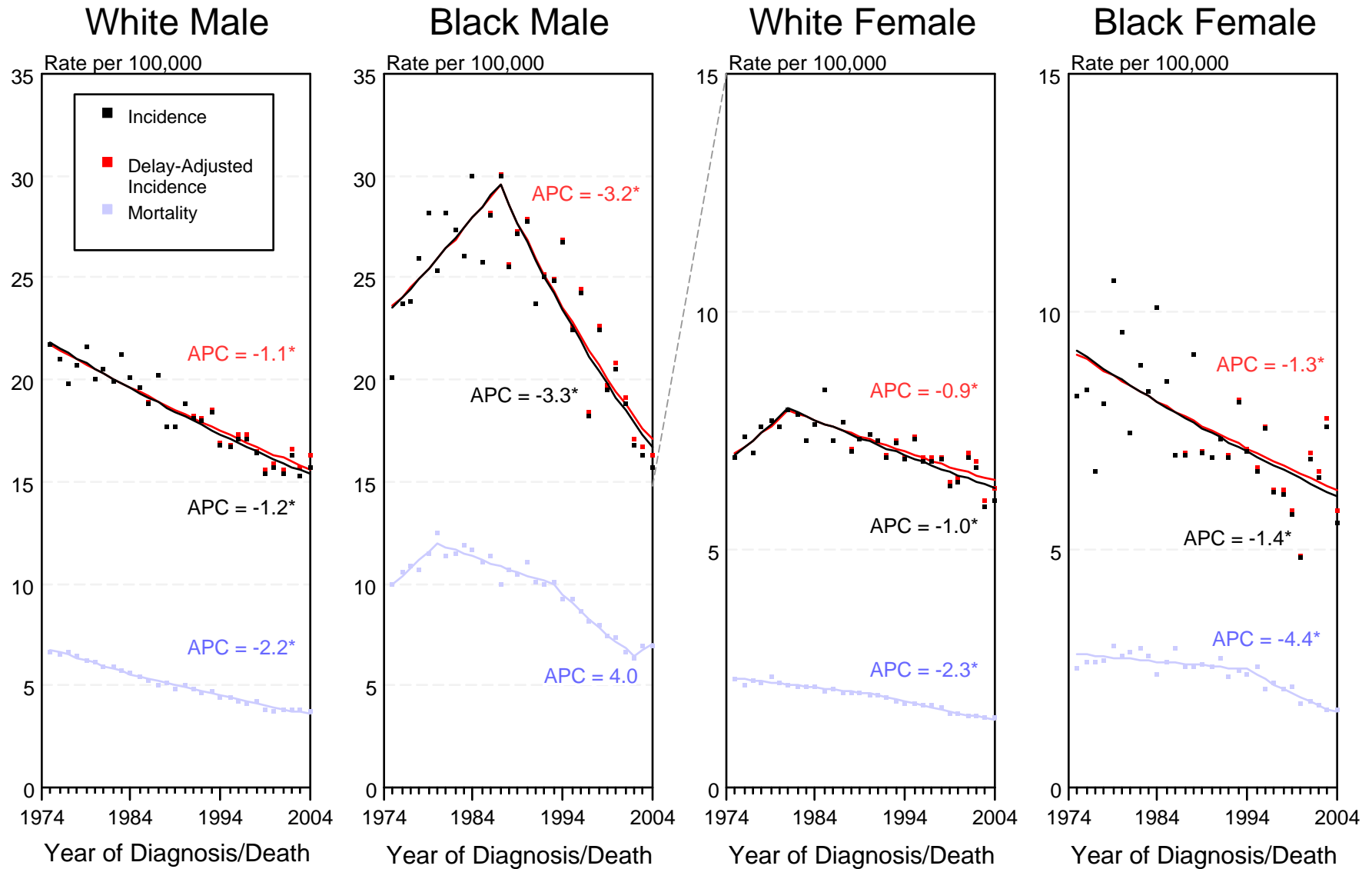


Figure XX-1

^a Source: SEER 9 areas and NCHS public use data file for the total US. Rates are age-adjusted to the 2000 US Std Population (19 age groups - Census P25-1103). Regression lines and APCs are calculated using the Joinpoint Regression Program Version 3.0, April 2005, National Cancer Institute.

The APC is the Annual Percent Change for the regression line segments. The APC shown on the graph is for the most recent trend.

* The APC is significantly different from zero ($p < 0.05$).

SEER Incidence and US Death Rates^a Cancer of the Oral Cavity and Pharynx, Both Sexes

Joinpoint Analyses for Whites and Blacks from 1975-2004

and for Asian/Pacific Islanders, American Indians/Alaska Natives and Hispanics from 1992-2004

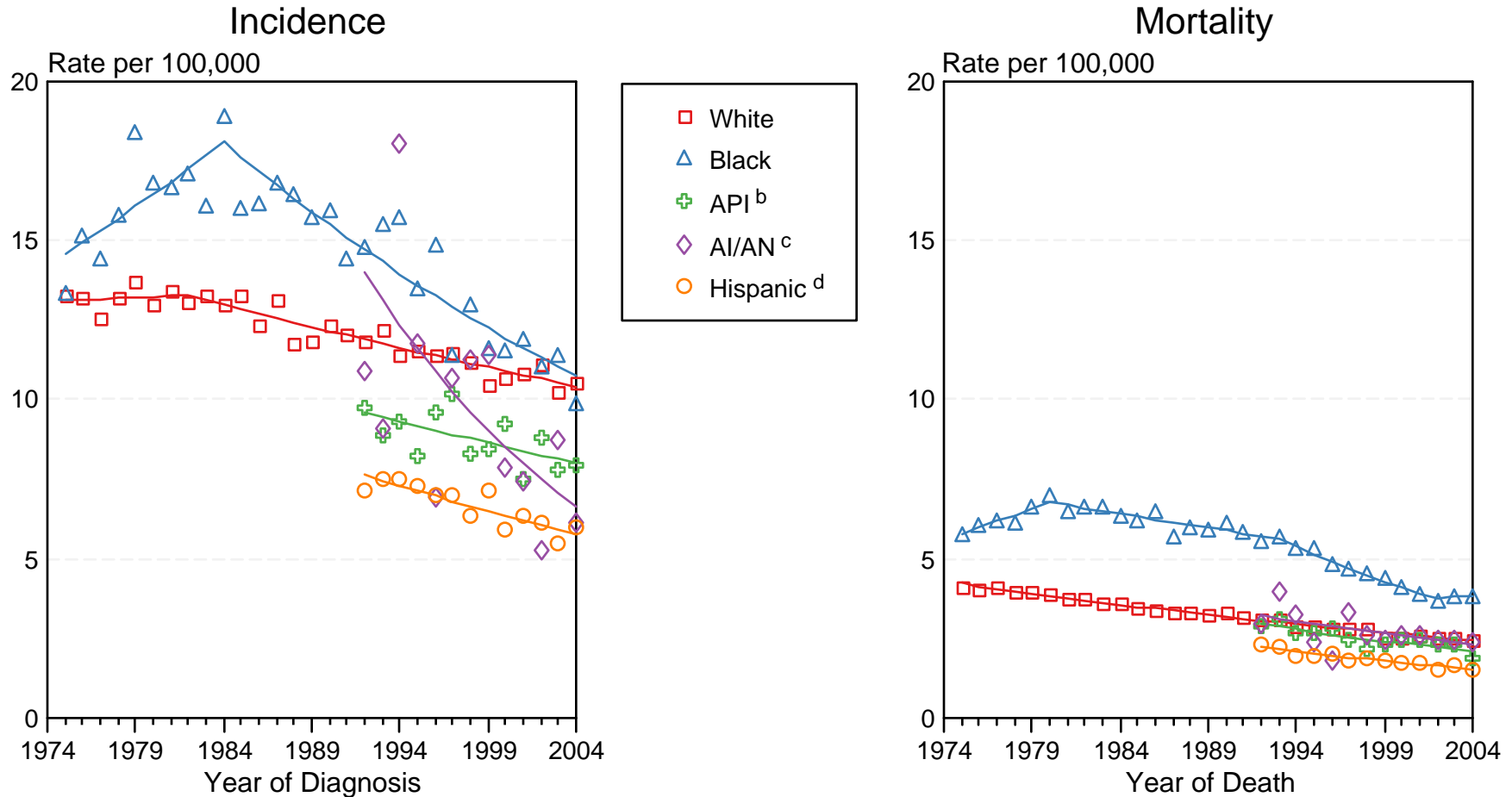


Figure XX-2

Source: Incidence data for whites and blacks are from the SEER 9 areas (San Francisco, Connecticut, Detroit, Hawaii, Iowa, New Mexico, Seattle, Utah, Atlanta). Incidence data for Asian/Pacific Islanders, American Indians/Alaska Natives and Hispanics are from the SEER 13 Areas (SEER 9 Areas, San Jose-Monterey, Los Angeles, Alaska Native Registry and Rural Georgia). Mortality data are from NCHS public use data file for the total US.

^a Rates are age-adjusted to the 2000 US Std Population (19 age groups - Census P25-1103).
Regression lines are calculated using the Joinpoint Regression Program Version 3.0, April 2005, National Cancer Institute.

^b API = Asian/Pacific Islander.

^c AI/AN = American Indian/Alaska Native. Rates for American Indian/Alaska Native are based on the CHSDA(Contract Health Service Delivery Area) counties.

^d Hispanic is not mutually exclusive from whites, blacks, Asian/Pacific Islanders, and American Indians/Alaska Natives. Incidence data for Hispanics are based on NHIA and exclude cases from the Alaska Native Registry. Mortality data for Hispanics exclude cases from Connecticut, Maine, Maryland, Minnesota, New Hampshire, New York, North Dakota, Oklahoma, and Vermont.

SEER Incidence Rates^a

Cancer of the Oral Cavity and Pharyngeal for Selected Subsites, Both Sexes

Joinpoint Analyses for Whites and Blacks from 1975-2004

and for Asian/Pacific Islanders, American Indians/Alaska Natives and Hispanics from 1992-2004

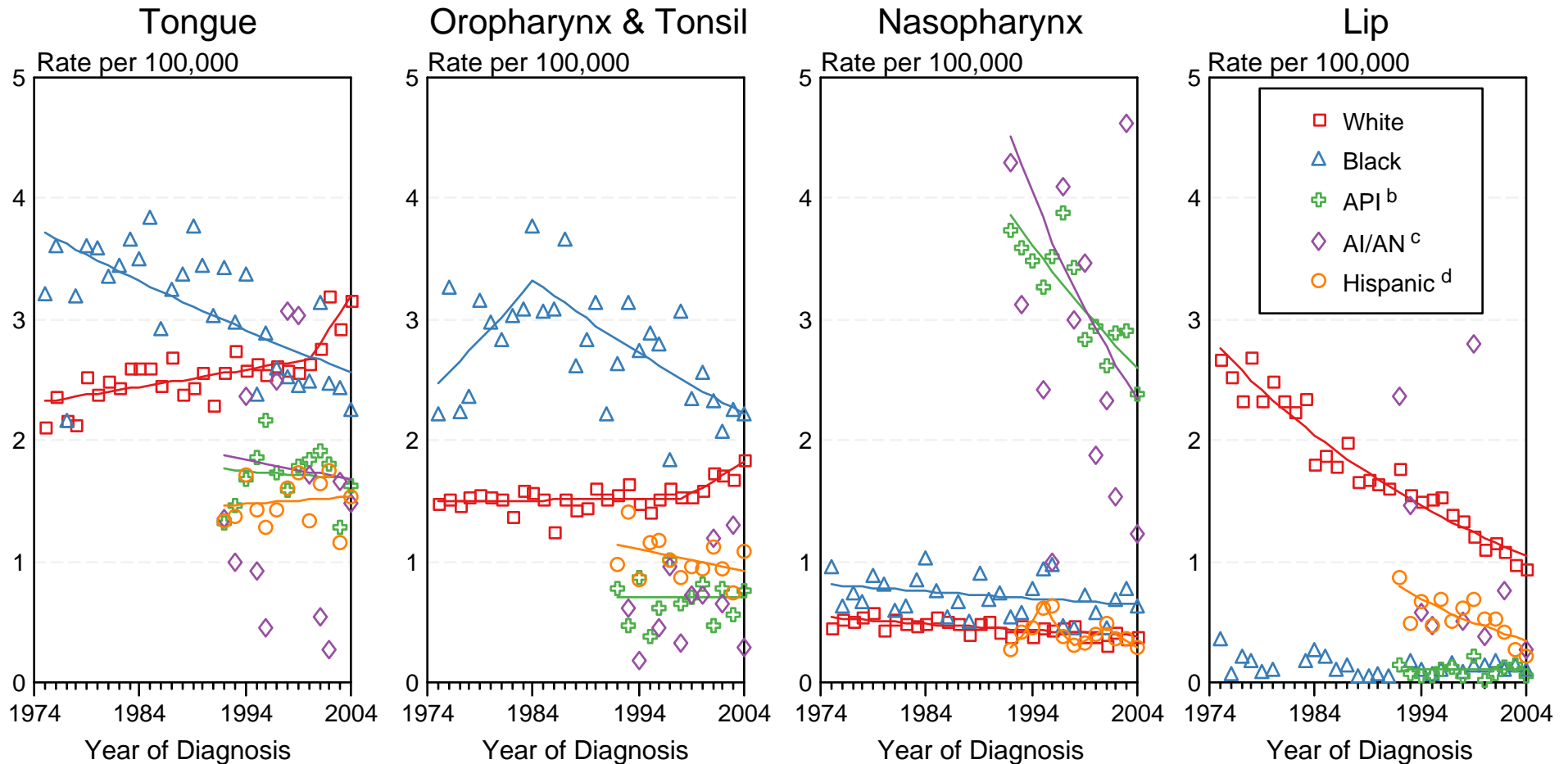


Figure XX-3

Source: Incidence data for whites and blacks are from the SEER 9 areas (San Francisco, Connecticut, Detroit, Hawaii, Iowa, New Mexico, Seattle, Utah, Atlanta). Incidence data for Asian/Pacific Islanders, American Indians/Alaska Natives and Hispanics are from the SEER 13 Areas (SEER 9 Areas, San Jose-Monterey, Los Angeles, Alaska Native Registry and Rural Georgia).

^a Rates are age-adjusted to the 2000 US Std Population (19 age groups - Census P25-1103).

Regression lines are calculated using the Joinpoint Regression Program Version 3.0, April 2005, National Cancer Institute. Regression lines could not be calculated for data series that had at least one diagnosis year with a 0 case count.

^b API = Asian/Pacific Islander.

^c AI/AN = American Indian/Alaska Native. Rates for American Indian/Alaska Native are based on the CHSDA (Contract Health Service Delivery Area) counties.

^d Hispanic is not mutually exclusive from whites, blacks, Asian/Pacific Islanders, and American Indians/Alaska Natives. Incidence data for Hispanics are based on NHIA and exclude cases from the Alaska Native Registry.