



Harper County FSA Newsletter

Harper County Farm Service Agency

803 Fanning Drive, Anthony KS 67003-2866

Phone: 620-842-3751 - FAX: 620-842-3173

May 2007

=====
Staff: Marsha Carothers, Acting CED; Program Assistants: TaLana Burkholder, Nanci Marshall and Teryl Reed;
Fieldmen: Donald Reber and Terry Miller
=====

FSA REMINDS PRODUCERS OF IMPORTANT DEADLINES

The Farm Service Agency (FSA) has many programs that provide Kansas farmers and ranchers supplemental income to help with the many expenses of a farming or ranching operation. Reminders of some the program deadlines are:

April 14 - Final date to burn Conservation Reserve Program acreage with an approved maintenance plan. **(This has been extended to May 1, 2007 for the 2007 year-see article explaining this change on page 2.)**

April 15 through July 15 - Kansas primary nesting season.

May 1 - Final date to complete the "Zero Tolerance" requirement on CRP grass acres. Additional information on this requirement can be found on the next page of this newsletter.

May 31 - Final date to request a 2006-crop commodity loan or loan deficiency payment for feed grains, minor oilseeds, soybeans, and cotton.

May 31 - Final date to certify small grains. Certify small grains for grazing or haying no later than 15 days prior to haying or grazing. Farm operators will need to call for an appointment if they haven't reported 2007 small grain acres.

June 15 - Nominations for FSA County Committee election begins.

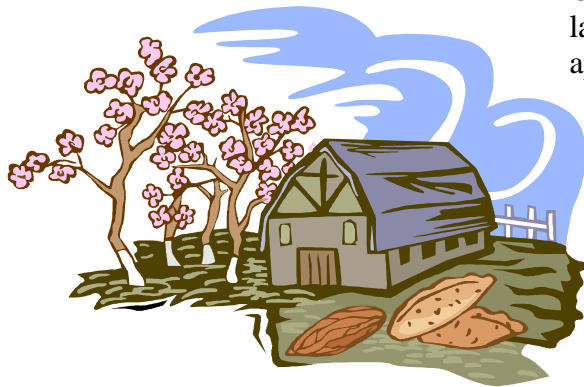
August 1 - Final date to submit nominations for the FSA County Committee election.

August 1 - Final date to certify spring seeded acres and CRP. Noninsured Crop Disaster Assistance Program (NAP) acreages must be certified by August 1 or 15 days prior to the onset of harvest or grazing. NAP production reports on crops covered in the previous year are also required by this date.

IMPORTANT: Producers must report acreages to maintain eligibility for Price Support Programs, Noninsured Crop Assistance Program (NAP), Conservation Reserve Program (CRP), and Direct and Counter-Cyclical Program. All cropland on all farms must be certified to remain eligible.

August 1 - Final date to request a farm reconstitution.

August 3 - Final date to signup for Direct and Counter-Cyclical Program (DCP), without paying a late fee. Farm operators will need to call for an appointment if they haven't enrolled.



FSA accepts applications anytime for Farm Storage Facility Loans, Continuous CRP, Rural Youth Loans, and Direct or Guaranteed Operating or Farm Ownership Loans, including loans for Beginning Farmers and Socially Disadvantaged Applicants. Participants in the Milk Income Loss Contract Extension program are reminded to bring in monthly milk production.

Farmers and ranchers in disaster counties are reminded that they have eight months from the date of a disaster declaration to apply for emergency loans through the Farm Loan Program (FLP) to help cover production and physical losses.

Producers can obtain an e-Authentication Level 2 account to conduct some of their USDA business online. Once the account is setup, access is available to eLDP, eDCP, Financial Inquiry, eRepresentative, and Customer Statement. Find out more information at www.fsa.usda.gov, and click on "OnLine Services" at the top of the page.

To apply for FSA benefits, contact the Farm Service Agency at your local USDA Service Center. Information on FSA programs and services can be obtained at www.fsa.usda.gov.

KANSAS EXTENDS THE CRP BURNING DATE TO MAY 1, 2007

The burning period for acres enrolled in the Conservation Reserve Program (CRP) has been extended to May 1, 2007. Normally the Kansas burn period begins February 1 and ends April 15, except for soils with an "I" value of 86 or greater must be burned during the period of April 1 through April 30.

When it became apparent that CRP participants with a scheduled maintenance or required management burn may not be able to timely perform this measure within the prescribed dates due to unseasonable wet and cold weather, Kansas Department of Wildlife and Parks, Natural Resources Conservation Service, and FSA, at the State levels, agreed that due to the current field

and weather conditions, a statewide burning extension would be granted to May 1, 2007. These agencies felt it is important that a CRP burn be completed even though this extension occurs during the nesting season. Wildlife interests and effects have been considered in reaching this determination.

It will not be necessary to modify the Conservation Plan of Operations (CPO) to account for this extension if a prescribed burn was previously scheduled. The CPO shall be revised if a participant requests an initial burn during the extension. For more information, contact your local USDA Service Center.

CONSERVATION RESERVE PROGRAM (CRP) MAINTENANCE REQUIRED BY MAY 1, 2007

Most of Harper County's CRP contracts are stands of native grass. Trees are prohibited from these grass stands, and unless they are part of an approved practice listed on your Conservation Plan of Operation (CPO), must be destroyed. As of **May 1, 2007**, there is zero tolerance on trees, noxious weeds, or any other prohibited use of CRP acreage. Failure to maintain the established CRP grass stand from noxious weeds (Sericea Lespedeza, Johnson grass, bind weed, etc), control tree invasion, or any other prohibited use as required on the CRP CPO, is a violation. Non-compliance could result in a payment reduction penalty, or if severe enough, would require a refund of ALL annual CRP payments on the affected acres, plus interest and liquidated damages. Other examples of prohibited use of CRP include, but are not limited to the following:

1. Haying and Grazing
2. Mowing CRP for any reason than spot maintenance (this includes hunting lanes, cosmetic mowing, generic weed control, etc.)
3. Parking and/or storage of machinery, junk vehicles, buildings, etc.
4. Livestock feed storage, including hay bales.
5. Permanent roads, lanes or trails
6. Oil/gas wells, associated with tanks and access roads.



Our office will be conducting annual spot checks of CRP acreages soon. If you have tree problems, noxious weeds, or any of the items listed above on your CRP acres, IMMEDIATE ACTION IS NECESSARY TO INSURE YOU MEET THE ZERO TOLERANCE REQUIREMENT.

HARPER COUNTY 2007 CROP PRICE SUPPORT LOAN RATES

The 2007 Price Support Loan Rates for Harper County are as follows:

WHEAT -	\$2.92 per Bushel	GR. SORGHUM -	\$3.42 per CWT
OATS -	\$1.37 per Bushel	SOYBEANS -	\$4.94 per Bushel
BARLEY-	\$1.85 per Bushel	CANOLA -	\$7.75 per CWT
CORN -	\$2.14 per Bushel		