

# DECATUR COUNTY FSA NEWSLETTER

May 2007



## COUNTY COMMITTEE

David Meitl, Chairperson  
Mike Coleman, Vice Chairperson  
Robert Henningson, Member

## OFFICE STAFF

Diane Barrett, CED  
Sue Hillebrand, PT  
Candi Ketterl, PT  
Vivian Russ, PT

## OFFICE HOURS

Monday-Friday  
8:00 AM-4:30 PM  
Phone: (785) 475-3131

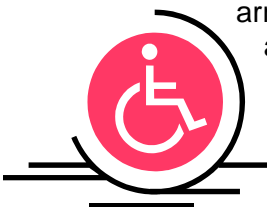


## County Committee Meeting Times

The Decatur County Committee meetings are held on the second Thursday of each month at 9:00 AM, in the Decatur County USDA Service Center Conference Room.

## Special Accommodations

For individuals with disabilities, vision impairment, or hearing impairment, we will make special accommodations upon request. If special accommodations are required, please contact the FSA office and we will make any arrangements that are needed.



## DCP ENROLLMENT DEADLINE EXTENDED TO AUGUST 3

The deadline to sign-up for the 2007 Direct and Counter-cyclical Program (DCP) has been extended to August 3, 2007.

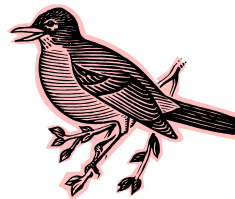
Problems with the FSA's web-based computer system caused agency officials to extend the deadline in order to ensure adequate opportunity for all producers to participate in the sign-up. While the sign-up deadline is extended, the cut-off for participation remains September 30, 2007. Those producers failing to sign up by August 3, 2007, but before September 30, will pay a late-file fee of \$100.

Enrollment in DCP for the 2007 contract period began October 1, 2006, and was scheduled to end on June 1, 2007. The extension applies only to the enrollment period, and does not extend the DCP contract period. Contact the local office to schedule an appointment.

## Acreage Reporting Deadline Nears

The deadline to report small grain and alfalfa acreage is MAY 31, 2007. If you haven't reported these crops please contact our office for an appointment.

The final date to report the balance of your acreage including corn, grain sorghum, feed, sunflowers, fallow and CRP is August 1, 2007. Producers participating in NAP must report NAP acreages 15 days prior to the onset of harvest or grazing.



## Noninsured Crop Disaster Assistance Program

The deadline to purchase NAP coverage on eligible 2007 crops in Kansas has past. NAP entitles eligible producers to a payment of 55 percent of an average market price for the commodity if a natural disaster caused a 50 percent production loss or greater of an eligible crop.

In the unfortunate event that a producer does suffer a loss on their particular crop, a form CCC-576, Notice of Loss, must be filed with FSA within 15 calendar days after the disaster occurrence, or the date the loss becomes apparent to the producer.

Producers are limited to \$100,000 in benefits per person per crop year, they must certify crop acres by applicable deadlines, maintain production evidence for 3 years, not exceed the \$2 million gross revenue provisions, and must comply with conservation compliance provisions in order to be eligible.

The U.S. Department of Agriculture (USDA) prohibits discrimination in all programs and activities on the basis of race color, national origin, gender, religion, age, disability, political beliefs, sexual orientation, and marital or family status (Not all bases apply to all programs). Persons with disabilities who require alternative means for communication of program information (braille, large print, audiotapes, etc.) should contact the USDA TARGET Center at (202) 720-2600 (voice or TDD). To file a complaint of discrimination, write USDA, Director, Office of Civil Rights, Room 326W, Whitten Building, 14<sup>th</sup> and Independence Avenue SW, Washington, D.C. 20250-9410 or call (202) 720-5964 (voice or TDD). USDA is an equal opportunity provider and employer.

## IMPORTANT DATES TO REMEMBER

- May 28** Closed for Memorial Day
- May 31** Final date to request 2006 crop loans/or LDP's for corn, sorghum, soybean, and sunflower
- May 31** Final date to report wheat, barley, oats and alfalfa acreages
- July 4** Closed for Independence Day
- August 1** Final date to submit nominations for COC election.
- August 1** Final date to certify spring seed crops and CRP. NAP acres must be certified by August 1 or 15 days prior to the onset of harvest or grazing.
- August 1** Final date to request a farm reconstitution
- August 3** 2007 DCP signup deadline without filing fee

## 2007 Loan Rates for Grain

Commodity loan rates for the 2007 crop year have been announced and are as follows:

Wheat	\$ 2.80 /bu
Barley	\$ 1.90 /bu
Corn	\$ 1.94 /bu
Oats	\$ 1.34 /bu
Sorghum	\$ 3.05 /cwt
Soybeans	\$4.65 /bu
Sunflowers	\$8.75 /cwt

## FSA Signature Requirements

Proper signatures on Farm Service Agency contracts, applications and forms must be submitted before the document will be considered as filed. All entities, including revocable and irrevocable trusts, corporations, partnerships, estates, etc., must provide evidence of signature authority stipulating those individuals who are authorized to represent the entity.

FSA cannot accept signatures without such documentation on file. Examples of acceptable evidence include trust agreements, corporate charters or resolutions, partnership agreements and court orders of appointment. Spouses can sign for one another on most program documents unless written notification denying a spouse this authority has been provided to the county office staff. An FSA-211 may be filed to delegate signature authority for FSA program purposes to another individual.



## Internet Access To FSA Program Information

Information on FSA programs and services can be found at [www.fsa.usda.gov](http://www.fsa.usda.gov). In addition, LDP rates are posted daily and national news releases can be obtained. You can find Kansas FSA related information at [www.fsa.usda.gov/ks](http://www.fsa.usda.gov/ks), including county/district newsletters, state news releases, and upcoming State events.

## Conduct Your USDA Business On-Line

If you have access to the Internet and have an e-mail account you can obtain an e-Authentication Level 2 Account and conduct some of your USDA business on-line. Access [www.fsa.usda.gov](http://www.fsa.usda.gov), then click on "Online Services" at the top of the page. Instructions are provided on how to obtain a Level 2 eAuth account. Once the account is set up, you can access eLDP, eDCP, Customer Statement, Financial Inquiry, eForms, and eRepresentative. Obtain more information and a brochure at your local FSA office.

