

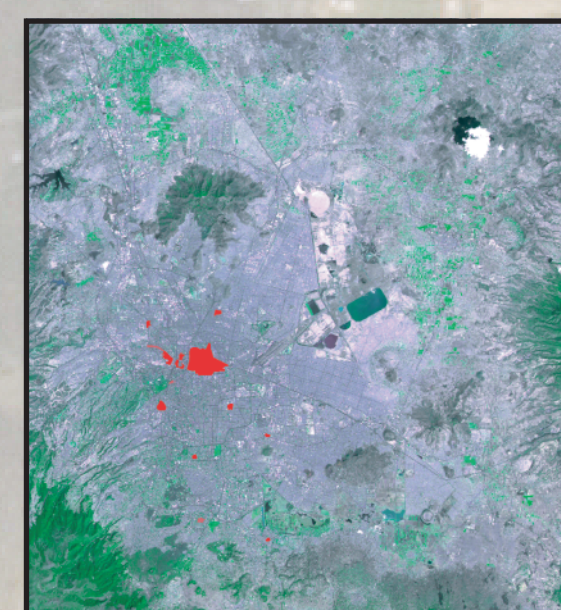
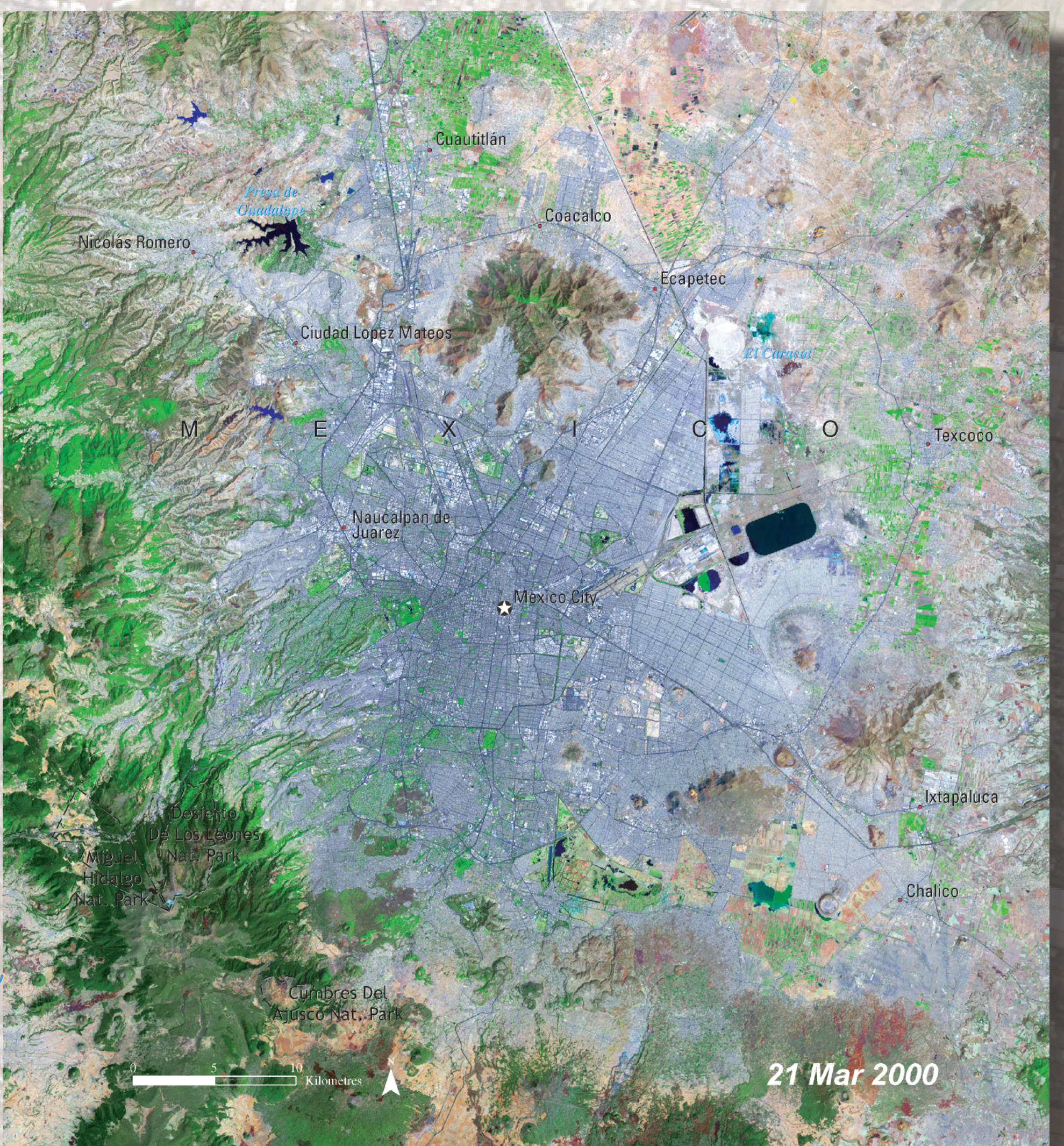
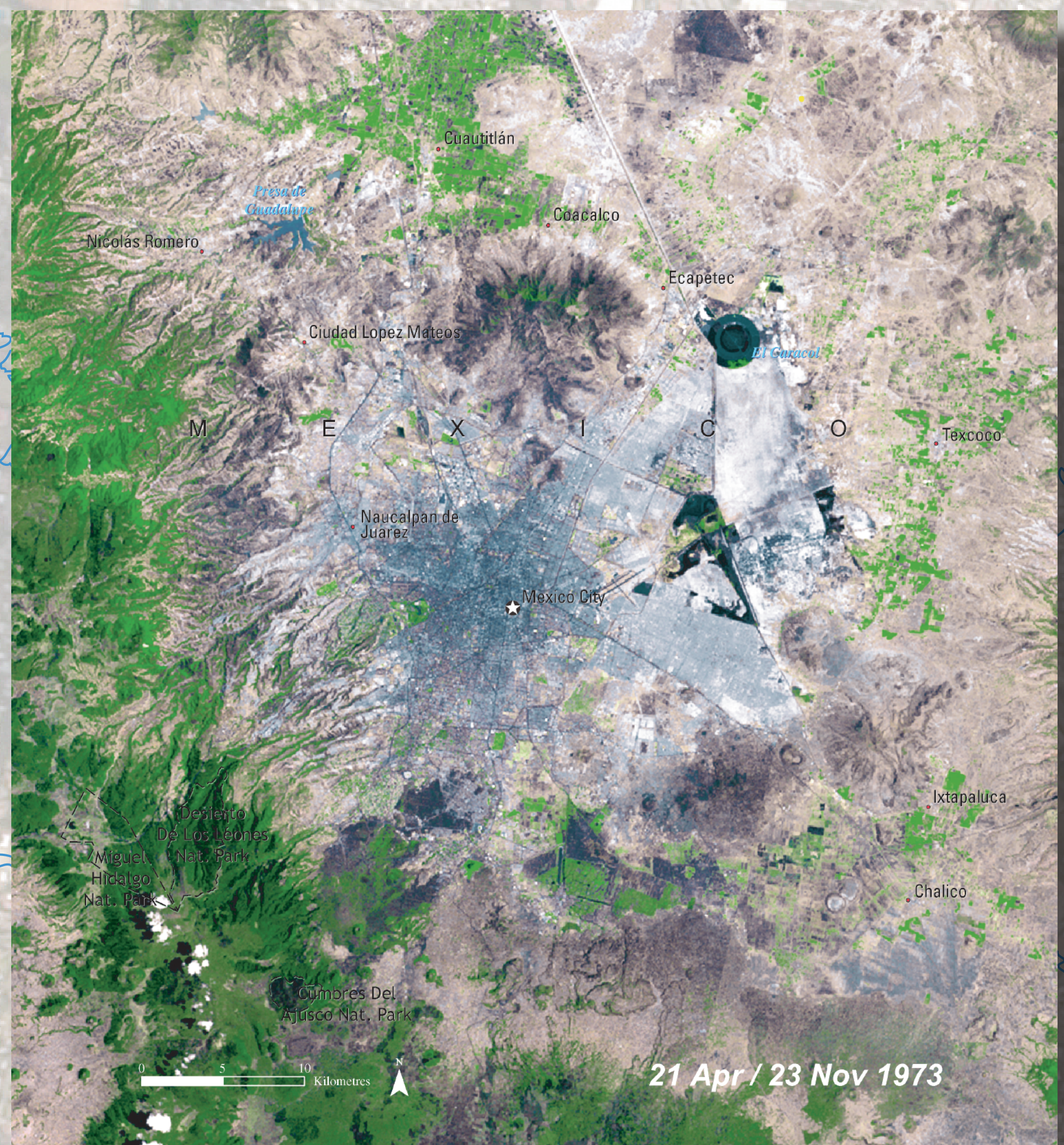


Urban Expansion in Mexico City



Growth of a Megacity

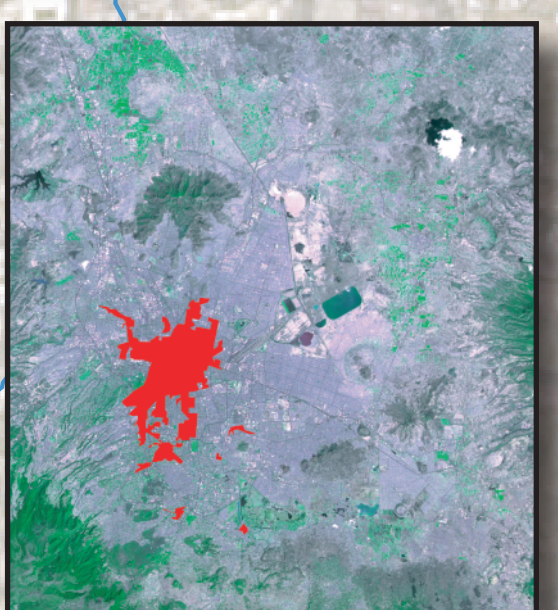
Mexico City is one of the fastest growing megalopolis cities in the world. These satellite images show the transformation Mexico City underwent between 1973 and 2000. Areas of urban infrastructure appear as shades of purple while natural vegetation is shown in green. In 1973 Mexico City had a population of about 9 million. In the ensuing years, the city expanded into surrounding areas. The forests in the mountains west and south of the city suffered significant deforestation as the urban sprawl progressed. By 1986, Mexico City's population had soared to 14 million. In 1999, Mexico City had a population of 17.9 million, making it the second largest metropolitan area in the world behind Tokyo, Japan. The Mexican megalopolis is expected to reach 20 million in the next few years.



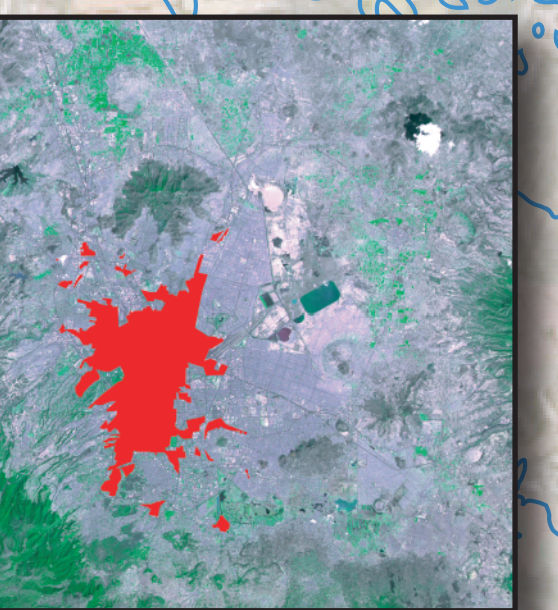
1910



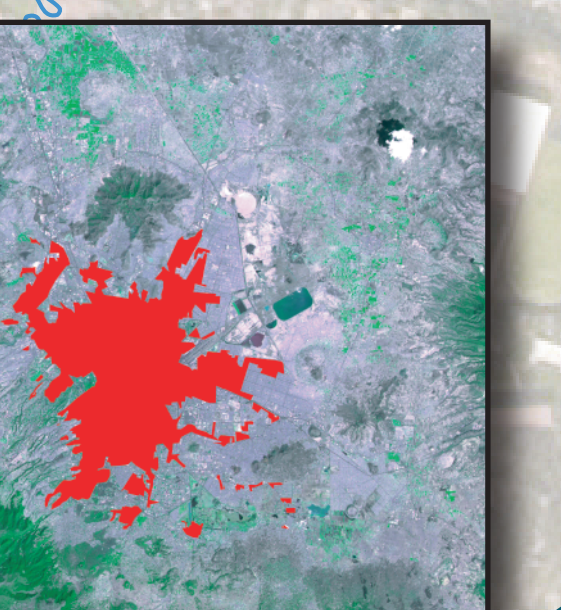
1929



1941



1959



1970

Historical urban boundaries of Mexico City. Courtesy Centroege