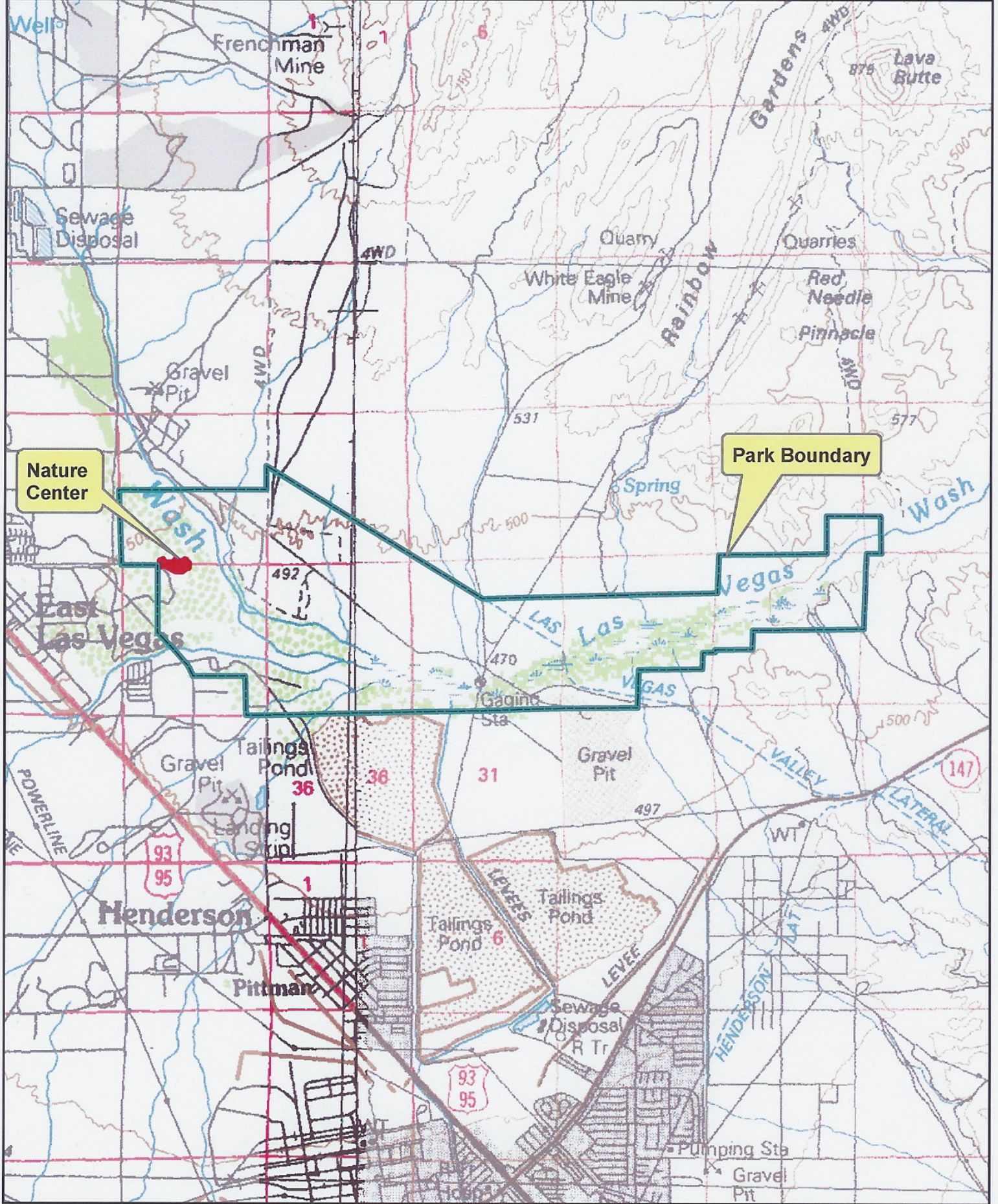

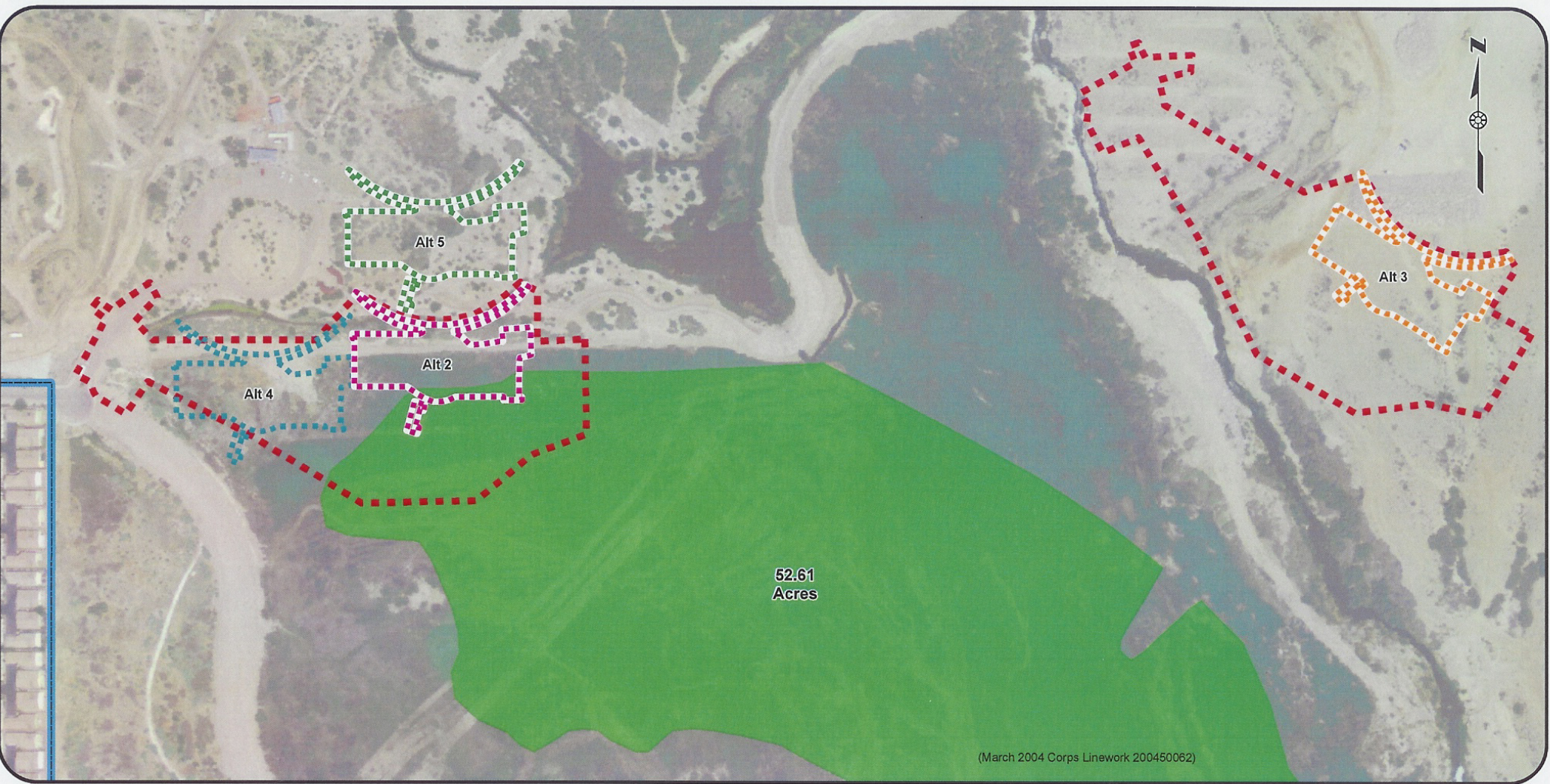
 Kimley-Horn and Associates, Inc.	Clark County Wetlands Park	Nature Center	
	Figure 1. Vicinity Map		










 <p>Kimley-Horn and Associates, Inc.</p>	<p>Clark County Wetlands Park</p>	<p>Nature Center</p>
<p>Figure 2. USGS Quadrangle Map</p>		



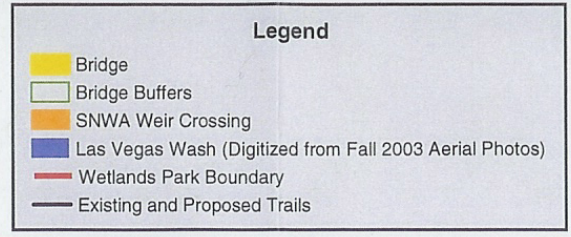
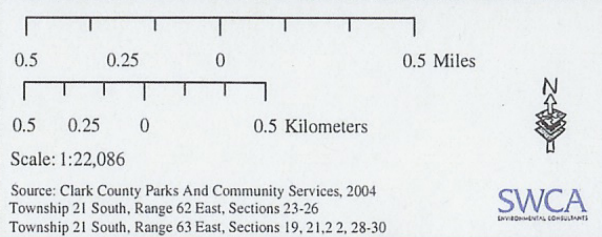
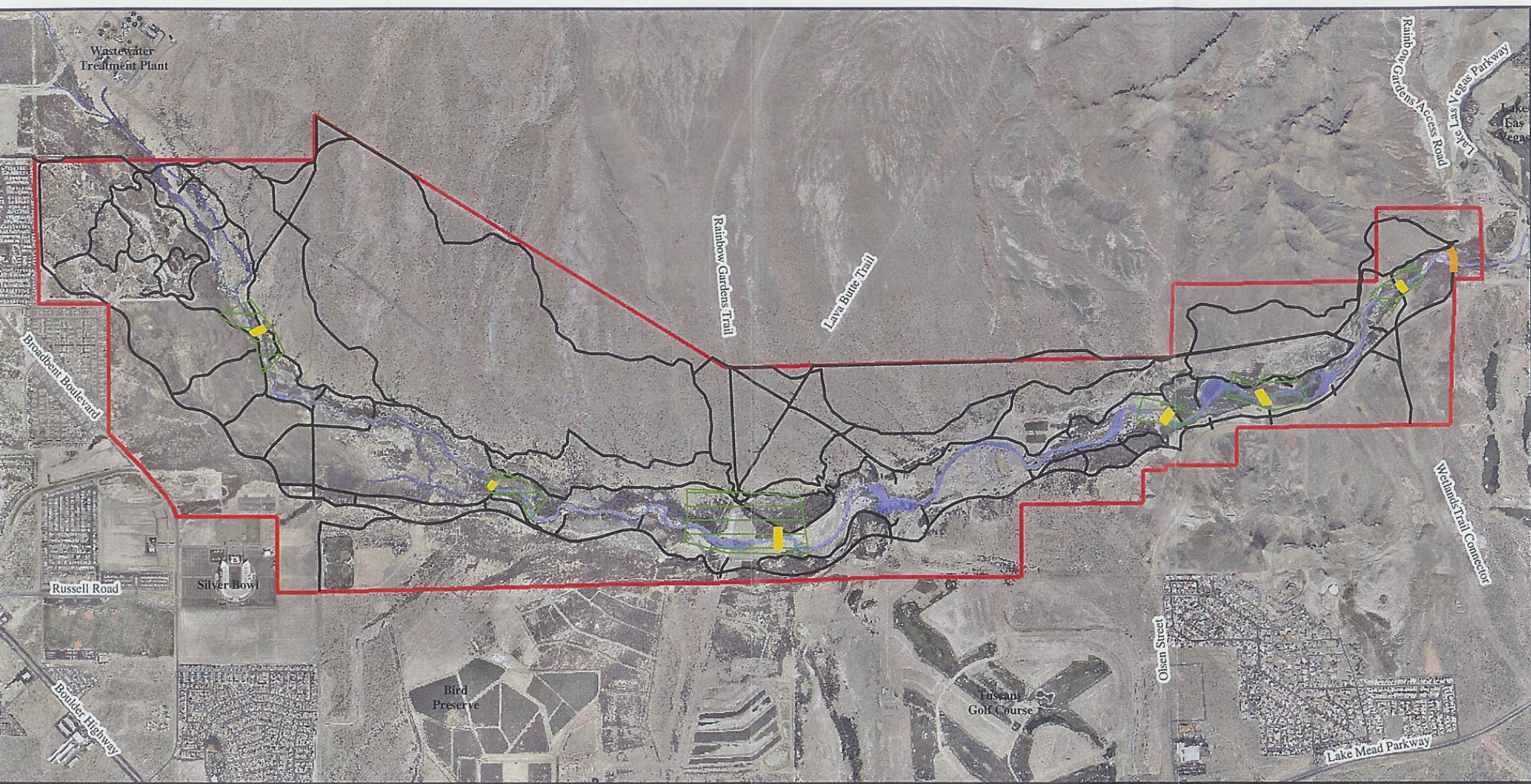
(March 2004 Corps Linework 200450062)

Figure 3.
Alternative Sites for Nature Center

Key

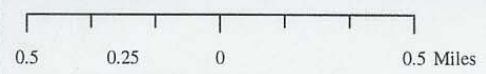
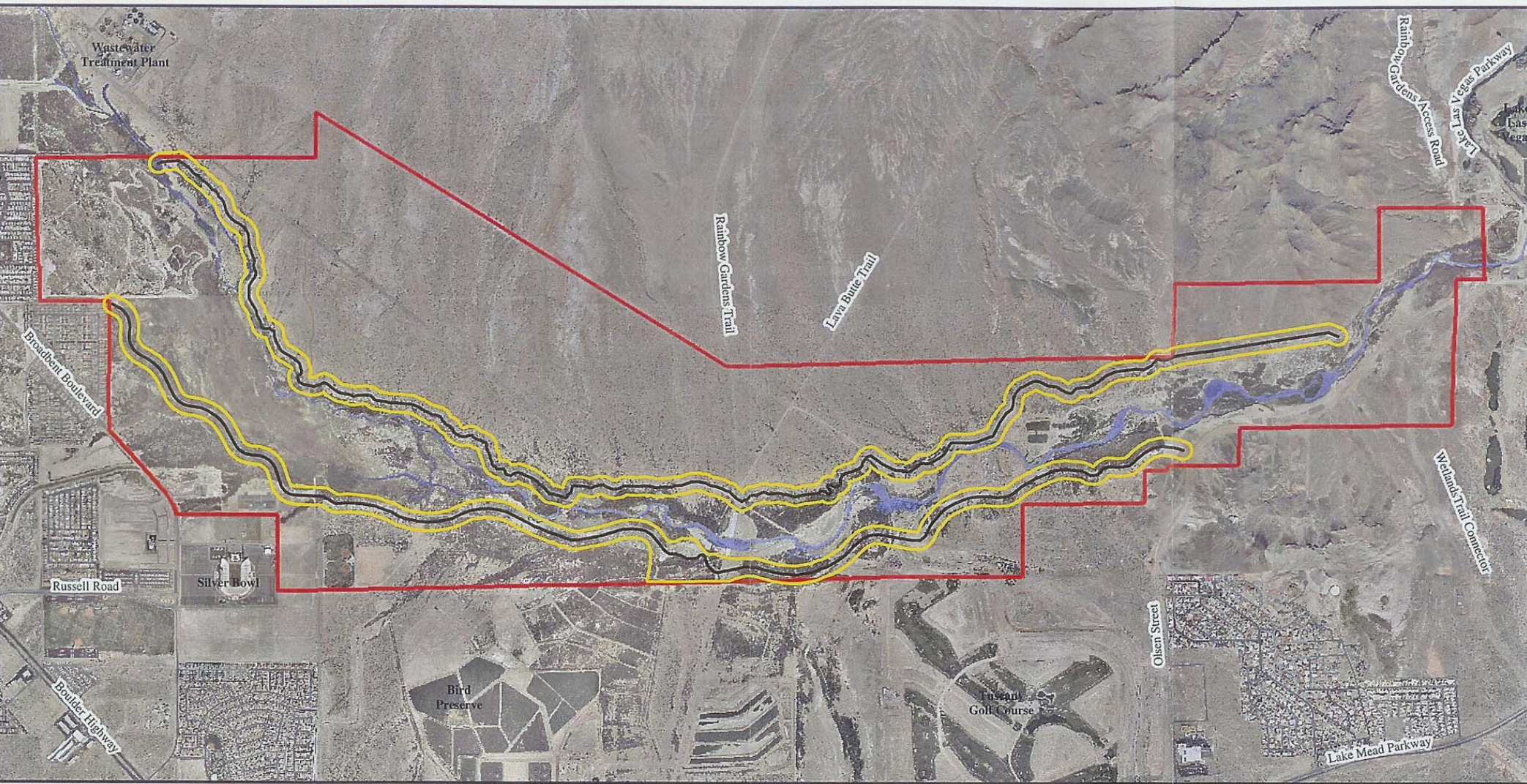
	Park Boundary		Alternative 4 - Tropicana Wash
	Nature Center Boundary (6.44 acres impact area)		Alternative 5 - Nature Preserve
	Alternative 2 - Proposed Action		Ducks Unlimited Wetland
	Alternative 3 - Las Vegas Wash		





Clark County Wetlands Park

Emergency Access and Pedestrian Bridges Project



Scale: 1:22,086

Source: Clark County Parks And Community Services, 2004
 Township 21 South, Range 62 East, Sections 23-26
 Township 21 South, Range 63 East, Sections 19, 21, 22, 28-30

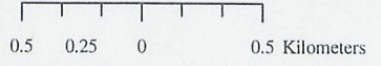
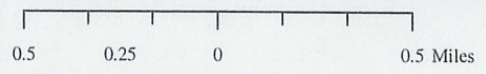
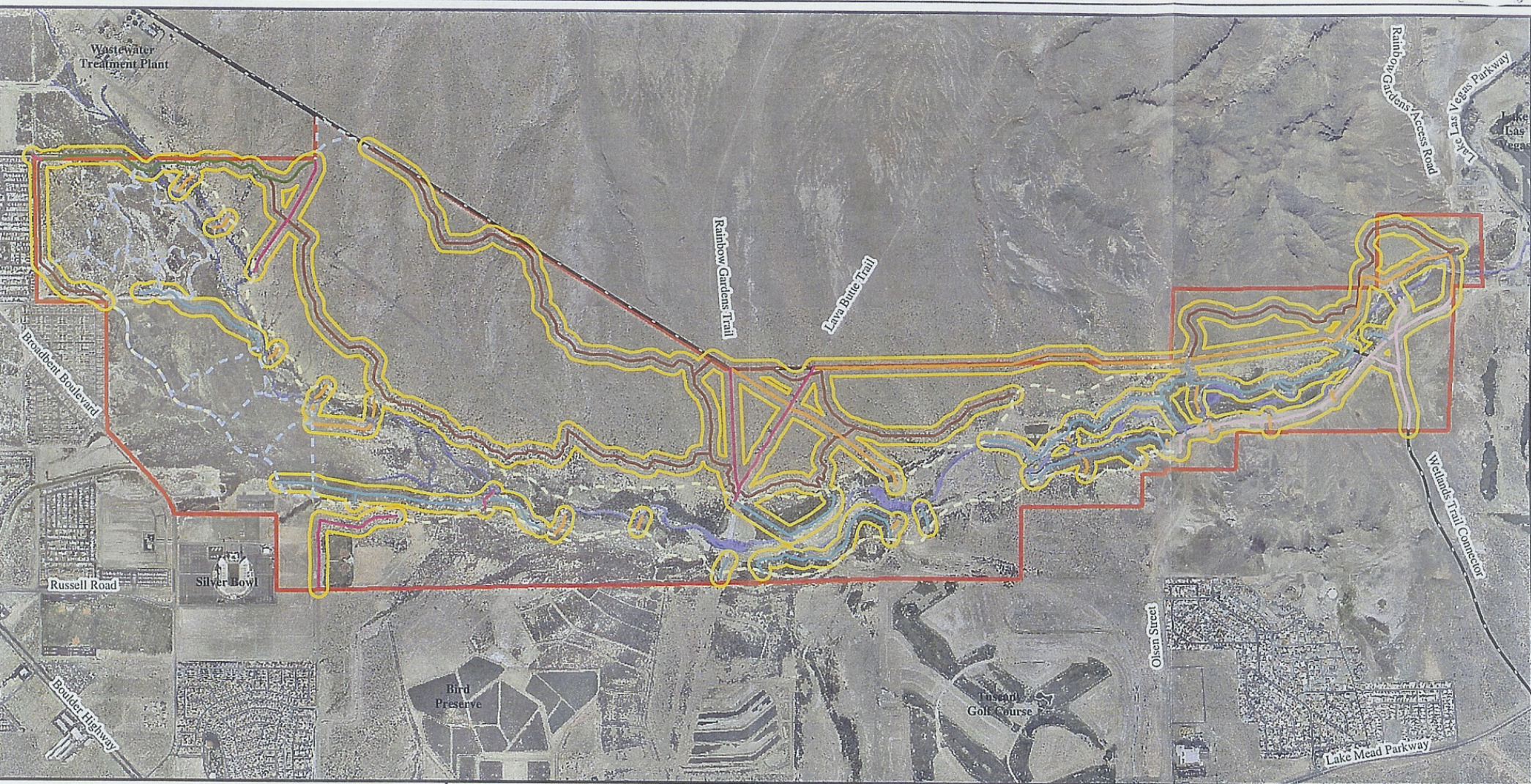


Legend

- Primary Trail
- 50-meter (164-ft.) Trail Buffer (each side)
- Las Vegas Wash (Digitized from Fall 2003 Aerial Photos)
- Wetlands Park Boundary

Clark County Wetlands Park

Primary Trails Project



Scale: 1:22,086

Source: Clark County Parks And Community Services, 2004
 Township 21 South, Range 62 East, Sections 23-26
 Township 21 South, Range 63 East, Sections 19, 21, 22, 28-30



Legend	
	Bike Trail
	Pedestrian/Bike Trail
	Bike/Equestrian Trail
	Existing Trail
	1701- Pipeline Alignment
	Wetlands Park Boundary
	Equestrian Trail
	Pedestrian/Bike/Equestrian Trail
	Maintenance/Emergency Trail
	Primary Trail Project (See Fig.X)
	50-meter (164- ft.) Trail Buffer (each side)
	Las Vegas Wash (Digitized from Fall 2003 Aerial Photos)

Clark County Wetlands Park

Perimeter Trails Project

